

DISTRICT I
1625 N. French Dr., Hobbs, NM 88240
Phone: (575) 393-6161 Fax: (575) 393-0720

DISTRICT II
811 S. First St., Artesia, NM 88210
Phone: (575) 748-1283 Fax: (575) 748-9720

DISTRICT III
1000 Rio Brazos Road, Aztec, NM 87410
Phone: (505) 334-6178 Fax: (505) 334-6170

DISTRICT IV
1220 S. St. Francis Dr., Santa Fe, NM 87505
Phone: (505) 476-3460 Fax: (505) 476-3462

State of New Mexico
Energy, Minerals & Natural Resources Department

HOBBS OGD

OIL CONSERVATION DIVISION APR 27 2015

1220 South St. Francis Dr.
Santa Fe, New Mexico 87505

RECEIVED

Form C-102
Revised August 1, 2011
Submit one copy to appropriate
District Office

☐ AMENDED REPORT

WELL LOCATION AND ACREAGE DEDICATION PLAT

| | | |
|-----------------------------------|--|--------------------------------------|
| API Number 30-025-42530 | Pool Code 3320330 | Pool Name House; Blinberry |
| Property Code 303227 | Property Name PLOW BOY FEDERAL | Well Number 2 |
| OGRID No. 873 | Operator Name APACHE CORPORATION | Elevation 3586' |

Surface Location

| UL or lot No. | Section | Township | Range | Lot Idn | Feet from the | North/South line | Feet from the | East/West line | County |
|---------------|---------|----------|-------|---------|---------------|------------------|---------------|----------------|--------|
| J | 35 | 19-S | 38-E | | 1650 | SOUTH | 1990 | EAST | LEA |

Bottom Hole Location If Different From Surface

| UL or lot No. | Section | Township | Range | Lot Idn | Feet from the | North/South line | Feet from the | East/West line | County |
|------------------------------|-----------------|--------------------|-----------|---------|---------------|------------------|---------------|----------------|--------|
| | | | | | | | | | |
| Dedicated Acres 40 | Joint or Infill | Consolidation Code | Order No. | | | | | | |

NO ALLOWABLE WILL BE ASSIGNED TO THIS COMPLETION UNTIL ALL INTERESTS HAVE BEEN CONSOLIDATED OR A NON-STANDARD UNIT HAS BEEN APPROVED BY THE DIVISION

| | |
|--|--|
| <p>GEODETIC COORDINATES NAD 27 NME</p> <p>SURFACE LOCATION Y=589182.3 N X=874640.6 E</p> <p>LAT.=32.613872° N LONG.=103.116657° W</p> <p>LAT.=32° 36' 50" N LONG.=103° 07' 00" W</p> <p>S.L. SEE DETAIL</p> <p>1990'</p> <p>DETAIL</p> <p>3588.4' 3584.8' 3585.1' 3584.2'</p> <p>600' 600'</p> | <p>OPERATOR CERTIFICATION</p> <p>I hereby certify that the information herein is true and complete to the best of my knowledge and belief, and that this organization either owns a working interest or unleased mineral interest in the land including the proposed bottom hole location or has a right to drill this well at this location pursuant to a contract with an owner of such mineral or working interest, or to a voluntary pooling agreement or a compulsory pooling order heretofore entered by the division.</p> <p><i>Sorina L. Flores</i> 3/5/14 Signature Date</p> <p>Sorina L. Flores Printed Name</p> <p>Sorina.Flores@apachecorp.com E-mail Address</p> |
| | <p>SURVEYOR CERTIFICATION</p> <p>I hereby certify that the well location shown on this plat was plotted from field notes of actual surveys made by me or under my supervision, and that the same is true and correct to the best of my belief.</p> <p>DECEMBER 31, 2013</p> <p>Date of Survey</p> <p>Signature & Seal of Professional Surveyor:</p> <p><i>Ronald J. Eidson</i> 12641 Certificate Number OFF Ronald J. Eidson 3239</p> <p>BKL JWSC W.O.: 13.11.1336</p> |
| | |
| | |

APR 28 2015

DISTRICT I
1625 N. French Dr., Hobbs, NM 88240
Phone: (575) 393-6161 Fax: (575) 393-0720

DISTRICT II
811 S. First St., Artesia, NM 88210
Phone: (575) 748-1283 Fax: (575) 748-9720

DISTRICT III
1000 Rio Brazos Road, Aztec, NM 87410
Phone: (505) 334-6178 Fax: (505) 334-6170

DISTRICT IV
1220 S. St. Francis Dr., Santa Fe, NM 87505
Phone: (505) 476-3460 Fax: (505) 476-3462

State of New Mexico
Energy, Minerals & Natural Resources Department
OIL CONSERVATION DIVISION
1220 South St. Francis Dr.
Santa Fe, New Mexico 87505

Form C-102
Revised August 1, 2011
Submit one copy to appropriate
District Office

AMENDED REPORT

WELL LOCATION AND ACREAGE DEDICATION PLAT

| | | |
|--------------------------------|--|-------------------------------------|
| API Number 30-025- | Pool Code 33250 | Pool Name House; Drinkard |
| Property Code 303227 | Property Name PLOW BOY FEDERAL | Well Number 2 |
| OGRID No. 873 | Operator Name APACHE CORPORATION | Elevation 3586' |

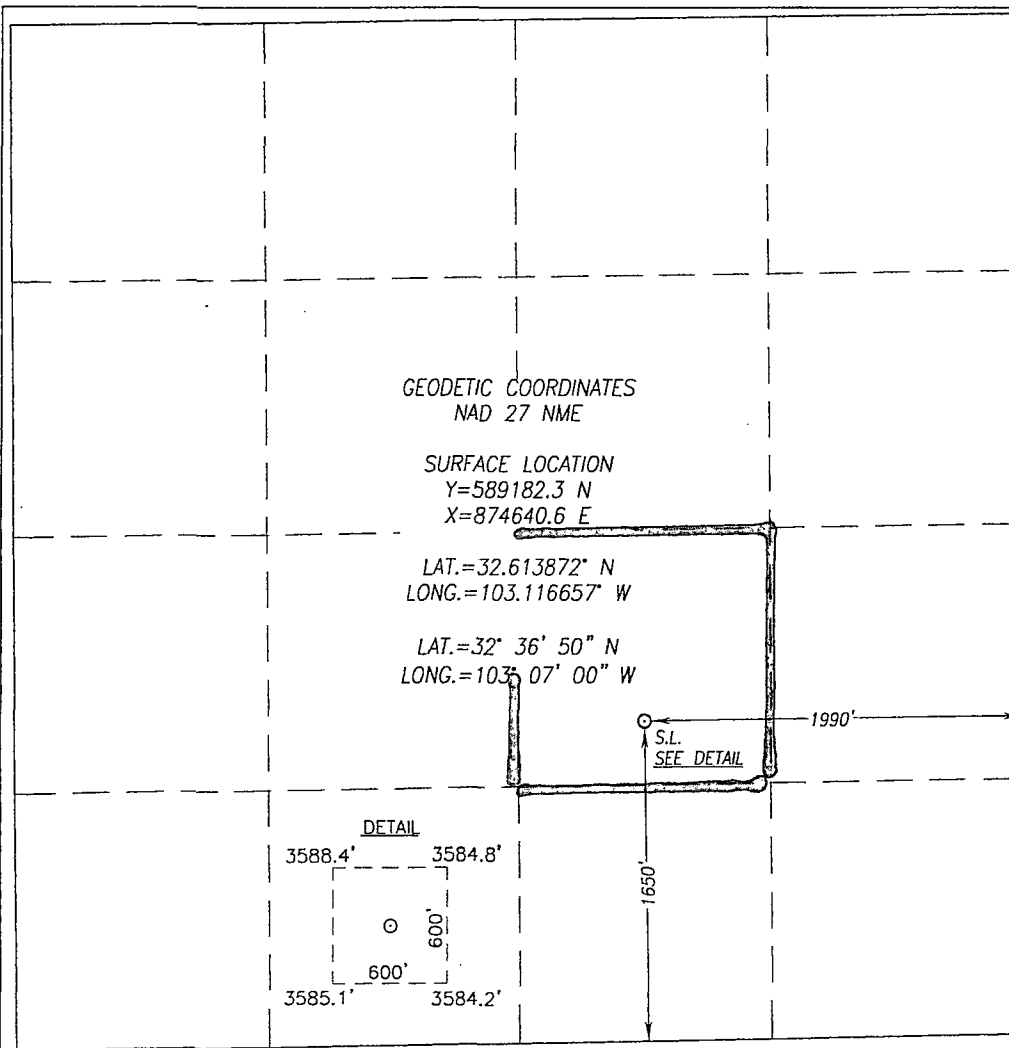
Surface Location

| UL or lot No. | Section | Township | Range | Lot Idn | Feet from the | North/South line | Feet from the | East/West line | County |
|---------------|-----------|-------------|-------------|---------|---------------|------------------|---------------|----------------|------------|
| J | 35 | 19-S | 38-E | | 1650 | SOUTH | 1990 | EAST | LEA |

Bottom Hole Location If Different From Surface

| UL or lot No. | Section | Township | Range | Lot Idn | Feet from the | North/South line | Feet from the | East/West line | County |
|------------------------------|-----------------|--------------------|-----------|---------|---------------|------------------|---------------|----------------|--------|
| | | | | | | | | | |
| Dedicated Acres 40 | Joint or Infill | Consolidation Code | Order No. | | | | | | |

NO ALLOWABLE WILL BE ASSIGNED TO THIS COMPLETION UNTIL ALL INTERESTS HAVE BEEN CONSOLIDATED OR A NON-STANDARD UNIT HAS BEEN APPROVED BY THE DIVISION



OPERATOR CERTIFICATION

I hereby certify that the information herein is true and complete to the best of my knowledge and belief, and that this organization either owns a working interest or unleased mineral interest in the land including the proposed bottom hole location or has a right to drill this well at this location pursuant to a contract with an owner of such mineral or working interest, or to a voluntary pooling agreement or a compulsory pooling order heretofore entered by the division.

Sorina L. Flores 3/5/14
Signature Date
Sorina L. Flores
Printed Name
Sorina.Flores@apachecorp.com
E-mail Address

SURVEYOR CERTIFICATION

I hereby certify that the well location shown on this plat was plotted from field notes of actual surveys made by me or under my supervision, and that the same is true and correct to the best of my belief.

DECEMBER 31, 2013
Date of Survey
Signature & Seal of Professional Surveyor:

Certificate Number **12641**
Name **GARY G. EIDSON**
BKL JWSC W.O.: 13.11.1336

DISTRICT I
1625 N. French Dr., Hobbs, NM 88240
Phone: (575) 393-6161 Fax: (575) 393-0720

DISTRICT II
811 S. First St., Artesia, NM 88210
Phone: (575) 748-1283 Fax: (575) 748-9720

DISTRICT III
1000 Rio Brazos Road, Aztec, NM 87410
Phone: (505) 334-6178 Fax: (505) 334-6170

DISTRICT IV
1220 S. St. Francis Dr., Santa Fe, NM 87505
Phone: (505) 476-3460 Fax: (505) 476-3462

State of New Mexico
Energy, Minerals & Natural Resources Department
OIL CONSERVATION DIVISION
1220 South St. Francis Dr.
Santa Fe, New Mexico 87505

Form C-102
Revised August 1, 2011
Submit one copy to appropriate
District Office

☐ AMENDED REPORT

WELL LOCATION AND ACREAGE DEDICATION PLAT

| | | |
|--------------------------------|--|-------------------------------------|
| API Number 30-025-2 | Pool Code 33470 | Pool Name House; Tubb, N. |
| Property Code 303227 | Property Name PLOW BOY FEDERAL | Well Number 2 |
| OGRID No. 873 | Operator Name APACHE CORPORATION | Elevation 3586' |

Surface Location

| UL or lot No. | Section | Township | Range | Lot Idn | Feet from the | North/South line | Feet from the | East/West line | County |
|---------------|---------|----------|-------|---------|---------------|------------------|---------------|----------------|--------|
| J | 35 | 19-S | 38-E | | 1650 | SOUTH | 1990 | EAST | LEA |

Bottom Hole Location If Different From Surface

| UL or lot No. | Section | Township | Range | Lot Idn | Feet from the | North/South line | Feet from the | East/West line | County |
|---------------|---------|----------|-------|---------|---------------|------------------|---------------|----------------|--------|
| | | | | | | | | | |

| | | | |
|------------------------------|-----------------|--------------------|-----------|
| Dedicated Acres 40 | Joint or Infill | Consolidation Code | Order No. |
|------------------------------|-----------------|--------------------|-----------|

NO ALLOWABLE WILL BE ASSIGNED TO THIS COMPLETION UNTIL ALL INTERESTS HAVE BEEN CONSOLIDATED OR A NON-STANDARD UNIT HAS BEEN APPROVED BY THE DIVISION

| | |
|--|---|
| <p>GEODETIC COORDINATES NAD 27 NME</p> <p>SURFACE LOCATION Y=589182.3 N X=874640.6 E</p> <p>LAT.=32.613872° N LONG.=103.116657° W</p> <p>LAT.=32° 36' 50" N LONG.=103° 07' 00" W</p> <p>DETAIL 3588.4' 3584.8' 600' 600' 3585.1' 3584.2'</p> | <p>OPERATOR CERTIFICATION</p> <p>I hereby certify that the information herein is true and complete to the best of my knowledge and belief, and that this organization either owns a working interest or unleased mineral interest in the land including the proposed bottom hole location or has a right to drill this well at this location pursuant to a contract with an owner of such mineral or working interest, or to a voluntary pooling agreement or a compulsory pooling order heretofore entered by the division.</p> <p><i>Sorina L. Flores</i> 3/5/14 Signature Date</p> <p>Sorina L. Flores Printed Name</p> <p>Sorina.Flores@apachecorp.com E-mail Address</p> <p>SURVEYOR CERTIFICATION</p> <p>I hereby certify that the well location shown on this plat was plotted from field notes of actual surveys made by me or under my supervision, and that the same is true and correct to the best of my belief.</p> <p>DECEMBER 31, 2013 Date of Survey</p> <p>Signature & Seal of Professional Surveyor: <i>Ronald J. Eidson</i> 12/31/14</p> <p>Certificate Number: 12641 Ronald J. Eidson 3239</p> <p>BKL JWSC W.O.: 13.11.1336</p> |
|--|---|

DISTRICT I
1625 N. French Dr., Hobbs, NM 88240
Phone: (575) 393-6161 Fax: (575) 393-0720

DISTRICT II
811 S. First St., Artesia, NM 88210
Phone: (575) 748-1283 Fax: (575) 748-9720

DISTRICT III
1000 Rio Brazos Road, Aztec, NM 87410
Phone: (505) 334-6178 Fax: (505) 334-6170

DISTRICT IV
1220 S. St. Francis Dr., Santa Fe, NM 87505
Phone: (505) 476-3460 Fax: (505) 476-3462

State of New Mexico
Energy, Minerals & Natural Resources Department
OIL CONSERVATION DIVISION
1220 South St. Francis Dr.
Santa Fe, New Mexico 87505

Form C-102
Revised August 1, 2011
Submit one copy to appropriate
District Office

☐ AMENDED REPORT

WELL LOCATION AND ACREAGE DEDICATION PLAT

| | | |
|--------------------------------|--|--------------------------------|
| API Number 30-025- | Pool Code 33210 | Pool Name House; ABO |
| Property Code 303227 | Property Name PLOW BOY FEDERAL | Well Number 2 |
| OGRID No. 873 | Operator Name APACHE CORPORATION | Elevation 3586' |

Surface Location

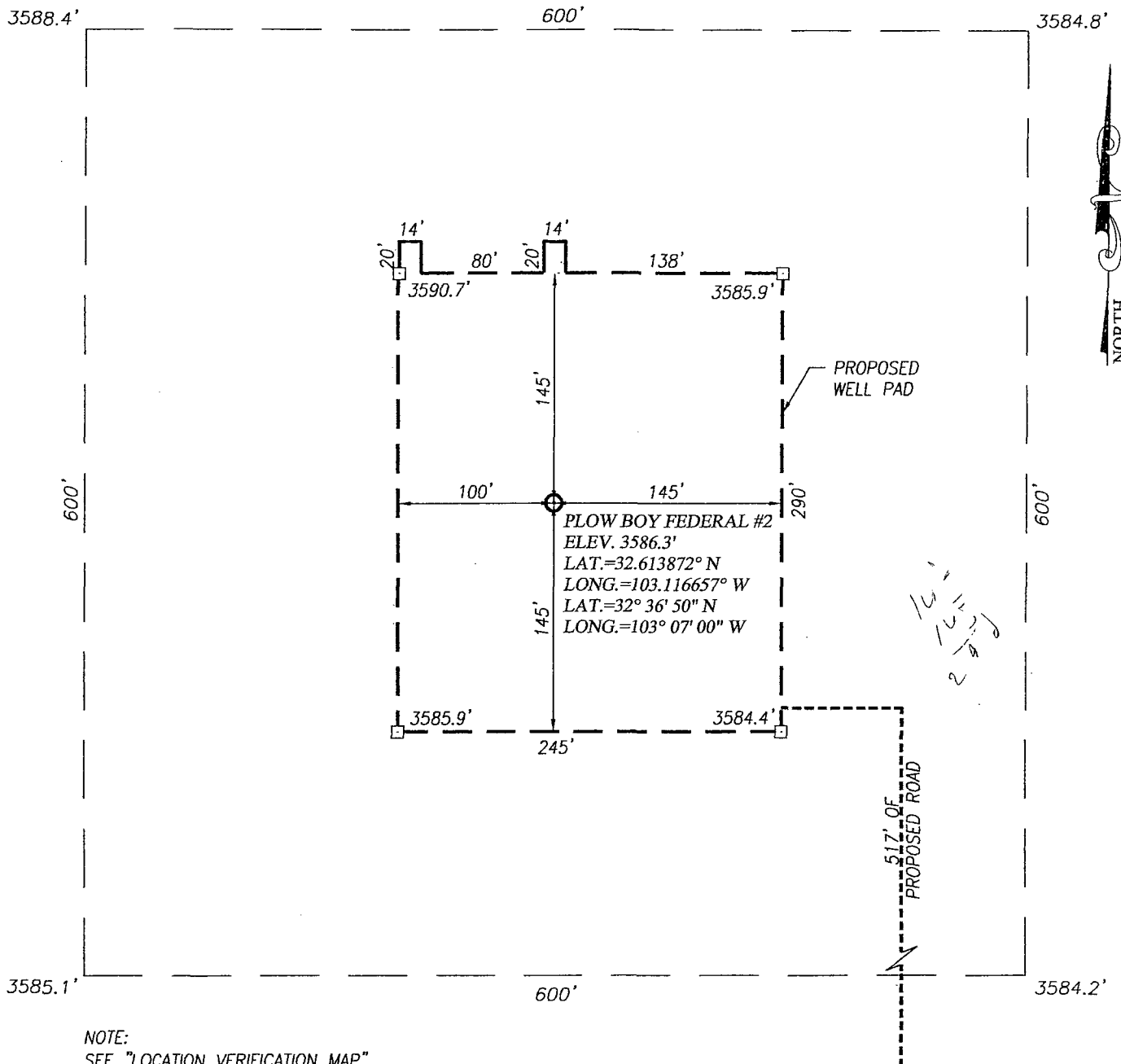
| UL or lot No. | Section | Township | Range | Lot Idn | Feet from the | North/South line | Feet from the | East/West line | County |
|---------------|---------|----------|-------|---------|---------------|------------------|---------------|----------------|--------|
| J | 35 | 19-S | 38-E | | 1650 | SOUTH | 1990 | EAST | LEA |

Bottom Hole Location If Different From Surface

| UL or lot No. | Section | Township | Range | Lot Idn | Feet from the | North/South line | Feet from the | East/West line | County |
|------------------------------|-----------------|--------------------|-----------|---------|---------------|------------------|---------------|----------------|--------|
| | | | | | | | | | |
| Dedicated Acres 40 | Joint or Infill | Consolidation Code | Order No. | | | | | | |

NO ALLOWABLE WILL BE ASSIGNED TO THIS COMPLETION UNTIL ALL INTERESTS HAVE BEEN CONSOLIDATED OR A NON-STANDARD UNIT HAS BEEN APPROVED BY THE DIVISION

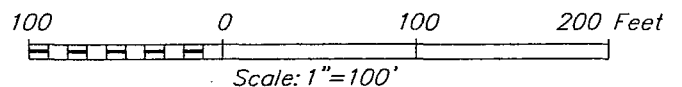
| | |
|---|---|
| <p>GEODETIC COORDINATES NAD 27 NME</p> <p>SURFACE LOCATION Y=589182.3 N X=874640.6 E</p> <p>LAT.=32.613872° N LONG.=103.116657° W</p> <p>LAT.=32° 36' 50" N LONG.=103° 07' 00" W</p> <p>DETAIL 3588.4' 3584.8' 600' 3585.1' 3584.2'</p> | <p>OPERATOR CERTIFICATION</p> <p>I hereby certify that the information herein is true and complete to the best of my knowledge and belief, and that this organization either owns a working interest or unleased mineral interest in the land including the proposed bottom hole location or has a right to drill this well at this location pursuant to a contract with an owner of such mineral or working interest, or to a voluntary pooling agreement or a compulsory pooling order heretofore entered by the division.</p> <p><i>Sorina L. Flores</i> 3/5/14 Signature Date Sorina L. Flores Printed Name sorina.flores@apachecorp.com E-mail Address</p> <p>SURVEYOR CERTIFICATION</p> <p>I hereby certify that the well location shown on this plat was plotted from field notes of actual surveys made by me or under my supervision, and that the same is true and correct to the best of my belief.</p> <p>DECEMBER 31, 2013 Date of Survey Signature & Seal of Professional Surveyor: <i>Ronald J. Eidson</i> 12/31/14 Certificate Number 12641 BKL JWSC W.O.: 13.11.1336</p> |
|---|---|



NOTE:
SEE "LOCATION VERIFICATION MAP"
FOR PROPOSED ROAD LOCATION.

DIRECTIONS TO LOCATION

FROM THE INTERSECTION OF ST. HIGHWAY 18 (EUNICE HWY) AND TIPTON ROAD; GO EAST ON TIPTON RD. APPROX. 0.5 MILES; TURN LEFT AND GO NORTHEAST APPROX. 400 FEET; VEER RIGHT AND GO SOUTHEAST APPROX. 170 FEET; VEER LEFT AND GO EAST APPROX. 0.1 MIL; TURN LEFT AND GO NORTH APPROX. 0.2 MILES TO A PROPOSED STAKED ROAD SURVEY. FOLLOW PROPOSED ROAD SURVEY NORTH APPROX. 440 FEET, THEN WEST APPROX. 75 FEET. THIS WELL LOCATION IS NORTHWEST APPROX. 195'.



APACHE CORPORATION

PLOW BOY FEDERAL #2 WELL
LOCATED 1650 FEET FROM THE SOUTH LINE
AND 1990 FEET FROM THE EAST LINE OF SECTION 35,
TOWNSHIP 19 SOUTH, RANGE 38 EAST, N.M.P.M.,
LEA COUNTY, NEW MEXICO

Survey Date: 12/31/13

CAD Date: 1/24/14


Drawn By: BKL

W.O. No.: 13111336

Rev: Q1/31/14

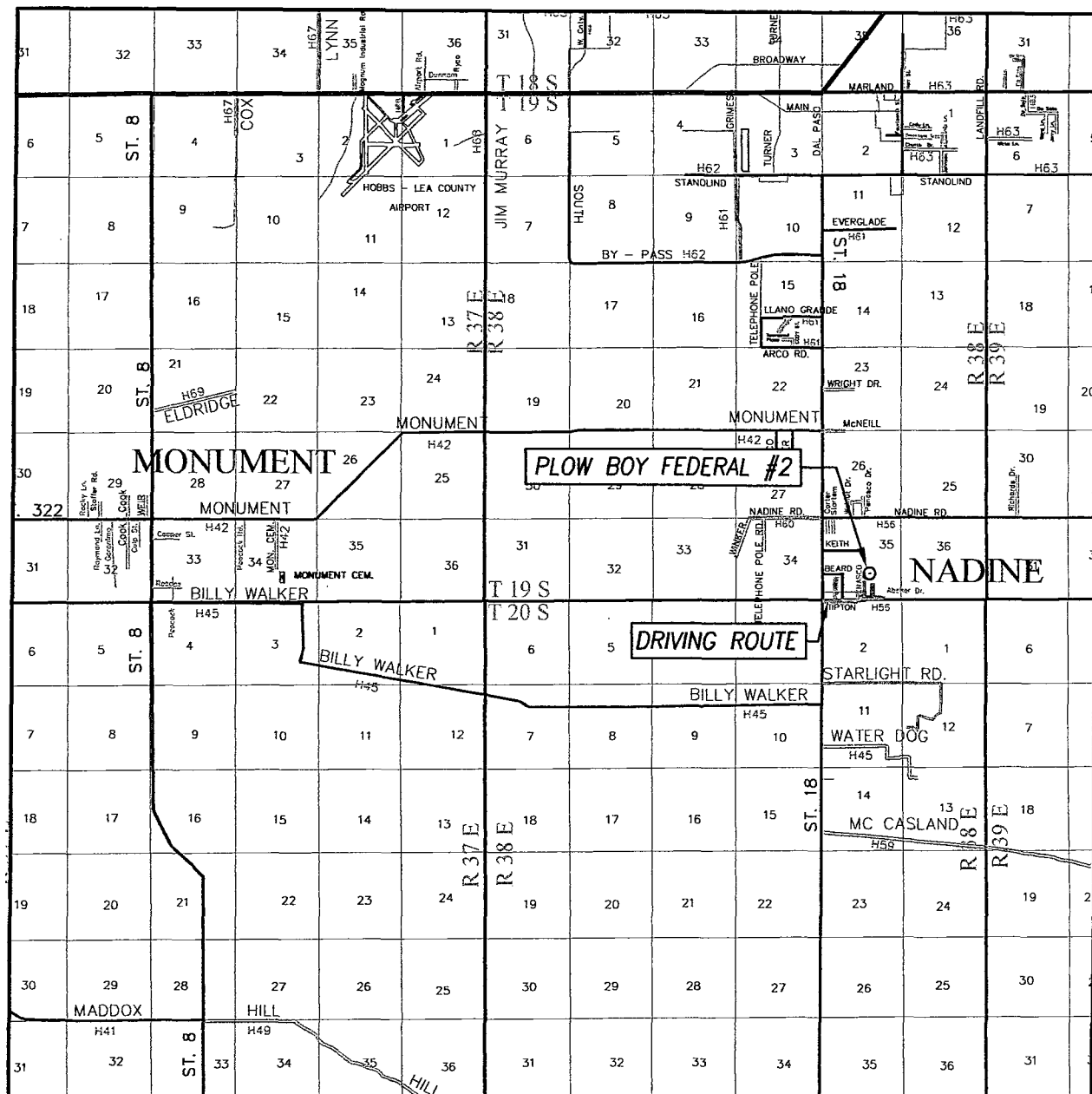
Rel. W.O.:

Sheet 1 of 1



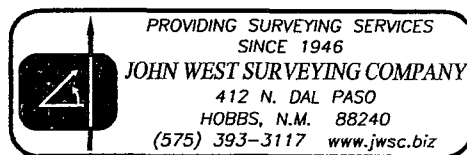
PROVIDING SURVEYING SERVICES
SINCE 1946
JOHN WEST SURVEYING COMPANY
412 N. DAL PASO
HOBBS, N.M. 88240
(575) 393-3117 www.jwsc.biz

NORTH

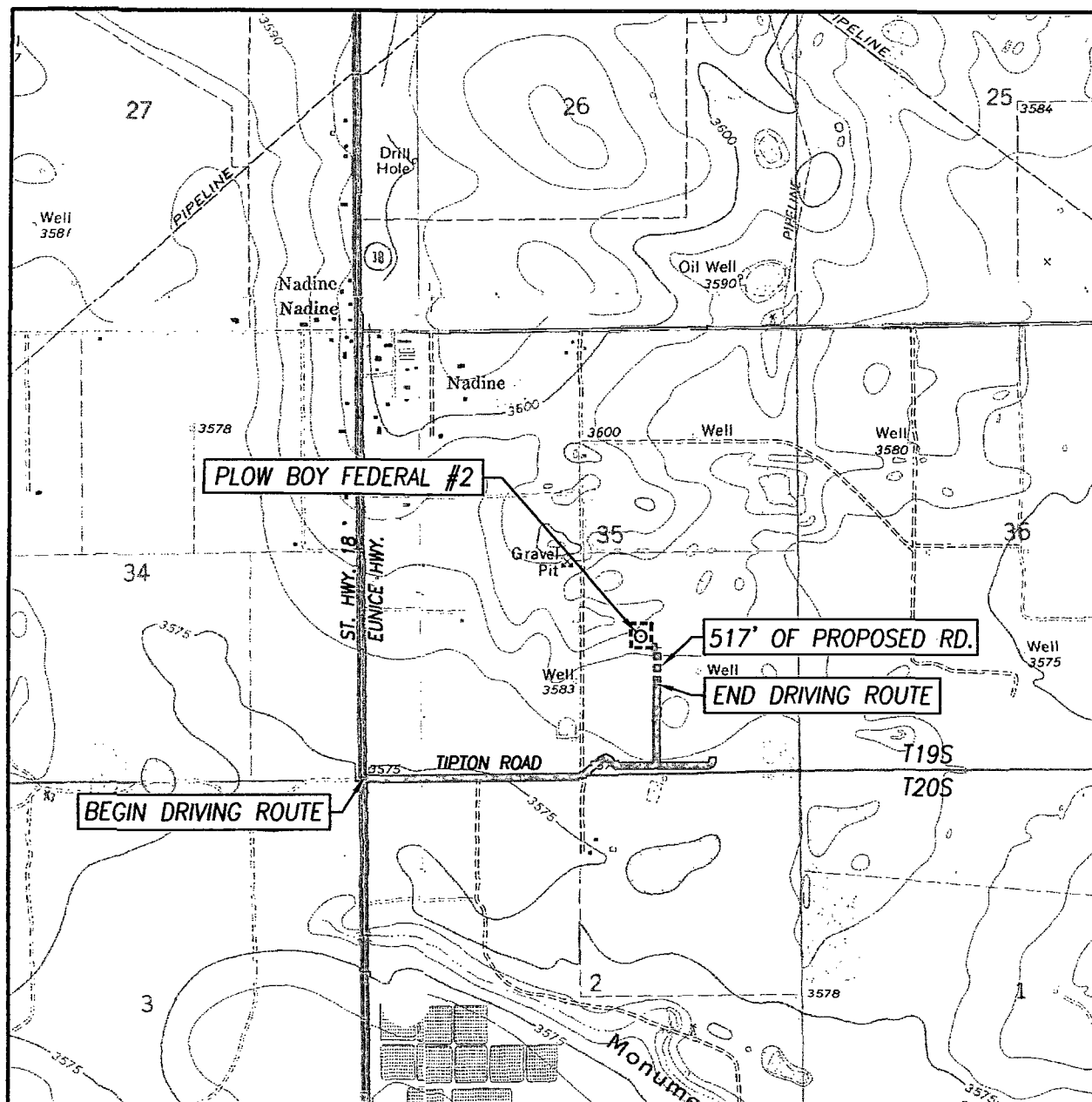


DRIVING ROUTE: SEE LOCATION VERIFICATION MAP

LEASE PLOW BOY FEDERAL



LOCATION VERIFICATION MAP



SCALE: 1" = 2000'

CONTOUR INTERVAL:

HOBBS EAST - 5' HOBBS SOUTHWEST - 5'
HOBBS WEST - 5' HOBBS SOUTHEAST - 5'

SEC. 35 TWP. 19-S RGE. 38-E

DIRECTIONS TO LOCATION

SURVEY N.M.P.M.

COUNTY LEA STATE NEW MEXICO

DESCRIPTION 1650' FSL & 1990' FEL

ELEVATION 3586'

FROM THE INTERSECTION OF ST. HIGHWAY 18 (EUNICE HWY) AND TIPTON ROAD; GO EAST ON TIPTON RD. APPROX. 0.5 MILES; TURN LEFT AND GO NORTHEAST APPROX. 400 FEET; VEER RIGHT AND GO SOUTHEAST APPROX. 170 FEET; VEER LEFT AND GO EAST APPROX. 0.1 MIL; TURN LEFT AND GO NORTH APPROX. 0.2 MILES TO A PROPOSED STAKED ROAD SURVEY. FOLLOW PROPOSED ROAD SURVEY NORTH APPROX. 440 FEET, THEN WEST APPROX. 75 FEET. THIS WELL LOCATION IS NORTHWEST APPROX. 195'.

OPERATOR APACHE CORPORATION

LEASE PLOW BOY FEDERAL

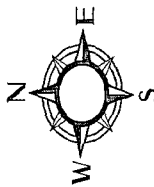
U.S.G.S. TOPOGRAPHIC MAP

HOBBS SOUTHEAST, N.M.

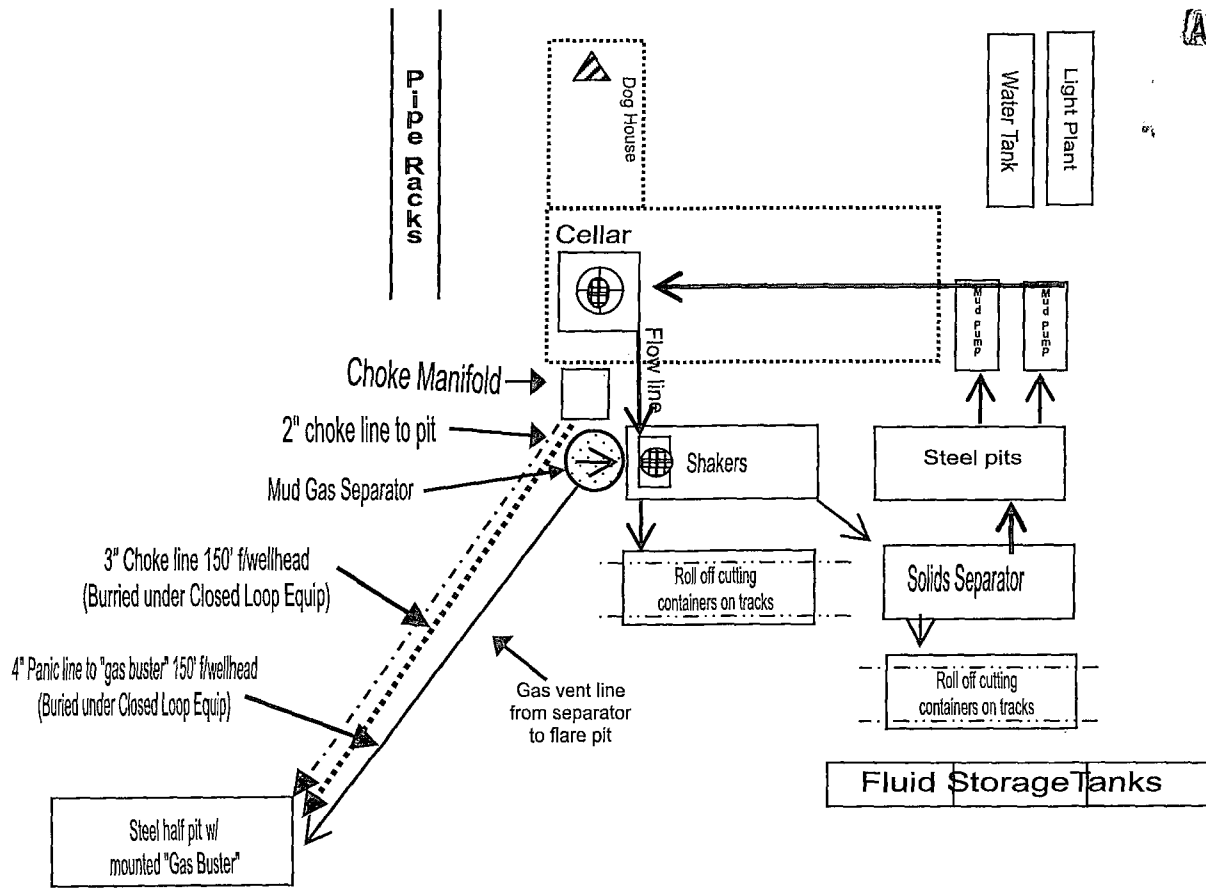
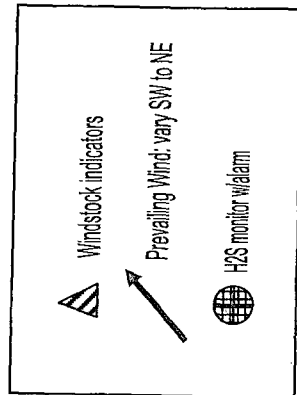
PROVIDING SURVEYING SERVICES
SINCE 1946
JOHN WEST SURVEYING COMPANY
412 N. DAL PASO
HOBBS, N.M. 88240
(575) 393-3117 www.jwsc.biz



Drilling Location
H2S Safety Equipment Diagram
Exhibit 3A



FLOW BOY FEDERAL #2



Secondary Egress

TRAILER

TRAILER

Primary briefing area w/SCBA

H2S Warning Sign
~ 200' but no more than 500' from well location

Approx 517' of new road

HOBBS OCD

APR 27 2015

RECEIVED