

APR 30 2015

RECEIVED

Form C-102
Revised August 1, 2011
Submit one copy to appropriate
District Office


☐ AMENDED REPORT

| | | |
|-----------------------------------------|---------------------------------------------------------------------|-------------------------------------------------------------------|
| ¹ API Number 30-025-42536 | ² Pool Code 97784 | ³ Pool Name WC-025 G-06 S253201M; UPPER BONE SPRING |
| ⁴ Property Code 39747 | ⁵ Property Name BELL LAKE 19 STATE | ⁶ Well Number 6H |
| ⁷ OGRID No. 6137 | ⁸ Operator Name DEVON ENERGY PRODUCTION COMPANY, L.P. | ⁹ Elevation 3541.6 |

| | | | | | | | | | |
|---------------|---------|----------|-------|---------|---------------|------------------|---------------|----------------|--------|
| UL or lot no. | Section | Township | Range | Lot Idn | Feet from the | North/South line | Feet from the | East/West line | County |
| 4 | 19 | 24 S | 33 E | | 330 | SOUTH | 285 | WEST | LEA |

| | | | | | | | | | |
|---------------|---------|----------|-------|---------|---------------|------------------|---------------|----------------|--------|
| UL or lot no. | Section | Township | Range | Lot Idn | Feet from the | North/South line | Feet from the | East/West line | County |
| 1 | 19 | 24 S | 33 E | | 330 | NORTH | 350 | WEST | LEA |

| | | | |
|-----------------------------------------|-------------------------------|----------------------------------|-------------------------|
| ¹² Dedicated Acres 155.44 | ¹³ Joint or Infill | ¹⁴ Consolidation Code | ¹⁵ Order No. |
|-----------------------------------------|-------------------------------|----------------------------------|-------------------------|

| OPERATOR CERTIFICATION | |
|-------------------------------------------------------------------------------------------------------------------------------------------------------------------------------------------------------------------------------------------------------------------------------------------------------------------------------------------------------------------------------------------------------------------------------------------------------------------------------------------------------------|-----------------------|
| I hereby certify that the information contained herein is true and complete to the best of my knowledge and belief, and that this organization either owns a working interest or undivided mineral interest in the land including the proposed nonconformable location or has a right to drill this well at this location pursuant to a contract with an owner of such a mineral or working interest, or to a voluntary pooling agreement or a compulsory pooling order heretofore entered by the division. | |
| Signature David H. Cook | Date 4/22/2015 |
| david.cook@dvn.com | |
| E-mail Address | |
| SURVEYOR CERTIFICATION | |
| I hereby certify that the well location shown on this plat was plotted from field notes of actual surveys made by me or under my supervision, and that the same are true and correct to the best of my belief. | |
| APRIL 10, 2015 | |
| Date of Survey | |
|  <p style="position: absolute; top: 0; left: 0; width: 100%;">The signature area contains several handwritten signatures over the official seal.</p> | |
| Signature and Seal of Professional Surveyor: Certificate Number: WILLIAM F. JARAMILLO, PLS 12797 | |
| SURVEY NO. 3879 | |

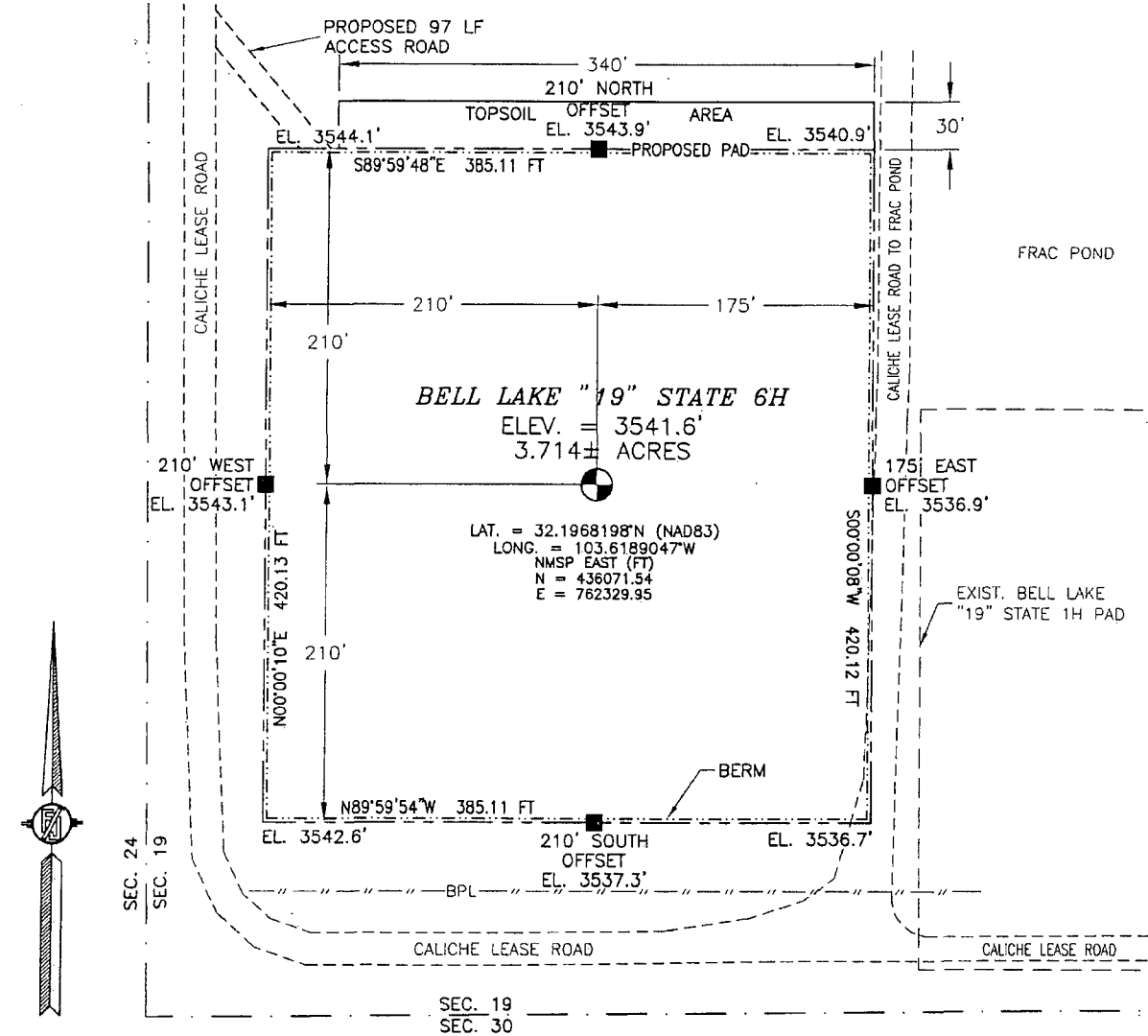
PP: 930 FSL & 350 FWL

MAY 05 2015

SECTION 19, TOWNSHIP 24 SOUTH, RANGE 33 EAST, N.M.P.M.
LEA COUNTY, STATE OF NEW MEXICO

SITE MAP

NOTE: LATITUDE AND LONGITUDE COORDINATES ARE SHOWN USING THE NORTH AMERICAN DATUM OF 1983 (NAD83). LISTED NEW MEXICO STATE PLANE EAST COORDINATES ARE GRID (NAD83). BASIS OF BEARING AND DISTANCES USED ARE NEW MEXICO STATE PLANE EAST COORDINATES MODIFIED TO THE SURFACE



010 50 100 200

SCALE 1" = 100'

DIRECTIONS TO LOCATION

FROM THE INTERSECTION OF CR 1 (ORLA ROAD) AND STATE HIGHWAY 128 (JAL. HIGHWAY) GO EAST ON STATE HIGHWAY 128 FOR ABOUT 3.0 MILES, TURN RIGHT AT CALICHE LEASE ROAD, GO SOUTH ABOUT 0.87 MILE, TURN LEFT GO SOUTHEAST ABOUT 97' TO THE NORTHWEST PAD CORNER.

DEVON ENERGY PRODUCTION COMPANY, L.P.

BELL LAKE "19" STATE 6H

LOCATED 330 FT. FROM THE SOUTH LINE
AND 285 FT. FROM THE WEST LINE OF

SECTION 19, TOWNSHIP 24 SOUTH,
RANGE 33 EAST, N.M.P.M.

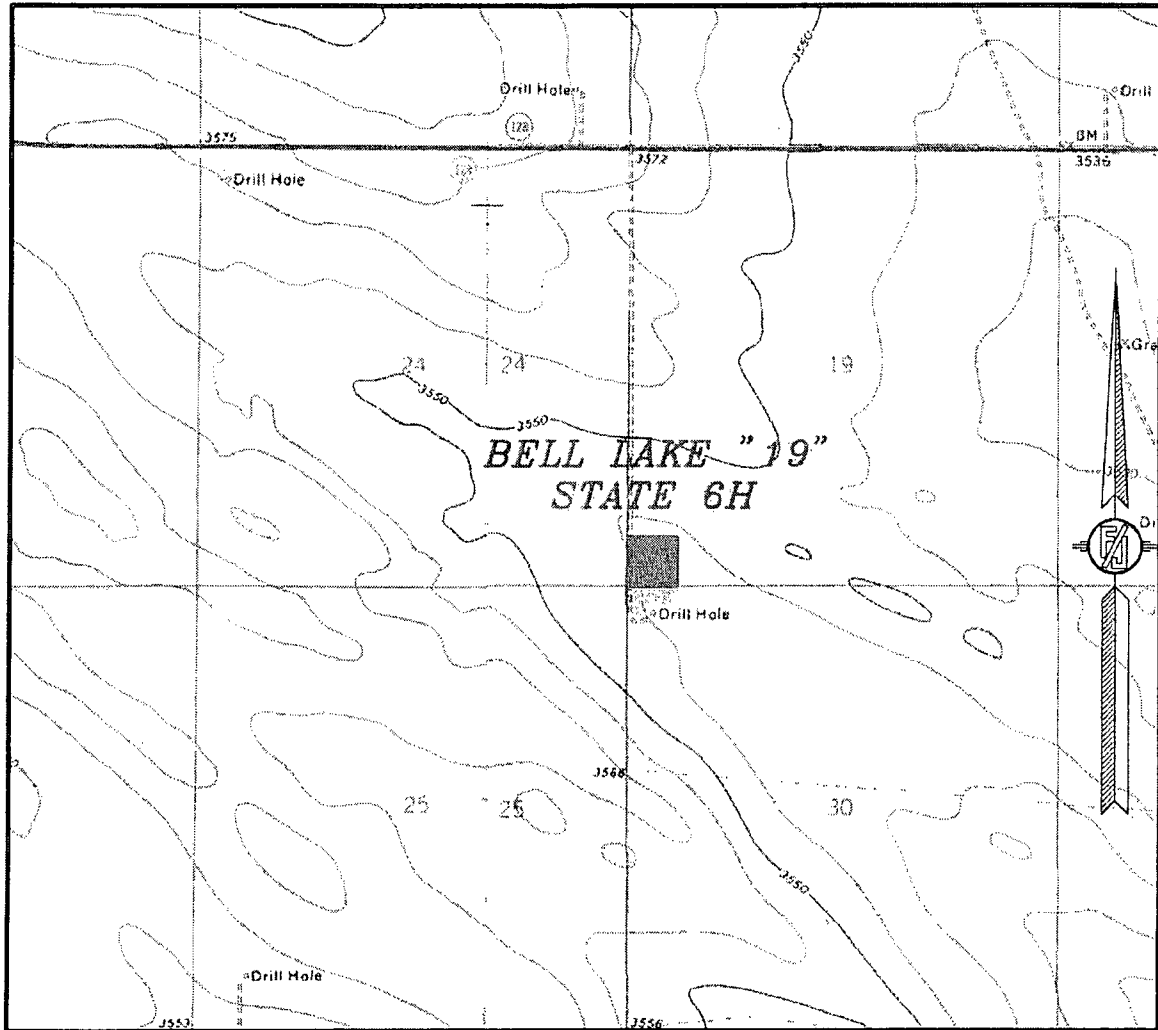
LEA COUNTY, STATE OF NEW MEXICO

APRIL 10, 2015

SURVEY NO. 3879

MADRON SURVEYING, INC. 301 SOUTH CANAL (575) 234-3341 CARLSBAD, NEW MEXICO

SECTION 19, TOWNSHIP 24 SOUTH, RANGE 33 EAST, N.M.P.M.
LEA COUNTY, STATE OF NEW MEXICO
LOCATION VERIFICATION MAP



USGS QUAD MAP:
BELL LAKE

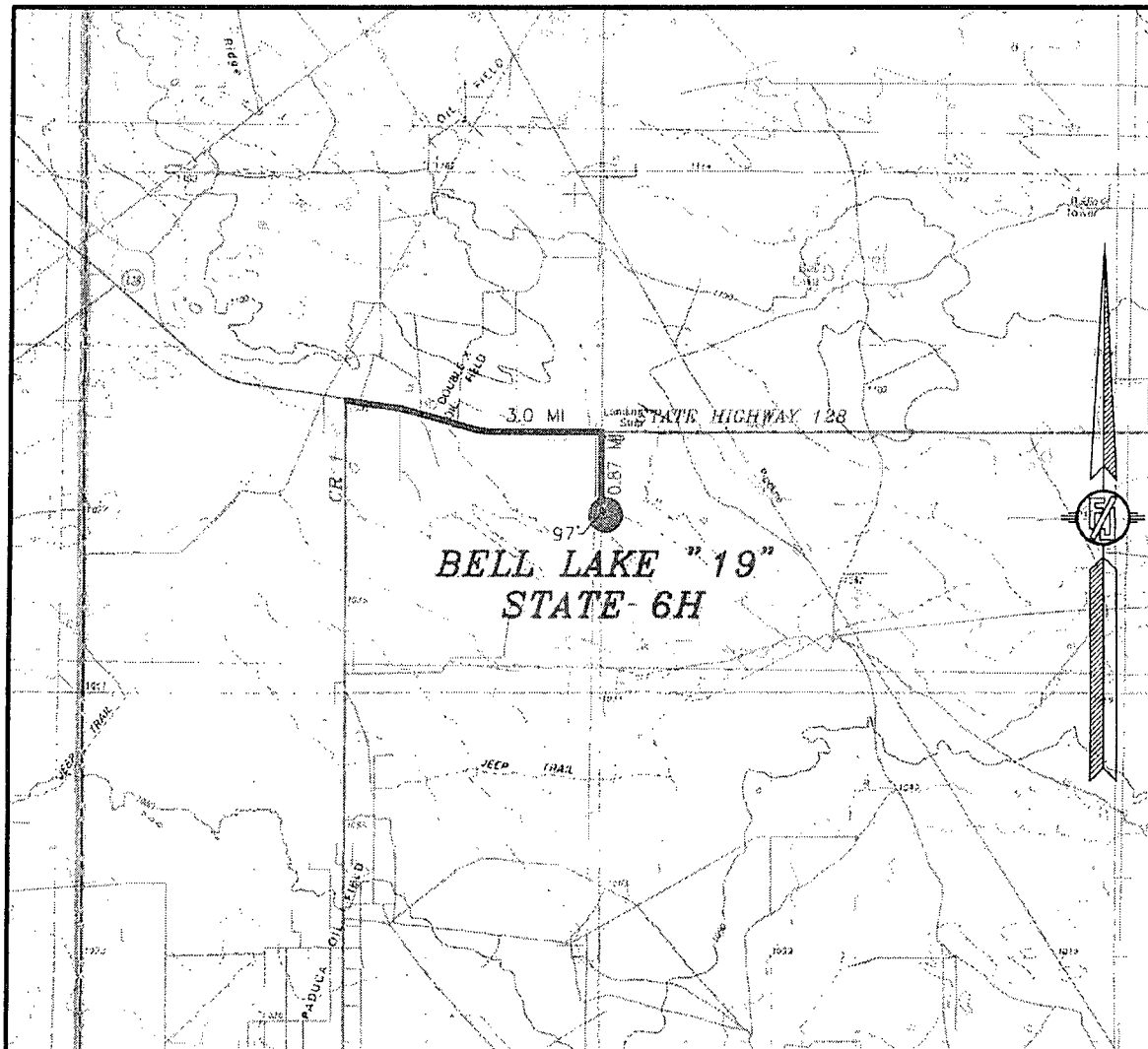
NOT TO SCALE

DEVON ENERGY PRODUCTION COMPANY, L.P.
BELL LAKE "19" STATE 6H
LOCATED 330 FT. FROM THE SOUTH LINE
AND 285 FT. FROM THE WEST LINE OF
SECTION 19, TOWNSHIP 24 SOUTH,
RANGE 33 EAST, N.M.P.M.
LEA COUNTY, STATE OF NEW MEXICO

APRIL 10, 2015

MADRON SURVEYING, INC. 301 SOUTH CANAL (575) 234-3341 CARLSBAD, NEW MEXICO SURVEY NO. 3879

SECTION 19, TOWNSHIP 24 SOUTH, RANGE 33 EAST, N.M.P.M.
LEA COUNTY, STATE OF NEW MEXICO
VICINITY MAP



DISTANCES IN MILES

NOT TO SCALE

DEVON ENERGY PRODUCTION COMPANY, L.P.

BELL LAKE "19" STATE 6H

LOCATED 330 FT. FROM THE SOUTH LINE

AND 285 FT. FROM THE WEST LINE OF

SECTION 19, TOWNSHIP 24 SOUTH,

RANGE 33 EAST, N.M.P.M.

LEA COUNTY, STATE OF NEW MEXICO

DIRECTIONS TO LOCATION

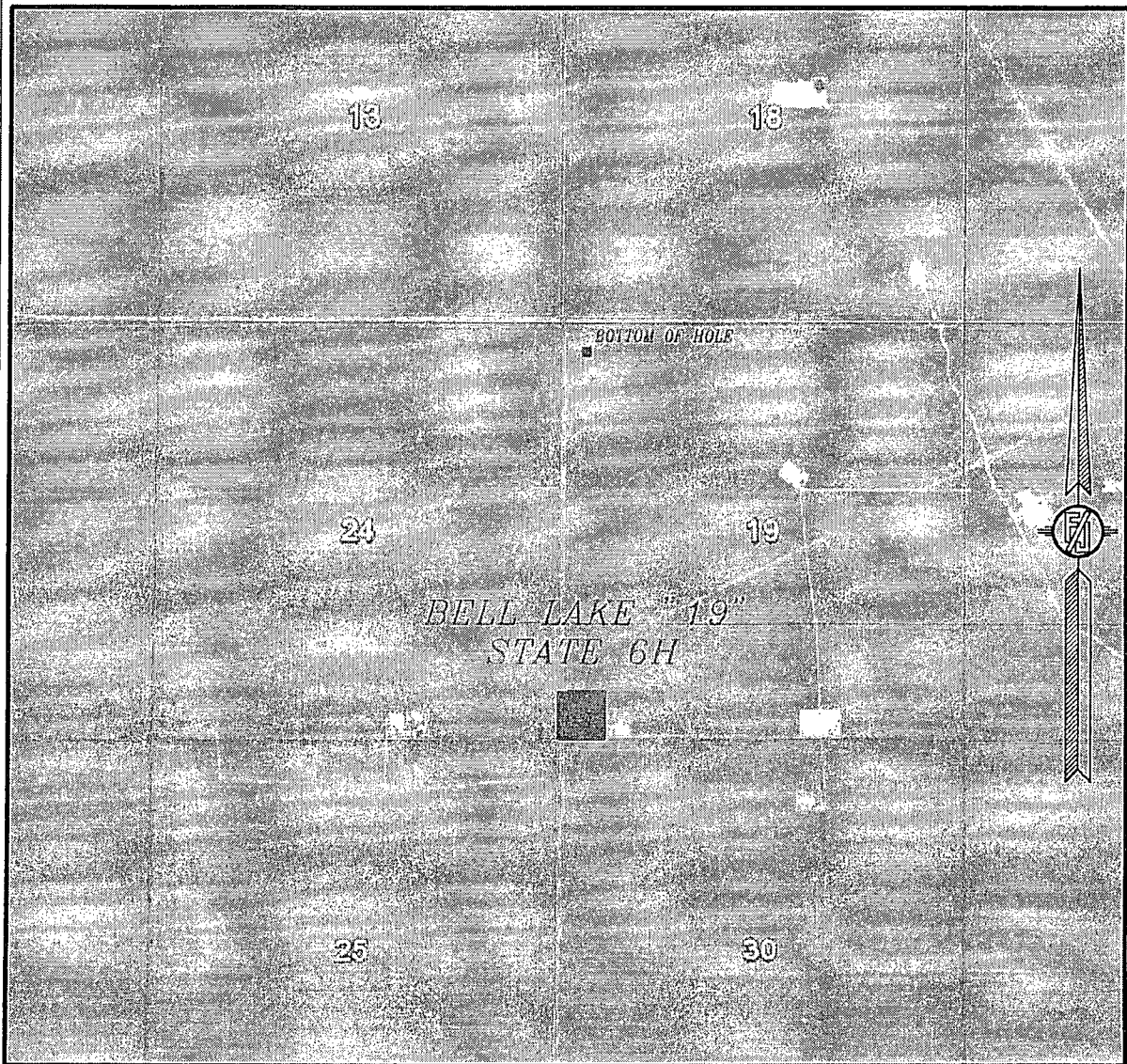
FROM THE INTERSECTION OF CR 1 (ORLA ROAD) AND STATE HIGHWAY 128 (JAL HIGHWAY) GO EAST ON STATE HIGHWAY 128 FOR ABOUT 3.0 MILES, TURN RIGHT AT CALICHE LEASE ROAD, GO SOUTH ABOUT 0.87 MILE, TURN LEFT GO SOUTHEAST ABOUT 97° TO THE NORTHWEST PAD CORNER.

APRIL 10, 2015

SURVEY NO. 3879

MADRON SURVEYING, INC. 301 SOUTH CANAL (575) 234-3341 CARLSBAD, NEW MEXICO

SECTION 19, TOWNSHIP 24 SOUTH, RANGE 33 EAST, N.M.P.M.
LEA COUNTY, STATE OF NEW MEXICO
AERIAL PHOTO



NOT TO SCALE
AERIAL PHOTO:
GOOGLE EARTH
FEBRUARY 2014

DEVON ENERGY PRODUCTION COMPANY, L.P.

BELL LAKE "19" STATE 6H

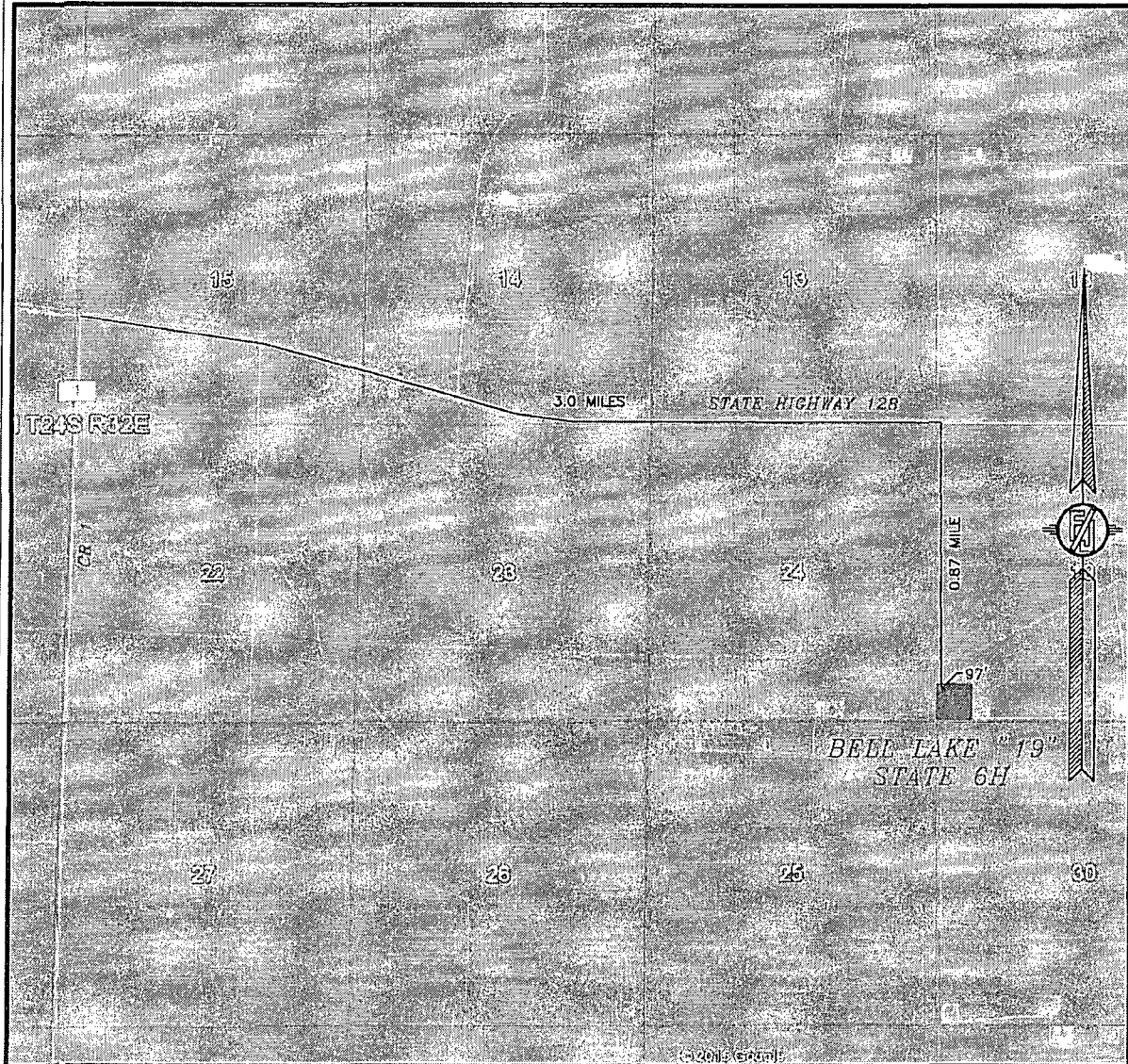
LOCATED 330 FT. FROM THE SOUTH LINE
AND 285 FT. FROM THE WEST LINE OF
SECTION 19, TOWNSHIP 24 SOUTH,
RANGE 33 EAST, N.M.P.M.
LEA COUNTY, STATE OF NEW MEXICO

APRIL 10, 2015

SURVEY NO. 3879

MADRON SURVEYING, INC. 301 SOUTH CANAL (575) 234-3341 CARLSBAD, NEW MEXICO

SECTION 19, TOWNSHIP 24 SOUTH, RANGE 33 EAST, N.M.P.M.
LEA COUNTY, STATE OF NEW MEXICO
ACCESS AERIAL ROUTE MAP



NOT TO SCALE
AERIAL PHOTO:
GOOGLE EARTH
FEBRUARY 2014

DEVON ENERGY PRODUCTION COMPANY, L.P.

BELL LAKE "19" STATE 6H

LOCATED 330 FT. FROM THE SOUTH LINE
AND 285 FT. FROM THE WEST LINE OF
SECTION 19, TOWNSHIP 24 SOUTH,
RANGE 33 EAST, N.M.P.M.
LEA COUNTY, STATE OF NEW MEXICO

APRIL 10, 2015

SURVEY NO. 3879

MADRON SURVEYING, INC. 301 SOUTH CANAL (575) 234-3341 CARLSBAD, NEW MEXICO