

DISTRICT I
1625 N. 1st St. Dr., Hobbs, NM 88240
Phone: (575) 393-6161 Fax: (575) 393-0720

DISTRICT II
911 S. First St., Artesia, NM 88210
Phone: (575) 746-1237 Fax: (575) 746-0720

DISTRICT III
1009 Rio Grande Rd., Artesia, NM 88210
Phone: (505) 324-6171 Fax: (505) 324-6170

DISTRICT IV
1220 S. St. Francis Dr., Santa Fe, NM 87505
Phone: (505) 476-3400 Fax: (505) 476-3402

State of New Mexico
Energy, Minerals & Natural Resources Department
OIL CONSERVATION DIVISION
1220 South St. Francis Dr.
Santa Fe, New Mexico 87505

HOBBS OGD
MAY 05 2015

RECEIVED

Form C-102

Revised August 1, 2011

Submit one copy to appropriate

District Office

☐ AMENDED REPORT

WELL LOCATION AND ACREAGE DEDICATION PLAT

API Number 30-025 42549	Pool Code 96100	Pool Name SWD; Delaware
Property Code 314800	Property Name WOOLWORTH SWD	Well Number 1
OGRID No. 308339	Operator Name OWL SWD Operating, L.L.C.	Elevation 3412'

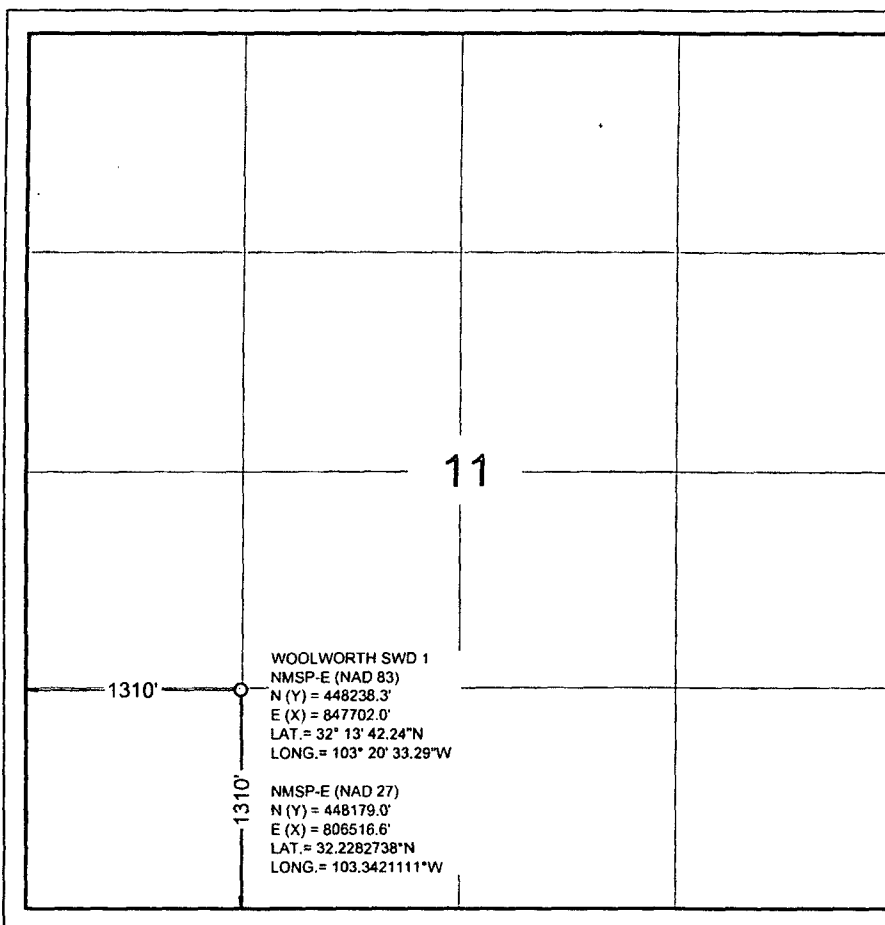
Surface Location

UL or lot no.	Section	Township	Range	Lot Idn	Feet from the	North/South line	Feet from the	East/West line	County
M	11	24S	35E		1310	S	1310	W	LEA

Bottom Hole Location If Different From Surface

UL or lot no.	Section	Township	Range	Lot Idn	Feet from the	North/South line	Feet from the	East/West line	County
Dedicated Acres		Joint or Infill		Consolidated Code		Order No.			

No allowable will be assigned to this completion until all interests have been consolidated or a non-standard unit has been approved by the division.



OPERATOR CERTIFICATION

I hereby certify that the information contained herein is true and complete to the best of my knowledge and belief, and that this organization either owns a working interest or unleased mineral interest in the land including the proposed bottom hole location or has a right to drill this well at this location pursuant to a contract with an owner of such a mineral or working interest, or to voluntary pooling agreement or a compulsory pooling order heretofore entered by the division.

Billy E. Prichard 5/1/15
Signature Date

Billy E. Prichard - Agent for OWL SWD Operating

Print Name

billy@pwlc.net

E-mail Address

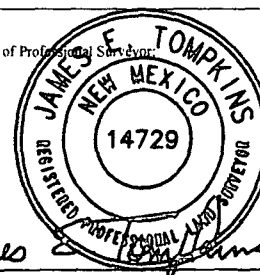
SURVEYORS CERTIFICATION

I hereby certify that the well location shown on this plat was plotted from field notes of actual surveys made by me or under my supervision, and that the same is true and correct to the best of my belief.

APRIL 17, 2015

Date of Survey

Signature and Seal of Professional Surveyor



Job No. WTC50633

JAMES E. TOMPKINS 14729

Certificate Number

MAY 07 2015