

DISTRICT I
1625 N. French Dr., Hobbs, NM 88240
Phone: (575) 393-6161 Fax: (575) 393-0720
DISTRICT II
811 S. First St., Artesia, NM 88210
Phone: (575) 748-1283 Fax: (575) 748-9720
DISTRICT III
1000 Rio Brazos Rd., Artesia, NM 87410
Phone: (505) 334-6178 Fax: (505) 334-6170
DISTRICT IV
1220 S. St. Francis Dr., Santa Fe, NM 87505
Phone: (505) 476-3460 Fax: (505) 476-3462

State of New Mexico
Energy, Minerals & Natural Resources Department
OIL CONSERVATION DIVISION
1220 South St. Francis Dr.
Santa Fe, New Mexico 87505

HOBBS OCD

Form C-102

Revised August 1, 2011

Submit one copy to appropriate
District Office

MAY 12 2015

RECEIVED AMENDED REPORT

WELL LOCATION AND ACREAGE DEDICATION PLAT

API Number 30-025-42556	Pool Code 39564 2209	Pool Name Antelope Ridge West Bone Spring
Property Code 314805	Property Name WILDCAT 21 MP FED COM	Well Number 1H
OGRID No. 14744	Operator Name MEWBOURNE OIL COMPANY	Elevation 3497'

Surface Location

UL or lot no.	Section	Township	Range	Lot Idn	Feet from the	North/South line	Feet from the	East/West line	County
M	21	23 S	34 E		1160	SOUTH	150	WEST	EDDY

Bottom Hole Location If Different From Surface

UL or lot no.	Section	Township	Range	Lot Idn	Feet from the	North/South line	Feet from the	East/West line	County
P	21	23 S	34 E		330	SOUTH	330	EAST	EDDY

Dedicated Acres 160	Joint or Infill	Consolidated Code	Order No.
-------------------------------	-----------------	-------------------	-----------

No allowable will be assigned to this completion until all interests have been consolidated or a non-standard unit has been approved by the division.

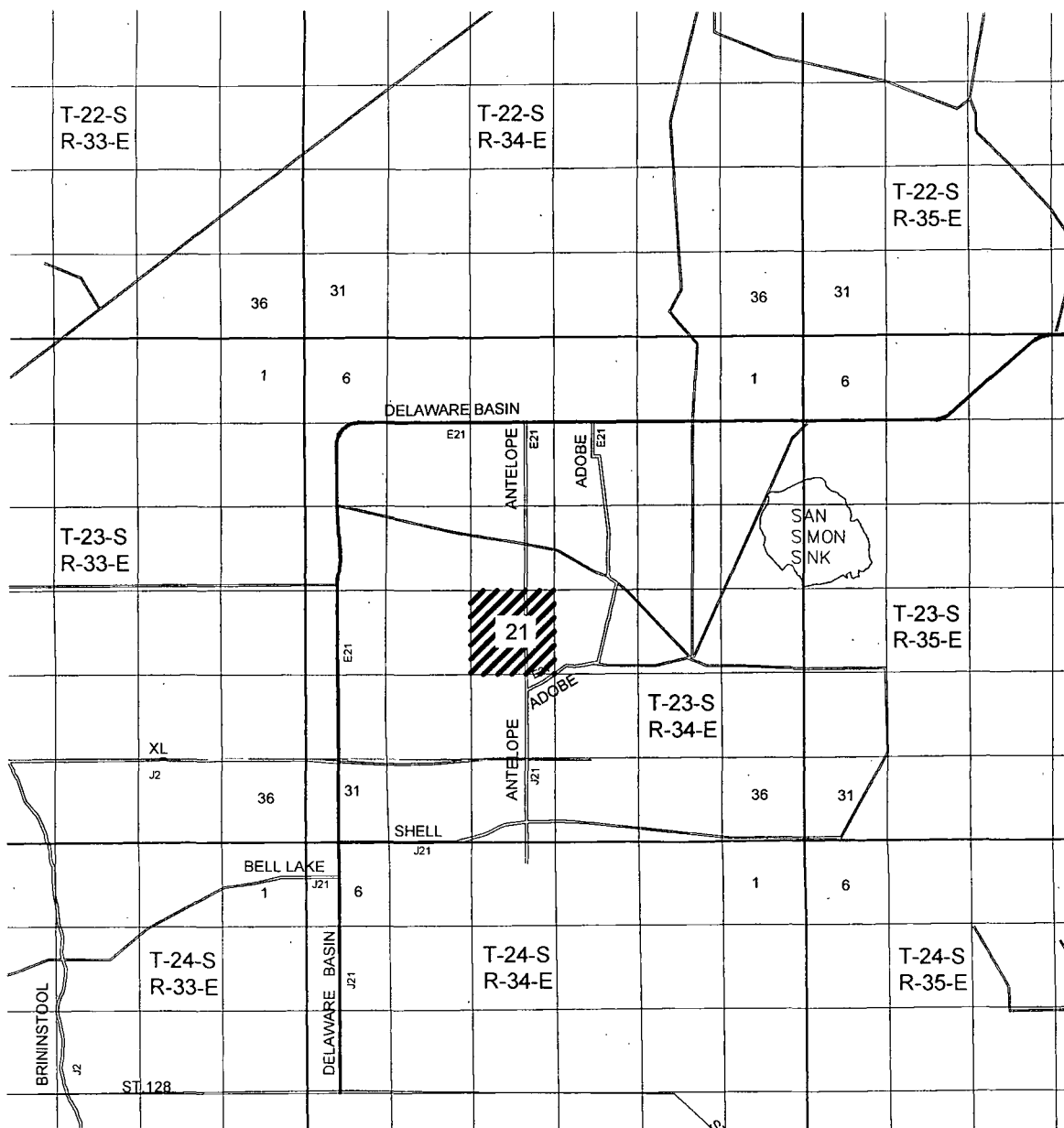
<p>W/4 COR SEC 21 NMSP-E (NAD 83) Y = 470317.2' N X = 803933.1' E LAT. = N32°17'24.42" LONG. = W103°29'00.76"</p>		<p>E/4 COR SEC 21 NMSP-E (NAD 83) Y = 470358.5' N X = 809208.4' E LAT. = N32°17'24.41" LONG. = W103°27'59.31"</p>		<p>OPERATOR CERTIFICATION I hereby certify that the information contained herein is true and complete to the best of my knowledge and belief, and that this organization either owns a working interest or unleased mineral interest in the land including the proposed bottom hole location or has a right to drill this well at this location pursuant to a contract with an owner of such a mineral or working interest, or to voluntary pooling agreement or a compulsory pooling order heretofore entered by the division.</p> <p><i>Bradley Bishop</i> 12-17-13 Signature Date BRADLEY BISHOP Print Name E-mail Address</p>
<p>WILDCAT 21 MP FED COM 1H SHL NMSP-E (NAD 83) Y = 468838.7' N X = 804096.3' E N LAT. = 32°17'09.77" W LONG. = -103°28'59.00"</p>	<p>Project Area</p>	<p>Producing Area</p>	<p>WILDCAT 21 MP FED COM 1H BHL NMSP-E (NAD 83) Y = 468045.9' N X = 808898.9' E N LAT. = 32°17'01.55" W LONG. = -103°28'03.13"</p>	<p>SURVEYORS CERTIFICATION I hereby certify that the well location shown on this plat was plotted from field notes of actual surveys made by me or under my supervision, and that the same is true and correct to the best of my belief.</p> <p>Feb. 20, 2013 Date of Survey Signature and Seal of Professional Surveyor JAMES E. TOMPKINS 14729 Job No. WTC48915 JAMES E. TOMPKINS 14729 Certificate Number</p>
<p>NMSP-E (NAD 27) Y = 468779.2' N X = 762912.6' E N LAT. = 32.285924382° W LONG. = -103.482576343°</p>	<p>SE COR SEC 21 NMSP-E (NAD 83) Y = 467718.5' N X = 809231.8' E LAT. = N32°18'58.28" LONG. = W103°27'59.28"</p>		<p>SW COR SEC 21 NMSP-E (NAD 83) Y = 467677.6' N X = 803956.7' E LAT. = N32°16'58.30" LONG. = W103°29'00.73"</p>	

PM

MAY 12 2015

3A

VICINITY MAP



GRAPHIC SCALE 1" = 1 MILE

SECTION 21, T 23 S, R 34 E, N.M.P.M.

COUNTY: EDDY STATE: NM

DESCRIPTION: 1160' FSL & 150' FWL

OPERATOR: MEWBOURNE OIL COMPANY

WELL NAME: WILDCAT 21 MP FED COM-1H

DRIVING DIRECTIONS:

From the intersection of the Delaware Basin Road & Antelope Road. Go south on Antelope Road 2.9 miles to a lease road right. Go west on lease road for 0.75 mile to a trail road right. Go north 0.1 mile to the proposed lease road right and the location flag is $\pm 660'$ southeast.



WEST TEXAS CONSULTANTS, INC.
ENGINEERS PLANNERS SURVEYORS
405 S.W. 1st STREET
ANDREWS, TEXAS 79714
(432) 523-2181

MEWBOURNE OIL COMPANY

JOB No.: WTC48915

AERIAL MAP



GRAPHIC SCALE 1" = 2000'

SECTION 21, T 23 S, R 34 E, N.M.P.M.

COUNTY: EDDY STATE: NM

DESCRIPTION: 1160' FSL & 150' FWL

OPERATOR: MEWBOURNE OIL COMPANY

WELL NAME: WILDCAT 21 MP FED COM-1H

DRIVING DIRECTIONS:

From the intersection of the Delaware Basin Road & Antelope Road. Go south on Antelope Road 2.9 miles to a lease road right. Go west on lease road for 0.75 mile to a trail road right. Go north 0.1 mile to the proposed lease road right and the location flag is $\pm 660'$ southeast.



WEST TEXAS CONSULTANTS, INC.
ENGINEERS PLANNERS SURVEYORS
405 S.W. 1st. STREET
ANDREWS, TEXAS 79714
(432) 523-2181

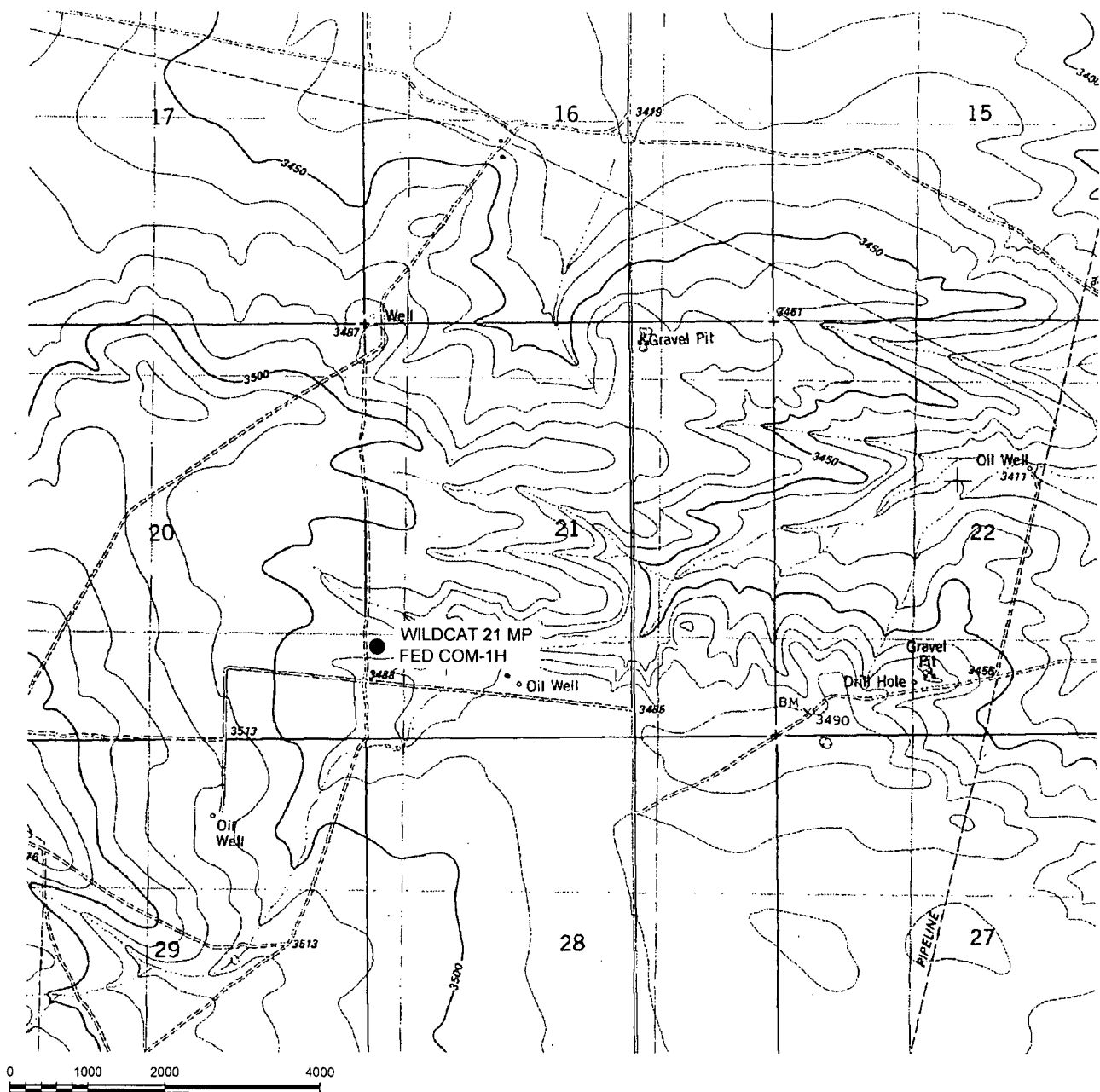
MEWBOURNE OIL COMPANY

JOB No.: WTC48915

[illegible]

30

LOCATION VERIFICATION MAP



GRAPHIC SCALE 1" = 2000'

SECTION 21, T 23 S, R 34 E, N.M.P.M.

COUNTY: EDDY STATE: NM

DESCRIPTION: 1160' FSL & 150' FWL

OPERATOR: MEWBOURNE OIL COMPANY

WELL NAME: WILDCAT 21 MP FED COM-1H

DRIVING DIRECTIONS:

From the intersection of the Delaware Basin Road & Antelope Road. Go south on Antelope Road 2.9 miles to a lease road right. Go west on lease road for 0.75 mile to a trail road right. Go north 0.1 mile to the proposed lease road right and the location flag is $\pm 660'$ southeast.

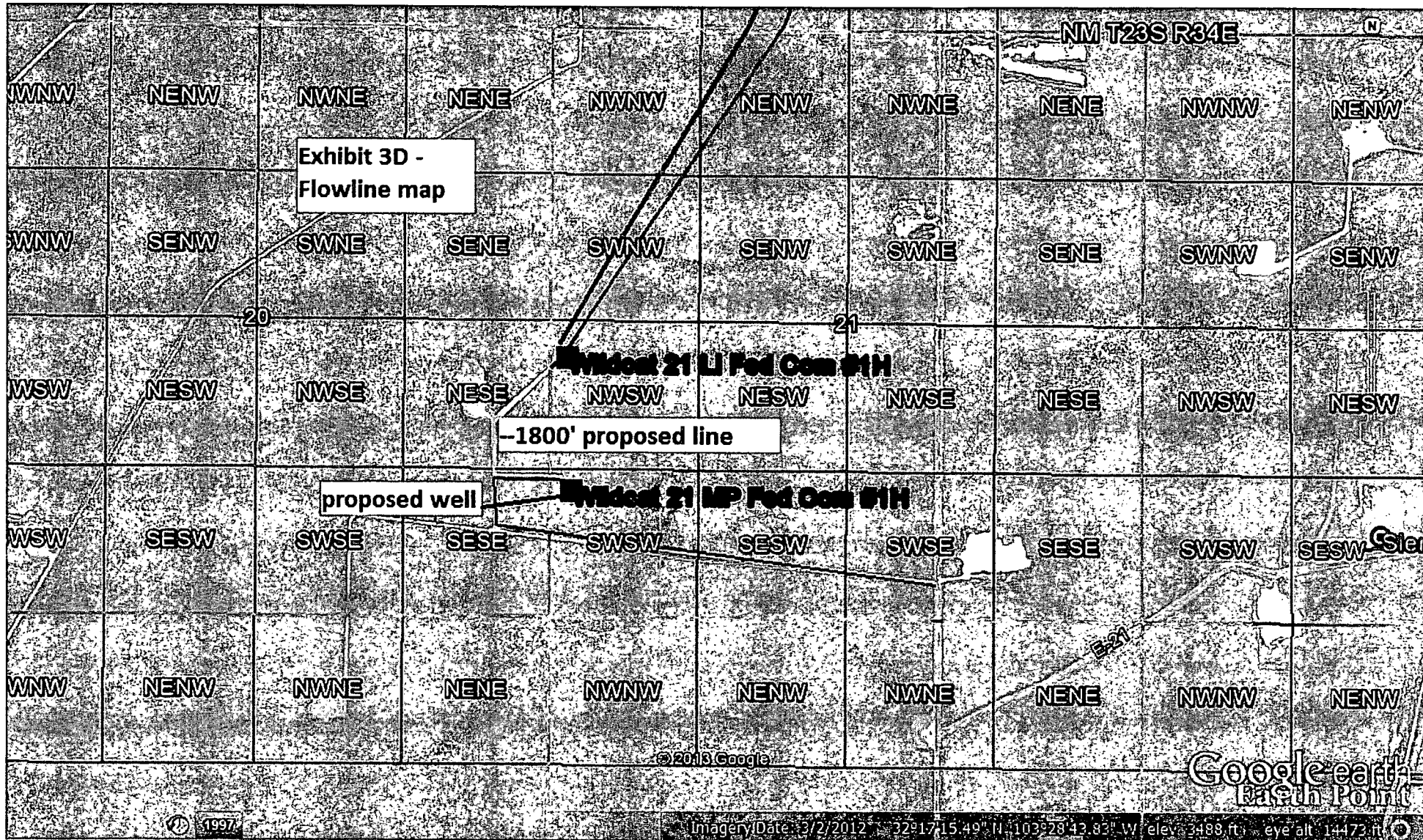


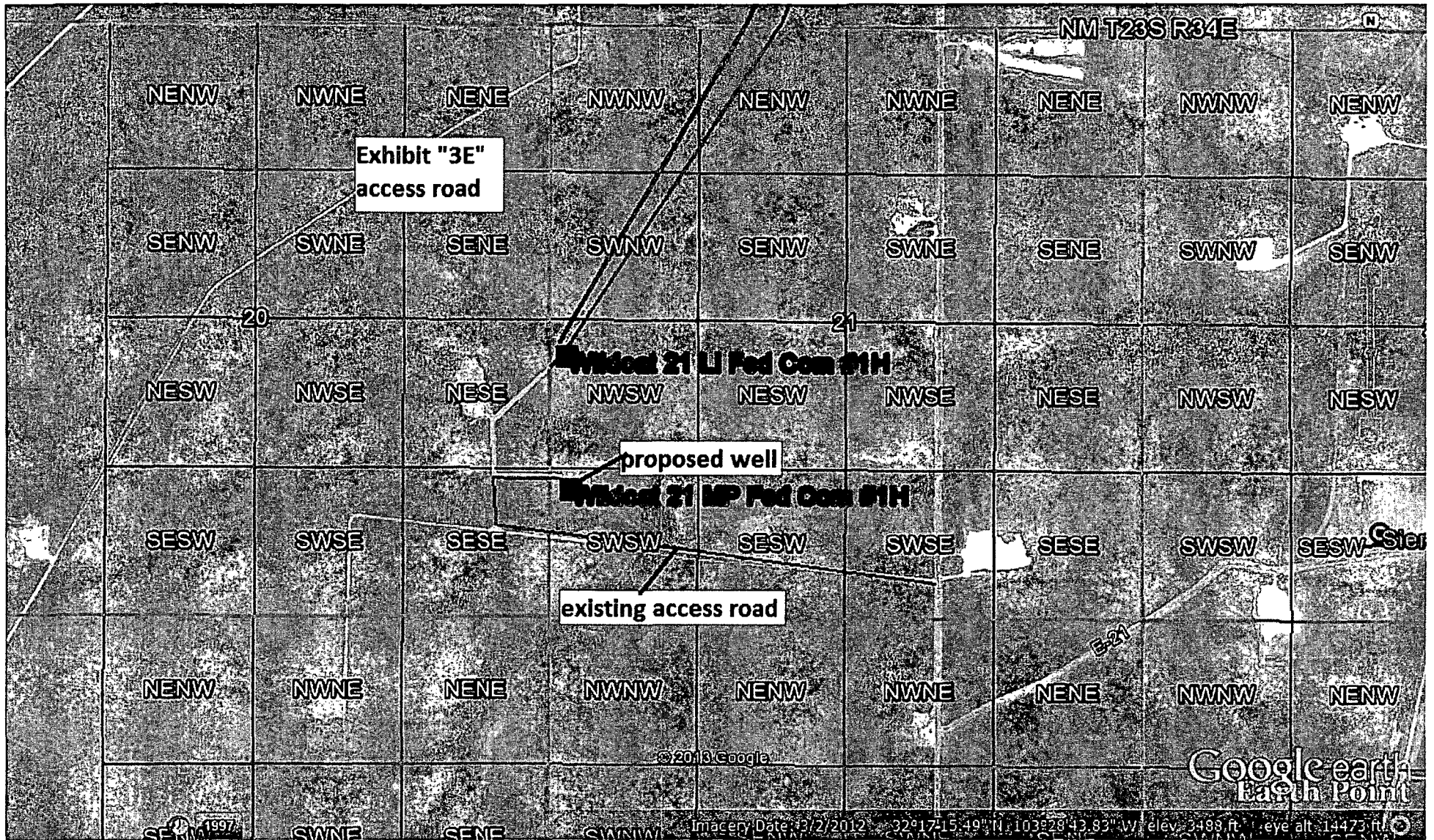
WEST TEXAS CONSULTANTS, INC.
ENGINEERS PLANNERS SURVEYORS
405 S.W. 1st STREET
ANDREWS, TEXAS 79714
(432) 523-2181

MEWBOURNE OIL COMPANY

JOB No.: WTC48915

Z:\Projects\Oil & Gas Survey\Meawbourne Oil Company\WAB15-Meawbourne Oil Company, State & Plat 2 Wildcat well, Eddy Co, New Mexico\WAB15 - WILDCAT 21 MP FED COM-1H.dwg





- Drilling (Well Start)
- × Abandoned Location (Permit)
- ✱ Gas Well
- Oil Well
- ✱ Oil and Gas Well
- Other (Observation, etc)
- ✱ Injection Well
- Suspended
- ✱ Plugged Gas Well
- ✱ Plugged Oil Well
- ✱ Plugged Oil and Gas
- Dry Hole (No Shows)
- ✱ Dry Hole w/Gas Show
- Dry Hole w/Oil Show
- ✱ Dry Hole w/Oil and Gas Show

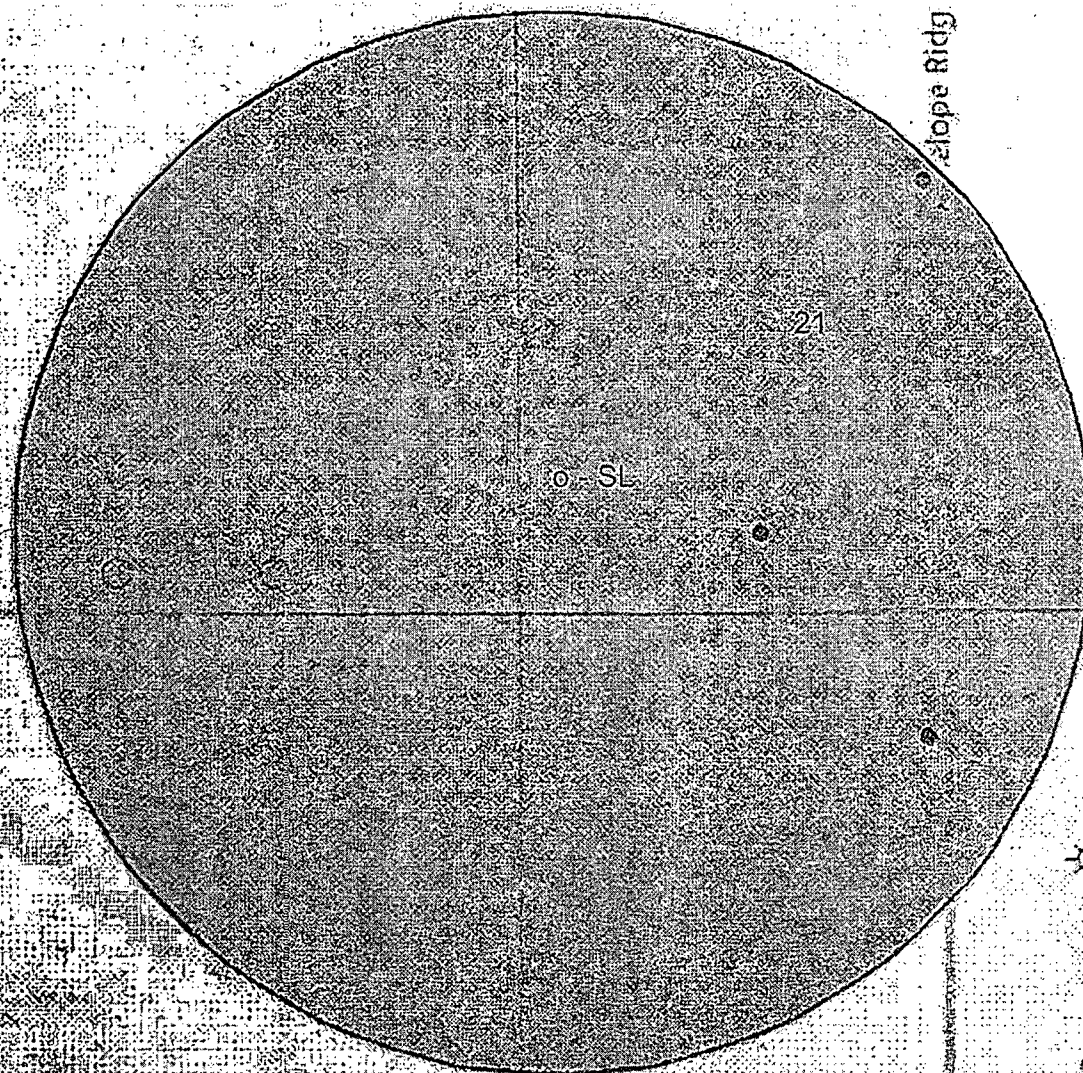


EXHIBIT "4" - SL - Wildcat 21 MP Fed Com #1H - 1160' FSL & 150' FWL, Sec. 21-T23S R34E, Lea County, NM

- Drilling (Well Start)
- × Abandoned Location (Permit)
- ✱ Gas Well
- Oil Well
- ✱ Oil and Gas Well
- Other (Observation, etc)
- ✱ Injection Well
- Suspended
- ✱ Plugged Gas Well
- ✱ Plugged Oil Well
- ✱ Plugged Oil and Gas
- ✱ Dry Hole (No Shows)
- ✱ Dry Hole w/Gas Show
- ✱ Dry Hole w/Oil Show
- ✱ Dry Hole w/Oil and Gas Show

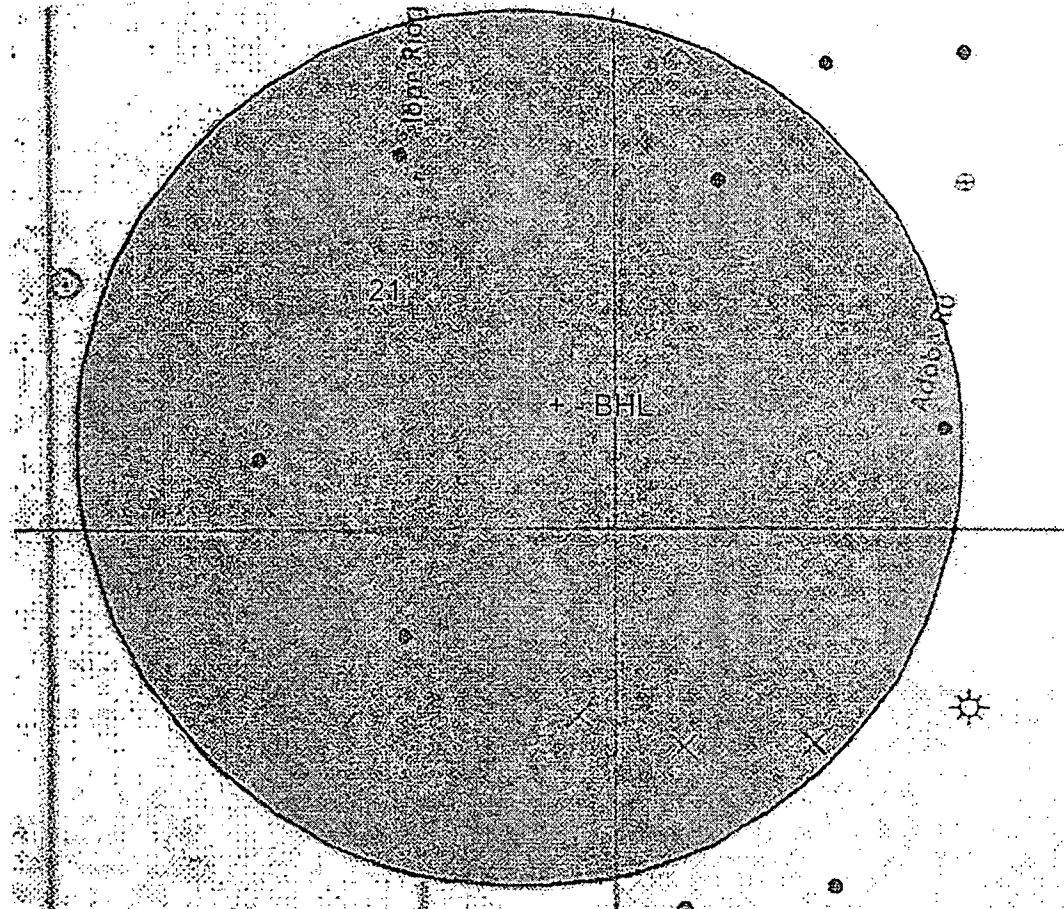


EXHIBIT "4A" - BHL - Wildcat 21 MP Fed Com #1H - 330' FSL & 330' FEL, Sec. 21 T23S R34E, Lea County, NM