

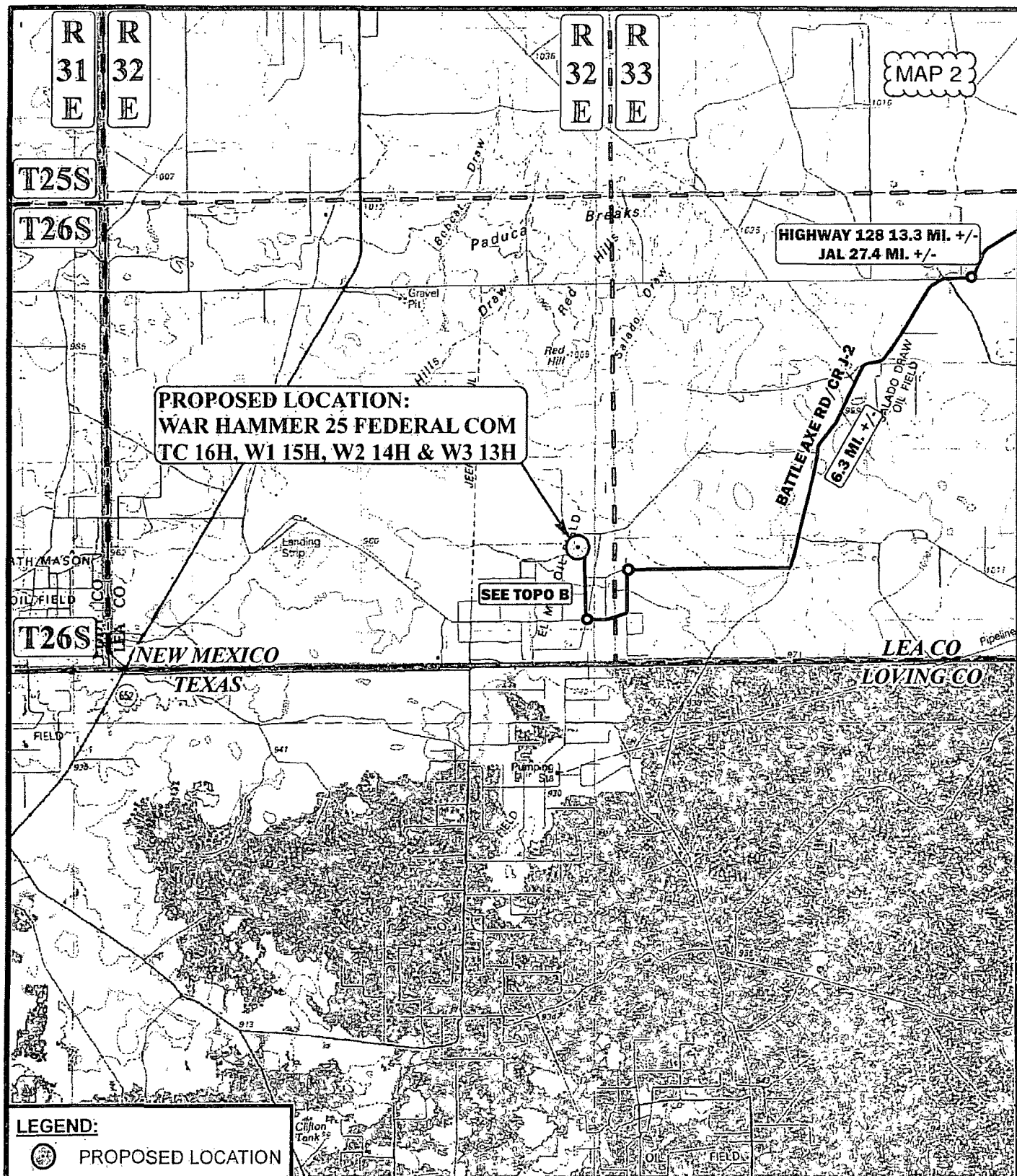
MAY 13 2015

104.13333° W 104.01667° W 103.90000° W 103.78333° W 103.66667° W 103.55000° W 103.43333° W 103.31667° W 103.20000° W WGS84 103.00000° W

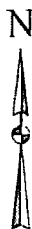


7°

06/29/14



Corporate Office * 85 South 200 East
Vernal, UT 84078 * (435) 789-1017



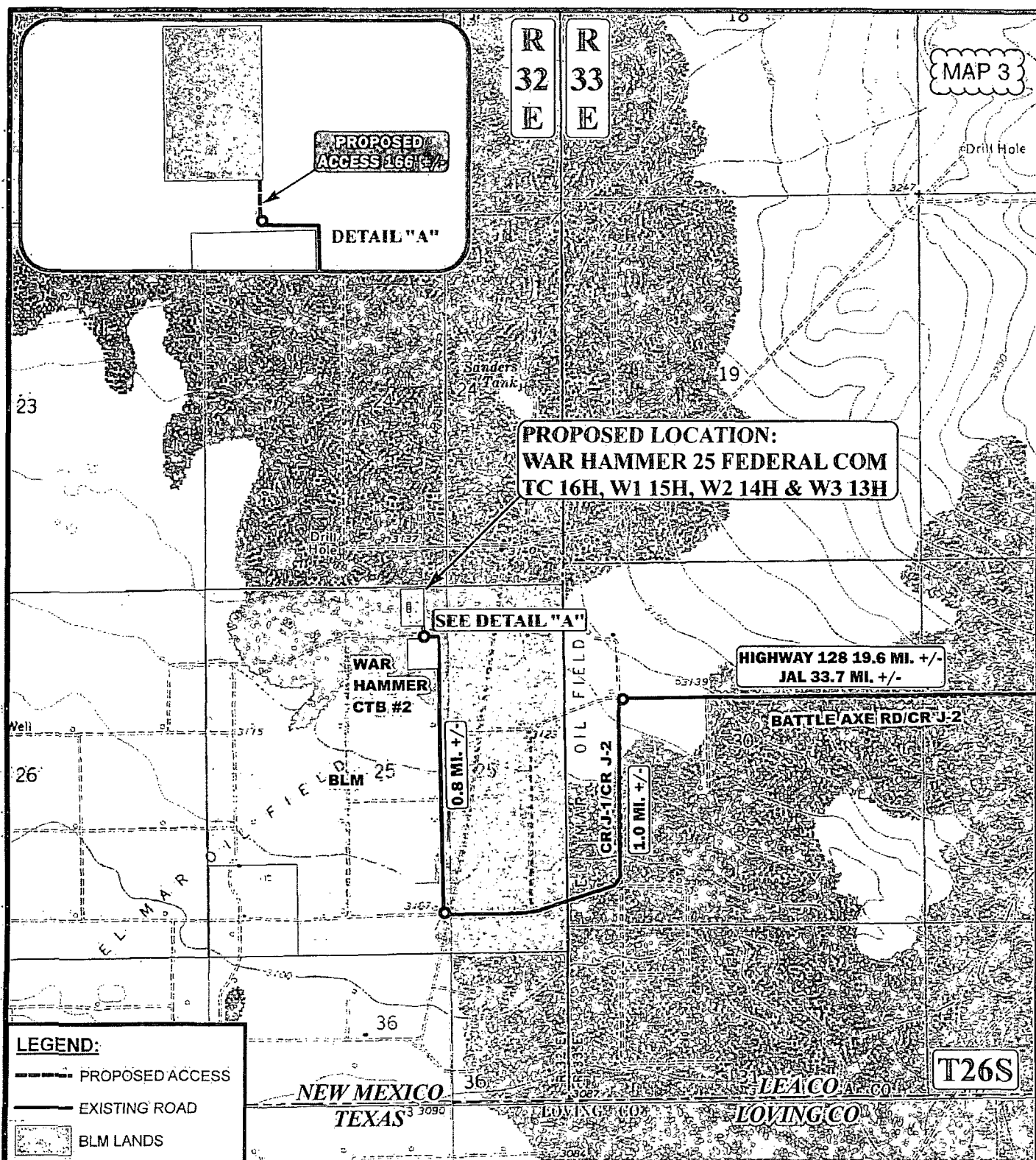
ConocoPhillips

ConocoPhillips Company

WAR HAMMER 25 FEDERAL COM
TC 16H, W1 15H, W2 14H & W3 13H
SECTION 25, T26S, R32E, N.M.P.M.
NW 1/4 NE 1/4

ACCESS ROAD MAP

TOPO A



*PARCEL DATA SHOWN HAS BEEN OBTAINED FROM VARIOUS SOURCES AND SHOULD BE USED FOR MAPPING, GRAPHIC AND PLANNING PURPOSES ONLY. NO WARRANTY IS MADE BY UINAH ENGINEERING & LAND SURVEYING (UELS) FOR ACCURACY OF THE PARCEL DATA.

SCALE: 1" = 2000' REVISION: 00-00-00
 DRAWN BY: L.S.
 DATE DRAWN: 01-08-14



ConocoPhillips

ConocoPhillips Company

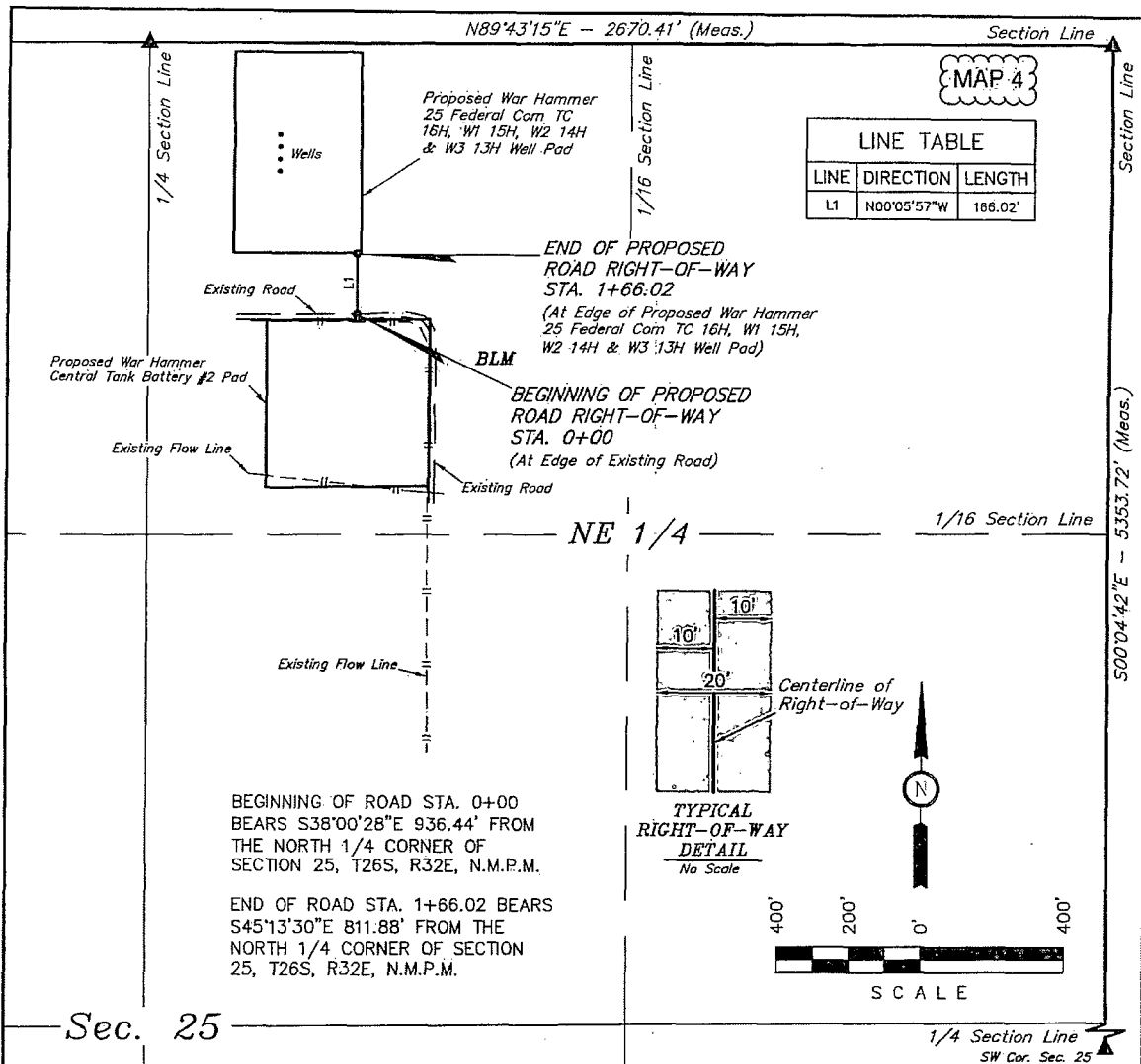
WAR HAMMER 25 FEDERAL COM
 TC 16H, W1 15H, W2 14H & W3 13H
 SECTION 25, T26S, R32E, N.M.P.M.
 NW 1/4 NE 1/4

ACCESS ROAD MAP

TOPO B



Corporate Office * 85 South 200 East
 Vernal, UT 84078 * (435) 789-1017



ROAD RIGHT-OF-WAY DESCRIPTION

A 20' WIDE RIGHT-OF-WAY 10' ON EACH SIDE OF THE FOLLOWING DESCRIBED CENTERLINE.

BEGINNING AT A POINT IN THE NW 1/4 NE 1/4 OF SECTION 25, T26S, R32E, N.M.P.M., WHICH BEARS S38°00'28"E 936.44' FROM THE NORTH 1/4 CORNER OF SAID SECTION 25, THENCE N00°05'57"W 166.02' TO A POINT IN THE NW 1/4 NE 1/4 OF SAID SECTION 25, WHICH BEARS S45°13'30"E 811.88' FROM THE NORTH 1/4 CORNER OF SAID SECTION 25. THE SIDE LINES OF SAID DESCRIBED RIGHT-OF-WAY BEING SHORTENED OR ELONGATED TO MEET THE GRANTOR'S PROPERTY LINES. BASIS OF BEARINGS IS A G.P.S. OBSERVATION. CONTAINS 0.076 ACRES MORE OR LESS.

RIGHT-OF-WAY LENGTHS

DESCRIPTION	FEET	ACRES	RODS
TOTAL	166.02	0.076	10.06

▲ = SECTION CORNERS LOCATED.

NOTES:

- The maximum grade of existing ground for the proposed access road is $\pm 0.5\%$.

CERTIFICATE OF PROFESSIONAL SURVEY
THIS IS TO CERTIFY THAT THE ABOVE MAP WAS PREPARED FROM
FIELD NOTES OF ACTUAL SURVEY MADE BY ME OR UNDER MY
SUPERVISION AND THAT THE SAME ARE TRUE AND CORRECT TO THE
BEST OF MY KNOWLEDGE AND BELIEF.

REGISTERED LAND SURVEYOR
REGISTRATION NO. 12446
STATE OF NEW MEXICO 03-03-14

ConocoPhillips

ConocoPhillips Company

WAR HAMMER 25 FEDERAL COM
TC 16H, W1 15H, W2 14H & W3 13H
SECTION 25, T26S, R32E, N.M.P.M.
NW 1/4 NE 1/4

DRAWN BY: S.F.

SCALE: 1" = 400'

DATE: 02-24-14

REVISED:

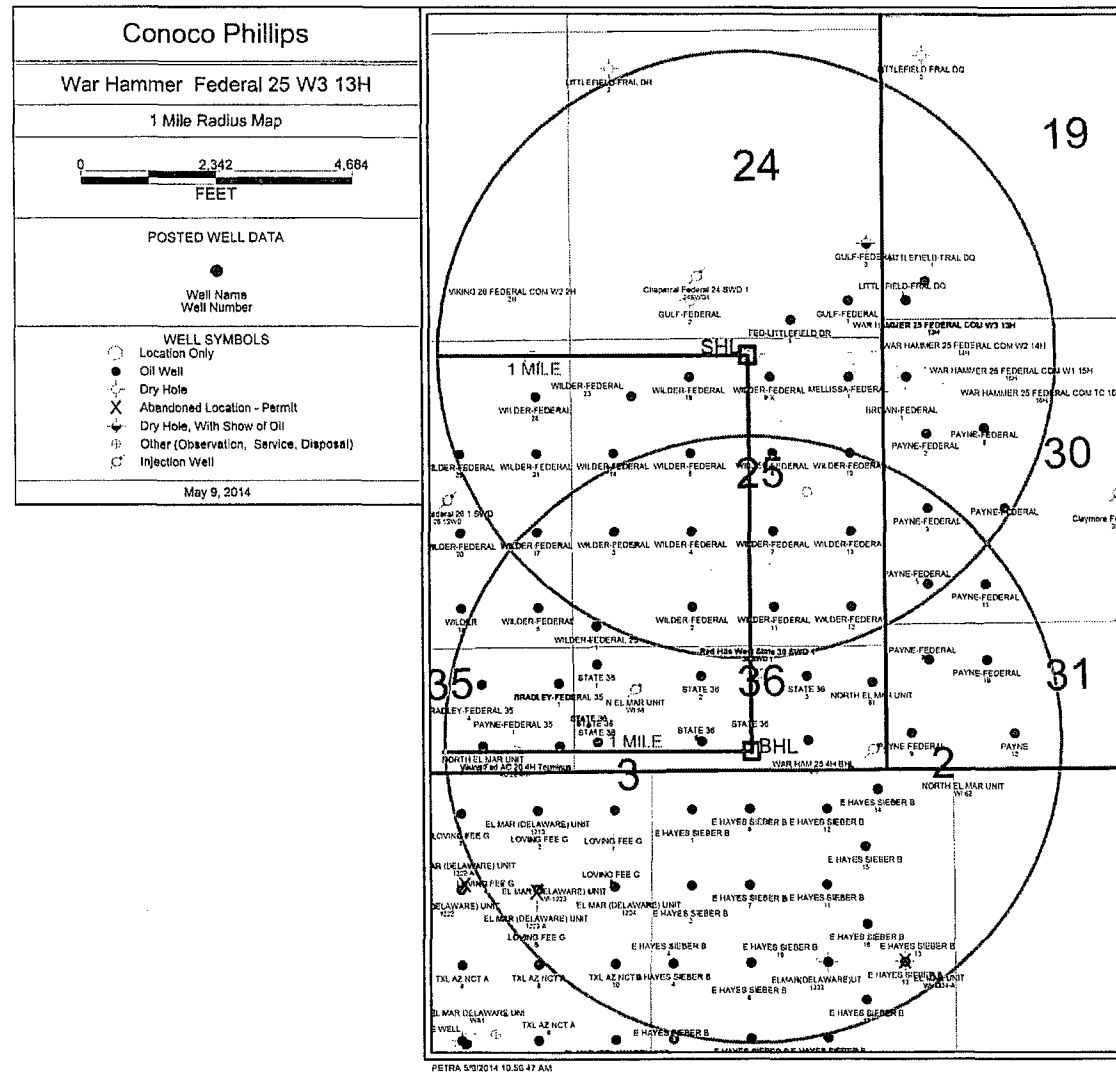
ACCESS ROAD R-O-W

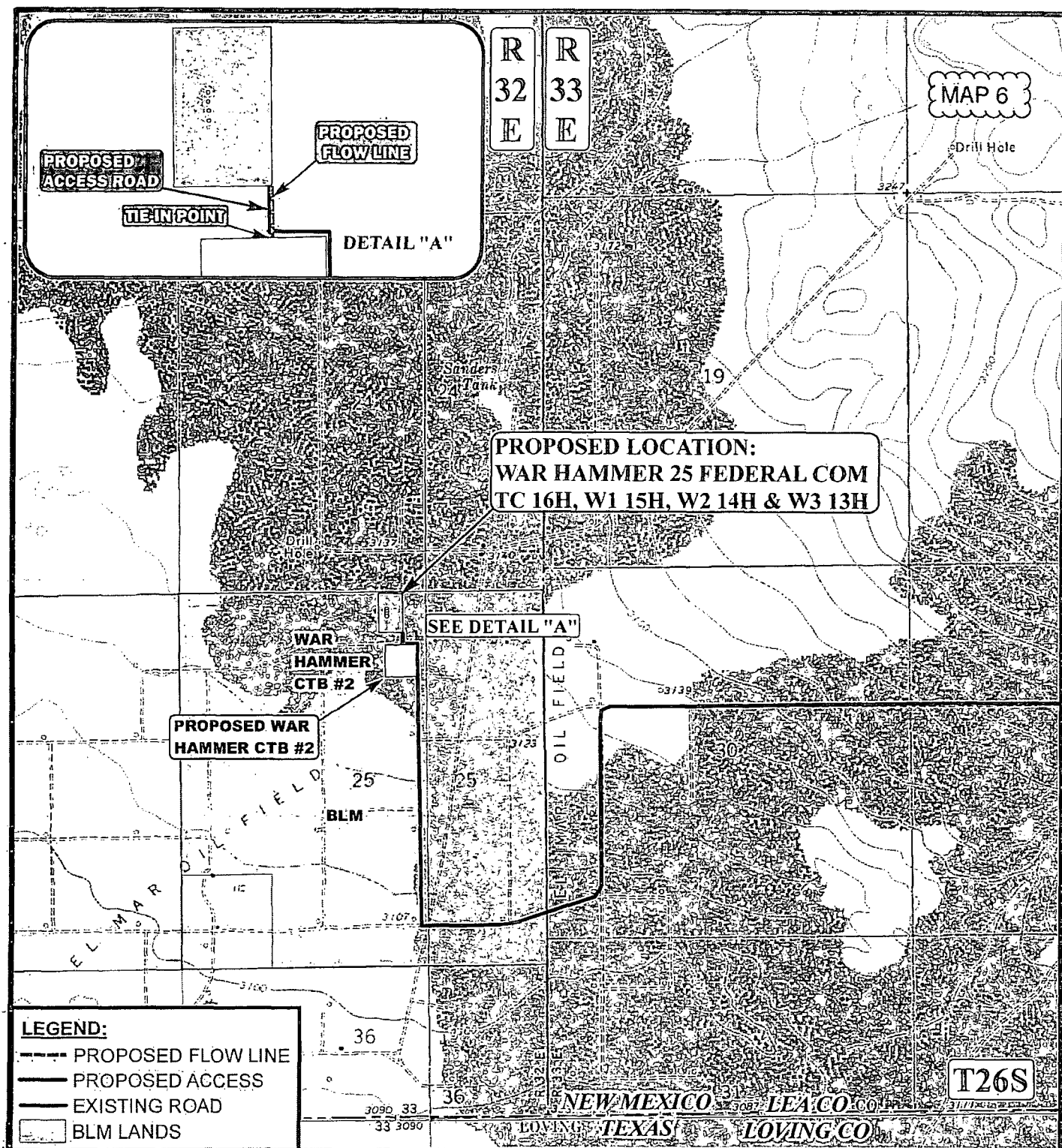
FIGURE #6



Corporate Office * 85 South 200 East
Vernal, UT 84078 * (435) 789-1017

MAP 5





APPROXIMATE TOTAL FLOW LINE DISTANCE = 182' +/-

*PARCEL DATA SHOWN HAS BEEN OBTAINED FROM VARIOUS SOURCES AND SHOULD BE USED FOR MAPPING, GRAPHIC AND PLANNING PURPOSES ONLY. NO WARRANTY IS MADE BY UINTEH ENGINEERING & LAND SURVEYING (UELS) FOR ACCURACY OF THE PARCEL DATA.

SCALE: 1" = 2000'
DRAWN BY: L.S.
DATE DRAWN: 01-08-14

REVISION: 00-00-00



ConocoPhillips

ConocoPhillips Company

WAR HAMMER 25 FEDERAL COM
TC 16H, W1 15H, W2 14H & W3 13H
SECTION 25, T26S, R32E, N.M.P.M.
NW 1/4 NE 1/4

FLOW LINE MAP

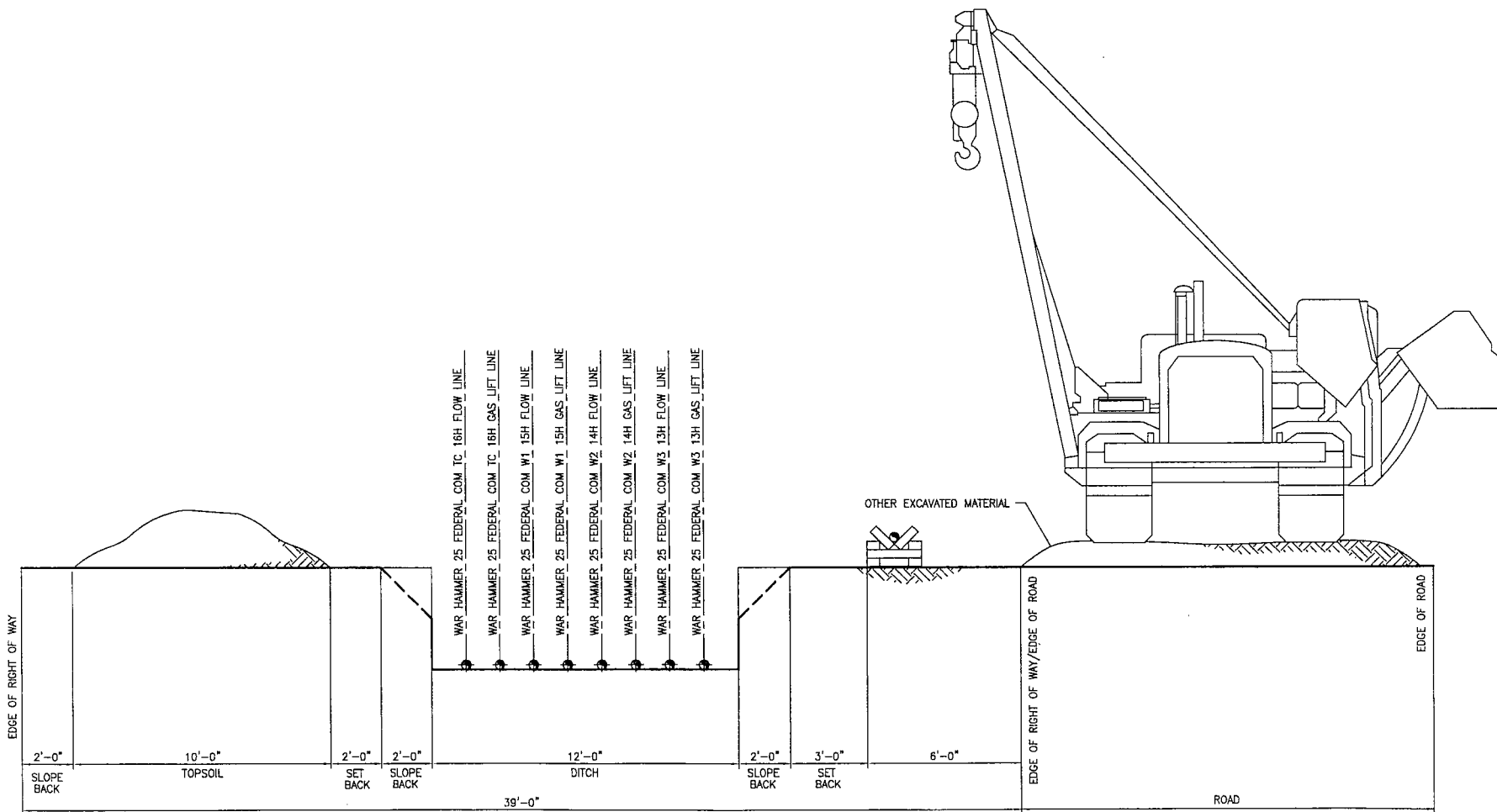
TOPO D




Corporate Office * 85 South 200 East
Vernal, UT 84078 * (435) 789-1017

FLOW LINE RIGHT OF WAY

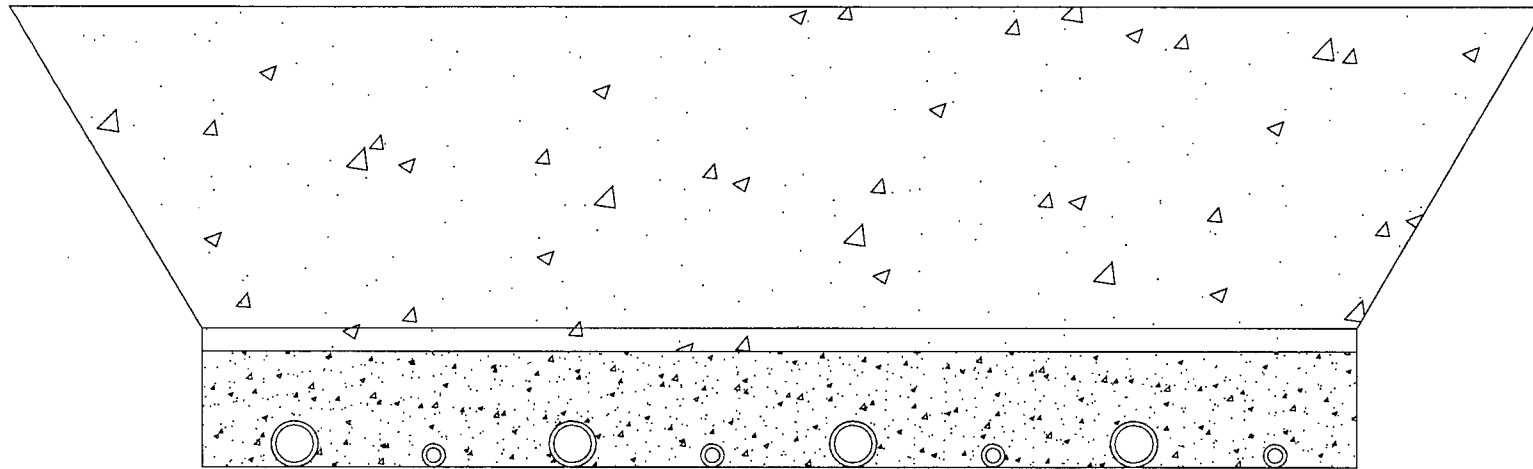
WAR HAMMER 25 FEDERAL COM W3 13H, WAR HAMMER 25 FEDERAL COM W2 14H, WAR HAMMER 25 FEDERAL COM W1 15H, WAR HAMMER 25 FEDERAL COM TC 16H



REFERENCE DWG NO:										DRAWN: TTM		DESIGN: RAR		 PRMU FLOW LINE R-0-W WAR HAMMER 25 FEDERAL COM W3 13H, W2 14H, W1 15H, TC 16H											
										CHECKED: RAR		APPROVAL:						CC NO:							
A 05/13/14 ISSUE FOR APPROVAL										SCALE: NA		DATE: 05/13/14		CAD FILENAME:		JOB NO: -		SUB JOB NO: -		DRAWING NO: WAR HAMMER COM W3 13H_W2 14H_W1 15H_TC 16H		SHEET: 1 OF 1		REV: A	
REV		DATE		REVISION		BY		CHK		APP		APP													

BACKFILL AROUND PIPE

**WAR HAMMER 25 FEDERAL COM W3 13H, WAR HAMMER 25 FEDERAL COM
W2 14H, WAR HAMMER 25 FEDERAL COM W1 15H, WAR HAMMER 25
FEDERAL COM TC 16H**



BACKFILL DIRT TO BE AS FREE OF ROCKS AND LARGE PARTICLES AS POSSIBLE

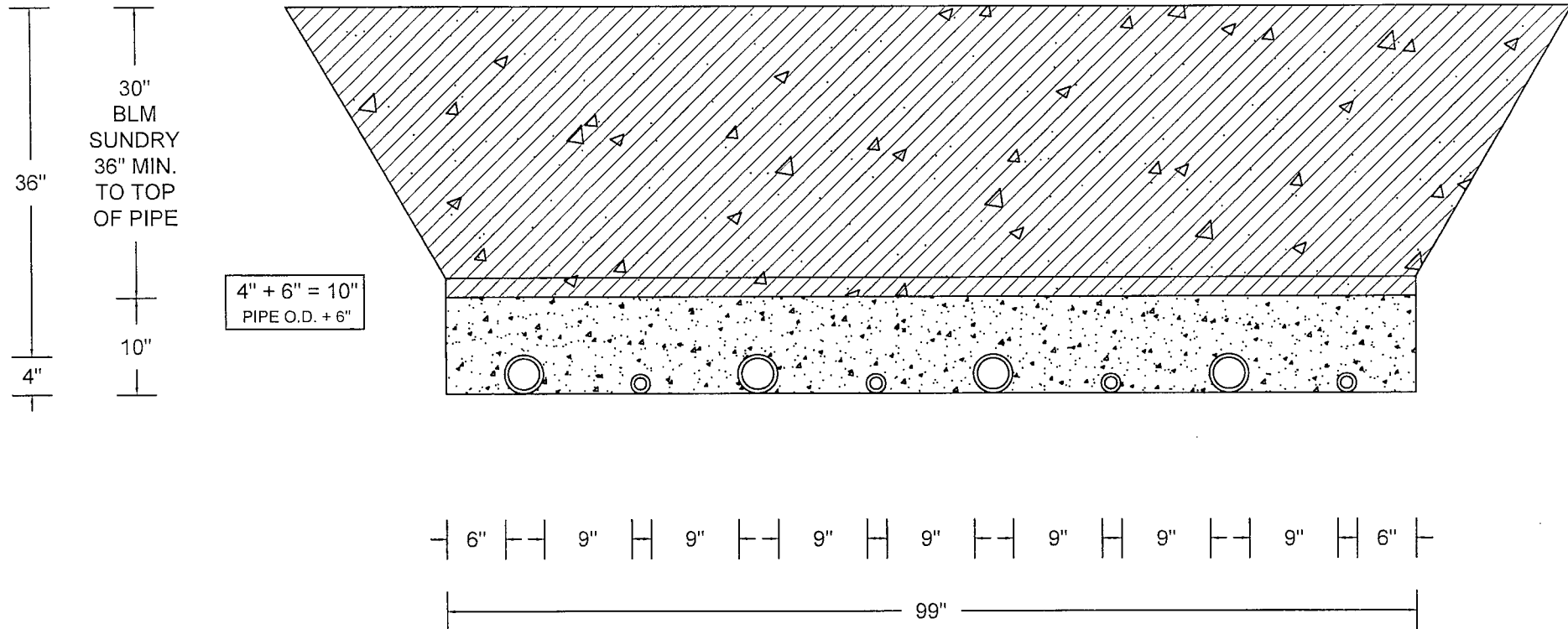
FLOW LINE WILL BE 4" COATED STEEL PIPE w/ AN OPERATING PRESSURE UP TO 1480# PSI.

GAS SUPPLY LINE WILL BE 2" STEEL PIPE w/ AN OPERATING PRESSURE UP TO 1100# PSI.

SOFT FILL DIRT OR SAND WITH NO ROCKS OR SOLID PARTICLES GREATER THAN 1" IN CIRCUMFERENCE

BACKFILL AROUND PIPE

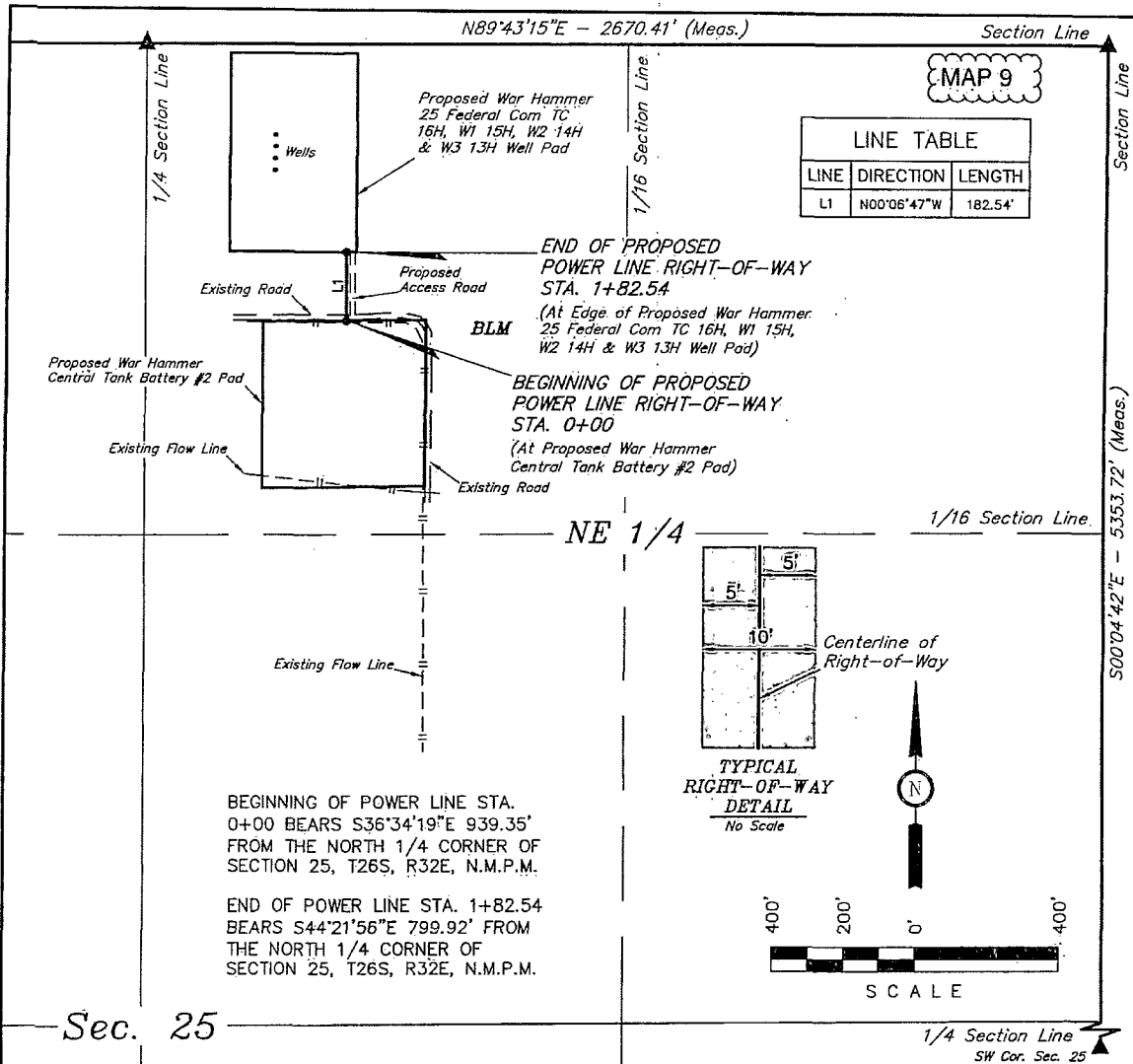
WAR HAMMER 25 FEDERAL COM W3 13H, WAR HAMMER 25 FEDERAL COM
W2 14H, WAR HAMMER 25 FEDERAL COM W1 15H, WAR HAMMER 25
FEDERAL COM TC 16H



ALTERNATING 4" PIPE (FLOW LINE) +
2" PIPE (GAS LIFT)

6" CLEARANCE AT BOTH ENDS

9" CLEARANCE BETWEEN EACH PIPE



POWER LINE RIGHT-OF-WAY DESCRIPTION

A 10' WIDE RIGHT-OF-WAY 5' ON EACH SIDE OF THE FOLLOWING DESCRIBED CENTERLINE.

BEGINNING AT A POINT IN THE NW 1/4 NE 1/4 OF SECTION 25, T26S, R32E, N.M.P.M., WHICH BEARS S36°34'19"E 939.35' FROM THE NORTH 1/4 CORNER OF SAID SECTION 25, THENCE N00°06'47"W 182.54' TO A POINT IN THE NW 1/4 NE 1/4 OF SAID SECTION 25, WHICH BEARS S44°21'56"E 799.92' FROM THE NORTH 1/4 CORNER OF SAID SECTION 25. THE SIDE LINES OF SAID DESCRIBED RIGHT-OF-WAY BEING SHORTENED OR ELONGATED TO MEET THE GRANTOR'S PROPERTY LINES. BASIS OF BEARINGS IS A G.P.S. OBSERVATION, CONTAINS 0.042 ACRES MORE OR LESS.

RIGHT-OF-WAY LENGTHS			
DESCRIPTION	FEET	ACRES	RODS
TOTAL	182.54	0.042	11.06

▲ = SECTION CORNERS LOCATED.

CERTIFICATE OF PROFESSIONAL SURVEY
THIS IS TO CERTIFY THAT THE ABOVE PLAT WAS PREPARED FROM
FIELD NOTES OF ACTUAL SURVEYS MADE BY ME OR UNDER MY
SUPERVISION AND THAT THE SAME ARE TRUE AND CORRECT TO THE
BEST OF MY KNOWLEDGE AND BELIEF.

12446
Nelson J. Marshall
REGISTERED LAND SURVEYOR
REGISTRATION NO. 12446
STATE OF NEW MEXICO
03-03-14

NOTES:

ConocoPhillips

ConocoPhillips Company

WAR HAMMER 25 FEDERAL COM.
TC 16H, W1 15H, W2 14H & W3 13H
SECTION 25, T26S, R32E, N.M.P.M.
NW 1/4 NE 1/4

DRAWN BY: S.F. SCALE: 1" = 400'
DATE: 02/24/14 REVISED:



Corporate Office * 85 South 200 East
Vernal, UT 84078 * (435) 789-1017

POWER LINE R-O-W

FIGURE #8

War Hammer 25 Federal Com
W3 13H, W2 14H, W1 15H, TC 16H

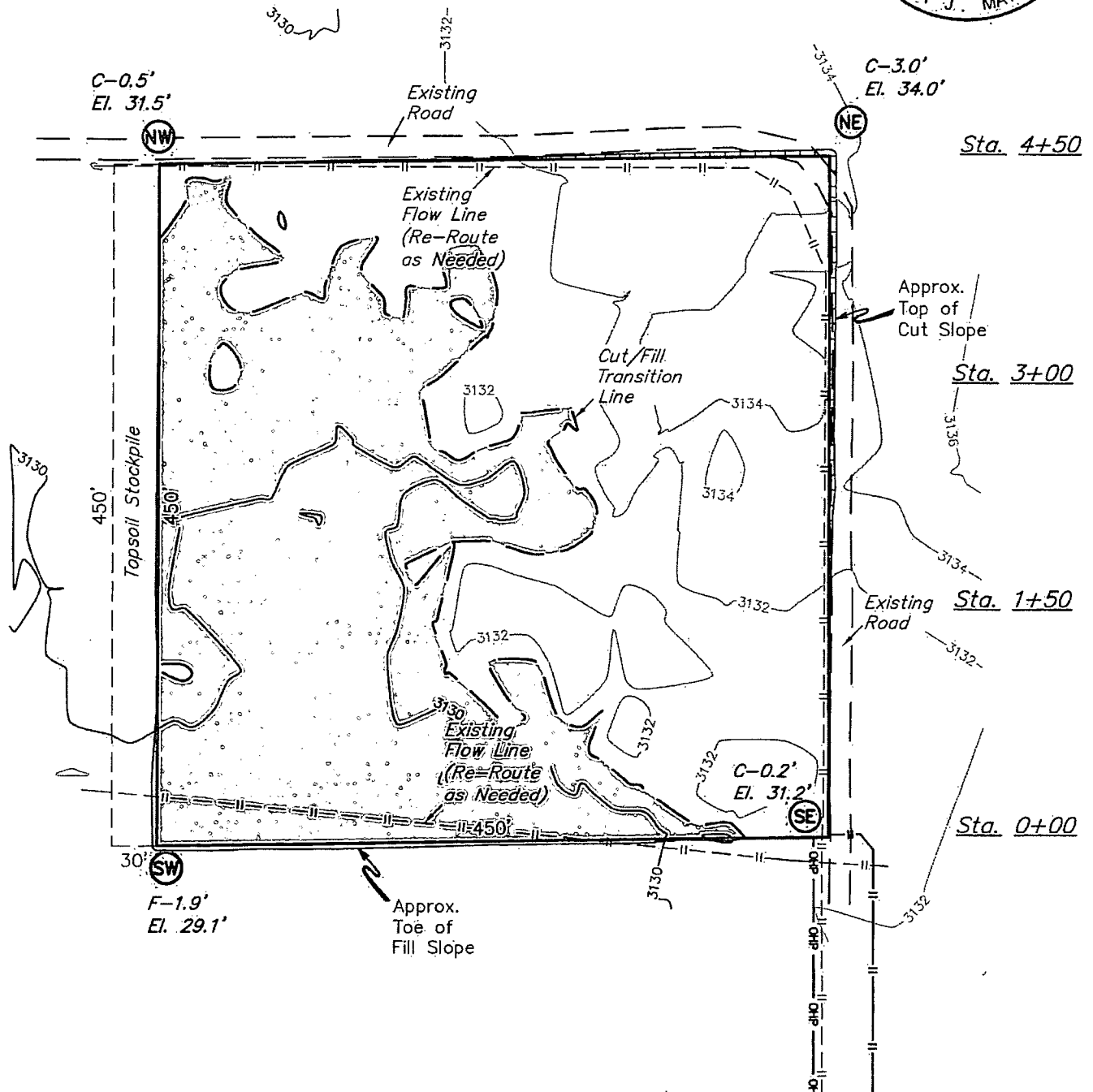
166.02' proposed road
182.18' proposed pipelines
182.54' proposed power line

Central Tank
Battery 2

proposed
power line
1,106.67'



MAP 12



ELEV. UNGRADED GROUND AT SW STAKE = 3129.1' FINISHED GRADE ELEV. AT SW STAKE = 3131.0'

NOTES:

- Underground utilities shown on this sheet are for visualization purposes only, actual locations to be determined prior to construction.

ConocoPhillips

ConocoPhillips Company

WAR HAMMER CENTRAL TANK BATTERY #2
SECTION 25, T26S, R32E, N.M.P.M.
NW 1/4 NE 1/4

DRAWN BY: C.A.G.

SCALE: 1" = 100'

DATE: 02-20-14

REVISED:

LOCATION LAYOUT

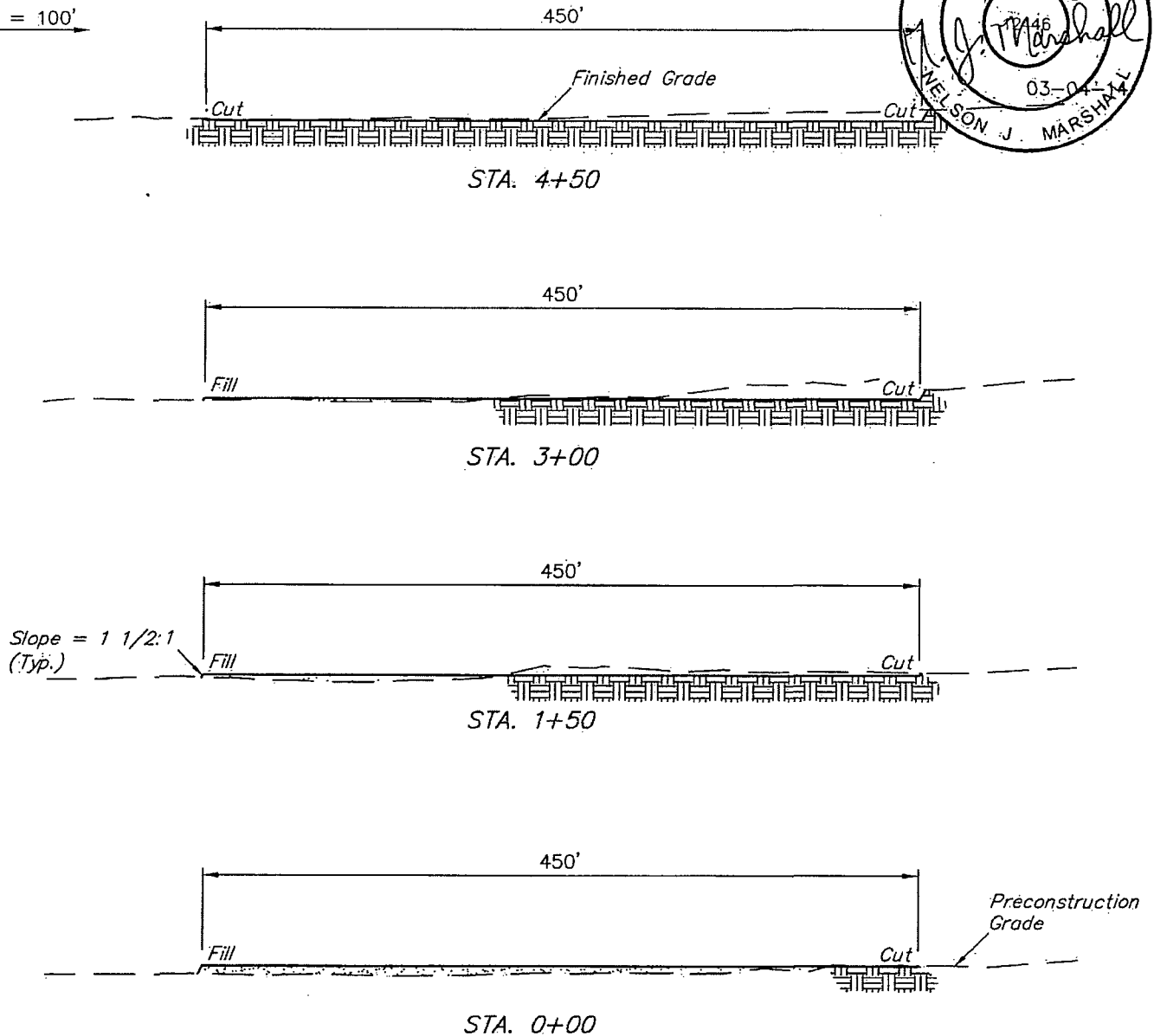
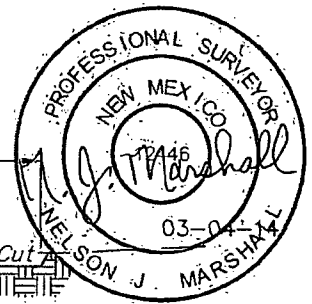
FIGURE #1



Corporate Office * 85 South 200 East
Vernal, UT 84078 * (435) 789-1017

1" = 40'
X-Section
Scale
1" = 100'

MAP 13



APPROXIMATE EARTHWORK QUANTITIES		APPROXIMATE SURFACE DISTURBANCE AREAS		
(3") TOPSOIL STRIPPING	1,910 Cu. Yds.		DISTANCE	ACRES
REMAINING LOCATION	4,700 Cu. Yds.	WELL SITE DISTURBANCE	NA	±4.731
TOTAL CUT	6,610 Cu. Yds.	PIPELINE DISTURBANCE	±1118.27'	±0.257
FILL	4,700 Cu. Yds.	POWER LINE DISTURBANCE	±1106.67'	±0.254
EXCESS MATERIAL	1,910 Cu. Yds.			
TOPSOIL	1,910 Cu. Yds.	TOTAL DISTURBANCE	±2224.94'	±5.242
EXCESS UNBALANCE (After Interim Rehabilitation)	0 Cu. Yds.			

NOTES:

- Fill quantity includes 5% for compaction.

ConocoPhillips

ConocoPhillips Company

WAR HAMMER CENTRAL TANK BATTERY #2
SECTION 25, T26S, R32E, N.M.P.M.
NW 1/4 NE 1/4

DRAWN BY: C.A.G.

SCALE: AS SHOWN

DATE: 02-20-14

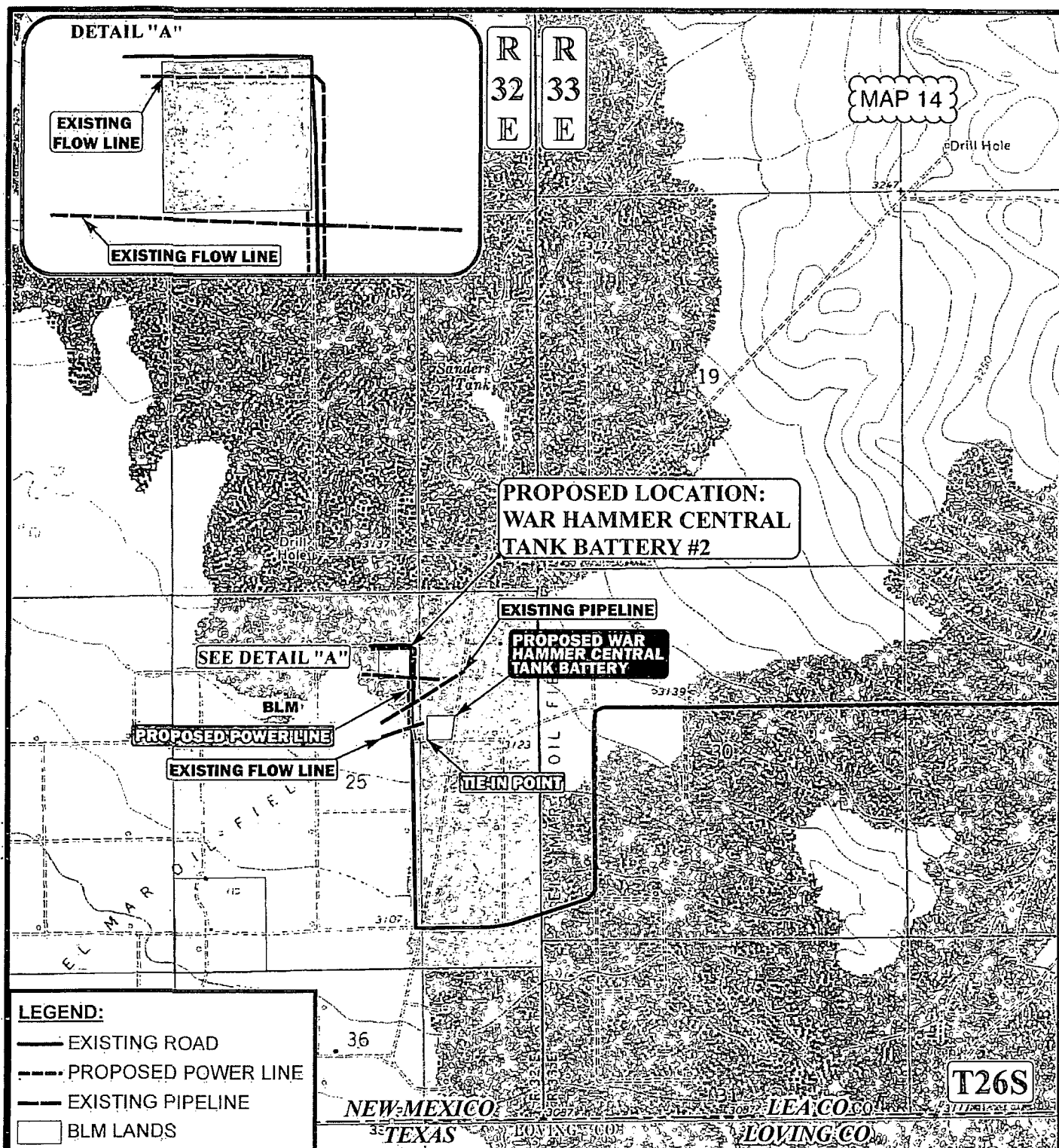
REVISED:

TYPICAL CROSS SECTIONS

FIGURE #2



Corporate Office * 85 South 200 East
Vernal, UT 84078 * (435) 789-1017



APPROXIMATE TOTAL POWER LINE DISTANCE = 1,107' +/-

*PARCEL DATA SHOWN HAS BEEN OBTAINED FROM VARIOUS SOURCES AND SHOULD BE USED FOR MAPPING, GRAPHIC AND PLANNING PURPOSES ONLY. NO WARRANTY IS MADE BY UINTAH ENGINEERING & LAND SURVEYING (UELS) FOR ACCURACY OF THE PARCEL DATA.

SCALE: 1" = 2000'

REVISED: 00-00-00

DRAWN BY: L.S.

DATE DRAWN: 02-24-14

N

ConocoPhillips

ConocoPhillips Company

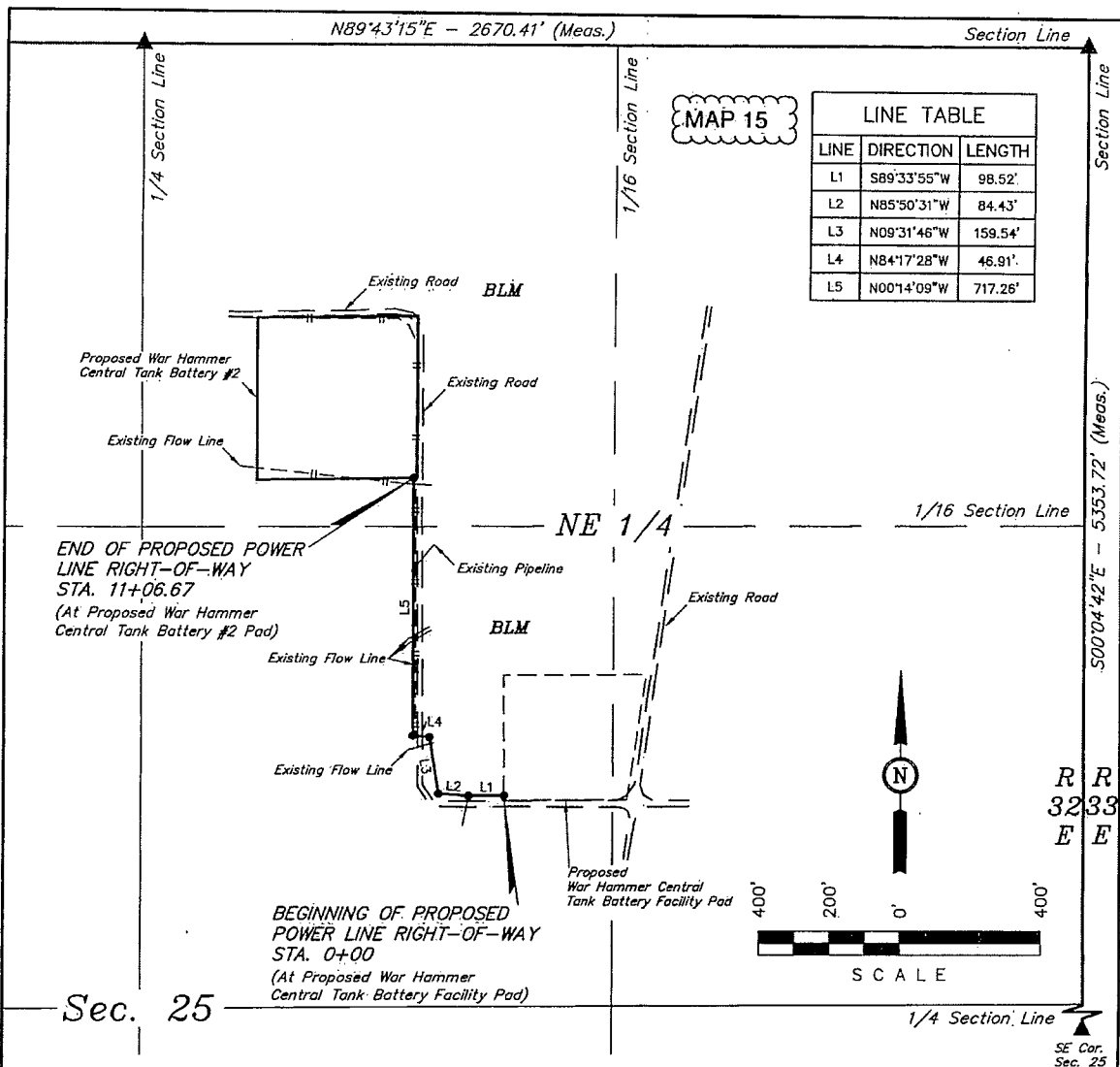
WAR HAMMER CENTRAL TANK BATTERY #2
SECTION 25, T26S, R32E, N.M.P.M.
NW 1/4 NE 1/4



Corporate Office * 85 South 200 East
Vernal, UT 84078 * (435) 789-1017

POWER LINE MAP

TOPO E



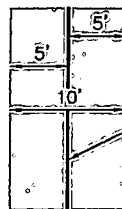
POWER LINE RIGHT-OF-WAY DESCRIPTION

A 10' WIDE RIGHT-OF-WAY 5' ON EACH SIDE OF THE FOLLOWING DESCRIBED CENTERLINE.

BEGINNING AT A POINT IN THE SW 1/4 NE 1/4 OF SECTION 25, T26S, R32E, N.M.P.M., WHICH BEARS S26°16'00"E 2325.98' FROM THE NORTH 1/4 CORNER OF SAID SECTION 25, THENCE S89°33'55"W 98.52'; THENCE N85°50'31"W 84.43'; THENCE N09°31'46"W 159.54'; THENCE N84°17'28"W 46.91'; THENCE N00°14'09"W 717.26' TO A POINT IN THE NW 1/4 NE 1/4 OF SAID SECTION 25, WHICH BEARS S32°40'53"E 1427.10' FROM THE NORTH 1/4 CORNER OF SAID SECTION 25. THE SIDE LINES OF SAID DESCRIBED RIGHT-OF-WAY BEING SHORTENED OR ELONGATED TO MEET THE GRANTOR'S PROPERTY LINES. BASIS OF BEARINGS IS A G.P.S. OBSERVATION. CONTAINS 0.254 ACRES MORE OR LESS.

BEGINNING OF POWER LINE STA. 0+00 BEARS S26°16'00"E 2325.98' FROM THE NORTH 1/4 CORNER OF SECTION 25, T26S, R32E, N.M.P.M.

END OF POWER LINE STA. 11+06.67 BEARS S32°40'53"E 1427.10' FROM THE NORTH 1/4 CORNER OF SECTION 25, T26S, R32E, N.M.P.M.



TYPICAL
RIGHT-OF-WAY
DETAIL
No Scale.

RIGHT-OF-WAY LENGTHS

DESCRIPTION	FEET	ACRES	RODS
BLM NE 1/4	1106.67	0.254	67.07

▲ = SECTION CORNERS LOCATED.

THIS IS TO CERTIFY THAT THE ABOVE PLAT WAS PREPARED FROM FIELD NOTES OF ACTUAL SURVEY MADE BY ME OR UNDER MY SUPERVISION AND THAT THE SAME ARE TRUE AND CORRECT TO THE BEST OF MY KNOWLEDGE AND BELIEF.

CERTIFICATE OF PROFESSIONAL SURVEYOR
12446-1
Nelson J. Marshall
REGISTERED LAND SURVEYOR
REGISTRATION NO. 12446
STATE OF NEW MEXICO 03-04-14

NOTES:



Corporate Office * 85 South 200 East
Vernal, UT 84078 * (435) 789-1017

ConocoPhillips

ConocoPhillips Company

WAR HAMMER CENTRAL TANK BATTERY #2
SECTION 25, T26S, R32E, N.M.P.M.
NW 1/4 NE 1/4

DRAWN BY: C.A.G.

SCALE: 1" = 400'

DATE: 02-20-14

REVISED:

POWER LINE R-O-W

103.70000° W 103.68333° W 103.66667° W 103.65000° W WGS84 103.63333° W

MAP 16

T26S, R32E

Buck pond

Wilder pond

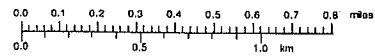
temporary surface fresh water line

War Hammer 25 Federal Com 13H - 16H

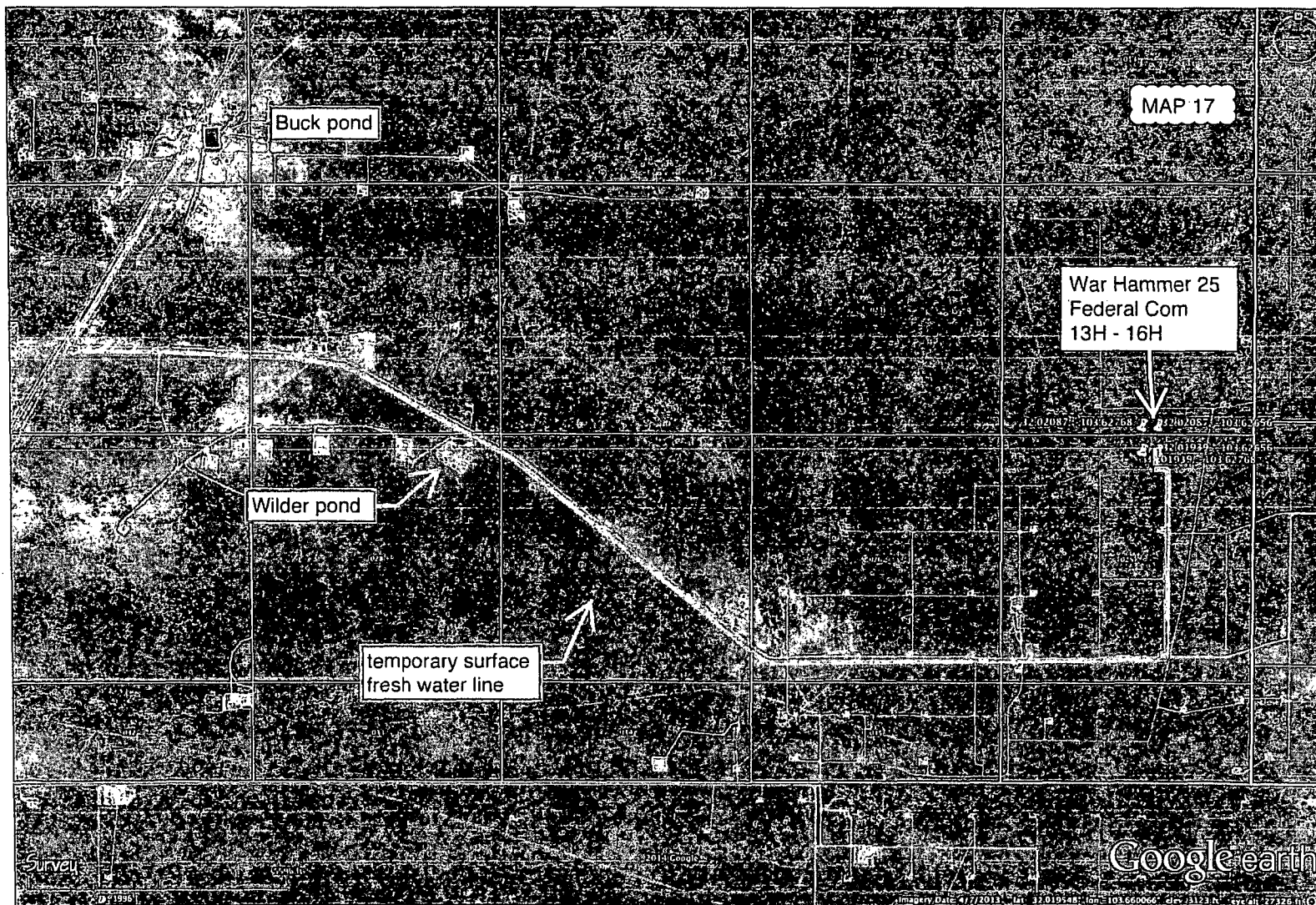
32.03333° N 32.01667° N

Map created with TIGER National Geographic © 2005 Tele Atlas, Rel 19/2005

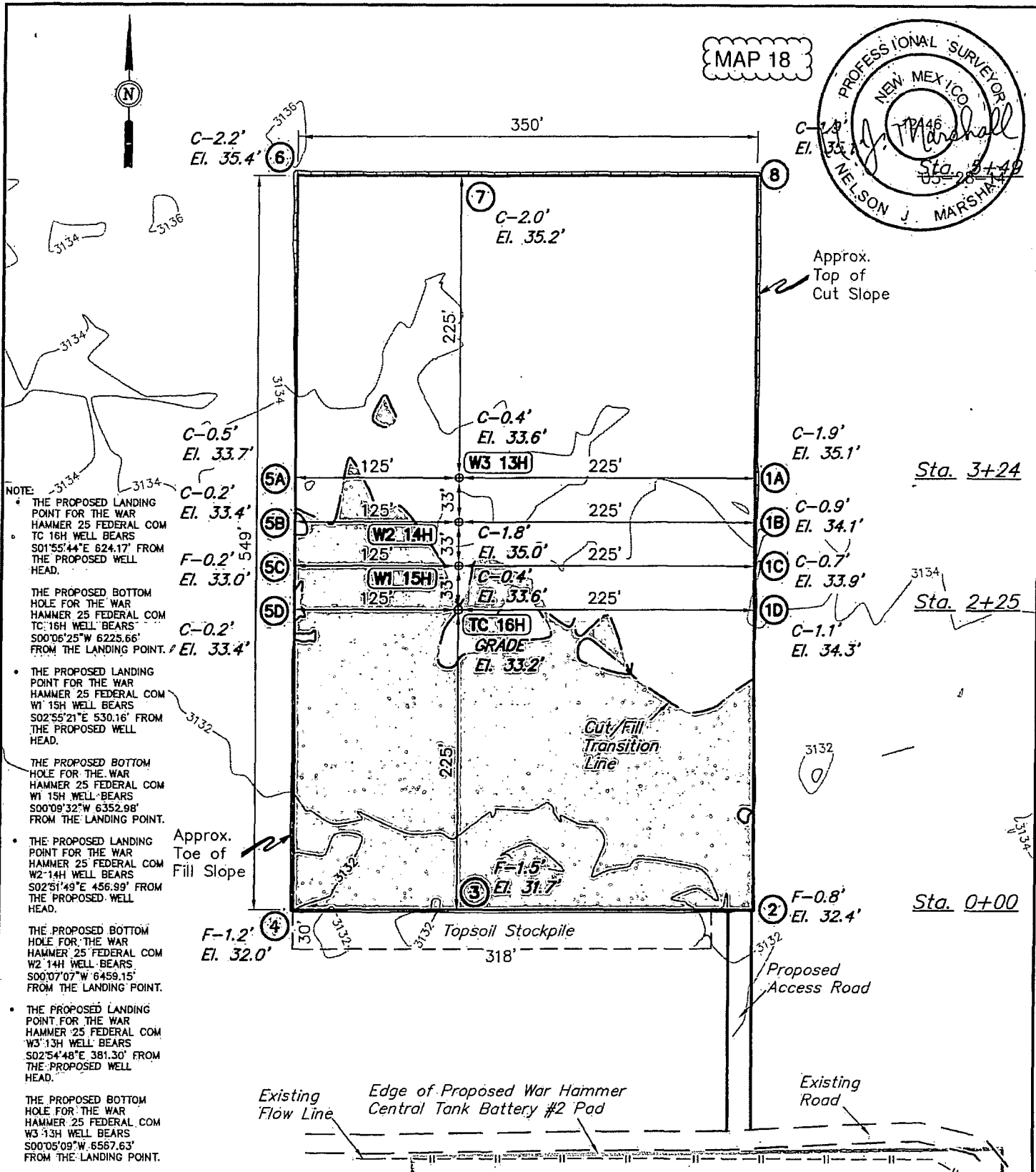
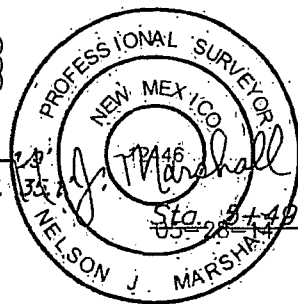
103.70000° W 103.68333° W 103.66667° W 103.65000° W WGS84 103.63333° W



TN + MN
7.5°
06/30/14



MAP 18



ELEV. UNGRADED GROUND AT TC 16H LOC. STAKE = 3133.2' FINISHED GRADE ELEV. AT TC 16H LOC. STAKE = 3133.2'

NOTES:

- Flare pit is to be located a min. of 100' from the well head.
- Underground utilities shown on this sheet are for visualization purposes only, actual locations to be determined prior to construction.

ConocoPhillips

ConocoPhillips Company

WAR HAMMER 25 FEDERAL COM
TC 16H, W1 15H, W2 14H & W3 13H
SECTION 25, T26S, R32E, N.M.P.M.
NW 1/4 NE 1/4

DRAWN BY: C.A.G.

SCALE: 1"=100'

DATE: 02-16-14

REVISED: 05-23-14 S.F.

LOCATION LAYOUT

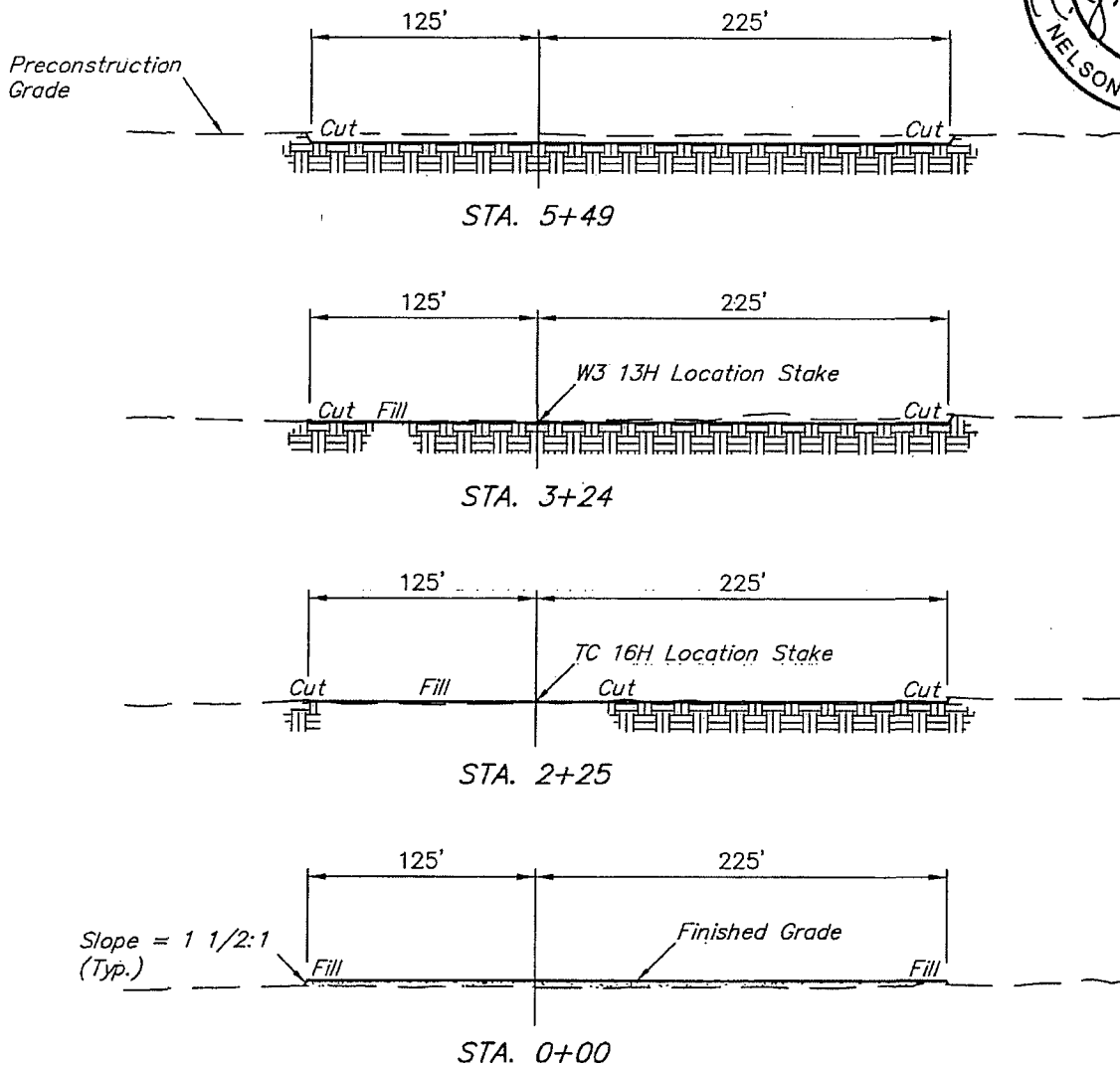
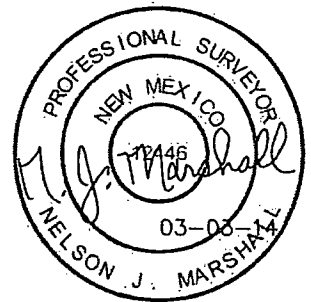
FIGURE #1



Corporate Office * 85 South 200 East
Vernal, UT 84078 * (435) 789-1017

X-Section
Scale
1" = 40'
1" = 100'

MAP 19



APPROXIMATE EARTHWORK QUANTITIES		APPROXIMATE SURFACE DISTURBANCE AREAS		
(3") TOPSOIL STRIPPING	1,810 Cu. Yds.		DISTANCE	ACRES
REMAINING LOCATION	3,490 Cu. Yds.	WELL SITE DISTURBANCE	NA	±4.486
TOTAL CUT	5,300 Cu. Yds.	ACCESS ROAD DISTURBANCE	±166.02'	±0.076
FILL	3,490 Cu. Yds.	FLOW LINE DISTURBANCE	±182.18'	±0.042
EXCESS MATERIAL	1,810 Cu. Yds.	POWER LINE DISTURBANCE	±182.54'	±0.042
TOPSOIL	1,810 Cu. Yds.	TOTAL DISTURBANCE	±530.74'	±4.646
EXCESS UNBALANCE (After Interim Rehabilitation)	0 Cu. Yds.			

- NOTES:
- Fill quantity includes 5% for compaction.
 - Topsoil should not be stripped below finished grade on substructure area.

ConocoPhillips

ConocoPhillips Company

WAR HAMMER 25 FEDERAL COM
TC 16H, W1 15H, W2 14H & W3 13H
SECTION 25, T26S, R32E, N.M.P.M.
NW 1/4 NE 1/4

DRAWN BY: C.A.G.

SCALE: AS SHOWN

DATE: 02-16-14

REVISED:

Corporate Office * 85 South 200 East
Vernal, UT 84078 * (435) 789-1017



TYPICAL CROSS SECTIONS

FIGURE #2



MAP 20



- o W3 13H
- o W2 14H
- o W1 15H
- o TC 16H

Topsoil Stockpile

700' X 600'
Archaeological Survey
Boundary

Proposed
Access Road

Existing
Flow Line

Edge of Proposed War Hammer
Central Tank Battery #2 Pad

Existing
Road

NOTES:

ConocoPhillips

ConocoPhillips Company

WAR HAMMER 25 FEDERAL COM
TC 16H, W1 15H, W2 14H & W3 13H
SECTION 25, T26S, R32E, N.M.P.M.
NW 1/4 NE 1/4

DRAWN BY: C.A.G.

SCALE: 1" = 100'

DATE: 02-16-14

REVISED:

ARCHAEOLOGICAL SURVEY
BOUNDARY

FIGURE #5



Corporate Office * 85 South 200 East
Vernal, UT 84078 * (435) 789-1017