

HOBBS OCD

MAY 12 2015

District I
1625 N. French Dr., Hobbs, NM 88240
Phone: (575) 393-6161 Fax: (575) 393-0720
District II
811 S. First St., Artesia, NM 88210
Phone: (575) 748-1283 Fax: (575) 748-9720
District III
1000 Rio Brazos Road, Aztec, NM 87410
Phone: (505) 334-6178 Fax: (505) 334-6170
District IV
1220 S. St. Francis Dr., Santa Fe, NM 87505
Phone: (505) 476-3460 Fax: (505) 476-3462

State of New Mexico
Energy, Minerals & Natural Resources Department
OIL CONSERVATION DIVISION
1220 South St. Francis Dr.
Santa Fe, NM 87505

Form C-102
Revised August 1, 2011
Submit one copy to appropriate
District Office

☐ AMENDED REPORT

WELL LOCATION AND ACREAGE DEDICATION PLAT

30-025- ¹ API Number 42561	² Pool Code 98081	WC-025 G-09 S263225A; WOLF CAMP
⁴ Property Code 313578	⁵ Property Name WAR HAMMER 25 FEDERAL COM W2	
217817	⁸ Operator Name ConocoPhillips Company	⁶ Well Number 10H
		⁹ Elevation 3134'

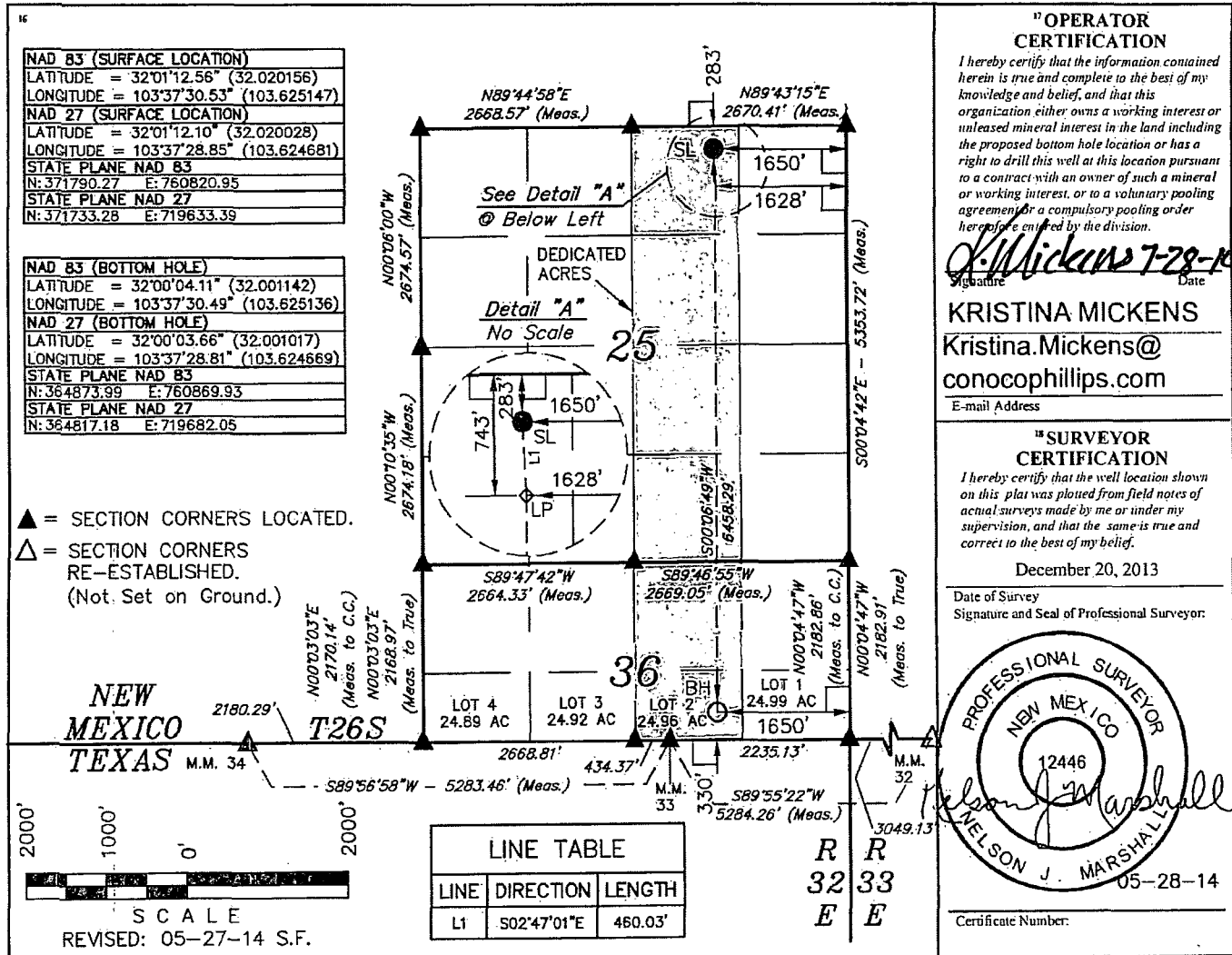
"Surface Location

UL or lot no.	Section	Township	Range	Lot Idn	Feet from the	North/South line	Feet from the	East/West line	County
B	25	26 S	32 E		283	NORTH	1650	EAST	LEA

"Bottom Hole Location If Different From Surface

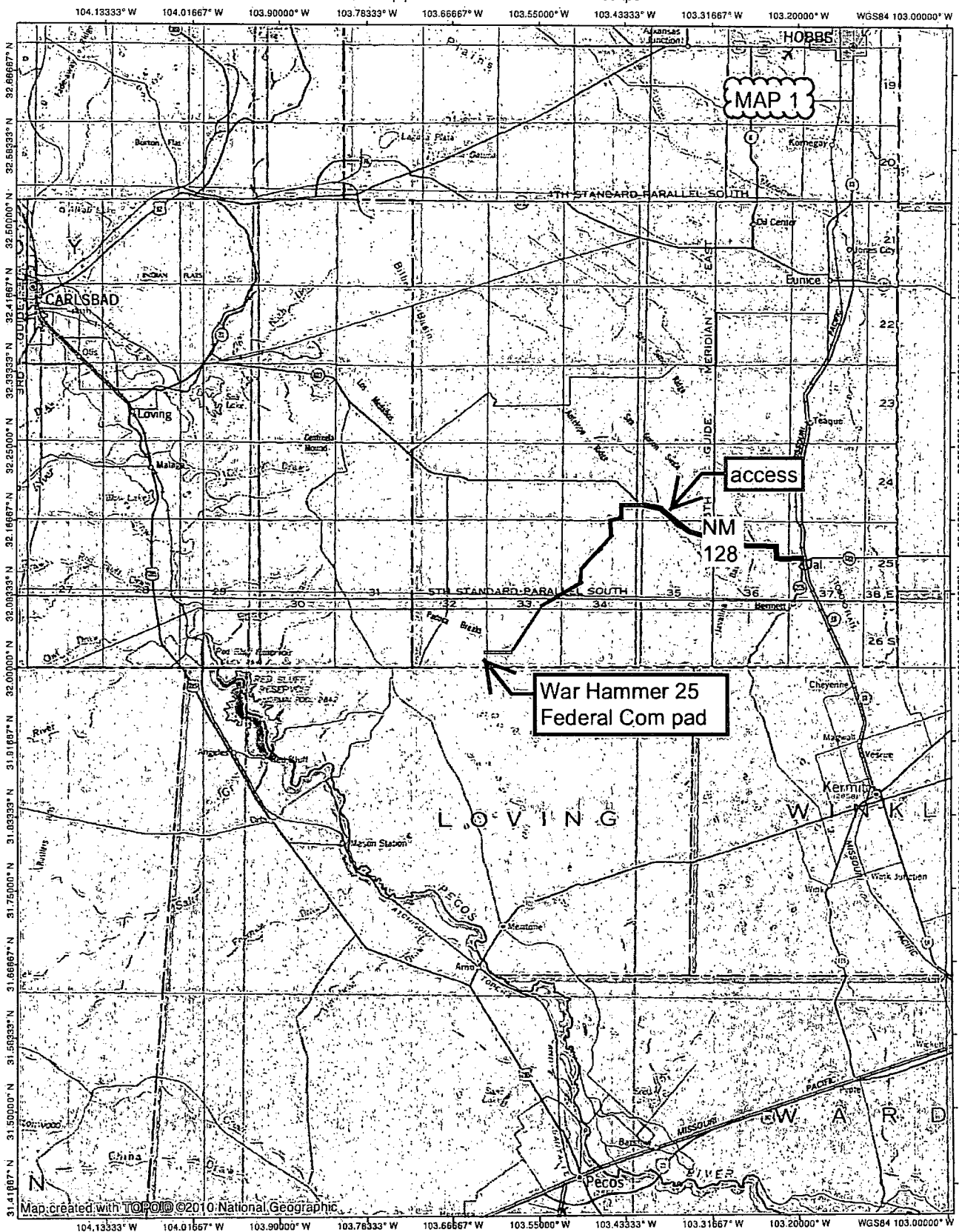
UL or lot no.	Section	Township	Range	Lot Idn	Feet from the	North/South line	Feet from the	East/West line	County
2	36	26 S	32 E		330	SOUTH	1650	EAST	LEA
¹² Dedicated Acres 224.96	¹³ Joint or Infill	¹⁴ Consolidation Code C	¹⁵ Order No.						

No allowable will be assigned to this completion until all interests have been consolidated or a non-standard unit has been approved by the division.

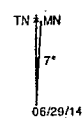
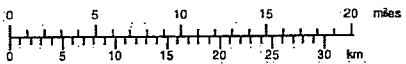


MAY 13 2015

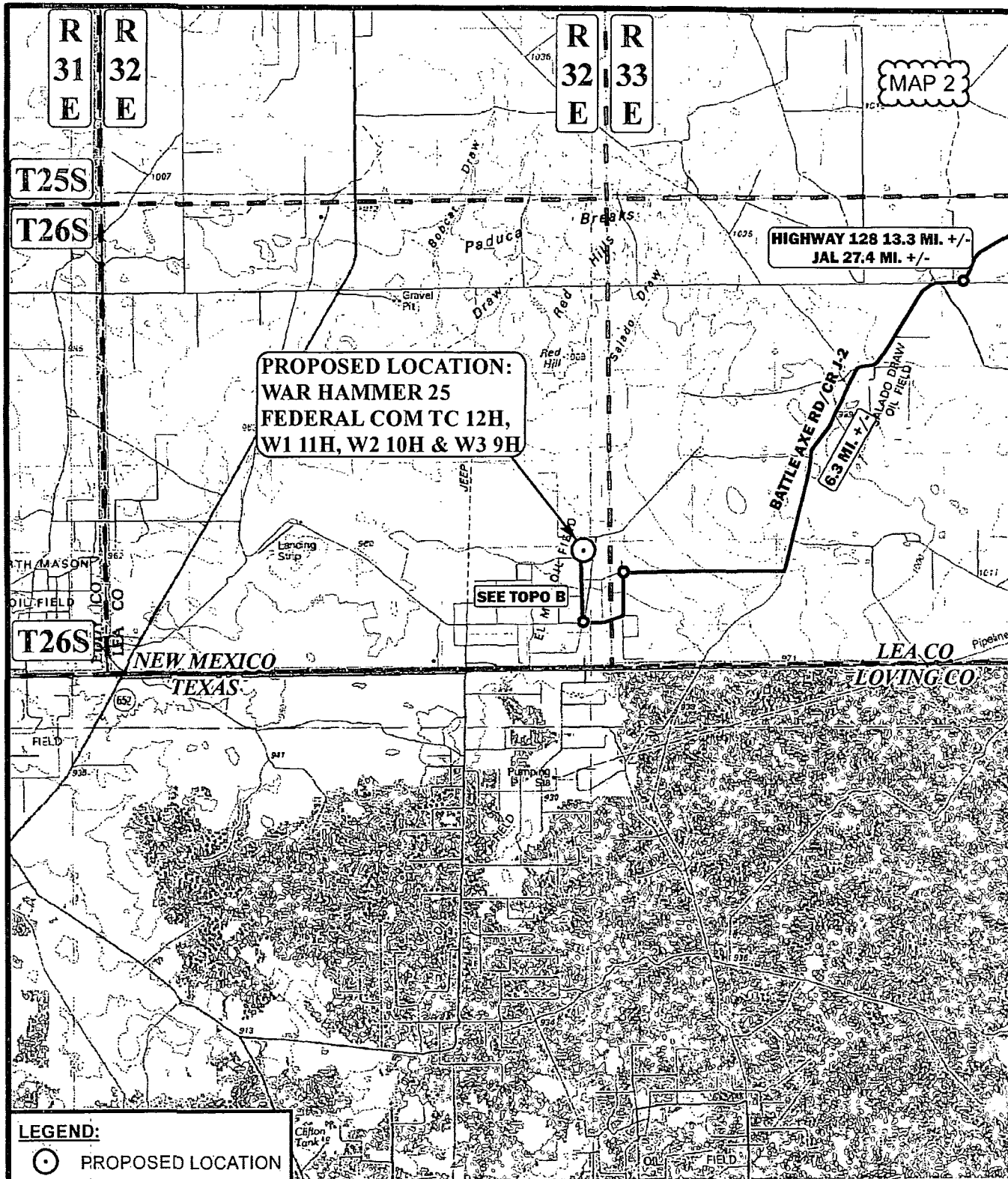
TOPO! map printed on 06/29/14 from "Untitled.tpo"



Map created with TOPO! ©2010 National Geographic



06/29/14



LEGEND:



PROPOSED LOCATION

SCALE: 1:100,000

REVISION: 00-00-00

DRAWN BY: L.S.

DATE DRAWN: 01-08-14



Corporate Office * 85 South 200 East
Vernal, UT 84078 * (435) 789-1017



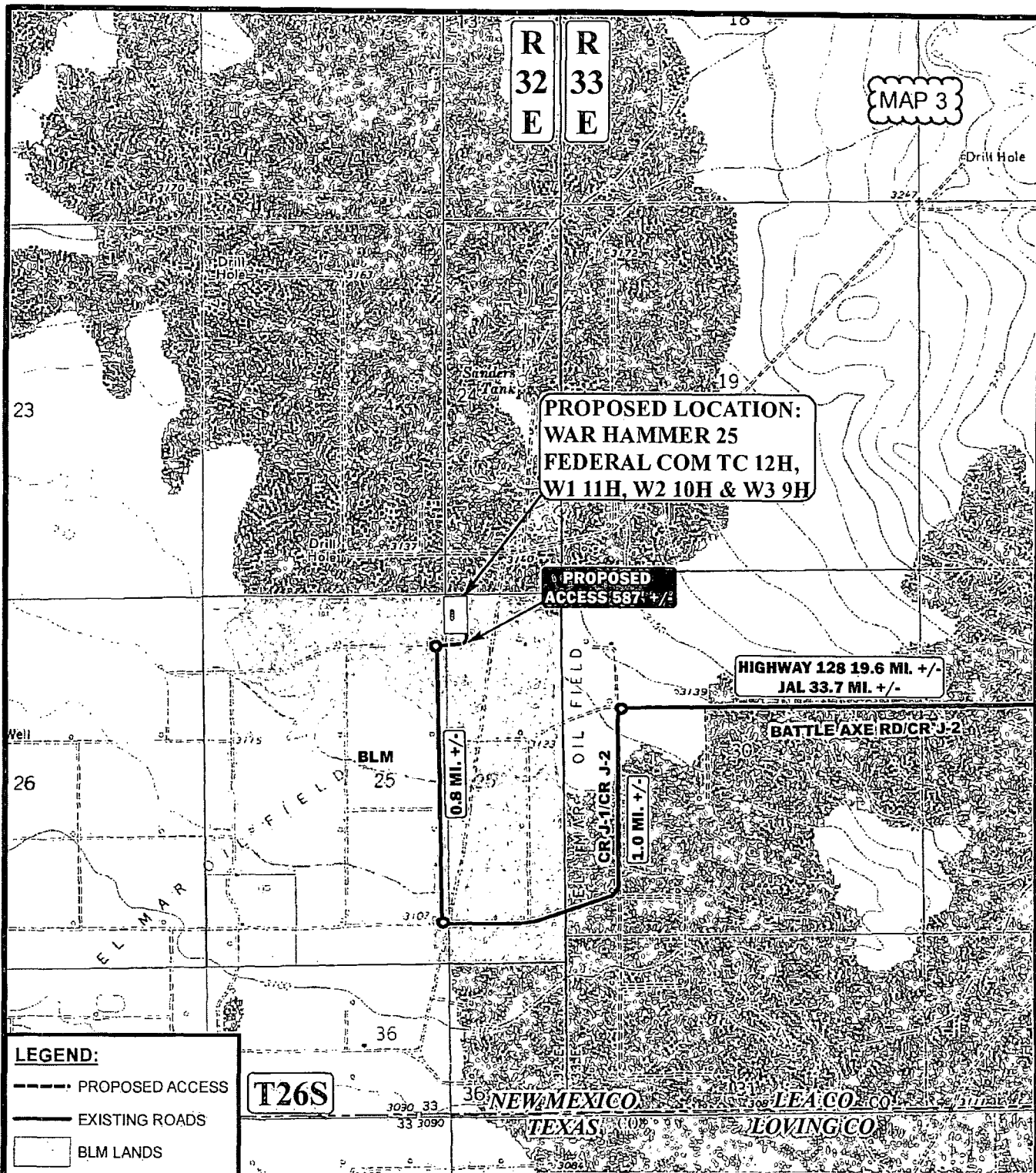
ConocoPhillips

ConocoPhillips Company

WAR HAMMER 25 FEDERAL COM TC 12H,
W1 11H, W2 10H & W3 9H
SECTION 25, T26S, R32E, N.M.P.M.
NW1/4 NE1/4

ACCESS ROAD MAP

TOPO A



LEGEND:

- PROPOSED ACCESS
- EXISTING ROADS
- BLM LANDS

T26S

*PARCEL DATA SHOWN HAS BEEN OBTAINED FROM VARIOUS SOURCES AND SHOULD BE USED FOR MAPPING, GRAPHIC AND PLANNING PURPOSES ONLY. NO WARRANTY IS MADE BY UINTAH ENGINEERING & LAND SURVEYING (UELS) FOR ACCURACY OF THE PARCEL DATA.

SCALE: 1" = 2000' REVISION: 00-00-00
 DRAWN BY: L.S.
 DATE DRAWN: 01-08-14



ConocoPhillips

ConocoPhillips Company

WAR HAMMER 25 FEDERAL COM TC 12H,
 W1 11H, W2 10H & W3 9H
 SECTION 25, T26S, R32E, N.M.P.M.
 NW1/4 NE1/4

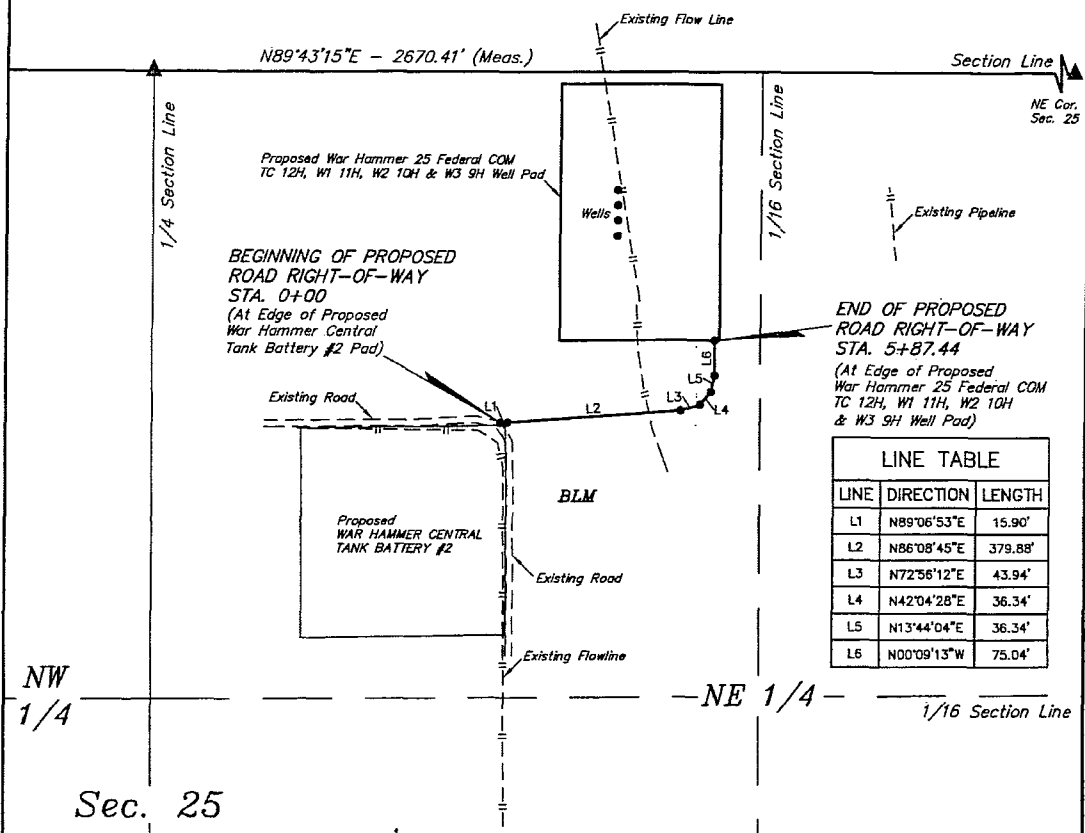
ACCESS ROAD MAP

TOPO B



Corporate Office * 85 South 200 East
 Vernal, UT 84078 * (435) 789-1017

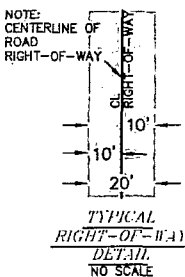
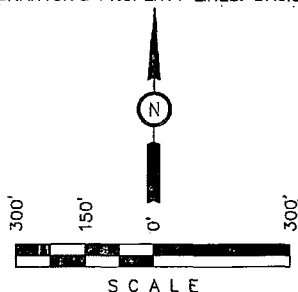
MAP 4



ROAD RIGHT-OF-WAY DESCRIPTION

A 20' WIDE RIGHT-OF-WAY 10' ON EACH SIDE OF THE FOLLOWING DESCRIBED CENTERLINE.

BEGINNING AT A POINT IN THE NW 1/4 NE 1/4 OF SECTION 25, T26S, R32E, N.M.P.M., WHICH BEARS S45°49'34"E 1068.68' FROM THE NORTH 1/4 CORNER OF SAID SECTION 25, THENCE N89°06'53"E 15.90'; THENCE N86°08'45"E 379.88'; THENCE N72°56'12"E 43.94'; THENCE N42°04'28"E 36.34'; THENCE N13°44'04"E 36.34'; THENCE N00°09'13"W 75.04' TO A POINT IN THE NW 1/4 NE 1/4 OF SAID SECTION 25, WHICH BEARS S65°17'43"E 1360.73' FROM THE NORTH 1/4 CORNER OF SAID SECTION 25. THE SIDE LINES OF SAID DESCRIBED RIGHT-OF-WAY BEING SHORTENED OR ELONGATED TO MEET THE GRANTOR'S PROPERTY LINES. BASIS OF BEARINGS IS A G.P.S. OBSERVATION. CONTAINS 0.279 ACRES MORE OR LESS.



BEGINNING OF ROAD STA. 0+00 BEARS S45°49'34"E 1068.68' FROM THE NORTH 1/4 CORNER OF SECTION 25, T26S, R32E, N.M.P.M.

END OF ROAD STA. 6+06.94 BEARS S65°17'43"E 1360.73' FROM THE NORTH 1/4 CORNER OF SECTION 25, T26S, R32E, N.M.P.M.

RIGHT-OF-WAY LENGTHS			
DESCRIPTION	FEET	ACRES	RODS
BLM NE 1/4	587.44	0.270	35.60

▲ = SECTION CORNERS LOCATED.

CERTIFICATE OF PROFESSIONAL SURVEY

THIS IS TO CERTIFY THAT THE ABOVE MAP WAS PREPARED FROM FIELD NOTES OF ACTUAL SURVEYS MADE BY ME OR UNDER MY SUPERVISION AND THAT THE SAME ARE TRUE AND CORRECT TO THE BEST OF MY KNOWLEDGE AND BELIEF.

12446
Robert J. Marshall
 REGISTERED LAND SURVEYOR
 REGISTRATION NO. 12446
 STATE OF NEW MEXICO
 03-03-14

NOTES:

- The maximum grade of existing ground for the proposed access road is ± 0.7%.

ConocoPhillips

ConocoPhillips Company

WAR HAMMER 25 FEDERAL COM
 TC 12H, W1 11H, W2 10H & W3 9H
 SECTION 25, T26S, R32E, N.M.P.M.
 NW 1/4 NE 1/4

DRAWN BY: C.A.G.

SCALE: 1" = 300'

DATE: 02-17-14

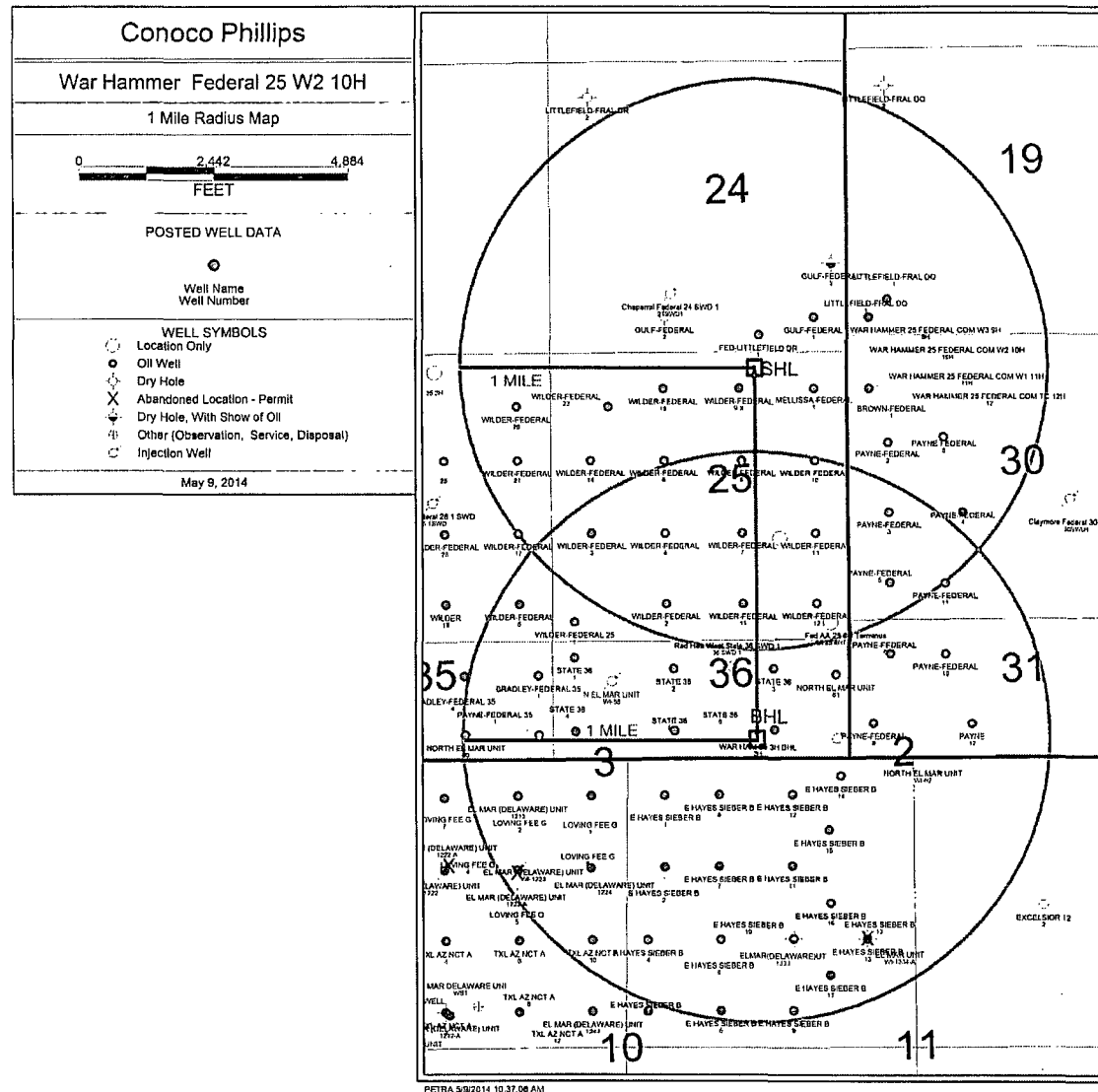
REVISED:

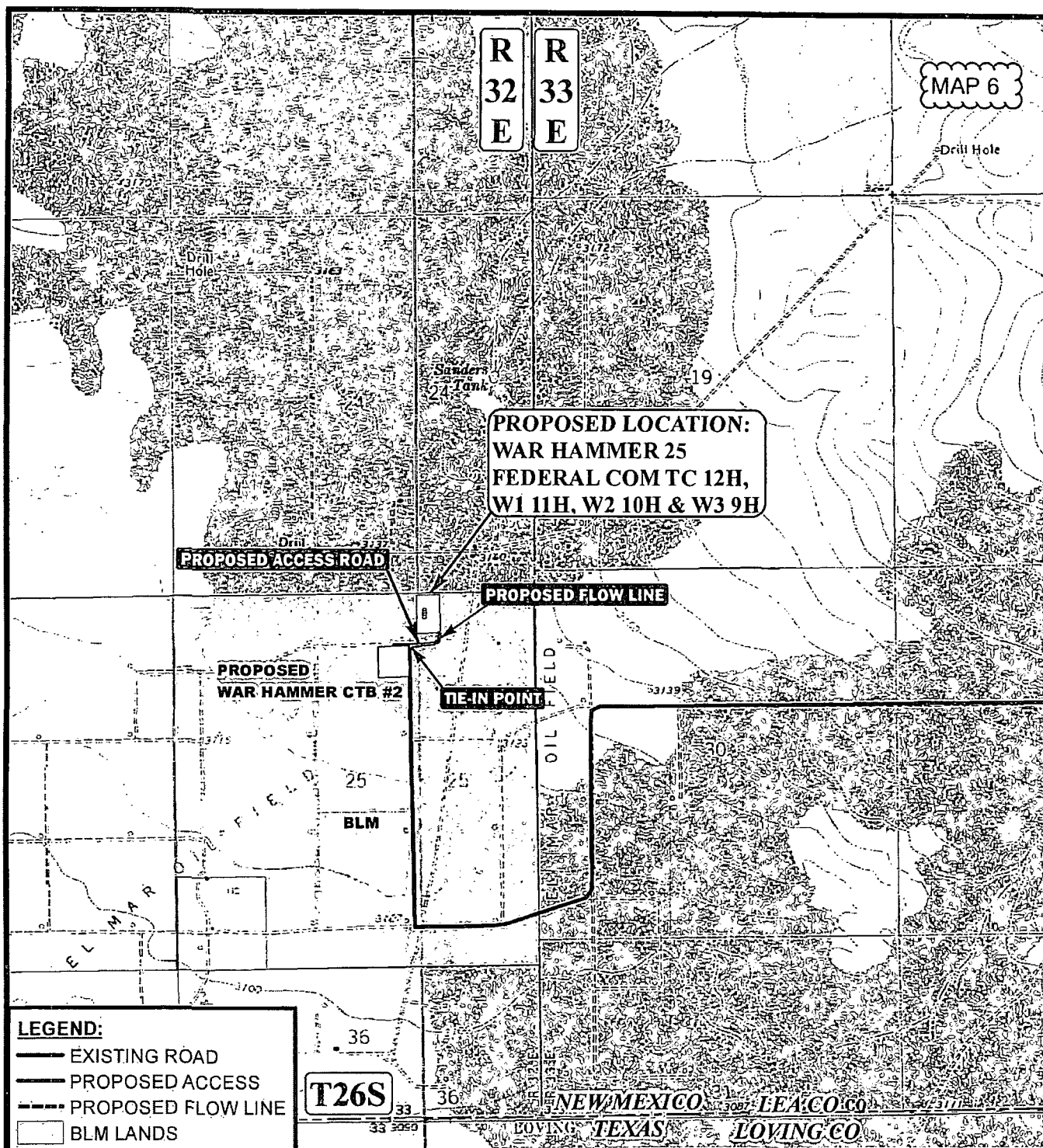
ACCESS ROAD R-O-W



Corporate Office * 85 South 200 East
 Vernal, UT 84078 * (435) 789-1017

MAP 5





LEGEND:

- EXISTING ROAD
- PROPOSED ACCESS
- - - PROPOSED FLOW LINE
- BLM LANDS

APPROXIMATE TOTAL FLOW LINE DISTANCE = 595' +/-

*PARCEL DATA SHOWN HAS BEEN OBTAINED FROM VARIOUS SOURCES AND SHOULD BE USED FOR MAPPING, GRAPHIC AND PLANNING PURPOSES ONLY. NO WARRANTY IS MADE BY UTAH ENGINEERING & LAND SURVEYING (UELS) FOR ACCURACY OF THE PARCEL DATA.

SCALE: 1" = 2000'

REVISION: 00-00-00

DRAWN BY: L.S.

DATE DRAWN: 01-08-14



ConocoPhillips

ConocoPhillips Company

WAR HAMMER 25 FEDERAL COM TC 12H,
W1 11H, W2 10H & W3 9H
SECTION 25, T26S, R32E, N.M.P.M.
NW1/4 NE1/4

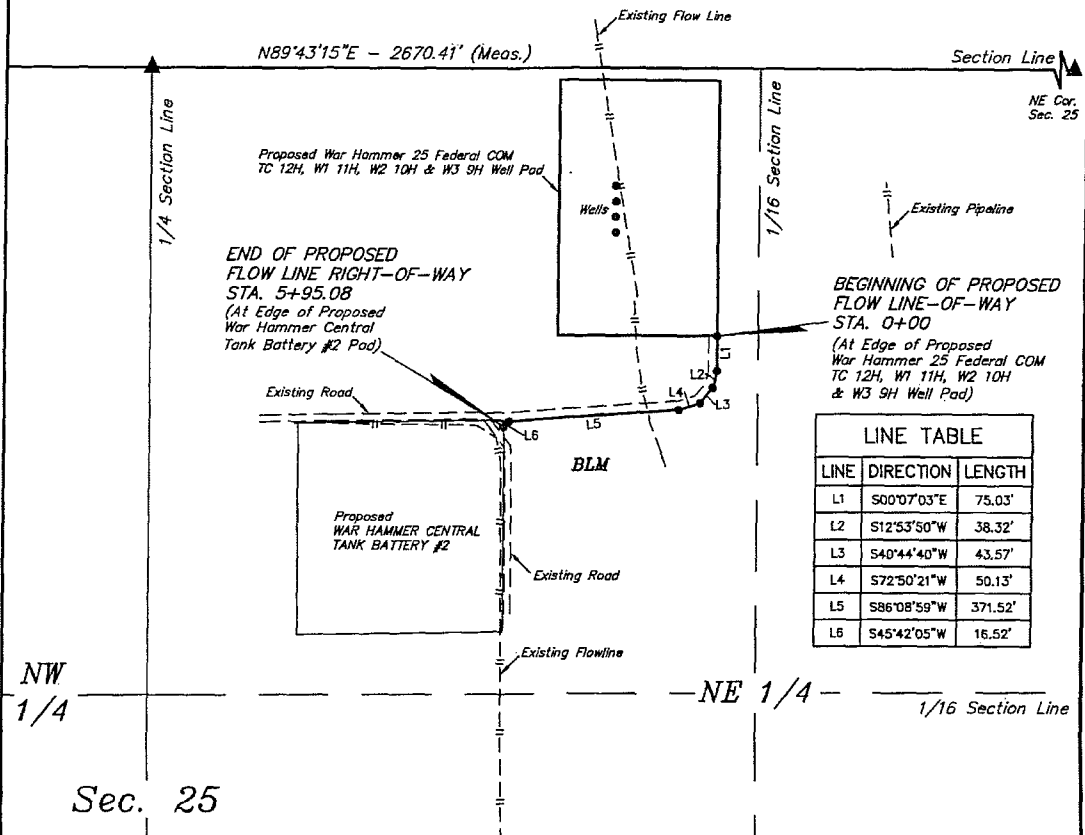
FLOW LINE MAP

TOPO D



Corporate Office * 85 South 200 East
Vernal, UT 84078 * (435) 789-1017

MAP 7

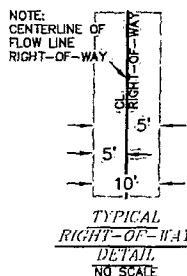
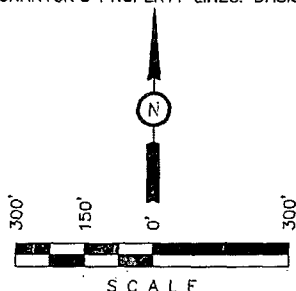


LINE TABLE		
LINE	DIRECTION	LENGTH
L1	S00°07'03\"E	75.03'
L2	S12°53'50\"W	38.32'
L3	S40°44'40\"W	43.57'
L4	S72°50'21\"W	50.13'
L5	S86°08'59\"W	371.52'
L6	S45°42'05\"W	16.52'

FLOW LINE RIGHT-OF-WAY DESCRIPTION

A 10' WIDE RIGHT-OF-WAY 5' ON EACH SIDE OF THE FOLLOWING DESCRIBED CENTERLINE.

BEGINNING AT A POINT IN THE NW 1/4 NE 1/4 OF SECTION 25, T26S, R32E, N.M.P.M., WHICH BEARS S65°28'13\"E 1369.83' FROM THE NORTH 1/4 CORNER OF SAID SECTION 25, THENCE S00°07'03\"E 75.03'; THENCE S12°53'50\"W 38.32'; THENCE S40°44'40\"W 43.57'; THENCE S72°50'21\"W 50.13'; THENCE S86°08'59\"W 371.52'; THENCE S45°42'05\"W 16.52' TO A POINT IN THE NW 1/4 NE 1/4 OF SAID SECTION 25, WHICH BEARS S45°30'16\"E 1092.06' FROM THE NORTH 1/4 CORNER OF SAID SECTION 25. THE SIDE LINES OF SAID DESCRIBED RIGHT-OF-WAY BEING SHORTENED OR ELONGATED TO MEET THE GRANTOR'S PROPERTY LINES. BASIS OF BEARINGS IS A G.P.S. OBSERVATION. CONTAINS 0.137 ACRES MORE OR LESS.



BEGINNING OF FLOW LINE STA. 0+00 BEARS S65°28'13\"E 1369.83' FROM THE NORTH 1/4 CORNER OF SECTION 25, T26S, R32E, N.M.P.M.

END OF FLOW LINE STA. 5+95.08 BEARS S45°30'16\"E 1092.06' FROM THE NORTH 1/4 CORNER OF SECTION 25, T26S, R32E, N.M.P.M.

RIGHT-OF-WAY LENGTHS			
DESCRIPTION	FEET	ACRES	RODS
BLM NE 1/4	595.08	0.137	36.07

▲ = SECTION CORNERS LOCATED.

THIS IS TO CERTIFY THAT THE ABOVE STATEMENT WAS PREPARED FROM FIELD NOTES OF ACTUAL SURVEYS MADE BY ME OR UNDER MY SUPERVISION AND THAT THE SAME ARE TRUE AND CORRECT TO THE BEST OF MY KNOWLEDGE AND BELIEF.

CERTIFICATE OF PROFESSIONAL SURVEYOR
 [Signature]
 REGISTERED LAND SURVEYOR
 REGISTRATION NO. 12446
 STATE OF NEW MEXICO 03-03-14

NOTES:

ConocoPhillips

ConocoPhillips Company

WAR HAMMER 25 FEDERAL COM
 TC 12H, W1 11H, W2 10H & W3 9H
 SECTION 25, T26S, R32E, N.M.P.M.
 NW 1/4 NE 1/4

DRAWN BY: C.A.G.

SCALE: 1" = 300'

DATE: 02-17-14

REVISED:

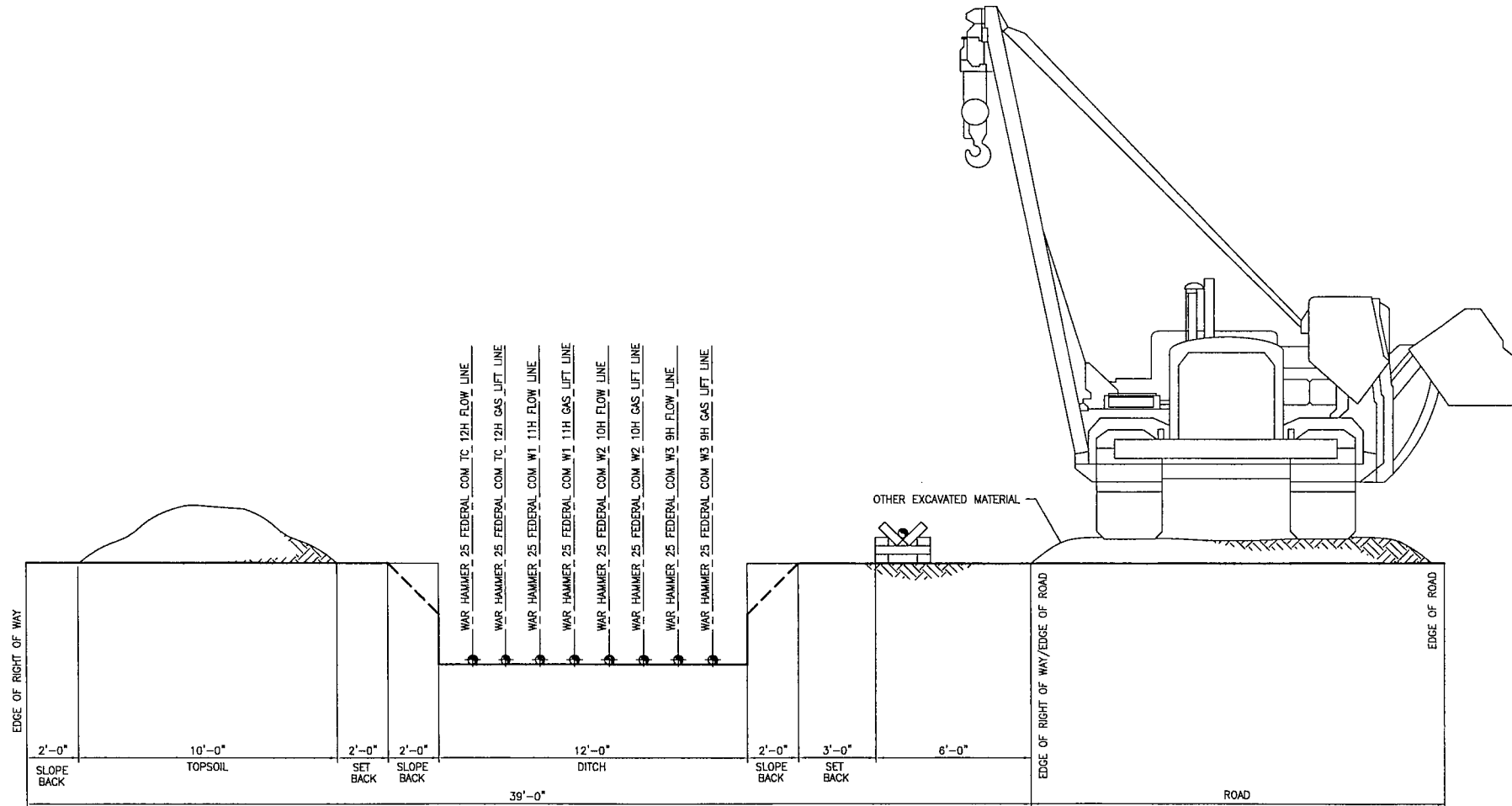
FLOW LINE R-O-W



Corporate Office * 85 South 200 East
 Vernal, UT 84078 * (435) 789-1017

FLOW LINE RIGHT OF WAY

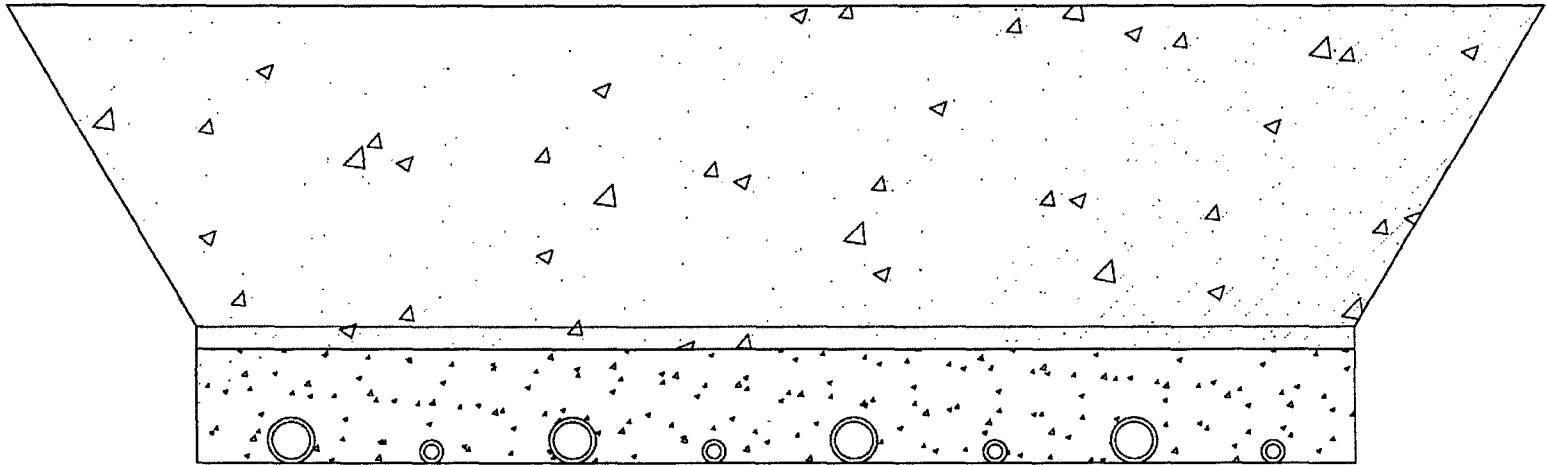
WAR HAMMER 25 FEDERAL COM W3 9H, WAR HAMMER 25 FEDERAL COM W2 10H, WAR HAMMER 25 FEDERAL COM W1 11H, WAR HAMMER 25 FEDERAL COM TC 12H



REFERENCE DWG NO:								DRAWN: TTM				DESIGN: RAR				<div>ConocoPhillips</div> <div>Mid Continent Business Unit</div>				PRMU FLOW LINE R-O-W																															
								CHECKED: RAR				APPROVAL:								OC NO:				WAR HAMMER 25 FEDERAL COM																											
																				WAR 9H, W2 10H, W1 11H, TC 12H																															
A 05/13/14				ISSUE FOR APPROVAL				TTM RAR								SCALE: NA				DATE: 05/13/14				CADD FILENAME:				JOB NO: -				SUB JOB NO: -				DRAWING NO: WAR HAMMER COM W3 9H_W2 10H_W1 11H_TC 12H				SHEET: 1 OF 1				REV: A							
REV DATE				REVISION				BY CHK APP APP																																											

BACKFILL AROUND PIPE

**WAR HAMMER 25 FEDERAL COM W3 9H, WAR HAMMER 25 FEDERAL COM
W2 10H, WAR HAMMER 25 FEDERAL COM W1 11H, WAR HAMMER 25
FEDERAL COM TC 12H**



BACKFILL DIRT TO BE AS FREE OF ROCKS AND LARGE PARTICLES AS POSSIBLE

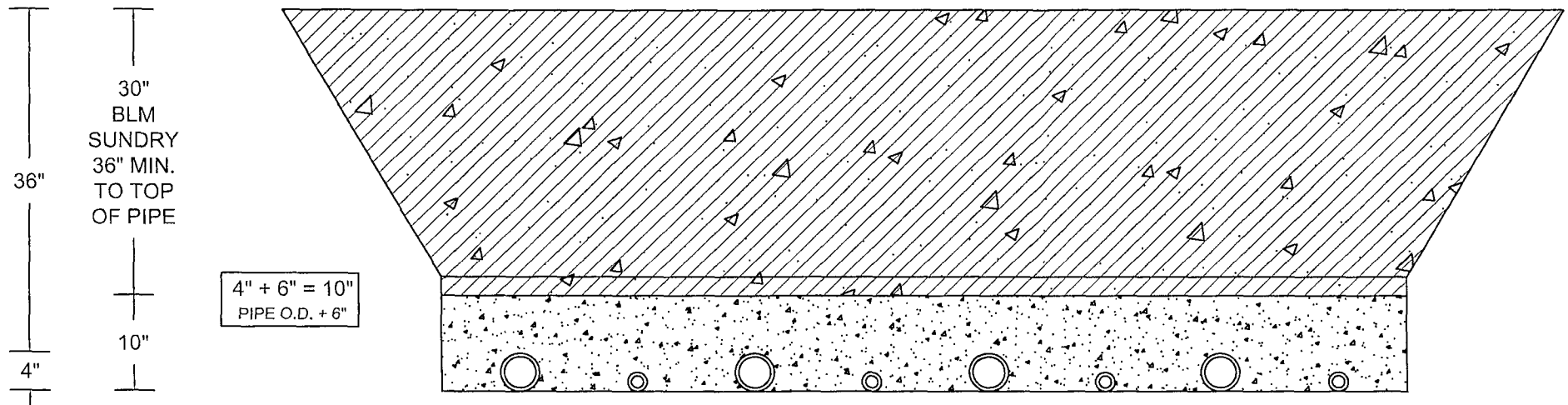
FLOW LINE WILL BE 4" COATED STEEL PIPE w/ AN OPERATING PRESSURE UP TO 1480# PSI.

GAS SUPPLY LINE WILL BE 2" STEEL PIPE w/ AN OPERATING PRESSURE UP TO 1100# PSI.

SOFT FILL DIRT OR SAND WITH NO ROCKS OR SOLID PARTICLES GREATER THAN 1" IN CIRCUMFERENCE

BACKFILL AROUND PIPE

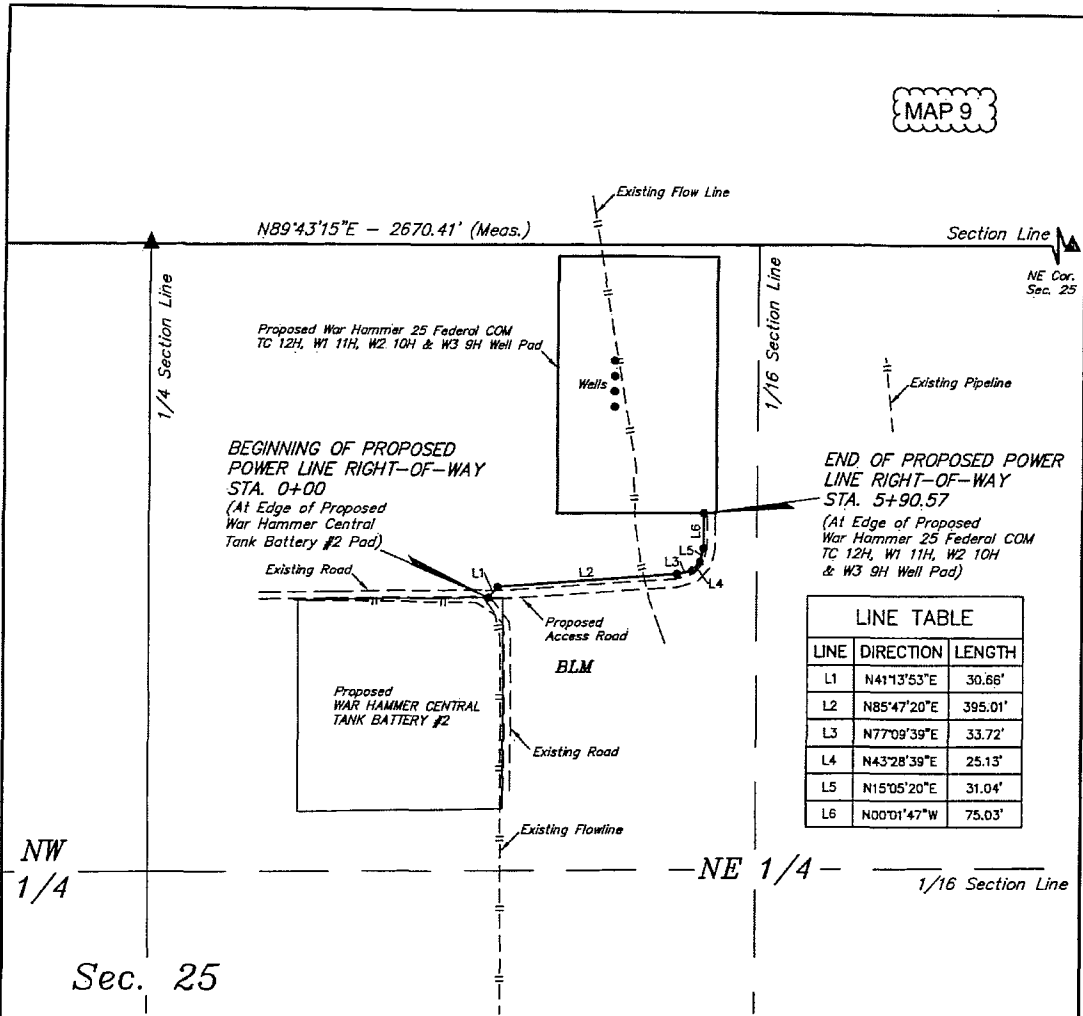
WAR HAMMER 25 FEDERAL COM W3 9H, WAR HAMMER 25 FEDERAL COM
W2 10H, WAR HAMMER 25 FEDERAL COM W1 11H, WAR HAMMER 25
FEDERAL COM TC 12H



ALTERNATING 4" PIPE (FLOW LINE) +
2" PIPE (GAS LIFT)

6" CLEARANCE AT BOTH ENDS

9" CLEARANCE BETWEEN EACH PIPE

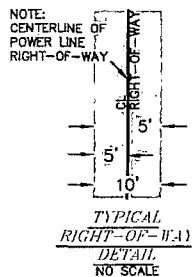
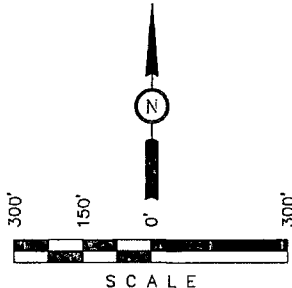


LINE TABLE		
LINE	DIRECTION	LENGTH
L1	N41°13'53"E	30.66'
L2	N85°47'20"E	395.01'
L3	N77°09'39"E	33.72'
L4	N43°28'39"E	25.13'
L5	N15°05'20"E	31.04'
L6	N00°01'47"W	75.03'

POWER LINE RIGHT-OF-WAY DESCRIPTION

A 10' WIDE RIGHT-OF-WAY 5' ON EACH SIDE OF THE FOLLOWING DESCRIBED CENTERLINE.

BEGINNING AT A POINT IN THE NW 1/4 NE 1/4 OF SECTION 25, T26S, R32E, N.M.P.M., WHICH BEARS S44°49'33"E 1059.58' FROM THE NORTH 1/4 CORNER OF SAID SECTION 25, THENCE N41°13'53"E 30.66'; THENCE N85°47'20"E 395.01'; THENCE N77°09'39"E 33.72'; THENCE N43°28'39"E 25.13'; THENCE N15°05'20"E 31.04'; THENCE N00°01'47"W 75.03' TO A POINT IN THE NW 1/4 NE 1/4 OF SAID SECTION 25, WHICH BEARS S64°59'38"E 1345.42' FROM THE NORTH 1/4 CORNER OF SAID SECTION 25. THE SIDE LINES OF SAID DESCRIBED RIGHT-OF-WAY BEING SHORTENED OR ELONGATED TO MEET THE GRANTOR'S PROPERTY LINES. BASIS OF BEARINGS IS A G.P.S. OBSERVATION. CONTAINS 0.136 ACRES MORE OR LESS.



BEGINNING OF POWER LINE STA. 0+00 BEARS S44°49'33"E 1059.58' FROM THE NORTH 1/4 CORNER OF SECTION 25, T26S, R32E, N.M.P.M.

END OF POWER LINE STA. 5+90.57 BEARS S64°59'38"E 1345.42' FROM THE NORTH 1/4 CORNER OF SECTION 25, T26S, R32E, N.M.P.M.

CERTIFICATE OF PROFESSIONAL SURVEY

THIS IS TO CERTIFY THAT THE ABOVE MAP WAS PREPARED FROM FIELD NOTES OF ACTUAL SURVEYS MADE BY ME OR UNDER MY SUPERVISION AND THAT THE SAME ARE TRUE AND CORRECT TO THE BEST OF MY KNOWLEDGE AND BELIEF.

[Signature]
REGISTERED LAND SURVEYOR
REGISTRATION NO. 12446
STATE OF NEW MEXICO
03-03-14

RIGHT-OF-WAY LENGTHS			
DESCRIPTION	FEET	ACRES	RODS
BLM NE 1/4	590.57	0.136	35.79

▲ = SECTION CORNERS LOCATED.

NOTES:

ConocoPhillips

ConocoPhillips Company

WAR HAMMER 25 FEDERAL COM
TC 12H, W1 11H, W2 10H & W3 9H
SECTION 25, T26S, R32E, N.M.P.M.
NW 1/4 NE 1/4

DRAWN BY: C.A.G.

SCALE: 1" = 300'

DATE: 02-17-14

REVISED:

POWER LINE R-O-W



Corporate Office * 85 South 200 East
Vernal, UT 84078 * (435) 789-1017

MAP 10

War Hammer 25 Federal Com
TC 12H, W1 11H, W2 10H, & W3 9H

Central Tank
Battery 2

587.44' proposed road
590.57' proposed power line
595.08' proposed pipelines

proposed
power line
1,106.67'

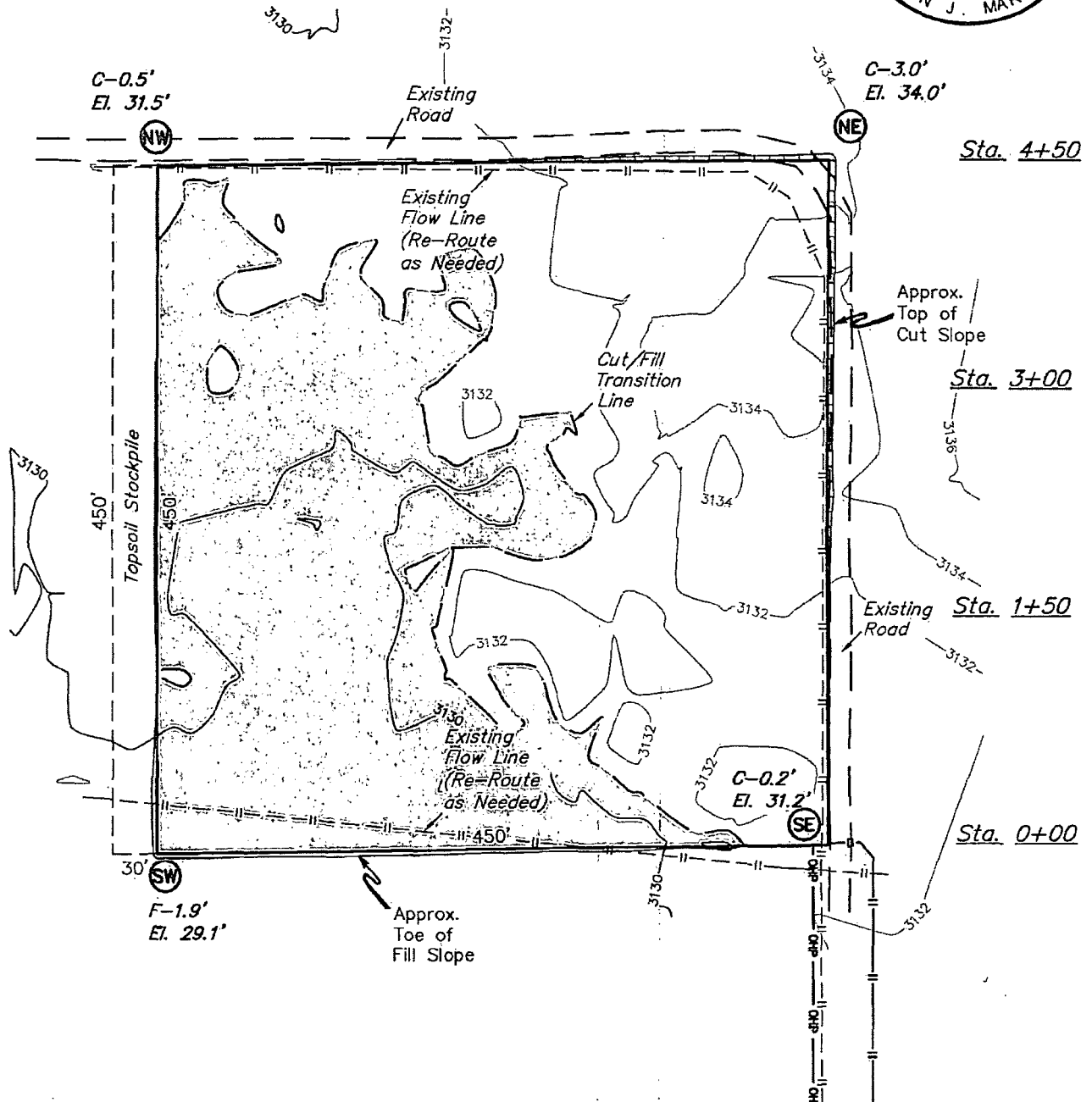
Google earth

Survey

Imagery Date: 4/7/2013 Lat: 32.018041 Lon: -103.625605 Elev: 3136 ft. Eye alt: 6118 ft. ©



MAP 12



ELEV. UNGRADED GROUND AT SW STAKE = 3129.1' FINISHED GRADE ELEV. AT SW STAKE = 3131.0'

NOTES:

- Underground utilities shown on this sheet are for visualization purposes only, actual locations to be determined prior to construction.

ConocoPhillips

ConocoPhillips Company

WAR HAMMER CENTRAL TANK BATTERY #2
SECTION 25, T26S, R32E, N.M.P.M.
NW 1/4 NE 1/4

DRAWN BY: C.A.G.

SCALE: 1" = 100'

DATE: 02-20-14

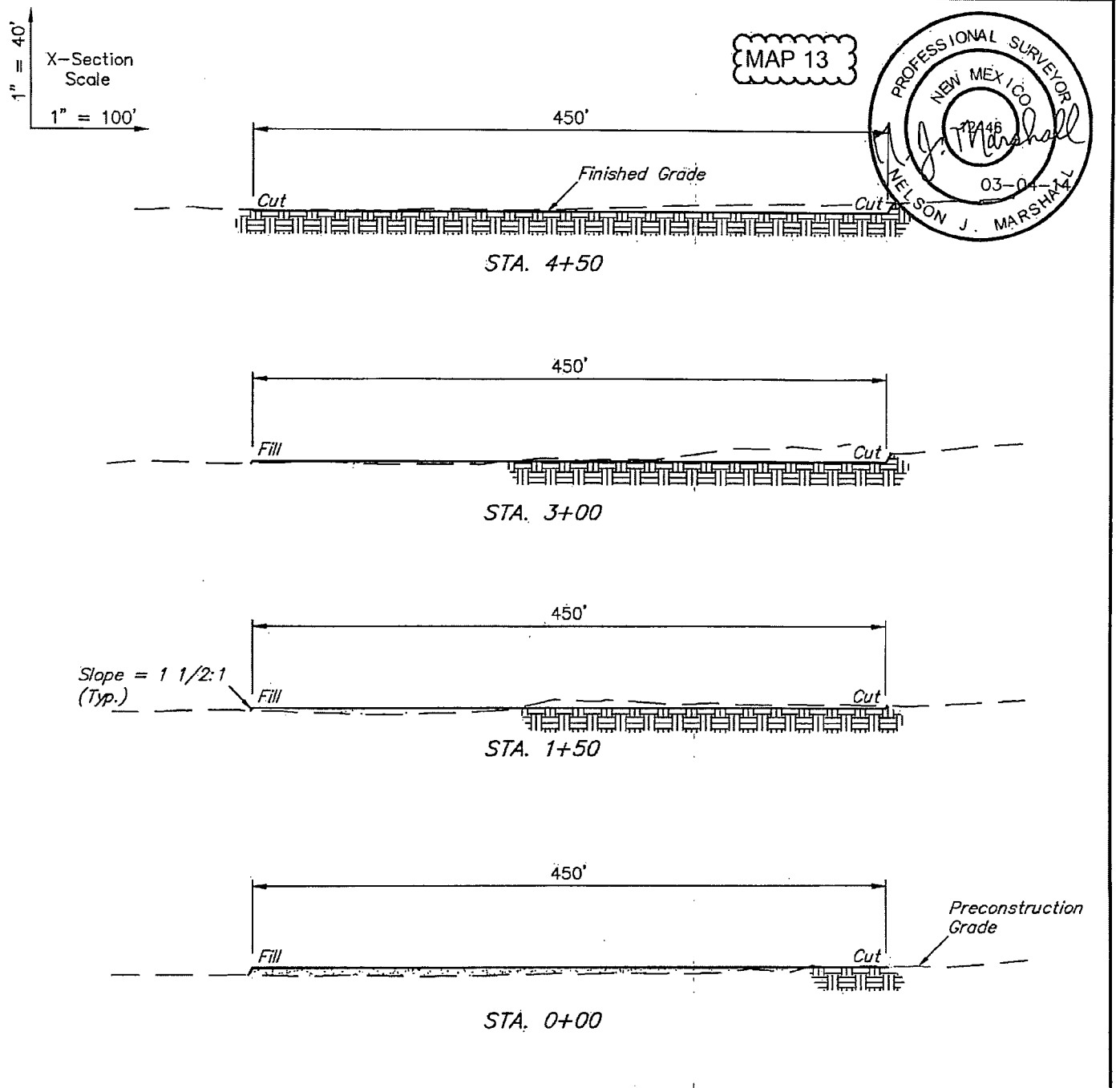
REVISED:

LOCATION LAYOUT

FIGURE #1



Corporate Office * 85 South 200 East
Vernal, UT 84078 * (435) 789-1017



APPROXIMATE EARTHWORK QUANTITIES		APPROXIMATE SURFACE DISTURBANCE AREAS		
(3") TOPSOIL STRIPPING	1,910 Cu. Yds.		DISTANCE	ACRES
REMAINING LOCATION	4,700 Cu. Yds.	WELL SITE DISTURBANCE	NA	±4.731
TOTAL CUT	6,610 Cu. Yds.	PIPELINE DISTURBANCE	±1118.27'	±0.257
FILL	4,700 Cu. Yds.	POWER LINE DISTURBANCE	±1106.67'	±0.254
EXCESS MATERIAL	1,910 Cu. Yds.			
TOPSOIL	1,910 Cu. Yds.			
EXCESS UNBALANCE (After Interim Rehabilitation)	0 Cu. Yds.	TOTAL DISTURBANCE	±2224.94'	±5.242

NOTES:

- Fill quantity includes 5% for compaction.

ConocoPhillips

ConocoPhillips Company

WAR HAMMER CENTRAL TANK BATTERY #2
SECTION 25, T26S, R32E, N.M.P.M.
NW 1/4 NE 1/4

DRAWN BY: C.A.G.

SCALE: AS SHOWN

DATE: 02-20-14

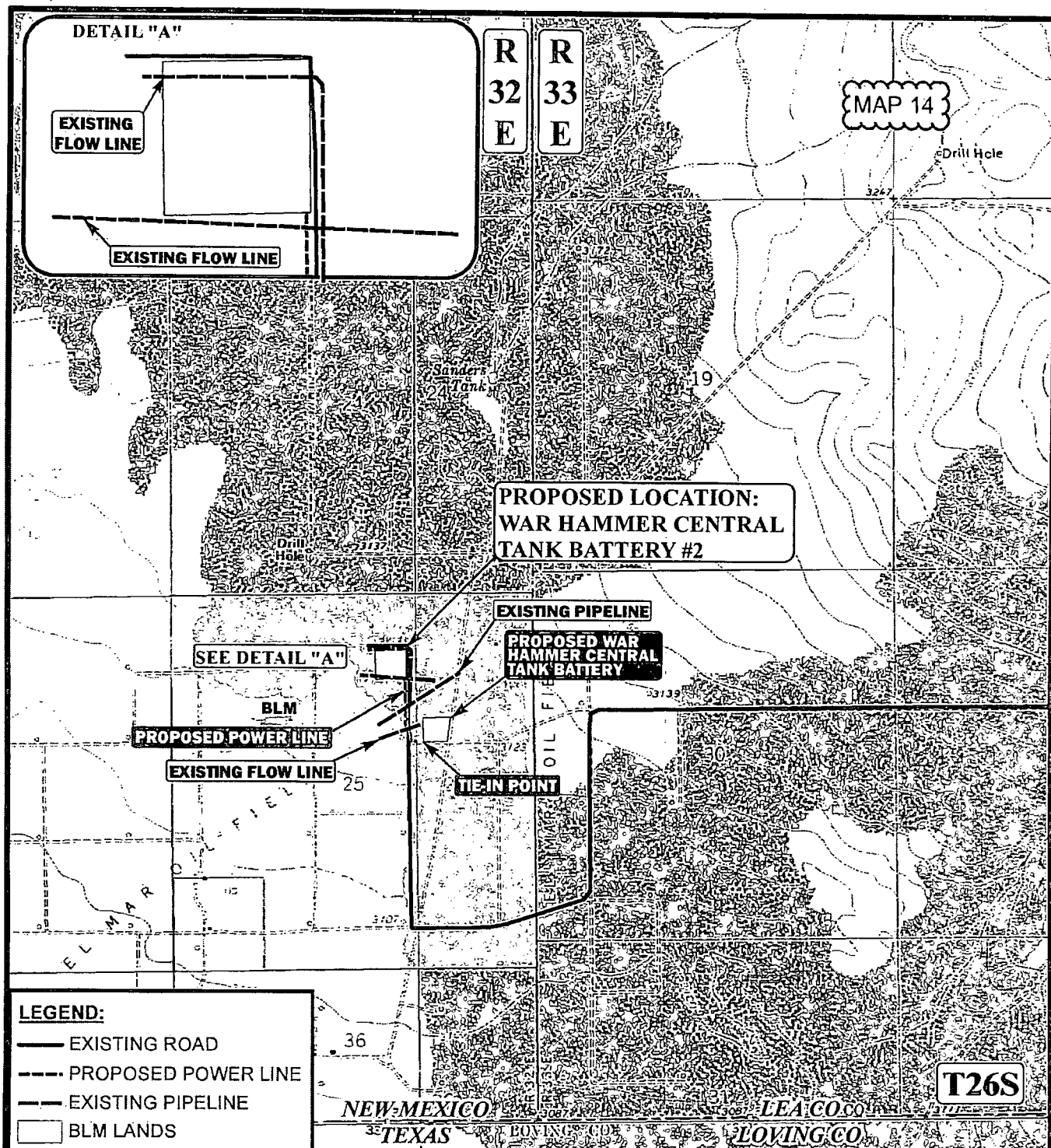
REVISED:

TYPICAL CROSS SECTIONS

FIGURE #2



Corporate Office * 85 South 200 East
Vernal, UT 84078 * (435) 789-1017



LEGEND:

- EXISTING ROAD
- - - PROPOSED POWER LINE
- EXISTING PIPELINE
- BLM LANDS

APPROXIMATE TOTAL POWER LINE DISTANCE = 1,107' +/-

*PARCEL DATA SHOWN HAS BEEN OBTAINED FROM VARIOUS SOURCES AND SHOULD BE USED FOR MAPPING, GRAPHIC AND PLANNING PURPOSES ONLY. NO WARRANTY IS MADE BY UTAH ENGINEERING & LAND SURVEYING (UELS) FOR ACCURACY OF THE PARCEL DATA.

SCALE: 1" = 2000'

REVISED: 00-00-00

DRAWN BY: L.S.

DATE DRAWN: 02-24-14



ConocoPhillips

ConocoPhillips Company

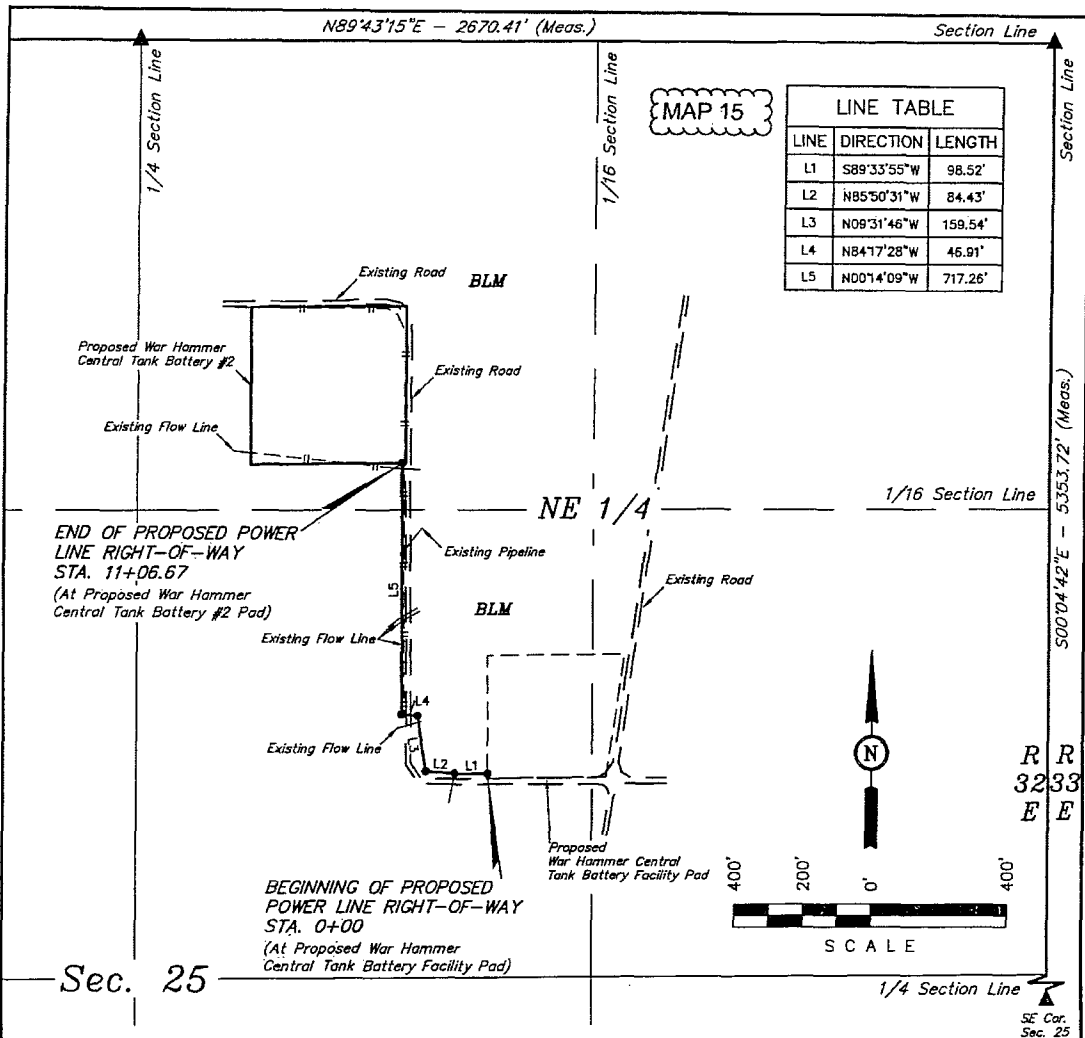
WAR HAMMER CENTRAL TANK BATTERY #2
SECTION 25, T26S, R32E, N.M.P.M.
NW 1/4 NE 1/4

POWER LINE MAP

TOPOE



Corporate Office * 85 South 200 East
Vernal, UT 84078 * (435) 789-1017



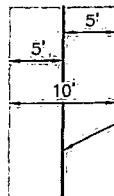
POWER LINE RIGHT-OF-WAY DESCRIPTION

A 10' WIDE RIGHT-OF-WAY 5' ON EACH SIDE OF THE FOLLOWING DESCRIBED CENTERLINE.

BEGINNING AT A POINT IN THE SW 1/4 NE 1/4 OF SECTION 25, T26S, R32E, N.M.P.M., WHICH BEARS S26°16'00"E 2325.98' FROM THE NORTH 1/4 CORNER OF SAID SECTION 25, THENCE S89°33'55"W 98.52'; THENCE N85°50'31"W 84.43'; THENCE N09°31'46"W 159.54'; THENCE N84°17'28"W 46.91'; THENCE N00°14'09"W 717.26' TO A POINT IN THE NW 1/4 NE 1/4 OF SAID SECTION 25, WHICH BEARS S32°40'53"E 1427.10' FROM THE NORTH 1/4 CORNER OF SAID SECTION 25. THE SIDE LINES OF SAID DESCRIBED RIGHT-OF-WAY BEING SHORTENED OR ELONGATED TO MEET THE GRANTOR'S PROPERTY LINES. BASIS OF BEARINGS IS A G.P.S. OBSERVATION. CONTAINS 0.254 ACRES MORE OR LESS.

BEGINNING OF POWER LINE STA. 0+00 BEARS S26°16'00"E 2325.98' FROM THE NORTH 1/4 CORNER OF SECTION 25, T26S, R32E, N.M.P.M.

END OF POWER LINE STA. 11+06.67 BEARS S32°40'53"E 1427.10' FROM THE NORTH 1/4 CORNER OF SECTION 25, T26S, R32E, N.M.P.M.



TYPICAL
RIGHT-OF-WAY
DETAIL
No Scale

RIGHT-OF-WAY LENGTHS

DESCRIPTION	FEET	ACRES	RODS
BLM NE 1/4	1106.67	0.254	67.07

▲ = SECTION CORNERS LOCATED.

CERTIFICATE OF PROFESSIONAL SURVEY

THIS IS TO CERTIFY THAT THE ABOVE WAS PREPARED FROM FIELD NOTES OF ACTUAL SURVEYS MADE BY ME OR UNDER MY SUPERVISION AND THAT THE SAME ARE TRUE AND CORRECT TO THE BEST OF MY KNOWLEDGE AND BELIEF.

12446
Nelson J. Marshall
REGISTERED LAND SURVEYOR
REGISTRATION NO. 12446
STATE OF NEW MEXICO 03-04-14

NOTES:

ConocoPhillips

ConocoPhillips Company

WAR HAMMER CENTRAL TANK BATTERY #2
SECTION 25, T26S, R32E, N.M.P.M.
NW 1/4 NE 1/4

DRAWN BY: C.A.G.

SCALE: 1" = 400'

DATE: 02-20-14

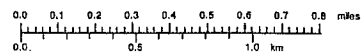
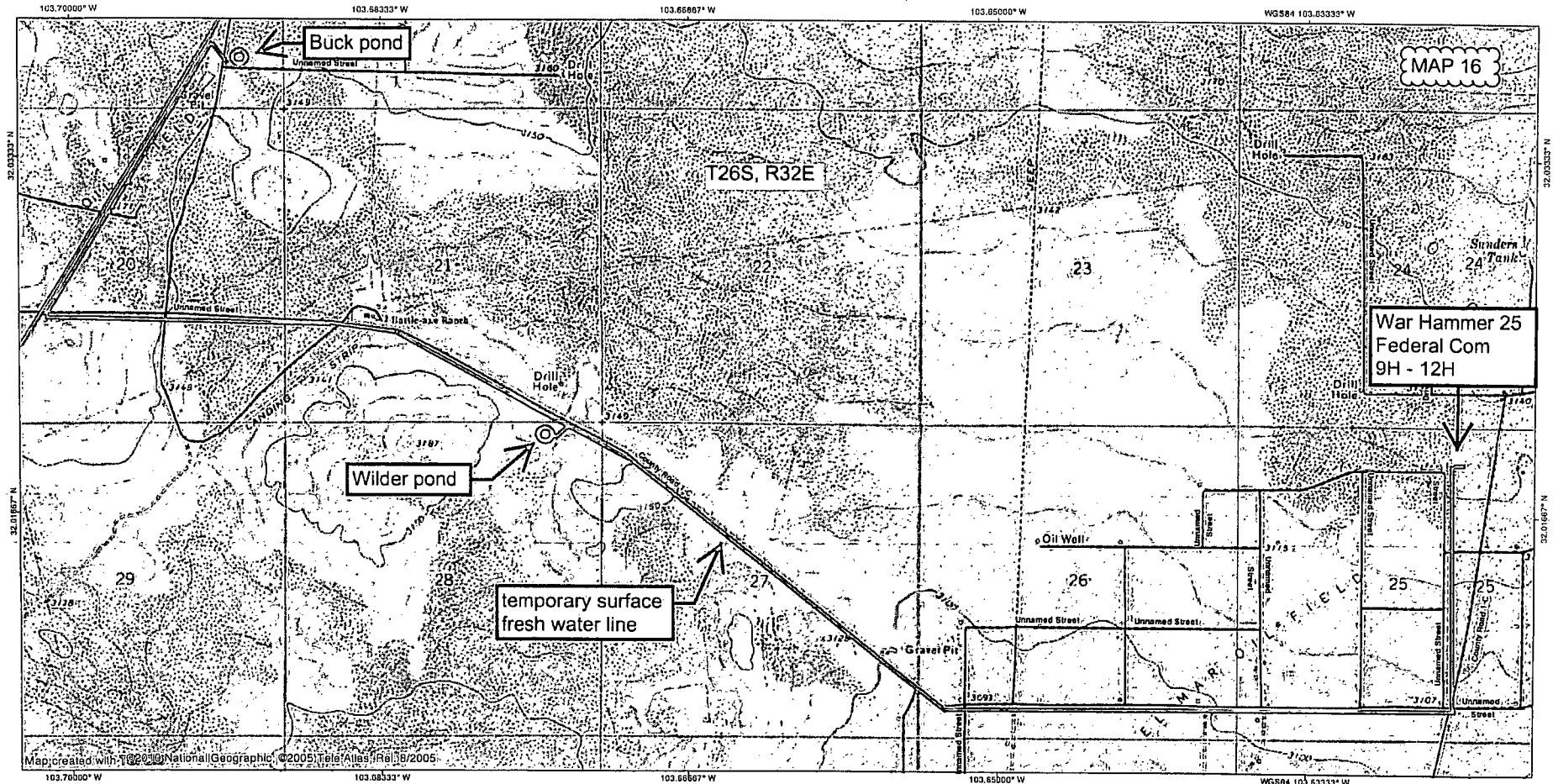
REVISED:

POWER LINE R-O-W

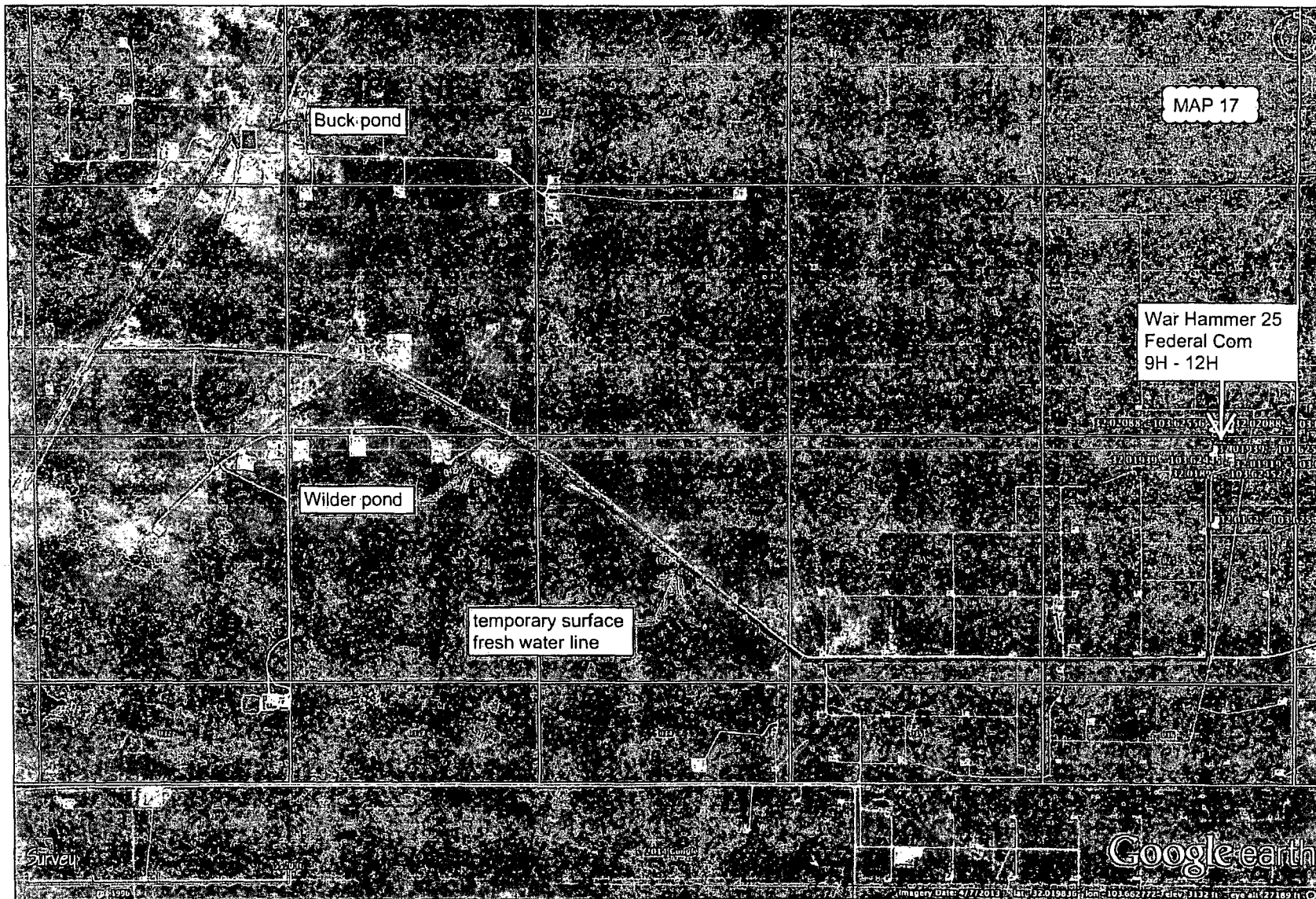


Corporate Office * 85 South 200 East
Vernal, UT 84078 * (435) 789-1017

TOPOI map printed on 06/30/14 from "Untitled.tpo"

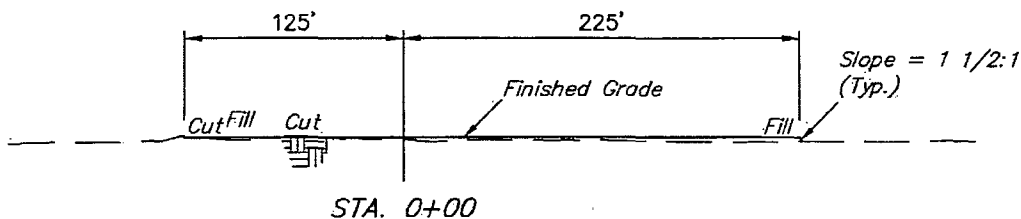
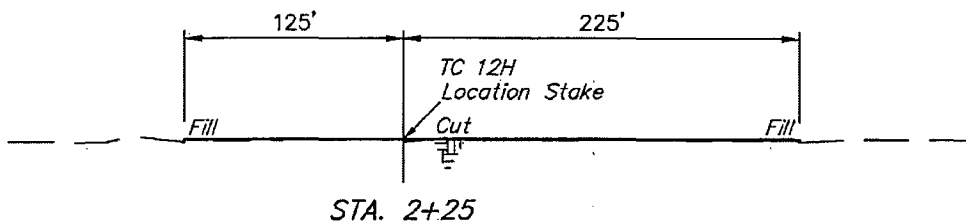
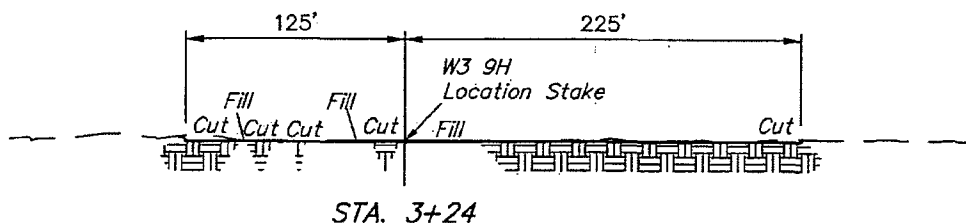
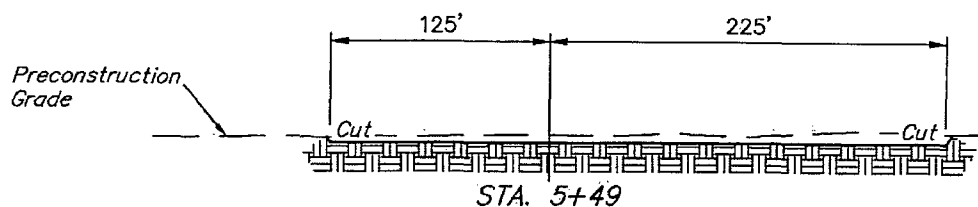
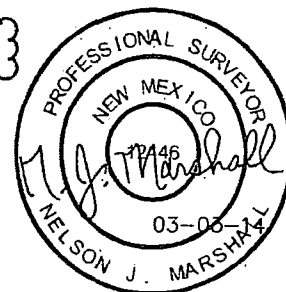


TN 3 MN
7.5°
06/30/14



1" = 40'
X-Section
Scale
1" = 100'

MAP 19



APPROXIMATE EARTHWORK QUANTITIES		APPROXIMATE SURFACE DISTURBANCE AREAS		
(3") TOPSOIL STRIPPING	1,800 Cu. Yds.		DISTANCE	ACRES
REMAINING LOCATION	2,090 Cu. Yds.	WELL SITE DISTURBANCE	NA	±4.467
TOTAL CUT	3,890 Cu. Yds.	ACCESS ROAD DISTURBANCE	±587.44'	±0.270
FILL	2,090 Cu. Yds.	FLOW LINE DISTURBANCE	±595.08'	±0.137
EXCESS MATERIAL	1,800 Cu. Yds.	POWER LINE DISTURBANCE	±590.57'	±0.136
TOPSOIL	1,800 Cu. Yds.	TOTAL DISTURBANCE	±1773.09'	±5.010
EXCESS UNBALANCE (After Interim Rehabilitation)	0 Cu. Yds.			

NOTES:

- Fill quantity includes 5% for compaction.
- Topsoil should not be stripped below finished grade on substructure area.

ConocoPhillips

ConocoPhillips Company

WAR HAMMER 25 FEDERAL COM
TC 12H, W1 11H, W2 10H & W3 9H
SECTION 25, T26S, R32E, N.M.P.M.
NW 1/4 NE 1/4

DRAWN BY: C.A.G.

SCALE: 1" = 60'

DATE: 02-17-13

REVISED:

Corporate Office * 85 South 200 East
Vernal, UT 84078 * (435) 789-1017



TYPICAL CROSS SECTIONS

FIGURE #2

MAP 20

SECTION 24
SECTION 25



LINE TABLE		
LINE	DIRECTION	LENGTH
L1	N80°E	8'

W3 9H
○ W2 10H
○ W1 11H
○ TC 12H

Existing Flow Line

Topsoil Stockpile

600' X 600'
Archaeological Survey
Boundary

Existing Road

Proposed
Access Road

Existing Flow Line

NOTES:

ConocoPhillips

ConocoPhillips Company

WAR HAMMER 25 FEDERAL COM
TC 12H, W1 11H, W2 10H & W3 9H
SECTION 25, T26S, R32E, N.M.P.M.
NW 1/4 NE 1/4

DRAWN BY: C.A.G.

SCALE: 1" = 100'

DATE: 02-17-13

REVISED:

ARCHAEOLOGICAL SURVEY
BOUNDARY

FIGURE #5



Corporate Office * 85 South 200 East
Vernal, UT 84078 * (435) 789-1017