

District I  
1625 N. French Dr., Hobbs, NM 88240  
Phone: (575) 392-6161 Fax: (575) 393-0720  
District II  
811 S. First St., Artesia, NM 88210  
Phone: (575) 748-1283 Fax: (575) 748-9720  
District III  
1000 Rio Brazos Road, Aztec, NM 87410  
Phone: (505) 334-6178 Fax: (505) 334-6170  
District IV  
1220 S. St. Francis Dr., Santa Fe, NM 87505  
Phone: (505) 476-3460 Fax: (505) 476-3462

State of New Mexico  
Energy, Minerals & Natural Resources Department  
OIL CONSERVATION DIVISION  
1220 South St. Francis Dr.  
Santa Fe, NM 87505

Form C-102  
Revised August 1, 2011  
Submit one copy to appropriate  
District Office

MAY 18 2015 ☐ AMENDED REPORT

WELL LOCATION AND ACREAGE DEDICATION RECEIVED

<sup>1</sup> API Number 30-025-42474	<sup>2</sup> Pool Code 7320	<sup>3</sup> Pool Name Brinninstool; Bone Spring
<sup>4</sup> Property Code 314247	<sup>5</sup> Property Name NORTH THISTLE 15-10 STATE COM	
<sup>7</sup> OGRID No. 6137	<sup>6</sup> Operator Name DEVON ENERGY PRODUCTION COMPANY, L.P.	<sup>8</sup> Well Number 1H
		<sup>9</sup> Elevation 3710.3

<sup>10</sup> Surface Location

UL or lot no.	Section	Township	Range	Lot Idn	Feet from the	North/South line	Feet from the	East/West line	County
M	15	23 S	33 E		415	SOUTH	760	WEST	LEA

<sup>11</sup> Bottom Hole Location If Different From Surface

UL or lot no.	Section	Township	Range	Lot Idn	Feet from the	North/South line	Feet from the	East/West line	County
C	10	23 S	33 E		330	NORTH	1732	WEST	LEA

<sup>12</sup> Dedicated Acres 320.00	<sup>13</sup> Joint or Infill	<sup>14</sup> Consolidation Code	<sup>15</sup> Order No.
---	-------------------------------	----------------------------------	-------------------------

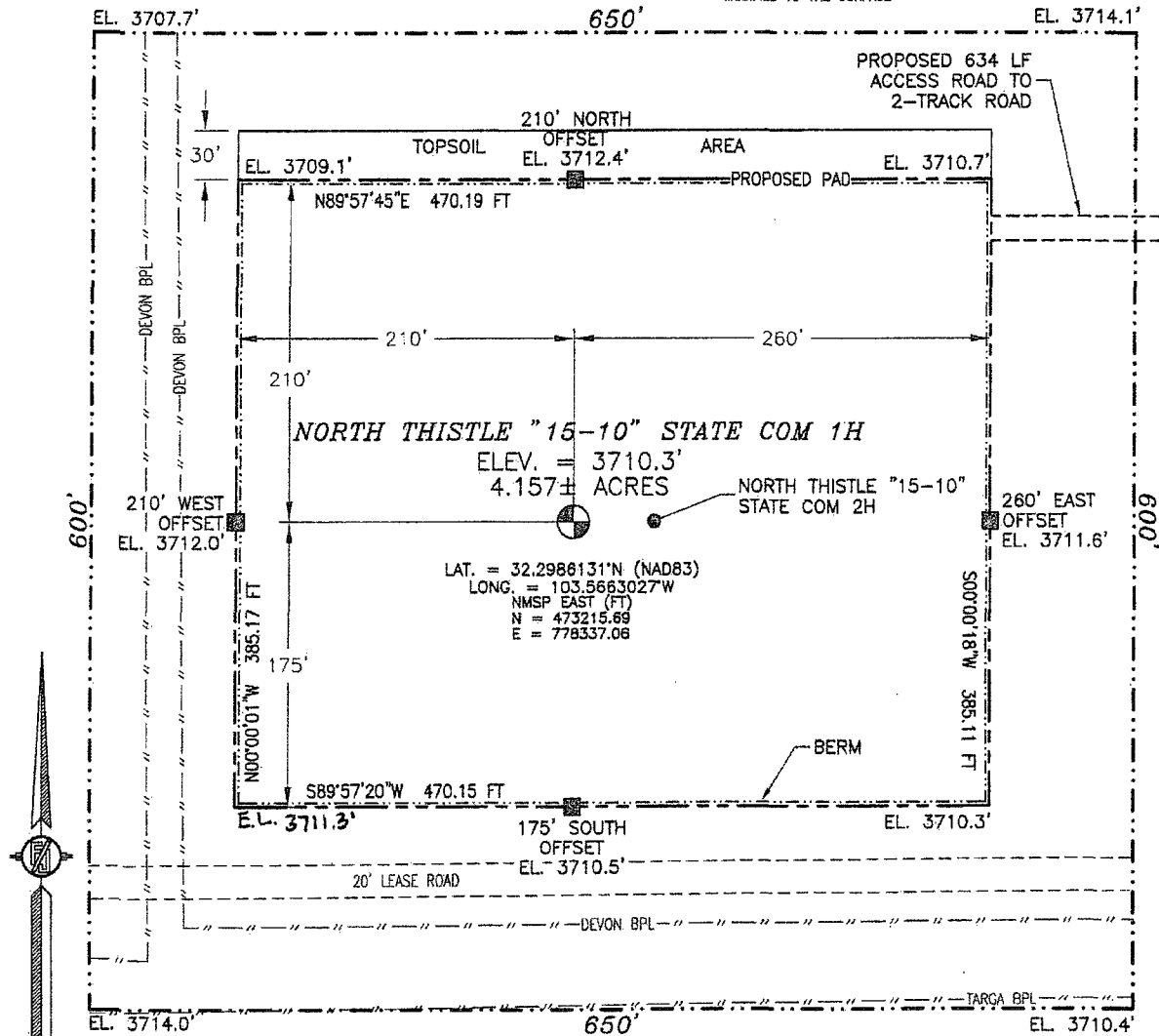
No allowable will be assigned to this completion until all interests have been consolidated or a non-standard unit has been approved by the division.

	<p><b><sup>16</sup> OPERATOR CERTIFICATION</b></p> <p>I hereby certify that the information contained herein is true and complete to the best of my knowledge and belief, and that this organization either owns a working interest or undivided mineral interest in the land including the proposed bottom hole location or has a right to drill this well at this location pursuant to a contract with an owner of such a mineral or working interest, or to a voluntary pooling agreement or a compulsory pooling order heretofore entered by the division.</p> <p><i>Linda Good</i> 5/18/2015 Signature Date</p> <p>Linda Good Printed Name</p> <p><i>linda.good@dmv.com</i> E-mail Address</p>
	<p><b><sup>17</sup> SURVEYOR CERTIFICATION</b></p> <p>I hereby certify that the well location shown on this plat was plotted from field notes of actual surveys made by me or under my supervision, and that the same is true and correct to the best of my belief.</p> <p>MAY 18 2015 Date of Survey</p> <p><i>Filimon P. Aramillo</i> Signature and Seal of Professional Surveyor</p> <p>Certificate Number: FILIMON P. ARAMILLO, PLS 12797 SURVEY NO. 3670A</p>

MAY 18 2015

SECTION 15, TOWNSHIP 23 SOUTH, RANGE 33 EAST, N.M.P.M.  
LEA COUNTY, STATE OF NEW MEXICO  
**SITE MAP**

NOTE: LATITUDE AND LONGITUDE COORDINATES ARE SHOWN USING THE NORTH AMERICAN DATUM OF 1983 (NAD83), LISTED NEW MEXICO STATE PLANE EAST COORDINATES ARE GRID (NAD83), BASIS OF BEARING AND DISTANCES USED ARE NEW MEXICO STATE PLANE EAST COORDINATES MODIFIED TO THE SURFACE



010 50 100 200

SCALE 1" = 100'

**DIRECTIONS TO LOCATION**

FROM THE INTERSECTION OF STATE HIGHWAY 128 AND CR 21 (DELAWARE BASIN ROAD) GO NORTH ON CR 21 APPROX. 6.1 MILES TO A LEASE ROAD ON LEFT (WEST), TURN WEST GO APPROX. 3.1 MILES TO A LEASE ROAD ON RIGHT (NORTH), TURN NORTH GO 0.1 MILE TO ROAD LATH ON LEFT (WEST) FOLLOW ROAD LATHS WEST APPROX. 634' TO THE NORTHEAST PAD CORNER FOR THIS LOCATION.

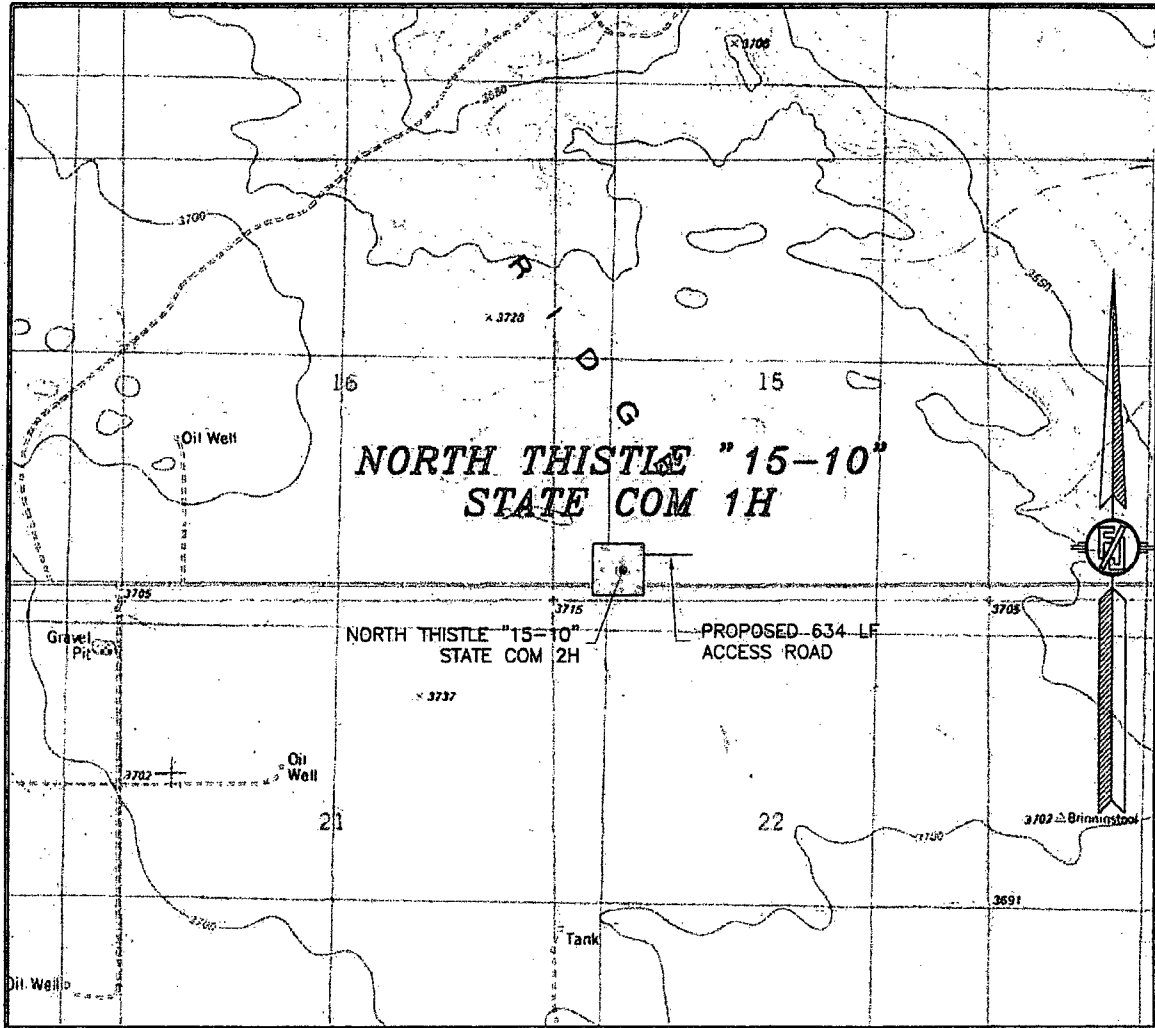
DEVON ENERGY PRODUCTION COMPANY, L.P.  
**NORTH THISTLE "15-10" STATE COM 1H**  
LOCATED 415 FT. FROM THE SOUTH LINE  
AND 760 FT. FROM THE WEST LINE OF  
SECTION 15, TOWNSHIP 23 SOUTH,  
RANGE 33 EAST, N.M.P.M.  
LEA COUNTY, STATE OF NEW MEXICO

MAY 1, 2015

SURVEY NO. 3670A

MADRON SURVEYING, INC. 301 SOUTH CANAL (575) 234-3341 CARLSBAD, NEW MEXICO

SECTION 15, TOWNSHIP 23 SOUTH, RANGE 33 EAST, N.M.P.M.  
LEA COUNTY, STATE OF NEW MEXICO  
LOCATION VERIFICATION MAP



USGS QUAD MAP:  
TIP TOP WELLS

NOT TO SCALE

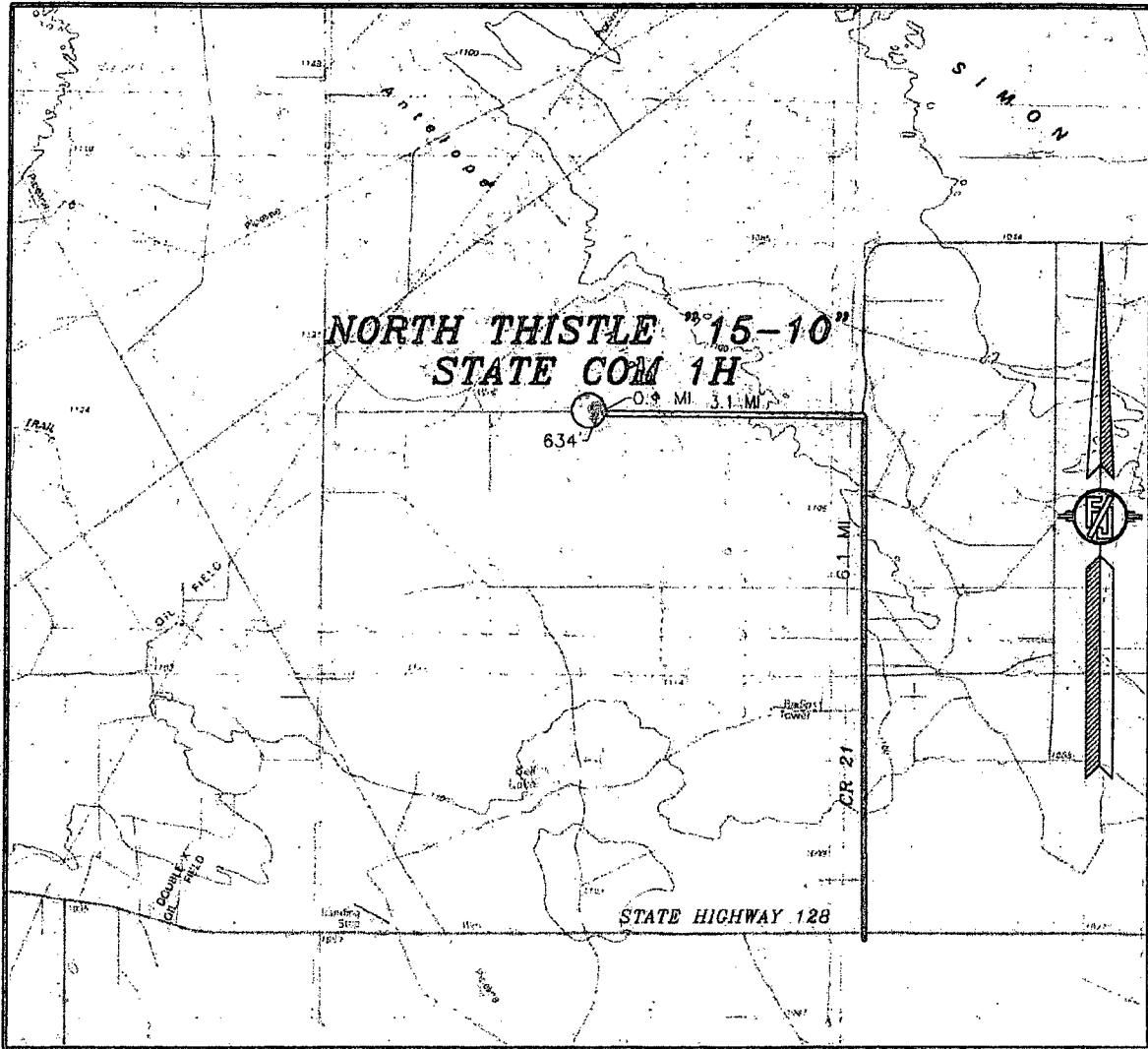
DEVON ENERGY PRODUCTION COMPANY, L.P.  
**NORTH THISTLE "15-10" STATE COM 1H**  
LOCATED 415 FT. FROM THE SOUTH LINE  
AND 760 FT. FROM THE WEST LINE OF  
SECTION 15, TOWNSHIP 23 SOUTH,  
RANGE 33 EAST, N.M.P.M.  
LEA COUNTY, STATE OF NEW MEXICO

MAY 1, 2015

SURVEY NO. 3670A

MADRON SURVEYING, INC. 301 SOUTH CANAL (575) 234-3341 CARLSBAD, NEW MEXICO

SECTION 15, TOWNSHIP 23 SOUTH, RANGE 33 EAST, N.M.P.M.  
LEA COUNTY, STATE OF NEW MEXICO  
VICINITY MAP



DISTANCES IN MILES

NOT TO SCALE

DEVON ENERGY PRODUCTION COMPANY, L.P.  
NORTH THISTLE "15-10" STATE COM 1H  
LOCATED 415 FT. FROM THE SOUTH LINE  
AND 760 FT. FROM THE WEST LINE OF  
SECTION 15, TOWNSHIP 23 SOUTH,  
RANGE 33 EAST, N.M.P.M.  
LEA COUNTY, STATE OF NEW MEXICO

DIRECTIONS TO LOCATION

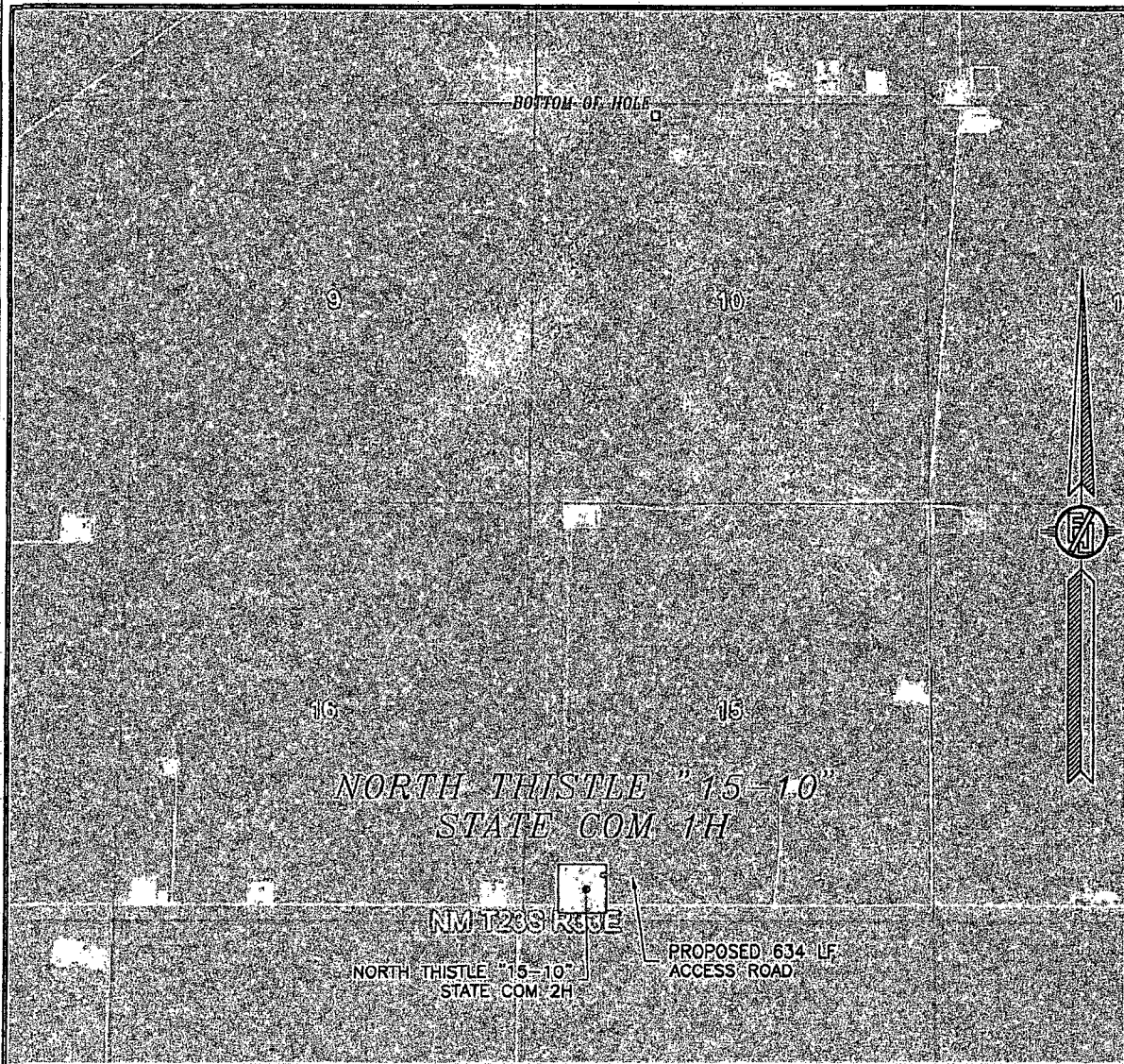
FROM THE INTERSECTION OF STATE HIGHWAY 128 AND CR 21  
(DELAWARE BASIN ROAD) GO NORTH ON CR 21 APPROX. 8.1 MILES  
TO A LEASE ROAD ON LEFT (WEST), TURN WEST GO APPROX. 3.1  
MILES TO A LEASE ROAD ON RIGHT (NORTH), TURN NORTH GO 0.1  
MILE TO ROAD LATH ON LEFT (WEST) FOLLOW ROAD LATHS WEST  
APPROX. 634' TO THE NORTHEAST PAD CORNER FOR THIS LOCATION.

MAY 1, 2015

SURVEY NO. 3670A

MADRON SURVEYING, INC. 301 SOUTH CANAL (575) 234-3341 CARLSBAD, NEW MEXICO

SECTION 15, TOWNSHIP 23 SOUTH, RANGE 33 EAST, N.M.P.M.  
LEA COUNTY, STATE OF NEW MEXICO  
**AERIAL PHOTO**



NOT TO SCALE  
AERIAL PHOTO:  
GOOGLE EARTH  
FEBRUARY 2014

DEVON ENERGY PRODUCTION COMPANY, L.P.  
**NORTH THISTLE "15-10" STATE COM 1H**  
LOCATED 415 FT. FROM THE SOUTH LINE  
AND 760 FT. FROM THE WEST LINE OF  
SECTION 15, TOWNSHIP 23 SOUTH,  
RANGE 33 EAST, N.M.P.M.  
LEA COUNTY, STATE OF NEW MEXICO

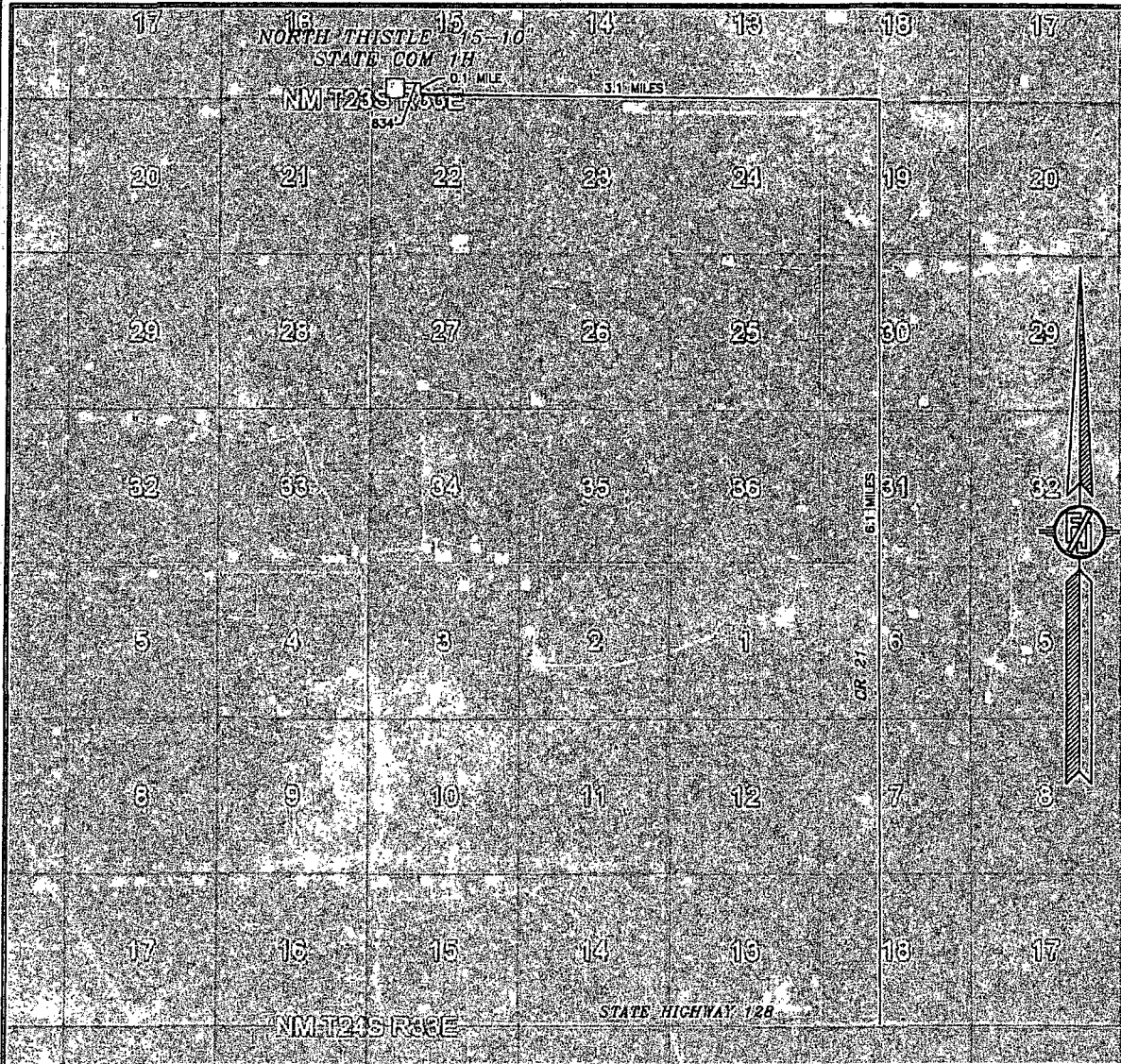
MAY 1, 2015

SURVEY NO. 3670A

MADRON SURVEYING, INC. 301 SOUTH CANAL CARLSBAD, NEW MEXICO  
(575) 234-3341



SECTION 15, TOWNSHIP 23 SOUTH, RANGE 33 EAST, N.M.P.M.  
LEA COUNTY, STATE OF NEW MEXICO  
ACCESS AERIAL ROUTE MAP



NOT TO SCALE  
AERIAL PHOTO:  
GOOGLE EARTH  
FEBRUARY 2014

DEVON ENERGY PRODUCTION COMPANY, L.P.  
NORTH THISTLE "15-10" STATE COM 1H  
LOCATED 415 FT. FROM THE SOUTH LINE  
AND 760 FT. FROM THE WEST LINE OF  
SECTION 15, TOWNSHIP 23 SOUTH,  
RANGE 33 EAST, N.M.P.M.  
LEA COUNTY, STATE OF NEW MEXICO

MAY 1, 2015

SURVEY NO. 3670A

MADRON SURVEYING, INC. 301 SOUTH CANAL (575) 234-3341 CARLSBAD, NEW MEXICO