

District I
1625 N. French Dr., Hobbs, NM 88240
Phone: (505) 393-6161 Fax: (505) 393-0720
District II
311 S. First St., Artesia, NM 88210
Phone: (505) 745-1283 Fax: (505) 748-0720
District III
1000 Rio Brazos Road, Aztec, NM 87410
Phone: (505) 334-6178 Fax: (505) 334-6170
District IV
1220 S. St. Francis Dr., Santa Fe, NM 87505
Phone: (505) 476-3460 Fax: (505) 476-3462

State of New Mexico
Energy, Minerals & Natural Resources Department
OIL CONSERVATION DIVISION
1220 South St. Francis Dr.
Santa Fe, NM 87505

Form C-102
Revised August 1, 2011
Submit one copy to appropriate
District Office
☐ AMENDED REPORT

MAY 18 2015

WELL LOCATION AND ACREAGE DEDICATION PLAN

¹ API Number 30-025-42562	² Pool Code 46310	³ Pool Name MIDWAY; Bona Springs
⁴ Property Code 314808	⁵ Property Name EDEL-WEISSE 28-21 STATE COM	
⁶ OGRID No. 6137	⁷ Operator Name DEVON ENERGY PRODUCTION COMPANY, L.P.	
		⁸ Well Number 1H
		⁹ Elevation 3754.4

¹⁰ Surface Location

UL or lot no.	Section	Township	Range	Lot Idn	Feet from the	North/South line	Feet from the	East/West line	County
E	28	17 S	37 E		2440	NORTH	400	WEST	LEA

¹¹ Bottom Hole Location If Different From Surface

UL or lot no.	Section	Township	Range	Lot Idn	Feet from the	North/South line	Feet from the	East/West line	County
D	21	17 S	37 E		330	NORTH	400	WEST	LEA

¹² Dedicated Acres	¹³ Joint or Infill	¹⁴ Consolidation Code	¹⁵ Order No.
240.00			

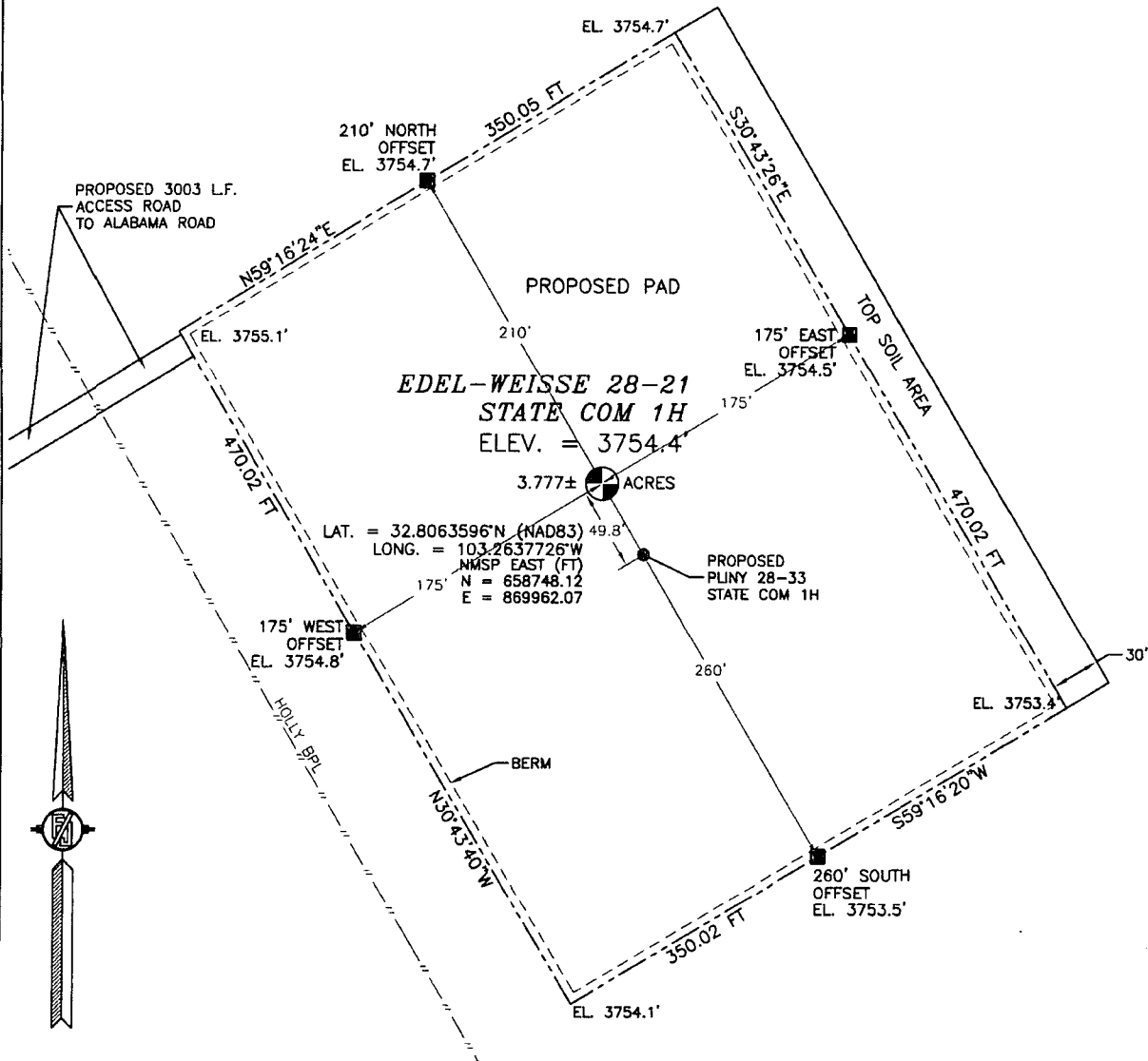
No allowable will be assigned to this completion until all interests have been consolidated or a non-standard unit has been approved by the division.

<p>Lease Lines</p> <p>NW CORNER SEC. 21 LAT. = 32.8276166°N LONG. = 103.2651231°W NMSP EAST (FT) N = 666478.13 E = 869468.98</p> <p>W/4 CORNER SEC. 21 LAT. = 32.8203419°N LONG. = 103.2651015°W NMSP EAST (FT) N = 663831.34 E = 869502.34</p> <p>Completion Interval</p> <p>SECTION CORNER LAT. = 32.8130672°N LONG. = 103.2650800°W NMSP EAST (FT) N = 661184.58 E = 869535.7</p> <p>W/4 CORNER SEC. 28 LAT. = 32.8058062°N LONG. = 103.2650738°W NMSP EAST (FT) N = 658542.75 E = 869564.30</p> <p>SW CORNER SEC. 28 LAT. = 32.7985352°N LONG. = 103.2650577°W NMSP EAST (FT) N = 655897.30 E = 869595.97</p>		<p>Project Interval</p> <p>SE CORNER SEC. 21 LAT. = 32.8275828°N LONG. = 103.2565129°W NMSP EAST (FT) N = 666492.67 E = 872114.09</p> <p>E/4 CORNER SEC. 21 LAT. = 32.8276163°N LONG. = 103.2479049°W NMSP EAST (FT) N = 666531.91 E = 874758.28</p> <p>E/4 CORNER SEC. 21 LAT. = 32.8202921°N LONG. = 103.2478978°W NMSP EAST (FT) N = 663867.06 E = 874787.84</p> <p>SECTION CORNER LAT. = 32.8130313°N LONG. = 103.2478829°W NMSP EAST (FT) N = 661225.34 E = 874819.53</p> <p>E/4 CORNER SEC. 28 LAT. = 32.8057578°N LONG. = 103.2478745°W NMSP EAST (FT) N = 658578.95 E = 874849.36</p> <p>SE CORNER SEC. 28 LAT. = 32.7984649°N LONG. = 103.2477924°W NMSP EAST (FT) N = 655933.02 E = 874901.68</p>	
<p>Diagram Description:</p> <p>Diagram showing well location and acreage dedication. Includes sections 21 and 28, quarter corners, and surface location. A note states: "NOTE: LATITUDE AND LONGITUDE COORDINATES ARE SHOWN USING THE NORTH AMERICAN DATUM OF 1983 (NAD83). LISTED NEW MEXICO STATE PLANE EAST COORDINATES ARE GRID (NAD83). BASIS OF BEARING AND DISTANCES USED ARE NEW MEXICO STATE PLANE EAST COORDINATES MODIFIED TO THE SURFACE."</p> <p>SEC. 21 QUARTER CORNER SCALED</p> <p>SEC. 28 NM VO-9143</p> <p>SURFACE LOCATION</p> <p>EDEL-WEISSE 28-21 STATE COM 1H ELEV. = 3754.4' LAT. = 32.8063595°N (NAD83) LONG. = 103.2637726°W NMSP EAST (FT) N = 658748.12 E = 869962.07</p> <p>S/4 CORNER SEC. 28 SCALED</p>		<p>17 OPERATOR CERTIFICATION</p> <p>I hereby certify that the information contained herein is true and complete to the best of my knowledge and belief, and that this organization either owns a working interest or unleased mineral interest in the land including the proposed bottom hole location or has a right to drill this well at this location pursuant to a contract with an owner of such a mineral or working interest, or to a voluntary pooling agreement or a compulsory pooling order heretofore entered by the division.</p> <p>Signature: <i>Tami Laird</i> Date: 5/5/15</p> <p>Printed Name: Tami Laird, Regulatory Compliance Professional</p> <p>E-mail Address: tami.laird@dmn.com</p>	
<p>18 SURVEYOR CERTIFICATION</p> <p>I hereby certify that the well location shown on this plan was plotted from field notes of actual surveys made by me or under my supervision, and that the same is true and correct to the best of my belief.</p> <p>Signature and Seal of Professional Surveyor: <i>[Signature]</i></p> <p>Certificate Number: FILMON F. JARAMILLO, PLS 12797</p> <p>SURVEY NO. 3590</p>		<p>NEW MEXICO FEBRUARY 13, 2015 12797</p>	

MAY 18 2015

SECTION 28, TOWNSHIP 17 SOUTH, RANGE 37 EAST, N.M.P.M.
LEA COUNTY, STATE OF NEW MEXICO
SITE MAP

NOTE: LATITUDE AND LONGITUDE COORDINATES ARE SHOWN USING THE NORTH AMERICAN DATUM OF 1983 (NAD83). LISTED NEW MEXICO STATE PLANE EAST COORDINATES ARE GRID (NAD83). BASIS OF BEARING AND DISTANCES USED ARE NEW MEXICO STATE PLANE EAST COORDINATES MODIFIED TO THE SURFACE.



010 50 100 200

SCALE 1" = 100'

DIRECTIONS TO LOCATION

FROM THE INTERSECTION OF STATE HWY 18 AND COUNTY ROAD ALABAMA STREET GO WEST ON ALABAMA STREET 2.74 MILES ABOUT A MILE PAST END OF PAVEMENT TO PROPOSED ROAD ON RIGHT GO NORTH ON PROPOSED ROAD 3003 LF (0.56 MILES) TO NORTHWEST CORNER OF PROPOSED PAD

DEVON ENERGY PRODUCTION COMPANY, L.P.
EDEL-WEISSE 28-21 STATE COM 1H
LOCATED 2440 FT. FROM THE NORTH LINE
AND 400 FT. FROM THE WEST LINE OF
SECTION 28, TOWNSHIP 17 SOUTH,
RANGE 37 EAST, N.M.P.M.
LEA COUNTY, STATE OF NEW MEXICO

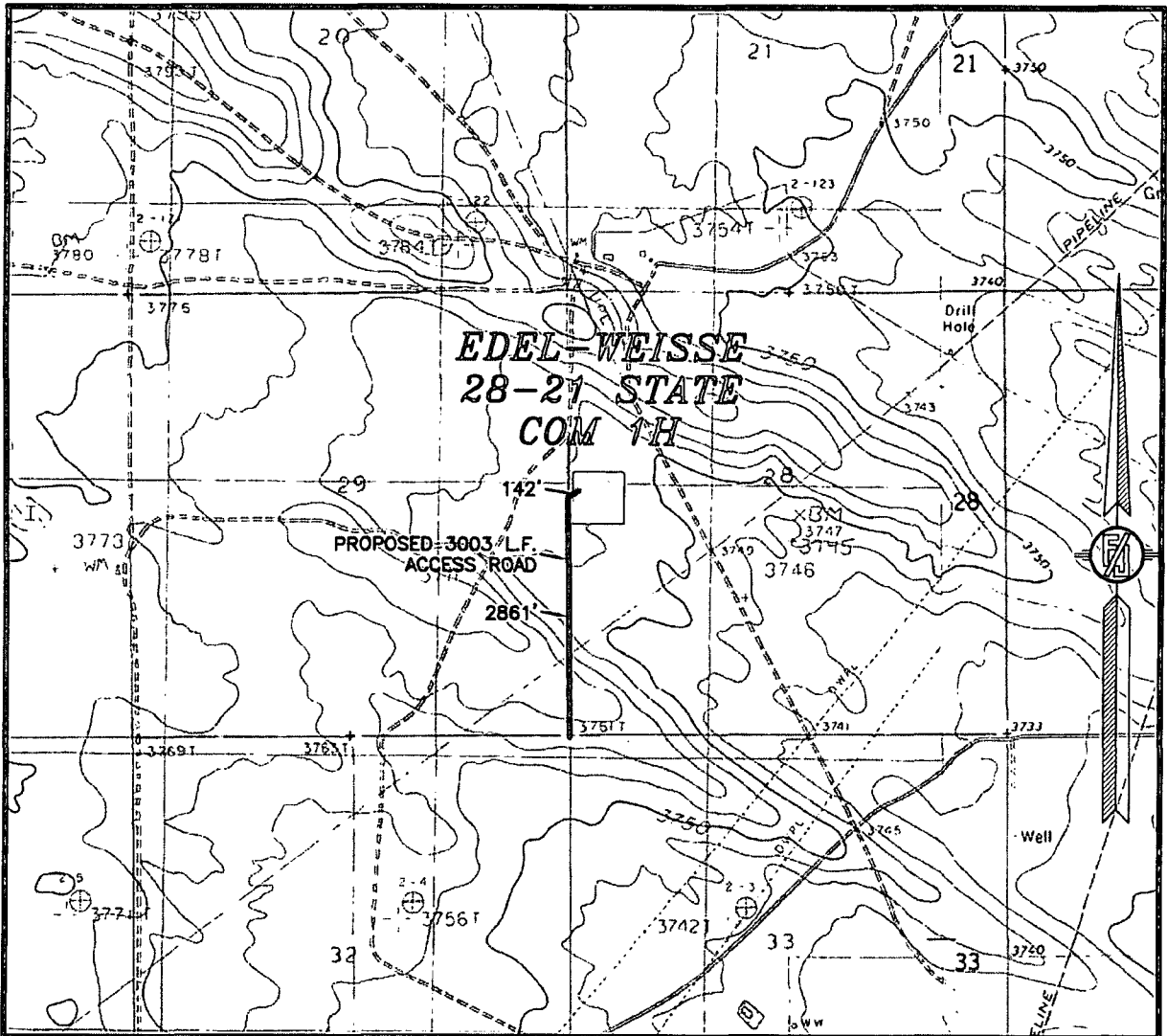
FEBRUARY 13, 2015

SURVEY NO. 3590

MADRON SURVEYING, INC. 301 SOUTH CANAL CARLSBAD, NEW MEXICO
(575) 234-3341

301 SOUTH CANAL
(575) 234-3341

SECTION 28, TOWNSHIP 17 SOUTH, RANGE 37 EAST, N.M.P.M.
LEA COUNTY, STATE OF NEW MEXICO
LOCATION VERIFICATION MAP



USGS QUAD MAP:
LOVINGTON SE

NOT TO SCALE

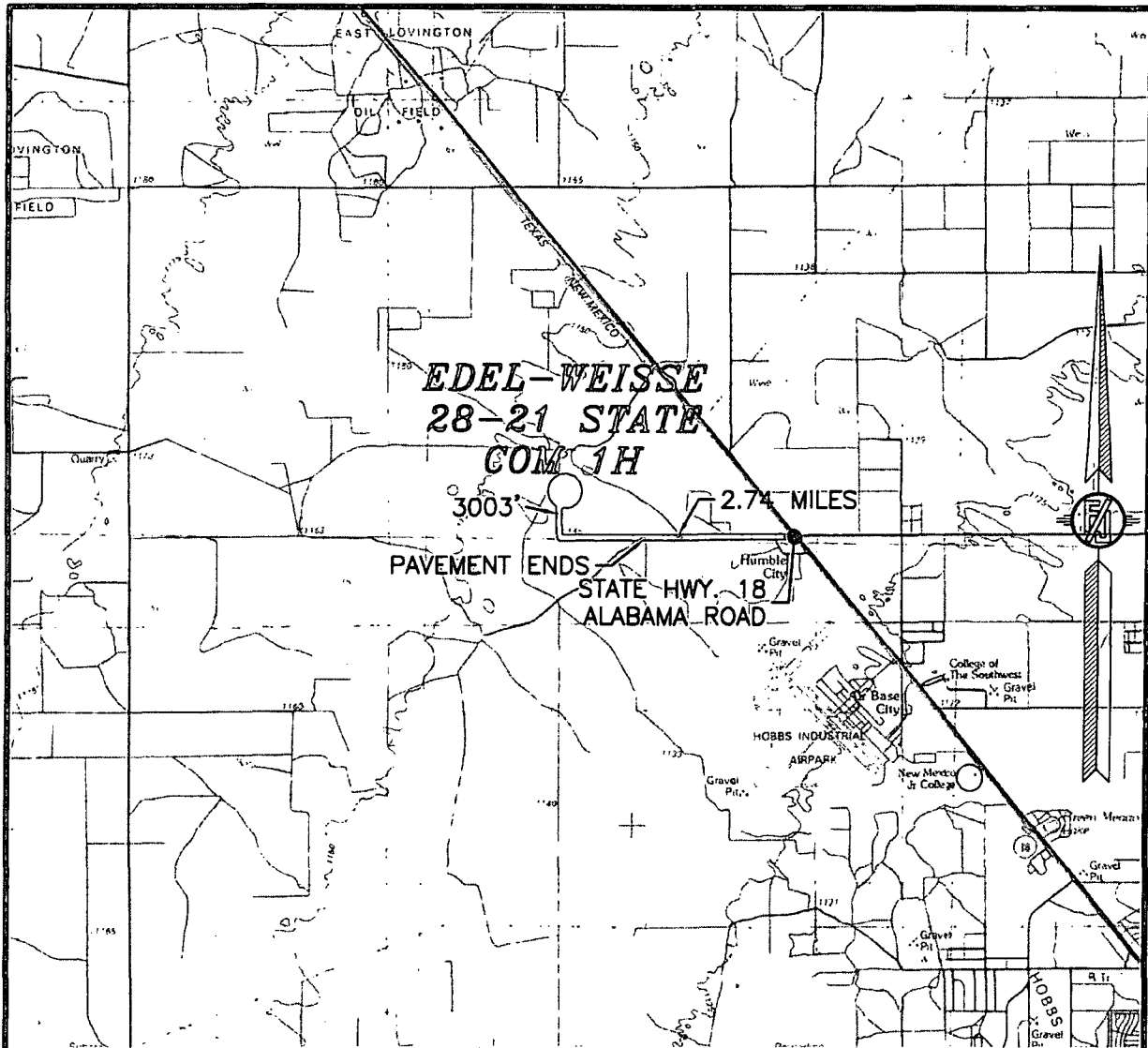
DEVON ENERGY PRODUCTION COMPANY, L.P.
EDEL-WEISSE 28-21 STATE COM 1H
LOCATED 2440 FT. FROM THE NORTH LINE
AND 400 FT. FROM THE WEST LINE OF
SECTION 28, TOWNSHIP 17 SOUTH,
RANGE 37 EAST, N.M.P.M.
LEA COUNTY, STATE OF NEW MEXICO

FEBRUARY 13, 2015

SURVEY NO. 3590

MADRON SURVEYING, INC. 301 SOUTH CANAL (575) 234-3341 CARLSBAD, NEW MEXICO

SECTION 28, TOWNSHIP 17 SOUTH, RANGE 37 EAST, N.M.P.M.
LEA COUNTY, STATE OF NEW MEXICO
VICINITY MAP



DISTANCES IN MILES

NOT TO SCALE

DIRECTIONS TO LOCATION

FROM THE INTERSECTION OF STATE HWY 18 AND COUNTY ROAD ALABAMA STREET GO WEST ON ALABAMA STREET 2.74 MILES ABOUT A MILE PAST END OF PAVEMENT TO PROPOSED ROAD ON RIGHT GO NORTH ON PROPOSED ROAD 3003 LF (0.56 MILES) TO NORTHWEST CORNER OF PROPOSED PAD

DEVON ENERGY PRODUCTION COMPANY, L.P.

EDEL-WEISSE 28-21 STATE COM 1H

LOCATED 2440 FT. FROM THE NORTH LINE

AND 400 FT. FROM THE WEST LINE OF

SECTION 28, TOWNSHIP 17 SOUTH,

RANGE 37 EAST, N.M.P.M.

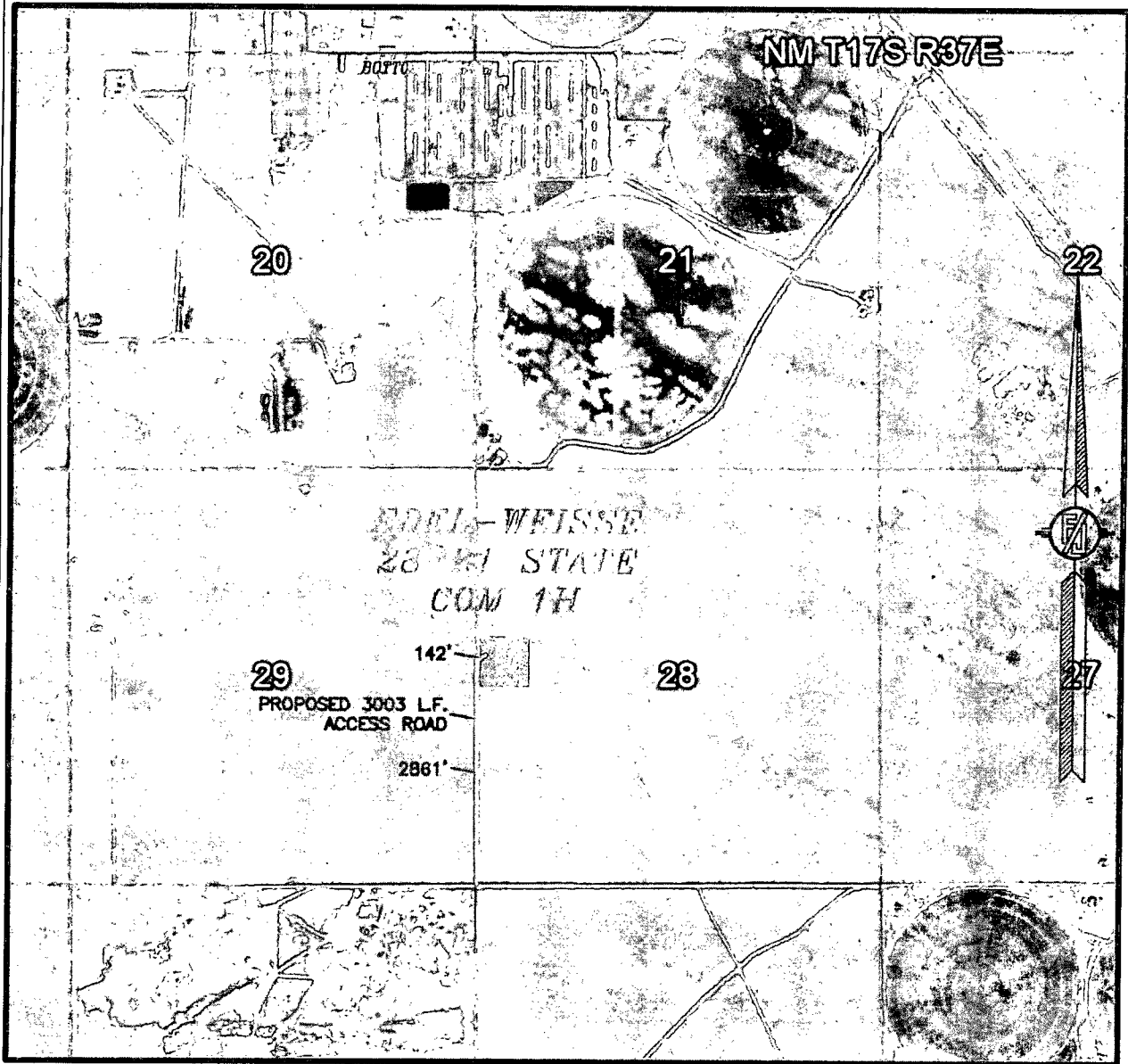
LEA COUNTY, STATE OF NEW MEXICO

FEBRUARY 13, 2015

SURVEY NO. 3590

MADRON SURVEYING, INC. 301 SOUTH CANAL (575) 234-3341 CARLSBAD, NEW MEXICO

SECTION 28, TOWNSHIP 17 SOUTH, RANGE 37 EAST, N.M.P.M.
LEA COUNTY, STATE OF NEW MEXICO
AERIAL PHOTO



NOT TO SCALE
AERIAL PHOTO:
GOOGLE EARTH
FEB. 2014

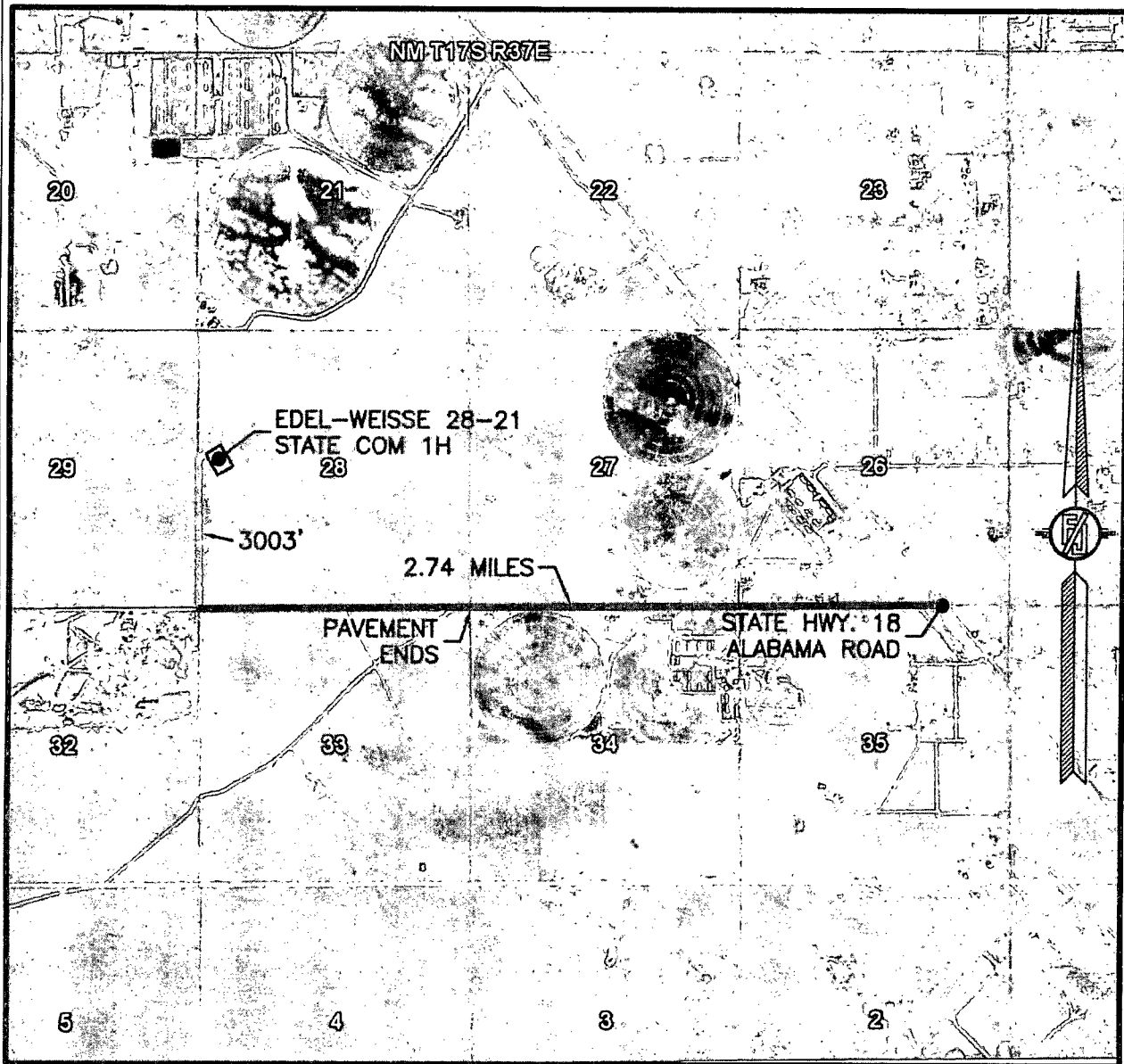
DEVON ENERGY PRODUCTION COMPANY, L.P.
EDEL-WEISSE 28-21 STATE COM 1H
LOCATED 2440 FT. FROM THE NORTH LINE
AND 400 FT. FROM THE WEST LINE OF
SECTION 28, TOWNSHIP 17 SOUTH,
RANGE 37 EAST, N.M.P.M.
LEA COUNTY, STATE OF NEW MEXICO

FEBRUARY 13, 2015

SURVEY NO. 3590

MADRON SURVEYING, INC. 301 SOUTH CANAL (575) 234-3341 CARLSBAD, NEW MEXICO

SECTION 28, TOWNSHIP 17 SOUTH, RANGE 37 EAST, N.M.P.M.
LEA COUNTY, STATE OF NEW MEXICO
AERIAL ACCESS ROUTE MAP



NOT TO SCALE
AERIAL PHOTO:
GOOGLE EARTH
FEB. 2014

DEVON ENERGY PRODUCTION COMPANY, L.P.
EDEL-WEISSE 28-21 STATE COM 1H
LOCATED 2440 FT. FROM THE NORTH LINE
AND 400 FT. FROM THE WEST LINE OF
SECTION 28, TOWNSHIP 17 SOUTH,
RANGE 37 EAST, N.M.P.M.
LEA COUNTY, STATE OF NEW MEXICO

FEBRUARY 13, 2015

SURVEY NO. 3590

MADRON SURVEYING, INC. 301 SOUTH CANAL (575) 234-3341 CARLSBAD, NEW MEXICO