

District I
1625 N. French Dr., Hobbs, NM 88240
Phone: (575) 393-6161 Fax: (575) 393-0720
District II
811 S. First St., Artesia, NM 88210
Phone: (575) 748-1283 Fax: (575) 748-9720
District III
1000 Rio Brazos Road, Aztec, NM 87410
Phone: (505) 334-6179 Fax: (505) 334-6170
District IV
1220 S. St. Francis Dr., Santa Fe, NM 87505
Phone: (505) 476-3460 Fax: (505) 476-3462

State of New Mexico
Energy, Minerals & Natural Resources Department
OIL CONSERVATION DIVISION **HOBBS OCD**
1220 South St. Francis Dr.
Santa Fe, NM 87505

Form C-102
Revised August 1, 2011
Submit one copy to appropriate
District Office

MAY 18 2015

☐ AMENDED REPORT

WELL LOCATION AND ACREAGE DEDICATION

¹ API Number 30-025-42564	² Pool Code 31705	³ Pool Name HOBBS CHANNEL, Bone Spring
⁴ Property Code 314811	⁵ Property Name SCHANKBEIR 20	
⁷ OGRID No. 6137	⁸ Operator Name DEVON ENERGY PRODUCTION COMPANY, L.P.	⁶ Well Number 1H
		⁹ Elevation 3692.1

¹⁰ Surface Location

UL or lot no.	Section	Township	Range	Lot Idn	Feet from the	North/South line	Feet from the	East/West line	County
M	20	17 S	38 E		160	SOUTH	1105	WEST	LEA

¹¹ Bottom Hole Location If Different From Surface

UL or lot no.	Section	Township	Range	Lot Idn	Feet from the	North/South line	Feet from the	East/West line	County
D	20	17 S	38 E		330	NORTH	660	WEST	LEA

¹² Dedicated Acres	¹³ Joint or Infill	¹⁴ Consolidation Code	¹⁵ Order No.

No allowable will be assigned to this completion until all interests have been consolidated or a non-standard unit has been approved by the division.

<p>17 OPERATOR CERTIFICATION I hereby certify that the information contained herein is true and complete to the best of my knowledge and belief, and that this organization either owns a working interest or unleased mineral interest in the land including the proposed bottom hole location or has a right to drill this well at this location pursuant to a contract with an owner of such a mineral or working interest, or to a voluntary pooling agreement or a compulsory pooling order heretofore entered by the division.</p> <p><i>Tami Laird</i> 5/5/15 Signature Date Tami Laird, Regulatory Compliance Professional Printed Name tami.laird@dmn.com E-mail Address</p>		<p>18 SURVEYOR CERTIFICATION I hereby certify that the well location shown on this plat was plotted from field notes of actual surveys made by me or under my supervision, and that the same is true and correct to the best of my belief.</p> <p>MARCH 17, 2015 Date of Survey <i>Filimon E. Taramillo</i> Signature and Seal of Professional Surveyor Certificate Number: FILIMON E. TARAMILLO, PLS 12797 SURVEY NO. 3592A</p>	
--	--	---	--

19 WELL LOCATION AND ACREAGE DEDICATION

N89°14'43"E 2638.76 FT N89°14'40"E 2636.85 FT

N/4 CORNER SEC. 20 SCALED NE CORNER SEC. 20
LAT. = 32.8274938°N
LONG. = 103.1521618°W
NMSP EAST (FT)
N = 666768.56
E = 901098.74

BOTTOM OF HOLE
LAT. = 32.8265595°N
LONG. = 103.1771839°W
NMSP EAST (FT)
N = 666377.80
E = 896487.69

Project Area

NOTE: LATITUDE AND LONGITUDE COORDINATES ARE SHOWN USING THE NORTH AMERICAN DATUM OF 1983 (NAD83). LISTED NEW MEXICO STATE PLANE EAST COORDINATES ARE GRID (NAD83). BASIS OF BEARING AND DISTANCES USED ARE NEW MEXICO STATE PLANE EAST COORDINATES MODIFIED TO THE SURFACE.

W/4 CORNER SEC. 20
LAT. = 32.8201978°N
LONG. = 103.1793331°W
NMSP EAST (FT)
N = 664055.90
E = 895852.73

Completion Interval

Lease Lines

SCHANKBEIR "20" 1H
ELEV. = 3692.1'
LAT. = 32.8133738°N (NAD83)
LONG. = 103.1757371°W
NMSP EAST (FT)
N = 661585.11
E = 896984.70

SE CORNER SEC. 20
LAT. = 32.8129403°N
LONG. = 103.1621378°W
NMSP EAST (FT)
N = 661473.41
E = 901164.78

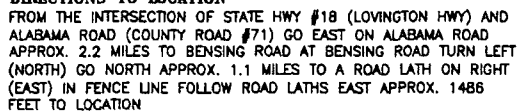
S/4 CORNER SEC. 20 SCALED

SURFACE LOCATION
1105'

S89°20'18"W 2642.07 FT S89°20'18"W 2642.07 FT

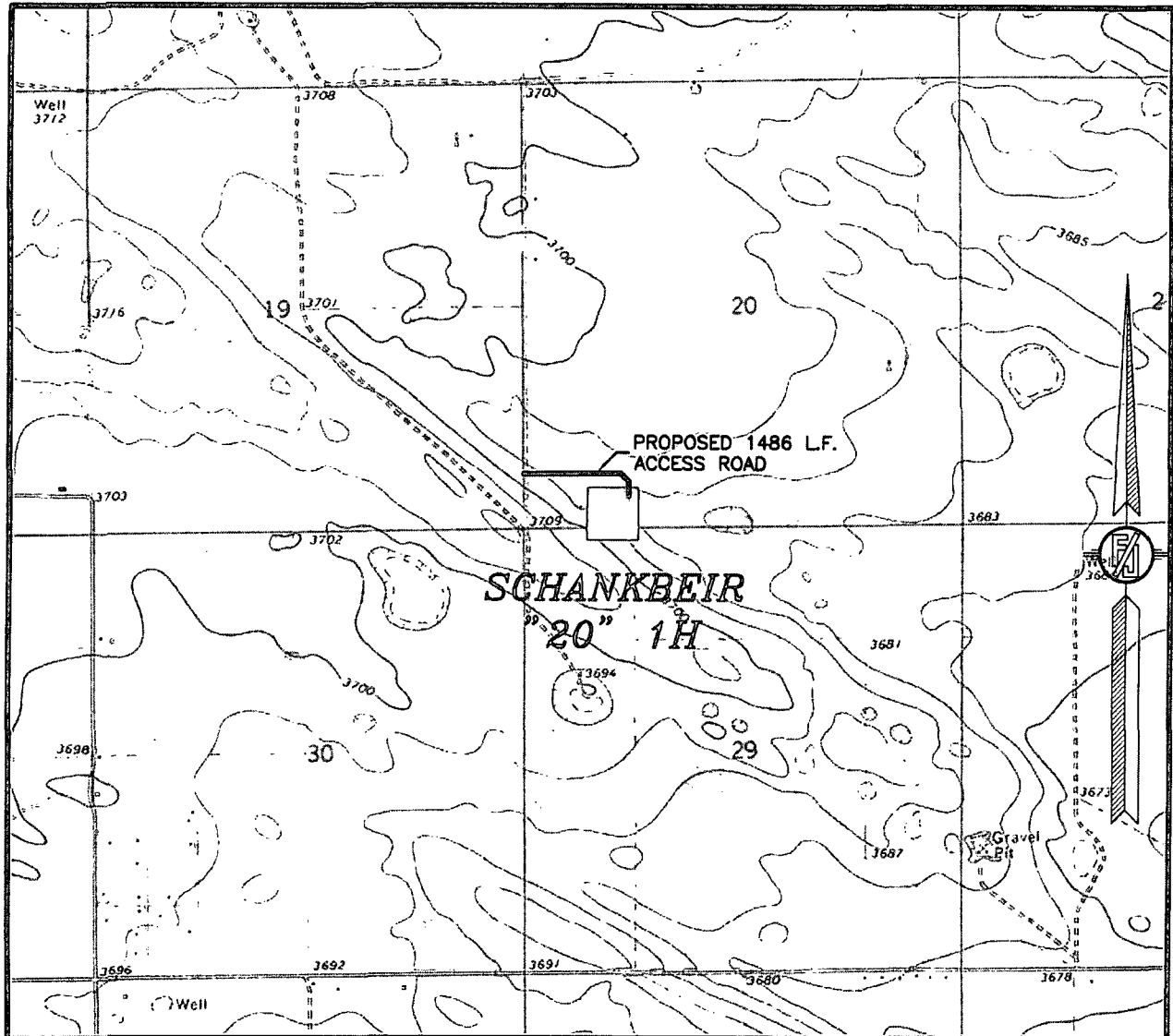
MAY 18 2015

NOTE: LATITUDE AND LONGITUDE COORDINATES ARE SHOWN USING THE NORTH AMERICAN DATUM OF 1983 (NAD83). LISTED NEW MEXICO STATE PLANE EAST COORDINATES ARE GRID (NAD83). BASIS OF BEARING AND DISTANCES USED ARE NEW MEXICO STATE PLANE EAST COORDINATES MODIFIED TO THE SURFACE.

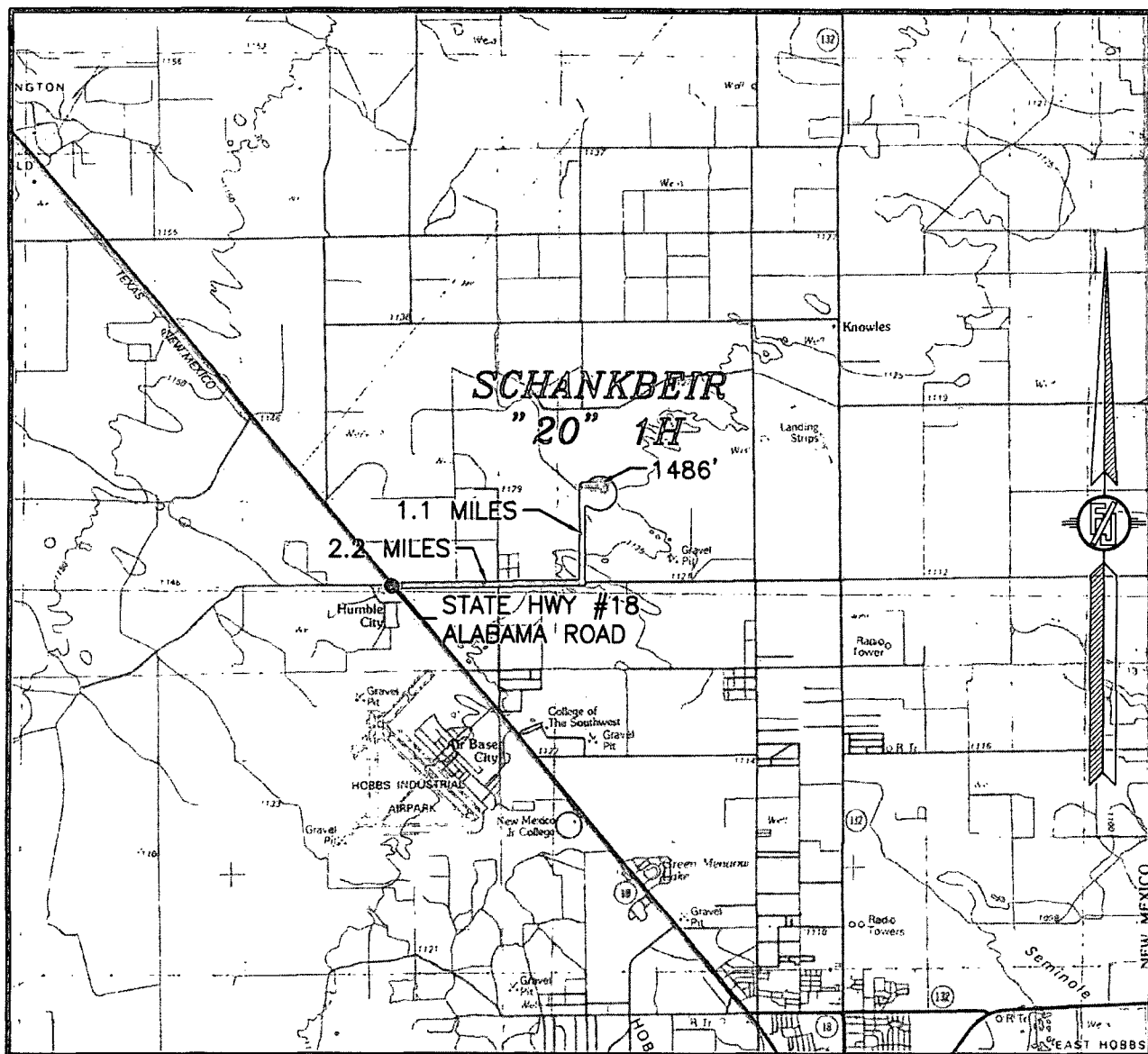


MADRON SURVEYING, INC. 301 SOUTH CANAL CARLSBAD, NEW MEXICO
(575) 234-3341

SECTION 20, TOWNSHIP 17 SOUTH, RANGE 38 EAST, N.M.P.M.
LEA COUNTY, STATE OF NEW MEXICO
LOCATION VERIFICATION MAP



SECTION 20, TOWNSHIP 17 SOUTH, RANGE 38 EAST, N.M.P.M.
LEA COUNTY, STATE OF NEW MEXICO
VICINITY MAP



DISTANCES IN MILES

NOT TO SCALE

DIRECTIONS TO LOCATION

FROM THE INTERSECTION OF STATE HWY #18 (LOVINGTON HWY) AND ALABAMA ROAD (COUNTY ROAD #71) GO EAST ON ALABAMA ROAD APPROX. 2.2 MILES TO BENSING ROAD AT BENSING ROAD TURN LEFT (NORTH) GO NORTH APPROX. 1.1 MILES TO A ROAD LATH ON RIGHT (EAST) IN FENCE LINE FOLLOW ROAD LATHS EAST APPROX. 1486 FEET TO LOCATION

DEVON ENERGY PRODUCTION COMPANY, L.P.

SCHANKBEIR "20" 1H

LOCATED 160 FT. FROM THE SOUTH LINE
AND 1105 FT. FROM THE WEST LINE OF
SECTION 20, TOWNSHIP 17 SOUTH,
RANGE 38 EAST, N.M.P.M.
LEA COUNTY, STATE OF NEW MEXICO

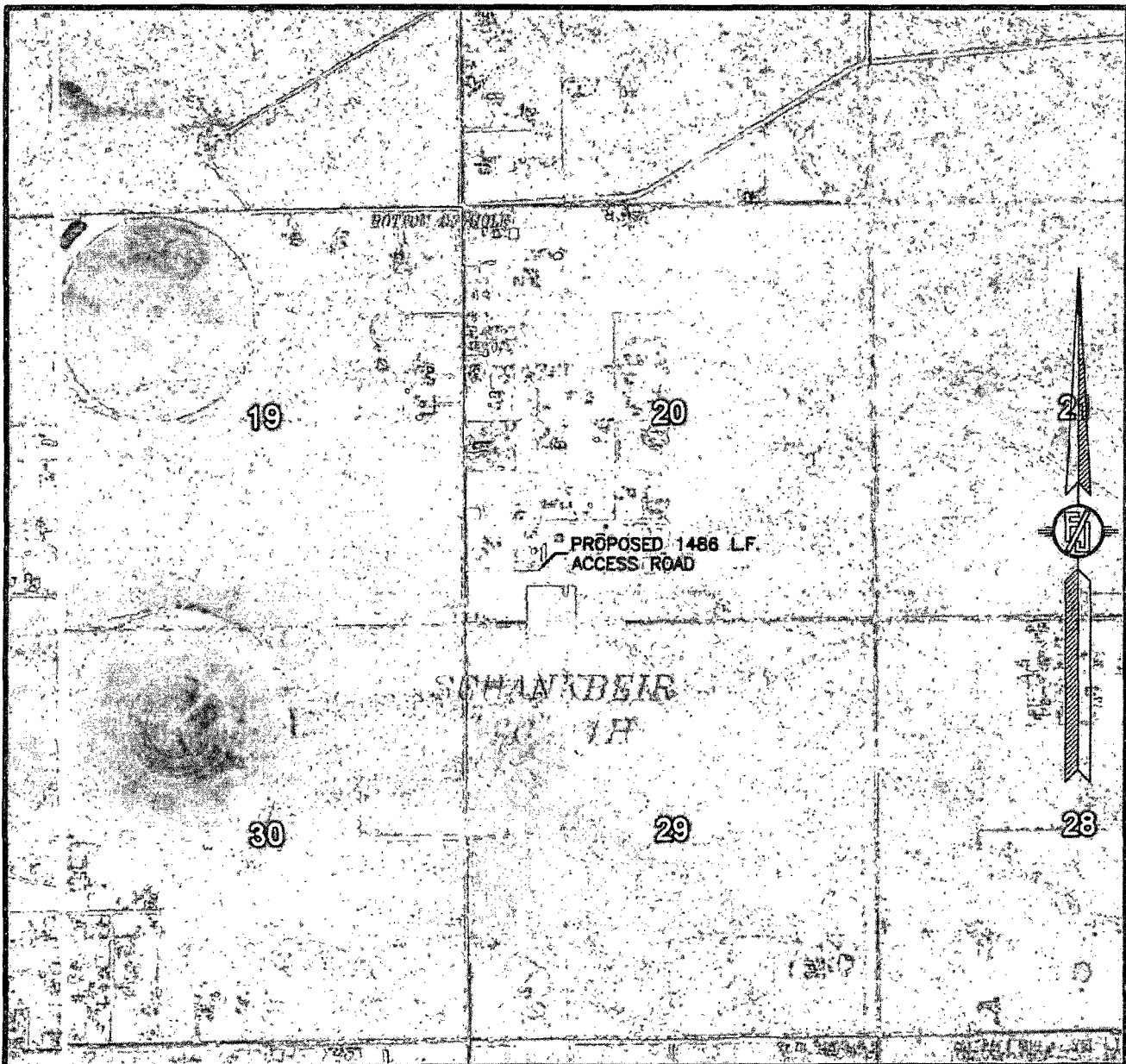
MARCH 17, 2015

SURVEY NO. 3592A

MADRON SURVEYING, INC. 301 SOUTH CANAL (575) 234-3341

CARLSBAD, NEW MEXICO

SECTION 20, TOWNSHIP 17 SOUTH, RANGE 38 EAST, N.M.P.M.
LEA COUNTY, STATE OF NEW MEXICO
AERIAL PHOTO



NOT TO SCALE
AERIAL PHOTO:
GOOGLE EARTH
FEB. 2014

DEVON ENERGY PRODUCTION COMPANY, L.P.

SCHANKBEIR "20" 1H

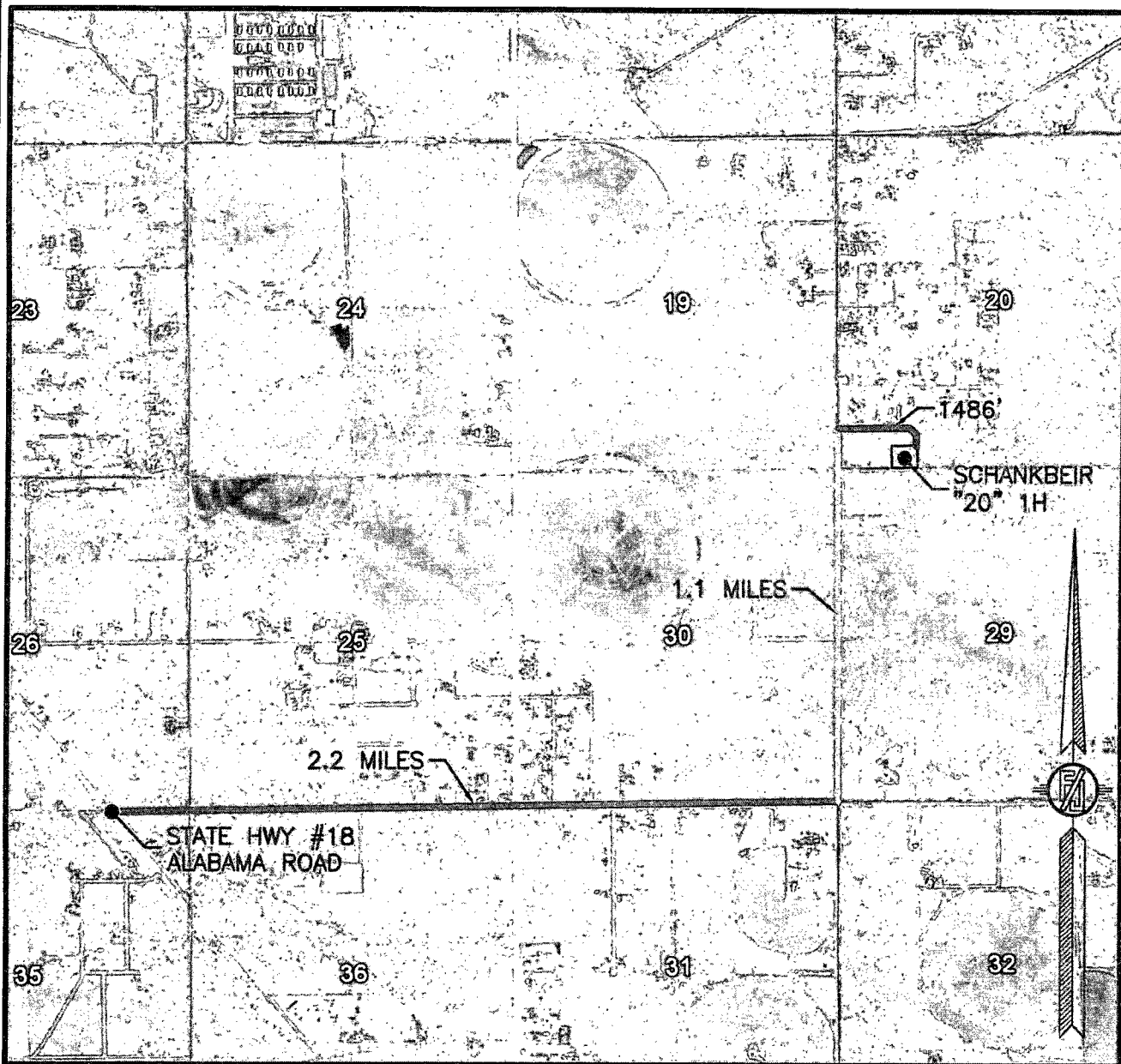
LOCATED 160 FT. FROM THE SOUTH LINE
AND 1105 FT. FROM THE WEST LINE OF
SECTION 20, TOWNSHIP 17 SOUTH,
RANGE 38 EAST, N.M.P.M.
LEA COUNTY, STATE OF NEW MEXICO

MARCH 17, 2015

SURVEY NO. 3592A

MADRON SURVEYING, INC. 301 SOUTH CANAL (575) 234-3341 CARLSBAD, NEW MEXICO

SECTION 20, TOWNSHIP 17 SOUTH, RANGE 38 EAST, N.M.P.M.
LEA COUNTY, STATE OF NEW MEXICO
AERIAL ACCESS ROUTE MAP



NOT TO SCALE
AERIAL PHOTO:
GOOGLE EARTH
FEB. 2014

DEVON ENERGY PRODUCTION COMPANY, L.P.
SCHANKBEIR "20" 1H

LOCATED 160 FT. FROM THE SOUTH LINE
AND 1105 FT. FROM THE WEST LINE OF
SECTION 20, TOWNSHIP 17 SOUTH,
RANGE 38 EAST, N.M.P.M.
LEA COUNTY, STATE OF NEW MEXICO

MARCH 17, 2015

SURVEY NO. 3592A

MADRON SURVEYING, INC. 301 SOUTH CANAL (575) 234-3341 CARLSBAD, NEW MEXICO