

DISTRICT I  
1625 N. French Dr., Hobbs, NM 88240  
Phone: (575) 393-6161 Fax: (575) 393-0720

DISTRICT II  
811 S. First St., Artesia, NM 88210  
Phone: (575) 748-1283 Fax: (575) 748-9720

DISTRICT III  
1000 Rio Brazos Road, Aztec, NM 87410  
Phone: (505) 334-6178 Fax: (505) 334-6170

DISTRICT IV  
1220 S. St. Francis Dr., Santa Fe, NM 87505  
Phone: (505) 476-3460 Fax: (505) 476-3462

State of New Mexico  
Energy, Minerals & Natural Resources Department  
OIL CONSERVATION DIVISION  
1220 South St. Francis Dr.  
Santa Fe, New Mexico 87505

Form C-102  
Revised August 1, 2011  
Submit one copy to appropriate  
District Office

MAY 26 2015

AMENDED REPORT

WELL LOCATION AND ACREAGE DEDICATION PLAT

API Number <b>30-025-42585</b>	Pool Code <b>98039</b>	Pool Name <b>WC-025 G-06 S173230A; Wolfcamp</b>
Property Code <b>40291</b>	Property Name <b>CUTTHROAT FEDERAL</b>	Well Number <b>3</b>
OGRID No. <b>013837</b>	Operator Name <b>MACK ENERGY CORPORATION</b>	Elevation <b>3943'</b>

Surface Location

UL or lot No.	Section	Township	Range	Lot Idn	Feet from the	North/South line	Feet from the	East/West line	County
B	29	17-S	32-E		840	NORTH	2370	EAST	LEA

Bottom Hole Location If Different From Surface

UL or lot No.	Section	Township	Range	Lot Idn	Feet from the	North/South line	Feet from the	East/West line	County
B	29	17-S	32-E		965	NORTH	2285	EAST	LEA

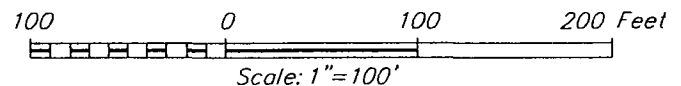
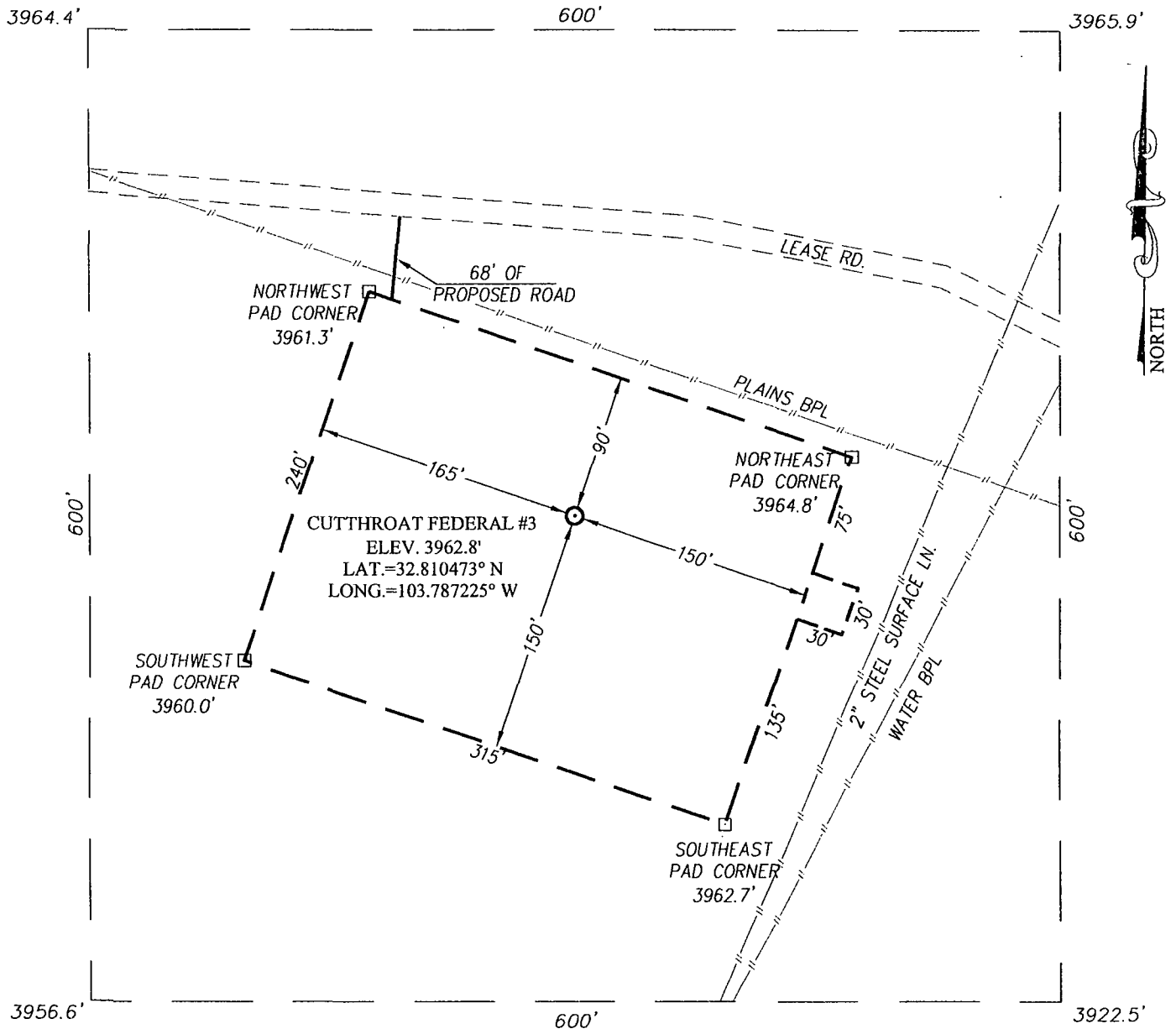
Dedicated Acres	Joint or Infill	Consolidation Code	Order No.
40			

NO ALLOWABLE WILL BE ASSIGNED TO THIS COMPLETION UNTIL ALL INTERESTS HAVE BEEN CONSOLIDATED OR A NON-STANDARD UNIT HAS BEEN APPROVED BY THE DIVISION

<p>GRID AZ. = 145°29'27" HORZ. DIST. = 151.2'</p> <p>DETAIL</p> <p>3964.4' 3965.9' 600' 3956.6' 3972.5'</p>	<p><b>OPERATOR CERTIFICATION</b></p> <p>I hereby certify that the information herein is true and complete to the best of my knowledge and belief, and that this organization either owns a working interest or unleased mineral interest in the land including the proposed bottom hole location or has a right to drill this well at this location pursuant to a contract with an owner of such mineral or working interest, or to a voluntary pooling agreement or a compulsory pooling order heretofore entered by the division.</p> <p><i>Jerry W. Sherrell</i> 9/19/13 Signature Date</p> <p>Jerry W. Sherrell Printed Name</p> <p>jerrys@mec.com E-mail Address</p>
<p><b>CORNER COORDINATES TABLE</b></p> <p>① - Y=659832.8 N, X=667513.8 E</p> <p>② - Y=659839.1 N, X=668832.2 E</p> <p>③ - Y=658512.8 N, X=667519.8 E</p> <p>④ - Y=658519.8 N, X=668838.8 E</p>	<p><b>SURVEYOR CERTIFICATION</b></p> <p>I hereby certify that the well location shown on this plat was plotted from field notes of actual surveys made by me or under my supervision, and that the same is true and correct to the best of my belief.</p> <p>APRIL 26, 2012</p> <p>Date of Survey</p> <p>Signature &amp; Seal of Professional Surveyor:</p> <p><i>Ronald J. Eidson</i> 3239 Ronald J. Eidson 12641 Ronald J. Eidson 3239</p> <p>AF PROFESSIONAL SURVEYOR WSC W.O.: 12.11.0758</p>

MAY 26 2015

**SECTION 29, TOWNSHIP 17 SOUTH, RANGE 32 EAST, N.M.P.M.**  
LEA COUNTY NEW MEXICO



**DIRECTIONS TO LOCATION**

FROM THE INTERSECTION OF MALJAMAR RD. AND CONOCO RD. GO WEST ON CONOCO RD. APPROX. 1.1 MILES. TURN LEFT AND GO SOUTH APPROX. 0.4 MILES. TURN RIGHT AND GO WEST APPROX. 0.3 MILES. TURN LEFT AND FOLLOW ROAD SURVEY 67 FEET SOUTH TO THE LOCATION.

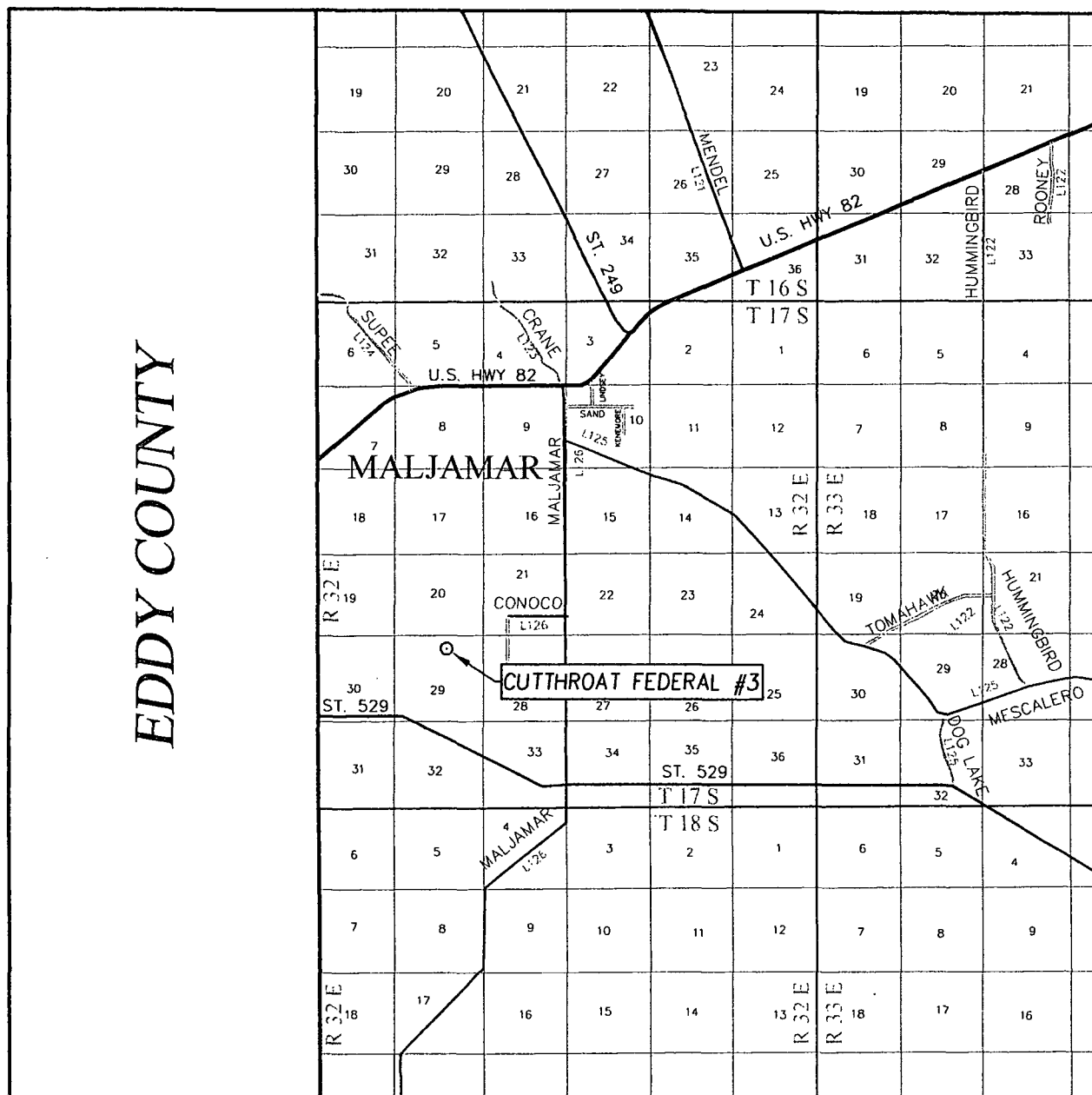
PROVIDING SURVEYING SERVICES  
SINCE 1946  
**JOHN WEST SURVEYING COMPANY**  
412 N. DAL PASO  
HOBBS, N.M. 88240  
(575) 393-3117 www.iwsc.biz

**MACK ENERGY CORPORATION**

**CUTTHROAT FEDERAL #3 WELL**  
LOCATED 840 FEET FROM THE NORTH LINE  
AND 2370 FEET FROM THE EAST LINE OF SECTION 29,  
TOWNSHIP 17 SOUTH, RANGE 32 EAST, N.M.P.M.,  
LEA COUNTY, NEW MEXICO

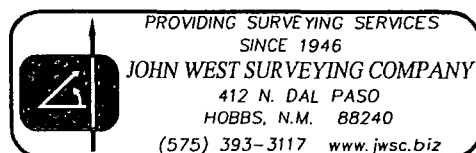
Survey Date: 4/26/12	CAD Date: 5/7/12	Drawn By: AF
W.O. No.: 12110758	Rev. .	Rel. W.O.: Sheet 1 of 1

# VICINITY MAP

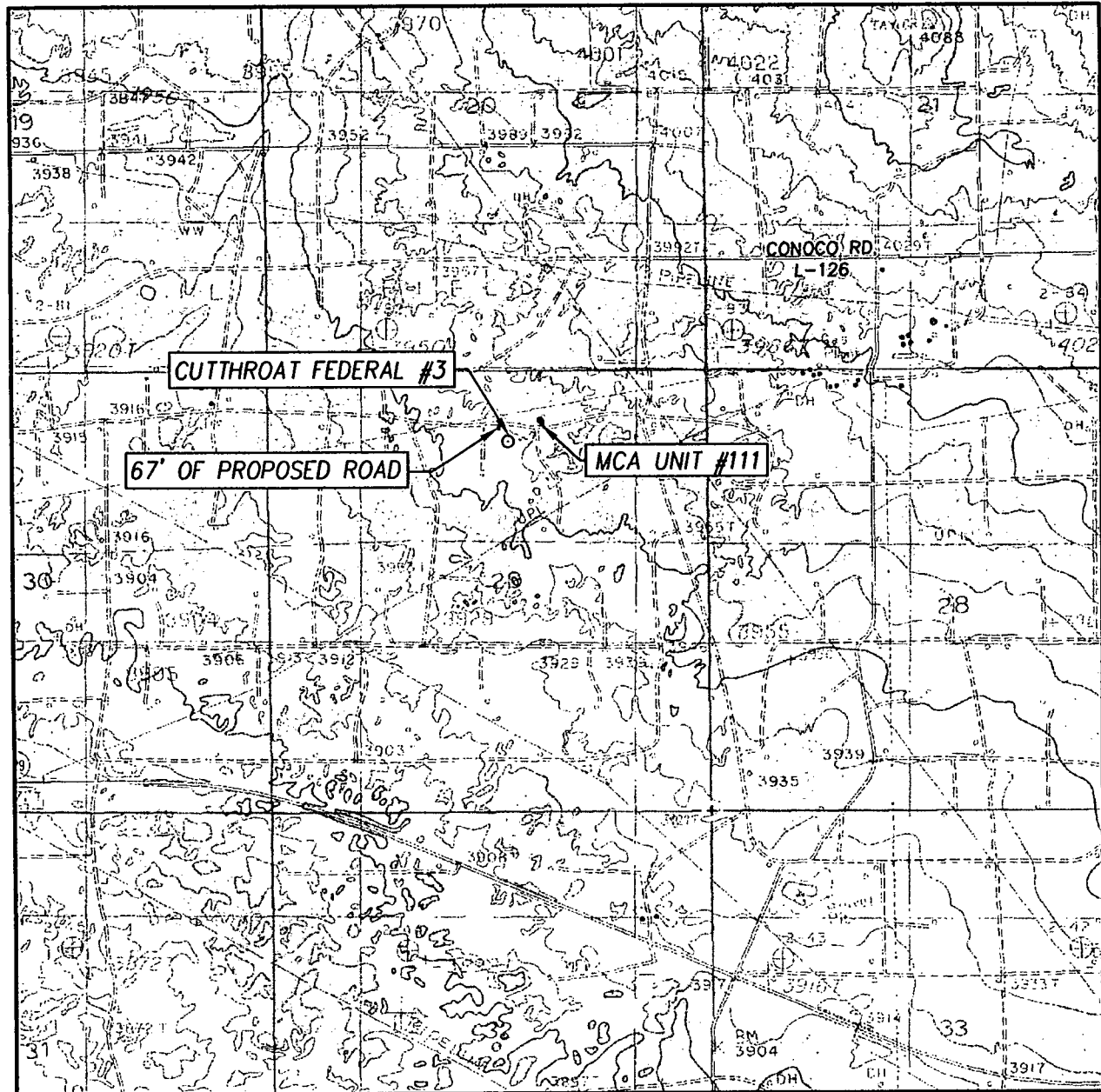


SCALE: 1" = 2 MILES

SEC. 29 TWP. 17-S RGE. 32-E  
 SURVEY N.M.P.M.  
 COUNTY LEA STATE NEW MEXICO  
 DESCRIPTION 840' FNL & 2370' FEL  
 ELEVATION 3963'  
 OPERATOR MACK ENERGY CORPORATION  
 LEASE CUTTHROAT FEDERAL



# LOCATION VERIFICATION MAP



SCALE: 1" = 2000'

CONTOUR INTERVAL:  
MALJAMAR, N.M. - 10'

SEC. 29 TWP. 17-S RGE. 32-E

SURVEY \_\_\_\_\_ N.M.P.M.

COUNTY LEA STATE NEW MEXICO

DESCRIPTION 840' FNL & 2370' FEL

ELEVATION 3963'

OPERATOR MACK ENERGY CORPORATION

LEASE CUTTHROAT FEDERAL

U.S.G.S. TOPOGRAPHIC MAP  
MALJAMAR, N.M.

