

DISTRICT I
1625 N. French Dr., Hobbs, NM 88240
Phone: (575) 393-6161 Fax: (575) 393-0720

DISTRICT II
811 S. First St., Artesia, NM 88210
Phone: (575) 748-1283 Fax: (575) 748-9720

DISTRICT III
1000 Rio Brazos Road, Aztec, NM 87410
Phone: (505) 334-6178 Fax: (505) 334-6170

DISTRICT IV
1220 S. St. Francis Dr., Santa Fe, NM 87505
Phone: (505) 476-3460 Fax: (505) 476-3462

State of New Mexico
Energy, Minerals & Natural Resources Department
OIL CONSERVATION DIVISION
1220 South St. Francis Dr.
Santa Fe, New Mexico 87505

HOBBS OCD

Form C-102
Revised August 1, 2011
Submit one copy to appropriate
District Office

MAY 26 2015

RECEIVED

☐ AMENDED REPORT

WELL LOCATION AND ACREAGE DEDICATION PLAT

API Number 30-029-42587	Pool Code 98039	Pool Name WC-025 G-06 S173230A; Wolfcamp
Property Code 40291	Property Name CUTTHROAT FEDERAL	
OGRID No. 013837	Operator Name MACK ENERGY CORPORATION	Well Number 7
		Elevation 3952'

Surface Location

UL or lot No.	Section	Township	Range	Lot Idn	Feet from the	North/South line	Feet from the	East/West line	County
G	29	17-S	32-E		1800	NORTH	2310	EAST	LEA

Bottom Hole Location If Different From Surface

UL or lot No.	Section	Township	Range	Lot Idn	Feet from the	North/South line	Feet from the	East/West line	County
G	29	17-S	32-E		2285	NORTH	2285	EAST	LEA

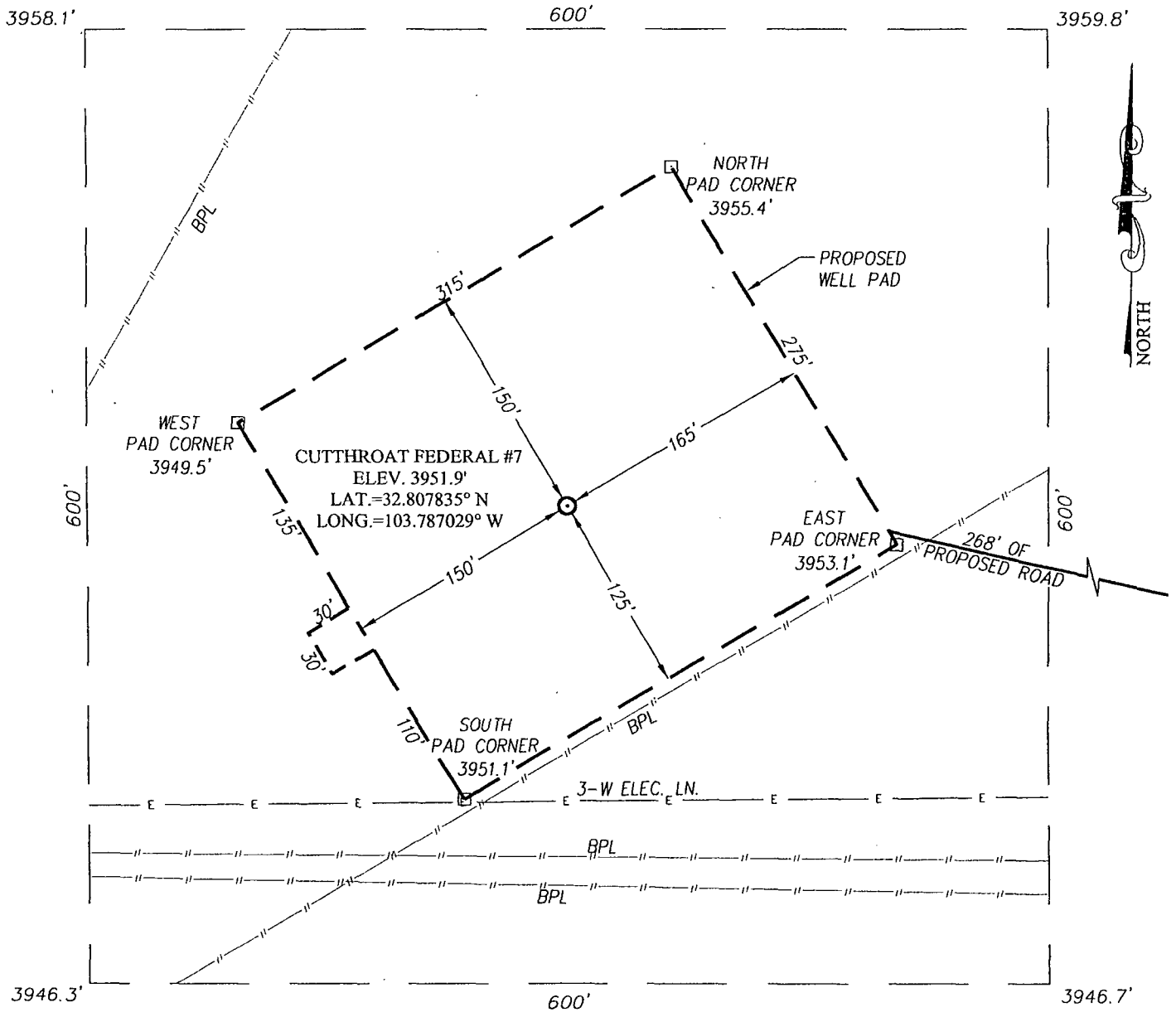
Dedicated Acres	Joint or Infill	Consolidation Code	Order No.
40			

NO ALLOWABLE WILL BE ASSIGNED TO THIS COMPLETION UNTIL ALL INTERESTS HAVE BEEN CONSOLIDATED OR A NON-STANDARD UNIT HAS BEEN APPROVED BY THE DIVISION

<p>CORNER COORDINATES TABLE</p> <p>(A) - Y=658512.8 N, X=667519.8 E</p> <p>(B) - Y=658519.8 N, X=668838.8 E</p> <p>(C) - Y=657193.4 N, X=667525.9 E</p> <p>(D) - Y=657200.8 N, X=668845.4 E</p> <p>GEODETIC COORDINATES NAD 27 NME</p> <p>SURFACE LOCATION</p> <p>Y=658034.8 N X=667850.9 E</p> <p>LAT.=32.807835° N LONG.=103.787029° W</p> <p>BOTTOM HOLE LOCATION</p> <p>Y=657550.1 N X=667878.4 E</p>	<p>OPERATOR CERTIFICATION</p> <p>I hereby certify that the information herein is true and complete to the best of my knowledge and belief, and that this organization either owns a working interest or unleased mineral interest in the land including the proposed bottom hole location or has a right to drill this well at this location pursuant to a contract with an owner of such mineral or working interest, or to a voluntary pooling agreement or a compulsory pooling order heretofore entered by the division.</p> <p><i>Jerry W. Sherrell</i> 9/20/13 Signature Date</p> <p>Jerry W. Sherrell Printed Name</p> <p>jerrys@mec.com E-mail Address</p> <p>SURVEYOR CERTIFICATION</p> <p>I hereby certify that the well location shown on this plat was plotted from field notes of actual surveys made by me or under my supervision, and that the same is true and correct to the best of my belief.</p> <p>APRIL 28, 2012</p> <p>Date of Survey</p> <p>Signature & Seal of Professional Surveyor:</p> <p><i>Ronald J. Eidson</i></p> <p>REG. 3239</p> <p>Certificate Number Gary J. Eidson 12641 Ronald J. Eidson 3239</p> <p>AF WSC W.O.: 12.11.0762</p>
---	---

MAY 26 2015

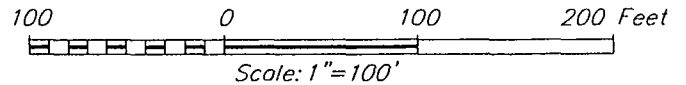
SECTION 29, TOWNSHIP 17 SOUTH, RANGE 32 EAST, N.M.P.M.
EDDY COUNTY NEW MEXICO



DIRECTIONS TO LOCATION

FROM THE INTERSECTION OF MALJAMAR RD. AND CONOCO RD.
 GO WEST ON CONOCO RD. APPROX. 1.1 MILES. TURN LEFT AND
 GO SOUTH APPROX. 0.4 MILES. TURN LEFT AND GO WEST
 APPROX. 0.2 MILES. TURN LEFT AND GO SOUTH APPROX. 0.3
 MILES TO EXISTING MCA #308. FOLLOW ROAD SURVEY 268 FEET
 NORTHWEST.

PROVIDING SURVEYING SERVICES
 SINCE 1946
JOHN WEST SURVEYING COMPANY
 412 N. DAL PASO
 HOBBS, N.M. 88240
 (575) 393-3117 www.jwsc.biz

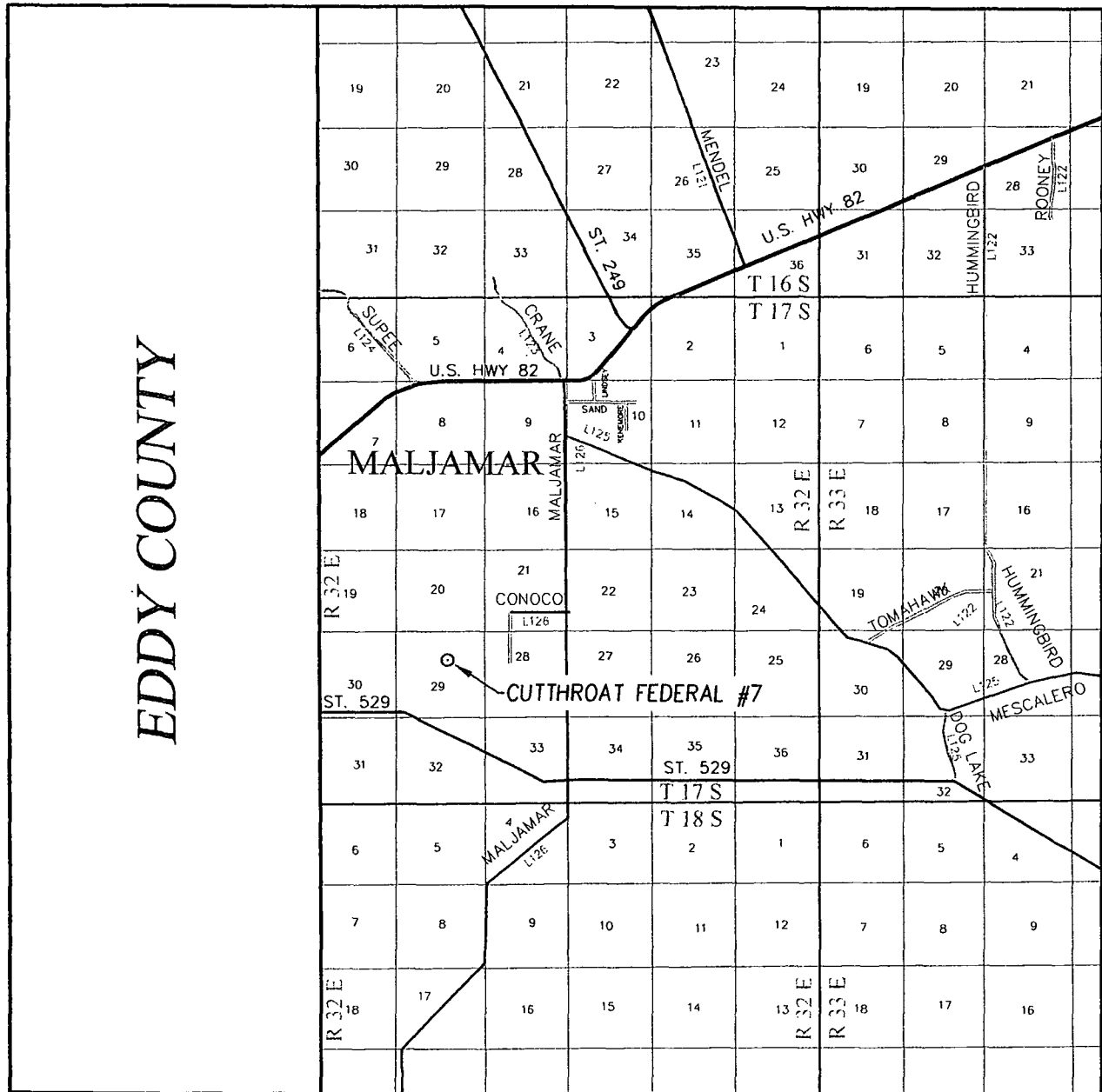


MACK ENERGY CORPORATION

CUTTHROAT FEDERAL #7 WELL
 LOCATED 1800 FEET FROM THE NORTH LINE
 AND 2310 FEET FROM THE EAST LINE OF SECTION 29,
 TOWNSHIP 17 SOUTH, RANGE 29 EAST, N.M.P.M.,
 LEA COUNTY, NEW MEXICO

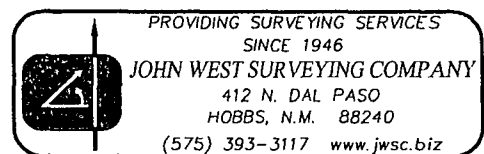
Survey Date: 4/28/12	CAD Date: 5/8/12	Drawn By: AF
W.O. No.: 12110762	Rev: .	Rel. W.O.: .
		Sheet 1 of 1

VICINITY MAP

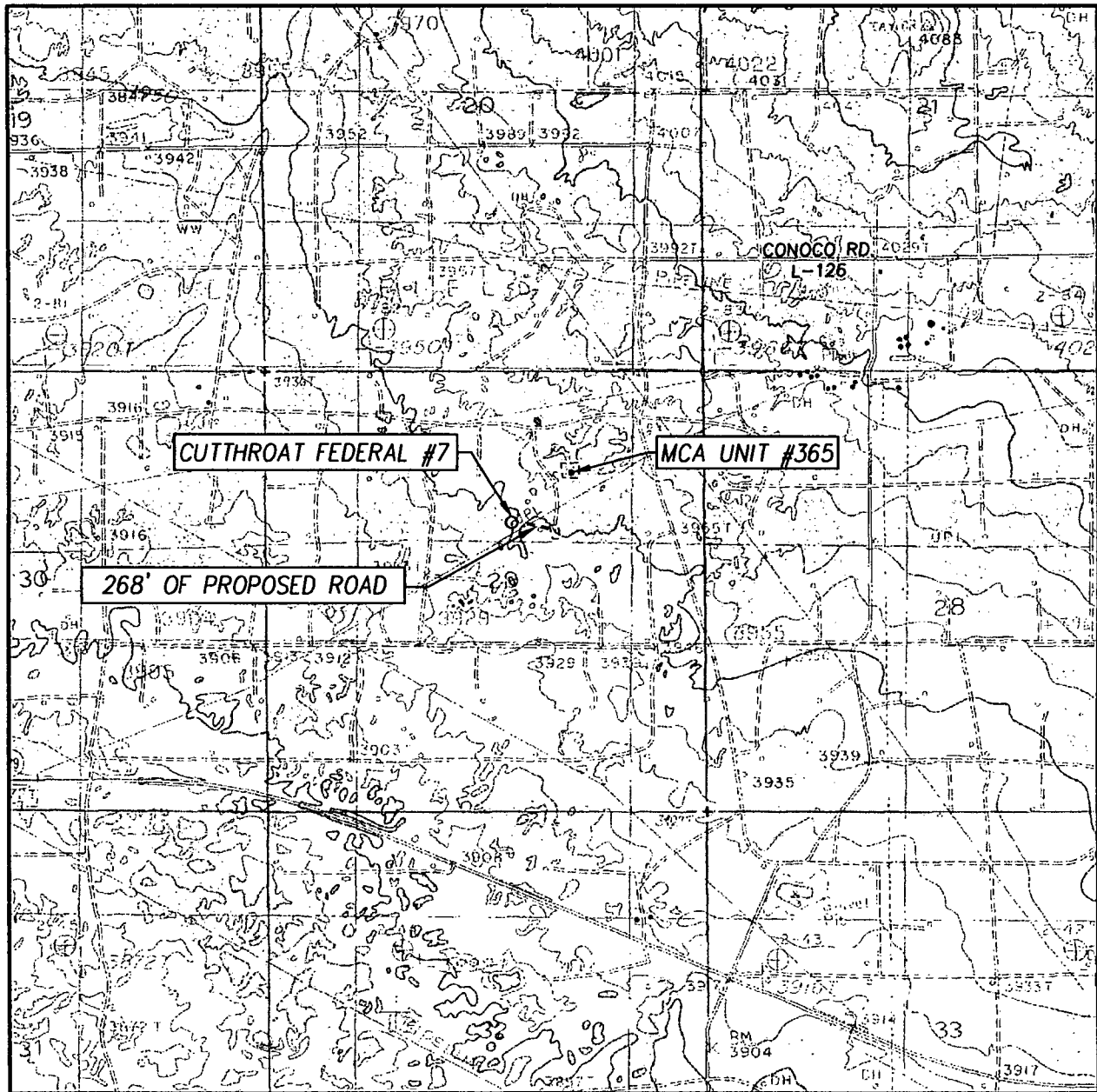


SCALE: 1" = 2 MILES

SEC. 29 TWP. 17-S RGE. 32-E
 SURVEY N.M.P.M.
 COUNTY LEA STATE NEW MEXICO
 DESCRIPTION 1800' FNL & 2310' FEL
 ELEVATION 3952'
 OPERATOR MACK ENERGY CORPORATION
 LEASE CUTTHROAT FEDERAL



LOCATION VERIFICATION MAP



SCALE: 1" = 2000'

CONTOUR INTERVAL:
MALJAMAR, N.M. - 10'

SEC. 29 TWP. 17-S RGE. 32-E

SURVEY N.M.P.M.

COUNTY LEA STATE NEW MEXICO

DESCRIPTION 1800' FNL & 2310' FEL

ELEVATION 3952'

OPERATOR MACK ENERGY CORPORATION

LEASE CUTTHROAT FEDERAL

U.S.G.S. TOPOGRAPHIC MAP
MALJAMAR, N.M.

