

MAY 26 2015

District I
1625 N. French Dr., Hobbs, NM 88240
Phone: (575) 393-6161 Fax: (575) 393-0720

District II
811 S. First St., Artesia, NM 88210
Phone: (575) 748-1283 Fax: (575) 748-9720

District III
1000 Rio Brazos Road, Aztec, NM 87410
Phone: (505) 334-6173 Fax: (505) 334-6170

District IV
1220 S. St. Francis Dr., Santa Fe, NM 87505
Phone: (505) 476-3460 Fax: (505) 476-3462

State of New Mexico
Energy, Minerals & Natural Resources Department
OIL CONSERVATION DIVISION
1220 South St. Francis Dr.
Santa Fe, NM 87505

RECEIVED

Form C-102
Revised August 1, 2011
Submit one copy to appropriate
District Office

☐ AMENDED REPORT

WELL LOCATION AND ACREAGE DEDICATION PLAT

¹ API Number 30-025-42589	² Pool Code 4946049490	³ Pool Name Paduca; Delaware, NORTH
⁴ Property Code 300635	⁵ Property Name COTTON DRAW UNIT	⁶ Well Number 250H
⁷ OGRID No. 6137	⁸ Operator Name DEVON ENERGY PRODUCTION COMPANY, L.P.	⁹ Elevation 3437.2

¹⁰ Surface Location

UL or lot no.	Section	Township	Range	Lot Idn	Feet from the	North/South line	Feet from the	East/West line	County
1 D	7	25 S	32 E		100	NORTH	460	WEST	LEA

¹¹ Bottom Hole Location If Different From Surface

UL or lot no.	Section	Township	Range	Lot Idn	Feet from the	North/South line	Feet from the	East/West line	County
4 M	7	25 S	32 E		330	SOUTH	660	WEST	LEA

¹² Dedicated Acres	¹³ Joint or Infill	¹⁴ Consolidation Code	¹⁵ Order No.
159.98 ac			

No allowable will be assigned to this completion until all interests have been consolidated or a non-standard unit has been approved by the division.

<p>460' SURFACE LOCATION</p> <p>LOT 1 40.39 AC</p> <p>NW CORNER SEC. 7 LAT. = 32.152088°N LONG. = 103.722979°W</p> <p>NMSP EAST (FT) N = 419598.07 E = 730229.30</p> <p>LOT 2 NMLC061863A</p> <p>W/4 CORNER SEC. 7 LAT. = 32.144828°N LONG. = 103.722992°W</p> <p>NMSP EAST (FT) N = 416959.45 E = 730239.54</p> <p>LOT 3 NMLC061873</p> <p>SW CORNER SEC. 7 LAT. = 32.137573°N LONG. = 103.723004°W</p> <p>NMSP EAST (FT) N = 414320.09 E = 730250.66</p> <p>LOT 4 40.13 AC</p> <p>660' 330'</p> <p>689°39'32"W 2658.63 FT</p>		<p>2662.90 FT</p> <p>N/4 CORNER SEC. 7 LAT. = 32.152077°N LONG. = 103.714374°W</p> <p>NMSP EAST (FT) N = 419611.92 E = 732891.58</p> <p>COTTON DRAW UNIT 250H ELEV. = 3437.2' LAT. = 32.151808°N (NAD83) LONG. = 103.721491°W</p> <p>NMSP EAST (FT) N = 419500.51 E = 730689.52</p> <p>NOTE: LATITUDE AND LONGITUDE COORDINATES ARE SHOWN USING THE NORTH AMERICAN DATUM OF 1983 (NAD83). LISTED NEW MEXICO STATE PLANE EAST COORDINATES ARE GRID (NAD83). BASIS OF BEARING AND DISTANCES USED ARE NEW MEXICO STATE PLANE EAST COORDINATES MODIFIED TO THE SURFACE.</p> <p>BOTTOM OF HOLE LAT. = 32.138481°N LONG. = 103.720871°W NMSP EAST (FT) N = 414654.08 E = 730909.05</p> <p>S/4 CORNER SEC. 7 SCALED</p> <p>589°39'32"W 2658.63 FT</p>		<p>2660.68 FT</p> <p>NE CORNER SEC. 7 LAT. = 32.152088°N LONG. = 103.705779°W</p> <p>NMSP EAST (FT) N = 419630.53 E = 735551.61</p> <p>E/4 CORNER SEC. 7 LAT. = 32.144799°N LONG. = 103.705807°W</p> <p>NMSP EAST (FT) N = 416979.52 E = 735558.39</p> <p>SE CORNER SEC. 7 LAT. = 32.137576°N LONG. = 103.705830°W</p> <p>NMSP EAST (FT) N = 414351.78 E = 735566.66</p> <p>500°08'48"E 2651.60 FT</p> <p>500°10'49"E 2628.36 FT</p>	
---	--	--	--	--	--

17 OPERATOR CERTIFICATION
I hereby certify that the information contained herein is true and complete to the best of my knowledge and belief, and that this organization either owns a working interest or unleased mineral interest in the land including the proposed bottom hole location or has a right to drill this well at this location pursuant to a contract with an owner of such a mineral or working interest, or to a voluntary pooling agreement or a compulsory pooling order heretofore entered by the division.

Trina C. Couch 10/14/14
Signature Date

Trina C. Couch, Regulatory Analyst
Printed Name

trina.couch@dmv.com
E-mail Address

18 SURVEYOR CERTIFICATION
I hereby certify that the well location shown on this plat was plotted from field notes of actual surveys made by me or under my supervision, and that the same is true and correct to the best of my belief.

JUNE 2, 2014
Date of Survey

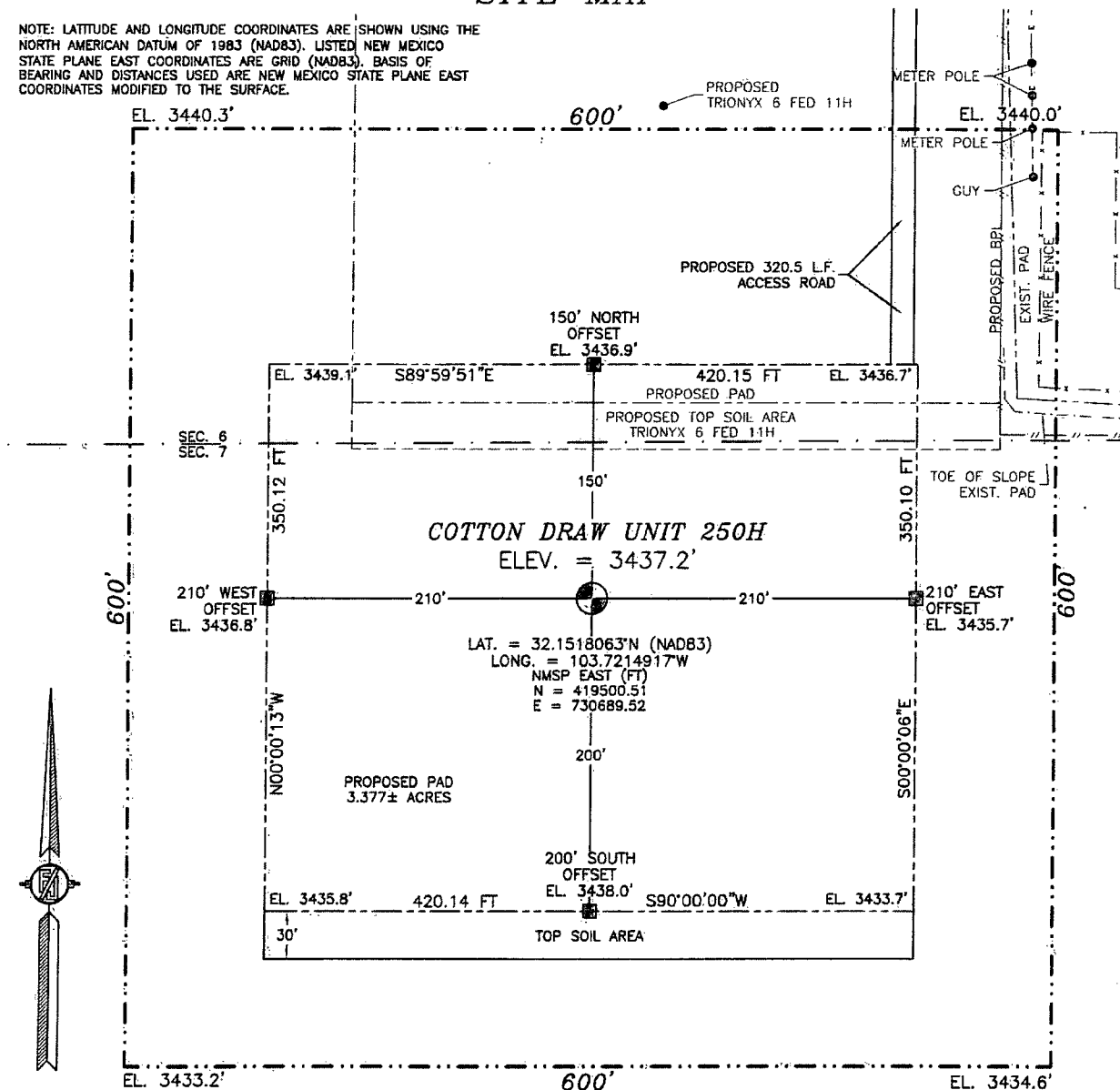
Filimon F. Jaramillo
Signature and Seal of Professional Surveyor

Certificate Number: FILIMON F. JARAMILLO, PLS 12797
SURVEY NO. 2968

MAY 26 2015

**SECTION 7, TOWNSHIP 25 SOUTH, RANGE 32 EAST, N.M.P.M.
LEA COUNTY, STATE OF NEW MEXICO
SITE MAP**

NOTE: LATITUDE AND LONGITUDE COORDINATES ARE SHOWN USING THE NORTH AMERICAN DATUM OF 1983 (NAD83). LISTED NEW MEXICO STATE PLANE EAST COORDINATES ARE GRID (NAD83). BASIS OF BEARING AND DISTANCES USED ARE NEW MEXICO STATE PLANE EAST COORDINATES MODIFIED TO THE SURFACE.



010 50 100 200

SCALE 1" = 100'

DIRECTIONS TO LOCATION

FROM THE INTERSECTION OF ORLA ROAD, CR 1 AND MONSANTO ROAD GO WEST ON MONSANTO ROAD APPROX. 2.1 MILES, TURN RIGHT AT ROAD INTERSECTION GO NORTH APPROX. 0.9 MILES ROAD TURNS LEFT GO WEST APPROX. 2.0 MILES TURN RIGHT AT ROAD INTERSECTION GO NORTH APPROX. 1.3 MILES TO CALICHE LEASE ROAD ON RIGHT GO EAST 1.1 MILES FOLLOW FLAGS ON RIGHT (SOUTH) ABOUT 320.5 FEET TO NORTHEAST CORNER OF PROPOSED PAD.

DEVON ENERGY PRODUCTION COMPANY, L.P.

COTTON DRAW UNIT 250H

**LOCATED 100 FT. FROM THE NORTH LINE
AND 460 FT. FROM THE WEST LINE OF
SECTION 7, TOWNSHIP 25 SOUTH,
RANGE 32 EAST, N.M.P.M.
LEA COUNTY, STATE OF NEW MEXICO**

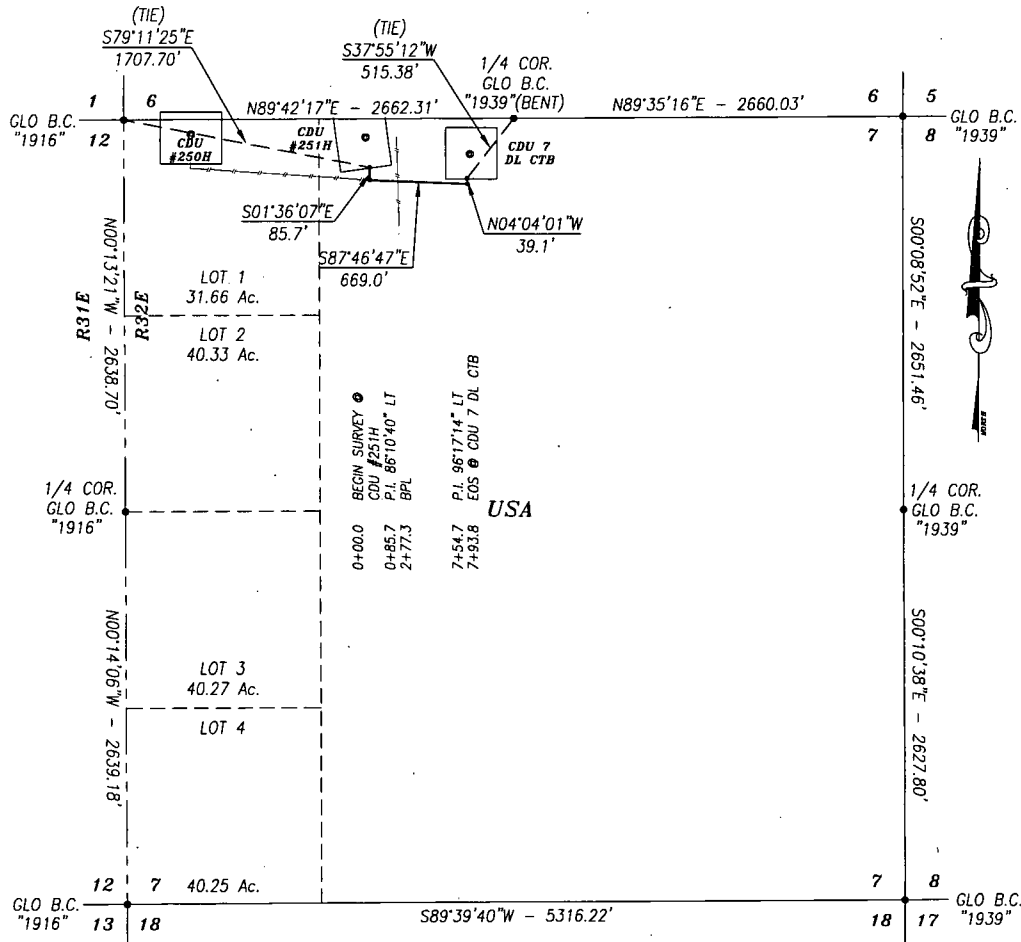
JUNE 2, 2014

SURVEY NO. 2968

MADRON SURVEYING, INC. 301 SOUTH CANAL (575) 234-3341 **CARLSBAD, NEW MEXICO**

**CDU #251H FLOWLINE
DEVON ENERGY PRODUCTION CO. LP.**

A 4" BURIED POLY FLOWLINE FROM THE CDU #251H TO THE CDU 7 DL CTB IN
SECTION 7, TOWNSHIP 25 SOUTH RANGE 32 EAST, N.M.P.M.,
LEA COUNTY, NEW MEXICO.



DESCRIPTION

A STRIP OF LAND 30.0 FEET WIDE AND 793.8 FEET OR 48.11 RODS OR 0.150 MILES IN LENGTH CROSSING USA LAND IN SECTION 7, TOWNSHIP 25 SOUTH, RANGE 32 EAST, LEA COUNTY, NEW MEXICO AND BEING 15.0 FEET LEFT AND 15.0 FEET RIGHT OF THE ABOVE PLATTED CENTERLINE SURVEY.

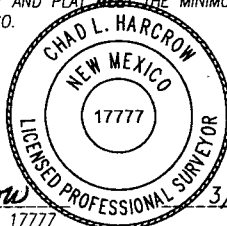
BASIS OF BEARING:
BEARINGS SHOWN HEREON ARE MERCATOR GRID AND CONFORM TO THE NEW MEXICO COORDINATE SYSTEM "NEW MEXICO EAST ZONE" NORTH AMERICAN DATUM 1983. DISTANCES ARE GRID VALUES.

HARCROW SURVEYING, LLC
2314 W. MAIN ST, ARTESIA, N.M. 88210
PH: (575) 746-2158 FAX: (575) 746-2158
c.harcrow@harcrowsurveying.com



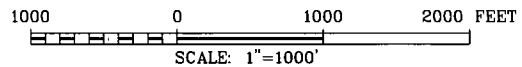
CERTIFICATION

I, CHAD HARCROW, A NEW MEXICO REGISTERED PROFESSIONAL SURVEYOR CERTIFY THAT I DIRECTED AND AM RESPONSIBLE FOR THIS SURVEY, THAT THIS SURVEY IS TRUE AND CORRECT TO THE BEST OF MY KNOWLEDGE AND BELIEF, AND THIS SURVEY AND PLAT MEET THE MINIMUM STANDARDS FOR SURVEYING IN NEW MEXICO.



Chad Harcrow
CHAD HARCROW N.M.P.S. NO. 17777

3/17/15
DATE



DEVON ENERGY PRODUCTION CO. LP.

SURVEY OF A PROPOSED FLOWLINE LOCATED IN
SECTION 7, TOWNSHIP 25 SOUTH, RANGE 32 EAST,
LEA COUNTY, NMPM, NEW MEXICO

SURVEY DATE: MARCH 7, 2015	LINE 2
DRAFTING DATE: MARCH 17, 2015	PAGE 1 OF 4
APPROVED BY: CH	DRAWN BY: SP
	FILE: 15-214

This topographic map depicts the Cotton Draw Unit 250H. The map features a grid with coordinates 3472, 3480, 3450, 3422, and 3400. Key features include:

- Proposed Access Road:** A dashed line labeled "PROPOSED 320.5 LF. ACCESS ROAD" running from the top right towards the center.
- Drill Holes:** Three locations marked with "Drill Hole" and small circles.
- Gas Wells:** Three locations marked with "Gas Well" and small circles.
- Gravel Pit:** Located in the bottom left corner.
- Contour Lines:** Elevation lines for 3400, 3450, and 3480 feet.
- Compass Rose:** Located on the right side, indicating North.
- Unit Label:** "COTTON DRAW UNIT 250H" is prominently displayed in the center.

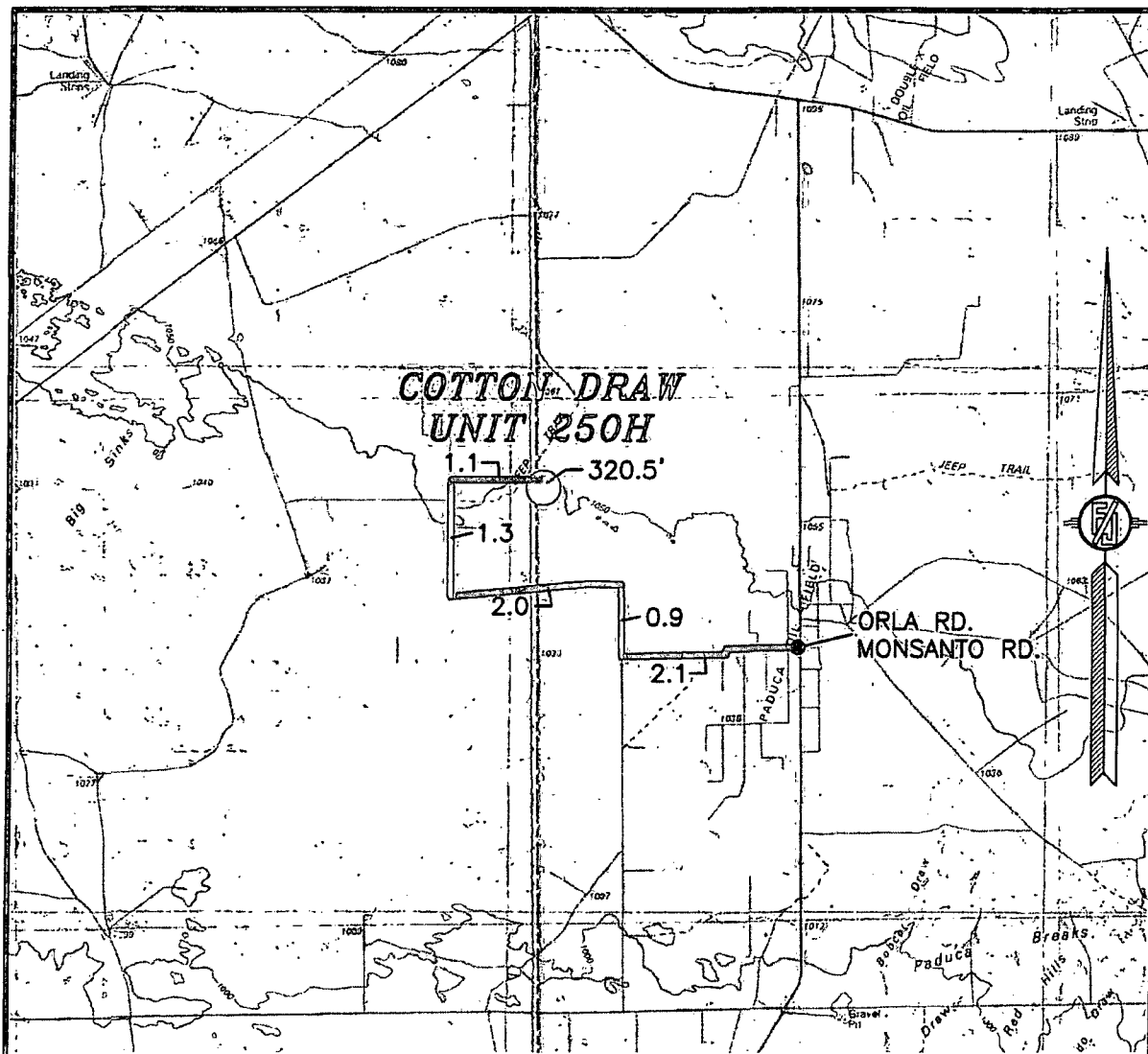
NOT TO SCALE

LOCATED 100 FT. FROM THE NORTH LINE
AND 460 FT. FROM THE WEST LINE OF
SECTION 7, TOWNSHIP 25 SOUTH,
RANGE 32 EAST, N.M.P.M.
LEA COUNTY, STATE OF NEW MEXICO

SURVEY NO. 2968

MADRON SURVEYING, INC. 301 SOUTH CANAL CARLSBAD, NEW MEXICO
(575) 234-3341

SECTION 7, TOWNSHIP 25 SOUTH, RANGE 32 EAST, N.M.P.M.
LEA COUNTY, STATE OF NEW MEXICO
VICINITY MAP



DISTANCES IN MILES

NOT TO SCALE

DIRECTIONS TO LOCATION

FROM THE INTERSECTION OF ORLA ROAD, CR. 1 AND MONSANTO ROAD
GO WEST ON MONSANTO ROAD APPROX. 2.1 MILES, TURN RIGHT AT
ROAD INTERSECTION GO NORTH APPROX. 0.9 MILES ROAD TURNS LEFT
GO WEST APPROX. 2.0 MILES TURN RIGHT AT ROAD INTERSECTION GO
NORTH APPROX. 1.3 MILES TO CALICHE LEASE ROAD ON RIGHT GO
EAST 1.1 MILES FOLLOW FLAGS ON RIGHT (SOUTH) ABOUT 320.5
FEET TO NORTHEAST CORNER OF PROPOSED PAD.

DEVON ENERGY PRODUCTION COMPANY, L.P.
COTTON DRAW UNIT 250H

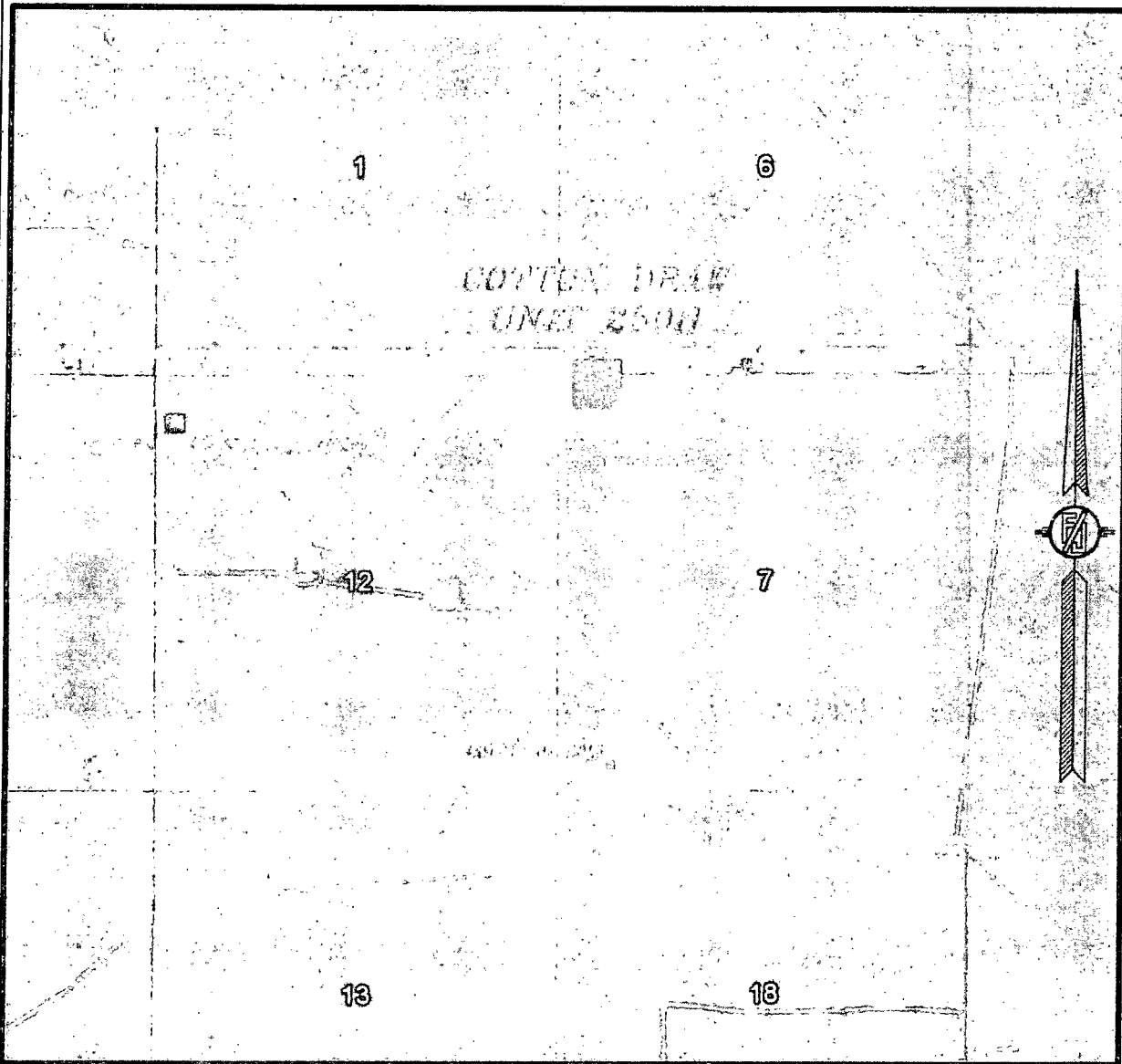
LOCATED 100 FT. FROM THE NORTH LINE
AND 460 FT. FROM THE WEST LINE OF
SECTION 7, TOWNSHIP 25 SOUTH,
RANGE 32 EAST, N.M.P.M.
LEA COUNTY, STATE OF NEW MEXICO

JUNE 2, 2014

MADRON SURVEYING, INC. 301 SOUTH CANAL (575) 234-3341 CARLSBAD, NEW MEXICO

SURVEY NO. 2968

SECTION 7, TOWNSHIP 25 SOUTH, RANGE 32 EAST, N.M.P.M.
LEA COUNTY, STATE OF NEW MEXICO
AERIAL PHOTO



NOT TO SCALE
AERIAL PHOTO:
GOOGLE EARTH
FEBRUARY 2014

DEVON ENERGY PRODUCTION COMPANY, L.P.
COTTON DRAW UNIT 250H

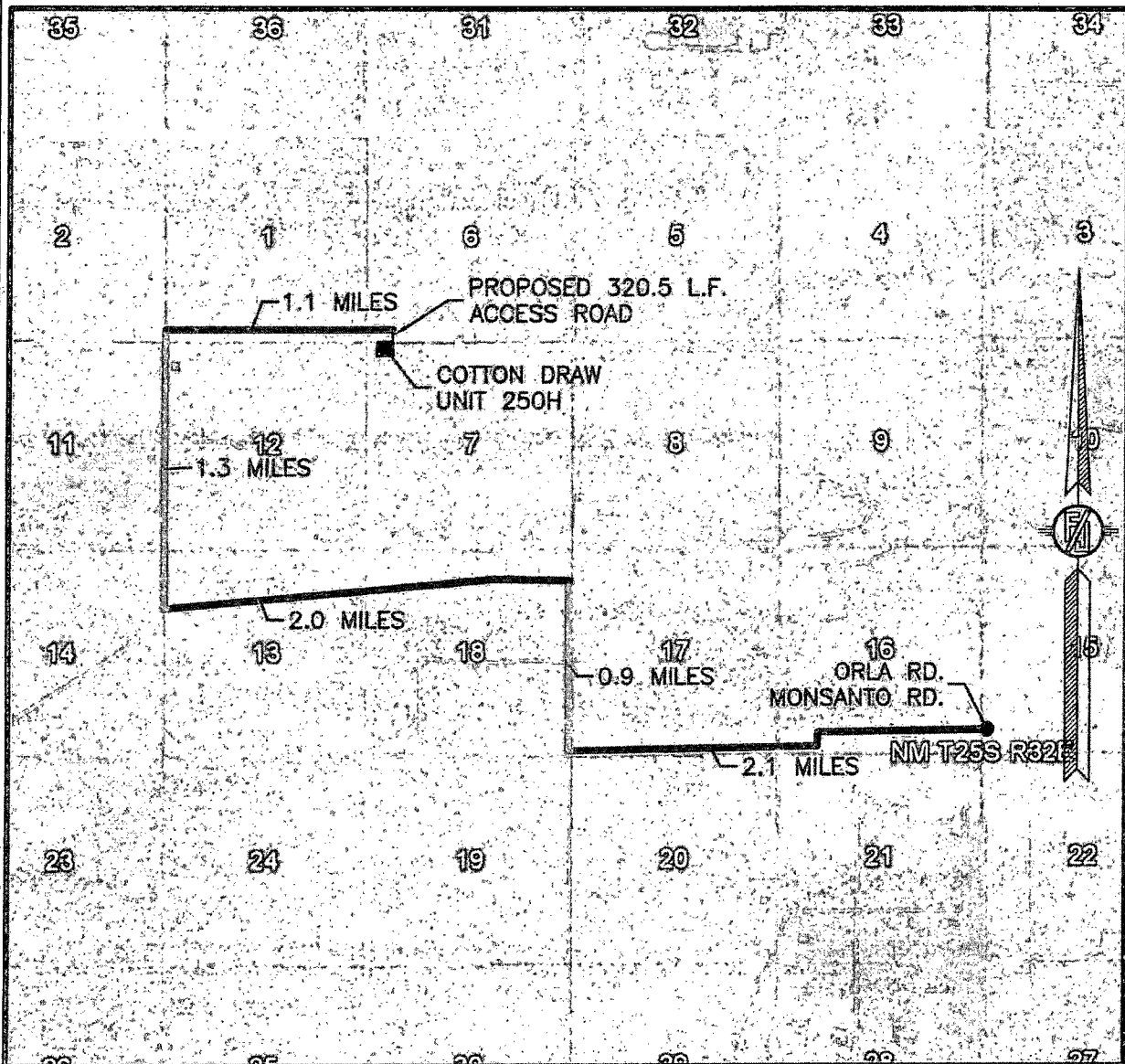
LOCATED 100 FT. FROM THE NORTH LINE
AND 460 FT. FROM THE WEST LINE OF
SECTION 7, TOWNSHIP 25 SOUTH,
RANGE 32 EAST, N.M.P.M.
LEA COUNTY, STATE OF NEW MEXICO

JUNE 2, 2014

SURVEY NO. 2968

MADRON SURVEYING, INC. 301 SOUTH CANAL (575) 234-3341 CARLSBAD, NEW MEXICO

SECTION 7, TOWNSHIP 25 SOUTH, RANGE 32 EAST, N.M.P.M.
LEA COUNTY, STATE OF NEW MEXICO
AERIAL ACCESS ROUTE MAP



NOT TO SCALE
AERIAL PHOTO:
GOOGLE EARTH
FEBRUARY 2014

DEVON ENERGY PRODUCTION COMPANY, L.P.
COTTON DRAW UNIT 250H

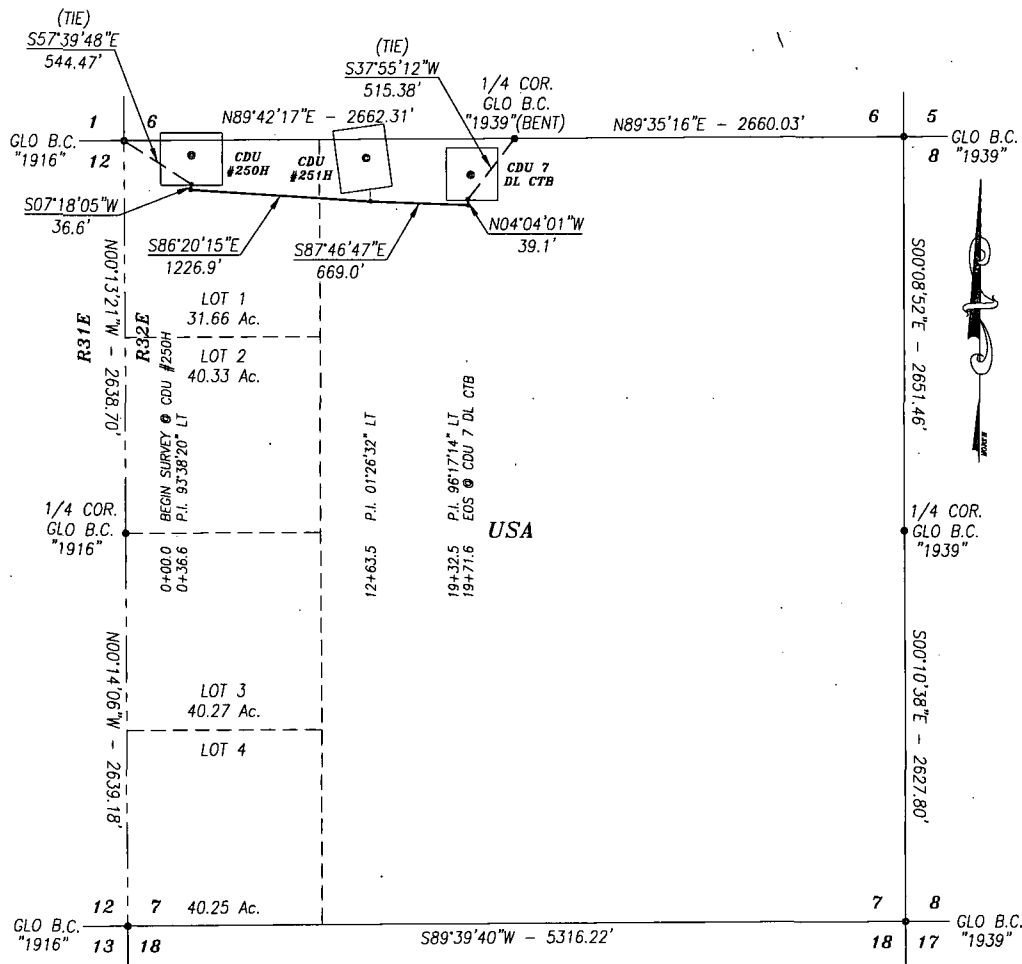
LOCATED 100 FT. FROM THE NORTH LINE
AND 460 FT. FROM THE WEST LINE OF
SECTION 7, TOWNSHIP 25 SOUTH,
RANGE 32 EAST, N.M.P.M.
LEA COUNTY, STATE OF NEW MEXICO

JUNE 2, 2014

SURVEY NO. 2968

MADRON SURVEYING, INC. 301 SOUTH CANAL (575) 234-3341 CARLSBAD, NEW MEXICO

CDU #250H FLOWLINE
DEVON ENERGY PRODUCTION CO. LP.
 A 4" BURIED POLY FLOWLINE FROM THE CDU #250H TO THE CDU 7 DL CTB
SECTION 7, TOWNSHIP 25 SOUTH, RANGE 32 EAST, N.M.P.M.,
 LEA COUNTY, NEW MEXICO.



DESCRIPTION

A STRIP OF LAND 30.0 FEET WIDE AND 1971.6 FEET OR 119.49 RODS OR 0.373 MILES IN LENGTH CROSSING USA LAND IN SECTION 7, TOWNSHIP 25 SOUTH, RANGE 32 EAST, LEA COUNTY, NEW MEXICO AND BEING 15.0 FEET LEFT AND 15.0 FEET RIGHT OF THE ABOVE PLATTED CENTERLINE SURVEY.

BASIS OF BEARING:

BEARINGS SHOWN HEREON ARE MERCATOR GRID AND CONFORM TO THE NEW MEXICO COORDINATE SYSTEM "NEW MEXICO EAST ZONE" NORTH AMERICAN DATUM 1983. DISTANCES ARE GRID VALUES.

HARCROW SURVEYING, LLC

2314 W. MAIN ST., ARTESIA, N.M. 88210
 PH: (575) 746-2158 FAX: (575) 746-2158
 c.harcrow@harcrowsurveying.com



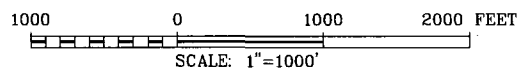
CERTIFICATION

I, CHAD HARCROW, A NEW MEXICO REGISTERED PROFESSIONAL SURVEYOR CERTIFY THAT I DIRECTED AND AM RESPONSIBLE FOR THIS SURVEY, THAT THIS SURVEY IS TRUE AND CORRECT TO THE BEST OF MY KNOWLEDGE AND BELIEF, AND THIS SURVEY AND PLAT MEET THE MINIMUM STANDARDS FOR SURVEYING IN NEW MEXICO.



Chad Harcrow
 CHAD HARCROW N.M.P.S. NO. 17777

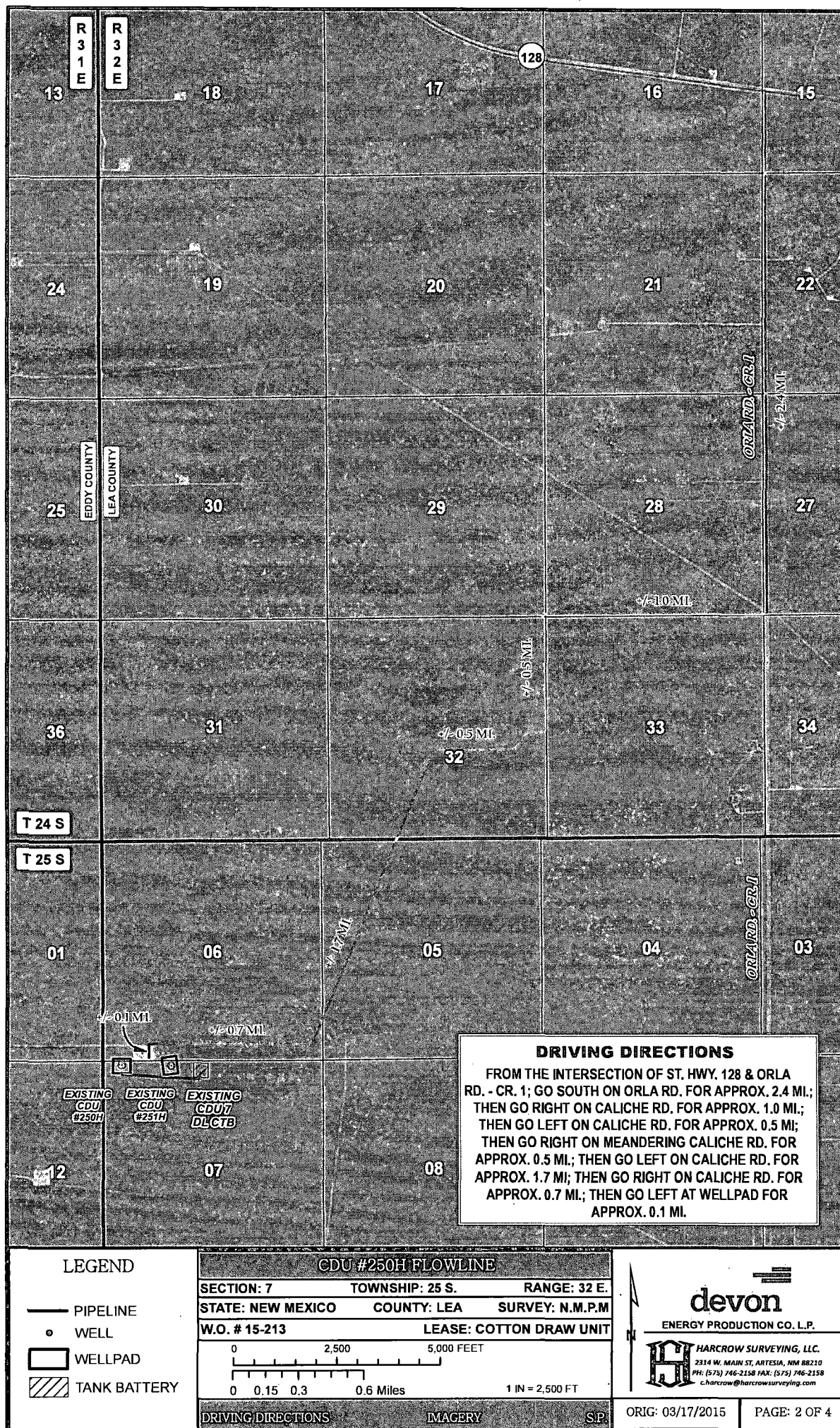
3/17/15
 DATE

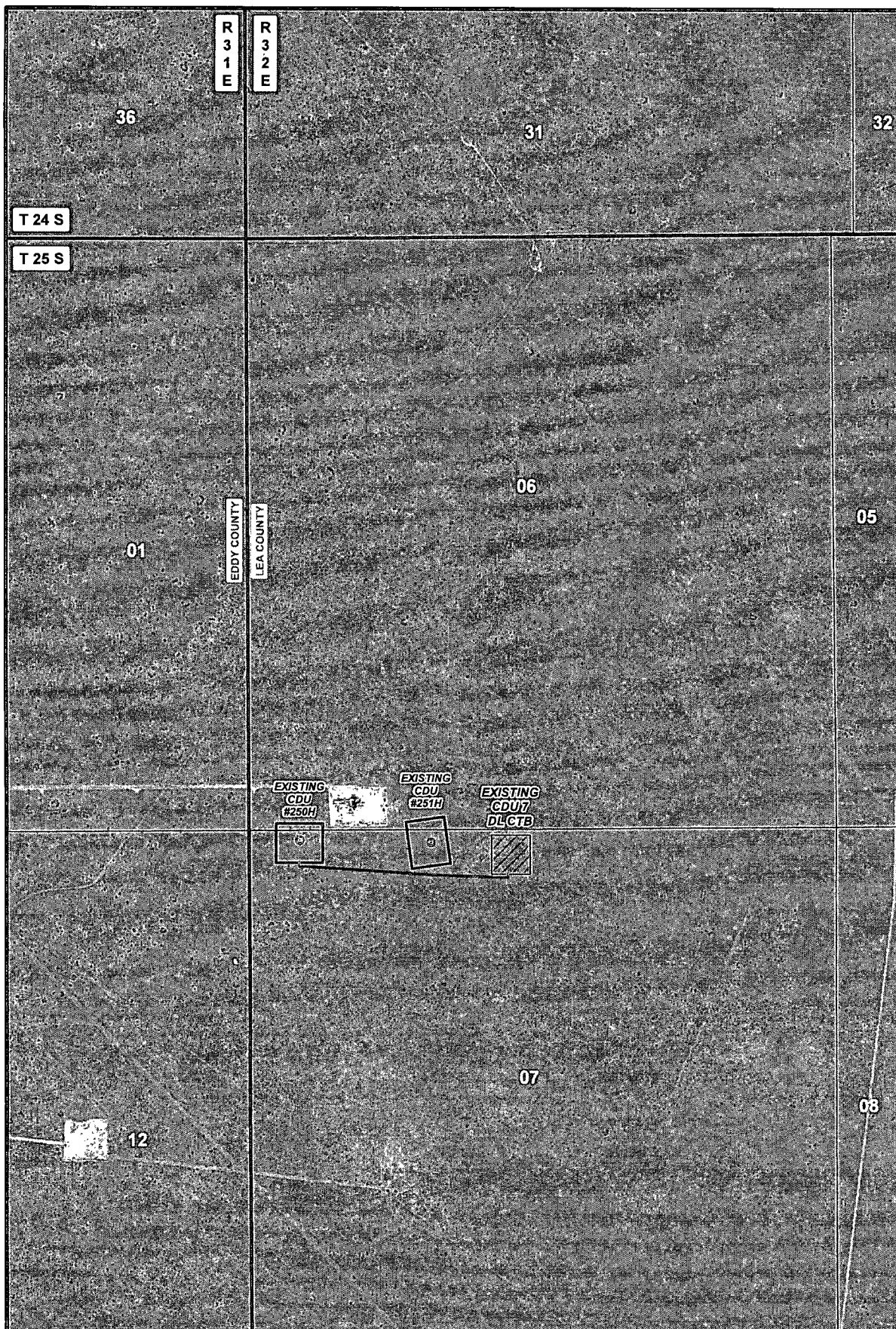


DEVON ENERGY PRODUCTION CO. LP.

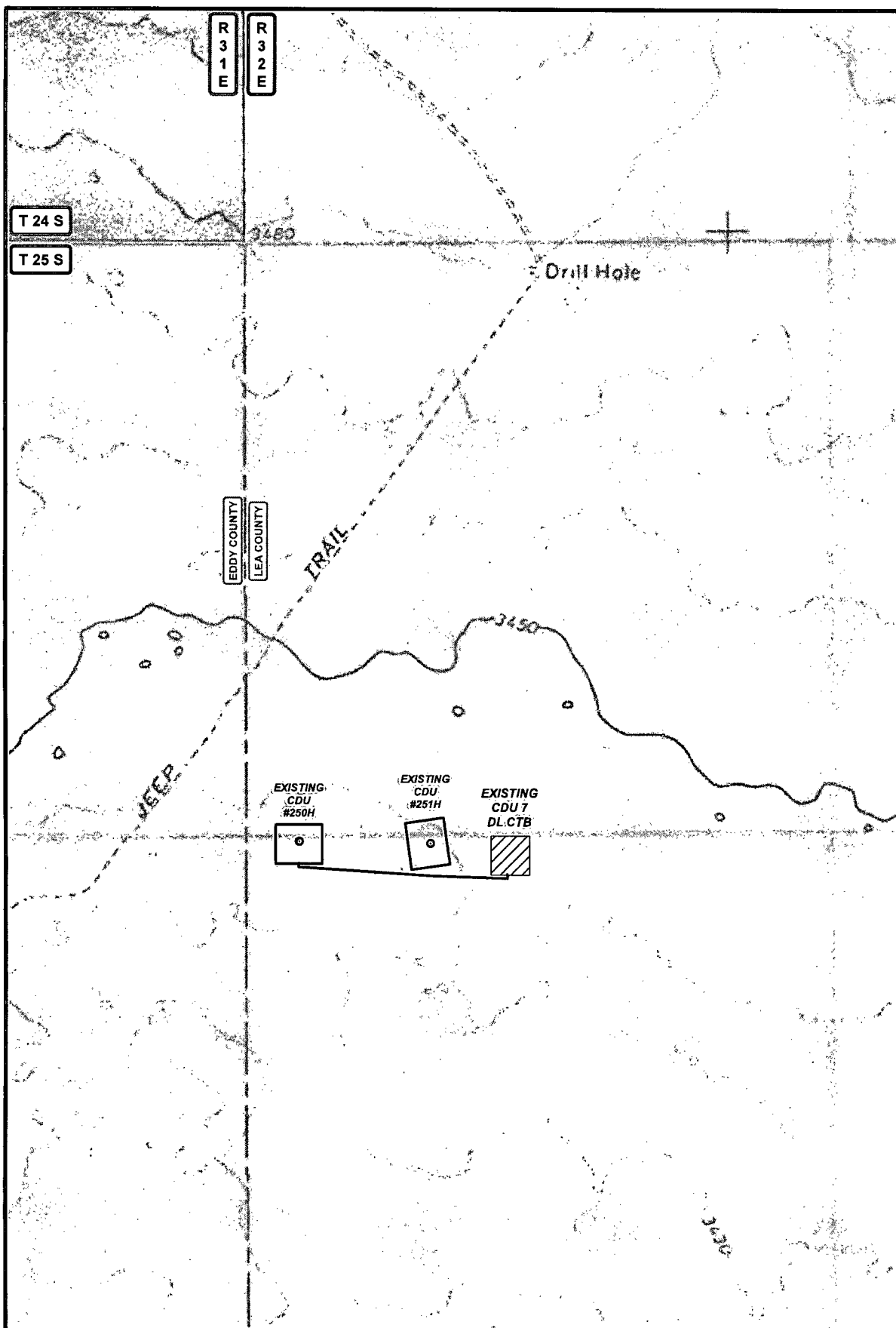
SURVEY OF A PROPOSED FLOWLINE LOCATED IN SECTION 7, TOWNSHIP 25 SOUTH, RANGE 32 EAST, LEA COUNTY, NMPM, NEW MEXICO

SURVEY DATE: MARCH 7, 2015	LINE 1
DRAFTING DATE: MARCH 17, 2015	PAGE 1 OF 4
APPROVED BY: CH	DRAWN BY: SP FILE: 15-213





LEGEND PIPELINE WELL WELLPAD TANK BATTERY	CDU #250H & FLOWLINE		
	SECTION: 7	TOWNSHIP: 25 S.	RANGE: 32 E.
	STATE: NEW MEXICO	COUNTY: LEA	SURVEY: N.M.P.M
	W.O. # 15-213 LEASE: COTTON DRAW UNIT		
<div style="display: flex; justify-content: space-between;"> <div> </div> <div> devon ENERGY PRODUCTION CO. L.P. HARCROW SURVEYING, LLC. <small>2314 W. MAIN ST. ARTESIA, NM 88210 PH: (575) 746-2158 FAX: (575) 746-2158 c.harcrow@harcrowsurveying.com</small> </div> </div>			
PIPELINE OVERVIEW		IMAGERY	SP: ORIG: 03/17/2015 PAGE: 3 OF 4



LEGEND PIPELINE WELL WELLPAD TANK BATTERY PRIVATE STATE OF NM US BLM	CDU #250H & FLOWLINE		
	SECTION: 7		TOWNSHIP: 25 S.
	STATE: NEW MEXICO		RANGE: 32 E.
	COUNTY: LEA		SURVEY: N.M.P.M
	W.O. # 15-213		LEASE: COTTON DRAW UNIT
PIPELINE OVERVIEW		LAND STATUS	SP

ENERGY PRODUCTION CO. L.P.

HARCROW SURVEYING, LLC.
 2314 W. MAIN ST, ARTESIA, NM 88210
 PH: (575) 746-2158 FAX: (575) 746-2158
 c.harcrow@harcrowsurveying.com

ORIG: 03/17/2015

PAGE: 4 OF 4

