

HOBBS OCD

MAY 26 2015

District I
1625 N. French Dr., Hobbs, NM 88240
Phone: (575) 393-6161 Fax: (575) 393-0720

District II
811 S. First St., Artesia, NM 88210
Phone: (575) 748-1283 Fax: (575) 748-9720

District III
1000 Rio Brazos Road, Aztec, NM 87410
Phone: (505) 334-6178 Fax: (505) 334-6170

District IV
1220 S. St. Francis Dr., Santa Fe, NM 87505
Phone: (505) 476-3460 Fax: (505) 476-3462

State of New Mexico
Energy, Minerals & Natural Resources Department
OIL CONSERVATION DIVISION
1220 South St. Francis Dr.
Santa Fe, NM 87505

Form C-102

Revised August 1, 2011

RECEIVED

Submit one copy to appropriate

District Office

☐ AMENDED REPORT

WELL LOCATION AND ACREAGE DEDICATION PLAT

¹ API Number 70025-42591	² Pool Code 9785996641	³ Pool Name WC-025 G-06 52532 06M; BS
⁴ Property Code 314753	⁵ Property Name PAINT 33 FED	
⁷ OGRID No. 6137	⁸ Operator Name DEVON ENERGY PRODUCTION COMPANY, L.P.	
		⁶ Well Number 2H
		⁹ Elevation 3493.1

¹⁰ Surface Location

UL or lot no.	Section	Township	Range	Lot Idn	Feet from the	North/South line	Feet from the	East/West line	County
N	33	24 S	32 E		200	SOUTH	1980	WEST	LEA

¹¹ Bottom Hole Location If Different From Surface

UL or lot no.	Section	Township	Range	Lot Idn	Feet from the	North/South line	Feet from the	East/West line	County
C	33	24 S	32 E		330	NORTH	1980	WEST	LEA

¹² Dedicated Acres	¹³ Joint or Infill	¹⁴ Consolidation Code	¹⁵ Order No.
160 ac			

No allowable will be assigned to this completion until all interests have been consolidated or a non-standard unit has been approved by the division.

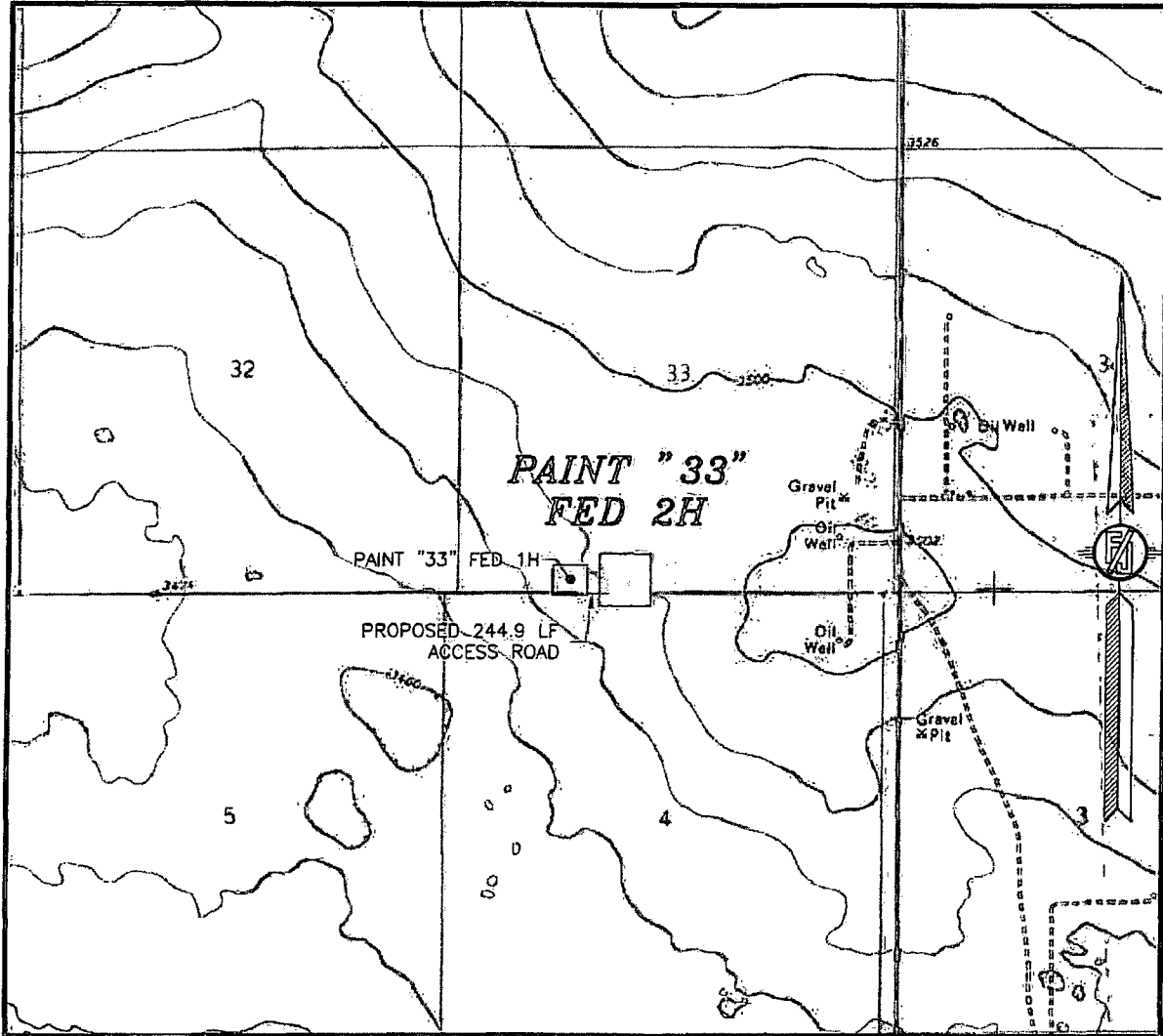
<p>N89°19'12"E 2643.06 FT</p> <p>N89°25'12"E 2640.16 FT</p> <p>NW CORNER SEC. 33 LAT. = 32.1812080°N LONG. = 103.6881525°W</p> <p>NMSP EAST (FT) N = 430256.73 E = 740943.35</p> <p>BOTTOM OF HOLE LAT. = 32.1803329°N LONG. = 103.6817527°W N = 429980.31 E = 742985.29</p> <p>W Q CORNER SEC. 33 LAT. = 32.1739477°N LONG. = 103.6881392°W</p> <p>NMSP EAST (FT) N = 427615.56 E = 740963.30</p> <p>SW CORNER SEC. 33 LAT. = 32.1666862°N LONG. = 103.6881230°W</p> <p>NMSP EAST (FT) N = 424973.91 E = 740984.15</p> <p>PAINT 33 FED 2H ELEV. = 3493.1' LAT. = 32.672599°N (NAD83) LONG. = 103.6817269°W NMSP EAST (FT) N = 425198.55 E = 742968.07</p> <p>SURFACE LOCATION N Q CORNER SEC. 4 LAT. = 32.667164°N LONG. = 103.6800433°W NMSP EAST (FT) N = 425000.00 E = 741484.24</p> <p>NE CORNER SEC. 33 LAT. = 32.1812794°N LONG. = 103.6710803°W</p> <p>NMSP EAST (FT) N = 430314.81 E = 746225.09</p> <p>NOTE: LATITUDE AND LONGITUDE COORDINATES ARE SHOWN USING THE NORTH AMERICAN DATUM OF 1983 (NAD83). LISTED NEW MEXICO STATE PLANE EAST COORDINATES ARE GRID (NAD83). BASIS OF BEARING AND DISTANCES USED ARE NEW MEXICO STATE PLANE; EAST COORDINATES MODIFIED TO THE SURFACE.</p> <p>Project Area DNF</p> <p>Producing Area</p> <p>S Q CORNER SEC. 33 LAT. = 32.1667199°N LONG. = 103.6795858°W NMSP EAST (FT) N = 425030.10 E = 746145.34</p> <p>SE CORNER SEC. 33 LAT. = 32.1667543°N LONG. = 103.6714432°W NMSP EAST (FT) N = 425030.10 E = 746145.34</p> <p>S Q CORNER SEC. 4 LAT. = 32.1667199°N LONG. = 103.6795858°W NMSP EAST (FT) N = 425002.12 E = 743625.80</p> <p>SE CORNER SEC. 33 LAT. = 32.1667543°N LONG. = 103.6714432°W NMSP EAST (FT) N = 425030.81 E = 746266.70</p> <p>S89°24'08"W 2500.77 FT S89°08'26"W 141.81 FT S89°21'49"W 2520.24 FT S89°40'05"W 121.39 FT</p>		<p>¹⁷ OPERATOR CERTIFICATION</p> <p>I hereby certify that the information contained herein is true and complete to the best of my knowledge and belief, and that this organization either owns a working interest or unleased mineral interest in the land including the proposed bottom hole location or has a right to drill this well at this location pursuant to a contract with an owner of such a mineral or working interest, or to a voluntary pooling agreement or a compulsory pooling order heretofore entered by the division.</p> <p><i>Trina C. Couch</i> 10/17/14 Signature Date</p> <p>Trina C. Couch, Regulatory Analyst Printed Name</p> <p>trina.couch@dmv.com E-mail Address</p> <p>¹⁸ SURVEYOR CERTIFICATION</p> <p>I hereby certify that the well location shown on this plat was plotted from field notes of actual surveys made by me or under my supervision, and that the same is true and correct to the best of my belief.</p> <p>SEPTEMBER 23 2014 Date of Survey</p> <p><i>[Signature]</i> 12797 Signature and Seal of Registered Surveyor</p> <p>Certificate Number: 12797 SURVEY NO. 3185A</p>
----------------------------------------------------------------------------------------------------------------------------------------------------------------------------------------------------------------------------------------------------------------------------------------------------------------------------------------------------------------------------------------------------------------------------------------------------------------------------------------------------------------------------------------------------------------------------------------------------------------------------------------------------------------------------------------------------------------------------------------------------------------------------------------------------------------------------------------------------------------------------------------------------------------------------------------------------------------------------------------------------------------------------------------------------------------------------------------------------------------------------------------------------------------------------------------------------------------------------------------------------------------------------------------------------------------------------------------------------------------------------------------------------------------------------------------------------------------------------------------------------------------------------------------------------------------------------------------------------------------------------------------------------------------------------------------------------------------------------------------------------------------------------------------------------------------------------------------------------------------------------------------------------------------------------------------------------------------------------------------------------------------------------------------	--	-------------------------------------------------------------------------------------------------------------------------------------------------------------------------------------------------------------------------------------------------------------------------------------------------------------------------------------------------------------------------------------------------------------------------------------------------------------------------------------------------------------------------------------------------------------------------------------------------------------------------------------------------------------------------------------------------------------------------------------------------------------------------------------------------------------------------------------------------------------------------------------------------------------------------------------------------------------------------------------------------------------------------------------------------------------------------------------------------------------------------------------------------------------------------------

MAY 26 2015

SITE MAP

301 SOUTH CANAL
(575) 234-3341

SECTION 33, TOWNSHIP 24 SOUTH, RANGE 32 EAST, N.M.P.M.
LEA COUNTY, STATE OF NEW MEXICO
LOCATION VERIFICATION MAP



USGS QUAD MAP:
PADUCA BREAKS NW

NOT TO SCALE

DEVON ENERGY PRODUCTION COMPANY, L.P.

PAINT "33" FED 2H

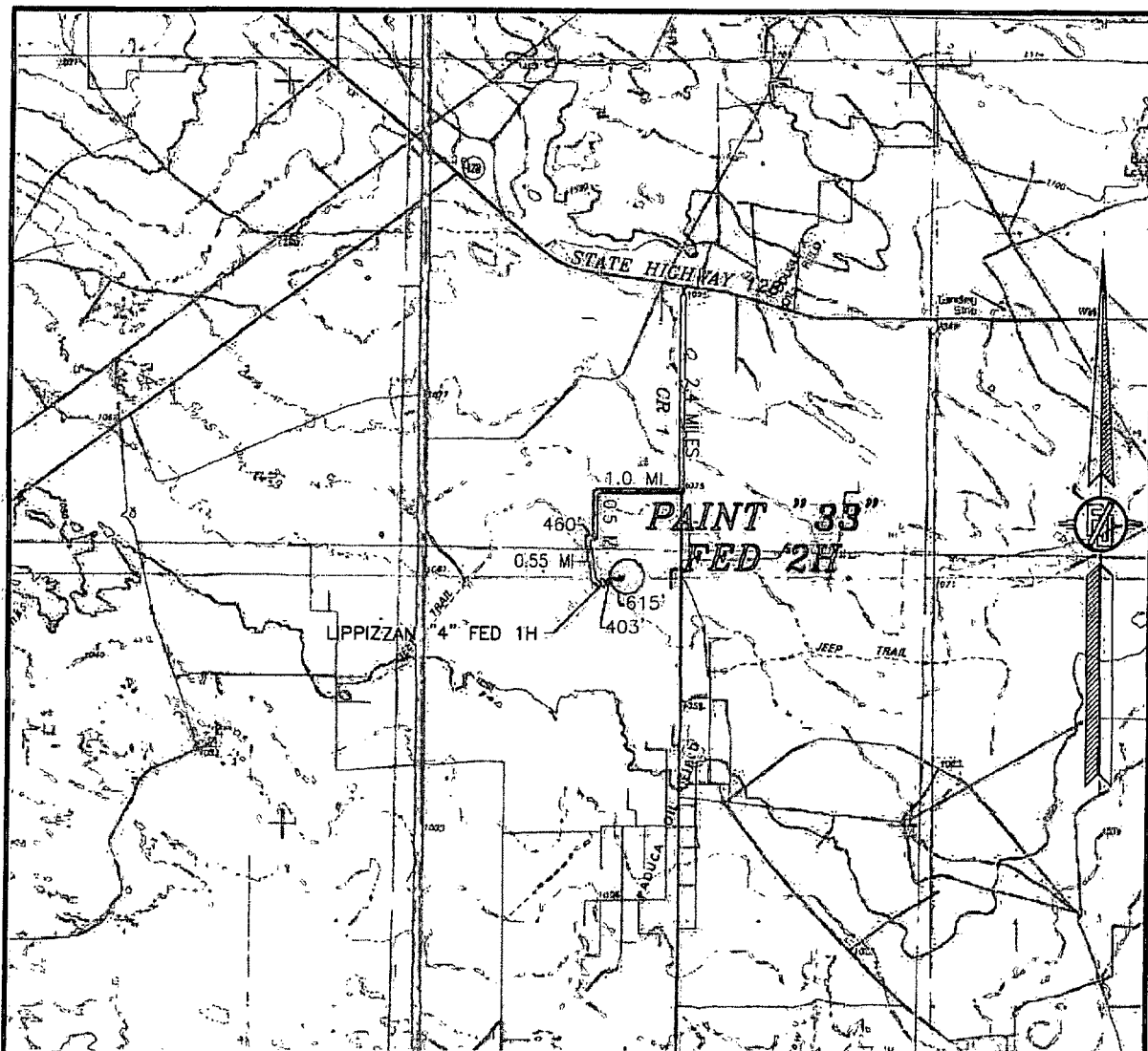
LOCATED 200 FT. FROM THE SOUTH LINE
AND 1980 FT. FROM THE WEST LINE OF
SECTION 33, TOWNSHIP 24 SOUTH,
RANGE 32 EAST, N.M.P.M.
LEA COUNTY, STATE OF NEW MEXICO

SEPTEMBER 23, 2014

SURVEY NO. 3185A

MADRON SURVEYING, INC. 301 SOUTH CANAL (575) 234-3341 CARLSBAD, NEW MEXICO

SECTION 33, TOWNSHIP 24 SOUTH, RANGE 32 EAST, N.M.P.M.
LEA COUNTY, STATE OF NEW MEXICO
VICINITY MAP



DISTANCES IN MILES

NOT TO SCALE

DEVON ENERGY PRODUCTION COMPANY, L.P.

PAINT "33" FED 2H

LOCATED 200 FT. FROM THE SOUTH LINE
AND 1980 FT. FROM THE WEST LINE OF
SECTION 33, TOWNSHIP 24 SOUTH,
RANGE 32 EAST, N.M.P.M.
LEA COUNTY, STATE OF NEW MEXICO

SEPTEMBER 23, 2014

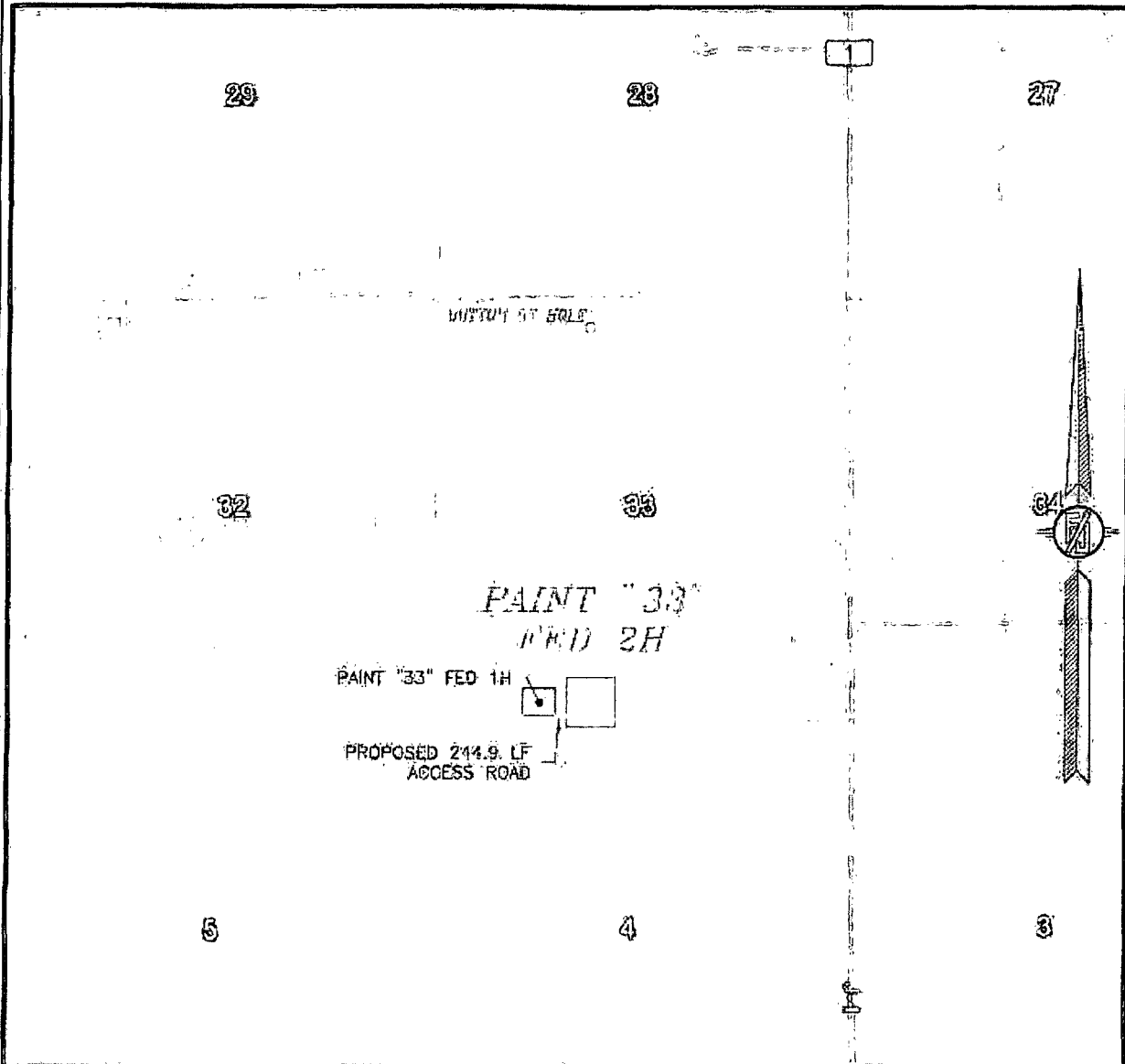
DIRECTIONS TO LOCATION

FROM STATE HIGHWAY 128 AND CR 1 (ORLA ROAD) GO SOUTH ON CR 1 FOR 2.4 MILES, TURN RIGHT ON CALICHE ROAD AND GO WEST 1.0 MILES, TURN LEFT AND GO SOUTH 0.5 MILES, BEND RIGHT AND GO WEST 460', TURN LEFT AND GO SOUTHEAST 0.55 MILES TO EXISTING PAD FOR LIPPIZZAN "4" FED. 1H: FROM THE NORTHEAST PAD CORNER FOLLOW PROPOSED ROAD SURVEY NORTHEAST 403', THEN EAST 615' TO THE SOUTHWEST CORNER OF PROPOSED PAD FOR THIS LOCATION.

SURVEY NO. 3185A

MADRON SURVEYING, INC. 301 SOUTH CANAL (575) 234-3341 CARLSBAD, NEW MEXICO

SECTION 33, TOWNSHIP 24 SOUTH, RANGE 32 EAST, N.M.P.M.
LEA COUNTY, STATE OF NEW MEXICO
AERIAL PHOTO



NOT TO SCALE
AERIAL PHOTO:
GOOGLE EARTH
FEBRUARY 2014

DEVON ENERGY PRODUCTION COMPANY, L.P.

PAINT "33" FED 2H

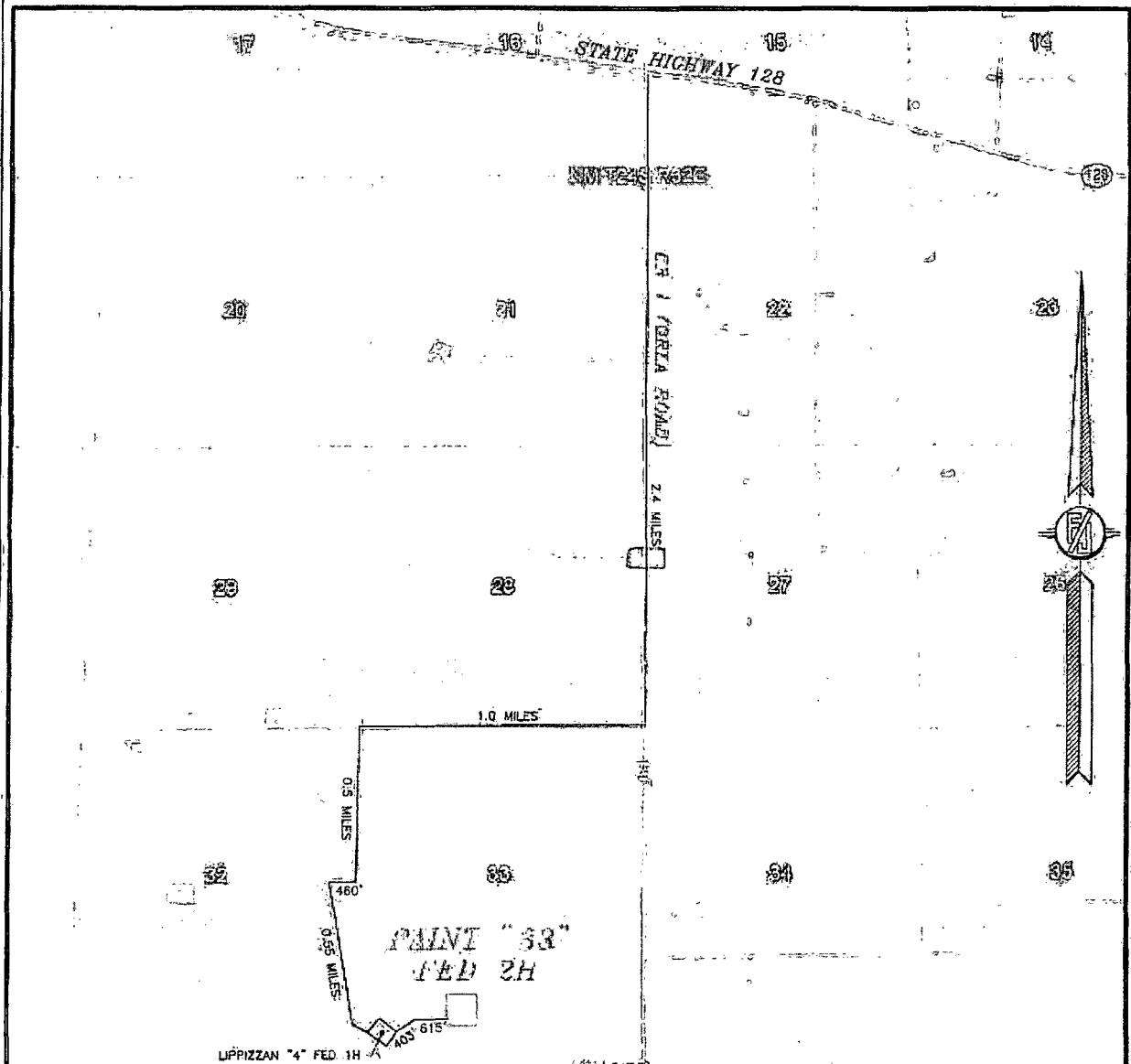
LOCATED 200 FT. FROM THE SOUTH LINE
AND 1980 FT. FROM THE WEST LINE OF
SECTION 33, TOWNSHIP 24 SOUTH,
RANGE 32 EAST, N.M.P.M.
LEA COUNTY, STATE OF NEW MEXICO

SEPTEMBER 23, 2014

SURVEY NO. 3185A

MADRON SURVEYING, INC. 301 SOUTH CANAL (575) 234-3341 CARLSBAD, NEW MEXICO

SECTION 33, TOWNSHIP 24 SOUTH, RANGE 32 EAST, N.M.P.M.
LEA COUNTY, STATE OF NEW MEXICO
ACCESS AERIAL ROUTE MAP



NOT TO SCALE
AERIAL PHOTO:
GOOGLE EARTH
FEBRUARY 2014

DEVON ENERGY PRODUCTION COMPANY, L.P.

PAINT "33" FED 2H

LOCATED 200 FT. FROM THE SOUTH LINE
AND 1980 FT. FROM THE WEST LINE OF
SECTION 33, TOWNSHIP 24 SOUTH,
RANGE 32 EAST, N.M.P.M.
LEA COUNTY, STATE OF NEW MEXICO

SEPTEMBER 23, 2014

SURVEY NO. 3185A

MADRON SURVEYING, INC. 301 SOUTH CANAL (575) 234-3341 CARLSBAD, NEW MEXICO

