

**District I**  
1625 N. French Dr., Hobbs, NM 88240

**District II**  
1301 W. Grand Avenue, Artesia, NM 88210

**District III**  
1000 Rio Brazos Rd., Aztec, NM 87410

**District IV**  
1220 S. St. Francis Dr., Santa Fe, NM 87505

State of New Mexico  
Energy, Minerals & Natural Resources Department  
**OIL CONSERVATION DIVISION**  
1220 South St. Francis Dr.  
Santa Fe, NM 87505

HOBBS OCD

Form C-102  
Revised July 16, 2010  
Submit one copy to appropriate  
District Office

OCT 22 2014

☐ AMENDED REPORT

RECEIVED

**WELL LOCATION AND ACREAGE DEDICATION PLAT**

|   |  |  |  |  |                                |
|---|--|--|--|--|--------------------------------|
| <sup>1</sup> API Number<br>30-041-20965 |  | <sup>2</sup> Pool Code<br>86442 86443              |  | <sup>3</sup> Pool Name<br>Tule - Montoya (Gas) |                                |
| <sup>4</sup> Property Code<br>306460    |  | <sup>5</sup> Property Name<br>Stoltenberg          |  |  | <sup>6</sup> Well Number<br>2  |
| <sup>7</sup> OGRID No.<br>263940        |  | <sup>8</sup> Operator Name<br>Sovereign Eagle, LLC |  |  | <sup>9</sup> Elevation<br>3307 |

<sup>10</sup> Surface Location

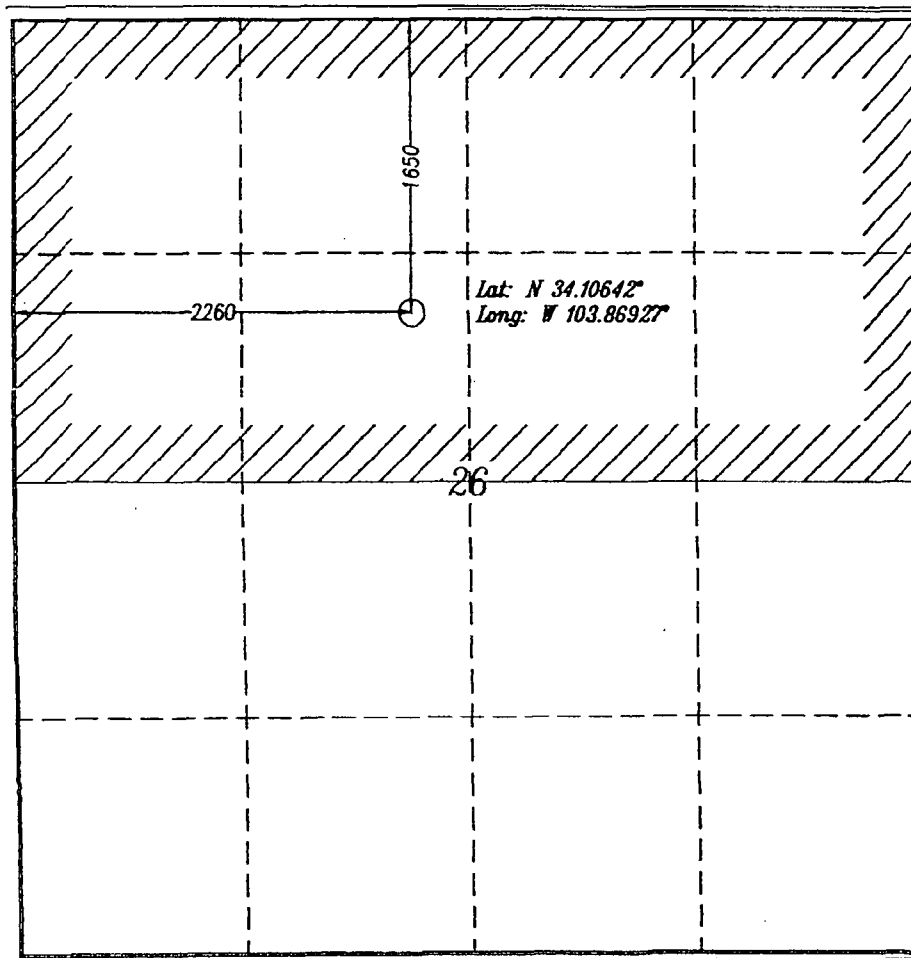
| UL or lot no. | Section | Township | Range | Lot Idn | Feet from the | North/South line | Feet from the | East/West line | County    |
|---------------|---------|----------|-------|---------|---------------|------------------|---------------|----------------|-----------|
| F             | 26      | 2 S      | 29 E  |         | 1650          | North            | 2260          | West           | Roosevelt |

<sup>11</sup> Bottom Hole Location If Different From Surface

| UL or lot no. | Section | Township | Range | Lot Idn | Feet from the | North/South line | Feet from the | East/West line | County |
|---------------|---------|----------|-------|---------|---------------|------------------|---------------|----------------|--------|
|               |         |          |       |         |               |                  |               |                |        |

|                                      |                               |                                  |                         |
|--------------------------------------|-------------------------------|----------------------------------|-------------------------|
| <sup>12</sup> Dedicated Acres<br>320 | <sup>13</sup> Joint or Infill | <sup>14</sup> Consolidation Code | <sup>15</sup> Order No. |
|--------------------------------------|-------------------------------|----------------------------------|-------------------------|

No allowable will be assigned to this completion until all interests have been consolidated or a non-standard unit has been approved by the division.



<sup>17</sup> OPERATOR CERTIFICATION

I hereby certify that the information contained herein is true and complete to the best of my knowledge and belief, and that this organization either owns a working interest or undivided mineral interest in the land including the proposed bottom hole location or has a right to drill this well at this location pursuant to a contract with an owner of such a mineral or working interest, or to a voluntary pooling agreement or a compulsory pooling order heretofore entered by the division.

Signature: Paul Ragsdale Date: 10/21/14

Printed Name: PAUL RAGSDALE

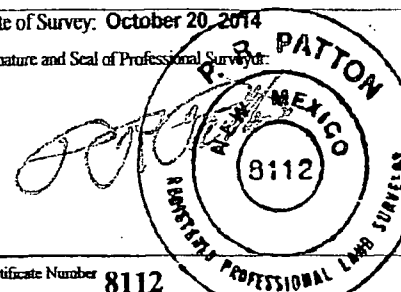
E-mail Address: pragsdale@stetannm.com

<sup>18</sup> SURVEYOR CERTIFICATION

I hereby certify that the well location shown on this plat was plotted from field notes of actual surveys made by me or under my supervision, and that the same is true and correct to the best of my belief.

Date of Survey: October 20, 2014

Signature and Seal of Professional Surveyor:



Certificate Number 8112

MAY 27 2015

OCT 23 2014