

District I  
1625 N. French Dr., Hobbs, NM 88240  
Phone: (575) 393-6161 Fax: (575) 393-0720  
District II  
811 S. First St., Artesia, NM 88210  
Phone: (575) 748-1283 Fax: (575) 748-9720  
District III  
1000 Rio Brazos Road, Aztec, NM 87410  
Phone: (505) 334-6178 Fax: (505) 334-6170  
District IV  
1220 S. St. Francis Dr., Santa Fe, NM 87505  
Phone: (505) 476-3460 Fax: (505) 476-3462

State of New Mexico  
Energy, Minerals & Natural Resources  
Department  
OIL CONSERVATION DIVISION  
1220 South St. Francis Dr.  
Santa Fe, NM 87505

HOBBS OCD

JUN 01 2015

RECEIVED

FORM C-102

Revised August 1, 2011

Submit one copy to appropriate

District Office

☐ AMENDED REPORT

WELL LOCATION AND ACREAGE DEDICATION PLAT

<sup>1</sup> API Number <b>30-025-42607</b>	<sup>2</sup> Pool Code <b>97900</b>	<sup>3</sup> Pool Name <b>RED HILLS; UPPER BONE SPRING SHALE</b>
<sup>4</sup> Property Code <b>314874</b>	<sup>5</sup> Property Name <b>LUCKY 13 FED COM</b>	<sup>6</sup> Well Number <b>#2H</b>
<sup>7</sup> OGRID No. <b>7377</b>	<sup>8</sup> Operator Name <b>EOG RESOURCES, INC.</b>	<sup>9</sup> Elevation <b>3350'</b>

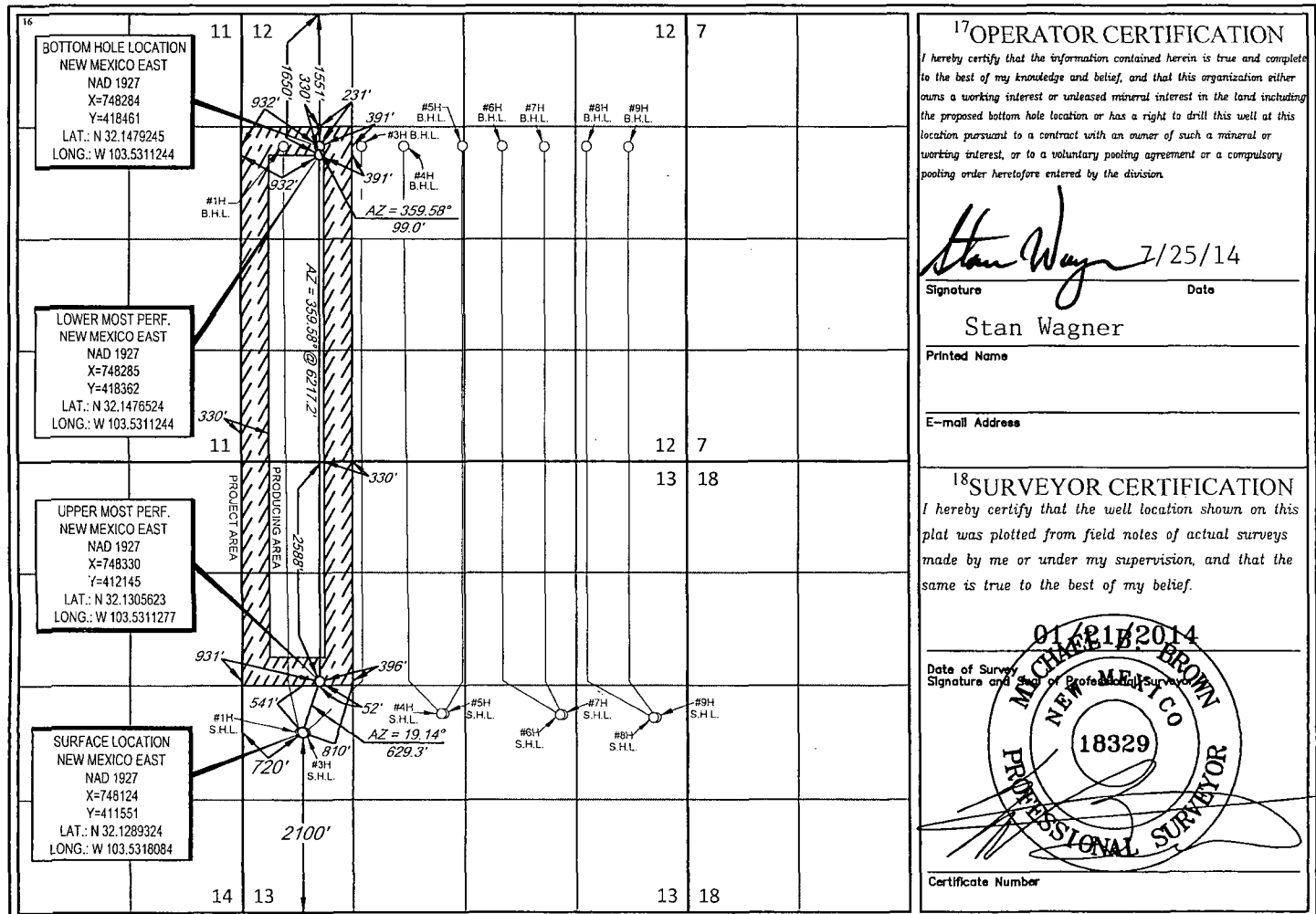
<sup>10</sup>Surface Location

UL or lot no.	Section	Township	Range	Lot Idn	Feet from the	North/South line	Feet from the	East/West line	County
<b>L</b>	<b>13</b>	<b>25-S</b>	<b>33-E</b>	<b>-</b>	<b>2100'</b>	<b>SOUTH</b>	<b>720'</b>	<b>WEST</b>	<b>LEA</b>

UL or lot no.	Section	Township	Range	Lot Idn	Feet from the	North/South line	Feet from the	East/West line	County
<b>E</b>	<b>12</b>	<b>25-S</b>	<b>33-E</b>	<b>-</b>	<b>1551'</b>	<b>NORTH</b>	<b>932'</b>	<b>WEST</b>	<b>LEA</b>

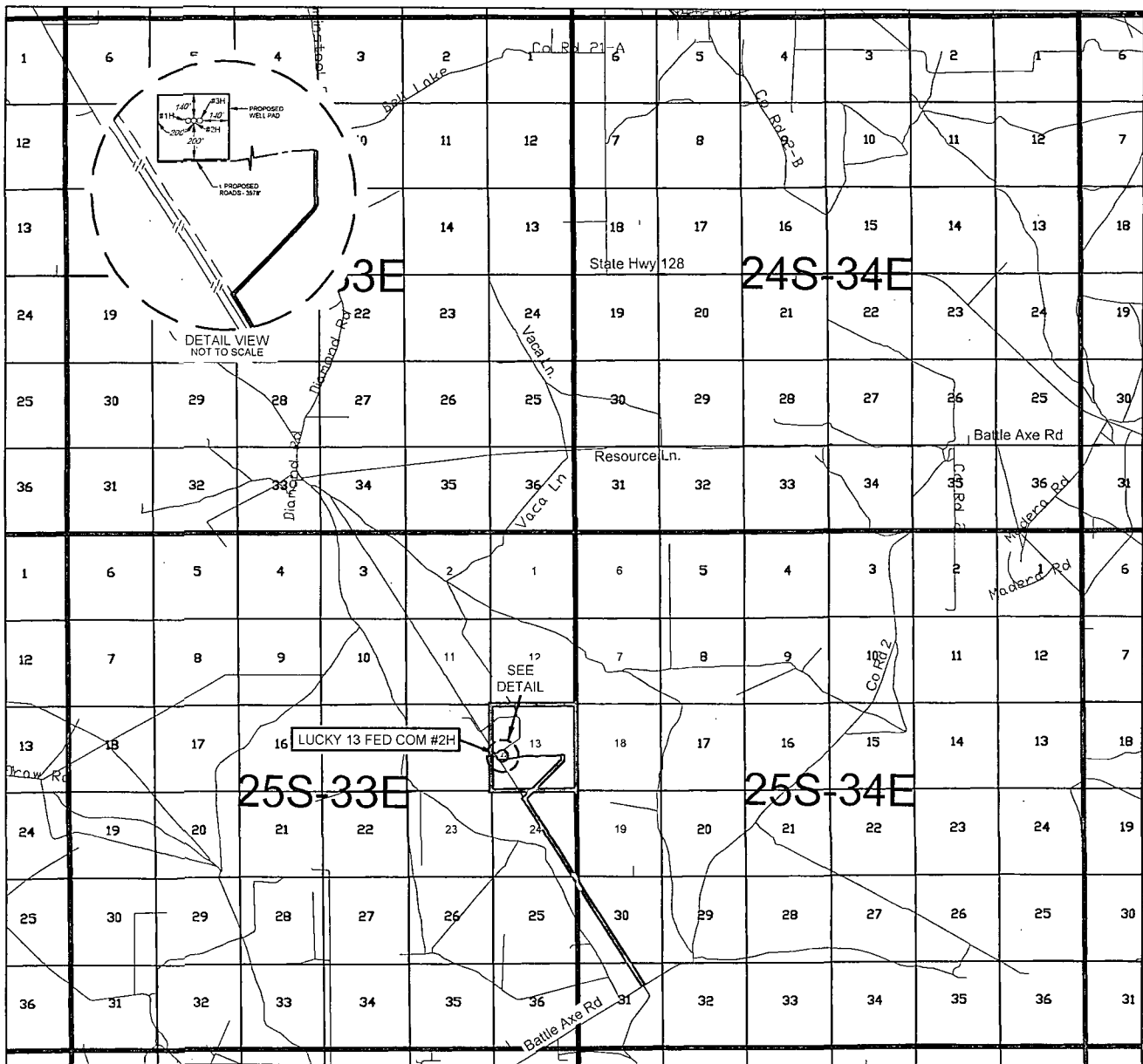
<sup>12</sup> Dedicated Acres <b>200.00</b>	<sup>13</sup> Joint or Infill	<sup>14</sup> Consolidation Code	<sup>15</sup> Order No.
--	-------------------------------	----------------------------------	-------------------------

No allowable will be assigned to this completion until all interests have been consolidated or a non-standard unit has been approved by the division.



JUN 03 2015

# EXHIBIT 2 VICINITY MAP



LEASE NAME & WELL NO.: LUCKY 13 FED COM #2H

SECTION 13 TWP 25-S RGE 33-E SURVEY N.M.P.M.

COUNTY LEA STATE NM

DESCRIPTION 2100' FSL & 720' FWL

DISTANCE & DIRECTION FROM INT. OF NM-18 N & NM-128, GO WEST ON NM-128 W  $\pm 14.1$  MILES, THENCE SOUTHWEST (LEFT) ON BATTLE AXE RD.  $\pm 0.3$  MILES, THENCE WEST (RIGHT) ON BATTLE AXE RD.  $\pm 2.6$  MILES, THENCE NORTHWEST (RIGHT) ON BATTLE AXE RD.  $\pm 7.2$  MILES, THENCE NORTHWEST (RIGHT) ON LEASE RD.  $\pm 2.6$  MILES, THENCE NORTHEAST (RIGHT) ON LEASE RD.  $\pm 0.7$  MILES, THENCE WEST (LEFT) ON PROPOSED RD.  $\pm 1.5$  MILES ( $\pm 3978$  FEET) TO A POINT SOUTH OF THE LOCATION.

THIS EASEMENT/SERVITUDE LOCATION SHOWN HEREON HAS BEEN SURVEYED ON THE GROUND UNDER MY SUPERVISION AND PREPARED ACCORDING TO THE EVIDENCE FOUND AT THE TIME OF SURVEY, AND DATA PROVIDED BY EOG RESOURCES, INC. THIS CERTIFICATION IS MADE AND LIMITED TO THOSE PERSONS OR ENTITIES SHOWN ON THE FACE OF THIS PLAT AND IS NON-TRANSFERABLE. THIS SURVEY IS CERTIFIED FOR THIS TRANSACTION ONLY.

ALL BEARINGS, DISTANCES, AND COORDINATE VALUES CONTAINED HEREON ARE GRID BASED UPON THE NEW MEXICO STATE PLANE COORDINATE SYSTEM, EAST ZONE OF THE NORTH AMERICAN DATUM 1927, U.S. SURVEY FEET.



SCALE: 1" = 10000'

0' 5000' 10000'



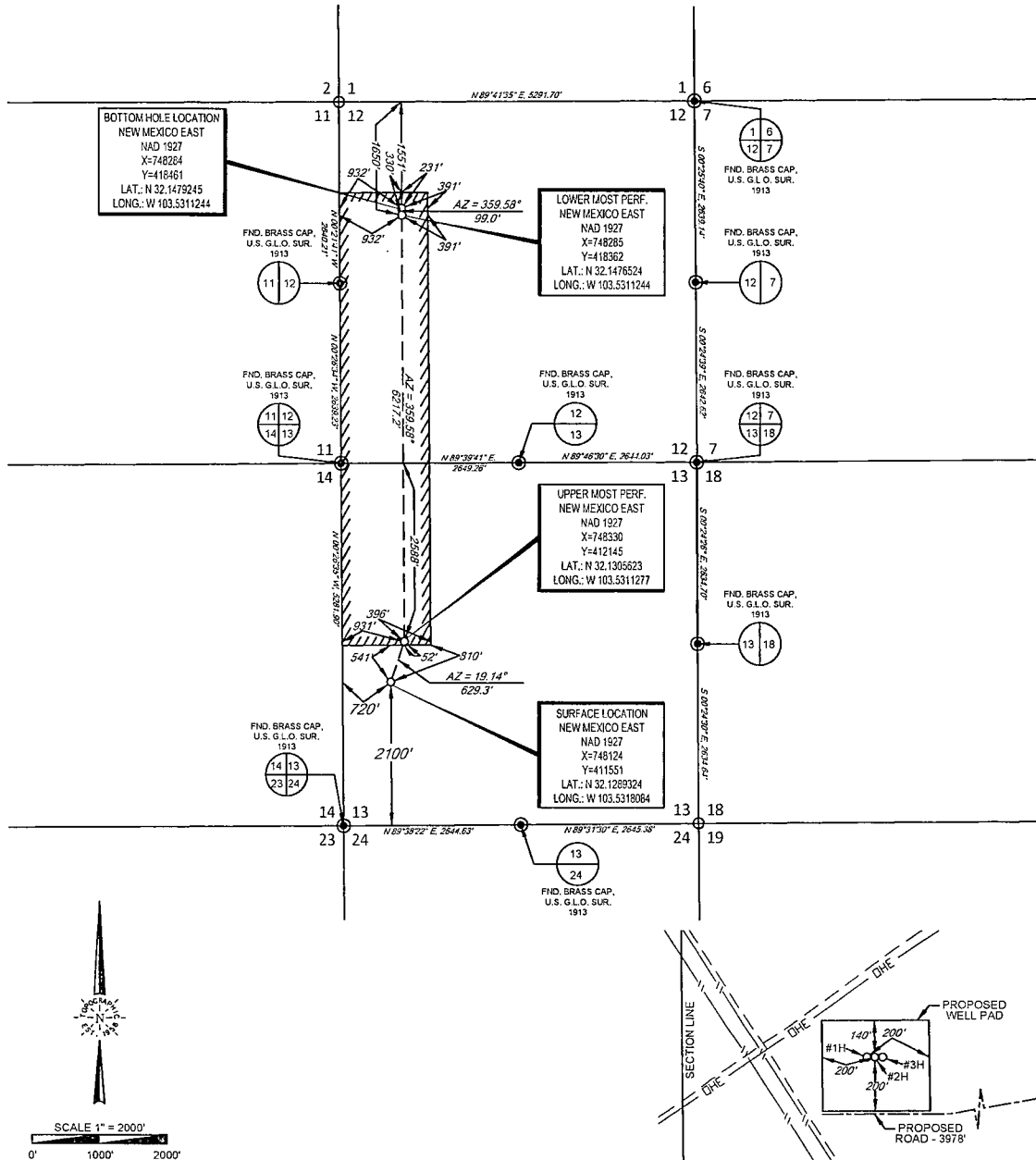
**TOPOGRAPHIC**  
LOYALTY INNOVATION LEGACY

1400 EVERMAN PARKWAY, Ste. 197 • FT. WORTH, TEXAS 76140  
TELEPHONE: (817) 744-7512 • FAX (817) 744-7548  
2903 NORTH BIG SPRING • MIDLAND, TEXAS 79705  
TELEPHONE: (432) 682-1653 OR (800) 767-1653 • FAX (432) 682-1743  
WWW.TOPOGRAPHIC.COM



## EXHIBIT 2A

SECTION 13, TOWNSHIP 25 SOUTH, RANGE 33 EAST, N.M.P.M.  
LEA COUNTY, NEW MEXICO



LEASE NAME & WELL NO.: LUCKY 13 FED COM #2H  
SECTION 13 TWP. 25-S RGE 33-E SURVEY N.M.P.M.  
COUNTY LEA STATE NM  
DESCRIPTION 2100' FSL & 720' FWL

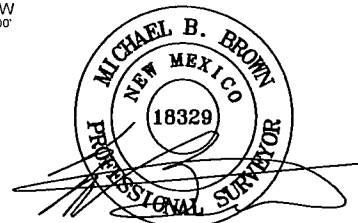
DISTANCE & DIRECTION FROM INT. OF NM-18 N & NM-128, GO WEST ON  
NM-128 W ±14.1 MILES, THENCE SOUTHWEST (LEFT) ON BATTLE AXE RD.  
±0.3 MILES, THENCE WEST (RIGHT) ON BATTLE AXE RD. ±2.6 MILES,  
THENCE NORTHWEST (RIGHT) ON BATTLE AXE RD. ±7.2 MILES, THENCE  
NORTHWEST (RIGHT) ON LEASE RD. ±2.6 MILES, THENCE NORTHEAST (RIGHT)  
ON LEASE RD. ±0.7 MILES, THENCE WEST (LEFT) ON PROPOSED RD. ±0.8 MILES  
(±3978 FEET) TO A POINT SOUTH OF THE LOCATION.

ALL BEARINGS, DISTANCES, AND COORDINATE VALUES CONTAINED HEREON ARE GRID  
BASED UPON THE NEW MEXICO STATE PLANE COORDINATE SYSTEM, EAST ZONE OF THE  
NORTH AMERICAN DATUM 1927, U.S. SURVEY FEET

THIS EASEMENT/SERVITUDE LOCATION SHOWN HEREON HAS BEEN SURVEYED ON THE GROUND  
UNDER MY SUPERVISION AND PREPARED ACCORDING TO THE EVIDENCE FOUND AT THE TIME OF  
SURVEY, AND DATA PROVIDED BY EOG RESOURCES, INC. THIS CERTIFICATION IS MADE AND LIMITED  
TO THOSE PERSONS OR ENTITIES SHOWN ON THE FACE OF THIS PLAT AND IS NON-TRANSFERABLE.  
THIS SURVEY IS CERTIFIED FOR THIS TRANSACTION ONLY.

ORIGINAL DOCUMENT SIZE: 8.5" X 14"

DETAIL VIEW  
SCALE: 1" = 500'



Michael Blake Brown, P.S. No. 18329  
MARCH 12, 2014



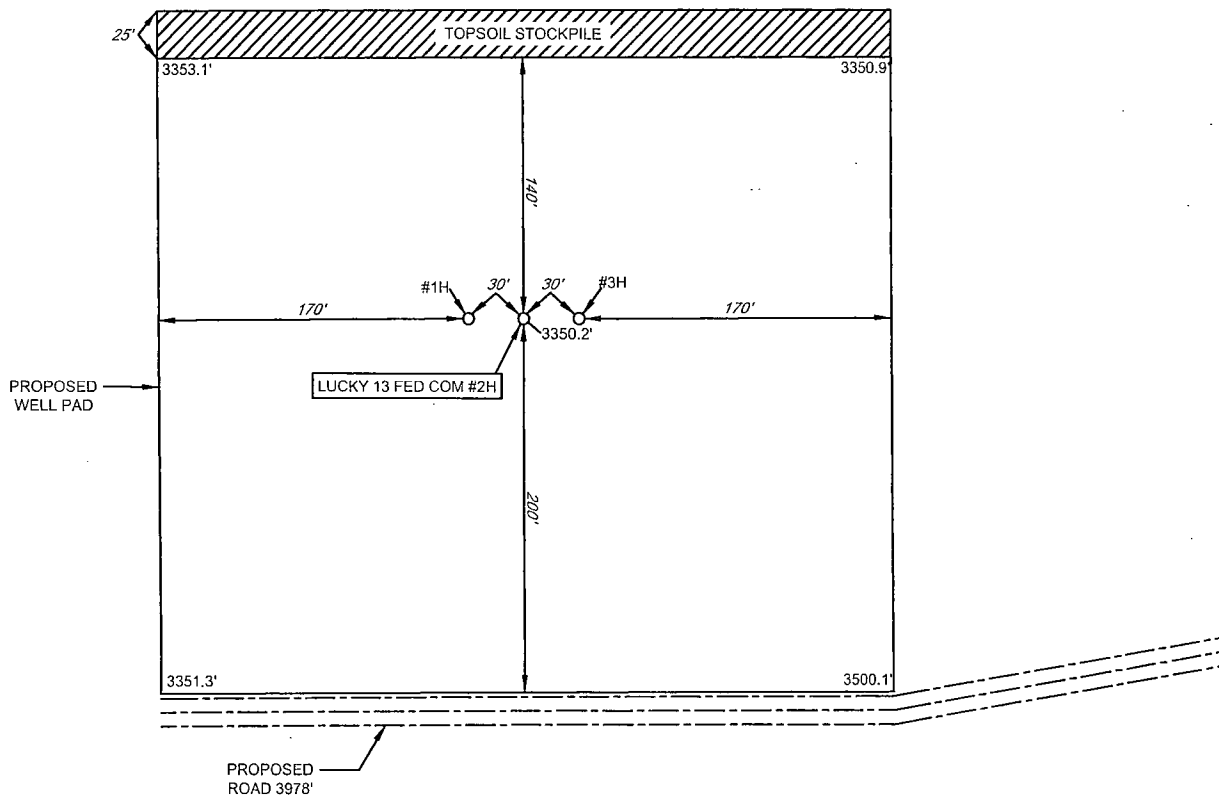
1400 EVERMAN PARKWAY, Ste. 197 • FT. WORTH, TEXAS 76140  
TELEPHONE: (817) 744-7512 • FAX (817) 744-7548  
2903 NORTH BIG SPRING • MIDLAND, TEXAS 79705  
TELEPHONE: (432) 682-1653 OR (800) 767-1653 • FAX (432) 682-1743  
WWW.TOPOGRAPHIC.COM



# EXHIBIT 2B

SECTION 13, TOWNSHIP 25 SOUTH, RANGE 33 EAST, N.M.P.M.  
LEA COUNTY, NEW MEXICO

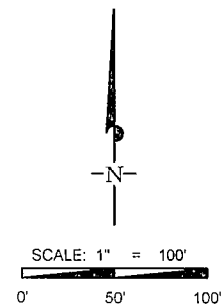
DETAIL VIEW  
SCALE: 1" = 100'



LEASE NAME & WELL NO.: LUCKY 13 FED COM #2H  
#2H LATITUDE N 32.1289324 #2H LONGITUDE W 103.5318084

## LEGEND

== == == == EXISTING ROAD  
— SECTION LINE  
— — — — EXISTING PIPELINE



ALL BEARINGS, DISTANCES, AND COORDINATE VALUES CONTAINED HEREON ARE GRID BASED UPON THE NEW MEXICO STATE PLANE COORDINATE SYSTEM, EAST ZONE OF THE NORTH AMERICAN DATUM 1927, U.S. SURVEY FEET

THIS PROPOSED PAD SITE LOCATION SHOWN HEREON HAS BEEN SURVEYED ON THE GROUND UNDER MY SUPERVISION AND PREPARED ACCORDING TO THE EVIDENCE FOUND AT THE TIME OF SURVEY, AND DATA PROVIDED BY EOG RESOURCES, INC. THIS CERTIFICATION IS MADE AND LIMITED TO THOSE PERSONS OR ENTITIES SHOWN ON THE FACE OF THIS PLAT AND IS NON-TRANSFERABLE. THIS SURVEY IS CERTIFIED FOR THIS TRANSACTION ONLY.



**TOPOGRAPHIC**  
LOYALTY INNOVATION LEGACY

1400 EVERMAN PARKWAY, Ste. 197 • FT. WORTH, TEXAS 76140  
TELEPHONE: (817) 744-7512 • FAX (817) 744-7548  
2903 NORTH BIG SPRING • MIDLAND, TEXAS 79705  
TELEPHONE: (432) 682-1653 OR (800) 767-1653 • FAX (432) 682-1743  
WWW.TOPOGRAPHIC.COM

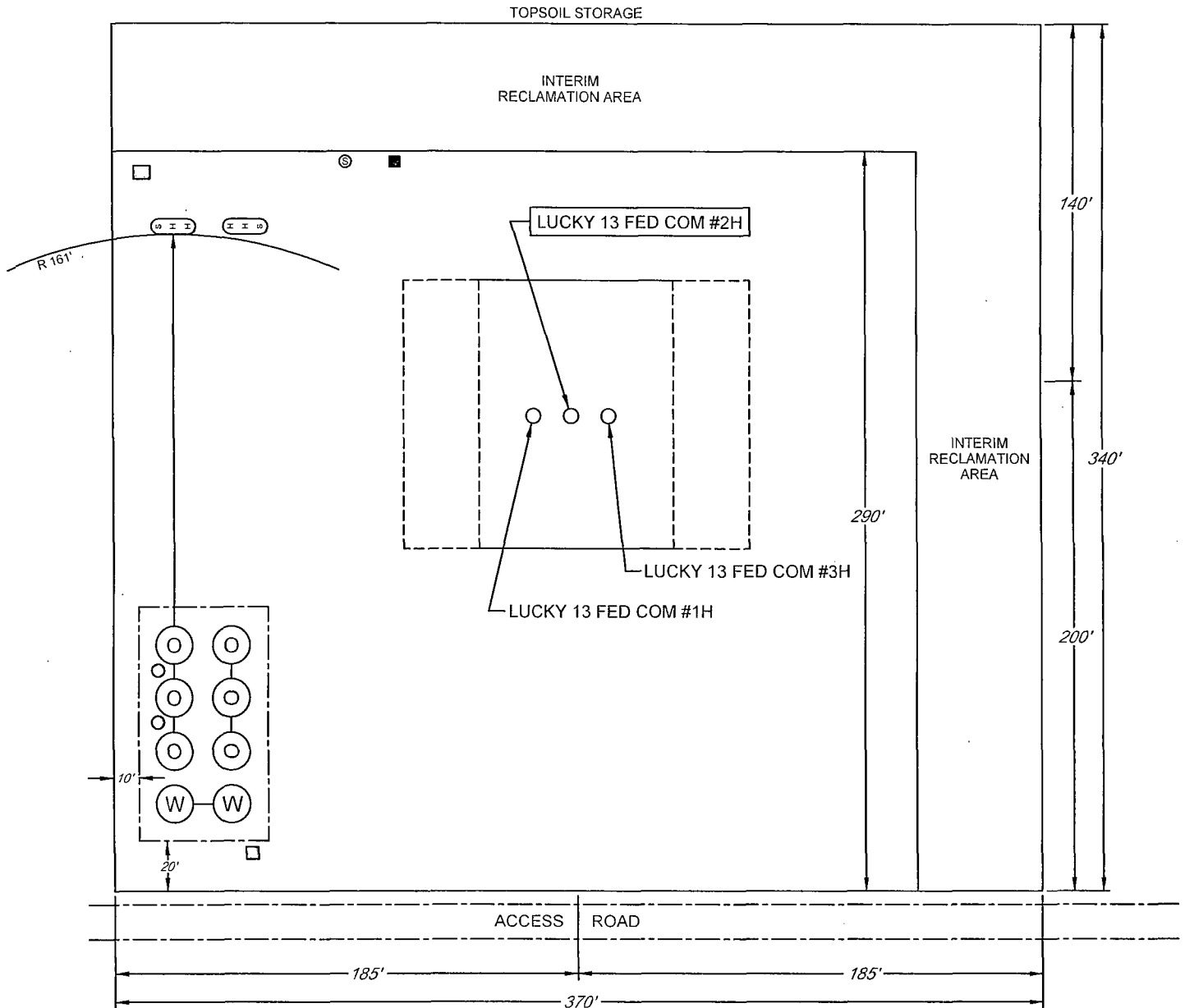
ORIGINAL DOCUMENT SIZE: 8.5" X 11"

# EXHIBIT 2C

## RECLAMATION AND FACILITY DIAGRAM - PRODUCTION FACILITIES DIAGRAM

SECTION 13, TOWNSHIP 25 SOUTH, RANGE 33 EAST, N.M.P.M.  
LEA COUNTY, NEW MEXICO

DETAIL VIEW  
SCALE: 1" = 60'



LEASE NAME & WELL NO.: LUCKY 13 FED COM #2H  
#2H LATITUDE N 32.1289324 #2H LONGITUDE W 103.5318084

### LEGEND

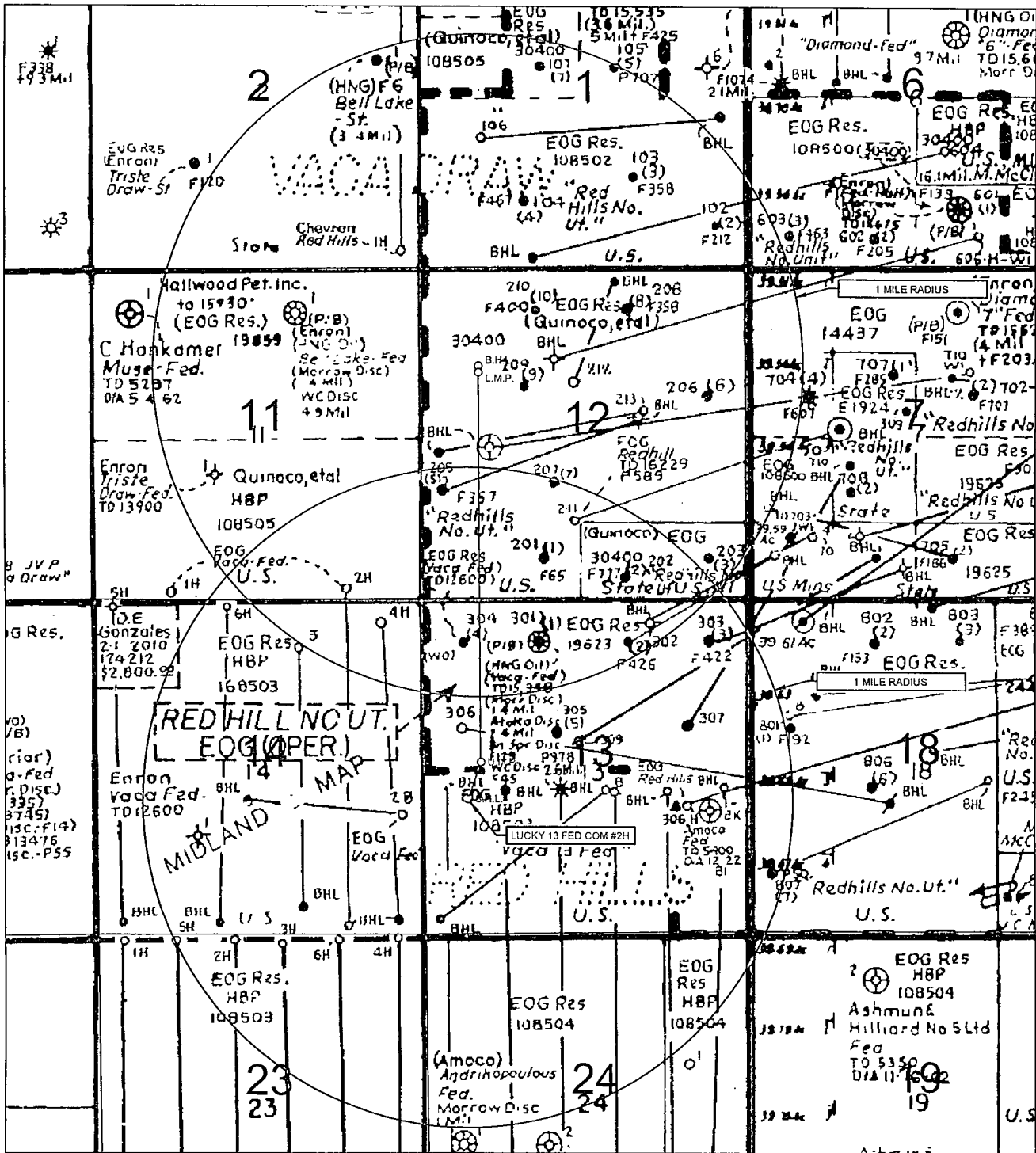
	500 BBL OIL TANK		FLARE SEPARATOR
	500 BBL WATER TANK		VRU
	36 x 15 HEATER/ SEPARATOR		48 X 25 VRT
			FP FLARE
			OP FLARE

# EXHIBIT 3



**EOG resources, inc.**

SECTION 13, TOWNSHIP 25 SOUTH, RANGE 33 EAST, N.M.P.M.  
LEA COUNTY, NEW MEXICO



LEASE NAME & WELL NO.: LUCKY 13 FED COM #2H

#2H LATITUDE N 32.1289324

#2H LONGITUDE W 103.5318084

SCALE: NTS

## LEGEND

- EXISTING ROAD
- SECTION LINE
- EXISTING PIPELINE
- OVERHEAD ELECTRIC
- FENCE LINE
- LATERAL



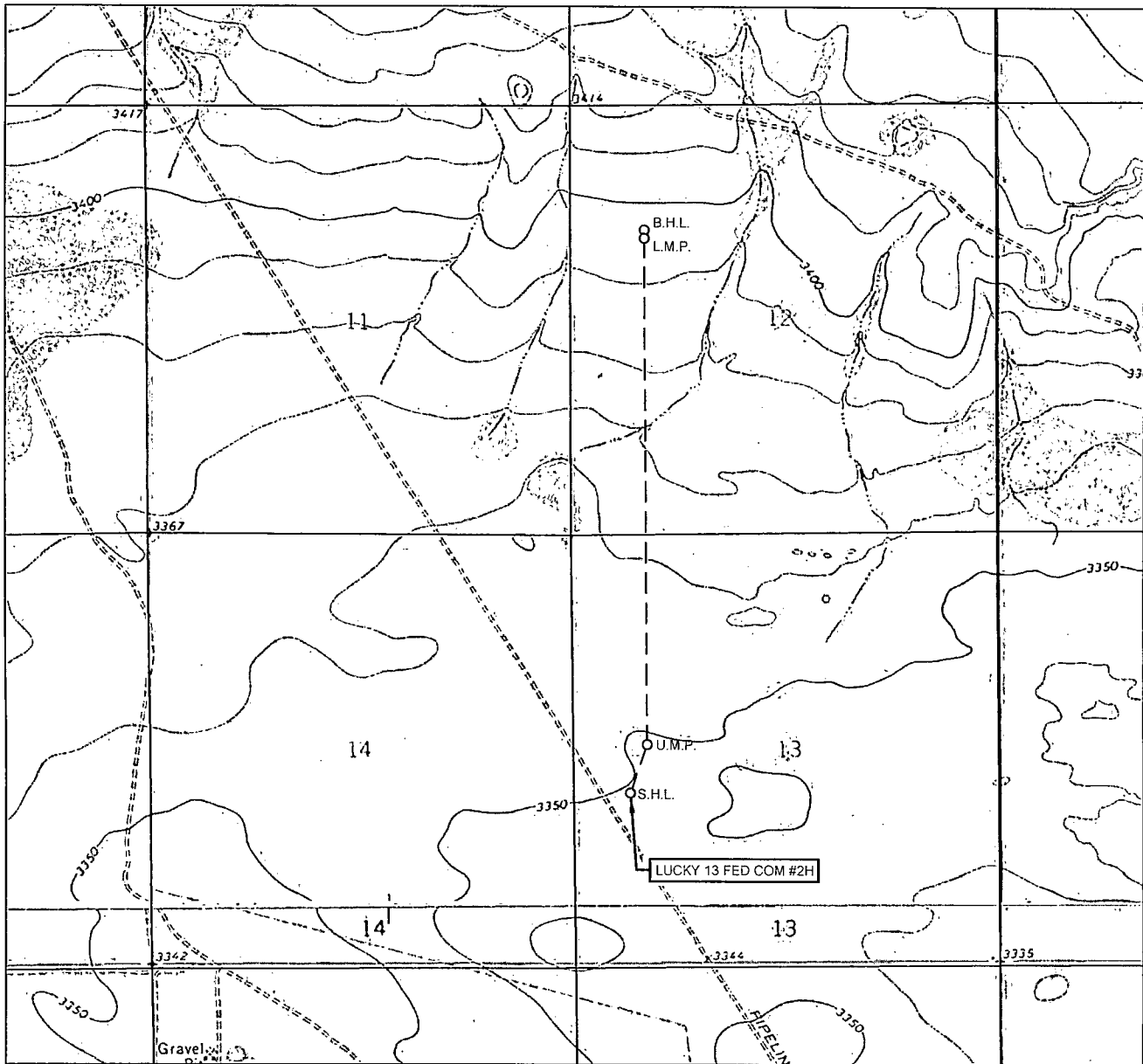
**TOPOGRAPHIC**  
LOYALTY INNOVATION LEGACY

1400 EVERMAN PARKWAY, Ste. 197 • FT. WORTH, TEXAS 76140  
TELEPHONE: (817) 744-7512 • FAX (817) 744-7548  
2903 NORTH BIG SPRING • MIDLAND, TEXAS 79705  
TELEPHONE: (432) 682-1653 OR (800) 767-1653 • FAX (432) 682-1743  
WWW.TOPOGRAPHIC.COM

ALL BEARINGS, DISTANCES, AND COORDINATE VALUES CONTAINED HEREON ARE GRID BASED UPON THE NEW MEXICO STATE PLANE COORDINATE SYSTEM, EAST ZONE OF THE NORTH AMERICAN DATUM 1927, U.S. SURVEY FEET

THIS EASEMENT/SERVITUDE LOCATION SHOWN HEREON HAS BEEN SURVEYED ON THE GROUND UNDER MY SUPERVISION AND PREPARED ACCORDING TO THE EVIDENCE FOUND AT THE TIME OF SURVEY, AND DATA PROVIDED BY EOG RESOURCES, INC. THIS CERTIFICATION IS MADE AND LIMITED TO THOSE PERSONS OR ENTITIES SHOWN ON THE FACE OF THIS PLAT AND IS NON-TRANSFERABLE. THIS SURVEY IS CERTIFIED FOR THIS TRANSACTION ONLY.

# LOCATION & ELEVATION VERIFICATION MAP



LEASE NAME & WELL NO.: LUCKY 13 FED COM #2H

SECTION 13 TWP 25-S RGE 33-E SURVEY N.M.P.M.  
 COUNTY LEA STATE NM ELEVATION 3350'  
 DESCRIPTION 2100' FSL & 720' FWL

LATITUDE N 32.1289324 LONGITUDE W 103.5318084



SCALE: 1" = 2000'  
 0' 1000' 2000'



**TOPOGRAPHIC**  
 LOYALTY INNOVATION LEGACY

1400 EVERMAN PARKWAY, Ste. 197 • FT. WORTH, TEXAS 76140  
 TELEPHONE: (817) 744-7512 • FAX (817) 744-7548  
 2903 NORTH BIG SPRING • MIDLAND, TEXAS 79705  
 TELEPHONE: (432) 682-1653 OR (800) 767-1653 • FAX (432) 682-1743  
 WWW.TOPOGRAPHIC.COM

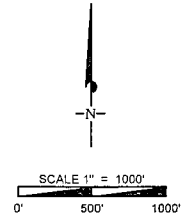
THIS EASEMENT/SERVITUDE LOCATION SHOWN HEREON HAS BEEN SURVEYED ON THE GROUND UNDER MY SUPERVISION AND PREPARED ACCORDING TO THE EVIDENCE FOUND AT THE TIME OF SURVEY, AND DATA PROVIDED BY EOG RESOURCES, INC. THIS CERTIFICATION IS MADE AND LIMITED TO THOSE PERSONS OR ENTITIES SHOWN ON THE FACE OF THIS PLAT AND IS NON-TRANSFERABLE. THIS SURVEY IS CERTIFIED FOR THIS TRANSACTION ONLY.

ALL BEARINGS, DISTANCES, AND COORDINATE VALUES CONTAINED HEREON ARE GRID BASED UPON THE NEW MEXICO STATE PLANE COORDINATE SYSTEM, EAST ZONE OF THE NORTH AMERICAN DATUM 1927, U.S. SURVEY FEET.

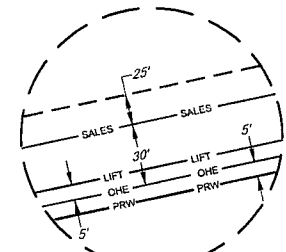
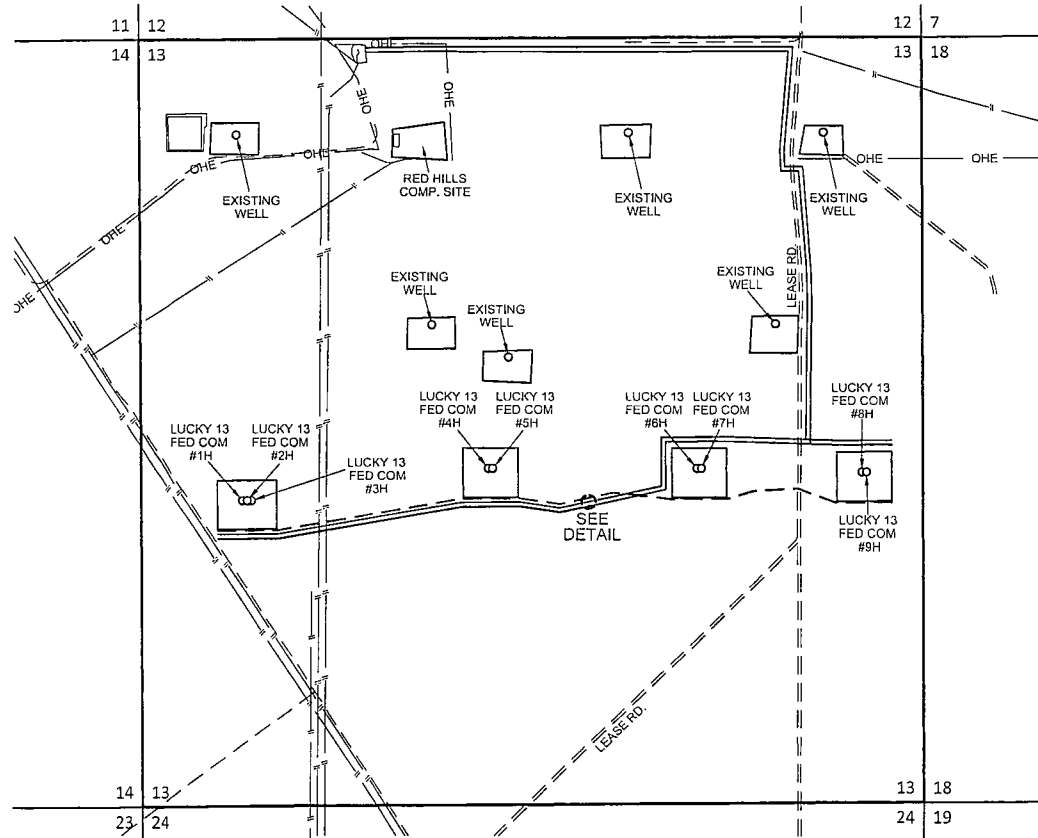
# EXHIBIT 5

SECTION 13, TOWNSHIP 25-S, RANGE 33-E, N.M.P.M.  
LEA COUNTY, NEW MEXICO

## LUCKY 13 FED COM #1H-#9H INFRASTRUCTURE MAP



---	PROPOSED ROAD
---	TOTAL FOOTAGES TO EACH PAD SITE
---	LUCKY 13 FED COM #1H, #2H, & #3H .....3,578 FT
---	LUCKY 13 FED COM #4H & #5H .....2,293 FT
---	LUCKY 13 FED COM #6H & #7H .....872 FT
---	LUCKY 13 FED COM #8H & #9H .....640 FT
---	1-1/2" POLY GAS LIFT LINE
---	TOTAL FOOTAGES TO EACH PAD SITE
---	(WORKING PRESSURE 75-125 PSI)
---	LUCKY 13 FED COM #1H, #2H, & #3H .....10,127 FT
---	LUCKY 13 FED COM #4H & #5H .....8,442 FT
---	LUCKY 13 FED COM #6H & #7H .....5,584 FT
---	LUCKY 13 FED COM #8H & #9H .....5,299 FT
---	ELECTRIC LINE
---	TOTAL FOOTAGES TO EACH PAD SITE
---	LUCKY 13 FED COM #1H, #2H, & #3H .....10,127 FT
---	LUCKY 13 FED COM #4H & #5H .....8,442 FT
---	LUCKY 13 FED COM #6H & #7H .....5,584 FT
---	LUCKY 13 FED COM #8H & #9H .....5,299 FT
---	2-4" POLY BWD LINES
---	TOTAL FOOTAGES TO EACH PAD SITE
---	(WORKING PRESSURE 75-125 PSI)
---	LUCKY 13 FED COM #1H, #2H, & #3H .....10,127 FT
---	LUCKY 13 FED COM #4H & #5H .....8,442 FT
---	LUCKY 13 FED COM #6H & #7H .....5,584 FT
---	LUCKY 13 FED COM #8H & #9H .....5,299 FT
---	4" GAS SALES LINE
---	TOTAL FOOTAGES TO EACH PAD SITE
---	(WORKING PRESSURE 75-125 PSI)
---	LUCKY 13 FED COM #1H, #2H, & #3H .....10,006 FT
---	LUCKY 13 FED COM #4H & #5H .....8,321 FT
---	LUCKY 13 FED COM #6H & #7H .....5,558 FT
---	LUCKY 13 FED COM #8H & #9H .....5,233 FT



DETAIL VIEW  
NOT TO SCALE

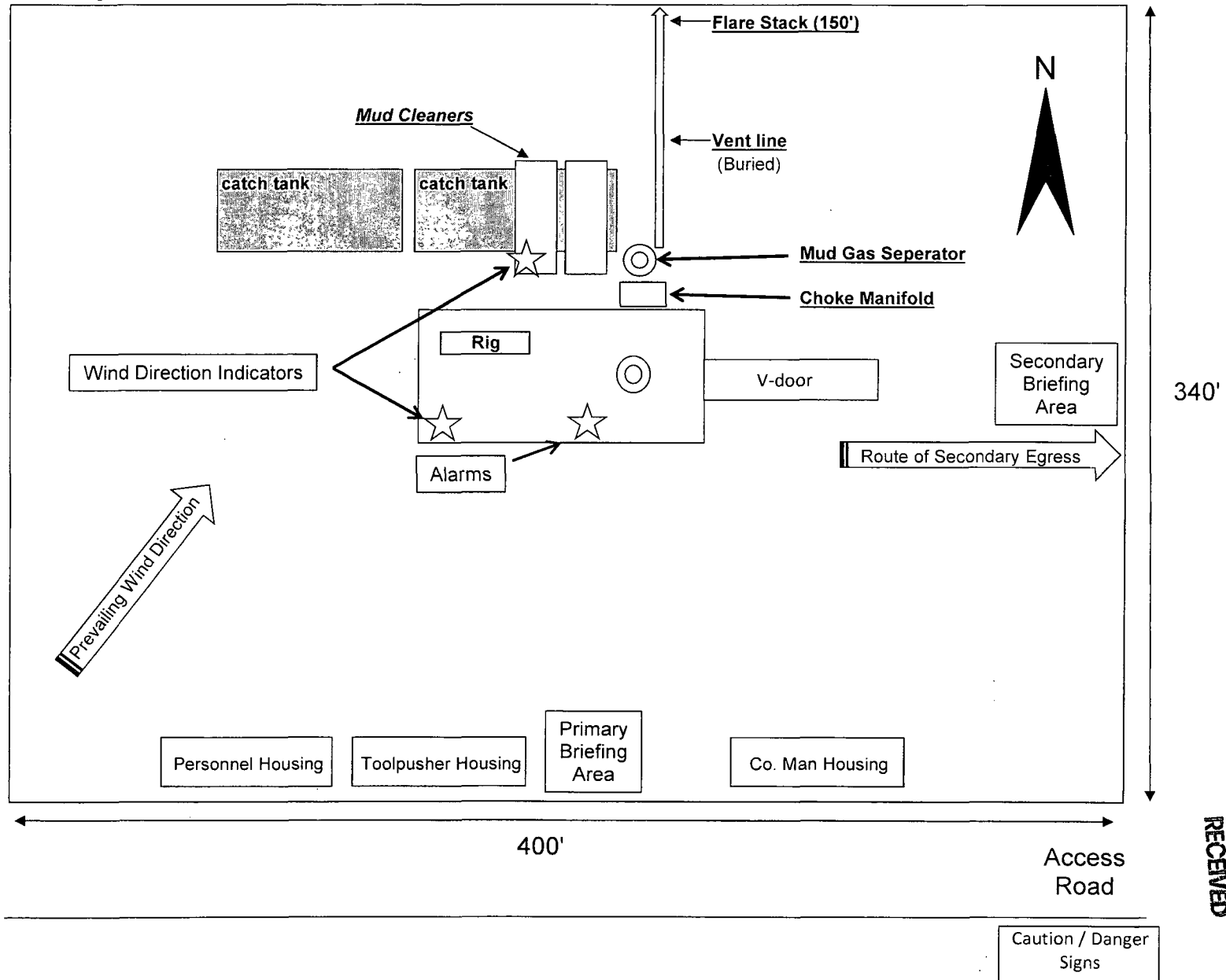


LUCKY 13 FED COM #1H - #9H INFRASTRUCTURE MAP	REVISION:	
	1-P.Y.	07/17/14
DATE:	03/17/14	
FILE:	S:\LUCKY13FEDCOM\HARR INFRASTRUCTURE MAP 2014	
DRAWN BY:	S.V.	
SHEET:	1 OF 1	



Exhibit 4  
EOG Resources  
Lucky 13 Fed Com #2H

Well Site Diagram



RECEIVED

JUN 01 2015

HOBBS OCD