

HOBBS OCD

JUN 03 2015

District I
1625 N. French Dr., Hobbs, NM 88240
Phone: (575) 393-6161 Fax: (575) 393-0720
District II
811 S. First St., Artesia, NM 88210
Phone: (575) 748-1283 Fax: (575) 748-9720
District III
1000 Rio Brazos Road, Aztec, NM 87410
Phone: (505) 334-6178 Fax: (505) 334-6170
District IV
1220 S. St. Francis Dr., Santa Fe, NM 87505
Phone: (505) 476-3460 Fax: (505) 476-3462

State of New Mexico
Energy, Minerals & Natural Resources Department
OIL CONSERVATION DIVISION
1220 South St. Francis Dr.
Santa Fe, NM 87505

RECEIVED

Form C-102
Revised August 1, 2011
Submit one copy to appropriate
District Office

☐ AMENDED REPORT

WELL LOCATION AND ACREAGE DEDICATION PLAT

¹ API Number 30-025-42619	² Pool Code 49460 49480	³ Pool Name Paduca; Delaware, North
⁴ Property Code 300635	⁵ Property Name COTTON DRAW UNIT	⁶ Well Number 252H
⁷ OGRID No. 6137	⁸ Operator Name DEVON ENERGY PRODUCTION COMPANY, L.P.	⁹ Elevation 3447.7

¹⁰ Surface Location

UL or lot no.	Section	Township	Range	Lot Idn	Feet from the	North/South line	Feet from the	East/West line	County
B	7	25 S	32 E		100	NORTH	1780	EAST	LEA

¹¹ Bottom Hole Location If Different From Surface

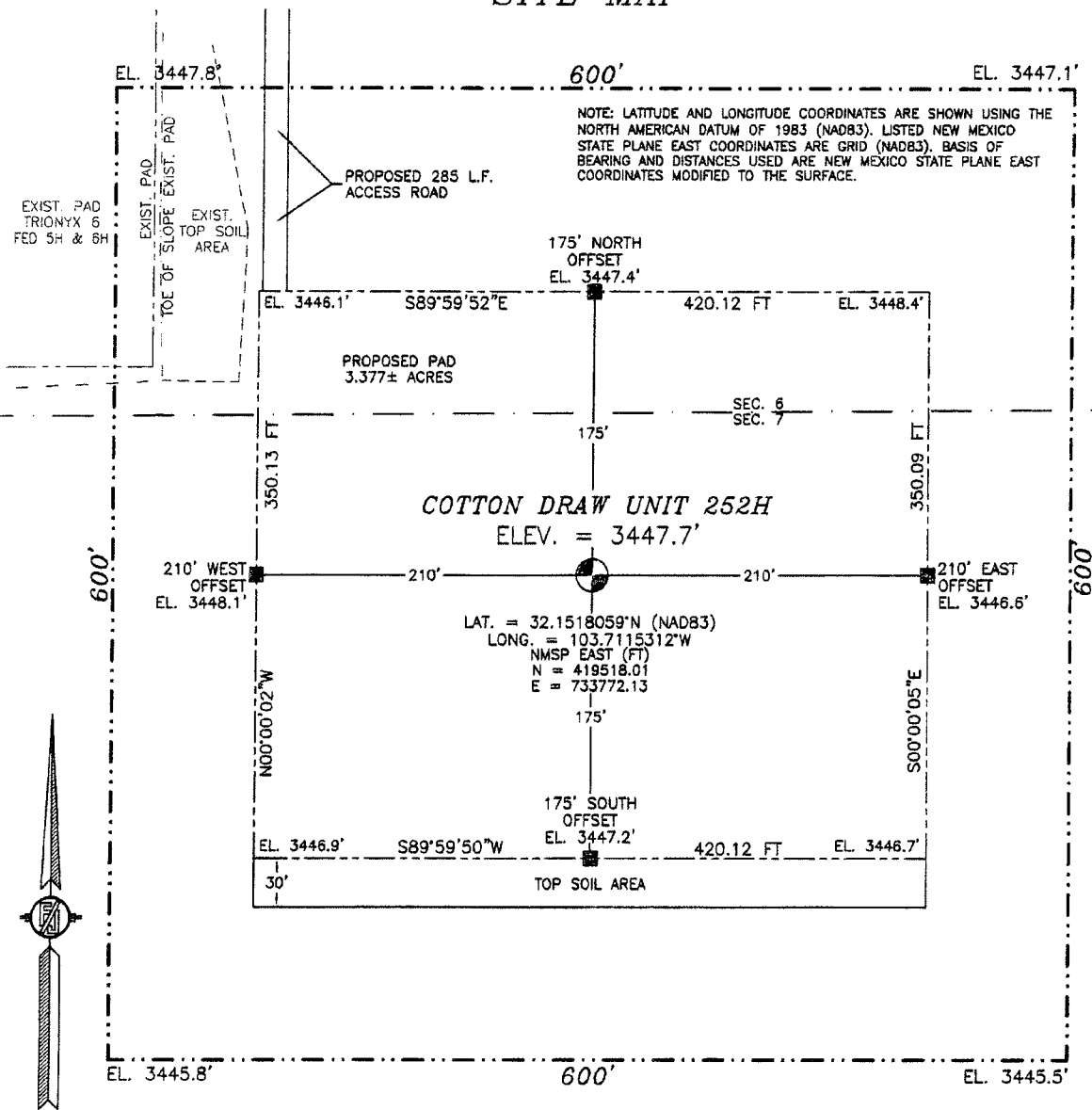
UL or lot no.	Section	Township	Range	Lot Idn	Feet from the	North/South line	Feet from the	East/West line	County
O	7	25 S	32 E		330	SOUTH	1980	EAST	LEA

¹² Dedicated Acres 160 ac	¹³ Joint or Infill	¹⁴ Consolidation Code	¹⁵ Order No.
--	-------------------------------	----------------------------------	-------------------------

No allowable will be assigned to this completion until all interests have been consolidated or a non-standard unit has been approved by the division.

<p>N89°42'07"E 2662.90 FT</p> <p>NW CORNER SEC. 7 LAT. = 32.1520816°N LONG. = 103.7229789°W NMSP EAST (FT) N = 419598.07 E = 730229.30</p> <p>LOT 1</p>		<p>N89°35'57"E 2660.68 FT</p> <p>N/4 CORNER SEC. 7 LAT. = 32.1520779°N LONG. = 103.7143746°W NMSP EAST (FT) N = 419611.92 E = 733891.58</p> <p>LOT 2</p>		<p>1780'</p> <p>SURFACE LOCATION</p> <p>NE CORNER SEC. 7 LAT. = 32.1520868°N LONG. = 103.7057795°W NMSP EAST (FT) N = 419630.53 E = 735551.61</p> <p>LOT 3</p>	
<p>100'</p> <p>W/4 CORNER SEC. 7 LAT. = 32.1448285°N LONG. = 103.7229921°W NMSP EAST (FT) N = 416959.45 E = 730239.54</p> <p>LOT 4</p>		<p>100'</p> <p>E/4 CORNER SEC. 7 LAT. = 32.1447996°N LONG. = 103.7058075°W NMSP EAST (FT) N = 416979.52 E = 735558.39</p> <p>LOT 5</p>		<p>100'</p> <p>SE CORNER SEC. 7 LAT. = 32.1375763°N LONG. = 103.7058302°W NMSP EAST (FT) N = 414351.75 E = 735566.66</p> <p>LOT 6</p>	
<p>100'</p> <p>SW CORNER SEC. 7 LAT. = 32.1375733°N LONG. = 103.7230046°W NMSP EAST (FT) N = 414320.09 E = 730250.66</p> <p>LOT 7</p>		<p>100'</p> <p>S/4 CORNER SEC. 7 LAT. = 32.1384826°N LONG. = 103.7122244°W NMSP EAST (FT) N = 414669.96 E = 733585.57</p> <p>LOT 8</p>		<p>100'</p> <p>SW CORNER SEC. 7 LAT. = 32.1384826°N LONG. = 103.7122244°W NMSP EAST (FT) N = 414669.96 E = 733585.57</p> <p>LOT 9</p>	
<p>100'</p> <p>SW CORNER SEC. 7 LAT. = 32.1384826°N LONG. = 103.7122244°W NMSP EAST (FT) N = 414669.96 E = 733585.57</p> <p>LOT 10</p>		<p>100'</p> <p>SW CORNER SEC. 7 LAT. = 32.1384826°N LONG. = 103.7122244°W NMSP EAST (FT) N = 414669.96 E = 733585.57</p> <p>LOT 11</p>		<p>100'</p> <p>SW CORNER SEC. 7 LAT. = 32.1384826°N LONG. = 103.7122244°W NMSP EAST (FT) N = 414669.96 E = 733585.57</p> <p>LOT 12</p>	
<p>100'</p> <p>SW CORNER SEC. 7 LAT. = 32.1384826°N LONG. = 103.7122244°W NMSP EAST (FT) N = 414669.96 E = 733585.57</p> <p>LOT 13</p>		<p>100'</p> <p>SW CORNER SEC. 7 LAT. = 32.1384826°N LONG. = 103.7122244°W NMSP EAST (FT) N = 414669.96 E = 733585.57</p> <p>LOT 14</p>		<p>100'</p> <p>SW CORNER SEC. 7 LAT. = 32.1384826°N LONG. = 103.7122244°W NMSP EAST (FT) N = 414669.96 E = 733585.57</p> <p>LOT 15</p>	
<p>100'</p> <p>SW CORNER SEC. 7 LAT. = 32.1384826°N LONG. = 103.7122244°W NMSP EAST (FT) N = 414669.96 E = 733585.57</p> <p>LOT 16</p>		<p>100'</p> <p>SW CORNER SEC. 7 LAT. = 32.1384826°N LONG. = 103.7122244°W NMSP EAST (FT) N = 414669.96 E = 733585.57</p> <p>LOT 17</p>		<p>100'</p> <p>SW CORNER SEC. 7 LAT. = 32.1384826°N LONG. = 103.7122244°W NMSP EAST (FT) N = 414669.96 E = 733585.57</p> <p>LOT 18</p>	
<p>100'</p> <p>SW CORNER SEC. 7 LAT. = 32.1384826°N LONG. = 103.7122244°W NMSP EAST (FT) N = 414669.96 E = 733585.57</p> <p>LOT 19</p>		<p>100'</p> <p>SW CORNER SEC. 7 LAT. = 32.1384826°N LONG. = 103.7122244°W NMSP EAST (FT) N = 414669.96 E = 733585.57</p> <p>LOT 20</p>		<p>100'</p> <p>SW CORNER SEC. 7 LAT. = 32.1384826°N LONG. = 103.7122244°W NMSP EAST (FT) N = 414669.96 E = 733585.57</p> <p>LOT 21</p>	
<p>100'</p> <p>SW CORNER SEC. 7 LAT. = 32.1384826°N LONG. = 103.7122244°W NMSP EAST (FT) N = 414669.96 E = 733585.57</p> <p>LOT 22</p>		<p>100'</p> <p>SW CORNER SEC. 7 LAT. = 32.1384826°N LONG. = 103.7122244°W NMSP EAST (FT) N = 414669.96 E = 733585.57</p> <p>LOT 23</p>		<p>100'</p> <p>SW CORNER SEC. 7 LAT. = 32.1384826°N LONG. = 103.7122244°W NMSP EAST (FT) N = 414669.96 E = 733585.57</p> <p>LOT 24</p>	
<p>100'</p> <p>SW CORNER SEC. 7 LAT. = 32.1384826°N LONG. = 103.7122244°W NMSP EAST (FT) N = 414669.96 E = 733585.57</p> <p>LOT 25</p>		<p>100'</p> <p>SW CORNER SEC. 7 LAT. = 32.1384826°N LONG. = 103.7122244°W NMSP EAST (FT) N = 414669.96 E = 733585.57</p> <p>LOT 26</p>		<p>100'</p> <p>SW CORNER SEC. 7 LAT. = 32.1384826°N LONG. = 103.7122244°W NMSP EAST (FT) N = 414669.96 E = 733585.57</p> <p>LOT 27</p>	
<p>100'</p> <p>SW CORNER SEC. 7 LAT. = 32.1384826°N LONG. = 103.7122244°W NMSP EAST (FT) N = 414669.96 E = 733585.57</p> <p>LOT 28</p>		<p>100'</p> <p>SW CORNER SEC. 7 LAT. = 32.1384826°N LONG. = 103.7122244°W NMSP EAST (FT) N = 414669.96 E = 733585.57</p> <p>LOT 29</p>		<p>100'</p> <p>SW CORNER SEC. 7 LAT. = 32.1384826°N LONG. = 103.7122244°W NMSP EAST (FT) N = 414669.96 E = 733585.57</p> <p>LOT 30</p>	
<p>100'</p> <p>SW CORNER SEC. 7 LAT. = 32.1384826°N LONG. = 103.7122244°W NMSP EAST (FT) N = 414669.96 E = 733585.57</p> <p>LOT 31</p>		<p>100'</p> <p>SW CORNER SEC. 7 LAT. = 32.1384826°N LONG. = 103.7122244°W NMSP EAST (FT) N = 414669.96 E = 733585.57</p> <p>LOT 32</p>		<p>100'</p> <p>SW CORNER SEC. 7 LAT. = 32.1384826°N LONG. = 103.7122244°W NMSP EAST (FT) N = 414669.96 E = 733585.57</p> <p>LOT 33</p>	
<p>100'</p> <p>SW CORNER SEC. 7 LAT. = 32.1384826°N LONG. = 103.7122244°W NMSP EAST (FT) N = 414669.96 E = 733585.57</p> <p>LOT 34</p>		<p>100'</p> <p>SW CORNER SEC. 7 LAT. = 32.1384826°N LONG. = 103.7122244°W NMSP EAST (FT) N = 414669.96 E = 733585.57</p> <p>LOT 35</p>		<p>100'</p> <p>SW CORNER SEC. 7 LAT. = 32.1384826°N LONG. = 103.7122244°W NMSP EAST (FT) N = 414669.96 E = 733585.57</p> <p>LOT 36</p>	
<p>100'</p> <p>SW CORNER SEC. 7 LAT. = 32.1384826°N LONG. = 103.7122244°W NMSP EAST (FT) N = 414669.96 E = 733585.57</p> <p>LOT 37</p>		<p>100'</p> <p>SW CORNER SEC. 7 LAT. = 32.1384826°N LONG. = 103.7122244°W NMSP EAST (FT) N = 414669.96 E = 733585.57</p> <p>LOT 38</p>		<p>100'</p> <p>SW CORNER SEC. 7 LAT. = 32.1384826°N LONG. = 103.7122244°W NMSP EAST (FT) N = 414669.96 E = 733585.57</p> <p>LOT 39</p>	
<p>100'</p> <p>SW CORNER SEC. 7 LAT. = 32.1384826°N LONG. = 103.7122244°W NMSP EAST (FT) N = 414669.96 E = 733585.57</p> <p>LOT 40</p>		<p>100'</p> <p>SW CORNER SEC. 7 LAT. = 32.1384826°N LONG. = 103.7122244°W NMSP EAST (FT) N = 414669.96 E = 733585.57</p> <p>LOT 41</p>		<p>100'</p> <p>SW CORNER SEC. 7 LAT. = 32.1384826°N LONG. = 103.7122244°W NMSP EAST (FT) N = 414669.96 E = 733585.57</p> <p>LOT 42</p>	
<p>100'</p> <p>SW CORNER SEC. 7 LAT. = 32.1384826°N LONG. = 103.7122244°W NMSP EAST (FT) N = 414669.96 E = 733585.57</p> <p>LOT 43</p>		<p>100'</p> <p>SW CORNER SEC. 7 LAT. = 32.1384826°N LONG. = 103.7122244°W NMSP EAST (FT) N = 414669.96 E = 733585.57</p> <p>LOT 44</p>		<p>100'</p> <p>SW CORNER SEC. 7 LAT. = 32.1384826°N LONG. = 103.7122244°W NMSP EAST (FT) N = 414669.96 E = 733585.57</p> <p>LOT 45</p>	
<p>100'</p> <p>SW CORNER SEC. 7 LAT. = 32.1384826°N LONG. = 103.7122244°W NMSP EAST (FT) N = 414669.96 E = 733585.57</p> <p>LOT 46</p>		<p>100'</p> <p>SW CORNER SEC. 7 LAT. = 32.1384826°N LONG. = 103.7122244°W NMSP EAST (FT) N = 414669.96 E = 733585.57</p> <p>LOT 47</p>		<p>100'</p> <p>SW CORNER SEC. 7 LAT. = 32.1384826°N LONG. = 103.7122244°W NMSP EAST (FT) N = 414669.96 E = 733585.57</p> <p>LOT 48</p>	
<p>100'</p> <p>SW CORNER SEC. 7 LAT. = 32.1384826°N LONG. = 103.7122244°W NMSP EAST (FT) N = 414669.96 E = 733585.57</p> <p>LOT 49</p>		<p>100'</p> <p>SW CORNER SEC. 7 LAT. = 32.1384826°N LONG. = 103.7122244°W NMSP EAST (FT) N = 414669.96 E = 733585.57</p> <p>LOT 50</p>		<p>100'</p> <p>SW CORNER SEC. 7 LAT. = 32.1384826°N LONG. = 103.7122244°W NMSP EAST (FT) N = 414669.96 E = 733585.57</p> <p>LOT 51</p>	
<p>100'</p> <p>SW CORNER SEC. 7 LAT. = 32.1384826°N LONG. = 103.7122244°W NMSP EAST (FT) N = 414669.96 E = 733585.57</p> <p>LOT 52</p>		<p>100'</p> <p>SW CORNER SEC. 7 LAT. = 32.1384826°N LONG. = 103.7122244°W NMSP EAST (FT) N = 414669.96 E = 733585.57</p> <p>LOT 53</p>		<p>100'</p> <p>SW CORNER SEC. 7 LAT. = 32.1384826°N LONG. = 103.7122244°W NMSP EAST (FT) N = 414669.96 E = 733585.57</p> <p>LOT 54</p>	
<p>100'</p> <p>SW CORNER SEC. 7 LAT. = 32.1384826°N LONG. = 103.7122244°W NMSP EAST (FT) N = 414669.96 E = 733585.57</p> <p>LOT 55</p>		<p>100'</p> <p>SW CORNER SEC. 7 LAT. = 32.1384826°N LONG. = 103.7122244°W NMSP EAST (FT) N = 414669.96 E = 733585.57</p> <p>LOT 56</p>		<p>100'</p> <p>SW CORNER SEC. 7 LAT. = 32.1384826°N LONG. = 103.7122244°W NMSP EAST (FT) N = 414669.96 E = 733585.57</p> <p>LOT 57</p>	
<p>100'</p> <p>SW CORNER SEC. 7 LAT. = 32.1384826°N LONG. = 103.7122244°W NMSP EAST (FT) N = 414669.96 E = 733585.57</p> <p>LOT 58</p>		<p>100'</p> <p>SW CORNER SEC. 7 LAT. = 32.1384826°N LONG. = 103.7122244°W NMSP EAST (FT) N = 414669.96 E = 733585.57</p> <p>LOT 59</p>		<p>100'</p> <p>SW CORNER SEC. 7 LAT. = 32.1384826°N LONG. = 103.7122244°W NMSP EAST (FT) N = 414669.96 E = 733585.57</p> <p>LOT 60</p>	
<p>100'</p> <p>SW CORNER SEC. 7 LAT. = 32.1384826°N LONG. = 103.7122244°W NMSP EAST (FT) N = 414669.96 E = 733585.57</p> <p>LOT 61</p>		<p>100'</p> <p>SW CORNER SEC. 7 LAT. = 32.1384826°N LONG. = 103.7122244°W NMSP EAST (FT) N = 414669.96 E = 733585.57</p> <p>LOT 62</p>		<p>100'</p> <p>SW CORNER SEC. 7 LAT. = 32.1384826°N LONG. = 103.7122244°W NMSP EAST (FT) N = 414669.96 E = 733585.57</p> <p>LOT 63</p>	
<p>100'</p> <p>SW CORNER SEC. 7 LAT. = 32.1384826°N LONG. = 103.7122244°W NMSP EAST (FT) N = 414669.96 E = 733585.57</p> <p>LOT 64</p>		<p>100'</p> <p>SW CORNER SEC. 7 LAT. = 32.1384826°N LONG. = 103.7122244°W NMSP EAST (FT) N = 414669.96 E = 733585.57</p> <p>LOT 65</p>		<p>100'</p> <p>SW CORNER SEC. 7 LAT. = 32.1384826°N LONG. = 103.7122244°W NMSP EAST (FT) N = 414669.96 E = 733585.57</p> <p>LOT 66</p>	
<p>100'</p> <p>SW CORNER SEC. 7 LAT. = 32.1384826°N LONG. = 103.7122244°W NMSP EAST (FT) N = 414669.96 E = 733585.57</p> <p>LOT 67</p>		<p>100'</p> <p>SW CORNER SEC. 7 LAT. = 32.1384826°N LONG. = 103.7122244°W NMSP EAST (FT) N = 414669.96 E = 733585.57</p> <p>LOT 68</p>		<p>100'</p> <p>SW CORNER SEC. 7 LAT. = 32.1384826°N LONG. = 103.7122244°W NMSP EAST (FT) N = 414669.96 E = 733585.57</p> <p>LOT 69</p>	
<p>100'</p> <p>SW CORNER SEC. 7 LAT. = 32.1384826°N LONG. = 103.7122244°W NMSP EAST (FT) N = 414669.96 E = 733585.57</p> <p>LOT 70</p>		<p>100'</p> <p>SW CORNER SEC. 7 LAT. = 32.1384826°N LONG. = 103.7122244°W NMSP EAST (FT) N = 414669.96 E = 733585.57</p> <p>LOT 71</p>		<p>100'</p> <p>SW CORNER SEC. 7 LAT. = 32.1384826°N LONG. = 103.7122244°W NMSP EAST (FT) N = 414669.96 E = 733585.57</p> <p>LOT 72</p>	
<p>100'</p> <p>SW CORNER SEC. 7 LAT. = 32.1384826°N LONG. = 103.7122244°W NMSP EAST (FT) N = 414669.96 E = 733585.57</p> <p>LOT 73</p>		<p>100'</p> <p>SW CORNER SEC. 7 LAT. = 32.1384826°N LONG. = 103.7122244°W NMSP EAST (FT) N = 414669.96 E = 733585.57</p> <p>LOT 74</p>		<p>100'</p> <p>SW CORNER SEC. 7 LAT. = 32.1384826°N LONG. = 103.7122244°W NMSP EAST (FT) N = 414669.96 E = 733585.57</p> <p>LOT 75</p>	
<p>100'</p> <p>SW CORNER SEC. 7 LAT. = 32.1384826°N LONG. = 103.7122244°W NMSP EAST (FT) N = 414669.96 E = 733585.57</p> <p>LOT 76</p>		<p>100'</p> <p>SW CORNER SEC. 7 LAT. = 32.1384826°N LONG. = 103.7122244°W NMSP EAST (FT) N = 414669.96 E = 733585.57</p> <p>LOT 77</p>		<p>100'</p> <p>SW CORNER SEC. 7 LAT. = 32.1384826°N LONG. = 103.7122244°W NMSP EAST (FT) N = 414669.96 E = 733585.57</p> <p>LOT 78</p>	
<p>100'</p> <p>SW CORNER SEC. 7 LAT. = 32.1384826°N LONG. = 103.7122244°W NMSP EAST (FT) N = 414669.96 E = 733585.57</p> <p>LOT 79</p>		<p>100'</p> <p>SW CORNER SEC. 7 LAT. = 32.1384826°N LONG. = 103.7122244°W NMSP EAST (FT) N = 414669.96 E = 733585.57</p> <p>LOT 80</p>		<p>100'</p> <p>SW CORNER SEC. 7 LAT. = 32.1384826°N LONG. = 103.7122244°W NMSP EAST (FT) N = 414669.96 E = 733585.57</p> <p>LOT 81</p>	
<p>100'</p> <p>SW CORNER SEC. 7 LAT. = 32.1384826°N LONG. = 103.7122244°W NMSP EAST (FT) N = 414669.96 E = 733585.57</p> <p>LOT 82</p>		<p>100'</p> <p>SW CORNER SEC. 7 LAT. = 32.1384826°N LONG. = 103.7122244°W NMSP EAST (FT) N = 414669.96 E = 733585.57</p> <p>LOT 83</p>		<p>100'</p> <p>SW CORNER SEC. 7 LAT. = 32.1384826°N LONG. = 103.7122244°W NMSP EAST (FT) N = 414669.96 E = 733585.57</p> <p>LOT 84</p>	
<p>100'</p> <p>SW CORNER SEC. 7 LAT. = 32.1384826°N LONG. = 103.7122244°W NMSP EAST (FT) N = 414669.96 E = 733585.57</p> <p>LOT 85</p>		<p>100'</p> <p>SW CORNER SEC. 7 LAT. = 32.1384826°N LONG. = 103.7122244°W NMSP EAST (FT) N = 414669.96 E = 733585.57</p> <p>LOT 86</p>		<p>100'</p> <p>SW CORNER SEC. 7 LAT. = 32.1384826°N LONG. = 103.7122244°W NMSP EAST (FT) N = 414669.96 E = 733585.57</p> <p>LOT 87</p>	
<p>100'</p> <p>SW CORNER SEC. 7 LAT. = 32.1384826°N LONG. = 103.7122244°W NMSP EAST (FT) N = 414669.96 E = 733585.57</p> <p>LOT 88</p>		<p>100'</p> <p>SW CORNER SEC. 7 LAT. = 32.1384826°N LONG. = 103.7122244°W NMSP EAST (FT) N = 414669.96 E = 733585.57</p> <p>LOT 89</p>		<p>100'</p> <p>SW CORNER SEC. 7 LAT. = 32.1384826°N LONG. = 103.7122244°W NMSP EAST (FT) N = 414669.96 E = 733585.57</p> <p>LOT 90</p>	
<p>100'</p> <p>SW CORNER SEC. 7 LAT. = 32.1384826°N LONG. = 103.7122244°W NMSP EAST (FT) N = 414669.96 E = 733585.57</p> <p>LOT 91</p>					

SECTION 7, TOWNSHIP 25 SOUTH, RANGE 32 EAST, N.M.P.M.
LEA COUNTY, STATE OF NEW MEXICO
SITE MAP



010 50 100 200

SCALE 1" = 100'

DIRECTIONS TO LOCATION

FROM THE INTERSECTION OF ORLA ROAD, CR 1 AND MONSANTO ROAD GO WEST ON MONSANTO ROAD APPROX. 2.1 MILES, TURN RIGHT AT ROAD INTERSECTION GO NORTH APPROX. 0.9 MILES ROAD TURNS LEFT GO WEST APPROX. 2.0 MILES TURN RIGHT AT ROAD INTERSECTION GO NORTH APPROX. 1.3 MILES TO CALICHE LEASE ROAD ON RIGHT GO EAST 1.82 MILES JUST EAST OF TRIONYX 6 FED 5H & 6H EXISTING PAD ON RIGHT (SOUTH) FOLLOW FLAGS 285 FEET TO NORTHWEST CORNER OF PROPOSED PAD.

DEVON ENERGY PRODUCTION COMPANY, L.P.
COTTON DRAW UNIT 252H

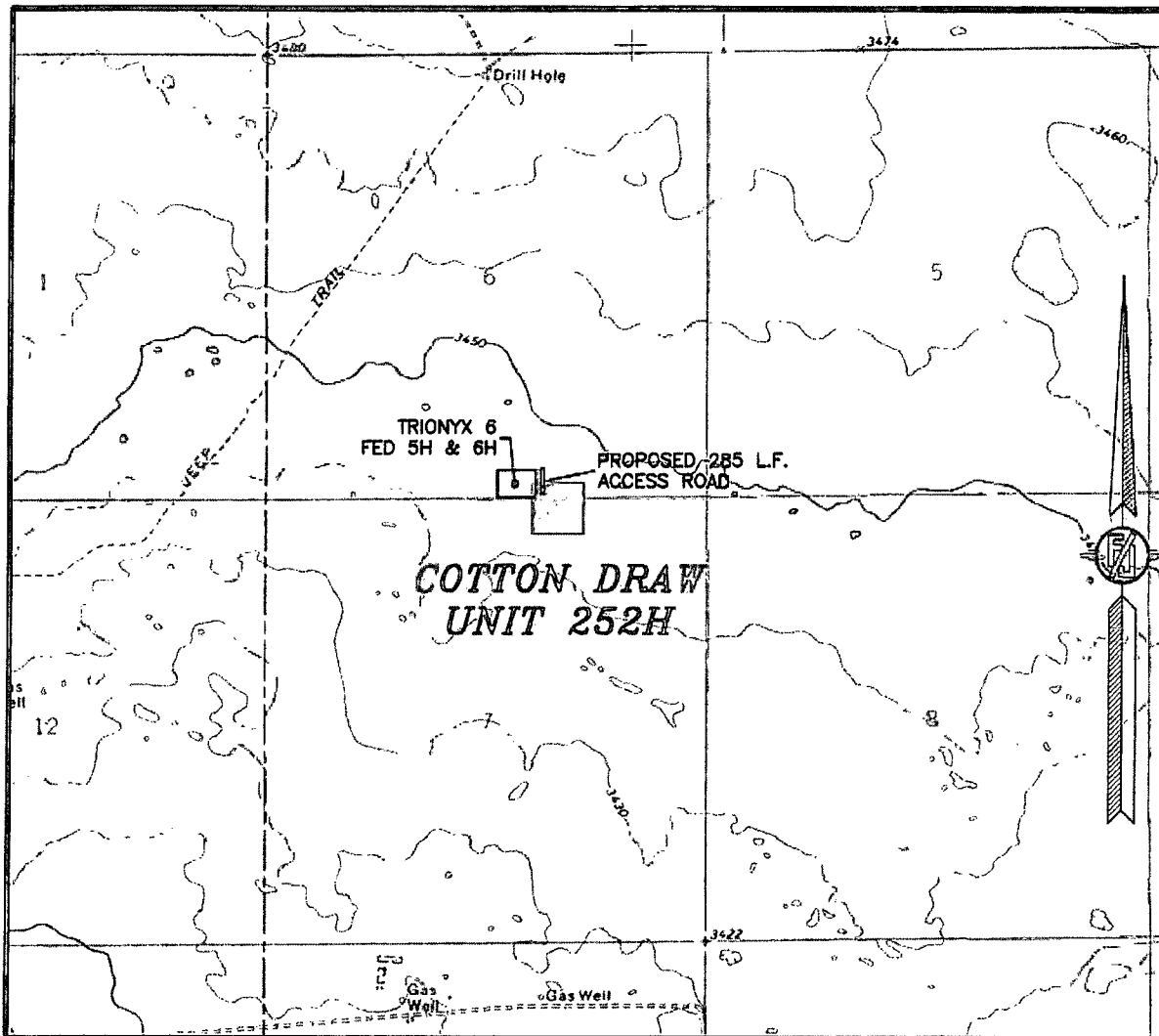
LOCATED 100 FT. FROM THE NORTH LINE
AND 1780 FT. FROM THE EAST LINE OF
SECTION 7, TOWNSHIP 25 SOUTH,
RANGE 32 EAST, N.M.P.M.
LEA COUNTY, STATE OF NEW MEXICO

JUNE 2, 2014

SURVEY NO. 2970

MADRON SURVEYING, INC. 301 SOUTH CANAL CARLSBAD, NEW MEXICO
(575) 234-3341

SECTION 7, TOWNSHIP 25 SOUTH, RANGE 32 EAST, N.M.P.M.
LEA COUNTY, STATE OF NEW MEXICO
LOCATION VERIFICATION MAP



USGS QUAD MAP:
PADUCA BREAKS NW

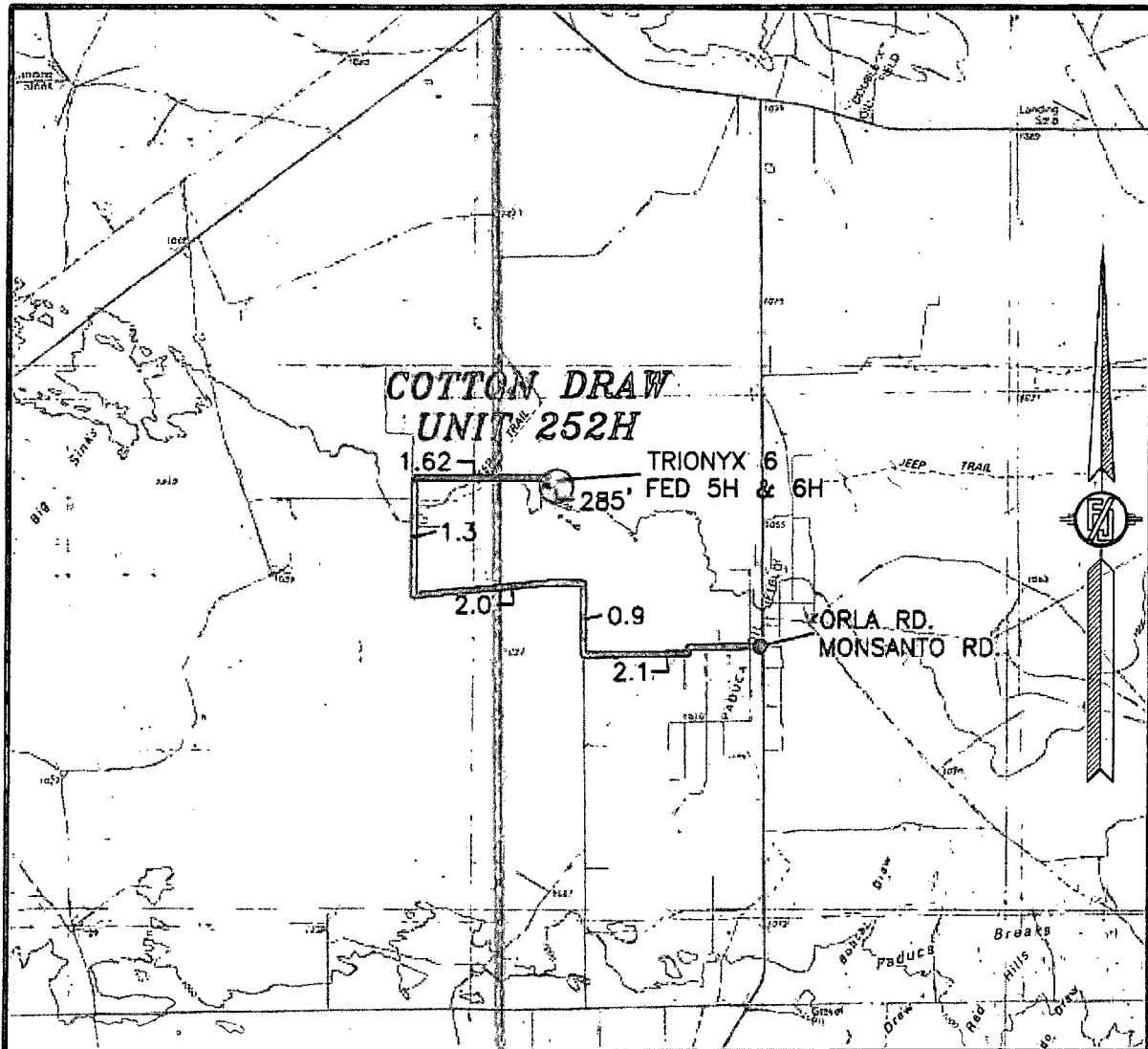
NOT TO SCALE

DEVON ENERGY PRODUCTION COMPANY, L.P.
COTTON DRAW UNIT 252H
LOCATED 100 FT. FROM THE NORTH LINE
AND 1780 FT. FROM THE EAST LINE OF
SECTION 7, TOWNSHIP 25 SOUTH,
RANGE 32 EAST, N.M.P.M.
LEA COUNTY, STATE OF NEW MEXICO

JUNE 2, 2014

MADRON SURVEYING, INC. 301 SOUTH CANAL (575) 234-3341 SURVEY NO. 2970
CARLSBAD, NEW MEXICO

SECTION 7, TOWNSHIP 25 SOUTH, RANGE 32 EAST, N.M.P.M.
LEA COUNTY, STATE OF NEW MEXICO
VICINITY MAP



DISTANCES IN MILES

NOT TO SCALE

DIRECTIONS TO LOCATION

FROM THE INTERSECTION OF ORLA ROAD, CR 1 AND MONSANTO ROAD GO WEST ON MONSANTO ROAD APPROX. 2.1 MILES, TURN RIGHT AT ROAD INTERSECTION GO NORTH APPROX. 0.9 MILES ROAD TURNS LEFT GO WEST APPROX. 2.0 MILES TURN RIGHT AT ROAD INTERSECTION GO NORTH APPROX. 1.3 MILES TO CALICHE LEASE ROAD ON RIGHT GO EAST 1.62 MILES JUST EAST OF TRIONYX 6 FED 5H & 6H EXISTING PAD ON RIGHT (SOUTH) FOLLOW FLAGS 285 FEET TO NORTHWEST CORNER OF PROPOSED PAD.

DEVON ENERGY PRODUCTION COMPANY, L.P.
COTTON DRAW UNIT 252H

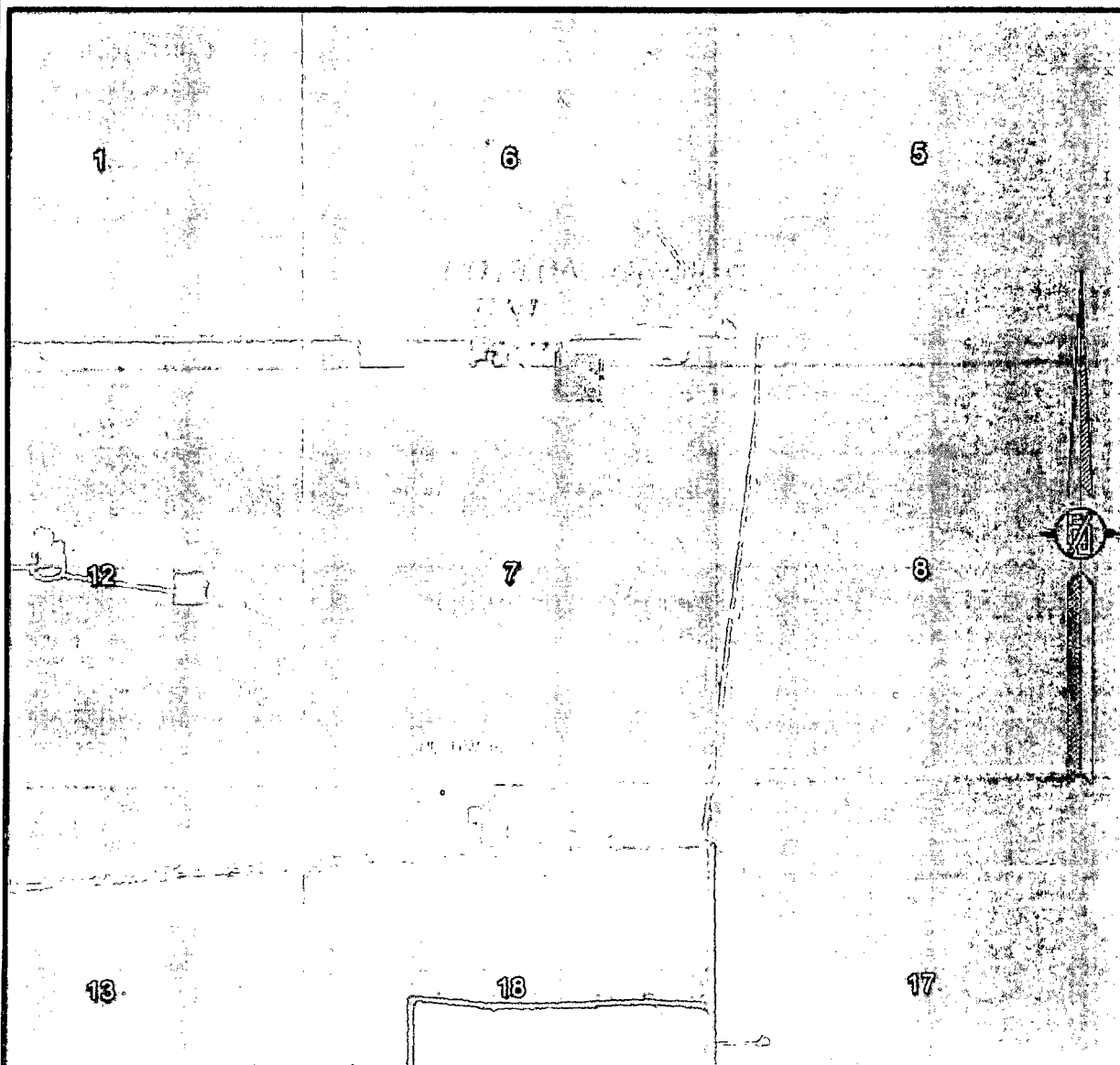
LOCATED 100 FT. FROM THE NORTH LINE
AND 1780 FT. FROM THE EAST LINE OF
SECTION 7, TOWNSHIP 25 SOUTH,
RANGE 32 EAST, N.M.P.M.
LEA COUNTY, STATE OF NEW MEXICO

JUNE 2, 2014

MADRON SURVEYING, INC. 301 SOUTH CANAL
(575) 234-3341

SURVEY NO. 2970
CARLSBAD, NEW MEXICO

SECTION 7, TOWNSHIP 25 SOUTH, RANGE 32 EAST, N.M.P.M.
LEA COUNTY, STATE OF NEW MEXICO
AERIAL PHOTO



NOT TO SCALE
AERIAL PHOTO:
GOOGLE EARTH
FEBRUARY 2014

DEVON ENERGY PRODUCTION COMPANY, L.P.
COTTON DRAW UNIT 252H

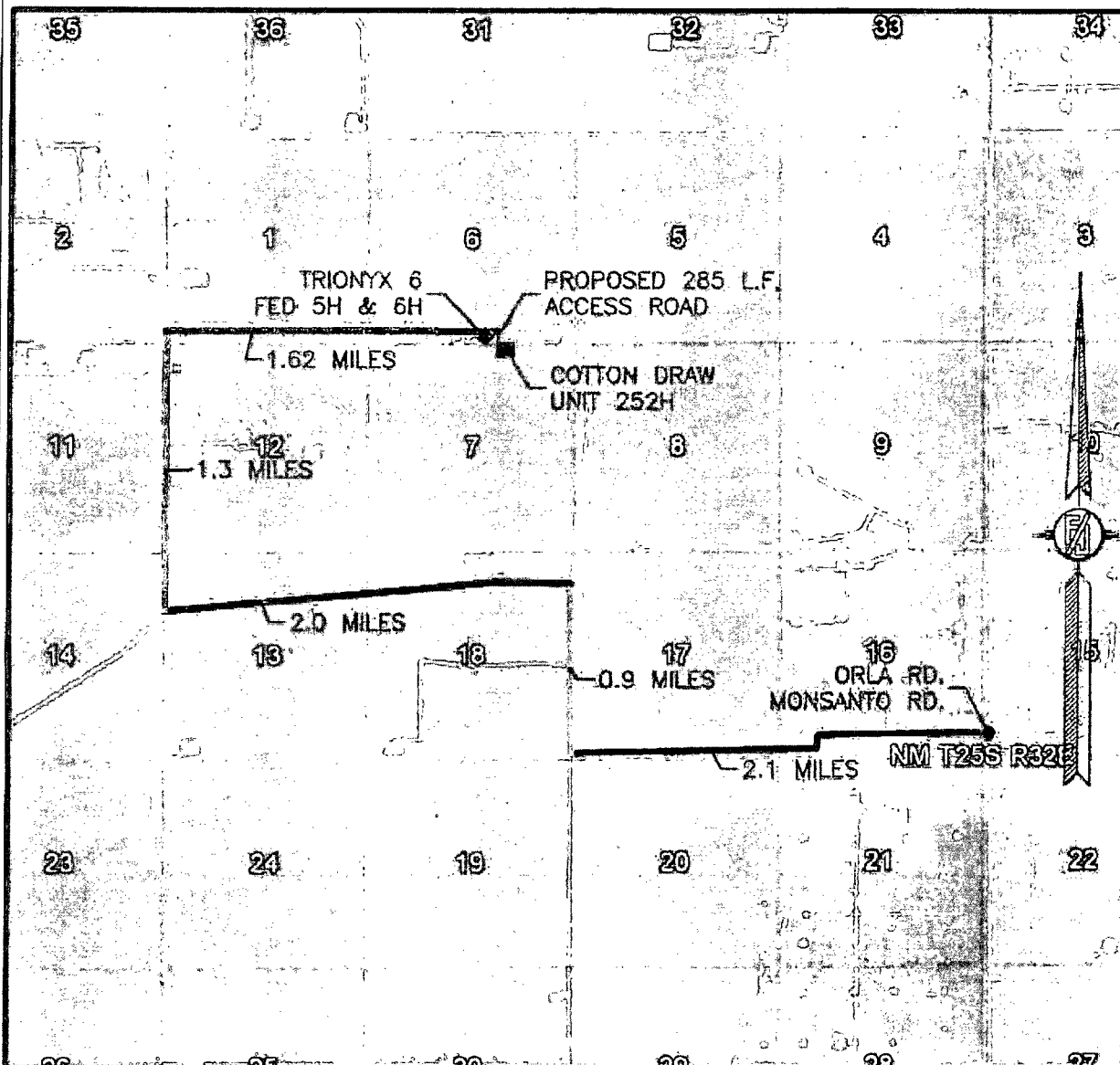
LOCATED 100 FT. FROM THE NORTH LINE
AND 1780 FT. FROM THE EAST LINE OF
SECTION 7, TOWNSHIP 25 SOUTH,
RANGE 32 EAST, N.M.P.M.
LEA COUNTY, STATE OF NEW MEXICO

JUNE 2, 2014

SURVEY NO. 2970

MADRON SURVEYING, INC. 301 SOUTH CANAL (575) 234-3341 CARLSBAD, NEW MEXICO

SECTION 7, TOWNSHIP 25 SOUTH, RANGE 32 EAST, N.M.P.M.
LEA COUNTY, STATE OF NEW MEXICO
AERIAL ACCESS ROUTE MAP



NOT TO SCALE
AERIAL PHOTO:
GOOGLE EARTH
FEBRUARY 2014

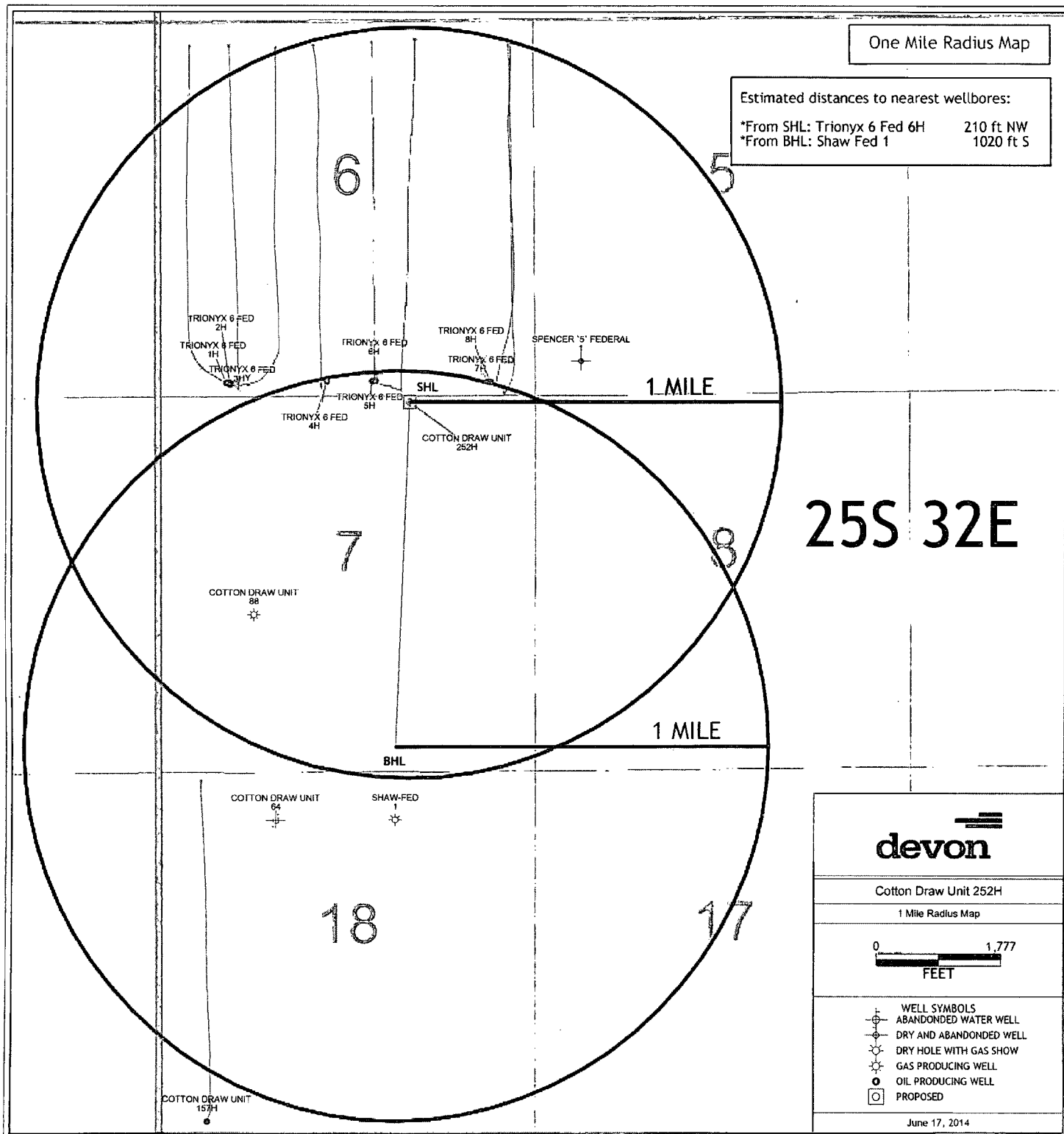
DEVON ENERGY PRODUCTION COMPANY, L.P.
COTTON DRAW UNIT 252H

LOCATED 100 FT. FROM THE NORTH LINE
AND 1780 FT. FROM THE EAST LINE OF
SECTION 7, TOWNSHIP 25 SOUTH,
RANGE 32 EAST, N.M.P.M.
LEA COUNTY, STATE OF NEW MEXICO

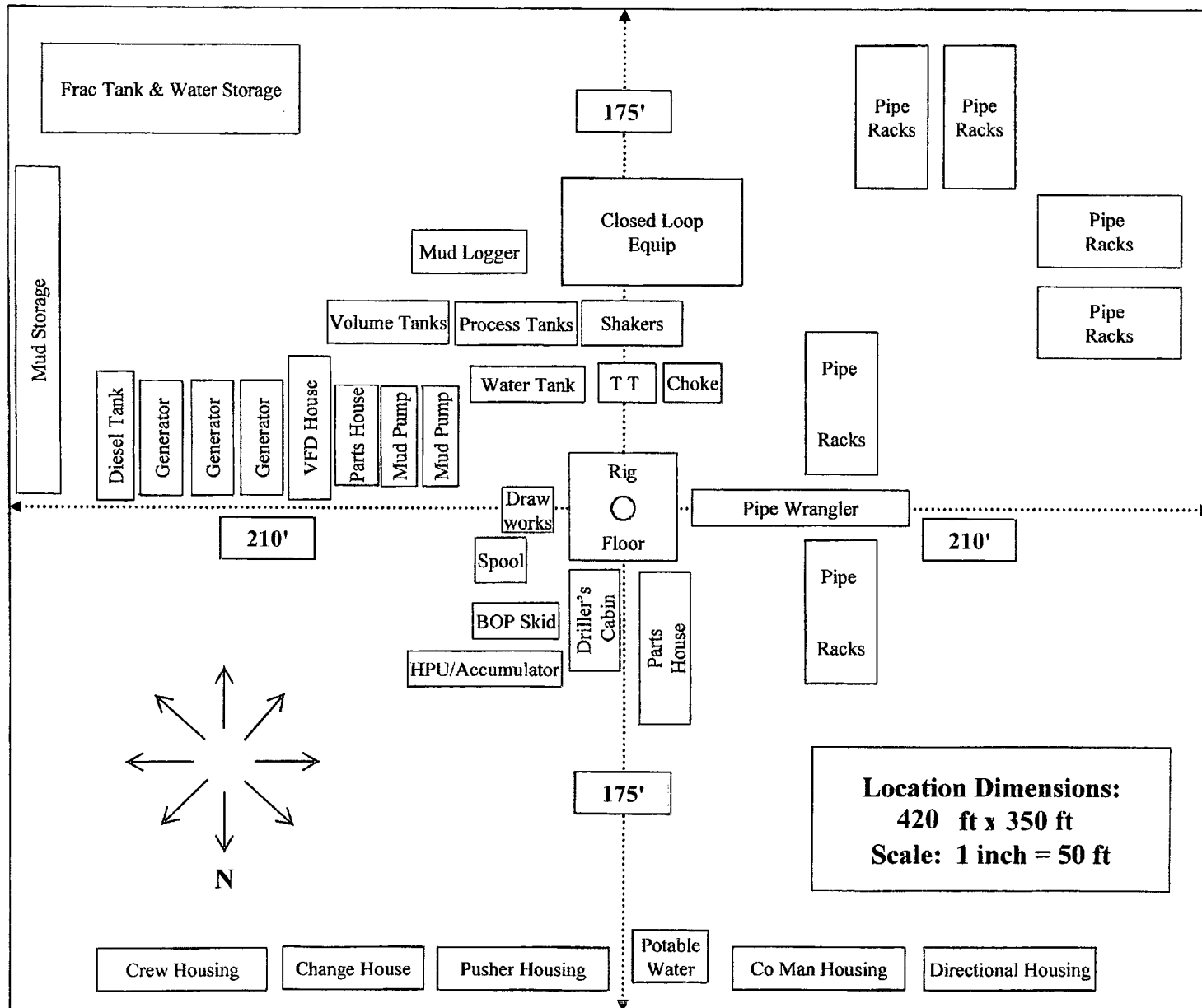
JUNE 2, 2014

SURVEY NO. 2970

MADRON SURVEYING, INC. 301 SOUTH CANAL (575) 234-3341 CARLSBAD, NEW MEXICO



H&P Flex Rig Location Layout



RECEIVED

JUN 03 2015

HOBBS OCD