

HOBBS OGD

JUN 12 2015

District I  
1625 N. French Dr., Hobbs, NM 88240  
Phone: (575) 393-6161 Fax: (575) 393-0720  
District II  
811 S. First St., Artesia, NM 88210  
Phone: (575) 748-1283 Fax: (575) 748-9730  
District III  
1000 Rio Brazos Road, Aztec, NM 87410  
Phone: (505) 334-6178 Fax: (505) 334-6170  
District IV  
1220 S. St. Francis Dr., Santa Fe, NM 87505  
Phone: (505) 476-3460 Fax: (505) 476-3462

State of New Mexico  
Energy, Minerals & Natural Resources Department  
OIL CONSERVATION DIVISION  
1220 South St. Francis Dr.  
Santa Fe, NM 87505

RECEIVED

Form C-102

Revised August 1, 2011

Submit one copy to appropriate

District Office

☐ AMENDED REPORT

## WELL LOCATION AND ACREAGE DEDICATION PLAT

<sup>1</sup> API Number <b>30-025-42630</b>	<sup>2</sup> Pool Code <b>14865-7500</b>	<sup>3</sup> Pool Name <b>BRINNIN STOOD</b> Graz. Bone Spring
<sup>4</sup> Property Code <b>38639</b>	<sup>5</sup> Property Name <b>BLACK MAMBA 15 STATE COM</b>	<sup>6</sup> Well Number <b>8H</b>
<sup>7</sup> OGRID No. <b>6137</b>	<sup>8</sup> Operator Name <b>DEVON ENERGY PRODUCTION COMPANY, L.P.</b>	<sup>9</sup> Elevation <b>3651.3</b>

## " Surface Location

UL or lot no.	Section	Township	Range	Lot Idn	Feet from the	North/South line	Feet from the	East/West line	County
<b>P</b>	<b>10</b>	<b>23 S</b>	<b>33 E</b>		<b>460</b>	<b>SOUTH</b>	<b>760</b>	<b>EAST</b>	<b>LEA</b>

## " Bottom Hole Location If Different From Surface

UL or lot no.	Section	Township	Range	Lot Idn	Feet from the	North/South line	Feet from the	East/West line	County
<b>P</b>	<b>15</b>	<b>23 S</b>	<b>33 E</b>		<b>330</b>	<b>SOUTH</b>	<b>732</b>	<b>EAST</b>	<b>LEA</b>

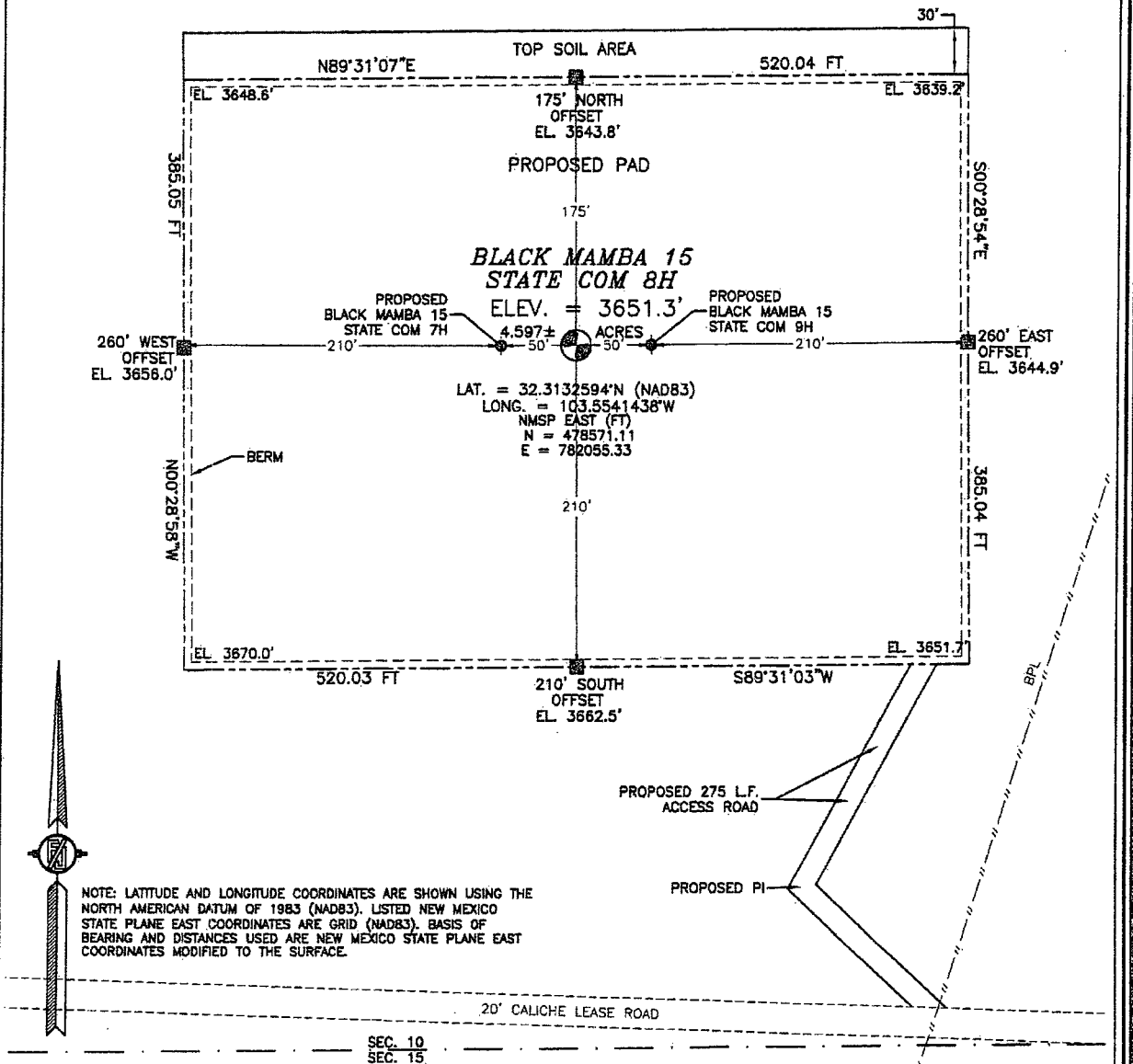
<sup>12</sup> Dedicated Acres <b>160.00</b>	<sup>13</sup> Joint or Infill	<sup>14</sup> Consolidation Code	<sup>15</sup> Order No.
--	-------------------------------	----------------------------------	-------------------------

No allowable will be assigned to this completion until all interests have been consolidated or a non-standard unit has been approved by the division.

<p>NW CORNER SEC. 10 LAT. = 32.3265058N LONG. = 103.5687966W NMSP EAST (FT) N = 483357.54 E = 777494.11</p> <p>W/4 CORNER SEC. 10 SCALED</p> <p>SECTION CORNER LAT. = 32.3119919N LONG. = 103.5687843W NMSP EAST (FT) N = 478077.43 E = 777535.58</p> <p>W/4 CORNER SEC. 15 LAT. = 32.3047319N LONG. = 103.5687767W NMSP EAST (FT) N = 479436.25 E = 777556.76</p> <p>SW CORNER SEC. 15 LAT. = 32.2974757N LONG. = 103.5687592W NMSP EAST (FT) N = 472796.48 E = 777580.98</p>	<p>N/4 CORNER SEC. 10 SCALED</p> <p>SEC. 10</p> <p>BLACK MAMBA 15 STATE COM 8H ELEV. = 3651.3 LAT. = 32.3132594N (NAD83) LONG. = 103.5541438W NMSP EAST (FT) N = 478571.11 E = 782055.33</p> <p>QUARTER CORNER LAT. = 32.3119922N LONG. = 103.5602426W NMSP EAST (FT) N = 478095.37 E = 780174.48</p> <p>NOTE: LATITUDE AND LONGITUDE COORDINATES ARE SHOWN USING THE NORTH AMERICAN DATUM OF 1983 (NAD83). LISTED NEW MEXICO STATE PLANE EAST COORDINATES ARE GRID (NAD83). BASIS OF BEARING AND DISTANCES USED ARE NEW MEXICO STATE PLANE EAST COORDINATES MODIFIED TO THE SURFACE.</p> <p>SEC. 15</p> <p>S/4 CORNER SEC. 15 LAT. = 32.2974646N LONG. = 103.5602208W NMSP EAST (FT) N = 472811.37 E = 780219.33</p>	<p>NE CORNER SEC. 10 LAT. = 32.3265050N LONG. = 103.5516842W NMSP EAST (FT) N = 483395.41 E = 782780.05</p> <p>E/4 CORNER SEC. 10 LAT. = 32.3192397N LONG. = 103.5516795W NMSP EAST (FT) N = 480752.27 E = 782800.78</p> <p>SECTION CORNER LAT. = 32.3119976N LONG. = 103.5516853W NMSP EAST (FT) N = 478117.59 E = 782818.20</p> <p>E/4 CORNER SEC. 15 SCALED</p> <p>SE CORNER SEC. 15 LAT. = 32.2974530N LONG. = 103.5516745W NMSP EAST (FT) N = 472826.30 E = 782860.12</p>	<p><b>17 OPERATOR CERTIFICATION</b> I hereby certify that the information contained herein is true and complete to the best of my knowledge and belief, and that this organization either owns a working interest or unleased mineral interest in the land including the proposed bottom hole location or has a right to drill this well at this location pursuant to a contract with an owner of such a mineral or working interest, or to a voluntary pooling agreement or a compulsory pooling order heretofore entered by the division.</p> <p><i>[Signature]</i> 6/3/2015 Date</p> <p>Printed Name <b>Linda Good</b></p> <p>E-mail Address <b>linda.good@dvn.com</b></p> <p><b>18 SURVEYOR CERTIFICATION</b> I hereby certify that the well location shown on this plat was plotted from field notes of actual surveys made by me or under my supervision, and that the same is true and correct to the best of my belief.</p> <p>MAY 8, 2015 Date of Survey</p> <p><i>[Signature]</i> Signature and Seal of Professional Surveyor</p> <p>Certificate Number: <b>11797</b> SURVEY NO. 3890A</p>
--	---	--	--

JUN 12 2015

**SECTION 10, TOWNSHIP 23 SOUTH, RANGE 33 EAST, N.M.P.M.  
LEA COUNTY, STATE OF NEW MEXICO  
SITE MAP**



NOTE: LATITUDE AND LONGITUDE COORDINATES ARE SHOWN USING THE NORTH AMERICAN DATUM OF 1983 (NAD83). LISTED NEW MEXICO STATE PLANE EAST COORDINATES ARE GRID (NAD83). BASIS OF BEARING AND DISTANCES USED ARE NEW MEXICO STATE PLANE EAST COORDINATES MODIFIED TO THE SURFACE.

010 50 100 200

SCALE 1" = 100'

**DIRECTIONS TO LOCATION**

FROM THE INTERSECTION OF NM S.R. 128 AND DELAWARE BASIN ROAD GO NORTH ON DELAWARE BASIN ROAD 6.0 MILES TURN LEFT AT A CALICHE LEASE ROAD GO WEST 2.4 MILES TO CALICHE LEASE ROAD ON RIGHT GO NORTH 0.98 MILE TO CALICHE LEASE ROAD ON LEFT GO WEST ABOUT 520 FT FOLLOW FLAGS ON RIGHT GO NORTH ABOUT 275 FT TO SOUTHEAST CORNER OF PROPOSED PAD.

SEC. 10  
SEC. 15

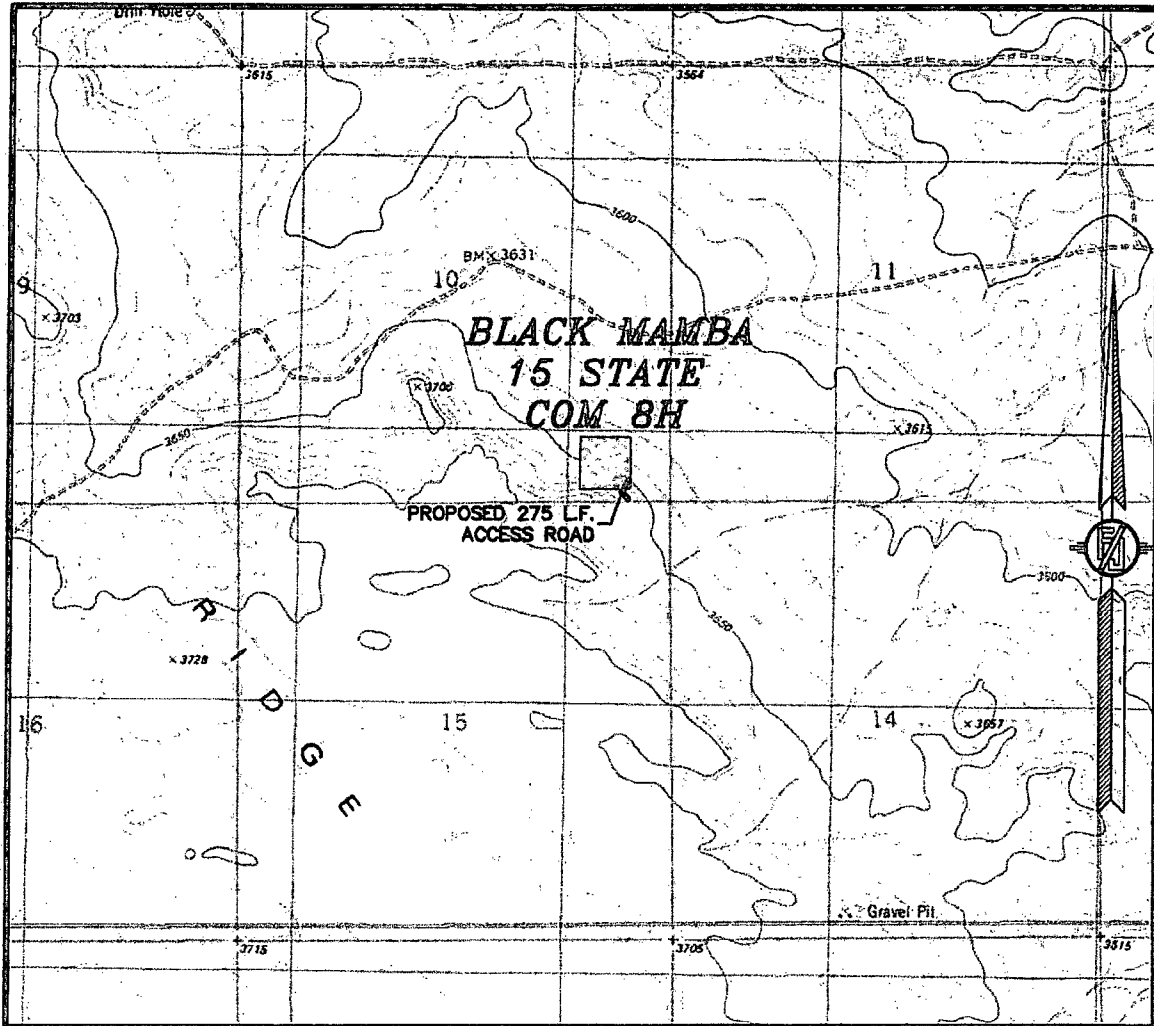
**DEVON ENERGY PRODUCTION COMPANY, L.P.**  
**BLACK MAMBA 15 STATE COM 8H**  
**LOCATED 460 FT. FROM THE SOUTH LINE**  
**AND 760 FT. FROM THE EAST LINE OF**  
**SECTION 10, TOWNSHIP 23 SOUTH,**  
**RANGE 33 EAST, N.M.P.M.**  
**LEA COUNTY, STATE OF NEW MEXICO**

MAY 8, 2015

SURVEY NO. 3890A

**MADRON SURVEYING, INC.** 301 SOUTH CANAL (575) 234-3341 **CARLSBAD, NEW MEXICO**

SECTION 10, TOWNSHIP 23 SOUTH, RANGE 33 EAST, N.M.P.M.  
LEA COUNTY, STATE OF NEW MEXICO  
LOCATION VERIFICATION MAP



USGS QUAD MAP:  
TIP TIP WELLS

NOT TO SCALE

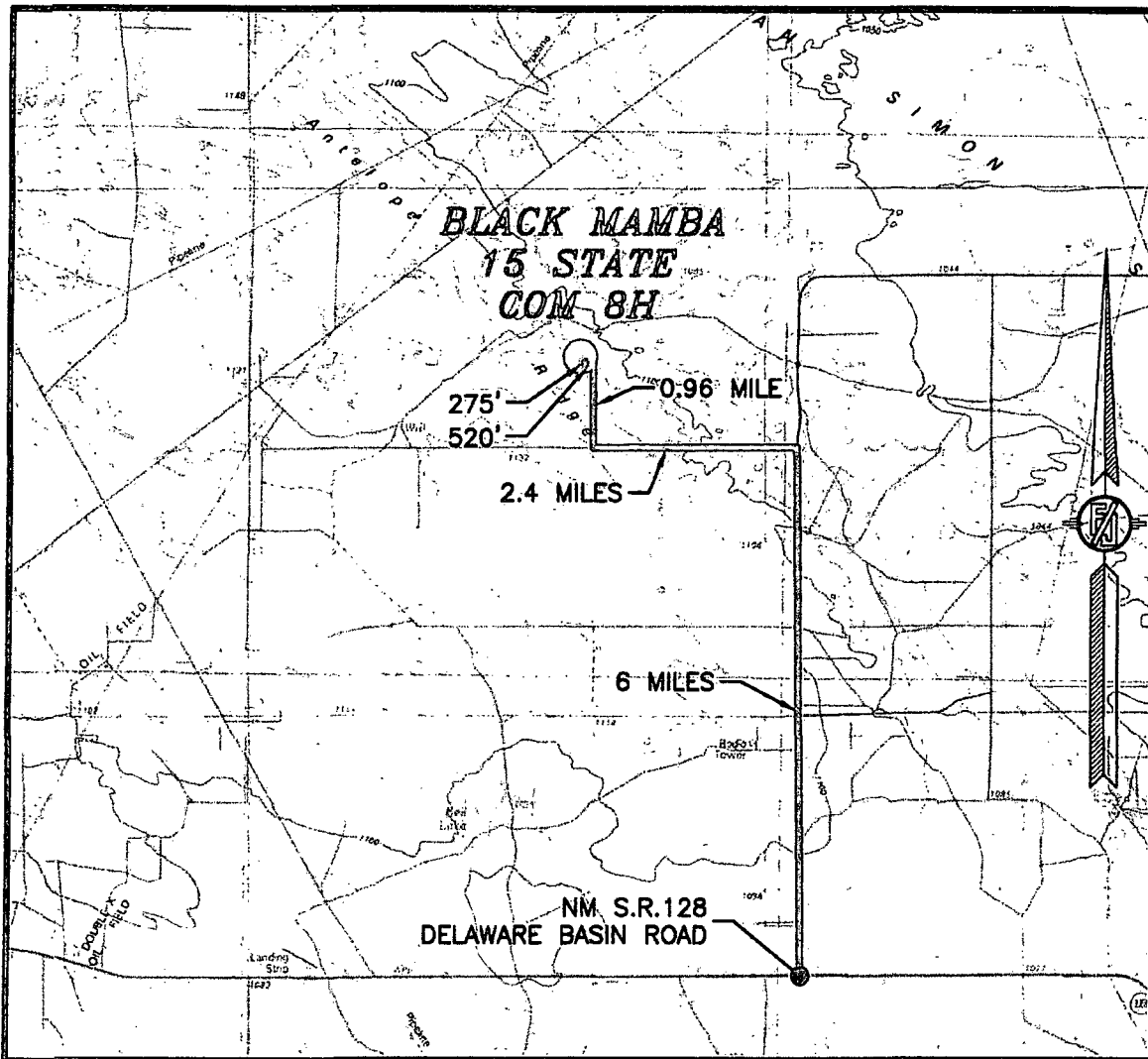
DEVON ENERGY PRODUCTION COMPANY, L.P.  
BLACK MAMBA 15 STATE COM 8H  
LOCATED 460 FT. FROM THE SOUTH LINE  
AND 760 FT. FROM THE EAST LINE OF  
SECTION 10, TOWNSHIP 23 SOUTH,  
RANGE 33 EAST, N.M.P.M.  
LEA COUNTY, STATE OF NEW MEXICO

MAY 8, 2015

SURVEY NO. 3890A

MADRON SURVEYING, INC. 301 SOUTH CANAL (575) 234-3341 CARLSBAD, NEW MEXICO

SECTION 10, TOWNSHIP 23 SOUTH, RANGE 33 EAST, N.M.P.M.  
LEA COUNTY, STATE OF NEW MEXICO  
VICINITY MAP



DISTANCES IN MILES

NOT TO SCALE

**DIRECTIONS TO LOCATION**

FROM THE INTERSECTION OF NM S.R. 128 AND DELAWARE BASIN ROAD GO NORTH ON DELAWARE BASIN ROAD 6.0 MILES TURN LEFT AT A CALICHE LEASE ROAD GO WEST 2.4 MILES TO CALICHE LEASE ROAD ON RIGHT GO NORTH 0.96 MILE TO CALICHE LEASE ROAD ON LEFT GO WEST ABOUT 520 FT FOLLOW FLAGS ON RIGHT GO NORTH ABOUT 275 FT TO SOUTHEAST CORNER OF PROPOSED PAD.

**DEVON ENERGY PRODUCTION COMPANY, L.P.**

**BLACK MAMBA 15 STATE COM 8H**

LOCATED 460 FT. FROM THE SOUTH LINE

AND 760 FT. FROM THE EAST LINE OF

SECTION 10, TOWNSHIP 23 SOUTH,

RANGE 33 EAST, N.M.P.M.

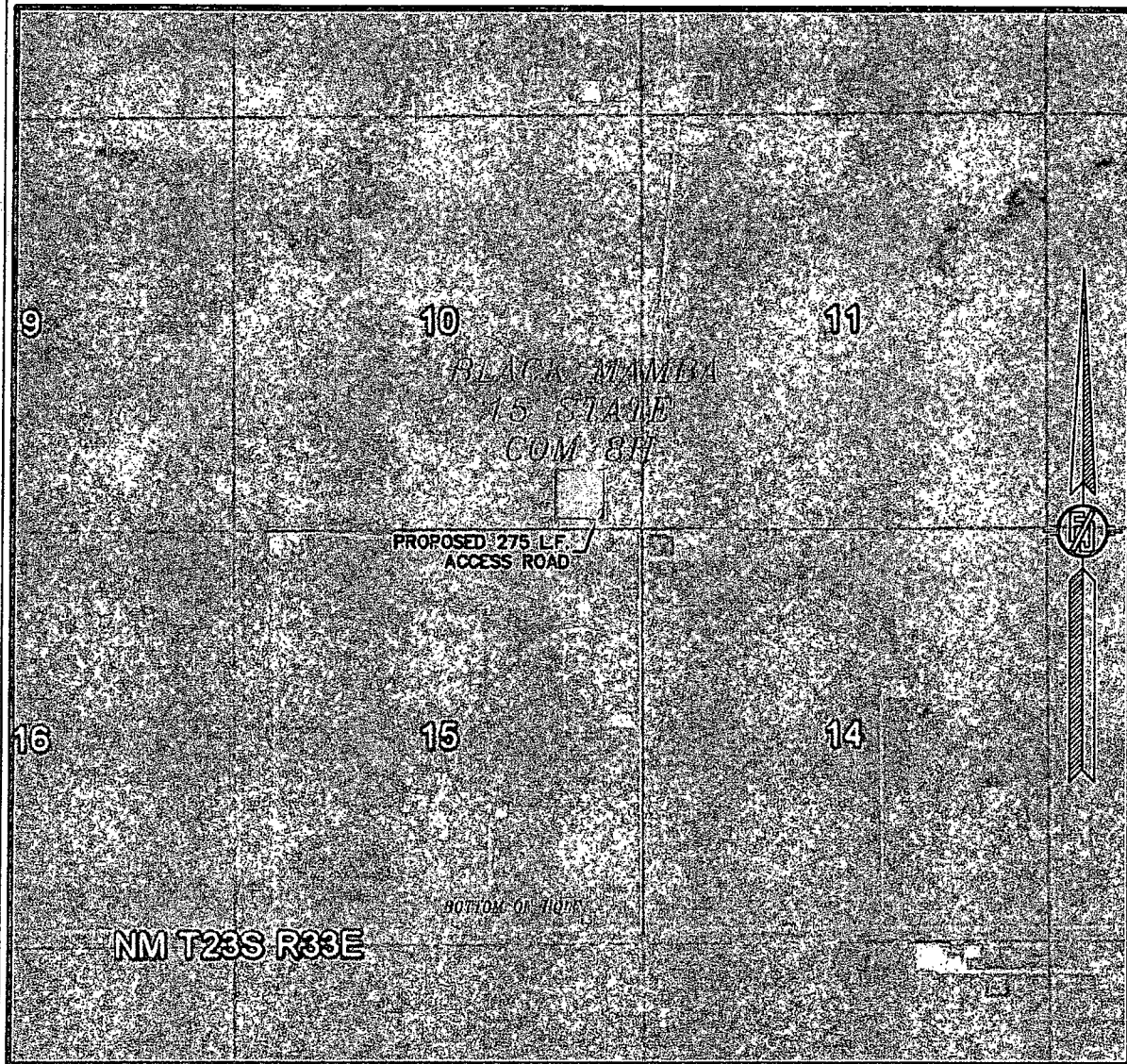
LEA COUNTY, STATE OF NEW MEXICO

MAY 8, 2015

SURVEY NO. 3890A

MADRON SURVEYING, INC. 301 SOUTH CANAL (575) 234-3341 CARLSBAD, NEW MEXICO

SECTION 10, TOWNSHIP 23 SOUTH, RANGE 33 EAST, N.M.P.M.  
LEA COUNTY, STATE OF NEW MEXICO  
**AERIAL PHOTO**



NOT TO SCALE  
AERIAL PHOTO:  
GOOGLE EARTH  
FEB. 2014

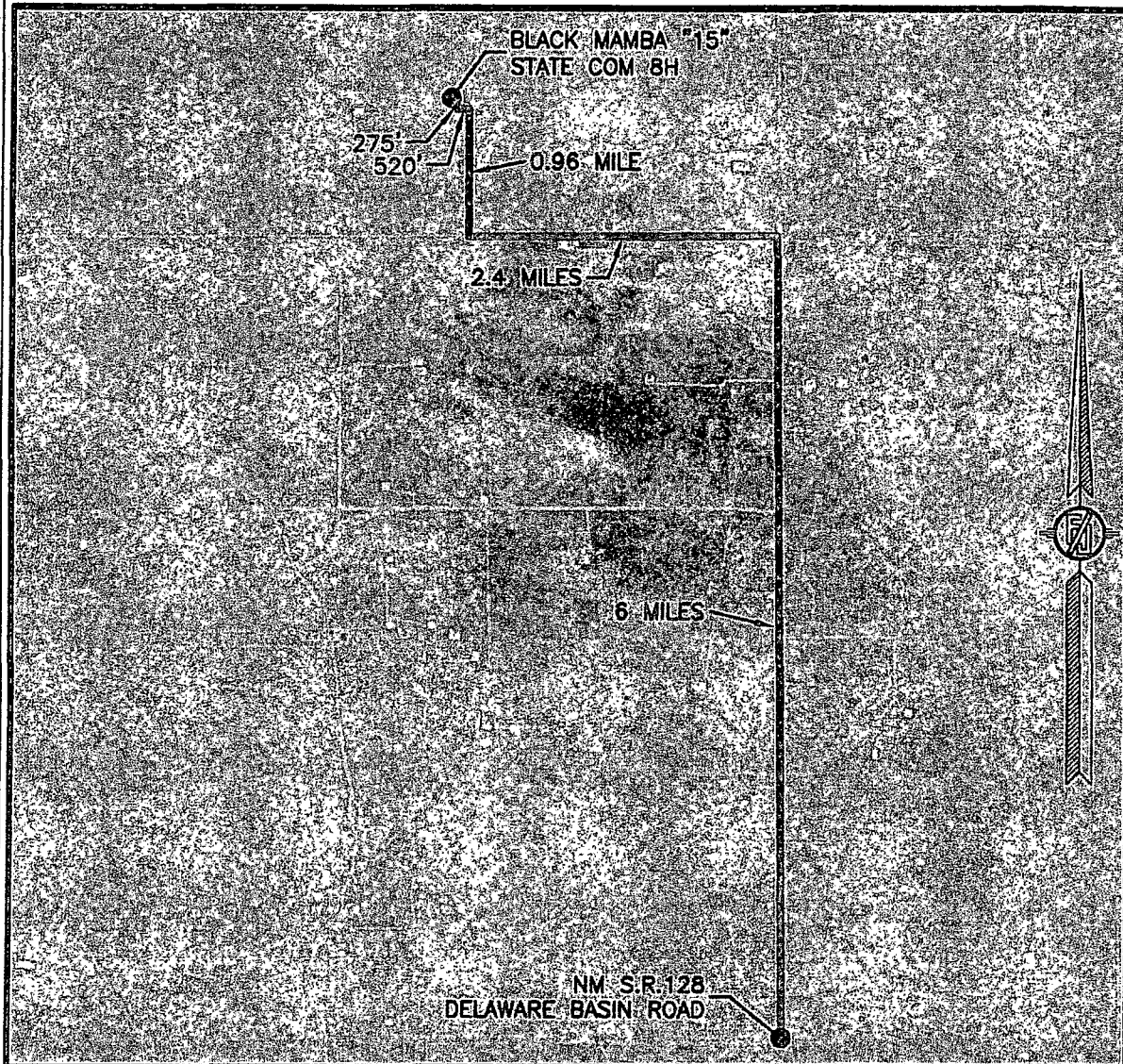
**DEVON ENERGY PRODUCTION COMPANY, L.P.**  
**BLACK MAMBA 15 STATE COM 8H**  
LOCATED 460 FT. FROM THE SOUTH LINE  
AND 760 FT. FROM THE EAST LINE OF  
SECTION 10, TOWNSHIP 23 SOUTH,  
RANGE 33 EAST, N.M.P.M.  
LEA COUNTY, STATE OF NEW MEXICO

MAY 8, 2015

SURVEY NO. 3890A

MADRON SURVEYING, INC. 301 SOUTH CANAL CARLSBAD, NEW MEXICO  
(575) 234-3341

SECTION 10, TOWNSHIP 23 SOUTH, RANGE 33 EAST, N.M.P.M.  
LEA COUNTY, STATE OF NEW MEXICO  
**AERIAL ACCESS ROUTE MAP**



NOT TO SCALE  
AERIAL PHOTO:  
GOOGLE EARTH  
FEB. 2014

—DEVON ENERGY PRODUCTION COMPANY, L.P.  
**BLACK MAMBA 15 STATE COM 8H**  
LOCATED 460 FT. FROM THE SOUTH LINE  
AND 760 FT. FROM THE EAST LINE OF  
SECTION 10, TOWNSHIP 23 SOUTH,  
RANGE 33 EAST, N.M.P.M.  
LEA COUNTY, STATE OF NEW MEXICO

MAY 8, 2015

SURVEY NO. 3890A

MADRON SURVEYING, INC. 301 SOUTH CANAL (575) 234-3341 CARLSBAD, NEW MEXICO