

District I
1625 N. French Dr., Hobbs, NM 88240
Phone: (575) 393-6161 Fax: (575) 393-0720
District II
311 S. First St., Artesia, NM 88210
Phone: (575) 748-1281 Fax: (575) 748-9720
District III
1000 Rio Brazos Road, Aztec, NM 87410
Phone: (505) 334-6178 Fax: (505) 334-6170
District IV
1220 S. St. Francis Dr., Santa Fe, NM 87505
Phone: (505) 476-3460 Fax: (505) 476-3462

State of New Mexico
Energy, Minerals & Natural Resources Department
OIL CONSERVATION DIVISION
1220 South St. Francis Dr.
Santa Fe, NM 87505

HOBBS OCD

JUN 15 2015

RECEIVED

Form C-102
Revised August 1, 2011
Submit one copy to appropriate
District Office

☐ AMENDED REPORT

WELL LOCATION AND ACREAGE DEDICATION PLAT

¹ API Number 30-025-42633	² Pool Code 96715	³ Pool Name WC-025 G-04 5253209L; BS
⁴ Property Code 714977	⁵ Property Name PADUCA BREAKS 9 FEDERAL	
⁶ OGRID No. 6137	⁷ Operator Name DEVON ENERGY PRODUCTION COMPANY, L.P.	⁸ Well Number 1H
		⁹ Elevation 3466.3

¹⁰ Surface Location

UL or lot no.	Section	Township	Range	Lot Idn	Feet from the	North/South line	Feet from the	East/West line	County
B	9	25 S	32 E		200	NORTH	1350	EAST	LEA

¹¹ Bottom Hole Location If Different From Surface

UL or lot no.	Section	Township	Range	Lot Idn	Feet from the	North/South line	Feet from the	East/West line	County
O	9	25 S	32 E		330	SOUTH	1980	EAST	LEA

¹² Dedicated Acres 160	¹³ Joint or Infill	¹⁴ Consolidation Code	¹⁵ Order No.
---	-------------------------------	----------------------------------	-------------------------

No allowable will be assigned to this completion until all interests have been consolidated or a non-standard unit has been approved by the division.
PP: 200' FNL & 1350' FEL, Sec 9, T25S - R32E

<p>S89°10'49"W 2664.58 FT</p> <p>NW CORNER SEC. 9 LAT. = 32.1521517°N LONG. = 103.6886353°W</p> <p>NMSP EAST (FT) N = 419685.52 E = 740857.31</p>		<p>S89°28'41"W 2655.61 FT</p> <p>N/4 CORNER SEC. 9 LAT. = 32.1522123°N LONG. = 103.6800279°W</p> <p>NMSP EAST (FT) N = 419723.63 E = 743521.04</p>		<p>1350'</p> <p>NE CORNER SEC. 9 LAT. = 32.1522342°N LONG. = 103.6714492°W</p> <p>NMSP EAST (FT) N = 419747.81 E = 746175.96</p>	
<p>PADUCA BREAKS 9 FEDERAL #1H ELEV. = 3466.3' LAT. = 32.1516734°N (NAD83) LONG. = 103.6758092°W NMSP EAST (FT) N = 419535.53 E = 744827.84</p>					
<p>W/4 CORNER SEC. 9 LAT. = 32.1448894°N LONG. = 103.6886077°W</p> <p>NMSP EAST (FT) N = 417043.62 E = 740881.67</p>				<p>E/4 CORNER SEC. 9 LAT. = 32.1450064°N LONG. = 103.6714348°W</p> <p>NMSP EAST (FT) N = 417118.44 E = 746196.56</p>	
<p>SW CORNER SEC. 9 LAT. = 32.1376330°N LONG. = 103.6886037°W</p> <p>NMSP EAST (FT) N = 414403.87 E = 740898.71</p>		<p>S/4 CORNER SEC. 9 LAT. = 32.1376830°N LONG. = 103.6800405°W</p> <p>NMSP EAST (FT) N = 414438.01 E = 743549.18</p>		<p>SE CORNER SEC. 9 LAT. = 32.1377224°N LONG. = 103.6714339°W</p> <p>NMSP EAST (FT) N = 414468.64 E = 746213.13</p>	
<p>BOTTOM OF HOLE LAT. = 32.1386001°N LONG. = 103.6778293°W NMSP EAST (FT) N = 414775.81 E = 744231.50</p> <p>BOTTOM OF HOLE 1930'</p>					
<p>N89°15'43"E 2651.26 FT</p> <p>N89°20'29"E 2664.70 FT</p>					

¹⁷ OPERATOR CERTIFICATION
I hereby certify that the information contained herein is true and complete to the best of my knowledge and belief, and that this organization either owns a working interest or unleased mineral interest in the land including the proposed bottom hole location or has a right to drill this well at this location pursuant to a contract with an owner of such a mineral or working interest, or to a voluntary pooling agreement or a compulsory pooling order heretofore entered by the division.

Patti Riechers 06/27/2013
Signature Date

Patti Riechers, Regulatory Specialist
Printed Name

patti.riechers@dvn.com
E-mail Address

¹⁸ SURVEYOR CERTIFICATION
I hereby certify that the well location shown on this plat was plotted from field notes of actual surveys made by me or under my supervision, and that the same is true and correct to the best of my belief.

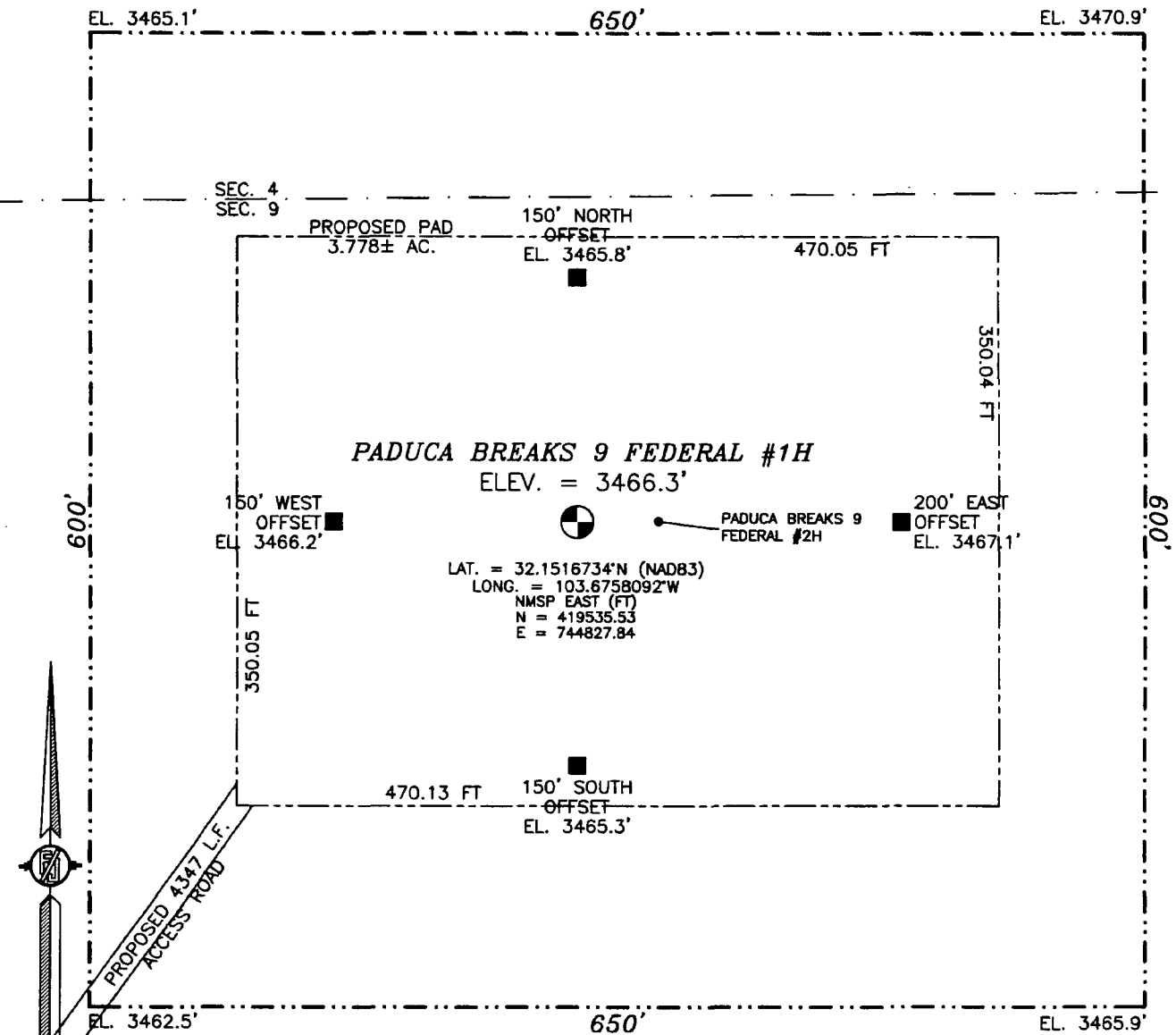
FEBRUARY 28, 2013
Date of Survey

Frank J. Jaramillo
Signature and Seal of Professional Surveyor

Certificate Number: **ELIMON E. JARAMILLO, PLS 12797**
SURVEY NO. 1629

JUN 16 2015

SECTION 9, TOWNSHIP 25 SOUTH, RANGE 32E EAST, N.M.P.M.
LEA COUNTY, STATE OF NEW MEXICO



0 10 50 100 200

SCALE 1" = 100'

DIRECTIONS TO LOCATION

FROM THE INTERSECTION OF SR 128 (JAL HWY) AND CR 1 (ORLA ROAD) GO SOUTH ON CR 1 5.34 MILES TURN RIGHT ON CALICHE LEASE ROAD GO WEST 0.15 MILES TO ROAD INTERSECTION GO WEST 0.25 MILES TO ROAD INTERSECTION GO NORTH (RIGHT) 0.11 MILES TO ROAD ANGLE LEFT THIS IS AN OLD WELL PAD AT NORTH CORNER OF INTERSECTION BEGIN ROAD UPGRADE OVER DIRT PILE GO NORTH 3845 L.F. ALONG ROAD UPGRADE TO THE NORTH END OF AN ABANDONED WELL PAD FOLLOW FLAGS NE. 503 L.F. TO SOUTHWEST CORNER OF PROPOSED PAD

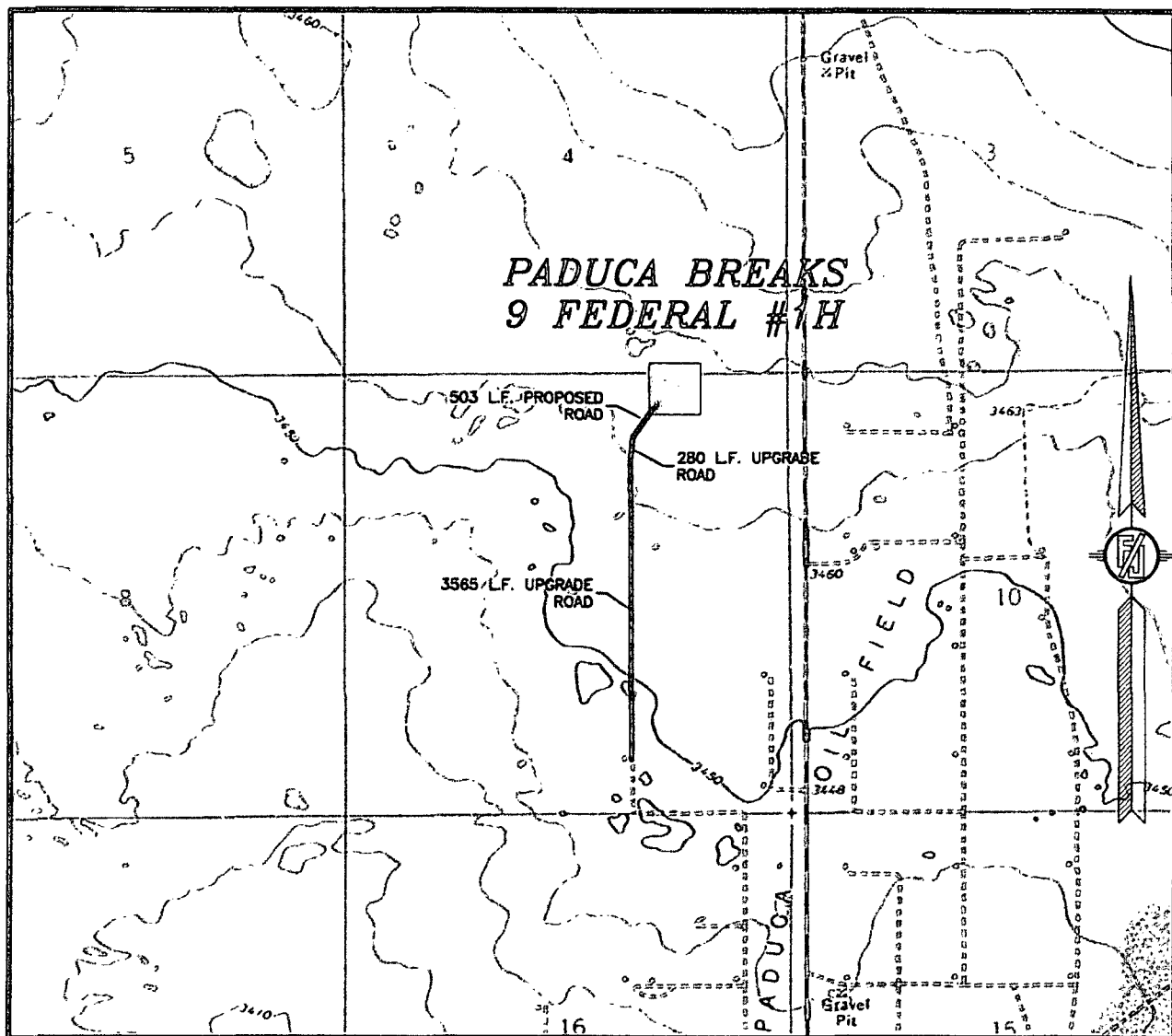
DEVON ENERGY PRODUCTION COMPANY, L.P.
PADUCA BREAKS 9 FEDERAL #1H
LOCATED 200 FT. FROM THE NORTH LINE
AND 1350 FT. FROM THE EAST LINE OF
SECTION 9, TOWNSHIP 25 SOUTH,
RANGE 32E EAST, N.M.P.M.
LEA COUNTY, STATE OF NEW MEXICO

FEBRUARY 28, 2013

SURVEY NO. 1629

MADRON SURVEYING, INC. 301 SOUTH CANAL (575) 234-3341 CARLSBAD, NEW MEXICO

SECTION 9, TOWNSHIP 25 SOUTH, RANGE 32E EAST, N.M.P.M.
LEA COUNTY, STATE OF NEW MEXICO
LOCATION VERIFICATION MAP



USGS QUAD MAP:
PADUCA BREAKS NW

NOT TO SCALE

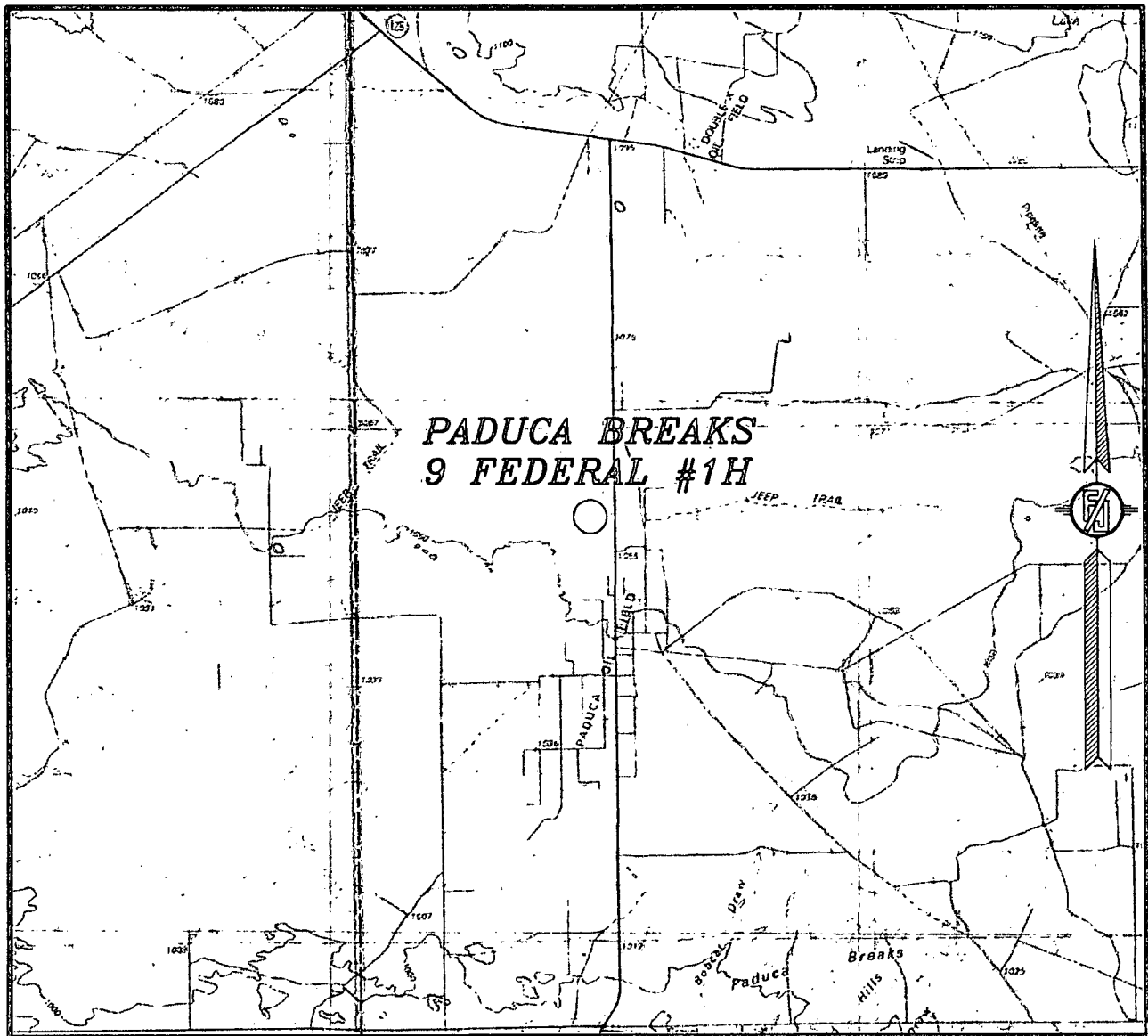
DEVON ENERGY PRODUCTION COMPANY, L.P.
PADUCA BREAKS 9 FEDERAL #1H
LOCATED 200 FT. FROM THE NORTH LINE
AND 1350 FT. FROM THE EAST LINE OF
SECTION 9, TOWNSHIP 25 SOUTH,
RANGE 32E EAST, N.M.P.M.
LEA COUNTY, STATE OF NEW MEXICO

FEBRUARY 28, 2013

SURVEY NO. 1629

MADRON SURVEYING, INC. 301 SOUTH CANAL (575) 234-3341 CARLSBAD, NEW MEXICO

SECTION 9, TOWNSHIP 25 SOUTH, RANGE 32E EAST, N.M.P.M.
LEA COUNTY, STATE OF NEW MEXICO
VICINITY MAP



NOT TO SCALE

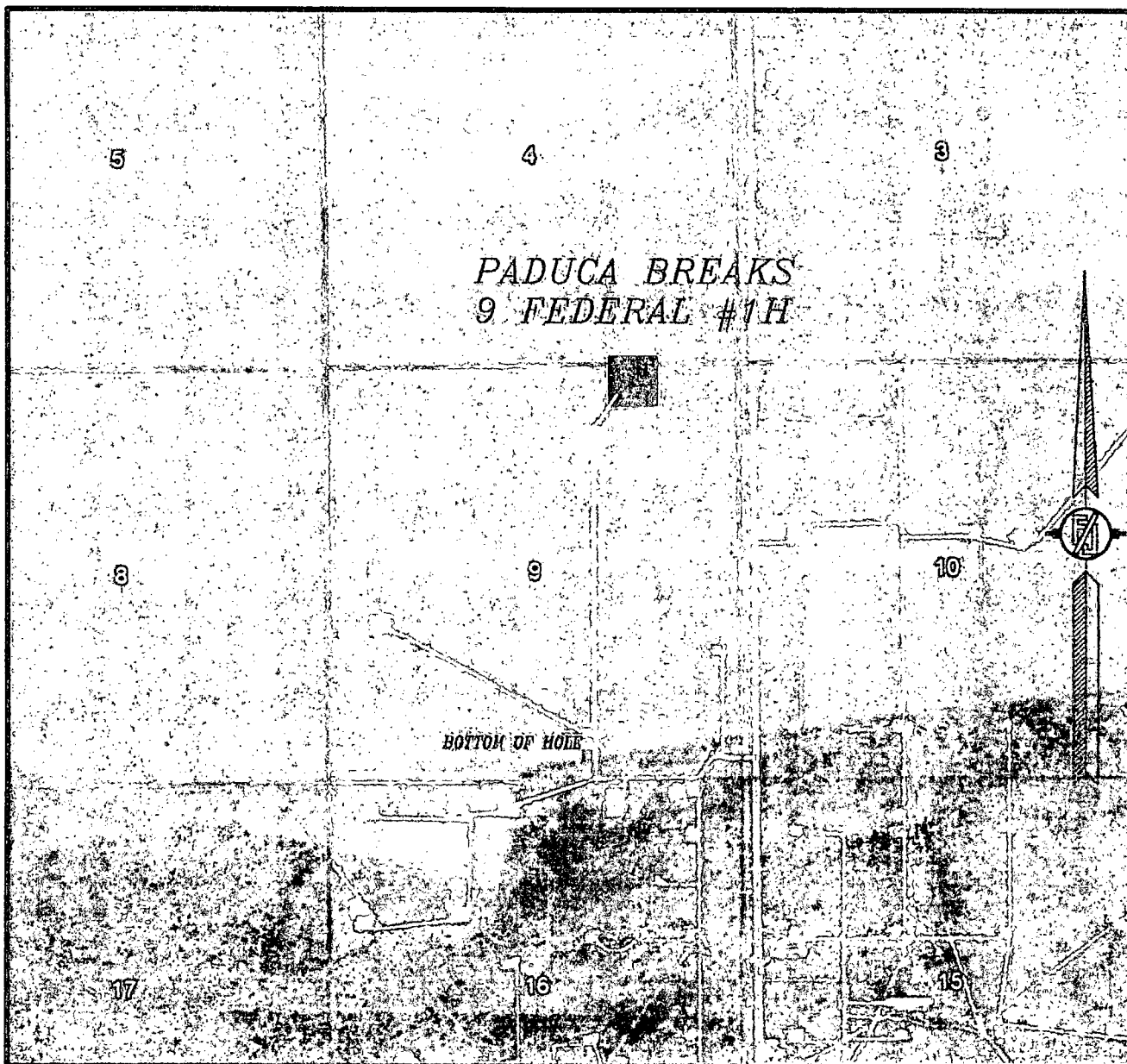
DEVON ENERGY PRODUCTION COMPANY, L.P.
PADUCA BREAKS 9 FEDERAL #1H
LOCATED 200 FT. FROM THE NORTH LINE
AND 1350 FT. FROM THE EAST LINE OF
SECTION 9, TOWNSHIP 25 SOUTH,
RANGE 32E EAST, N.M.P.M.
LEA COUNTY, STATE OF NEW MEXICO

FEBRUARY 28, 2013

SURVEY NO. 1629

MADRON SURVEYING, INC. 301 SOUTH CANAL (575) 234-3341 CARLSBAD, NEW MEXICO

SECTION 9, TOWNSHIP 25 SOUTH, RANGE 32E EAST, N.M.P.M.
LEA COUNTY, STATE OF NEW MEXICO
AERIAL PHOTO



NOT TO SCALE
AERIAL PHOTO:
GOOGLE EARTH
MARCH 2012

DEVON ENERGY PRODUCTION COMPANY, L.P.
PADUCA BREAKS 9 FEDERAL #1H
LOCATED 200 FT. FROM THE NORTH LINE
AND 1350 FT. FROM THE EAST LINE OF
SECTION 9, TOWNSHIP 25 SOUTH,
RANGE 32E EAST, N.M.P.M.
LEA COUNTY, STATE OF NEW MEXICO

FEBRUARY 28, 2013

SURVEY NO. 1629

MADRON SURVEYING, INC. 301 SOUTH CANAL (575) 234-3341 CARLSBAD, NEW MEXICO

**PADUCA BREAKS 9 FEDERAL 1H
T25S - R32E**

SHL to nearest lease line: 200 ft.
SHL to nearest wellbore: 955 ft. SW.
SHL to BHL 4788 ft.
BHL to nearest wellbore: 367 ft. NNW.

RAY 9 FEDERAL 1 472 ft. W.
PADUCA FEDERAL 9 1 3095 ft. W.
COTTON DRAW UNIT 52 1432 ft. E.
COTTON DRAW 9L FED 1 2955 ft. W.
EMILY FLINT RAY-FED 2 88 ft. W.
COTTON DRAW UNIT 34 1610 ft. E.
COTTON DRAW 9L FEDERAL 2H 1070 ft. W.*

*All distances are estimated.

1 MILE

PADUCA BREAKS 9 FEDE 1H

SHL

RAY '9' FEDERAL #1

PADUCA FEDERAL 9 #1

COTTON DRAW '9L' FED 1

EMILY FLINT RAY-FED 2

COTTON DRAW 9L FEDER 2H

BHL

PADUCA DELAWARE 16 S 1-
PADUCA DELAWARE 16 S 3-

PADUCA DELAWARE 16 S 8

PADUCA DELAWARE 16 S 5

PADUCA DELAWARE 16 S 2

PADUCA DELAWARE 16 S 4

EL BRADLEY-STATE 3

MONSANTO-STATE 8

MONSANTO-STATE 6

MONSANTO-STATE 5

MONSANTO STATE #10

MONSANTO-STATE 4

MONSANTO-STATE 3

MONSANTO-STATE 2

CONTINENTAL-STATE 1

COTTON DRAW UNIT 13

COTTON DRAW UNIT 3

COTTON DRAW UNIT 2

COTTON DRAW UNIT 12

COTTON DRAW UNIT 17

COTTON DRAW UNIT 22

GE JORDAN NCT-1.10

JORDAN G E FEDERAL N 2

EF RAY-FEDERAL B 1

COTTON DRAW UNIT 24

EF RAY-FEDERAL B 6

COTTON DRAW UNIT 41

COTTON DRAW UNIT 6

COTTON DRAW UNIT 19

COTTON DRAW UNIT 34

COTTON DRAW UNIT 20

COTTON DRAW UNIT 75

COTTON DRAW UNIT 2

COTTON DRAW UNIT 5

COTTON DRAW UNIT 10

COTTON DRAW UNIT 92

COTTON DRAW UNIT 52

COTTON DRAW UNIT 66

EF RAY-FEDERAL NCT-2 2

COTTON DRAW UNIT 33

COTTON DRAW UNIT 60

COTTON DRAW UNIT 63

EF RAY-FEDERAL B 3

COTTON DRAW UNIT-FE

COTTON DRAW UNIT 73

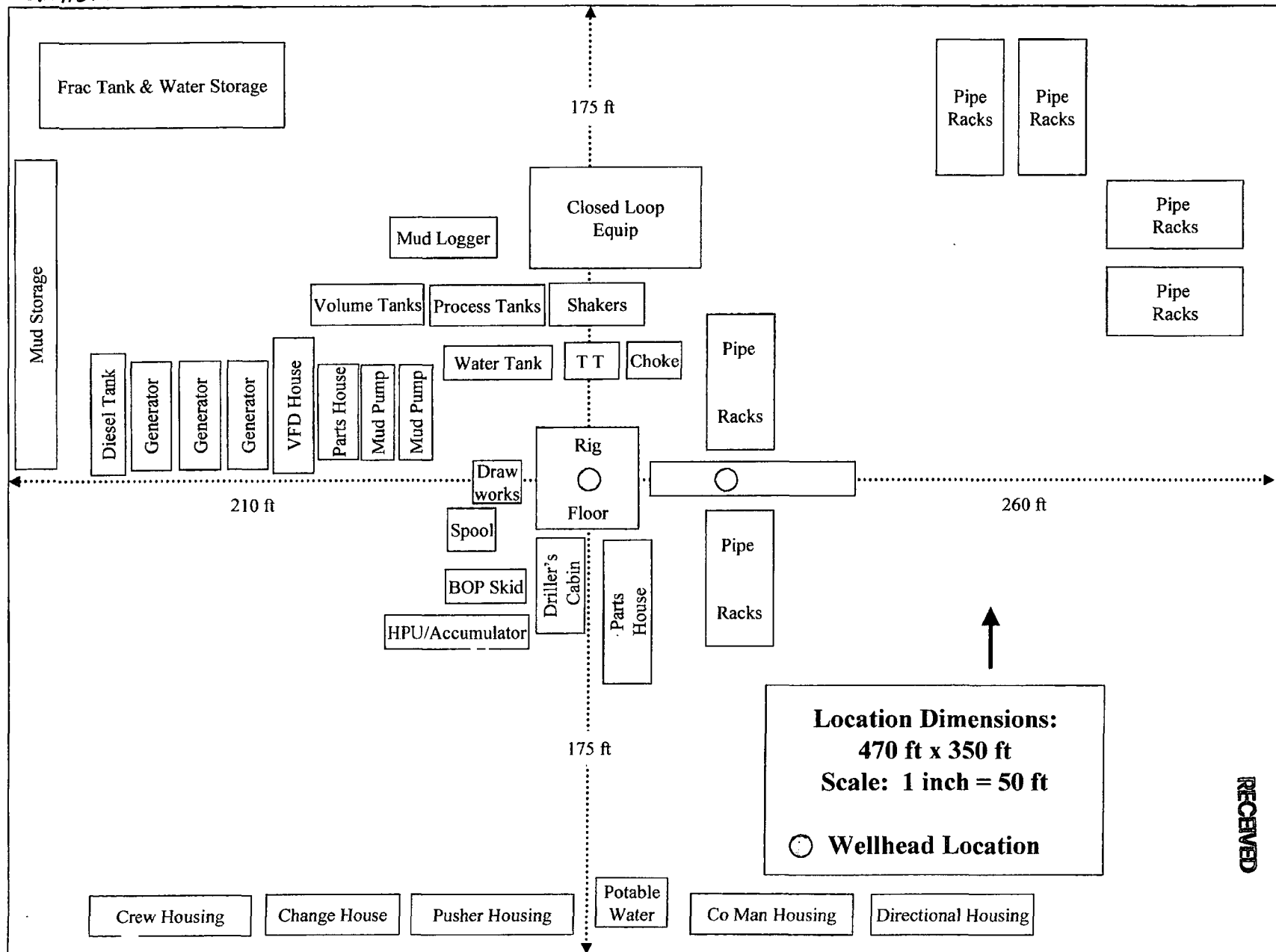
DEVON

PADUCA BREAKS 9 FEDERAL 1H

H&P Flex R'g Location Layout

2 Well Pad

Exhibit D



RECEIVED

JUN 15 2015

HOBBS OGD