

Exhibit A-1

District I
1625 N. French Dr., Hobbs, NM 88240
Phone: (575) 393-6161 Fax: (575) 393-0720
District II
811 S. First St., Artesia, NM 88210
Phone: (575) 748-1283 Fax: (575) 748-9720
District III
1000 Rio Brazos Road, Aztec, NM 87410
Phone: (505) 334-6178 Fax: (505) 334-6170
District IV
1220 S. St. Francis Dr., Santa Fe, NM 87505
Phone: (505) 476-3460 Fax: (505) 476-3462

State of New Mexico
Energy, Minerals & Natural Resources Department
OIL CONSERVATION DIVISION
1220 South St. Francis Dr.
Santa Fe, NM 87505

Form C-102
Revised August 1, 2011
Submit one copy to appropriate
District Office
☐ AMENDED REPORT

WELL LOCATION AND ACREAGE DEDICATION PLAT

| | | |
|---|--|--|
| ¹ API Number 30-025-42629 | ² Pool Code 97955 | ³ Pool Name WC-025, G-06 5263319P, BONE SPRING |
| ⁴ Property Code 314914 | ⁵ Property Name SALADO DRAW 29 26 33 FED COM | ⁶ Well Number 1H |
| ⁷ OGRID No. 4323 | ⁸ Operator Name CHEVRON U.S.A. INC. | ⁹ Elevation 3213' |

¹⁰ Surface Location

| UL or lot no. | Section | Township | Range | Lot Idn | Feet from the | North/South line | Feet from the | East/West line | County |
|---------------|---------|----------|-------------------|---------|---------------|------------------|---------------|----------------|--------|
| D | 29 | 26 SOUTH | 33 EAST, N.M.P.M. | | 200' | NORTH | 1283' | WEST | LEA |

¹¹ Bottom Hole Location If Different From Surface

| UL or lot no. | Section | Township | Range | Lot Idn | Feet from the | North/South line | Feet from the | East/West line | County |
|---------------|---------|----------|-------------------|---------|---------------|------------------|---------------|----------------|--------|
| E | 32 | 26 SOUTH | 33 EAST, N.M.P.M. | 4 | 280' | SOUTH | 355' | WEST | LEA |

| | | | |
|---|-------------------------------|----------------------------------|-------------------------|
| ¹² Dedicated Acres 237.34 | ¹³ Joint or Infill | ¹⁴ Consolidation Code | ¹⁵ Order No. |
|---|-------------------------------|----------------------------------|-------------------------|

No allowable will be assigned to this completion until all interests have been consolidated or a non-standard unit has been approved by the division.

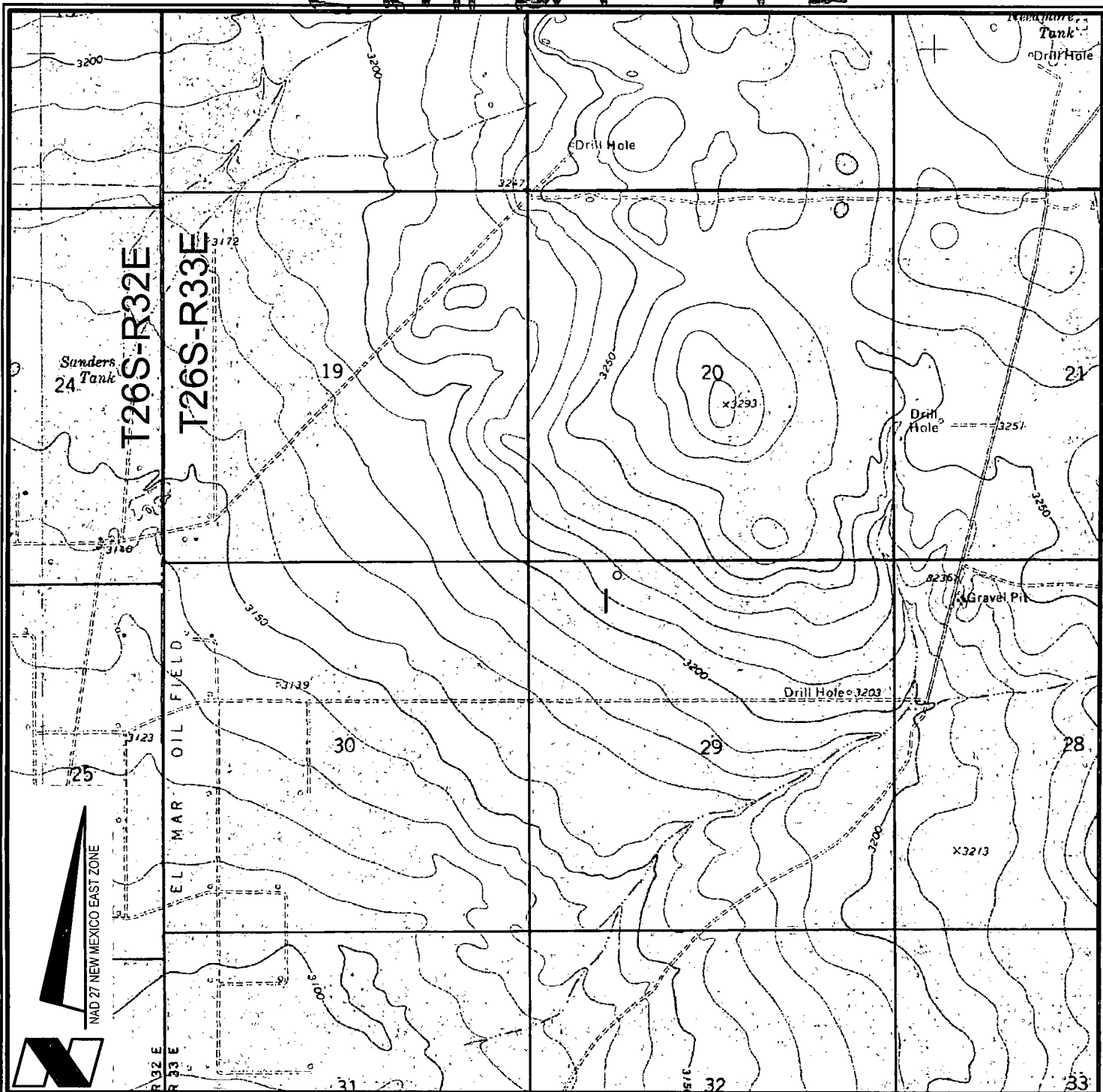
| | | |
|---|--|--|
| <p>SALADO DRAW 29 26 33 FED COM NO. 1H WELL</p> <p>X= 727,838 NAD 27 Y= 372,173 LAT. 32.021087 LONG. 103.598200</p> <p>X= 769,026 NAD83 Y= 372,230 LAT. 32.021212 LONG. 103.598667</p> <p>ELEVATION +3213' NAVD 88</p> | | <p>¹⁷ OPERATOR CERTIFICATION</p> <p>I hereby certify that the information contained herein is true and complete to the best of my knowledge and belief, and that this organization either owns a working interest or unleased mineral interest in the land including the proposed bottom hole location or has a right to drill this well at this location pursuant to a contract with an owner of such a mineral or working interest, or to a voluntary pooling agreement or a compulsory pooling order heretofore entered by the division.</p> <p>Signature: <u>Cindy Herrera-Murillo</u> 9-18-14 Printed Name: <u>Cindy Herrera-Murillo</u> E-mail Address: <u>Cherreramurillo@chevron.com</u></p> <p>¹⁸ SURVEYOR CERTIFICATION</p> <p>I hereby certify that the well location shown on this plat was plotted from field notes of actual surveys made by me or under my supervision, and that the same is true and correct to the best of my belief.</p> <p>Date of Survey: <u>4.30.14</u> Signature and Seal of Professional Surveyor: <u>[Signature]</u> Certificate Number: <u>#15078</u></p> |
|---|--|--|

CORNER COORDINATES TABLE (NAD 27)

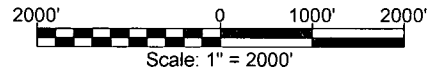
A - Y=372364.44, X=726553.40
B - Y=372373.27, X=727875.49
C - Y=371043.84, X=726563.92
D - Y=371053.27, X=727885.85
E - Y=364535.63, X=726617.46
F - Y=364544.81, X=727938.29

JUN 16 2015

Exhibit A-2



VICINITY MAP



CHEVRON U.S.A. INC.
 SALADO DRAW 29 26 33 FED COM NO. 1H WELL
 LOCATED 200' FNL AND 1283' FWL
 SECTION 29, T26S-R33E
 LEA COUNTY, NEW MEXICO



Lafayette New Orleans Houston
 135 Regency Sq. Lafayette, LA 70508
 Ph. 337-237-2200 Fax. 337-232-3299
www.fenstermaker.com

DRAWN BY: BMO

REVISED:

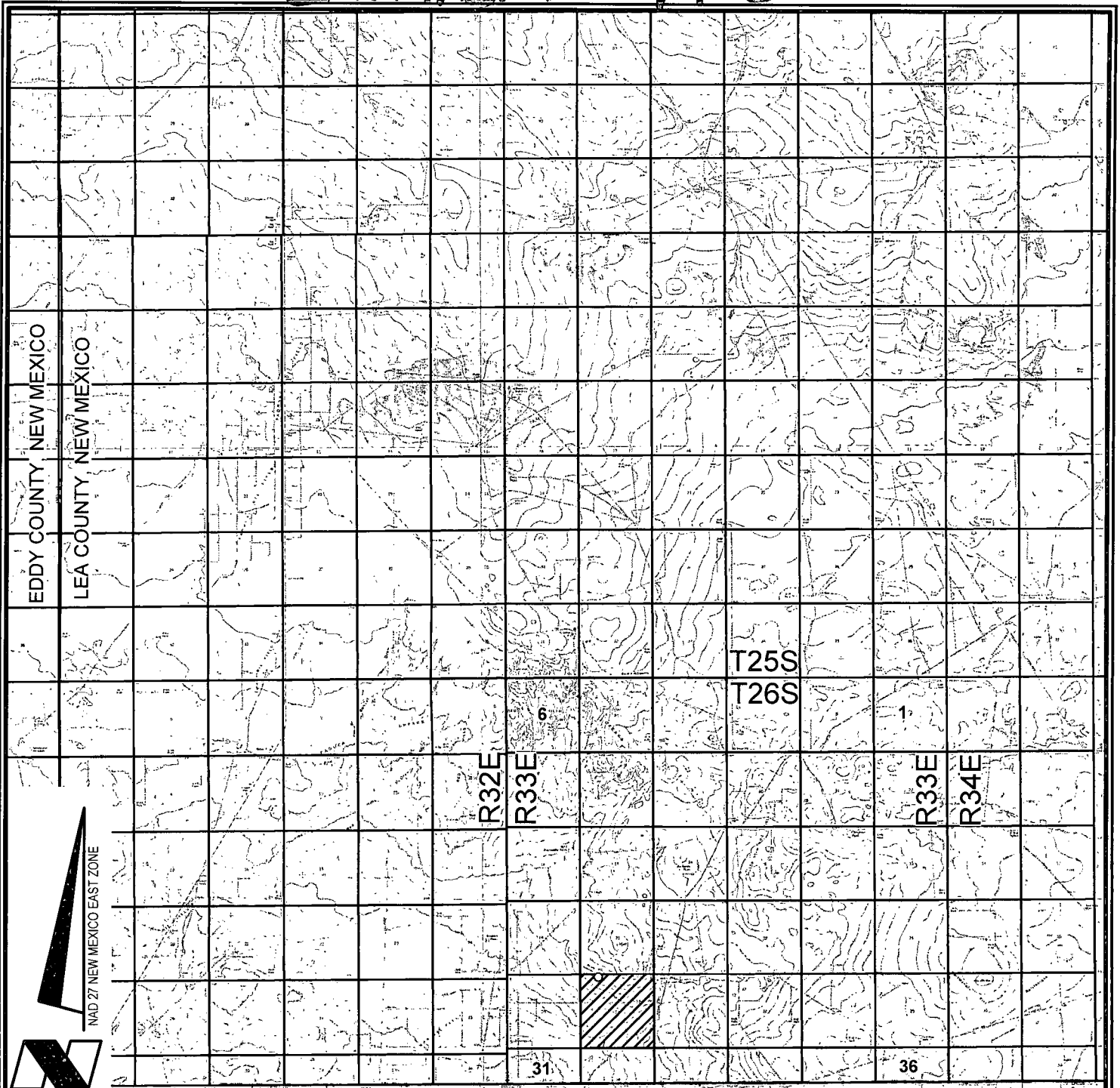
DATE: APRIL 25, 2014

PROJ. MGR.: VHV

SHEET 1 OF 3 SHEETS

FILENAME: T:\2014\2144748\DWG\Salado Draw 29 26 33 Fed Com 1H_APD.dwg

Exhibit A-3



VICINITY MAP

10,000' 0 5,000' 10,000'
Scale: 1" = 10,000'

CHEVRON U.S.A. INC.

SALADO DRAW 29 26 33 FED COM NO. 1H WELL

LOCATED 200' FNL AND 1283' FWL

SECTION 29, T26S-R33E

LEA COUNTY, NEW MEXICO



Lafayette New Orleans Houston
135 Regency Sq. Lafayette, LA 70508
Ph. 337-237-2200 Fax. 337-232-3299
www.fenstermaker.com

DRAWN BY: BMO

REVISED:

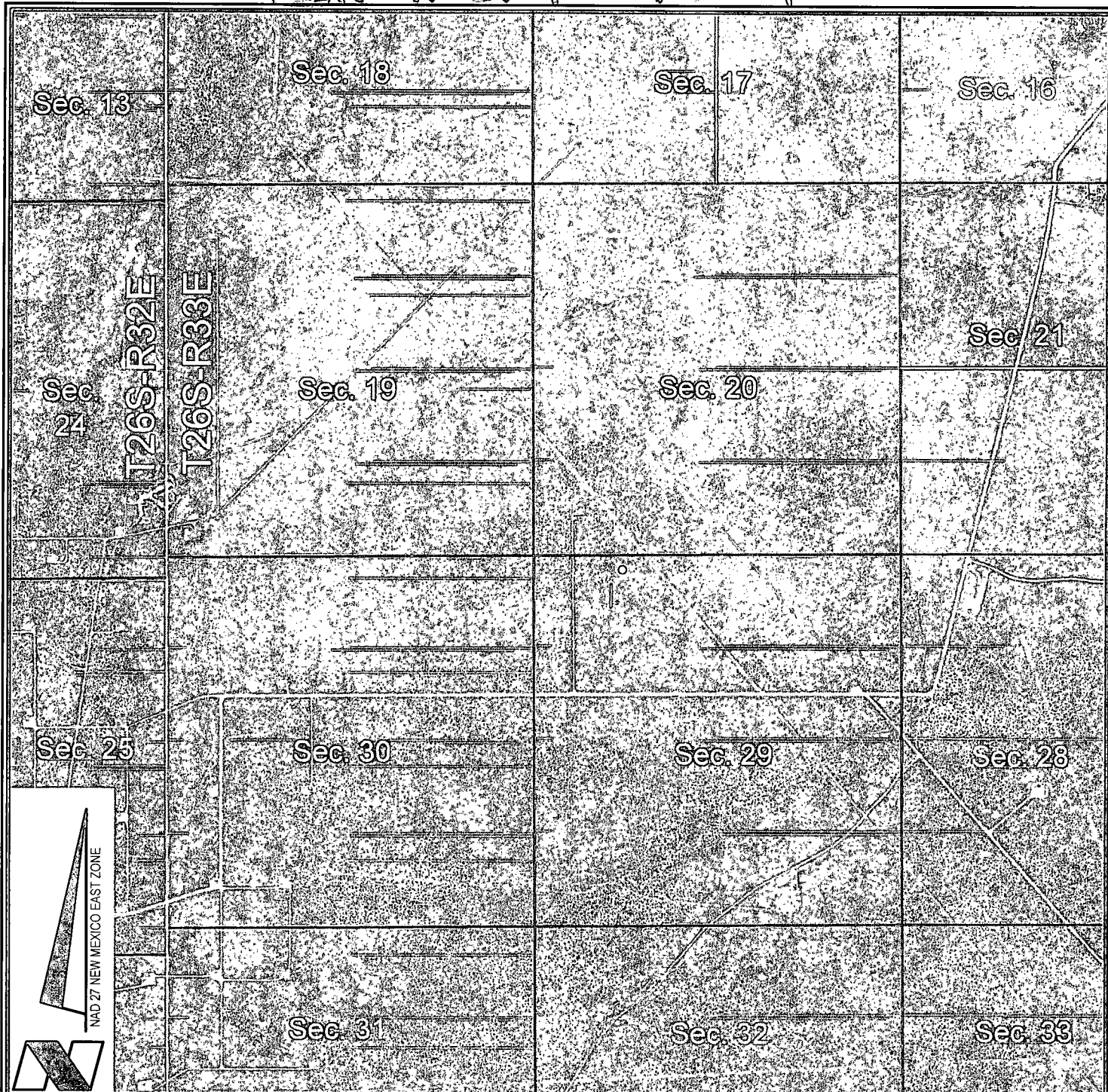
DATE: APRIL 25, 2014

PROJ. MGR.: VHV

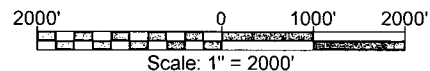
SHEET 2 OF 3 SHEETS



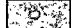
FILENAME: T:\2014\2144748\DWG\Salado Draw 29 26 33 Fed Com 1H_APD.dwg

Exhibit A-4



VICINITY MAP



-  = FEDERAL LAND
-  = FEE LAND
-  = STATE LAND

CHEVRON U.S.A. INC.

SALADO DRAW 29 26 33 FED COM NO. 1H WELL

LOCATED 200' FNL AND 1283' FWL

SECTION 29, T26S-R33E

LEA COUNTY, NEW MEXICO



Lafayette New Orleans Houston
135 Regency Sq. Lafayette, LA 70508
Ph. 337-237-2200 Fax. 337-232-3299
www.fenstermaker.com

DRAWN BY: BMO

REVISED:

DATE: APRIL 25, 2014

PROJ. MGR.: VHV

SHEET 3 OF 3 SHEETS

FILENAME: T:\2014\2144748\DWG\Salado Draw 29 26 33 Fed Com 1H_APD.dwg

