

ONSHORE OIL & GAS ORDER NO. 1  
Approval of Operations on Onshore  
Federal and Indian Oil and Gas Leases

**HOBBS OCD**

**JUN 15 2015**

**RECEIVED**

**Salado Draw 29 26 33 FED #4H**

200' FNL and 1,358' FWL  
Section 29, Township 26, Range 33  
Lea County, New Mexico

**A. EXISTING ROADS/LEASE ROADS (Surface Land)**

Driving directions are from Jal, New Mexico. The location is approximately 50.5 miles from the nearest town, which is Jal, New Mexico. From Jal, NM. Proceed on Highway 128 approximately 30 miles and turn left onto highway 1 and go approximately 14.2 miles to Battle Axe road (CR 2) and turn left or east, and go approximately 6.7 miles and turn left and go about 0.5 of a mile north to the well.

The proposed access to the location is approximately 1 mile off of Battle Axe Road (CR 2) being approximately 1 mile in length and 14' in travel way width with a maximum disturbance area of 20' will be used, and in accordance with guidelines set forth in the BLM Onshore Orders. No turnouts are expected.

Existing county and lease roads will be used to enter proposed access road.

Surface disturbance and vehicular travel will be limited to the approved location and approved access route. Any additional area needed will be approved in advance.

Location, access, and vicinity plats attached hereto. **See Exhibits A-1 to A-4.**

Plans for improvement and/or maintenance of existing roads planned to access the well site: Chevron will improve or maintain existing roads in a condition the same as or better than before operations begin. Chevron will repair pot holes, clear ditches, repair the crown, etc. All existing structures on the entire access route such as cattle guards, other range improvement projects, culverts, etc. will be properly repaired or replaced if they are damaged or have deteriorated beyond practical use. We will prevent and abate fugitive dust as needed, whether created by vehicular traffic, equipment operations, or wind events. BLM written approval will be acquired before application of surfactants, binding agents, or other dust suppression chemicals on roadways.)

**B. NEW OR RECONSTRUCTED ACCESS ROADS (Surface Land)**

There will be approximately 1,600' of new access to be constructed.

**JUN 16 2015**

The new access road will be upgraded to a crowned and ditched road and will be graveled as needed for drilling. If requested by the surface owner, upgrading of this portion of the road will be kept to a minimum.

All existing roads (previously improved) will be used “as is” with the exception of minor blading as needed.

Surface disturbance and vehicular travel will be limited to the approved access route. Any additional area will be approved in advance.

Road Width: 14 – 20 feet traveling surface.

Maximum Grade: Road gradient less than 8%

Crown Design: 2%

Turnouts will be installed along the access route as needed.

Ditch design: Drainage, interception and outlet.

Erosion Control: 6” rock under road.

Re-vegetation of Disturbed Area: All disturbed areas will be seeded by Broadcast or Drill and Crimp. Ground conditions will determine the method used.

Cattle guard(s) will be installed as needed.

Major Cuts and Fills: 2:1 Slope.

Surfacing material (road base derived from caliche or river rock) will be placed on the access road during construction. All surface disturbing activities will be discussed with and agreed to with the surface owner.

**C. LOCATION OF EXISTING WELLS (Geology)**

All wells located within a 1-mile radius of the Surface & Bottom Hole Location. **See Exhibit B.**

**D. LOCATION OF PRODUCTION FACILITIES (Surface Land/Facilities)**

It is anticipated that the existing Porter Brown production facility, located in Section 19, will be utilized and oil to be sold at that tank battery.

The production line will be dual surface laid 4” Flexpipes with a working pressure no greater than 125 psig run along existing disturbances.

Oil and gas measurement will be installed on this well location. **See Exhibits C.**

The permanent water disposal system will utilize the Salado Draw SWD facilities (permitted separately). Facilities will include a water transfer pipeline as well as SWD station storage and injection facilities.

The permanent electrical supply route will be determined prior to construction of permanent distribution lines. A generator will be utilized until permanent power is connected.

**E. LOCATION AND TYPES OF WATER SUPPLY (Surface Land)**

Water will be obtained from a private water source.

Chevron will utilize the fresh water holding pond in Section 29-T26S-R33E. for fresh water.

Water to be hauled into or piped by a private provider into Section 29-T26S-R33E.

A 10" black expanding water pipe transfer line will run approx. 6.5 miles from Section 32-T26-R32E to Section 29-T26S-R33E. All transfer lines will be laid on a "**pre-disturbed**) area.

**F. CONSTRUCTION MATERIALS (Facilities)**

All construction materials will be used from the nearest Private, BLM, or State pit. All material (i.e. shale) will be acquired from private or commercial sources.

No construction material will be needed for well pad construction; subsurface spoil material will be utilized.

Surfacing material (caliche) will be purchased from a supplier having a permitted source of materials.

**G. METHODS FOR HANDLING WASTE DISPOSAL**

A closed system will be utilized consisting of above ground steel tanks.

All wastes accumulated during drilling operations will be contained in a portable trash cage and removed from location and deposited in a state approved facility.

Disposal of cuttings: **Tervita, LLC**

Sewage and gray water before and after treatment are not allowed to be discharged to the ground. They are collected from storage tank(s) and portable potty at drilling and completions locations and transported by an approved transporter to be disposed of at a Chevron's select-for-use disposal facility.

**H. ANCILLARY FACILITIES (Facilities)**

None.

**I. WELLSITE LAYOUT**

The proposed site layout plat is attached showing the Ensign 767 orientation and equipment location. **See Exhibit D.**

In order to level the location, cut and fill will be required. Please see attached Well Location and Acreage Dedication Plat – Exhibits A-1 to A-4.

A locking gate will be installed at the site entrance.

Any fences cut will be repaired. Cattle guards will be installed, if needed.

**J. PLANS FOR RECLAMATION OF THE SURFACE (Facilities)**

Within 6 months, Chevron will contact BLM Surface Management Specialists to devise the best strategies to reduce the size of the location. Current plans for interim reclamation will consist of reclaiming the pad to +/-50 feet outside the anchors, or approximately 200 x 200 feet. **See Exhibit E.**

In addition, the following procedures shall be followed:

- i. Caliche will be removed from reclaimed areas to increase the success of revegetation. Removed caliche that is free of contaminants may be reused for future projects.
- ii. The portions of the cleared well site not needed for operational and safety purposes will be re-contoured to a final or intermediate contour that blends with the surrounding topography as much as possible. Sufficient level area remains for setup of a workover rig and to park vehicles/equipment.
- iii. All surface soil materials (topsoil) are to be removed from the entire cut and fill area and temporarily stockpiled for reuse during interim reclamation. Topsoil will be respread over areas not needed for all-weather operations to ensure successful revegetation. Any topsoil pile set aside should be revegetated to prevent it from eroding and to help maintain its biological viability.
- iv. After all disturbed areas have been satisfactorily prepared, these areas need to be revegetated with the seed mixture advised by the BLM. The seed mix will be evenly and uniformly distributed over the disturbed area. Seeding will be accomplished by using a drilling or, when drilling is not available, by broadcasting the seed. When broadcasting the seed, the amount of seed shall be doubled.

- v. Weed control will be used on disturbed land, including the roads, pads, associated pipeline corridor, and adjacent land affected by the operations. There shall be no primary or secondary noxious weeds in the seed mixture used for reseeding.

### **In the Event of a Dry Hole/Final Reclamation**

Upon final abandonment of the well, a new reclamation plan will be submitted with the Notice of Intent to Abandon (NIA) or Subsequent Report Plug and Abandon (SRA) using the Sundry Notices and Reports on Wells Form 3160-5. The location will be restored to as near as original condition as possible. Reclamation of the surface shall be done in strict compliance with the existing New Mexico Oil Conservation Division regulations and BLM regulations.

In addition, the following procedures shall be followed:

- i. Caliche material from the well pad and access road will be removed and utilized to re-contour to a final contour that blends with the surrounding topography as much as possible. Any caliche material not used will be utilized to repair roads within the lease.
- ii. On sloped ground, the topsoil and interim vegetation will be restripped from portions of the site that are not at the original contour, the well pad recontoured, and the topsoil will be respread over the entire disturbed.
- iii. Topsoil will be distributed over the reclamation area and cross ripped to control erosion
- iv. After all disturbed areas have been satisfactorily prepared, these areas need to be revegetated with the seed mixture advised by the BLM. The seed mix will be evenly and uniformly distributed over the disturbed area. Seeding will be accomplished by using a drilling or, when drilling is not available, by broadcasting the seed. When broadcasting the seed, the amount of seed shall be doubled.  
Weed control will be used on disturbed land, including the roads, pads, associated pipeline corridor, and adjacent land affected by the operations. There shall be no primary or secondary noxious weeds in the seed mixture used for reseeding.

### **K. SURFACE OWNER**

Bureau of Land Management

### **SURFACE TENANT (Surface Land)**

Oliver Kiehne  
P.O. Box 35  
Orla, Texas 79770  
432-448-6337

### **ROAD OWNERSHIP**

All access roads are located on **County Road 2 (Battle Axe) & Federal** lands.

### **L. ADDITIONAL INFORMATION**

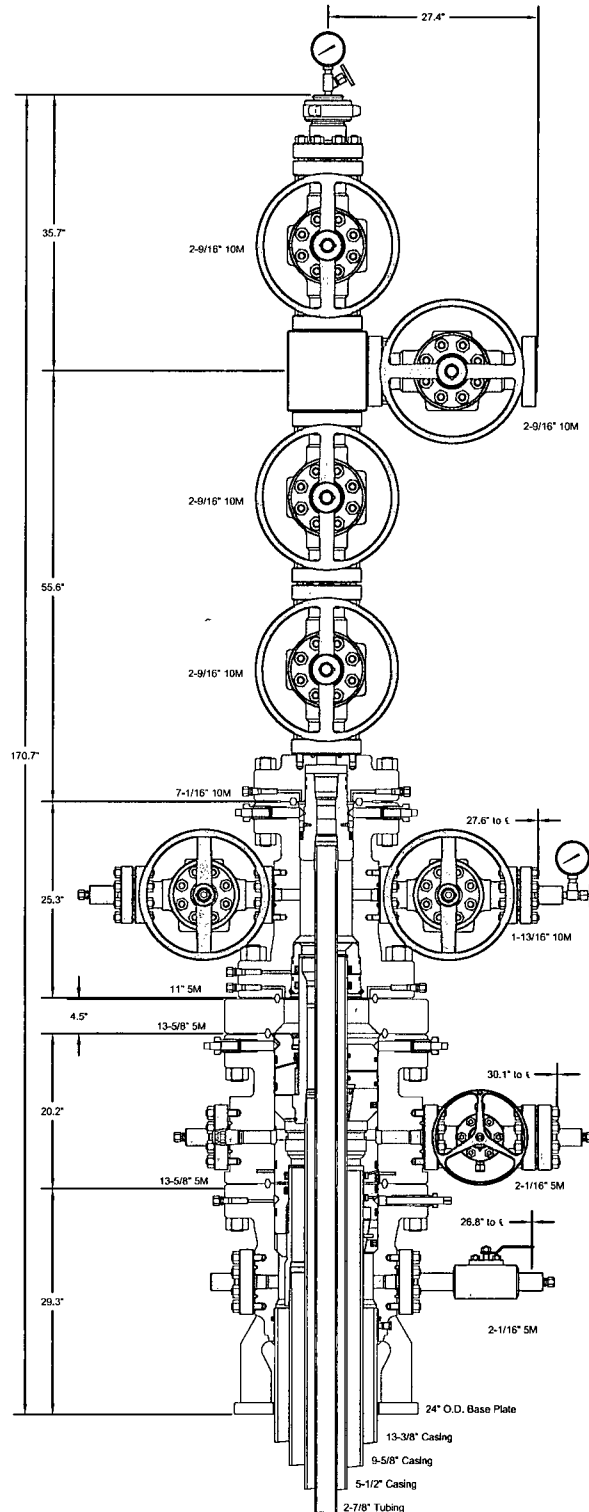
Class III cultural resource inventory report was prepared by Boone Arch Services of NM, Carlsbad, New Mexico for the proposed location. A copy of the report has been sent to the BLM office under separate cover and is also attached for reference. **Exhibit F.**

**M. CHEVRON REPRESENTATIVES**

<b>Project Manager</b> James Ward 1400 Smith Street, 40055 Houston, TX 77002 Office: 713-372-1748 <a href="mailto:JWGB@chevron.com">JWGB@chevron.com</a>	<b>Drilling Engineer</b> Vicente Ruiz 1400 Smith Street, 43104 Houston, TX 77002 Office: +1 (713) 372-6181 <a href="mailto:vruiz@chevron.com">vruiz@chevron.com</a>
<b>Surface Land Representative</b> Stephen Tarr 15 Smith Road, 5103 Claydesta Plaza Midland, TX 79705 Office: +1 432-687-7956 Cell: +1 432-238-6316 <a href="mailto:STarr@chevron.com">STarr@chevron.com</a>	<b>Facility Engineer</b> Nick Wann 15 Smith Road, 6220 Claydesta Plaza Midland, TX 79705 Office: +1 504-224-0597 <a href="mailto:NWann@chevron.com">NWann@chevron.com</a>
<b>Geologist</b> Patrick Taha 1400 Smith Street, 40034 Houston, TX 77002 Office: +1 713-372-1543 <a href="mailto:PatrickTaha@chevron.com">PatrickTaha@chevron.com</a>	<b>Execution Team Lead</b> Ed Van Reet 1400 Smith Street. 40040 Houston, TX 77002 <a href="mailto:EVTR@chevron.com">EVTR@chevron.com</a> 713-372-1559
<b>Regulatory Specialist</b> Cindy Herrera-Murillo 1616 W Bender Blvd, 121 Hobbs, NM 88240 Office: +1 575-263-0431 <a href="mailto:CHerreraMurillo@chevron.com">CHerreraMurillo@chevron.com</a>	<b>Land</b> Robert Morrison 1400 Smith Street. 45010 Houston, TX 77002 Office: 713-372-6707 <a href="mailto:UAMZ@Chevron.com">UAMZ@Chevron.com</a>



GE Oil & Gas



This drawing is the property of GE Oil & Gas Pressure Control LP and is considered confidential. Unless otherwise approved in writing, neither it nor its contents may be used, copied, transmitted or reproduced except for the sole purpose of GE Oil & Gas Pressure Control LP.

CHEVRON USA, INC.  
DELAWARE BASIN

13-3/8" x 9-5/8" x 5-1/2" x 2-7/8" 10M SH2/Conventional  
Wellhead Assembly, With DSA, T-EBS-F Tubing Head,  
T-EN Tubing Hanger and A5PEN Adapter Flange

DRAWN	VJK	19MAR13
APPRV	KN	19MAR13

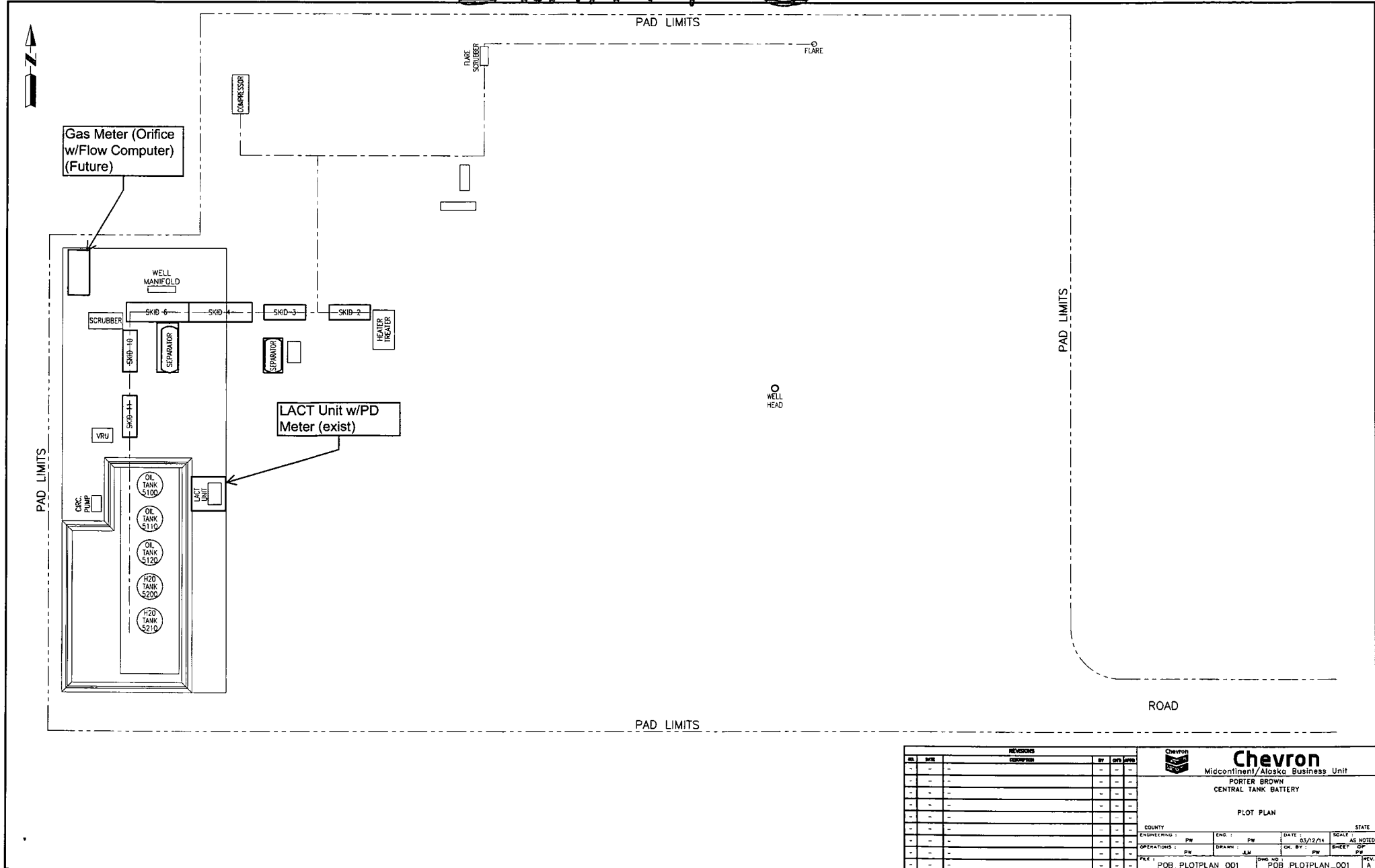
FOR REFERENCE ONLY

DRAWING NO.

AE23705



# Exhibit C



REVISIONS				Chevron			
NO.	DATE	DESCRIPTION	BY	DATE	Midcontinent/Alaska Business Unit		
					PORTER BROWN		
					CENTRAL TANK BATTERY		
					PLOT PLAN		
					COUNTY		
					STATE		
					ENGINEERING	DATE	SCALE
					OPERATIONS	DATE	SCALE
					FILE	DATE	SCALE
					POB_PLOTPLAN_001	POB_PLOTPLAN_001	REV. 1

**NOTE:**

Please be advised, that while reasonable efforts are made to locate and verify pipelines and anomalies using our standard pipeline locating equipment, it is impossible to be 100 % effective. As such, we advise using caution when performing work as there is a possibility that pipelines and other hazards, such as fiber optic cables, PVC pipelines, etc. may exist undetected on site.

**NOTE:**

Many states maintain information centers that establish links between those who dig (excavators) and those who own and operate underground facilities (operators). It is advisable and in most states, law, for the contractor to contact the center for assistance in locating and marking underground utilities. For guidance: New Mexico One Call - [www.nmonecall.org](http://www.nmonecall.org)

**DISCLAIMER:** At this time, C.H. Fenstermaker & Associates, LLC has not performed nor was asked to perform any type of engineering, hydrological modeling, flood plain, or "No Rise" certification analyses, including but not limited to determining whether the project will impact flood hazards in connection with federal/FEMA, state, and/or local laws, ordinances and regulations. Accordingly, Fenstermaker makes no warranty or representation of any kind as to the foregoing issues, and persons or entities using this information shall do so at their own risk.

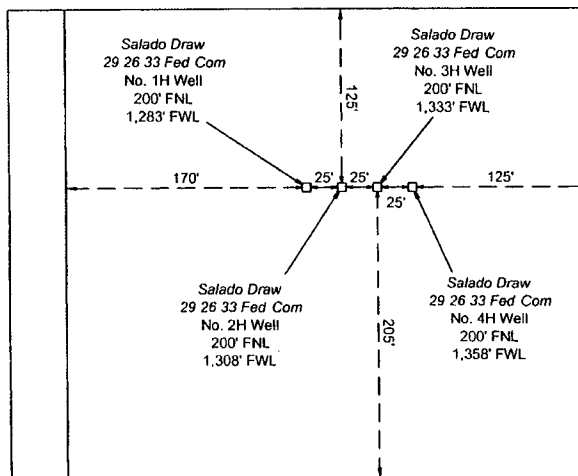
SALADO DRAW 29 26 33 FED COM NO. 1H WELL	SALADO DRAW 29 26 33 FED COM NO. 2H WELL	SALADO DRAW 29 26 33 FED COM NO. 3H WELL	SALADO DRAW 29 26 33 FED COM NO. 4H WELL
X= 727,838 NAD 27 Y= 372,173 LAT. 32.021087 LONG. 103.598200	X= 727,863 NAD 27 Y= 372,173 LAT. 32.021087 LONG. 103.598119	X= 727,888 NAD 27 Y= 372,173 LAT. 32.021087 LONG. 103.598039	X= 727,913 NAD 27 Y= 372,174 LAT. 32.021087 LONG. 103.597958
X= 769,026 NAD83 Y= 372,230 LAT. 32.021212 LONG. 103.598667	X= 769,051 NAD83 Y= 372,230 LAT. 32.021212 LONG. 103.598586	X= 769,076 NAD83 Y= 372,230 LAT. 32.021212 LONG. 103.598506	X= 769,101 NAD83 Y= 372,230 LAT. 32.021212 LONG. 103.598425
ELEVATION +3213' NAVD 88	ELEVATION +3215' NAVD 88	ELEVATION +3215' NAVD 88	ELEVATION +3216' NAVD 88

**R 33 E**

**Sec. 20**

Bureau of Land Management

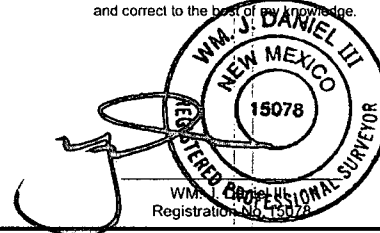
**T  
26  
S**



**Sec. 29**

Bureau of Land Management

FOR THE EXCLUSIVE USE OF  
CHEVRON U.S.A. INC.  
I, WM. J. DANIEL III, Registered Professional  
Land Surveyor, do hereby state this plat is true  
and correct to the best of my knowledge.



DEVELOPMENT PAD DETAIL

SCALE: 1"=100'

100' 0 50' 100'

**CHEVRON U.S.A. INC.**

PROPOSED DEVELOPMENT PAD

SALADO DRAW 29 26 33 FED COM 1H - 4H WELLS

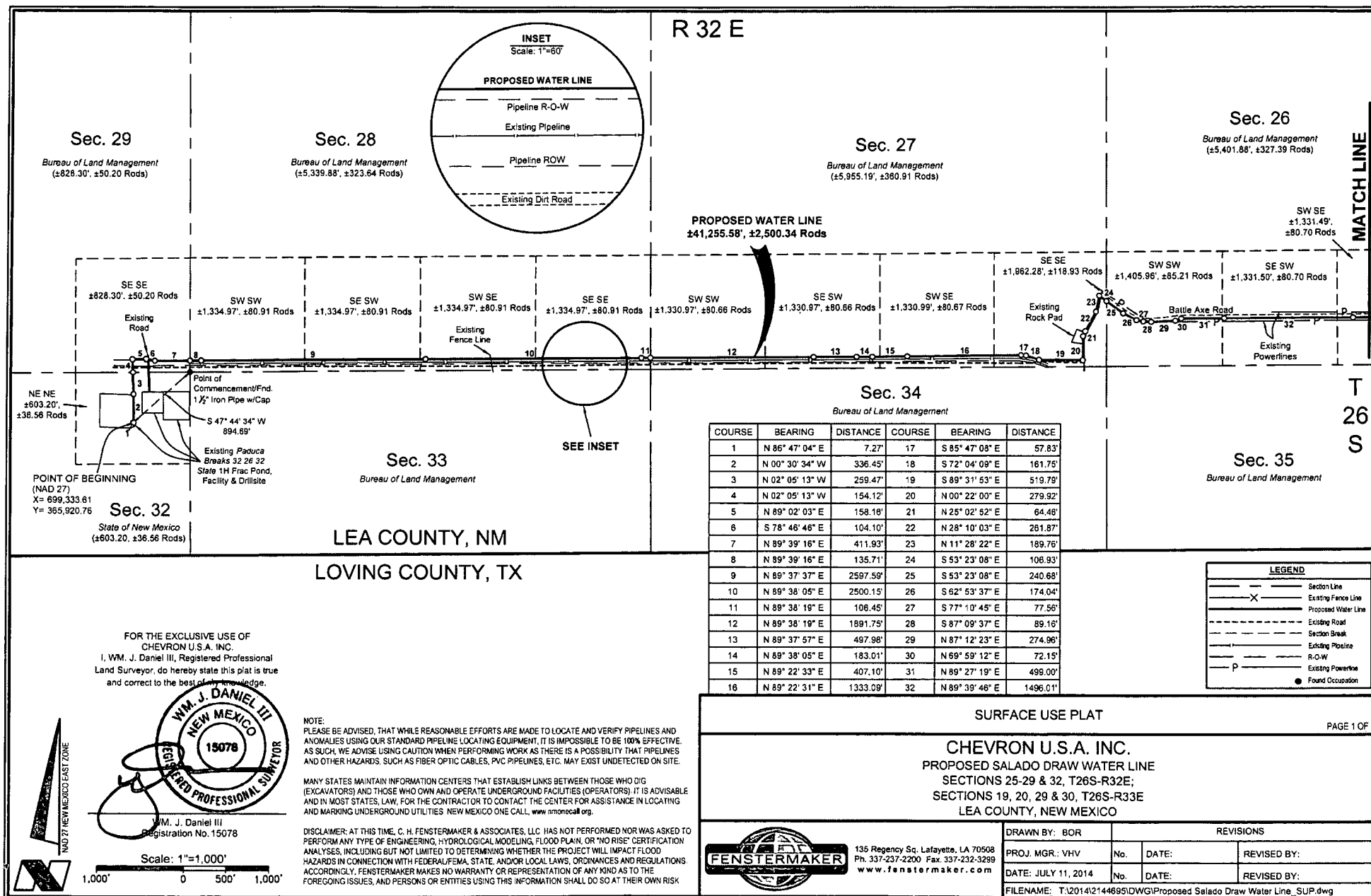
SECTION 29, T26S-R33E

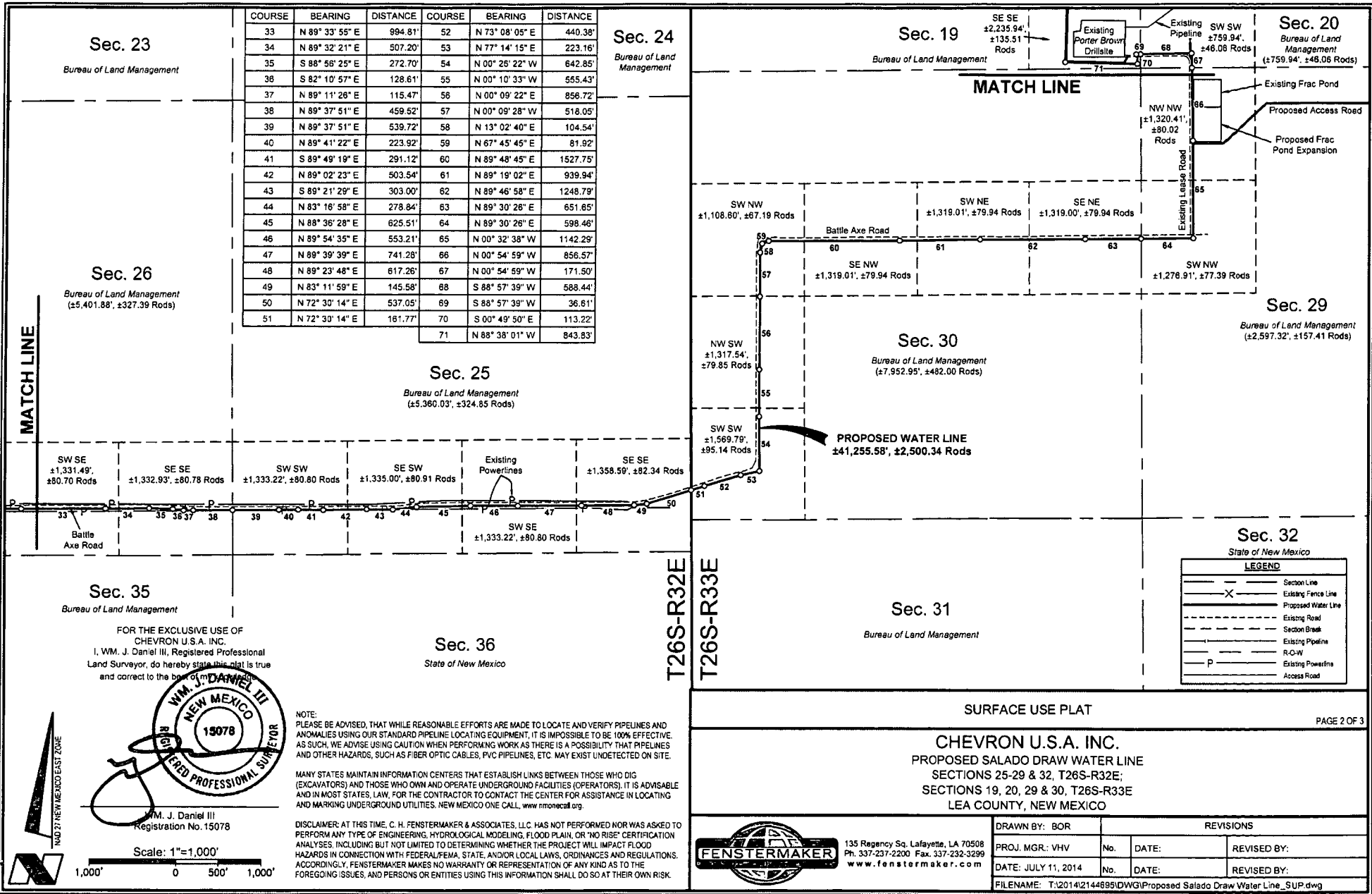
LEA COUNTY, NEW MEXICO



135 Regency Sq. Lafayette, LA 70508  
Ph. 337-237-2200 Fax. 337-232-3299  
[www.fenstermaker.com](http://www.fenstermaker.com)

DRAWN BY: VHV		REVISIONS	
PROJ. MGR.: VHV	No. #	DATE:	REVISED BY:
DATE: 05/09/2014	No. #	DATE:	REVISED BY:
FILENAME: T:\2014\2144748\DWG\Salado Draw 29 26 33 Fed Com 1H-4H_PadDetail.dwg			





COURSE	BEARING	DISTANCE	COURSE	BEARING	DISTANCE
33	N 89° 33' 55" E	994.81'	52	N 73° 08' 05" E	440.38'
34	N 89° 32' 21" E	507.20'	53	N 77° 14' 15" E	223.16'
35	S 88° 56' 25" E	272.70'	54	N 00° 26' 22" W	642.85'
36	S 82° 10' 57" E	128.61'	55	N 00° 10' 33" W	555.43'
37	N 89° 11' 26" E	115.47'	56	N 00° 09' 22" E	856.72'
38	N 89° 37' 51" E	459.52'	57	N 00° 09' 28" W	518.05'
39	N 89° 37' 51" E	539.72'	58	N 13° 02' 40" E	104.54'
40	N 89° 41' 22" E	223.92'	59	N 67° 45' 45" E	81.92'
41	S 89° 49' 19" E	291.12'	60	N 89° 48' 45" E	1527.75'
42	N 89° 02' 23" E	503.54'	61	N 89° 19' 02" E	939.94'
43	S 89° 21' 29" E	303.00'	62	N 89° 46' 58" E	1248.79'
44	N 83° 16' 58" E	278.84'	63	N 89° 30' 26" E	651.65'
45	N 88° 36' 28" E	625.51'	64	N 89° 30' 26" E	598.46'
46	N 89° 54' 35" E	553.21'	65	N 00° 32' 38" W	1142.29'
47	N 89° 39' 39" E	741.28'	66	N 00° 54' 59" W	856.57'
48	N 89° 23' 48" E	617.26'	67	N 00° 54' 59" W	171.50'
49	N 83° 11' 59" E	145.58'	68	S 88° 57' 39" W	588.44'
50	N 72° 30' 14" E	537.05'	69	S 88° 57' 39" W	36.61'
51	N 72° 30' 14" E	161.77'	70	S 00° 49' 50" E	113.22'
			71	N 88° 38' 01" W	843.83'

LEGEND	
	Section Line
	Existing Fence Line
	Proposed Water Line
	Existing Road
	Section Break
	Existing Pipeline
	R-O-W
	Existing Powerline
	Access Road

135 Regency Sq, Lafayette, LA 70508  
Ph. 337-237-2200 Fax. 337-232-3299  
[www.fenstermaker.com](http://www.fenstermaker.com)

DRAWN BY: BOR		REVISIONS	
PROJ. MGR.: VHV	No.	DATE:	REVISED BY:
DATE: JULY 11, 2014	No.	DATE:	REVISED BY:
FILENAME: T:\2014\2144695\DWG\Proposed Salado Draw Water Line_SUP.dwg			

**Section 13**  
Bureau of Land Management

**Section 18**  
Bureau of Land Management

**Section 19**  
Bureau of Land Management  
(±6,456.85', ±391.32 Rods)

**Section 20**  
Bureau of Land Management  
(±759.94', ±46.06 Rods)

**Section 24**  
Bureau of Land Management

**Section 29**  
Bureau of Land Management  
(±2,597.32', ±157.41 Rods)

**Section 30**  
Bureau of Land Management  
(±7,952.95', ±482.00 Rods)

**Legend**

- Section Line
- Existing Fence Line
- Proposed Water Line
- Existing Road
- Section Break
- Existing Pipeline
- R-O-W
- Existing Ditch
- Access Road

**Table of Courses, Bearings, and Distances**

COURSE	BEARING	DISTANCE
72	N 01° 22' 17" E	2,601.83'
73	N 42° 03' 16" W	2,462.22'
74	S 89° 18' 53" W	383.89'
75	S 00° 41' 02" E	15.44'

**Proposed Water Line**  
±41,255.58', ±2,500.34 Rods

**Match Line**

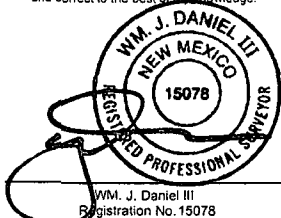
**Other Labels:** Proposed Access Road, Proposed Frac Pond, POINT OF ENDING (NAD 27) X= 723,703.09 Y= 376,844.71, Existing Pipeline, Existing Ditches, Existing Lease Road, Existing Frac Pond, Proposed Frac Pond Expansion, Existing Porter Brown Drillsite.

**FOR THE EXCLUSIVE USE OF**  
CHEVRON U.S.A. INC.  
I, Wm. J. Daniel III, Registered Professional Land Surveyor, do hereby state this plat is true and correct to the best of my knowledge.

**LEGEND**

	Section Line
	Existing Fence Line
	Proposed Water Line
	Existing Road
	Section Break
	Existing Pipeline
	R-O-W
	Existing Ditch
	Access Road

FOR THE EXCLUSIVE USE OF  
CHEVRON U.S.A. INC.  
I, WM. J. Daniel III, Registered Professional  
Land Surveyor, do hereby state this plat is true  
and correct to the best of my knowledge.



WM. J. Daniel III  
Registration No. 15078

NOTE:  
PLEASE BE ADVISED, THAT WHILE REASONABLE EFFORTS ARE MADE TO LOCATE AND VERIFY PIPELINES AND ANOMALIES USING OUR STANDARD PIPELINE LOCATING EQUIPMENT, IT IS IMPOSSIBLE TO BE 100% EFFECTIVE. AS SUCH, WE ADVISE USING CAUTION WHEN PERFORMING WORK AS THERE IS A POSSIBILITY THAT PIPELINES AND OTHER HAZARDS, SUCH AS FIBER OPTIC CABLES, PVC PIPELINES, ETC. MAY EXIST UNDETECTED ON SITE.

MANY STATES MAINTAIN INFORMATION CENTERS THAT ESTABLISH LINKS BETWEEN THOSE WHO DIG (EXCAVATORS) AND THOSE WHO OWN AND OPERATE UNDERGROUND FACILITIES (OPERATORS). IT IS ADVISABLE AND IN MOST STATES, LAW, FOR THE CONTRACTOR TO CONTACT THE CENTER FOR ASSISTANCE IN LOCATING AND MARKING UNDERGROUND UTILITIES. NEW MEXICO ONE CALL, [www.nmonecall.org](http://www.nmonecall.org).

DISCLAIMER: AT THIS TIME, C. H. FENSTERMAKER & ASSOCIATES, LLC, HAS NOT PERFORMED NOR WAS ASKED TO PERFORM ANY TYPE OF ENGINEERING, HYDROLOGICAL MODELING, FLOOD PLAIN, OR "NO RISE" CERTIFICATION ANALYSES, INCLUDING BUT NOT LIMITED TO DETERMINING WHETHER THE PROJECT WILL IMPACT FLOOD HAZARDS IN CONNECTION WITH FEDERAL/FEMA, STATE, AND/OR LOCAL LAWS, ORDINANCES AND REGULATIONS. ACCORDINGLY, FENSTERMAKER MAKES NO WARRANTY OR REPRESENTATION OF ANY KIND AS TO THE FOREGOING ISSUES, AND PERSONS OR ENTITIES USING THIS INFORMATION SHALL DO SO AT THEIR OWN RISK.

**MATCH LINE**

SURFACE USE PLAT

PAGE 3 OF 3

**CHEVRON U.S.A. INC.**  
**PROPOSED SALADO DRAW WATER LINE**  
**SECTIONS 25-29 & 32, T26S-R32E;**  
**SECTIONS 19, 20, 29 & 30, T26S-R33E**  
**LEA COUNTY, NEW MEXICO**



135 Regency Sq. Lafayette, LA 70508  
Ph. 337-237-2200 Fax. 337-232-3299  
[www.fenstermaker.com](http://www.fenstermaker.com)

DRAWN BY: BOR		REVISIONS	
PROJ. MGR.: VHV	No.	DATE:	REVISED BY:
DATE: JULY 11, 2014	No.	DATE:	REVISED BY:
FILENAME: T:\2014\2144895\DWG\Proposed Salado Draw Water Line_SUP.dwg			

**METES AND BOUNDS DESCRIPTION OF  
A PROPOSED WATER LINE  
SECTIONS 25-29 & 32, T26S-R32E & SECTIONS 19, 20, 29 & 30, T26S-R33E  
LEA COUNTY, NEW MEXICO**

Survey of a proposed water line 41,255.58 feet or 2,500.34 rods in length crossing State of New Mexico and Bureau of Land Management lands in Sections 25-29 & 32 of Township 26 South Range 32 East and Sections 19, 20, 29 & 30 of Township 26 South Range 33 East, N.M.P.M Lea County, New Mexico.

**COMMENCING** at the Northeast corner of said Section 32 of Township 26 South Range 32 East at a found 1 1/2" Iron Pipe with Cap; thence South 47 degrees 44 minutes 34 seconds West 894.69 feet to the **POINT OF BEGINNING** having the following coordinates: X= 699,333.61 and Y= 365,920.76 (New Mexico State Plane Coordinate System, East Zone, NAD 27);

**Thence** North 86 degrees 47 minutes 04 seconds East 7.27 feet;

**Thence** North 00 degrees 30 minutes 34 seconds West 336.45 feet;

**Thence** North 02 degrees 05 minutes 13 seconds West 259.47 feet to a common section line of said Sections 32 and 29, Township 26 South Range 32 East;

**Thence** North 02 degrees 05 minutes 13 seconds West 154.12 feet;

**Thence** North 89 degrees 02 minutes 03 seconds East 158.16 feet;

**Thence** South 78 degrees 46 minutes 46 seconds East 104.10 feet;

**Thence** North 89 degrees 39 minutes 16 seconds East 411.93 feet to a common section line of said Sections 29 and 28, Township 26 South Range 32 East;

**Thence** North 89 degrees 39 minutes 16 seconds East 135.71 feet;

**Thence** North 89 degrees 37 minutes 37 seconds East 2,597.59 feet;

**Thence** North 89 degrees 38 minutes 05 seconds East 2,500.15 feet;

**Thence** North 89 degrees 38 minutes 19 seconds East 106.45 feet to a common section line of said Sections 28 and 27, Township 26 South Range 32 East;

**Thence** North 89 degrees 38 minutes 19 seconds East 1,891.75 feet;

**Thence** North 89 degrees 37 minutes 57 seconds East 497.98 feet;

**Thence** North 89 degrees 38 minutes 05 seconds East 183.01 feet;

**Thence** North 89 degrees 22 minutes 33 seconds East 407.10 feet;

**Thence** North 89 degrees 22 minutes 31 seconds East 1,333.09 feet;

**Thence** South 85 degrees 47 minutes 08 seconds East 57.83 feet;

**Thence** South 72 degrees 04 minutes 09 seconds East 161.75 feet;

**Thence** South 89 degrees 31 minutes 53 seconds East 519.79 feet;

**Thence** North 00 degrees 22 minutes 00 seconds East 279.92 feet;

**Thence** North 25 degrees 02 minutes 52 seconds East 64.46 feet;

**Thence** North 28 degrees 10 minutes 03 seconds East 261.87 feet;

**Thence** North 11 degrees 28 minutes 22 seconds East 189.76 feet;

**Thence** South 53 degrees 23 minutes 08 seconds East 106.93 feet to a common section line of said Sections 27 and 26, Township 26 South Range 32 East;

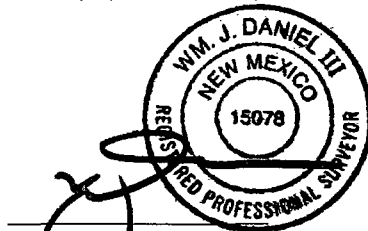
Thence South 53 degrees 23 minutes 08 seconds East 240.68 feet;  
Thence South 62 degrees 53 minutes 37 seconds East 174.04 feet;  
Thence South 77 degrees 10 minutes 45 seconds East 77.56 feet;  
Thence South 87 degrees 09 minutes 37 seconds East 89.16 feet;  
Thence North 87 degrees 12 minutes 23 seconds East 274.96 feet;  
Thence North 69 degrees 59 minutes 12 seconds East 72.15 feet;  
Thence North 89 degrees 27 minutes 19 seconds East 499.00 feet;  
Thence North 89 degrees 39 minutes 46 seconds East 1,496.01 feet;  
Thence North 89 degrees 33 minutes 55 seconds East 994.81 feet;  
Thence North 89 degrees 32 minutes 21 seconds East 507.20 feet;  
Thence South 88 degrees 56 minutes 25 seconds East 272.70 feet;  
Thence South 82 degrees 10 minutes 57 seconds East 128.61 feet;  
Thence North 89 degrees 11 minutes 26 seconds East 115.47 feet;  
Thence North 89 degrees 37 minutes 51 seconds East 459.52 feet to a common section line of said  
Sections 26 and 25, Township 26 South Range 32 East;  
Thence North 89 degrees 37 minutes 51 seconds East 539.72 feet;  
Thence North 89 degrees 41 minutes 22 seconds East 223.92 feet;  
Thence South 89 degrees 49 minutes 19 seconds East 291.12 feet;  
Thence North 89 degrees 02 minutes 23 seconds East 503.54 feet;  
Thence South 89 degrees 21 minutes 29 seconds East 303.00 feet;  
Thence North 83 degrees 16 minutes 58 seconds East 278.84 feet;  
Thence North 88 degrees 36 minutes 28 seconds East 625.51 feet;  
Thence North 89 degrees 54 minutes 35 seconds East 553.21 feet;  
Thence North 89 degrees 39 minutes 39 seconds East 741.28 feet;  
Thence North 89 degrees 23 minutes 48 seconds East 617.26 feet;  
Thence North 83 degrees 11 minutes 59 seconds East 145.58 feet;  
Thence North 72 degrees 30 minutes 14 seconds East 537.05 feet to a common section line of said  
Section 25, Township 26 South Range 32 East and Section 30, Township 26 South Range 33 East;  
Thence North 72 degrees 30 minutes 14 seconds East 161.77 feet;  
Thence North 73 degrees 08 minutes 05 seconds East 440.38 feet;  
Thence North 77 degrees 14 minutes 15 seconds East 223.16 feet;  
Thence North 00 degrees 26 minutes 22 seconds West 642.85 feet;  
Thence North 00 degrees 10 minutes 33 seconds West 555.43 feet;  
Thence North 00 degrees 09 minutes 22 seconds East 856.72 feet;  
Thence North 00 degrees 09 minutes 28 seconds West 518.05 feet;

Thence North 13 degrees 02 minutes 40 seconds East 104.54 feet;  
Thence North 67 degrees 45 minutes 45 seconds East 81.92 feet;  
Thence North 89 degrees 48 minutes 45 seconds East 1,527.75 feet;  
Thence North 89 degrees 19 minutes 02 seconds East 939.94 feet;  
Thence North 89 degrees 46 minutes 58 seconds East 1,248.79 feet;  
Thence North 89 degrees 30 minutes 26 seconds East 651.65 feet to a common section line of said Sections 30 and 29, Township 26 South Range 33 East;  
Thence North 89 degrees 30 minutes 26 seconds East 598.46 feet;  
Thence North 00 degrees 32 minutes 38 seconds West 1,142.29 feet;  
Thence North 00 degrees 54 minutes 59 seconds West 856.57 feet to a common section line of said Sections 29 and 20, Township 26 South Range 33 East;  
Thence North 00 degrees 54 minutes 59 seconds West 171.50 feet;  
Thence South 88 degrees 57 minutes 39 seconds West 588.44 feet to a common section line of said Sections 20 and 19, Township 26 South Range 33 East;  
Thence South 88 degrees 57 minutes 39 seconds West 36.61 feet;  
Thence South 00 degrees 49 minutes 50 seconds East 113.22 feet;  
Thence North 88 degrees 38 minutes 01 seconds West 843.83 feet;  
Thence North 01 degrees 22 minutes 17 seconds East 2,601.83 feet;  
Thence North 42 degrees 03 minutes 16 seconds West 2,462.22 feet;  
Thence South 89 degrees 18 minutes 53 seconds West 383.69 feet;  
Thence South 00 degrees 41 minutes 02 seconds East 15.44 feet to the **POINT OF ENDING** having the following coordinates: X= 723,703.09 and Y= 376,844.71 (New Mexico State Plane Coordinate System, East Zone, NAD 27);

Reference is hereby made to a separate plat of the subject proposed water line.

The bearings recited hereon are oriented to NAD 27 New Mexico East Zone.

This description represents a survey made on the ground of a proposed water line and is intended solely for that purpose. This description does not represent a boundary survey.



Wm. J. Daniel III  
Registered Professional Land Surveyor #15078  
C.H. Fenstermaker & Associates, LLC  
135 Regency Square  
Lafayette, LA 70508  
337-237-2200





Well Pad/Facility Pad (typical)

varies

43'

Flowline ROW

14'

Road  
EDS ROW

15'

1" = 30'

TYPICAL DETAIL SECTION 19



**Chevron**

Midcontinent Business Unit

SALADO DRAW  
DRILLING PROGRAM  
ROAD DETAIL  
TYPICAL ROAD SECTION DETAIL

### CERTIFICATION

I hereby certify that I, or someone under my direct supervision, have inspected the drill site and access route proposed herein; that I am familiar with the conditions which currently exist; that I have full knowledge of state and Federal laws applicable to this operation; that the statements made in this APD package are, to the best of my knowledge, true and correct; and, that the work associated with the operations proposed will be performed in conformity with this APD package and the terms and conditions under which it is approved. I also certify that I, or the company I represent, am responsible for the operations conducted under this application. These statements are subject to the provisions of 18 U.S.C. 1001 for the filing of a false statement.

Executed this 30<sup>th</sup> day of July, 2014

Name:   
James Ward - Project Manager

Address: 1400 Smith Street, 40050  
Houston, TX 77002

Office 713-372-1748

E-mail: jwgb@chevron.com

NMCRIS No.: 131136

## NMCRIS INVESTIGATION ABSTRACT FORM (NIAF)

<b>1. NMCRIS Activity No.:</b>  131136	<b>2a. Lead Agency:</b> US Bureau of Land Management Carlsbad Field Office	<b>2b. Other Agency(ies):</b>	<b>3. Lead Agency Report No.:</b>
--	---	-------------------------------	-----------------------------------

**4. Title of Report:**

A Class III Archaeological Survey for Chevron USA, Inc's Proposed Salado Draw 29 26 33 Fed Com #1H, #2H, #3H and #4H Well Pad, Battery Pad, and Access Road

**Author(s)**

Hill, Rebecca L. and Joshua W. Broxson

**5. Type of Report**

☒ Negative

☐ Positive

**6. Investigation Type**

- ☐ Research Design ☒ Archaeological Survey/Inventory ☐ Architectural Survey/Inventory ☐ Test Excavation ☐ Excavation  
☐ Collections/Non-Field Study ☐ Compliance Decision Based on Previous Inventory ☐ Overview/Lit Review ☐ Monitoring  
☐ Ethnographic Study ☐ Site/Property Specific Visit ☐ Historic Structures Report ☐ Other

**7. Description of Undertaking (what does the project entail?):**

A pedestrian cultural resources survey was conducted on 7 and 21 July 2014 for Chevron USA, Inc's proposed Salado Draw 29 26 33 Fed Com #1H, #2H, #3H and #4H well pad, battery pad, and access road. The proposed project lies in Lea County, NM, on federal land managed by the Bureau of Land Management Carlsbad Field Office (BLM/CFO) in Section 29 (N½NW¼) of T26S R33E. The well pad (370 ft. x 330 ft.), topsoil stockpile (40 ft. x 330 ft.), battery pad (100 ft. x 100 ft.), and access road (324 ft. x 30 ft.) measure 155,020 sq. ft. or 3.55 acres. The well pad, battery pad, and topsoil stockpile were surveyed using 15 m parallel transects across a 600 ft. x 675 ft. block. A portion of the access road measuring 95 ft. x 30 ft. fell within the block survey. The remaining 229 ft. x 30 ft. portion of access road was surveyed using two 15 m parallel transects, one on either side of the staked centerline. The survey measures 427,900 sq. ft. or 9.82 acres. The survey extended north onto federal land in Section 20 (N½NW¼) of T26S R33E. During the survey it was noted that ARMS GIS data placed the boundaries of LA 89707 just within the southeastern corner of the survey buffer. An extensive search of both the ARMS GIS plotting and BLM/CFO plotting of LA 89707 revealed no cultural materials. No treatment is recommended and the proposed project is recommended for approval as staked.

**8. Dates of Investigation:** from: 07-Jul-2014 to: 21-Jul-2014

**9. Report Date:** 22-Jul-2014

**10. Performing Agency/Consultant:** Boone Arch Services of NM, LLC

**Principal Investigator:** Rebecca L. Hill

**Field Supervisor:** Rebecca L. Hill

**Field Personnel Names:** Rebecca L. Hill  
Hans W. Schmid III

**Historian / Other:**

**11. Performing Agency/Consultant Report No.:**

BASNM 04-14-81

**12. Applicable Cultural Resource Permit No(s):**

BLM Permit No.: 190-2920-12-S

NMCRIS No.: 131136

**13. Client/Customer (project proponent):**

Chevron USA, Inc

**Contact:** Stephen Tarr

**Address:** 15 Smith Rd., Midland, TX 79705

**Phone:** 432-687-7956

**14. Client/Customer Project No.:**

**15. Land Ownership Status (must be indicated on project map):**

**Land Owner (By Agency)**

**Acres Surveyed Acres in APE**

US Bureau of Land Management Carlsbad Field Office	9.82	3.55
<b>TOTALS</b>	9.82	3.55

**16. Records Search(es):**

Date(s) of HPD/ARMS File Review: 9 Jun 2014	Name of Reviewer(s): M. Jones	
Date(s) of Other Agency File Review: 9 Jun 2014	Name of Reviewer(s): M. Jones	Agency: BLM/CFO

**17. Survey Data:**

**a. Source Graphics** [ ] NAD 27 [ x ] NAD 83 **Note: NAD 83 is the NMCRIS standard.**

☒ USGS 7.5' (1:24,000) topo map ☐ Other topo map, Scale:

☒ GPS Unit Accuracy ☒ <1.0m ☐ 1-10m ☐ 10-100m ☐ >100m

☐ Aerial Photo(s)

**Other Source Graphic(s):**

**b. USGS 7.5' Topographic Map Name**

**USGS Quad Code**

Paduca Breaks East, NM	32103-A5
------------------------	----------

**c. County(ies):** LEA

**d. Nearest City or Town:** Jal, NM

**e. Legal Description:**

**Township (N/S)**

**Range (E/W)**

**Section**

26S	33E	20
26S	33E	29

**Projected legal description?** [ ] Yes [ x ] No [ ] Unplatted

**f. Other Description (e.g. well pad footages, mile markers, plats, land grant name, etc.):**

Salado Draw 29 26 33 Fed Com # 1H: 200 ft. FNL and 1,283 ft. FWL

Salado Draw 29 26 33 Fed Com # 2H: 200 ft. FNL and 1,308 ft. FWL

Salado Draw 29 26 33 Fed Com # 3H: 200 ft. FNL and 1,333 ft. FWL

Salado Draw 29 26 33 Fed Com # 4H: 200 ft. FNL and 1,358 ft. FWL

[ ] Continuation

**18. Survey Field Methods:**

NMCRIS No.: 131136

Intensity: ☒ 100% coverage

☐ <100% coverage

Configuration: ☒ block survey units

☒ linear survey units (l x w): 229 ft. x 100 ft.

☐ other survey units (specify):

Scope: ☒ non-selective (all sites/properties recorded) ☐ selective/thematic (selected sites/properties recorded)

Coverage Method: ☒ systematic pedestrian coverage

☐ other method (describe):

Survey Interval (m): 15

Crew Size: 2

Fieldwork Dates: from: 07-Jul-2014

to: 21-Jul-2014

Survey Person Hours: 1.50

Recording Person Hours: 0.50

Total Hours: 2.00

**Additional Narrative:**

The proposed project lies within ¼ mile of one previously recorded archaeological site: LA 89707. The southeastern corner of the cultural buffer intersects the boundaries of LA 89707 as plotted in ARMS GIS. As a result, both the ARMS and BLM/CFO GIS locations for LA 89707 were examined for cultural materials. The site was not relocated in either location and no treatment is recommended. For a detailed description of the site, see Table 1 on page 5.

[ ] Continuation

**19. Environmental Setting (NRCS soil designation; vegetative community; elevation; etc.):**

According to the Natural Resources Conservation Service' online database, the project area soil consists of Pyote soils and dune land. Pyote soils are all designated as "loamy sand" and typically support black grama, dropseed, and bluestem grasslands with an even distribution of sand sage and shinnery oak. Mesquite is also common to these soils. The current vegetative community consists of soapweed yucca, broom snakeweed, shinnery oak, mesquite, winterfat, littleleaf sumac, and desert grasses. The project area is situated approximately 3.75 miles south of Paduca Breaks and 23 miles east of the Pecos River. The elevation ranges from 3,200 ft to 3,220 ft above mean sea level.

[ ] Continuation

**20.a. Percent Ground Visibility:** 90%

**b. Condition of Survey Area (grazed, bladed, undistributed, etc.):**

The survey area lies includes a northwest/southeast running buried pipeline and is just east of a recently constructed frac pond.

[ ] Continuation

**21. CULTURAL RESOURCE FINDINGS**

☐ Yes, see next report section

☒ No, discuss why:

No cultural resources were encountered during the survey. ARMS GIS data places LA 89707 just within the southeastern corner of the cultural buffer; however, extensive examinations of both the ARMS GIS and BLM/CFO GIS plotting of LA 89707 failed to reveal any cultural materials.

[ ] Continuation

**22. Attachments (check all appropriate boxes):**

[ x ] USGS 7.5 Topographic Map with sites, isolates, and survey area clearly drawn (required)

[ x ] Copy of NMCRIS Map Check (required)

[ ] LA Site Forms - new sites (with sketch map & topographic map) if applicable

[ x ] LA Site Forms (update) - previously recorded & un-relocated sites (first 2 pages minimum)

[ ] Historic Cultural Property Inventory Forms, if applicable

[ ] List and Description of Isolates, if applicable

[ ] List and Description of Collections, if applicable

**23. Other Attachments:**

[ ] Photographs and Log

[ x ] Other Attachments  
(Describe): BLM/CFO Map

NMCRIS No.: 131136

24. I certify the information provided above is correct and accurate and meets all applicable agency standards.

Principal Investigator/Qualified Supervisor: Printed Name: Rebecca L. Hill

Signature:

*Rebecca Hill*

Date:

*23 July 2014*

Title: Principal Investigator

25. Reviewing Agency

Reviewer's Name/Date:

Accepted [ ]

Rejected [ ]

26. SHPO

Reviewer's Name/Date:

HPD Log #:

Date sent to ARMS:

### CULTURAL RESOURCE FINDINGS

*(fill in appropriate section(s))*

#### SURVEY RESULTS:

Archaeological Sites discovered and registered: 0

Archaeological Sites discovered and NOT registered: 0

Previously recorded archaeological sites revisited (site update form required): 0

Previously recorded archaeological sites not relocated (site update form required): 1

TOTAL ARCHAEOLOGICAL SITES (visited & recorded): 0

Total isolates recorded: 0

☒ Non-selective isolate recording?

HCPI properties discovered and registered: 0

HCPI properties discovered and NOT registered: 0

Previously recorded HCPI properties revisited: 0

Previously recorded HCPI properties not relocated: 0

TOTAL HCPI PROPERTIES (visited & recorded, including acequias): 0

#### MANAGEMENT SUMMARY:

According to ARMS GIS data, the southeastern corner of the cultural buffer surveyed for Chevron USA, Inc's proposed Salado Draw 29 26 33 Fed Com #1H, #2H, #3H and #4H well pad, battery pad and access road intersected the boundaries of LA 89707. However, extensive examinations of both the ARMS GIS and BLM/CFO GIS plotting of LA 89707 failed to reveal any cultural materials; no further treatment is recommended and the project is recommended for approval as staked. If cultural materials are encountered during construction, work should be halted and archaeologists with BLM/CFO should be notified immediately.

[ ] Continuation

IF REPORT IS NEGATIVE, YOU ARE DONE AT THIS POINT.

#### SURVEY LA/HCPI NUMBER LOG

Sites/Properties Discovered:

LA/HCPI No. Field/Agency No.

Eligible? (Y/N/U, applicable criteria)

NMCRIS No.: 131136

Previously recorded revisited sites/HCPI properties:

LA/HCPI No.	Field/Agency No.	Eligible? (Y/N/U, applicable criteria)
LA89707		Not Relocated

---

**MONITORING LA NUMBER LOG (site form required)**

Sites Discovered (site form required):

Previously recorded sites (site update form required):

LA No.          Field/Agency No.

LA No.          Field/Agency No.

Areas outside known nearby site boundaries monitored?      ☐ Yes

☐ No, Explain why:

---

**TESTING & EXCAVATION LA NUMBER LOG (site form required)**

Tested LA number(s)

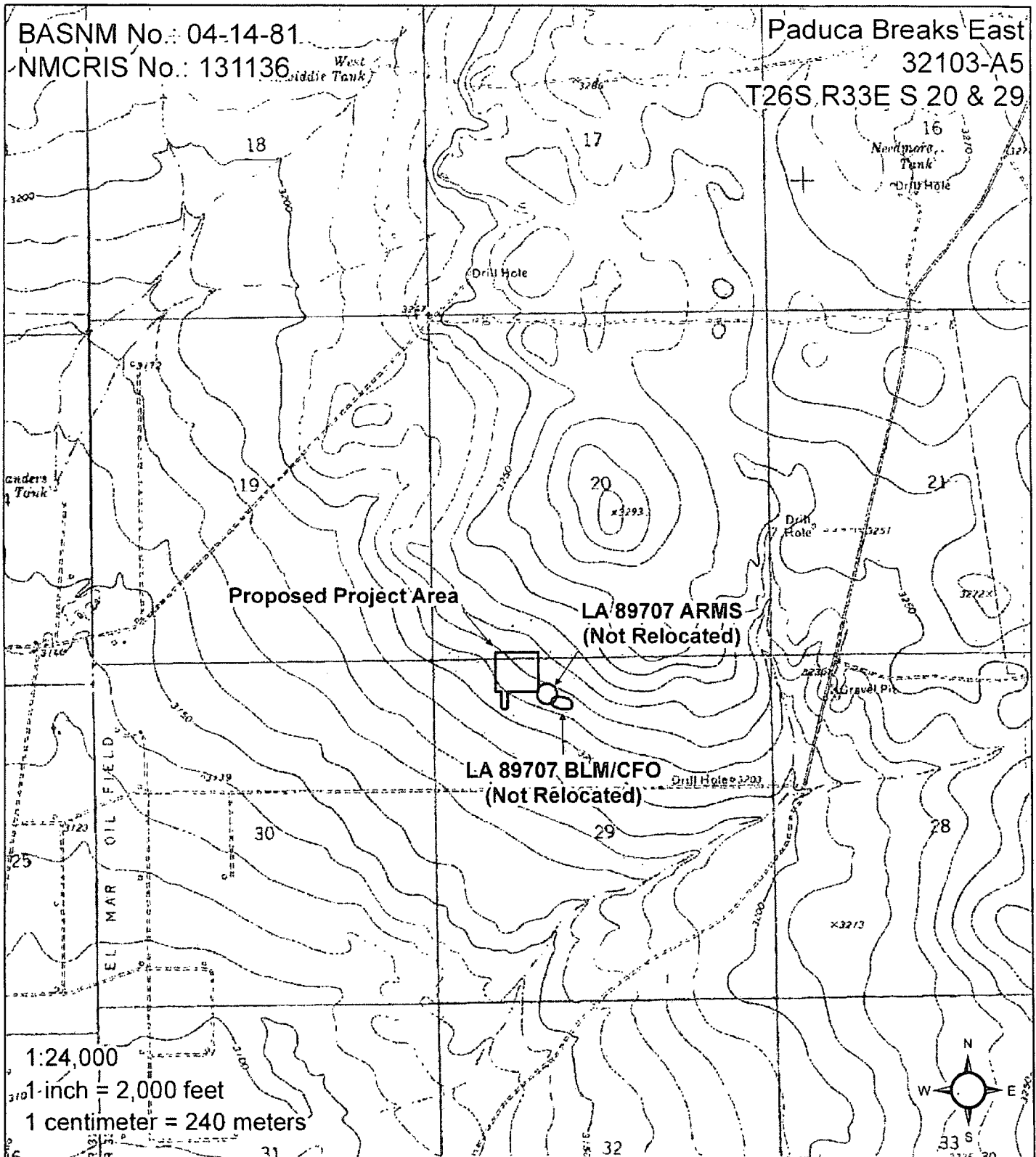
Excavated LA number(s)

---

**Table 1. Previously Recorded Archaeological Sites within ¼ Mile.**

LA No.	Cultural/Temporal Affiliation	Eligibility
89707	Unknown Aboriginal (9500 BC – 1880 AD)	Not Relocated

Chevron USA, Inc  
Proposed Salado Draw 29 26 33 Fed Com #1H, #2H, #3H & #4H  
Well Pad, Battery Pad & Access Road



### Legend

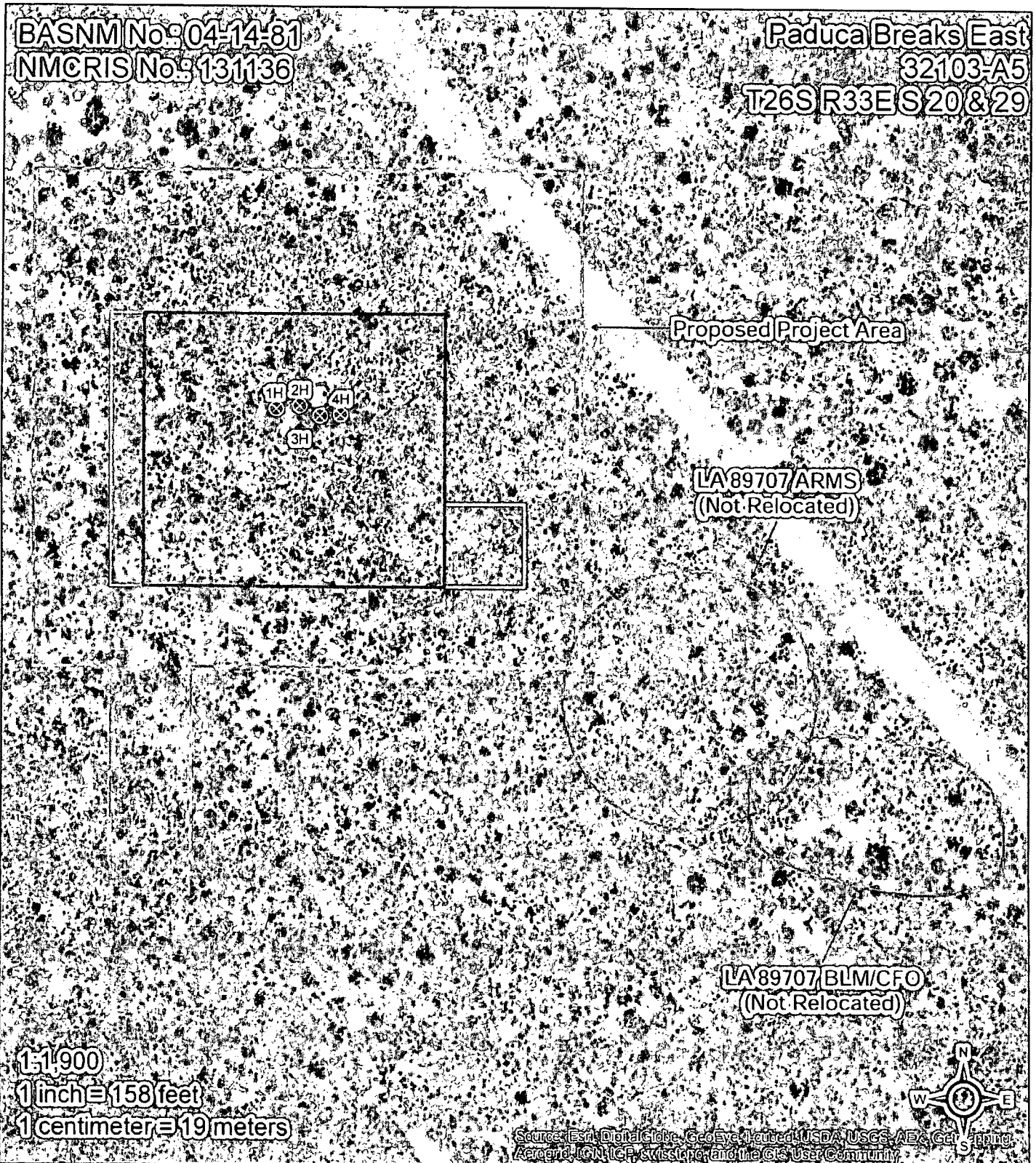
- |                         |     |                  |       |                     |                          |
|-------------------------|-----|------------------|-------|---------------------|--------------------------|
| ■ Proposed Project Area | BLM | DOE              | BOI   | □ Private           | □ NM State Game and Fish |
| ■ Archaeological Site   | BOR | □ Forest Service | □ NPS | NM State Trust Land | NM State Park            |



Chevron USA, Inc  
Proposed Salado Draw 29 26 33 Fed Com #1H, #2H, #3H & #4H  
Well Pad, Battery Pad & Access Road

BASNM No: 04-14-81  
NMCRIS No: 131136

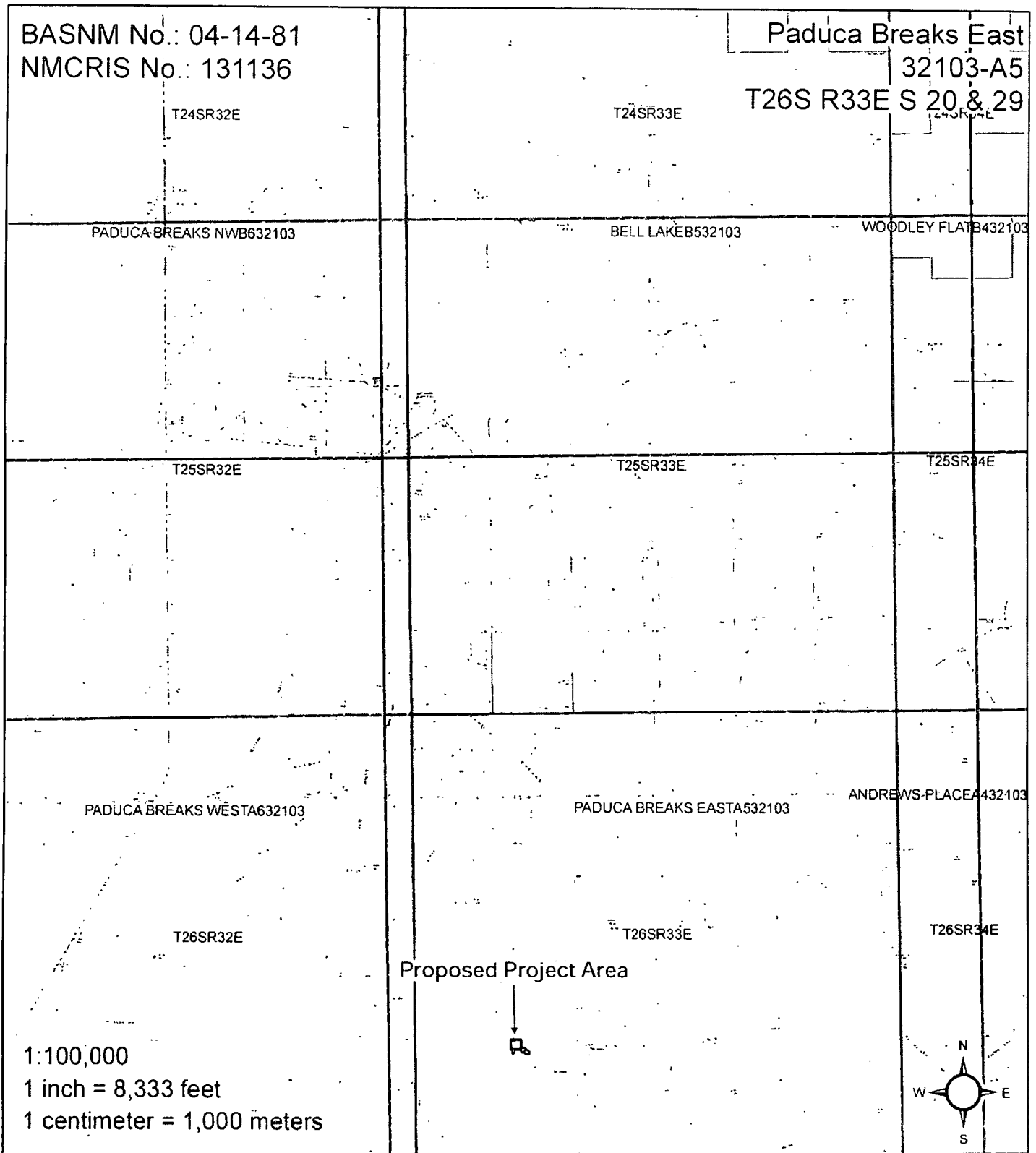
Paduca Breaks East  
32103-A5  
T26S R33E S20 & 29



## Legend

Drill Hole □ Proposed Project Area □ Well Pad □ Battery Pad □ Topsoil Stockpile □ Archaeological Site

Chevron USA, Inc  
Proposed Salado Draw 29 26 33 Fed Com #1H, #2H, #3H & #4H  
Well Pad, Battery Pad & Access Road



### Legend

☐ Proposed Project Area    BLM    DOE    BOI    ☐ Private    ☐ NM State Game and Fish  
☐ Archaeological Site    BOR    ☐ Forest Service    ☐ NPS    NM State Trust Land    NM State Park