

UNITED STATES
DEPARTMENT OF THE INTERIOR
BUREAU OF LAND MANAGEMENT

UCD-HOBBS

FORM APPROVED
OMB NO. 1004-0137
Expires: October 31, 2014

WELL COMPLETION OR RECOMPLETION REPORT AND LOG

HOBBS OCD
JUN 15 2015

1a. Type of Well ☒ Oil Well ☐ Gas Well ☐ Dry ☐ Other
b. Type of Completion: ☐ New Well ☒ Work Over ☐ Deepen ☐ Plug Back ☐ Diff. Reserv.,
Other: _____

2. Name of Operator
Apache Corporation (873)

3. Address 303 Veterans Airpark Lane Suite 1000
Midland TX 79705

3a. Phone No. (include area code)
432/818-1062

4. Location of Well (Report location clearly and in accordance with Federal requirements)*
At surface 330' FNL & 1650' FEL UL B Sec 11 T21S R37E
At top prod. interval reported below
At total depth

14. Date Spudded 03/08/1952

15. Date T.D. Reached 04/23/1952

16. Date Completed 04/11/2014
☐ D & A ☒ Ready to Prod.

17. Elevations (DF, RKB, RT, GL)*
3469' GL

18. Total Depth: MD 7831' TVD

19. Plug Back T.D.: MD 6105' TVD

20. Depth Bridge Plug Set: MD RBP @ 6105' TVD

21. Type Electric & Other Mechanical Logs Run (Submit copy of each)
CNL/CBL

22. Was well cored? ☒ No ☐ Yes (Submit analysis)
Was DST run? ☒ No ☐ Yes (Submit report)
Directional Survey? ☒ No ☐ Yes (Submit copy)

23. Casing and Liner Record (Report all strings set in well)

Hole Size	Size/Grade	Wt. (#/ft.)	Top (MD)	Bottom (MD)	Stage Cementer Depth	No. of Sk. & Type of Cement	Slurry Vol. (BBL)	Cement Top*	Amount Pulled
	10-3/4"	32#		255'		250 sx (circ)		750' (TS)	
	7-5/8"	26.4#		3149'		1150 sx		3150' (TS)	
	5-1/2"	15.5&17		7830'		583 sx			

24. Tubing Record

Size	Depth Set (MD)	Packer Depth (MD)	Size	Depth Set (MD)	Packer Depth (MD)	Size	Depth Set (MD)	Packer Depth (MD)
2-7/8"	5999'							

25. Producing Intervals

Formation	Top	Bottom	Perforated Interval	Size	No. Holes	Perf. Status
A) Blinebry			5785' - 5916'	2 SPF	80	Producing
B) Drinkard			6561' - 6737'			RBP @ 6105'
C)						
D)						

27. Acid, Fracture, Treatment, Cement Squeeze, etc.

Depth Interval	Amount and Type of Material
Blinebry 5785'-5916'	4200 gal acid; 30,786 gal SS-25; 6572# sand; 1470 gal gel
Drinkard 6561'-6737'	3024 gal acid

28. Production - Interval A

Date First Produced	Test Date	Hours Tested	Test Production	Oil BBL	Gas MCF	Water BBL	Oil Gravity Corr. API	Gas Gravity	Production Method
4/11/14	5/22/14	24	→	25	73	80	37.0		Pumping
Choke Size	Tbg. Press. Flwg. SI	Csg. Press.	24 Hr. Rate	Oil BBL	Gas MCF	Water BBL	Gas/Oil Ratio	Well Status	
			→				2920	Producing	

28a. Production - Interval B

Date First Produced	Test Date	Hours Tested	Test Production	Oil BBL	Gas MCF	Water BBL	Oil Gravity Corr. API	Gas Gravity	Production Method
			→						
Choke Size	Tbg. Press. Flwg. SI	Csg. Press.	24 Hr. Rate	Oil BBL	Gas MCF	Water BBL	Gas/Oil Ratio	Well Status	
			→						

ACCEPTED FOR RECORD
JUN 4 2015
PR Swartz
BUREAU OF LAND MANAGEMENT
CARLSBAD FIELD OFFICE
JUN 26 2015

recomp _____ Add new well _____
Cancel Well _____ Create Pool _____
E-PERMITTING -- New Well _____
Comp _____ P&A _____ TA _____
CSNG _____ Loc Chng ADD PERMIT
ADD NEW WELL

*(See instructions and spaces for additional data on page 2)

28b. Production - Interval C

Date First Produced	Test Date	Hours Tested	Test Production →	Oil BBL	Gas MCF	Water BBL	Oil Gravity Corr. API	Gas Gravity	Production Method
Choke Size	Tbg. Press. Flwg. SI	Csg. Press.	24 Hr. Rate →	Oil BBL	Gas MCF	Water BBL	Gas/Oil Ratio	Well Status	

28c. Production - Interval D

Date First Produced	Test Date	Hours Tested	Test Production →	Oil BBL	Gas MCF	Water BBL	Oil Gravity Corr. API	Gas Gravity	Production Method
Choke Size	Tbg. Press. Flwg. SI	Csg. Press.	24 Hr. Rate →	Oil BBL	Gas MCF	Water BBL	Gas/Oil Ratio	Well Status	

29. Disposition of Gas (Solid, used for fuel, vented, etc.)

SOLD

30. Summary of Porous Zones (Include Aquifers):

Show all important zones of porosity and contents thereof: Cored intervals and all drill-stem tests, including depth interval tested, cushion used, time tool open, flowing and shut-in pressures and recoveries.

31. Formation (Log) Markers

Formation	Top	Bottom	Descriptions, Contents, etc.	Name	Top
					Meas. Depth

32. Additional remarks (include plugging procedure):

33. Indicate which items have been attached by placing a check in the appropriate boxes:

- ☒ Electrical/Mechanical Logs (1 full set req'd.)
 ☐ Geologic Report
 ☐ DST Report
 ☐ Directional Survey
- ☐ Sundry Notice for plugging and cement verification
 ☐ Core Analysis
 ☒ Other: OCD Form C-104

34. I hereby certify that the foregoing and attached information is complete and correct as determined from all available records (see attached instructions)*

Name (please print) Reesa FisherTitle Sr Staff Reg AnalystSignature Reesa FisherDate 05/30/2014

Title 18 U.S.C. Section 1001 and Title 43 U.S.C. Section 1212, make it a crime for any person knowingly and willfully to make to any department or agency of the United States any false, fictitious or fraudulent statements or representations as to any matter within its jurisdiction.

(Continued on page 3)

(Form 3160-4, page 2)

WELL DATA SHEET

Last Update: 5-22-14

Lease Name: EBDU #014 (Lockhart B-11 #5)

API No: 30-025-06482

Location: 320 N / 1650 E
Unit B, Sec 11, T-21S, R-37E

County: Lea ST: NM

Spud Date: 3-8-52 Well Elev: 3469' GL 11' KB

TD Date: 4-23-52 Completion Date: 5-2-52

TD: 7831' PBTD: 6105' TOC: 3150' (TS)

Blinebry 10 3/4" 32# - 255' 250' x (Circ)

Csg Size: 7 5/8" Wt: 26.4" Grd: J-55 Dpth: 3149' Cmt: 1150 SX

Producing Formation: Blinebry / Drinkard

Perfs: From 5785' to 5916' 2 spf 6561' to 6725' - 1 spf

to /spf to

IP: BOPD BWPD MCF/D

Well History:

Need to pull RBP after Blinebry tests.

Well Equipment:

Pumping Unit: Lufkin 320-250-120

Motor Type: HP: POC:

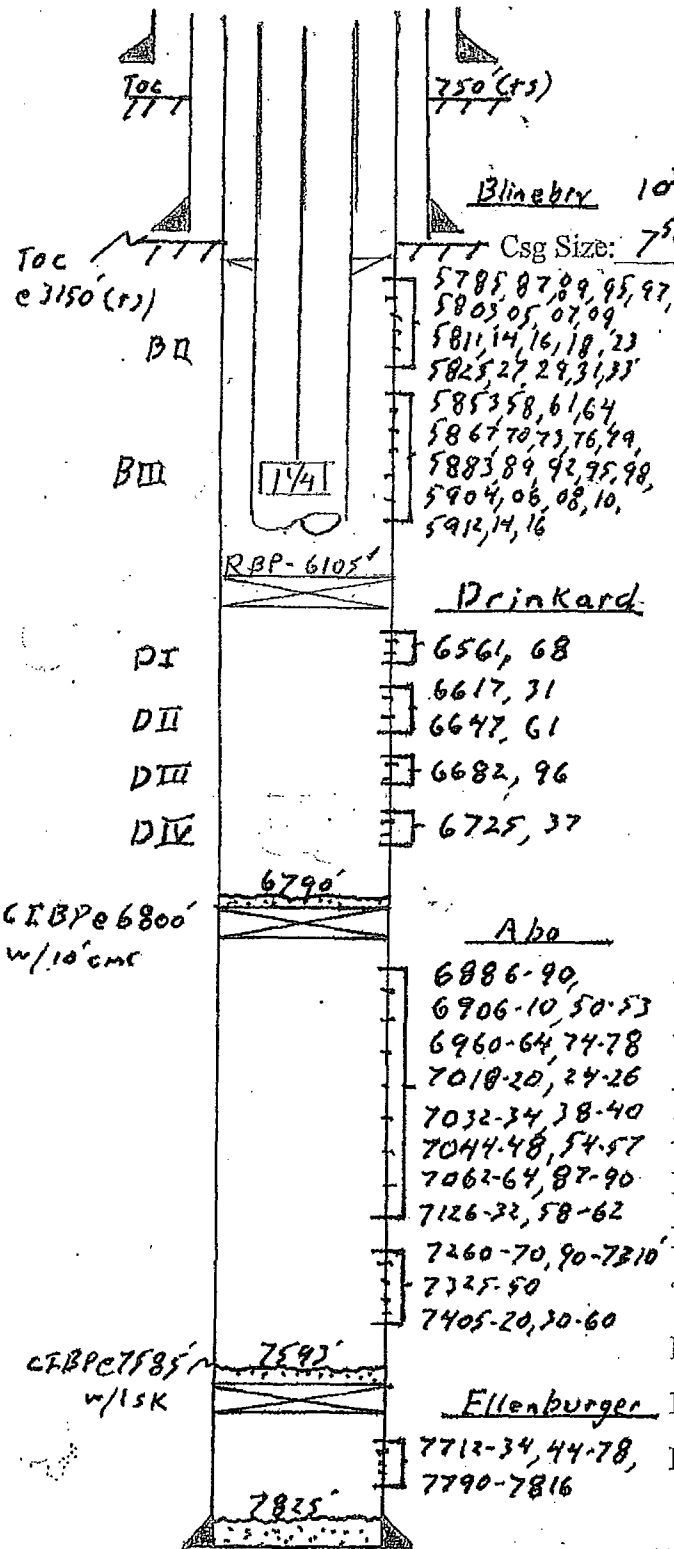
Tbg: 195 Jts 2 7/8" Size 6.5" Grade J-55

MA @ 6000' SN @ 5999' TAC @ 5717' (4-11-14)

Rods: 65-7/8" KD + 166-3/4" KD + 6-1 1/2" KB

Pump: 2" X 1 1/4" X 20" R40C (5-16-14)

Csg Size: 5 1/2" Wt: 15.5" J-55 Grd: N-80 Dpth: 7830' Cmt: 583 SX



TD: 7831'