

District I  
1625 N. French Dr., Hobbs, NM 88240  
Phone: (575) 393-6161 Fax: (575) 393-0720  
District II  
811 S. First St., Artesia, NM 88210  
Phone: (575) 748-1283 Fax: (575) 748-9720  
District III  
1000 Rio Brazos Road, Aztec, NM 87410  
Phone: (505) 334-6178 Fax: (505) 334-6170  
District IV  
1220 S. St. Francis Dr., Santa Fe, NM 87505  
Phone: (505) 476-3460 Fax: (505) 476-3462

State of New Mexico  
Energy, Minerals & Natural Resources  
Department  
OIL CONSERVATION DIVISION  
1220 South St. Francis Dr.  
Sante Fe, NM 87505

JUL 01 2015

Revised August 1, 2011

Submit one copy to appropriate

District Office

RECEIVED

☐ AMENDED REPORT

## WELL LOCATION AND ACREAGE DEDICATION PLAT

<sup>1</sup> API Number 30-025- <b>42663</b>	<sup>2</sup> Pool Code 96661	<sup>3</sup> Pool Name Hardin Tank; Bone Spring
<sup>4</sup> Property Code <b>315009</b>	<sup>5</sup> Property Name BULLDAWG 33 FED	<sup>6</sup> Well Number #601H
<sup>7</sup> GRID No. 7377	<sup>8</sup> Operator Name EOG RESOURCES, INC.	<sup>9</sup> Elevation 3328'

<sup>10</sup>Surface Location

UL or lot no.	Section	Township	Range	Lot Idn	Feet from the	North/South line	Feet from the	East/West line	County
A	33	25-S	34-E	-	320'	NORTH	850'	EAST	LEA

UL or lot no.	Section	Township	Range	Lot Idn	Feet from the	North/South line	Feet from the	East/West line	County
A	28	25-S	34-E	-	230'	NORTH	380'	EAST	LEA

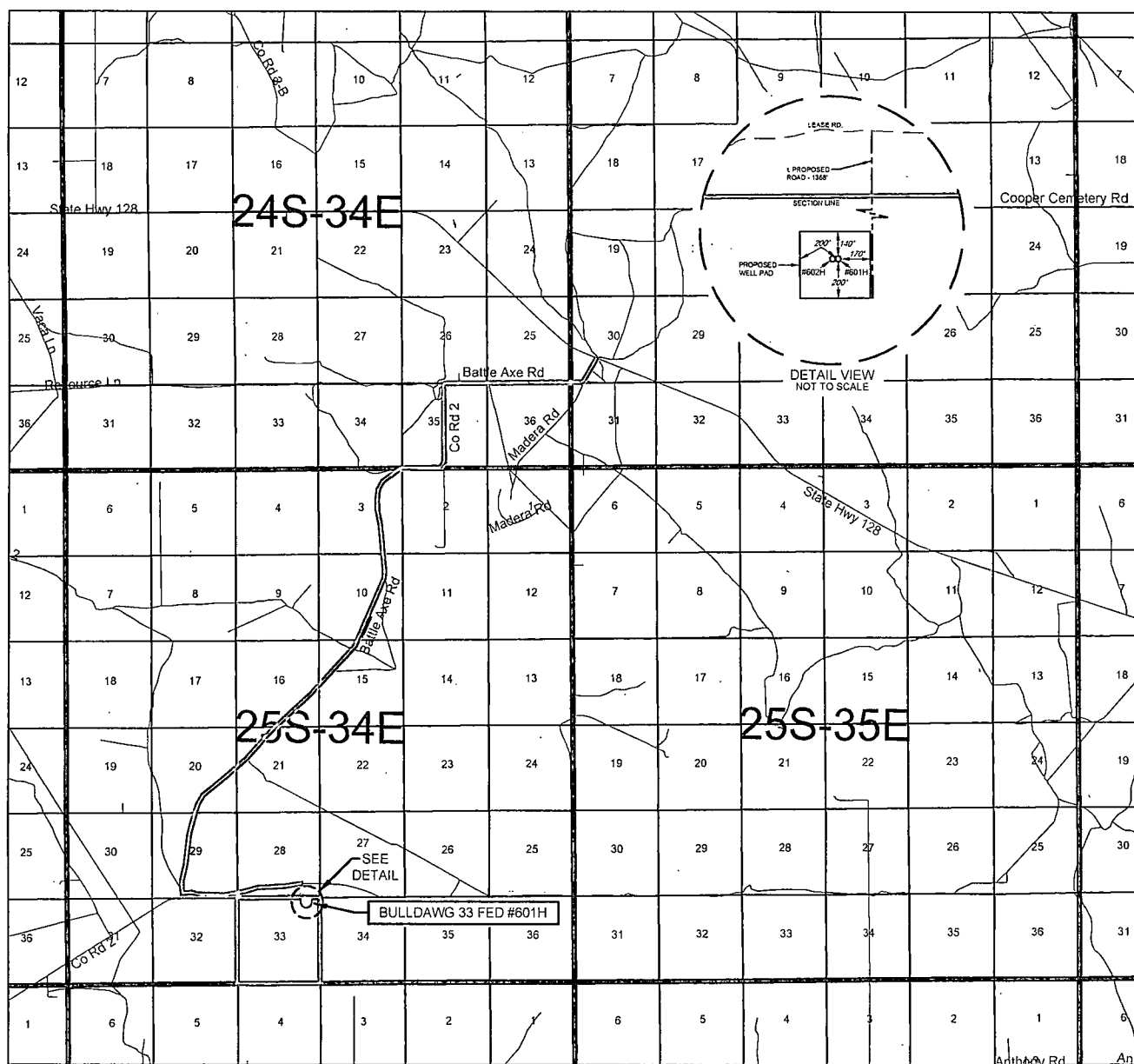
<sup>12</sup> Dedicated Acres	<sup>13</sup> Joint or Infill	<sup>14</sup> Consolidation Code	<sup>15</sup> Order No.
160.00			

No allowable will be assigned to this completion until all interests have been consolidated or a non-standard unit has been approved by the division.

<p><sup>16</sup></p> <p>20 21</p> <p>29 28</p> <p>BOTTOM HOLE LOCATION NEW MEXICO EAST NAD 1927 X=768211 Y=404090 LAT.: N 32.1079977 LONG.: W 103.4671184</p> <p>LOWER MOST PERF. NEW MEXICO EAST NAD 1927 X=768212 Y=403990 LAT.: N 32.1077229 LONG.: W 103.4671182</p> <p>UPPER MOST PERF. NEW MEXICO EAST NAD 1927 X=768252 Y=399371 LAT.: N 32.0950237 LONG.: W 103.4671099</p> <p>SURFACE LOCATION NEW MEXICO EAST NAD 1927 X=767787 Y=398717 LAT.: N 32.0932372 LONG.: W 103.4686262</p> <p>29 28</p> <p>32 33</p>	<p><sup>17</sup>OPERATOR CERTIFICATION</p> <p>I hereby certify that the information contained herein is true and complete to the best of my knowledge and belief, and that this organization either owns a working interest or unleased mineral interest in the land including the proposed bottom hole location or has a right to drill this well at this location pursuant to a contract with an owner of such a mineral or working interest, or to a voluntary pooling agreement or a compulsory pooling order heretofore entered by the division.</p> <p><i>Stan Wagner</i> 11/14/14 Signature Date</p> <p>Stan Wagner Printed Name</p> <p>E-mail Address</p> <p><sup>18</sup>SURVEYOR CERTIFICATION</p> <p>I hereby certify that the well location shown on this plat was plotted from field notes of actual surveys made by me or under my supervision, and that the same is true to the best of my belief.</p> <p>08/05/2014 Date of Survey Signature and Seal of Professional Surveyor MICHAEL J. BROWN NEW MEXICO 18329 PROFESSIONAL SURVEYOR</p> <p>Certificate Number</p>
--	--

JUL 07 2015

# EXHIBIT 2 VICINITY MAP



LEASE NAME & WELL NO.: BULLDAWG 33 FED #601H

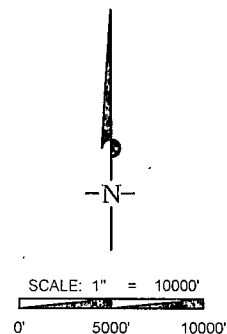
SECTION 33 TWP 25-S RGE 34-E SURVEY N.M.P.M.  
COUNTY LEA STATE NM  
DESCRIPTION 320' FNL & 850' FEL

## DISTANCE & DIRECTION

FROM INT. OF NM-18 N & NM-128. GO WEST ON NM-128 W ±14.1 MILES.  
THENCE SOUTH (LEFT) ON BATTLE AXE RD. ±9.4 MILES. THENCE EAST  
(LEFT) ON LEASE RD. ±1.4 MILES TO A POINT ±1368 FEET NORTH OF  
THE LOCATION.

THIS EASEMENT/SERVITUDE LOCATION SHOWN HEREON HAS BEEN SURVEYED ON THE GROUND UNDER MY SUPERVISION AND PREPARED ACCORDING TO THE EVIDENCE FOUND AT THE TIME OF SURVEY, AND DATA PROVIDED BY EOG RESOURCES, INC. THIS CERTIFICATION IS MADE AND LIMITED TO THOSE PERSONS OR ENTITIES SHOWN ON THE FACE OF THIS PLAT AND IS NON-TRANSFERABLE. THIS SURVEY IS CERTIFIED FOR THIS TRANSACTION ONLY.

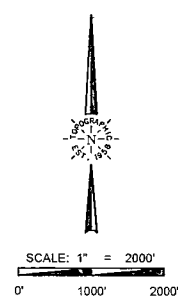
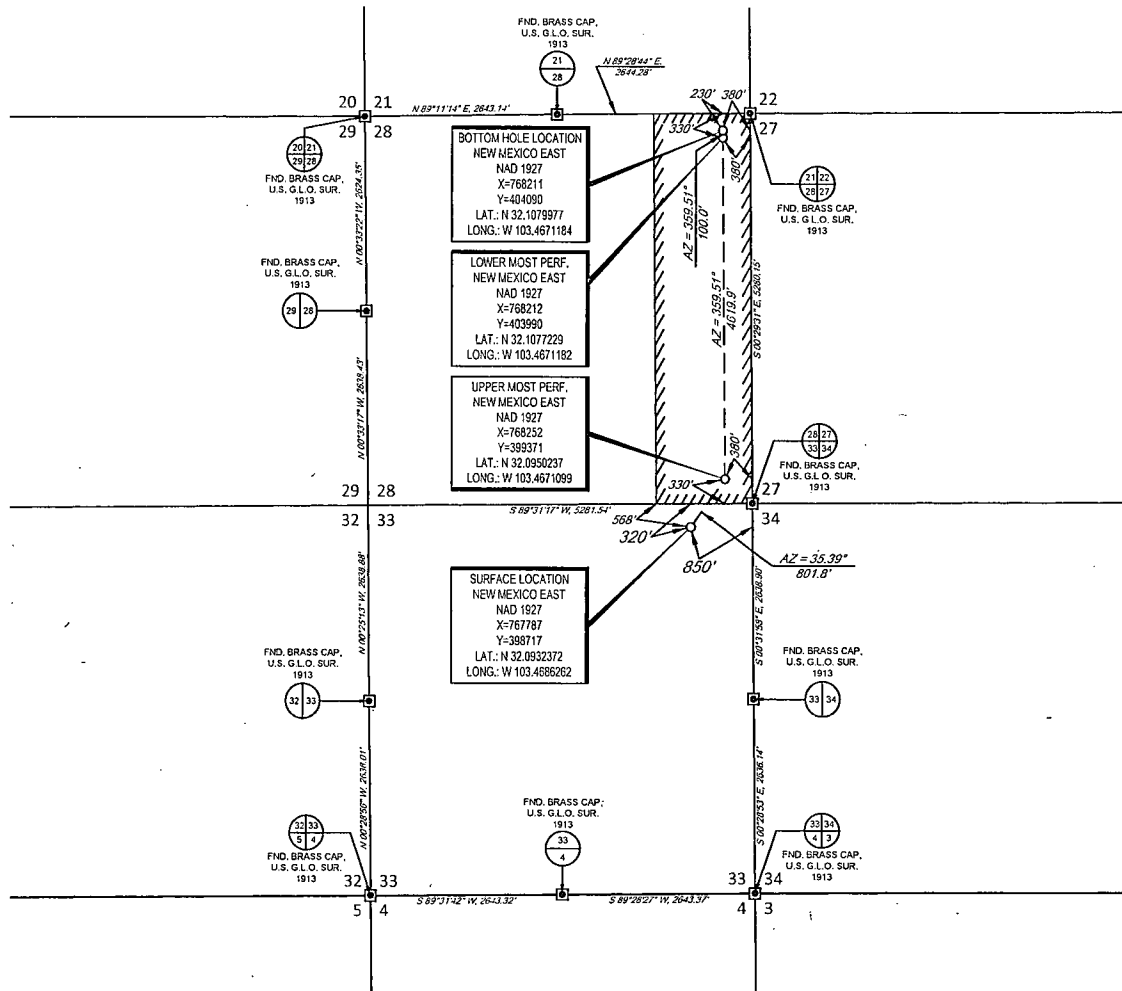
ALL BEARINGS, DISTANCES, AND COORDINATE VALUES CONTAINED HEREON ARE GRID BASED UPON THE NEW MEXICO STATE PLANE COORDINATE SYSTEM, EAST ZONE OF THE NORTH AMERICAN DATUM 1927, U.S. SURVEY FEET.



1400 EVERMAN PARKWAY, Ste. 197 • FT. WORTH, TEXAS 76140  
TELEPHONE: (817) 744-7512 • FAX (817) 744-7548  
2903 NORTH BIG SPRING • MIDLAND, TEXAS 79705  
TELEPHONE: (432) 682-1653 OR (800) 767-1653 • FAX (432) 682-1743  
WWW.TOPOGRAPHIC.COM

**EXHIBIT 2A**

SECTION 33, TOWNSHIP 25-S, RANGE 34-E, N.M.P.M.  
LEA COUNTY, NEW MEXICO



LEASE NAME & WELL NO.: BULLDAWG 33 FED #601H

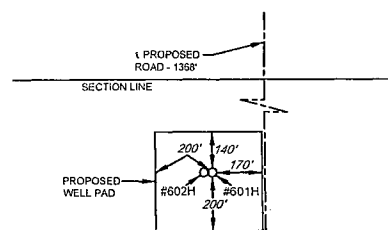
SECTION 33 TWP 25-S RGE 34-E SURVEY N.M.P.M.  
COUNTY LEA STATE NM  
DESCRIPTION 320' FNL & 850' FEL

**DISTANCE & DIRECTION**  
FROM INT. OF NM-18 N & NM-128, GO WEST ON NM-128 W+14.1 MILES.  
THENCE SOUTH (LEFT) ON BATTLE AXE RD. +9.4 MILES, THENCE EAST  
(LEFT) ON LEASE RD. +1.4 MILES TO A POINT +1368 FEET NORTH OF  
THE LOCATION.

ALL BEARINGS, DISTANCES, AND COORDINATE VALUES CONTAINED HEREON ARE GRID  
BASED UPON THE NEW MEXICO STATE PLANE COORDINATE SYSTEM, EAST ZONE OF THE  
NORTH AMERICAN DATUM 1927, U.S. SURVEY FEET

THIS EASEMENT/SERVITUDE LOCATION SHOWN HEREON HAS BEEN SURVEYED ON THE GROUND  
UNDER MY SUPERVISION AND PREPARED ACCORDING TO THE EVIDENCE FOUND AT THE TIME OF  
SURVEY, AND DATA PROVIDED BY EOG RESOURCES, INC. THIS CERTIFICATION IS MADE AND LIMITED  
TO THOSE PERSONS OR ENTITIES SHOWN ON THE FACE OF THIS PLAT AND IS NON-TRANSFERABLE.  
THIS SURVEY IS CERTIFIED FOR THIS TRANSACTION ONLY.

DETAIL VIEW  
SCALE: 1" = 500'



**MICHAEL B. BROWN**  
NEW MEXICO  
18329  
PROFESSIONAL SURVEYOR

Michael Blake Brown, P.S. No. 18329  
OCTOBER 23, 2014

**TOPOGRAPHIC**  
LOYALTY INNOVATION LEGACY

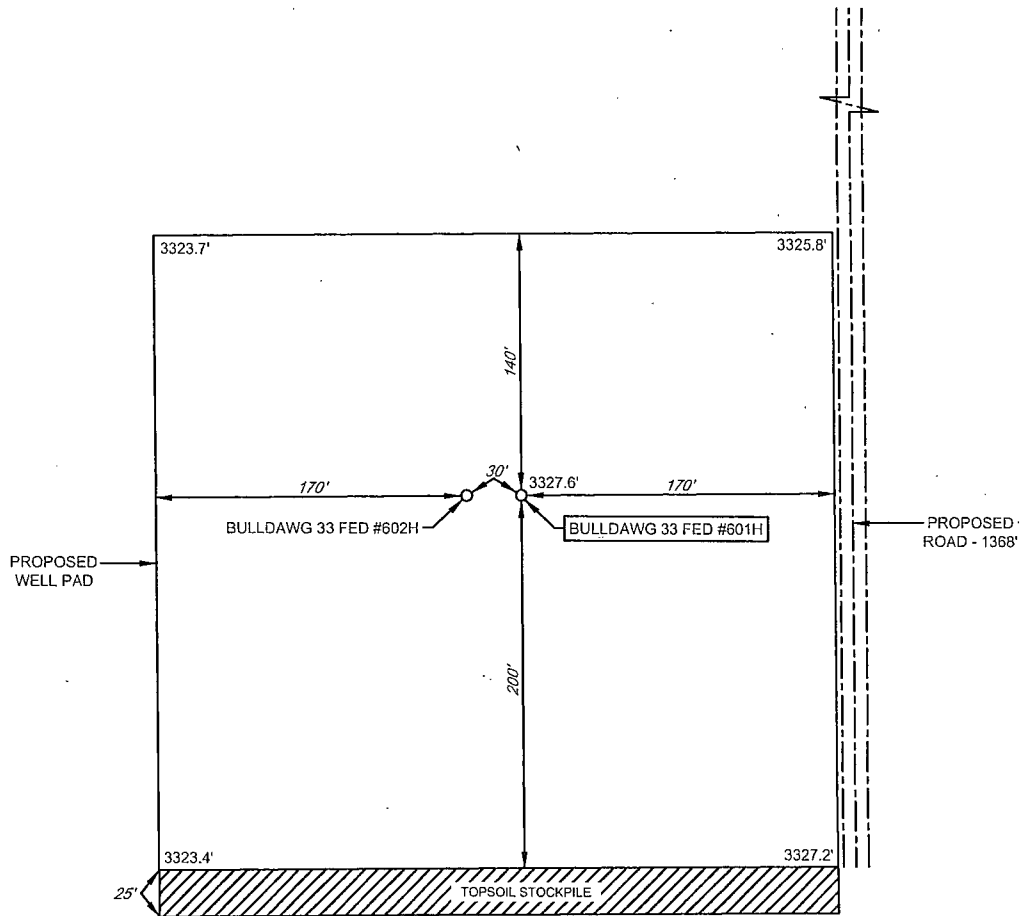
1400 EVERMAN PARKWAY, Ste. 197 • FT. WORTH, TEXAS 76140  
TELEPHONE: (817) 744-7512 • FAX: (817) 744-7519  
2903 NORTH BIG SPRING • MIDLAND, TEXAS 79705  
TELEPHONE: (432) 682-1653 OR (800) 767-1653 • FAX: (432) 682-1743  
WWW.TOPOGRAPHIC.COM



## EXHIBIT 2B

SECTION 33, TOWNSHIP 25-S, RANGE 34-E, N.M.P.M.  
LEA COUNTY, NEW MEXICO

DETAIL VIEW  
SCALE: 1" = 100'



LEASE NAME & WELL NO.: BULLDAWG 33 FED #601H  
#601H LATITUDE N 32.0932372 #601H LONGITUDE W 103.4686262

### LEGEND

----- PROPOSED ROAD  
===== SECTION LINE



SCALE: 1" = 100'  
0' 50' 100'

ALL BEARINGS, DISTANCES, AND COORDINATE VALUES CONTAINED HEREON ARE GRID  
BASED UPON THE NEW MEXICO STATE PLANE COORDINATE SYSTEM, EAST ZONE OF THE  
NORTH AMERICAN DATUM 1927, U.S. SURVEY FEET

THIS PROPOSED PAD SITE LOCATION SHOWN HEREON HAS BEEN SURVEYED ON THE GROUND UNDER  
MY SUPERVISION AND PREPARED ACCORDING TO THE EVIDENCE FOUND AT THE TIME OF SURVEY,  
AND DATA PROVIDED BY EOG RESOURCES, INC. THIS CERTIFICATION IS MADE AND LIMITED TO THOSE  
PERSONS OR ENTITIES SHOWN ON THE FACE OF THIS PLAT AND IS NON-TRANSFERABLE. THIS  
SURVEY IS CERTIFIED FOR THIS TRANSACTION ONLY.



1400 EVERMAN PARKWAY, Ste. 197 • FT. WORTH, TEXAS 76140  
TELEPHONE: (817) 744-7512 • FAX (817) 744-7548  
2903 NORTH BIG SPRING • MIDLAND, TEXAS 79705  
TELEPHONE: (432) 682-1653 OR (800) 767-1653 • FAX (432) 682-1743  
WWW.TOPOGRAPHIC.COM

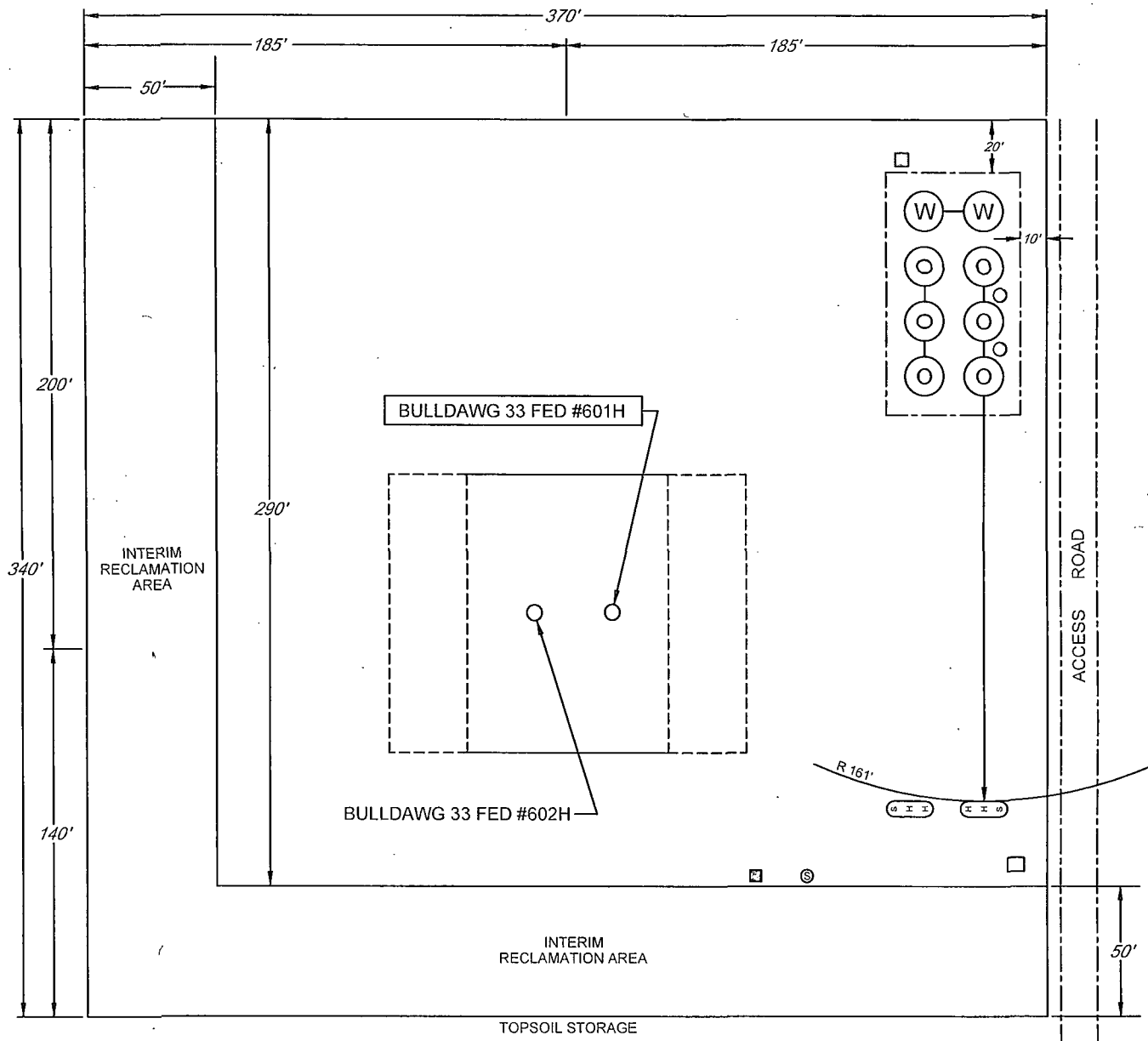
ORIGINAL DOCUMENT SIZE: 8.5" X 11"

# EXHIBIT 2C

## RECLAMATION AND FACILITY DIAGRAM - PRODUCTION FACILITIES DIAGRAM

SECTION 33, TOWNSHIP 25-S, RANGE 34-E, N.M.P.M.  
LEA COUNTY, NEW MEXICO

DETAIL VIEW  
SCALE: 1" = 60'



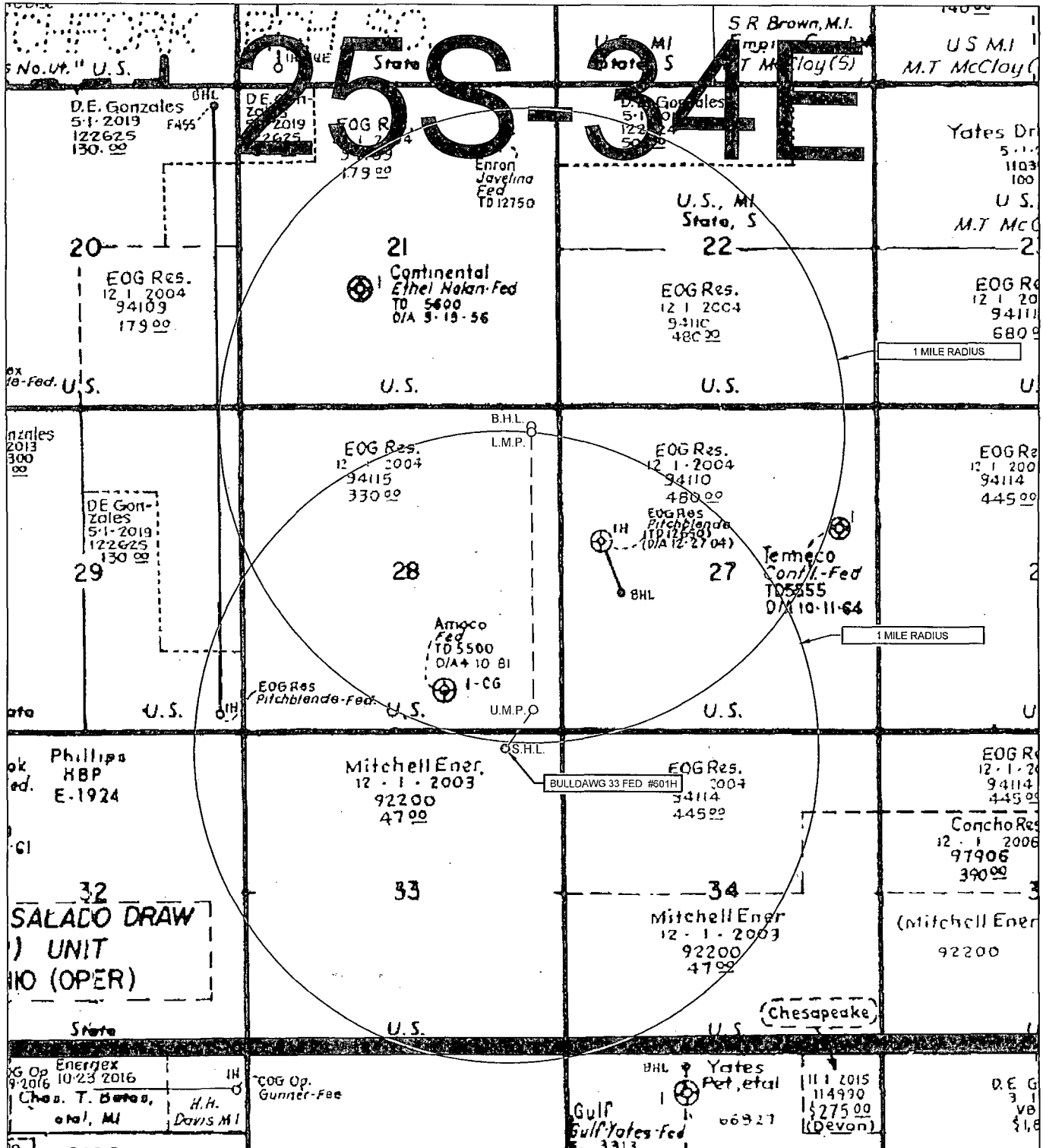
LEASE NAME & WELL NO.: BULLDAWG 33 FED #601H  
#601H LATITUDE N 32.0932372 #601H LONGITUDE W 103.4686262

### LEGEND

	500 BBL OIL TANK		FLARE SEPARATOR
	500 BBL WATER TANK		VRU
	36 x 15 HEATER/SEPARATOR		48 X 25 VRT
			FP FLARE
			OP FLARE

# EXHIBIT 3

SECTION 33, TOWNSHIP 25-S, RANGE 34-E, N.M.P.M.  
LEA COUNTY, NEW MEXICO



LEASE NAME & WELL NO.: \_\_\_\_\_ BULLDAWG 33 FED #601H

SCALE: NTS #601H LATITUDE N 32.0932372 #601H LONGITUDE W 103.4686262

ALL BEARINGS, DISTANCES, AND COORDINATE VALUES CONTAINED HEREON ARE GRID  
BASED UPON THE NEW MEXICO STATE PLANE COORDINATE SYSTEM, EAST ZONE OF THE  
NORTH AMERICAN DATUM 1927, U.S. SURVEY FEET

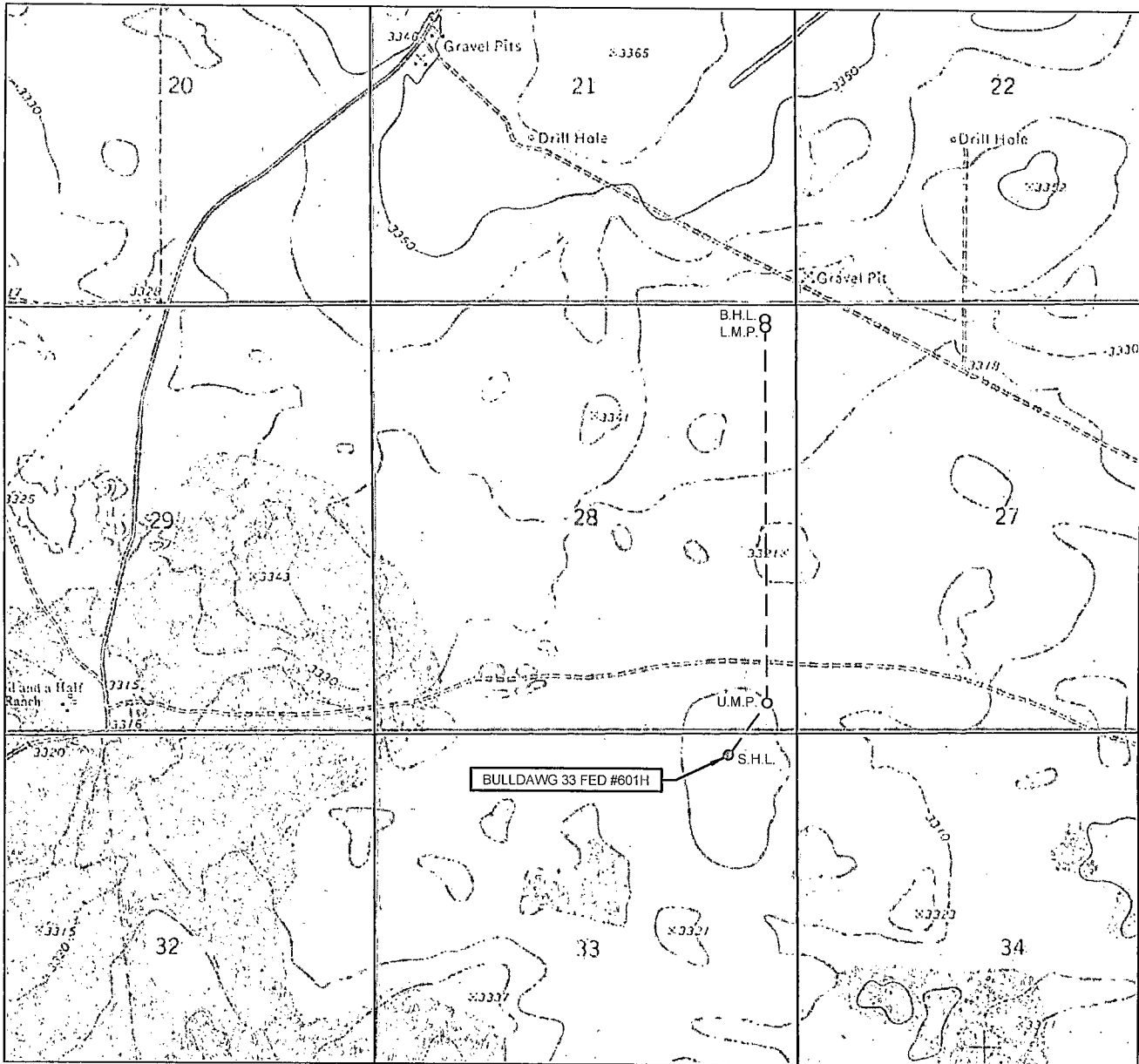
THIS EASEMENT/SERVITUDE LOCATION SHOWN HEREON HAS BEEN SURVEYED ON THE GROUND  
UNDER MY SUPERVISION AND PREPARED ACCORDING TO THE EVIDENCE FOUND AT THE TIME OF  
SURVEY, AND DATA PROVIDED BY EOG RESOURCES, INC. THIS CERTIFICATION IS MADE AND LIMITED  
TO THOSE PERSONS OR ENTITIES SHOWN ON THE FACE OF THIS PLAT AND IS NON-TRANSFERABLE.  
THIS SURVEY IS CERTIFIED FOR THIS TRANSACTION ONLY.



**TOPOGRAPHIC**  
LOYALTY INNOVATION LEGACY

1400 EVERMAN PARKWAY, Ste. 197 • FT. WORTH, TEXAS 76140  
TELEPHONE: (817) 744-7512 • FAX (817) 744-7548  
2903 NORTH BIG SPRING • MIDLAND, TEXAS 79705  
TELEPHONE: (432) 682-1653 OR (800) 767-1653 • FAX (432) 682-1743  
WWW.TOPOGRAPHIC.COM

# LOCATION & ELEVATION VERIFICATION MAP



LEASE NAME & WELL NO.: BULLDAWG 33 FED #601H

SECTION 33 TWP 25-S RGE 34-E SURVEY N.M.P.M.  
 COUNTY LEA STATE NM ELEVATION 3328'  
 DESCRIPTION 320' FNL & 850' FEL

LATITUDE N 32.0932372 LONGITUDE W 103.4686262



SCALE: 1" = 2000'  
 0' 1000' 2000'

THIS EASEMENT/SERVITUDE LOCATION SHOWN HEREON HAS BEEN SURVEYED ON THE GROUND UNDER MY SUPERVISION AND PREPARED ACCORDING TO THE EVIDENCE FOUND AT THE TIME OF SURVEY, AND DATA PROVIDED BY EOG RESOURCES, INC. THIS CERTIFICATION IS MADE AND LIMITED TO THOSE PERSONS OR ENTITIES SHOWN ON THE FACE OF THIS PLAT AND IS NON-TRANSFERABLE. THIS SURVEY IS CERTIFIED FOR THIS TRANSACTION ONLY.

ALL BEARINGS, DISTANCES, AND COORDINATE VALUES CONTAINED HEREON ARE GRID BASED UPON THE NEW MEXICO STATE PLANE COORDINATE SYSTEM, EAST ZONE OF THE NORTH AMERICAN DATUM 1927, U.S. SURVEY FEET.



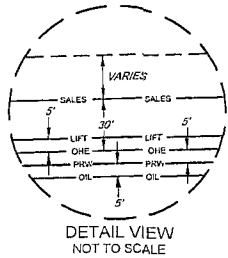
1400 EVERMAN PARKWAY, Ste. 197 • FT. WORTH, TEXAS 76140  
 TELEPHONE: (817) 744-7512 • FAX (817) 744-7548  
 2903 NORTH BIG SPRING • MIDLAND, TEXAS 79705  
 TELEPHONE: (432) 682-1653 OR (800) 767-1653 • FAX (432) 682-1743  
 WWW.TOPOGRAPHIC.COM

# EXHIBIT 5

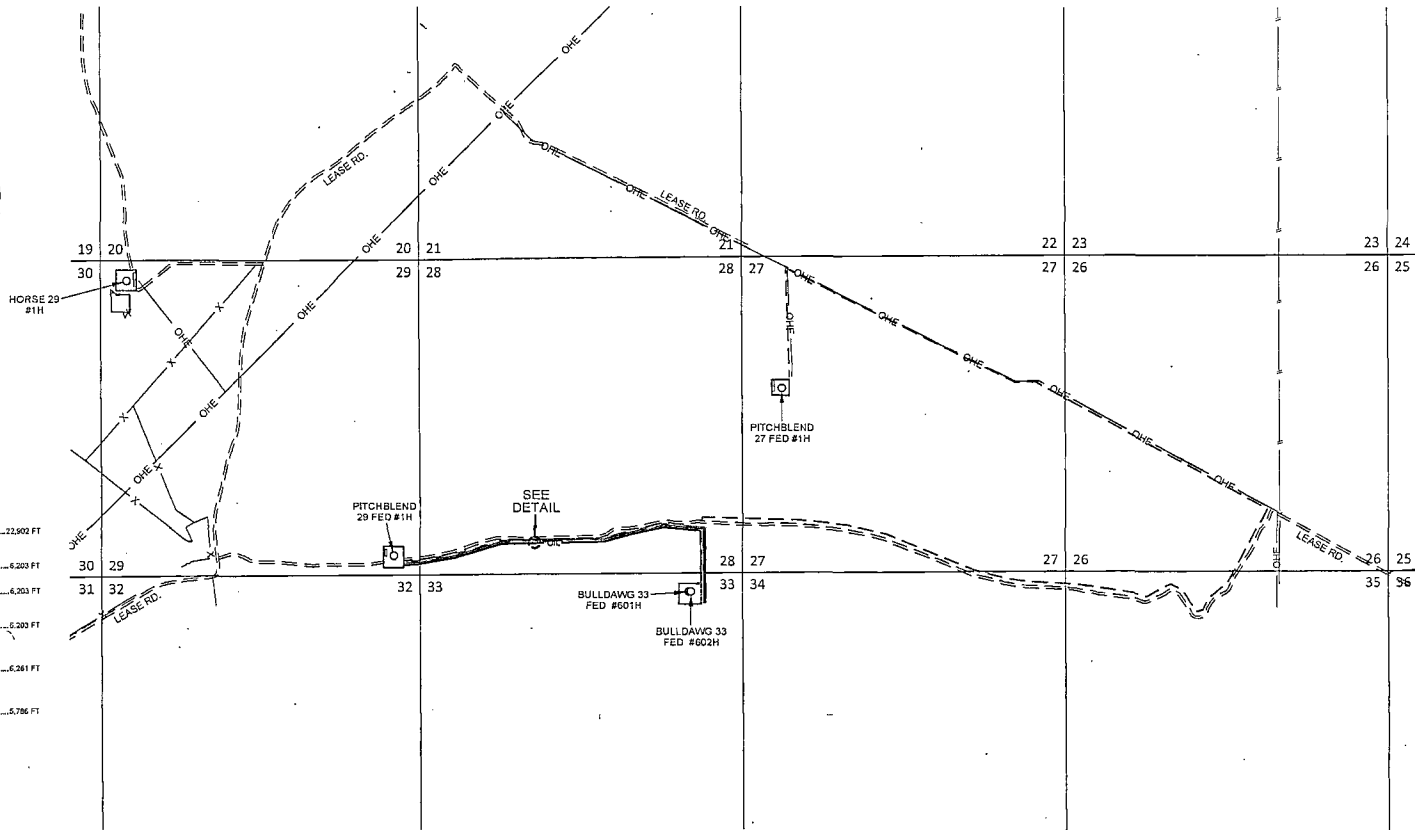
SECTION 26, 27, 28, 29, 33, 34, 35, TOWNSHIP 25 SOUTH, RANGE 34 EAST, N.M.P.M.  
LEA COUNTY, NEW MEXICO

## BULLDAWG 33 FED #601H-#602H INFRASTRUCTURE MAP

SCALE: 1" = 2000'  
0' 1000' 2000'



---	PROPOSED ROAD	72,903 FT
---	1-4" POLY GAS LIFT LINE	
---	TOTAL FOOTAGES TO PAD SITE	6,203 FT
---	WORKING PRESSURE 75-125 PSI	
---	ELECTRIC LINE	
---	TOTAL FOOTAGES TO PAD SITE	6,203 FT
---	2-4" POLY GAS LINES	
---	TOTAL FOOTAGES TO PAD SITE	6,203 FT
---	WORKING PRESSURE 75-125 PSI	
---	4" GAS SALES LINE	
---	TOTAL FOOTAGES TO PAD SITE	6,241 FT
---	WORKING PRESSURE 75-125 PSI	
---	OIL SALES LINE	
---	TOTAL FOOTAGES TO PAD SITE	6,786 FT
---	WORKING PRESSURE 75-125 PSI	



REVISION:	
INT	DATE

eog resources, inc.