

District I
1625 N. French Dr., Hobbs, NM 88240
Phone: (575) 393-6161 Fax: (575) 393-0720
District II
811 S. First St., Artesia, NM 88210
Phone: (575) 748-1283 Fax: (575) 748-9720
District III
1000 Rio Brazos Road, Aztec, NM 87410
Phone: (505) 334-6178 Fax: (505) 334-6170
District IV
1220 S. St. Francis Dr., Santa Fe, NM 87505
Phone: (505) 476-3460 Fax: (505) 476-3462

State of New Mexico
Energy, Minerals & Natural Resources Department
OIL CONSERVATION DIVISION
1220 South St. Francis Dr.
Santa Fe, NM 87505

HOBBS OCD

Form C-102

Revised August 1, 2011

Submit one copy to appropriate
District Office

RECEIVED

☐ AMENDED REPORT

WELL LOCATION AND ACREAGE DEDICATION PLAT

¹ API Number 30-025-42684	² Pool Code 50461	³ Pool Name QUALL RIDGE, B5, SOUTH
⁴ Property Code 313633	⁵ Property Name NORTH LEA 3 FED COM	⁶ Well Number 4H
⁷ OGRID No. 18917	⁸ Operator Name READ & STEVENS, INC.	⁹ Elevation 3660.5

¹⁰ Surface Location

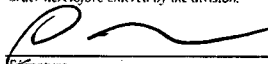
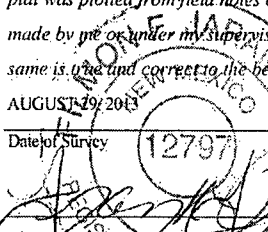
UL or lot no.	Section	Township	Range	Lot Idn	Feet from the	North/South line	Feet from the	East/West line	County
4	3	20 S	34 E		200	NORTH	970	WEST	LEA

¹¹ Bottom Hole Location If Different From Surface

UL or lot no.	Section	Township	Range	Lot Idn	Feet from the	North/South line	Feet from the	East/West line	County
M	3	20 S	34E		330	SOUTH	970	WEST	LEA

¹² Dedicated Acres 160.96	¹³ Joint or Infill	¹⁴ Consolidation Code	¹⁵ Order No.
--	-------------------------------	----------------------------------	-------------------------

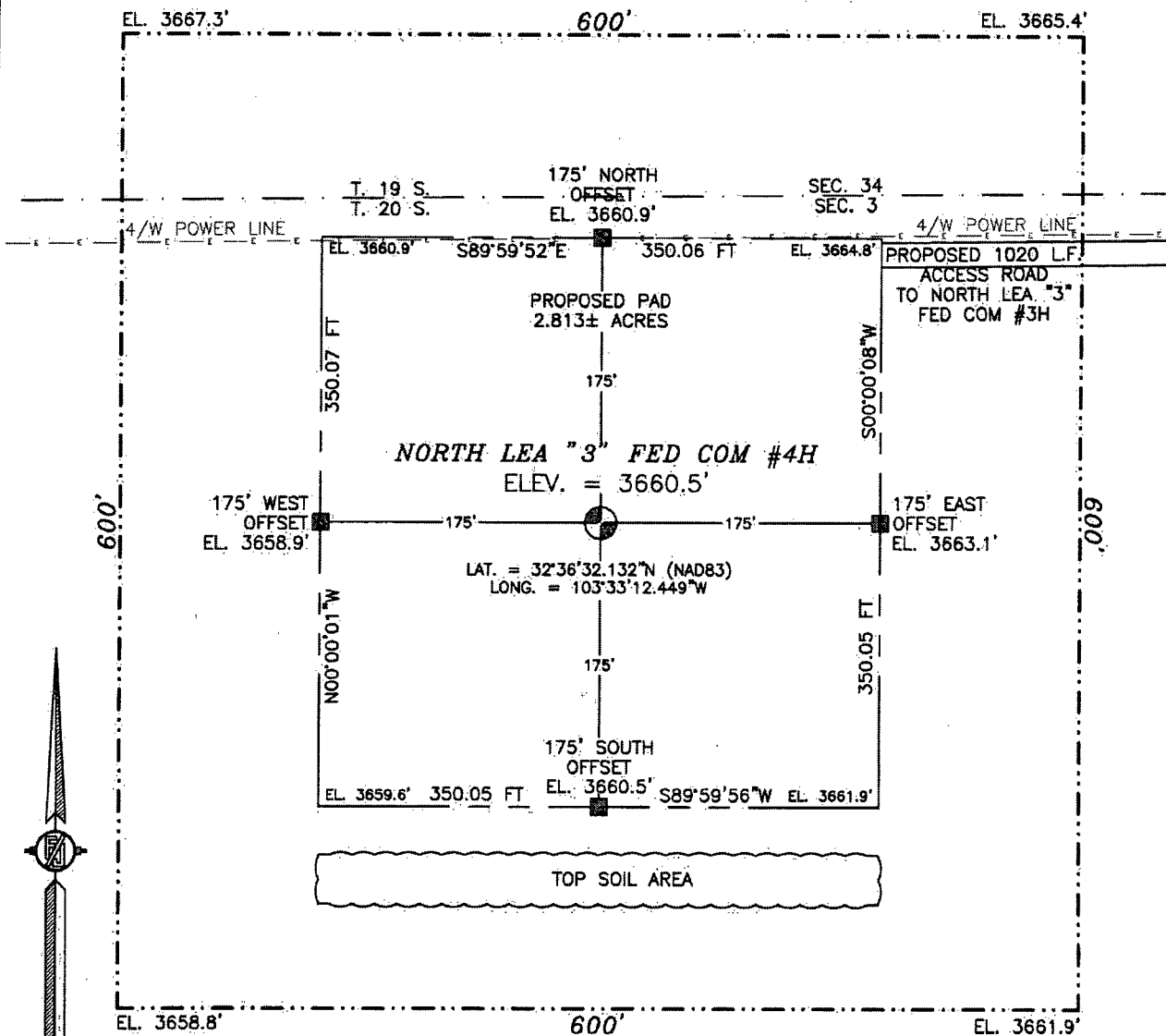
No allowable will be assigned to this completion until all interests have been consolidated or a non-standard unit has been approved by the division.

<p>N89°29'50"E 2642.95 FT</p> <p>970'</p> <p>200'</p> <p>SURFACE LOCATION</p> <p>NW CORNER SEC. 3 LAT. = 32°36'34.097"N LONG. = 103°33'23.785"W 40.29 AC. L4 (40.95 AC. BLM)</p> <p>NORTH LEA "3" FED COM #4H ELEV. = 3660.5' LAT. = 32°36'32.132"N (NAD83) LONG. = 103°33'12.449"W</p> <p>W/4 CORNER SEC. 3 LAT. = 32°36'07.810"N LONG. = 103°33'23.804"W</p> <p>NOTE: LATITUDE AND LONGITUDE COORDINATES ARE SHOWN USING THE NORTH AMERICAN DATUM OF 1983 (NAD83) IN DEGREES MINUTES DECIMAL SECONDS FORMAT. BASIS OF BEARING IS NEW MEXICO STATE PLANE EAST (NAD83) COORDINATES MODIFIED TO SURFACE.</p> <p>SW CORNER SEC. 3 LAT. = 32°35'41.520"N LONG. = 103°33'23.804"W</p> <p>BOTTOM OF HOLE LAT. = 32°35'44.799"N LONG. = 103°33'12.492"W</p> <p>S/4 CORNER SEC. 3 LAT. = 32°35'41.635"N LONG. = 103°32'53.040"W</p> <p>SE CORNER SEC. 3 LAT. = 32°35'41.724"N LONG. = 103°32'22.156"W</p> <p>S89°19'33"W 2632.55 FT</p> <p>S89°22'54"W 2642.75 FT</p>		<p>¹⁷ OPERATOR CERTIFICATION</p> <p>I hereby certify that the information contained herein is true and complete to the best of my knowledge and belief, and that this organization either owns a working interest or undivided mineral interest in the land including the proposed bottom hole location or has a right to drill this well at this location pursuant to a contract with an owner of such a mineral or working interest, or to a voluntary pooling agreement or a compulsory pooling order heretofore entered by the division.</p> <p> 05/30/2014 Signature Date</p> <p>Steve Morris Printed Name</p> <p>Steve.Morris@mojocorp.ca E-mail Address</p> <p>¹⁸ SURVEYOR CERTIFICATION</p> <p>I hereby certify that the well location shown on this plat was plotted from field notes of actual surveys made by me or under my supervision, and that the same is true and correct to the best of my belief.</p> <p>AUGUST 29, 2013 Date of Survey</p> <p> 12797 Signature and Seal of Professional Surveyor</p> <p>Certificate Number: 12797 SURVEY NO. 1893</p>
--	--	---

JUL 13 2015

SECTION 3, TOWNSHIP 20 SOUTH, RANGE 34 EAST, N.M.P.M.
LEA COUNTY, STATE OF NEW MEXICO

NOTE: LATITUDE AND LONGITUDE COORDINATES ARE SHOWN USING THE NORTH AMERICAN DATUM OF 1983 (NAD83) IN DEGREES, MINUTES AND DECIMAL SECONDS FORMAT. BASIS OF BEARING IS NEW MEXICO STATE PLANE EAST (NAD83) COORDINATES MODIFIED TO SURFACE.



010 50 100 200

SCALE 1" = 100'

DIRECTIONS TO LOCATION

FROM MILE MARKER #79 ON HWY 62-180 GO EAST ON HWY 62-180 APPROX. 0.7 MILES TO A LEASE ROAD ON RIGHT (SOUTH) TURN SOUTH ON LEASE ROAD GO APPROX. 0.7 MILES ROAD TURNS RIGHT (WEST) GO WEST APPROX. 0.2 MILES TO LEASE ROAD ON LEFT (SOUTH) TURN SOUTH GO APPROX. 0.1 MILES TO A ROAD LATH ON RIGHT (WEST) FOLLOW ROAD LATHS APPROX. 0.2 MILES TO THE STAKED NORTH LEA "3" FED COM #3H WELL FROM THE STAKED NORTHWEST PAD CORNER FOLLOW LATHS APPROX. 0.2 MILES WEST TO THE NORTHEAST PAD CORNER FOR THIS LOCATION

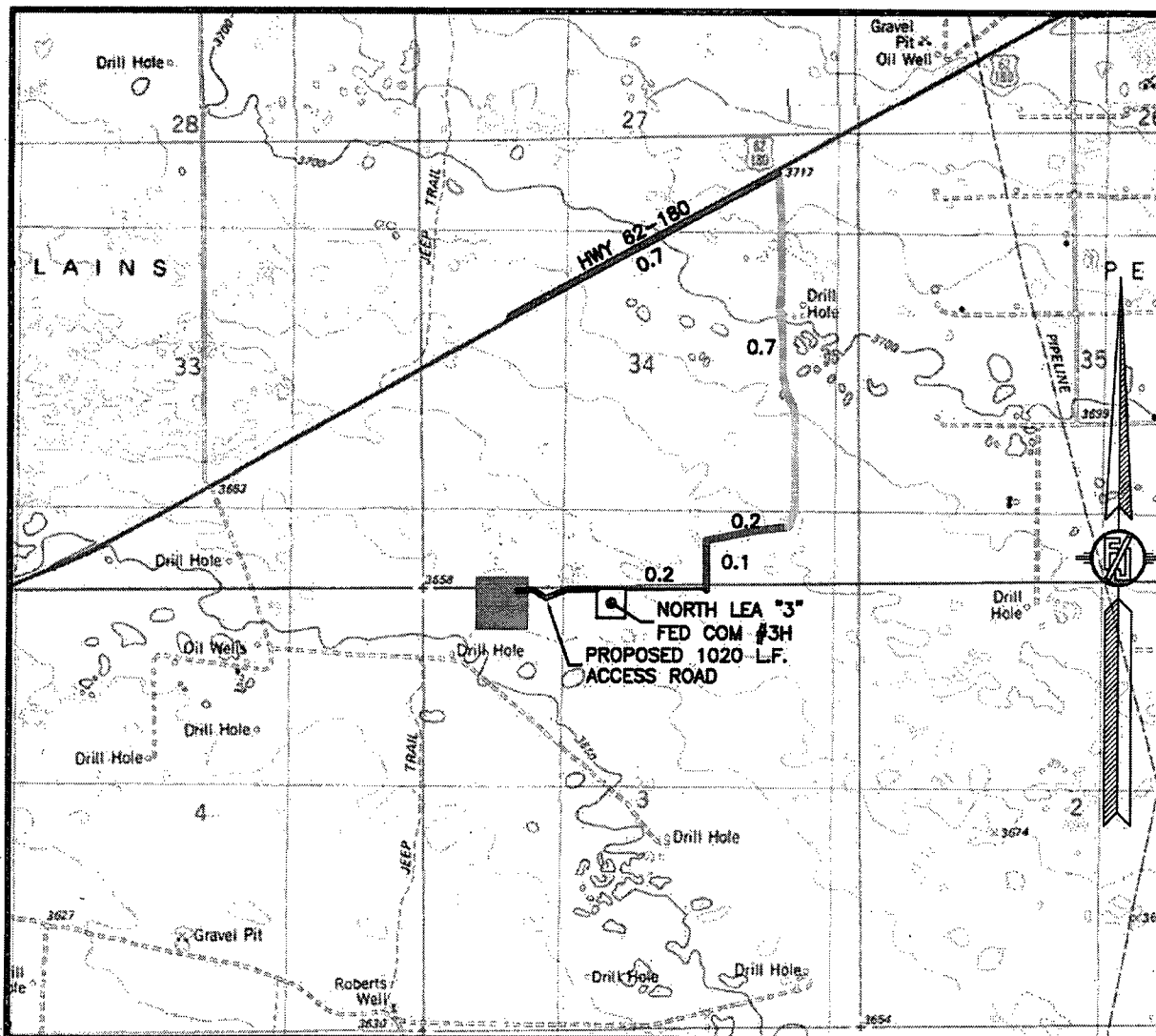
READ & STEVENS, INC.
NORTH LEA "3" FED COM #4H
LOCATED 200 FT. FROM THE NORTH LINE
AND 970 FT. FROM THE WEST LINE OF
SECTION 3, TOWNSHIP 20 SOUTH,
RANGE 34 EAST, N.M.P.M.
LEA COUNTY, STATE OF NEW MEXICO

AUGUST 29, 2013

SURVEY NO. 1893

MADRON SURVEYING, INC. 301 SOUTH CAVAL (575) 234-3341 CARLSBAD, NEW MEXICO

SECTION 3, TOWNSHIP 20 SOUTH, RANGE 34 EAST, N.M.P.M.
LEA COUNTY, STATE OF NEW MEXICO
LOCATION VERIFICATION MAP



USGS QUAD MAP:
LEA

DISTANCES IN MILES

NOT TO SCALE

DIRECTIONS TO LOCATION

FROM MILE MARKER #79 ON HWY 82-180 GO EAST ON HWY 82-180 APPROX. 0.7 MILES TO A LEASE ROAD ON RIGHT (SOUTH) TURN SOUTH ON LEASE ROAD GO APPROX. 0.7 MILES ROAD TURNS RIGHT (WEST) GO WEST APPROX. 0.2 MILES TO LEASE ROAD ON LEFT (SOUTH) TURN SOUTH GO APPROX 0.1 MILES TO A ROAD LATH ON RIGHT (WEST) FOLLOW ROAD LATHS WEST APPROX. 0.2 MILES TO THE STAKED NORTH LEA "3" FED COM #3H WELL. FROM THE STAKED NORTHWEST PAD CORNER FOLLOW LATHS APPROX. 0.2 MILES WEST TO THE NORTHEAST PAD CORNER FOR THIS LOCATION

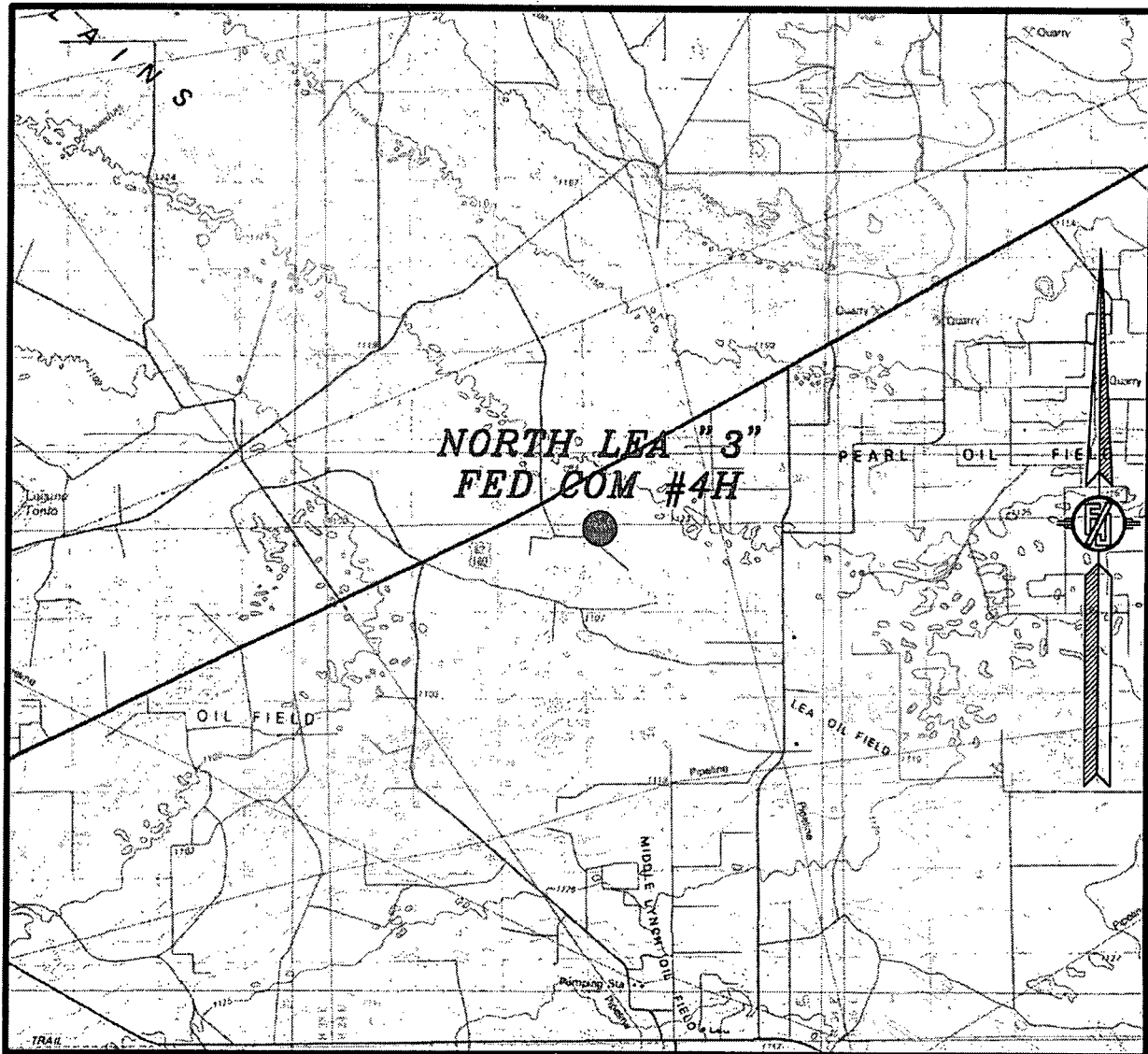
READ & STEVENS, INC.
NORTH LEA "3" FED COM #4H
LOCATED 200 FT. FROM THE NORTH LINE
AND 970 FT. FROM THE WEST LINE OF
SECTION 3, TOWNSHIP 20 SOUTH,
RANGE 34 EAST, N.M.P.M.
LEA COUNTY, STATE OF NEW MEXICO

AUGUST 29, 2013

MADRON SURVEYING, INC. 301 SOUTH CANAL (575) 234-3341

SURVEY NO. 1893
CARLSBAD, NEW MEXICO

SECTION 3, TOWNSHIP 20 SOUTH, RANGE 34 EAST, N.M.P.M.
LEA COUNTY, STATE OF NEW MEXICO
VICINITY MAP



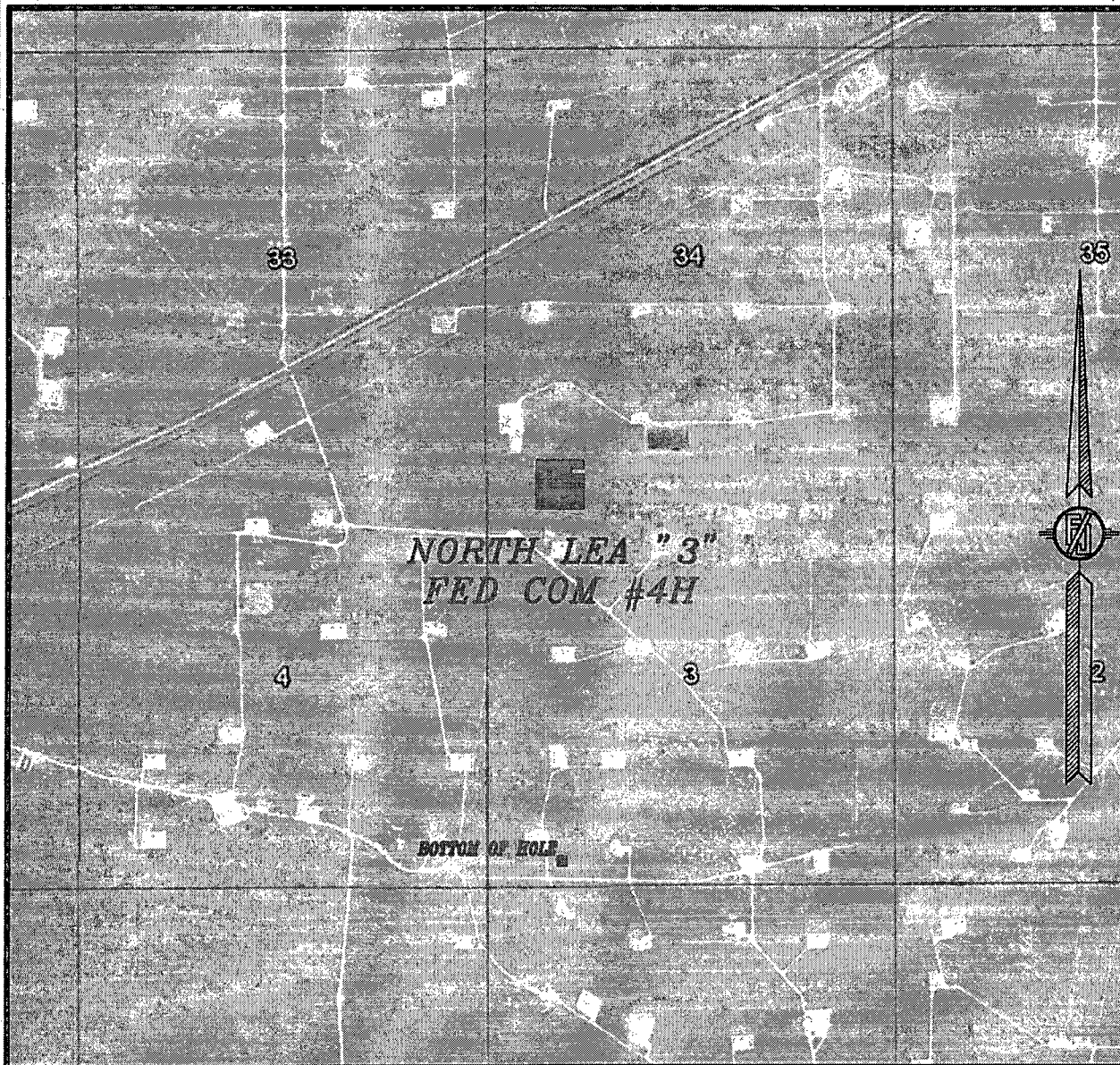
NOT TO SCALE

READ & STEVENS, INC.
NORTH LEA "3" FED COM #4H
LOCATED 200 FT. FROM THE NORTH LINE
AND 970 FT. FROM THE WEST LINE OF
SECTION 3, TOWNSHIP 20 SOUTH,
RANGE 34 EAST, N.M.P.M.
LEA COUNTY, STATE OF NEW MEXICO

AUGUST 29, 2013

MADRON SURVEYING, INC. 301 SOUTH CANAL (575) 234-3341 CARLSBAD, NEW MEXICO SURVEY NO. 1893

SECTION 3, TOWNSHIP 20 SOUTH, RANGE 34 EAST, N.M.P.M.
LEA COUNTY, STATE OF NEW MEXICO
AERIAL PHOTO



NOT TO SCALE
AERIAL PHOTO:
GOOGLE EARTH
MARCH 2012

READ & STEVENS, INC.
NORTH LEA "3" FED COM #4H
LOCATED 200 FT. FROM THE NORTH LINE
AND 970 FT. FROM THE WEST LINE OF
SECTION 3, TOWNSHIP 20 SOUTH,
RANGE 34 EAST, N.M.P.M.
LEA COUNTY, STATE OF NEW MEXICO

AUGUST 29, 2013

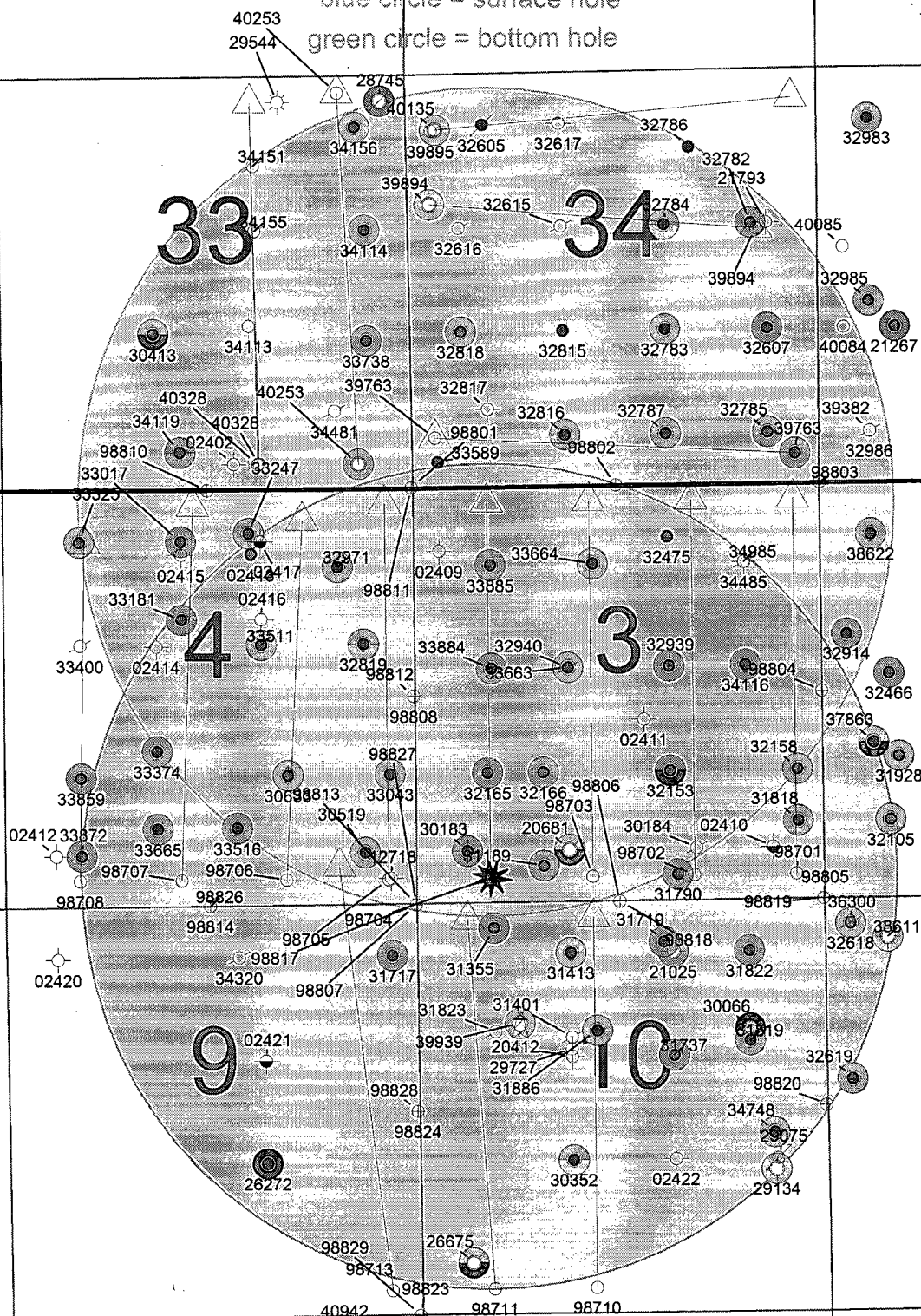
SURVEY NO. 1893

MADRON SURVEYING, INC. 301 SOUTH CANAL (575) 234-3341 CARLSBAD, NEW MEXICO

1-MILE RADIUS MAP

blue circle = surface hole

green circle = bottom hole



North Lea 3 Fed Com #4H

state code = 30
county code = 025

20S 34E



New Mexico Office of the State Engineer **Water Column/Average Depth to Water**

No records found.

Basin/County Search:

Basin: Lea County

County: Lea

PLSS Search:

Section(s): 3

Township: 20S

Range: 34E

350

