

Submit 1 Copy To Appropriate District Office
District I - (575) 393-6161
1625 N. French Dr., Hobbs, NM 88240
District II - (575) 748-1283
811 S. First St., Artesia, NM 88210
District III - (505) 334-6178
1000 Rio Brazos Rd., Aztec, NM 87410
District IV - (505) 476-3460
1220 S. St. Francis Dr., Santa Fe, NM 87505

State of New Mexico
Energy, Minerals and Natural Resources

Form C-103
Revised July 18, 2013

OIL CONSERVATION DIVISION
1220 South St. Francis Dr.
Santa Fe, NM 87505

WELL API NO. 30-025-39662
5. Indicate Type of Lease STATE <input checked="" type="checkbox"/> FEE <input type="checkbox"/>
6. State Oil & Gas Lease No.
7. Lease Name or Unit Agreement Name NORTH VACUUM ABO NORTH UNIT
8. Well Number #12
9. OGRID Number 277558
10. Pool name or Wildcat North Vacuum Abo (61760)

SUNDRY NOTICES AND REPORTS ON WELLS
(DO NOT USE THIS FORM FOR PROPOSALS TO DRILL OR TO DEEPEN OR PLUG BACK TO A DIFFERENT RESERVOIR. USE "APPLICATION FOR PERMIT" (FORM C-101) FOR PROPOSALS.)

1. Type of Well: Oil Well ☒ Gas Well ☐ Other

2. Name of Operator
LIME ROCK RESOURCES II-A, L.P.

3. Address of Operator
c/o Mike Pippin LLC, 3104 N. Sullivan, Farmington, NM 87401

4. Well Location

Unit Letter F : 2490 feet from the North line and 1481 feet from the West line
Section 1 Township 17-S Range 34-E NMPM Lea County

11. Elevation (Show whether DR, RKB, RT, GR, etc.)
4042' GL

12. Check Appropriate Box to Indicate Nature of Notice, Report or Other Data

NOTICE OF INTENTION TO:

PERFORM REMEDIAL WORK ☐ PLUG AND ABANDON ☒
TEMPORARILY ABANDON ☐ CHANGE PLANS ☐
PULL OR ALTER CASING ☐ MULTIPLE COMPL ☐
DOWNHOLE COMMINGLE ☐
CLOSED-LOOP SYSTEM ☒
OTHER: P&A ☒

REM
CON
CAS

E-PERMITTING <SWD INJECTION>
CONVERSION RBDMS
RETURN TO TA
CSNG CHG LOC
INT TO RAEM P&A NR P&A R

OTHL...

13. Describe proposed or completed operations. (Clearly state all pertinent details, and give pertinent dates, including estimated date of starting any proposed work).
SEE RULE 19.15.7.14 NMAC. For Multiple Completions: Attach wellbore diagram of proposed completion or recompletion.

LIME ROCK would like to P&A this North Vacuum Abo well as follows: MIRUSU. TIH w/2-3/8" rental tbg & tag cmt. Load csg w/water & circ clean. Pressure test csg to 500 psi. If csg does not test, spot or tag subsequent plugs as appropriate. Circ hole w/P&A mud (25 sx gel/100 bbls water). Plug #1, (6074'-6174') Top Glorieta @ 6124'. Perf 3 SQ holes @ 6174'. Set 5-1/2" PKR @ 5600' & establish rate into SQ holes w/water. Mix 40 sx cmt & SQ 29 sx outside 5-1/2" csg & leave 11 sx inside csg. Reverse out & TOH w/tbg & PKR. WOC. Tag cmt. Plug #2 (4550'-4650'), 8-58" shoe @ 4600'. Perf 3 SQ holes @ 4650'. Set 5-1/2" PKR @ 4200' & establish rate into SQ holes w/water. Mix 40 sx cmt & SQ 29 sx outside 5-1/2" csg & leave 11 sx inside csg. Reverse out & TOH w/tbg & PKR. WOC. Tag cmt. Plug #4 (1840'-Surface) 11-3/4" shoe @ 1790'. Perf 3 SQ holes @ 1840'. Establish circ out bradenhead w/water. Pump cmt down 5-1/2" csg & circ cmt out bradenhead, (~276 sx). Cut off csg below surface csg flange. Top off csgs w/cmt. Install P&A marker with cmt to comply with government specs. RD move off location, cut off anchors and restore location.

Spud Date: 7/7/10

Drilling Rig Release Date: 7/24/10

I hereby certify that the information above is true and complete to the best of my knowledge and belief.

SIGNATURE Mike Pippin TITLE Petroleum Engineer - Agent DATE 7/14/15
Type or print name Mike Pippin E-mail address: mike@pippinllc.com PHONE: 505-327-4573

For State Use Only

APPROVED BY: Mary Brown TITLE Dist Supervisor DATE 7/16/2015

Conditions of Approval (if any):

The Oil Conservation Division
MUST BE NOTIFIED 24 Hours
Prior to the beginning of operations

JUL 16 2015

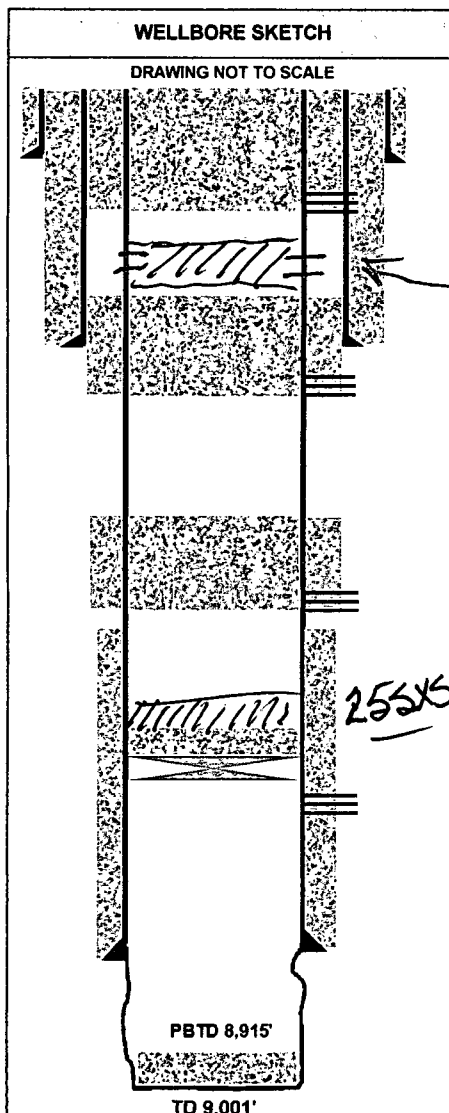
OPERATOR: Lime Rock Resources	LEASE / WELL: NVANU 1-2	SURVEY: Sec 1, T17S, R34E	Property No.
COMPLETION RIG:	COUNTY / STATE: Lea County, NM	SURFACE LOCATION: 2490' FNL & 1481' FWL	FIELD: North Vacuum

DIRECTIONAL DATA		
KOP:	STRAIGHT HOLE	
MAX DEV:	deg @	MD
DEV @ PERFS:	deg @	MD
DEV @ PERFS:	deg @	MD
DEV @ PERFS:	deg @	MD

DRILLING / COMPLETION FLUID	
DRILLING FLUID:	ppg -
DRILLING FLUID:	ppg -
DRILLING FLUID:	ppg -
COMPLETION FLUID:	ppg -
PACKER FLUID:	ppg -

TUBULAR DATA							
Tubulars	Size	Weight	Grade	Thread	Top	MD	SKS
DRIVE PIPE							
CONDUCTOR	16"				0'	50'	
SURFACE	11-3/4"	42#	H-40	LTC	0'	1790'	
INTERMEDIATE	8-5/8"	32#	K-55	LTC	0'	4600'	
PRODUCTION	5-1/2"	17#	N-80	LTC	0'	8995'	
PROD TIEBACK							
PROD LINER							
PROD LINER							
TUBING							
COILED TUBING							

WELLHEAD DATA	
TYPE	
WP	
T	FLANGE:
R	C
E	A
E	P
E	THREAD:
TUBING HANGER:	
BTM FLANGE:	
BPV PROFILE:	
ELEVATIONS:	
RKB-DF:	GROUND ELEVATION
RKB-ELEV:	4042'



EQUIPMENT DESCRIPTION			
TA'd Well			
11-3/4" 42# H-40 csg @ 1790' - circ cmt to surface (14-3/4" hole)			
4			
PLUG#3 (1840'-Surface') Perf 3 holes @ 1840' & pump ~276 sx			
PLUG#3? PERF @ 2750 SQZ			
TOC @ 3500' (calc)			
8-5/8" 32# K-55 csg @ 4600' - circ cmt to surface (11" hole)			
PLUG#2 (4550'-4650') Perf 3 holes @ 4650' & pump 40 sx			
Glorieta @ 6124'			
PLUG#1 (6074'-6174') Perf 3 holes @ 6174' & pump 40 sx			
TOC @ 6314' calc @ 75% Eff.			
Tubb @ 7391'			
Drinkard @ 7687'			
CIBP @ 8615' W/35 SX CMT ON TOP			
Abo @ 8407'			
Abo perfs @ 8682'-90', 8714'-16', 8720'-34', & 8738'-50'			
(4 spf, 160 holes)			
40K gal 15% Ultra gel acid, 40K gal gel H ₂ O			
5-1/2" 17# N-80 csg @ 8995' - cmt w/350 sxs (7-7/8" hole)			
COMMENTS:	Working Interest:	PLUG BACK DEPTH:	
API # 30-025-39662	Net Revenue Interest:	TOTAL WELL DEPTH:	
Property#		PREPARED OR	DATE:
Spud Date:		REVISED BY:	
Completed in		pmp	7/13/2015

PROPOSED P&A

DIRECTIONS TO LOCATION: Directions to well needed.

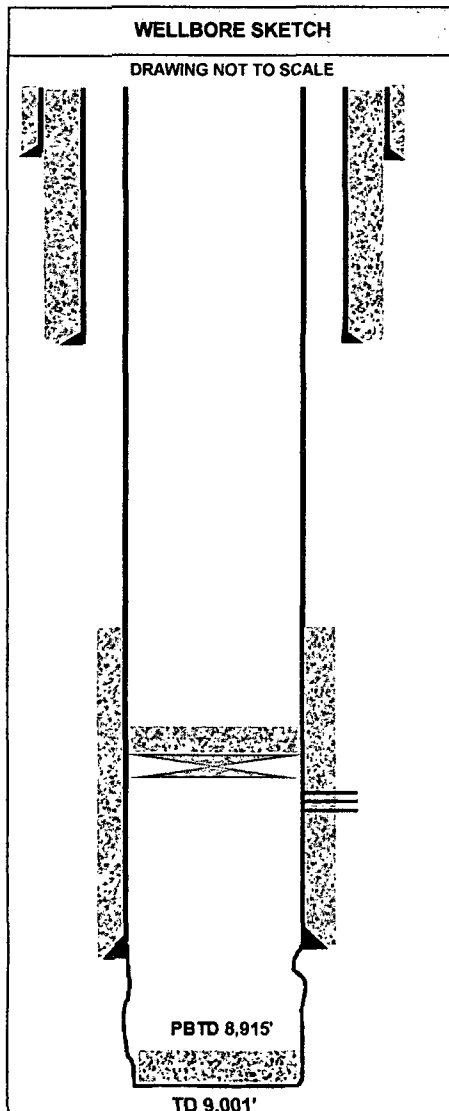
OPERATOR: Lime Rock Resources	LEASE / WELL: NVANU 1-2	SURVEY: Sec 1, T17S, R34E	Property No.
COMPLETION RIG:	COUNTY / STATE: Lea County, NM	SURFACE LOCATION: 2490' FNL & 1481' FWL	FIELD: North Vacuum

DIRECTIONAL DATA		
KOP:	STRAIGHT HOLE	
MAX DEV:	deg @	MD
DEV @ PERFS:	deg @	MD
DEV @ PERFS:	deg @	MD
DEV @ PERFS:	deg @	MD

DRILLING / COMPLETION FLUID	
DRILLING FLUID:	ppg -
DRILLING FLUID:	ppg -
DRILLING FLUID:	ppg -
COMPLETION FLUID:	ppg -
PACKER FLUID:	ppg -

TUBULAR DATA							
Tubulars	Size	Weight	Grade	Thread	Top	MD	SKs
DRIVE PIPE							
CONDUCTOR	16"				0'	50'	
SURFACE	11-3/4"	42#	H-40	LTC	0'	1790'	
INTERMEDIATE	8-5/8"	32#	K-55	LTC	0'	4600'	
PRODUCTION	5-1/2"	17#	N-80	LTC	0'	8995'	
PROD TIEBACK							
PROD LINER							
PROD LINER							
TUBING							
COILED TUBING							

WELLHEAD DATA	
TYPE	
WP	
T	FLANGE:
R	C
E	A
E	P
	THREAD:
TUBING HANGER:	
BTM FLANGE:	
BPV PROFILE:	
ELEVATIONS:	
RKB-DF:	GROUND ELEVATION
RKB-ELEV:	4042'



EQUIPMENT DESCRIPTION			
TA'd Well			
11-3/4" 42# H-40 csg @ 1790' - circ cmt to surface (14-3/4" hole)			
TOC @ 3500' (calc)			
8-5/8" 32# K-55 csg @ 4600' - circ cmt to surface (11" hole)			
Glorieta @ 6124'			
TOC @ 6314' calc @ 75% Eff.			
Tubb @ 7391'			
Drinkard @ 7687'			
CIBP @ 8815' w/35 SX CMT ON TOP			
Abo @ 8407'			
Abo perms @ 8682'-90', 8714'-16', 8720'-34', & 8738'-50'			
(4 spf, 160 holes)			
40K gal 15% Ultra gel acid, 40K gal gel H ₂ O			
5-1/2" 17# N-80 csg @ 8995' - cmt w/350 sxs (7-7/8" hole)			
COMMENTS:	Working Interest:	PLUG BACK DEPTH:	
API # 30-025-39662	Net Revenue Interest:	TOTAL WELL DEPTH:	
Property#		PREPARED OR	DATE:
Spud Date:		REVISED BY:	
Completed in		pmp	7/13/2015

CURRENT

DIRECTIONS TO LOCATION: Directions to well needed.