

HOBBS OCD

JUN 26 2015

Form 3160-4
(August 2007)UNITED STATES
DEPARTMENT OF THE INTERIOR
BUREAU OF LAND MANAGEMENTFORM APPROVED
OMB No. 1004-0137
Expires: July 31, 2010

WELL COMPLETION OR RECOMPLETION REPORT AND LOG

RECEIVED

5. Lease Serial No.
NMNM120907

1a. Type of Well ☐ Oil Well ☐ Gas Well ☐ Dry ☒ Other: INJ
 b. Type of Completion ☒ New Well ☐ Work Over ☐ Deepen ☐ Plug Back ☐ Diff. Resvr.
 Other _____

6. If Indian, Allottee or Tribe Name

7. Unit or CA Agreement Name and No.

2. Name of Operator
COG OPERATING LLC
 Contact: BRIAN MAIORINO
 E-Mail: bmaiorino@concho.com

8. Lease Name and Well No.
GOLD COAST 26 FEDERAL SWD 1

3. Address ONE CONCHO CENTER 600 W. ILLINOIS AVE
MIDLAND, TX 79701

3a. Phone No. (include area code)
Ph: 432-221-0467

9. API Well No. 30-025-41507 41570

4. Location of Well (Report location clearly and in accordance with Federal requirements)*

At surface NESW 2310FSL 3210FWL

At top prod interval reported below NESW 2310FSL 3210FWL

At total depth NESW 2310FSL 3210FWL

10. Field and Pool, or Exploratory
SWD; DELAWARE **DELL CANYON - CHESS CANYON**
 11. Sec., T., R., M., or Block and Survey
or Area Sec 26 T24S R32E Mer

12. County or Parish
LEA

13. State
NM

14. Date Spudded
11/16/2014

15. Date T.D. Reached
11/27/2014

16. Date Completed
☐ D & A ☒ Ready to Prod.
06/05/2015

17. Elevations (DF, KB, RT, GL)*
3566 GL

18. Total Depth: MD
TVD 7200

19. Plug Back T.D.: MD
TVD 7163

20. Depth Bridge Plug Set: MD
TVD

21. Type Electric & Other Mechanical Logs Run (Submit copy of each)
MUD, POROSITY, RESISTIVITY, PUMP IN TRACER

22. Was well cored? ☒ No ☐ Yes (Submit analysis)
 Was DST run? ☒ No ☐ Yes (Submit analysis)
 Directional Survey? ☐ No ☒ Yes (Submit analysis)

23. Casing and Liner Record (Report all strings set in well)

| Hole Size | Size/Grade | Wt. (#/ft.) | Top (MD) | Bottom (MD) | Stage Cementer Depth | No. of Sk. & Type of Cement | Slurry Vol. (BBL) | Cement Top* | Amount Pulled |
|-----------|-------------|-------------|----------|-------------|----------------------|-----------------------------|-------------------|-------------|---------------|
| 17.500 | 13.375 J-55 | 54.5 | 0 | 1079 | | 1200 | | 0 | |
| 12.250 | 9.625 J-55 | 40.0 | 0 | 4903 | | 1900 | | 0 | |
| 8.750 | 7.000 J-55 | 29.0 | 0 | 7200 | | 700 | | 2690 | |
| | | | | | | | | | |
| | | | | | | | | | |
| | | | | | | | | | |
| | | | | | | | | | |
| | | | | | | | | | |

24. Tubing Record

| Size | Depth Set (MD) | Packer Depth (MD) | Size | Depth Set (MD) | Packer Depth (MD) | Size | Depth Set (MD) | Packer Depth (MD) |
|-------|----------------|-------------------|------|----------------|-------------------|------|----------------|-------------------|
| 4.500 | 5768 | 5768 | | | | | | |

25. Producing Intervals

| Formation | Top | Bottom | Perforated Interval | Size | No. Holes | Perf. Status |
|-------------|------|--------|---------------------|------|-----------|--------------|
| A) DELAWARE | 5828 | 7074 | 5828 TO 7074 | | 1308 | OPEN |
| B) | | | | | | |
| C) | | | | | | |
| D) | | | | | | |

27. Acid, Fracture, Treatment, Cement Squeeze, Etc.

| Depth Interval | Amount and Type of Material |
|----------------|-----------------------------|
| 5828 TO 7074 | ACIDIZE, 154 BBLS 15% HCL |
| | |
| | |
| | |

SWD-1791

28. Production - Interval A

| Date First Produced | Test Date | Hours Tested | Test Production | Oil BBL | Gas MCF | Water BBL | Oil Gravity Corr. API | Gas Gravity | Production Method |
|---------------------|----------------------|--------------|-----------------|---------|---------|-----------|-----------------------|-------------|-------------------|
| | | | → | | | | | | |
| Choke Size | Tbg. Press. Flwg. SI | Csg. Press. | 24 Hr. Rate | Oil BBL | Gas MCF | Water BBL | Gas:Oil Ratio | Well Status | |
| | | | → | | | | | | |

28a. Production - Interval B

| Date First Produced | Test Date | Hours Tested | Test Production | Oil BBL | Gas MCF | Water BBL | Oil Gravity Corr. API | Gas Gravity | Production Method |
|---------------------|----------------------|--------------|-----------------|---------|---------|-----------|-----------------------|-------------|-------------------|
| | | | → | | | | | | |
| Choke Size | Tbg. Press. Flwg. SI | Csg. Press. | 24 Hr. Rate | Oil BBL | Gas MCF | Water BBL | Gas:Oil Ratio | Well Status | |
| | | | → | | | | | | |

(See Instructions and spaces for additional data on)

ELECTRONIC SUBMISSION #306271 VERIFY

** OPERATOR-SUBM

Cancel Well _____ Create Pool _____

E-PERMITTING -- New Well _____

Comp. P&A _____ TA _____

CSNG ✓ Loc. Chng. **RADMS**

Re-Comp. Add New Well _____

ATOR-SUBMITTED ** JUL 23 2015

BS OCD 7:20
For Record Only

28b. Production - Interval C

| Date First Produced | Test Date | Hours Tested | Test Production | Oil BBL | Gas MCF | Water BBL | Oil Gravity Corr. API | Gas Gravity | Production Method |
|---------------------|----------------------|--------------|-----------------|---------|---------|-----------|-----------------------|-------------|-------------------|
| | | | → | | | | | | |
| Choke Size | Tbg. Press. Flwg. SI | Csg. Press. | 24 Hr. Rate | Oil BBL | Gas MCF | Water BBL | Gas:Oil Ratio | Well Status | |
| | | | → | | | | | | |

28c. Production - Interval D

| Date First Produced | Test Date | Hours Tested | Test Production | Oil BBL | Gas MCF | Water BBL | Oil Gravity Corr. API | Gas Gravity | Production Method |
|---------------------|----------------------|--------------|-----------------|---------|---------|-----------|-----------------------|-------------|-------------------|
| | | | → | | | | | | |
| Choke Size | Tbg. Press. Flwg. SI | Csg. Press. | 24 Hr. Rate | Oil BBL | Gas MCF | Water BBL | Gas:Oil Ratio | Well Status | |
| | | | → | | | | | | |

29. Disposition of Gas(Sold, used for fuel, vented, etc.)
UNKNOWN

30. Summary of Porous Zones (Include Aquifers):

Show all important zones of porosity and contents thereof. Cored intervals and all drill-stem tests, including depth interval tested, cushion used, time tool open, flowing and shut-in pressures and recoveries.

31. Formation (Log) Markers

| Formation | Top | Bottom | Descriptions, Contents, etc. | Name | Top |
|-----------|-----|--------|------------------------------|---|--|
| | | | | | Meas. Depth |
| | | | | RSLR TOP OF SALT BASE OF SALT LMAR BLCN CYCN | 1036 1353 4690 4912 4953 5822 |

32. Additional remarks (include plugging procedure):

33. Circle enclosed attachments:

- | | | | |
|---|--------------------|---------------|-----------------------|
| 1. Electrical/Mechanical Logs (1 full set req'd.) | 2. Geologic Report | 3. DST Report | 4. Directional Survey |
| 5. Sundry Notice for plugging and cement verification | 6. Core Analysis | 7 Other: | |

34. I hereby certify that the foregoing and attached information is complete and correct as determined from all available records (see attached instructions):

Electronic Submission #306271 Verified by the BLM Well Information System.
For COG OPERATING LLC, sent to the Hobbs

Name (please print) BRIAN MAIORINO

Title AUTHORIZED REPRESENTATIVE

Signature (Electronic Submission)

Date 06/23/2015

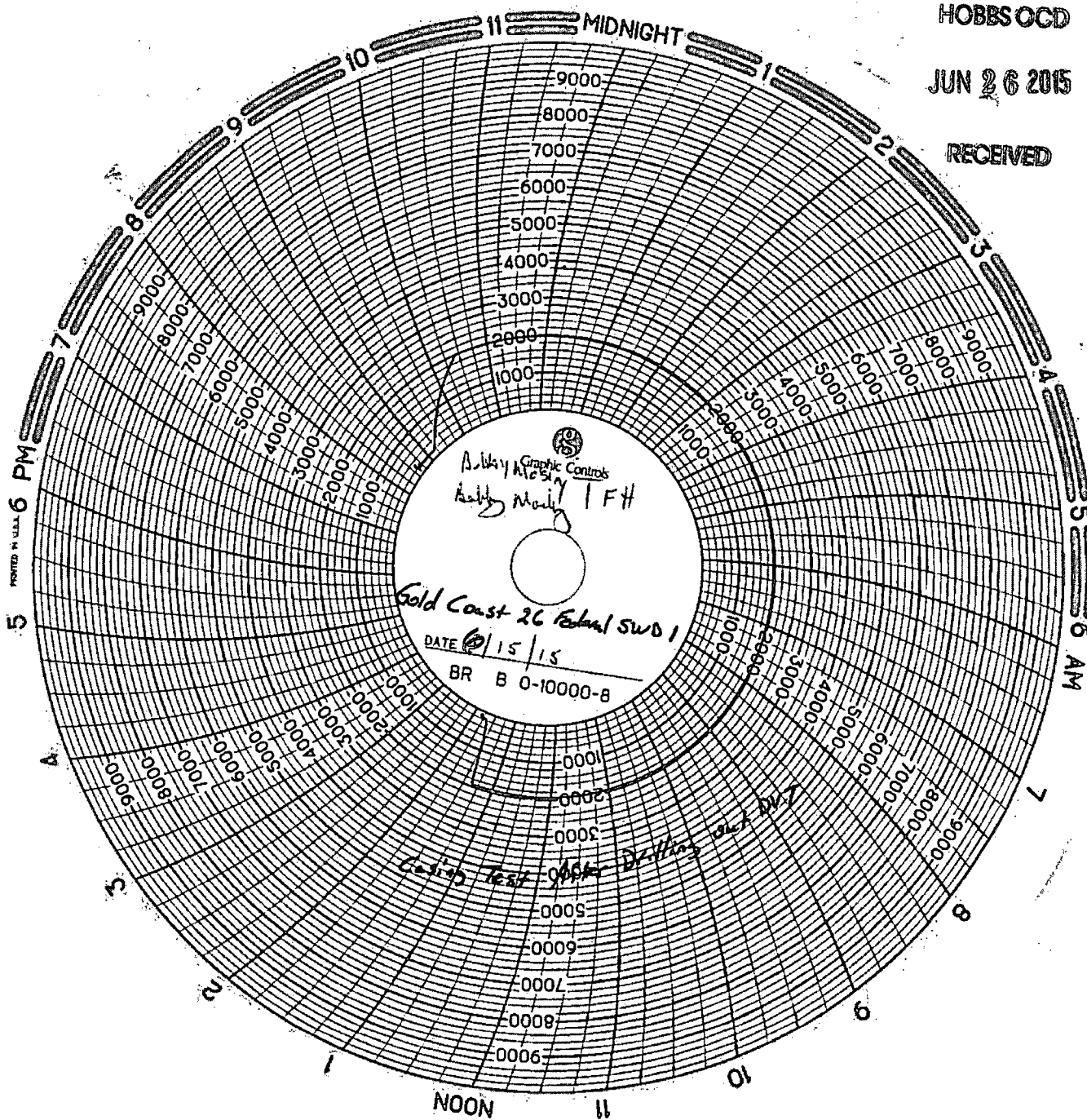
Title 18 U.S.C. Section 1001 and Title 43 U.S.C. Section 1212, make it a crime for any person knowingly and willfully to make to any department or agency of the United States any false, fictitious or fraudulent statements or representations as to any matter within its jurisdiction.

** ORIGINAL ** ORIGINAL ** ORIGINAL ** ORIGINAL ** ORIGINAL ** ORIGINAL ** ORIGINAL **

HOBBS OGD

JUN 26 2015

RECEIVED



BS OGD 7-2-15
For Record Only