

DISTRICT I  
1625 N. French Dr., Hobbs, NM 88240  
Phone (575) 393-6161 Fax: (575) 393-0720

DISTRICT II  
1301 W. Grand Avenue, Artesia, NM 88210  
Phone (575) 748-1283 Fax: (575) 748-0720

DISTRICT III  
1000 Rio Brazos Rd., Aztec, NM 87410  
Phone (505) 334-6178 Fax: (505) 334-6170

DISTRICT IV  
1220 S. St. Francis Dr., Santa Fe, NM 87505  
Phone (505) 476-3480 Fax: (505) 476-3482

# NM OIL CONSERVATION

ARTESIA DISTRICT

Form C-102

Revised August 1, 2011

State of New Mexico  
Energy, Minerals and Natural Resources Department

JUN 15 2015

Submit one copy to appropriate District Office

## OIL CONSERVATION DIVISION

1220 South St. Francis Dr.  
Santa Fe, New Mexico 87505

RECEIVED

JUL 22 2015

### WELL LOCATION AND ACREAGE DEDICATION PLAT

☐ AMENDED REPORT

API Number <b>30-025-42703</b>	Pool Code <b>40299</b>	Pool Name <b>Lost Tank; Delaware</b>
Property Code <b>37845</b>	Property Name <b>CAPELLA BOP FEDERAL</b>	Well Number <b>5H</b>
OGRID No. <b>025575</b>	Operator Name <b>YATES PETROLEUM CORP.</b>	Elevation <b>3707</b>

#### Surface Location

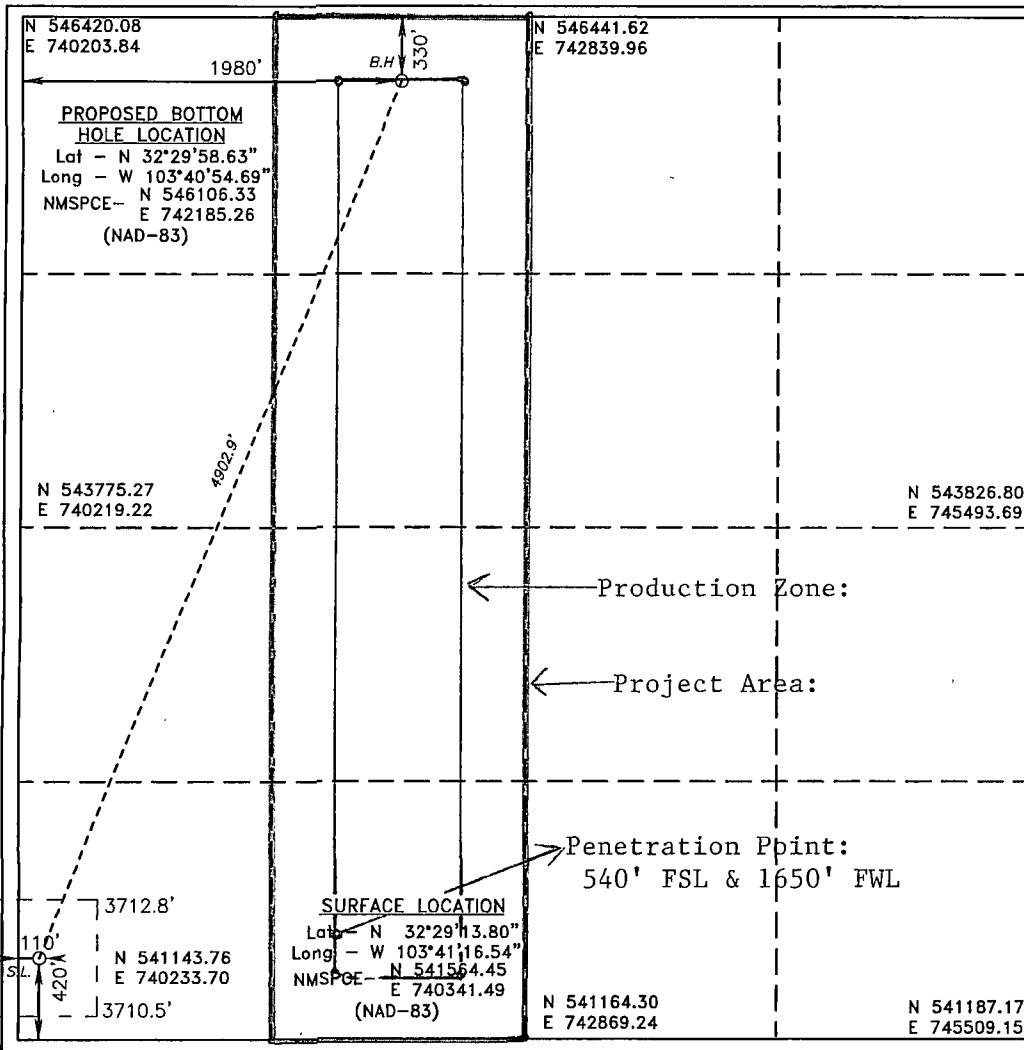
UL or lot No.	Section	Township	Range	Lot Idn	Feet from the	North/South line	Feet from the	East/West line	County
M	9	21 S	32 E		420	SOUTH	110	WEST	LEA

#### Bottom Hole Location If Different From Surface

UL or lot No.	Section	Township	Range	Lot Idn	Feet from the	North/South line	Feet from the	East/West line	County
C	9	21 S	32 E		330	NORTH	1980	WEST	LEA

Dedicated Acres	Joint or Infill	Consolidation Code	Order No.
160			

NO ALLOWABLE WILL BE ASSIGNED TO THIS COMPLETION UNTIL ALL INTERESTS HAVE BEEN CONSOLIDATED OR A NON-STANDARD UNIT HAS BEEN APPROVED BY THE DIVISION



#### OPERATOR CERTIFICATION

I hereby certify that the information contained herein is true and complete to the best of my knowledge and belief, and that this organization either owns a working interest or unleased mineral interest in the land including the proposed bottom hole location or has a right to drill this well at this location pursuant to a contract with an owner of such a mineral or working interest, or to a voluntary pooling agreement or a compulsory pooling order heretofore entered by the division.

*Travis Hahn* 11/7/2013  
Signature Date

Travis Hahn  
Printed Name  
thahn@yatespetroleum.com  
Email Address

#### SURVEYOR CERTIFICATION

I hereby certify that the well location shown on this plat was plotted from field notes of actual surveys made by me or under my supervision, and that the same is true and correct to the best of my knowledge.

*Gary L. Jones*  
Date Surveyed  
Signature and Seal of Professional Land Surveyor

W.O. No. 28381

Certificate No. Gary L. Jones 7977

BASIN SURVEYS 28381

JUL 23 2015

SECTION 9, TOWNSHIP 21 SOUTH, RANGE 32 EAST, N.M.P.M.,  
LEA COUNTY, NEW MEXICO.

YATES PETROLEUM CORP.  
CAPELLA BOP FEDERAL #5H

ELEV. - 3707

SURFACE LOCATION

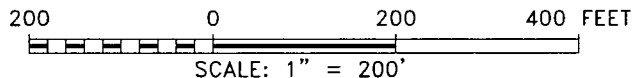
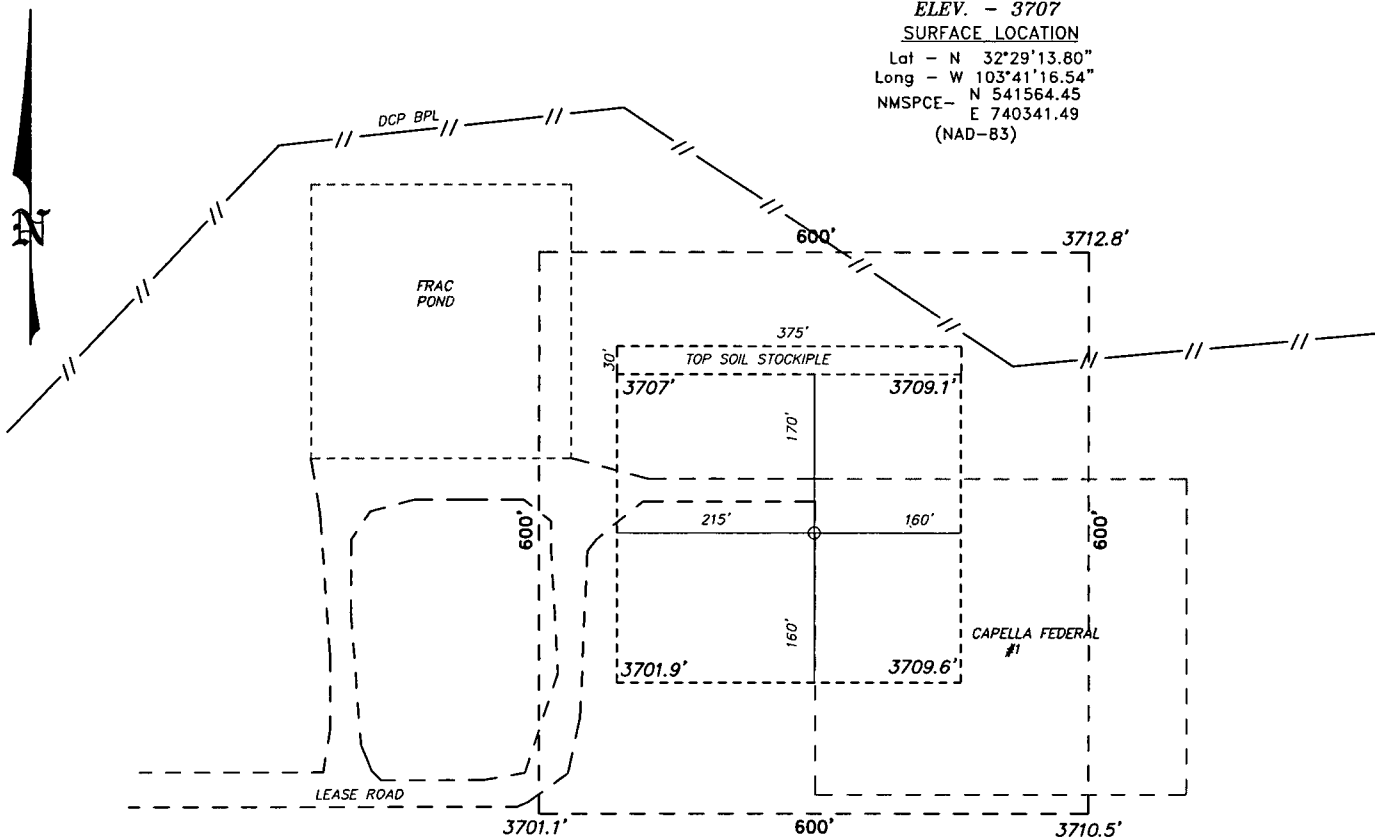
Lat - N 32°29'13.80"

Long - W 103°41'16.54"

NMSPCF- N 541564.45

E 740341.49

(NAD-83)



**YATES PETROLEUM CORP.**

REF: CAPELLA BOP FEDERAL #5H / WELL PAD TOPO

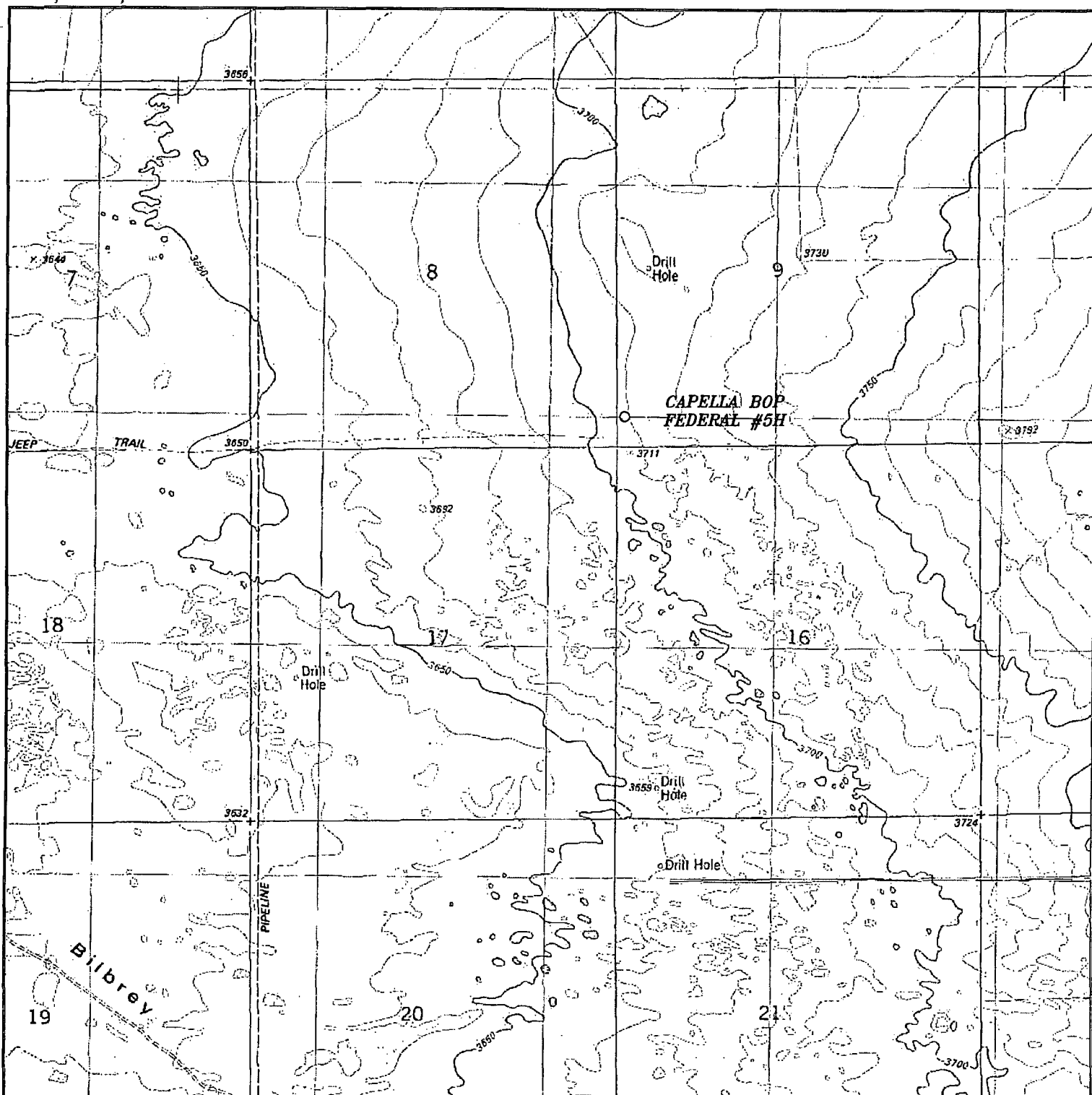
THE CAPELLA BOP FEDERAL #5H LOCATED 420'  
FROM THE SOUTH LINE AND 110 FROM THE WEST LINE OF  
SECTION 9, TOWNSHIP 21 SOUTH, RANGE 32 EAST,  
N.M.P.M., LEA COUNTY, NEW MEXICO.

**BASIN SURVEYS** P.O. BOX 1786—HOBBS, NEW MEXICO

W.O. Number: 28381      Drawn By: D. JONES

Date: 04-16-2013	Disk: DAJ 28381
------------------	-----------------

Survey Date: 03-13-2013      Sheet 1 of 1 Sheets



**CAPELLA BOP FEDERAL #5H**  
 Located 420' FSL and 110' FWL  
 Section 9, Township 21 South, Range 32 East,  
 N.M.P.M., LEA County, New Mexico.

**basin**  
**surveys**  
 focused on excellence  
 in the oilfield

P.O. Box 1786  
 1120 N. West County Rd.  
 Hobbs, New Mexico 88241  
 (575) 393-7316 - Office  
 (575) 392-2206 - Fax  
 basinsurveys.com

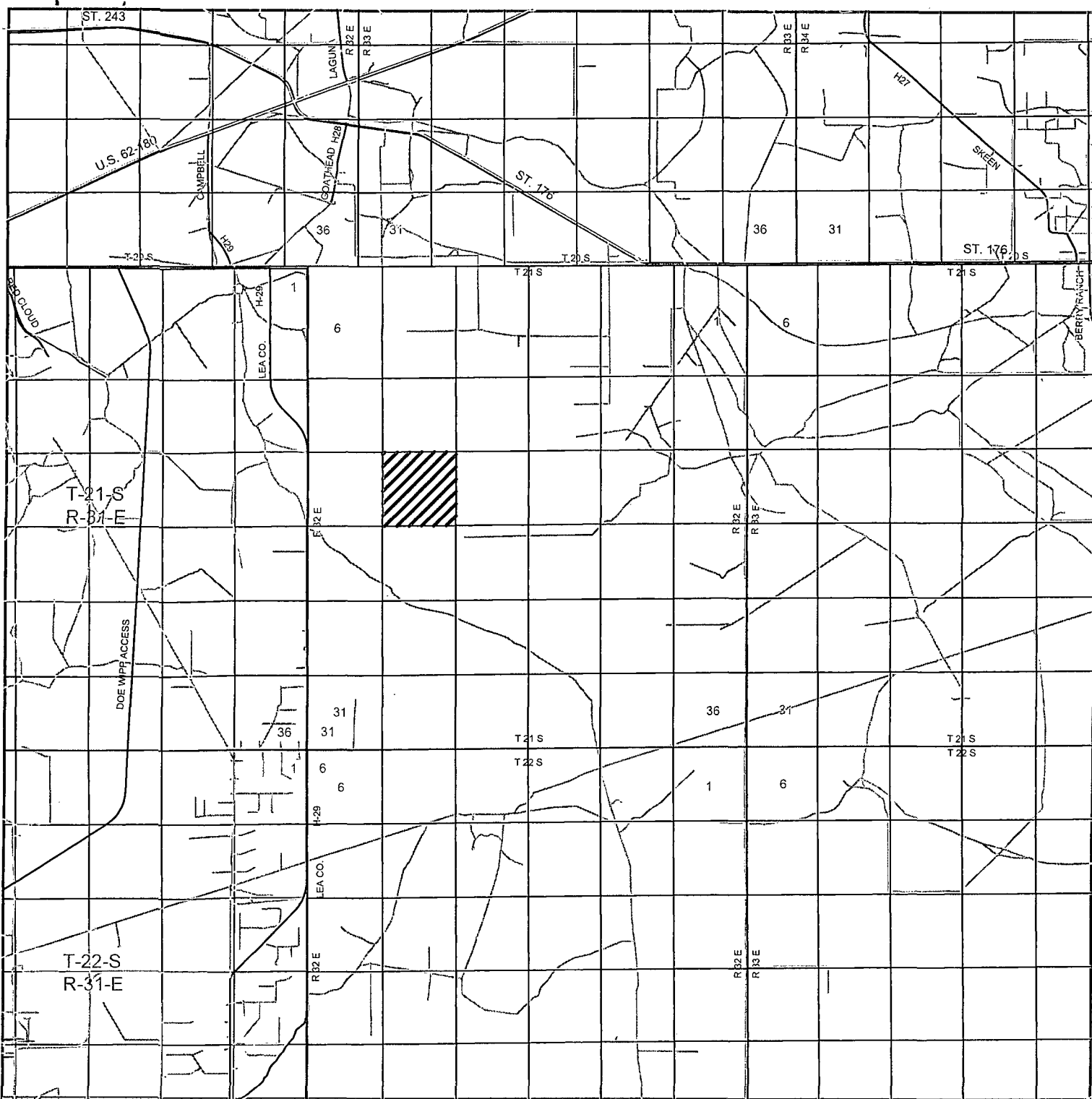
W.O. Number: DAJ 28381

Survey Date: 03-13-2013

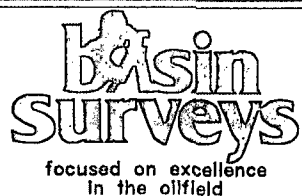
Scale: 1" = 2000'

Date: 04-16-2013

**YATES**  
**PETROLEUM**  
**CORP.**



**CAPELLA BOP FEDERAL #5H**  
 Located 420' FSL and 110' FWL  
 Section 9, Township 21 South, Range 32 East,  
 N.M.P.M., LEA County, New Mexico.



P.O. Box 1786  
 1120 N. West County Rd.  
 Hobbs, New Mexico 88241  
 (575) 393-7316 - Office  
 (575) 392-2206 - Fax  
 basinsurveys.com

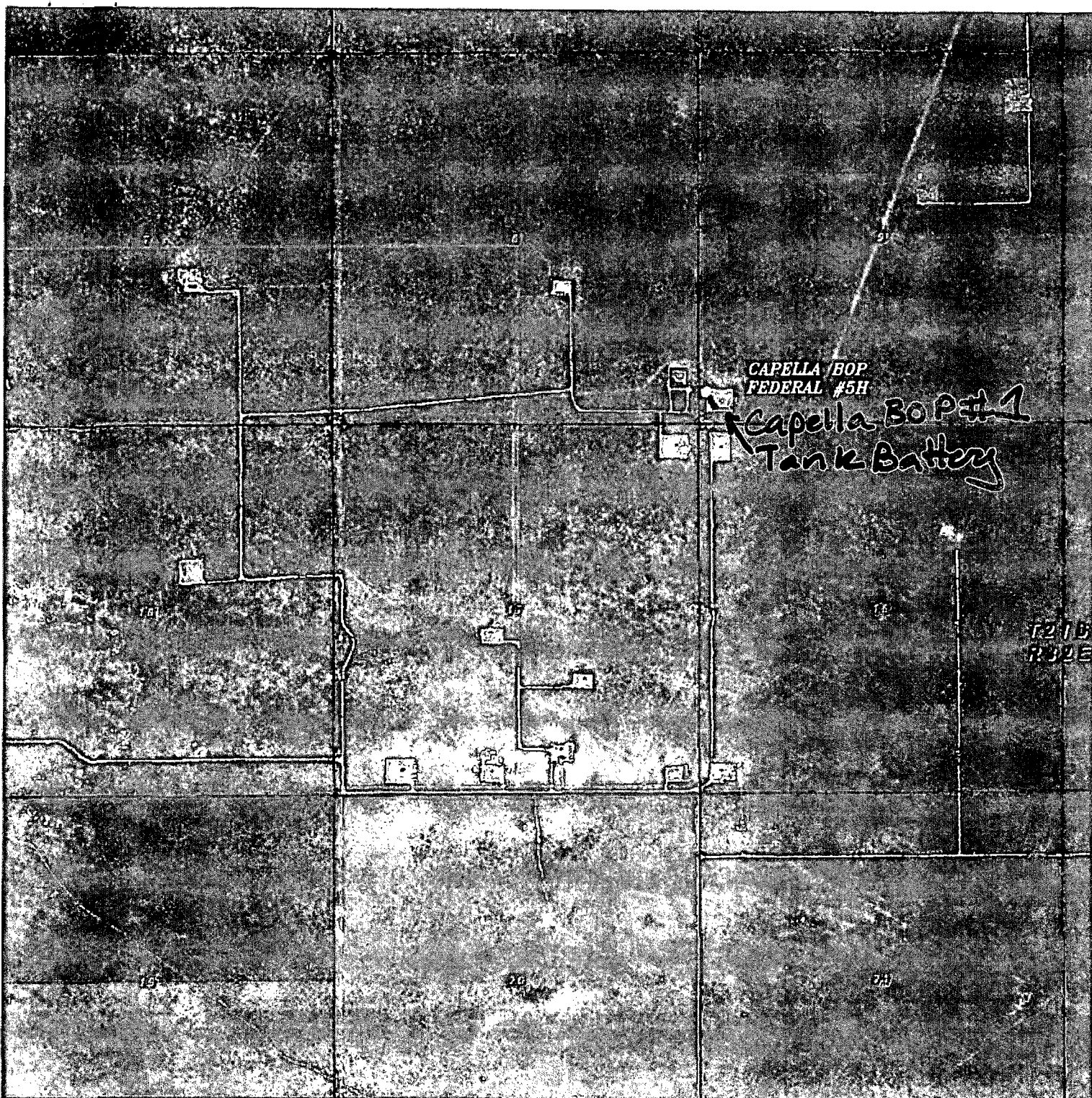
W.O. Number: DAJ 28381

Survey Date: 03-13-2013

Scale: 1" = 2 Miles

Date: 04-16-2013

**YATES**  
**PETROLEUM**  
**CORP.**



# CAPELLA BOP FEDERAL #5H

Located 420' FSL and 110' FWL

Section 9, Township 21 South, Range 32 East,  
N.M.P.M., LEA County, New Mexico.

Flow line Route  
map

**basin  
surveys**

focused on excellence  
in the oilfield

P.O. Box 1786  
1120 N. West County Rd.  
Hobbs, New Mexico 88241  
(575) 393-7316 - Office  
(575) 392-2206 - Fax  
basinsurveys.com

W.O. Number: DAJ 28381

Scale: 1" = 2000'

YELLOW TINT - USA LAND  
BLUE TINT - STATE LAND  
NATURAL COLOR - FEE LAND



YATES  
PETROLEUM  
CORP.



# Untitled Map

Write a description for your map.

## Legend

