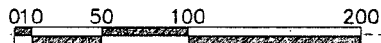


JUL 27 2015

# SITE MAP

PROPOSED 0.3 OF A MILE  
ACCESS ROAD TO NORTH SIDE  
OF PAD



FROM THE INTERSECTION OF STATE HIGHWAY 128 AND CR J2 (BRININSTOOL ROAD) GO NORTHWEST ON CR J2 APPROX. 3.2 MILES TO CALICHE LEASE ROAD ON RIGHT PAST FRAC POND, GO EAST (RIGHT) APPROX. 0.46 OF A MILE, TURN NORTH GO APPROX. 450', TURN RIGHT GO APPROX. 0.41 OF A MILE TAKE ROAD NORTH SIDE OF PAD GO APPROX. 0.3 OF A MILE TO THE NORTHWEST PAD CORNER.

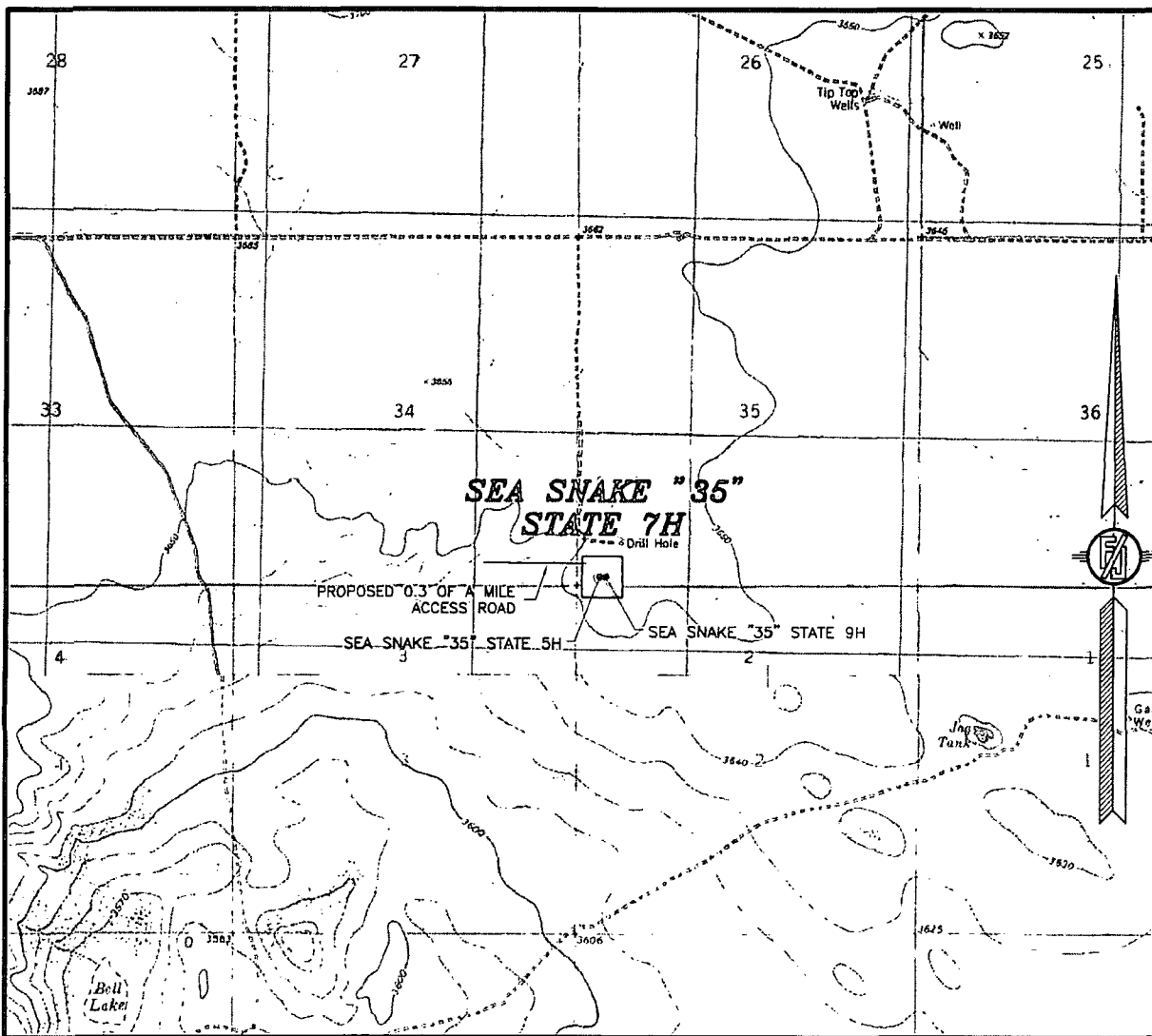
LOCATED 185 FT. FROM THE SOUTH LINE  
AND 350 FT. FROM THE WEST LINE OF  
SECTION 35, TOWNSHIP 23 SOUTH,  
RANGE 33 EAST, N.M.P.M.  
LEA COUNTY, STATE OF NEW MEXICO

*SURVEY NO. 3815*

*MADRON SURVEYING, INC.* 301 SOUTH CANAL  
(575) 234-3341

CARLSBAD, NEW MEXICO

SECTION 35, TOWNSHIP 23 SOUTH, RANGE 33 EAST, N.M.P.M.  
LEA COUNTY, STATE OF NEW MEXICO  
LOCATION VERIFICATION MAP



USGS QUAD MAP:  
TIP TOP WELLS

NOT TO SCALE

DEVON ENERGY PRODUCTION COMPANY, L.P.

**SEA SNAKE "35" STATE 7H**

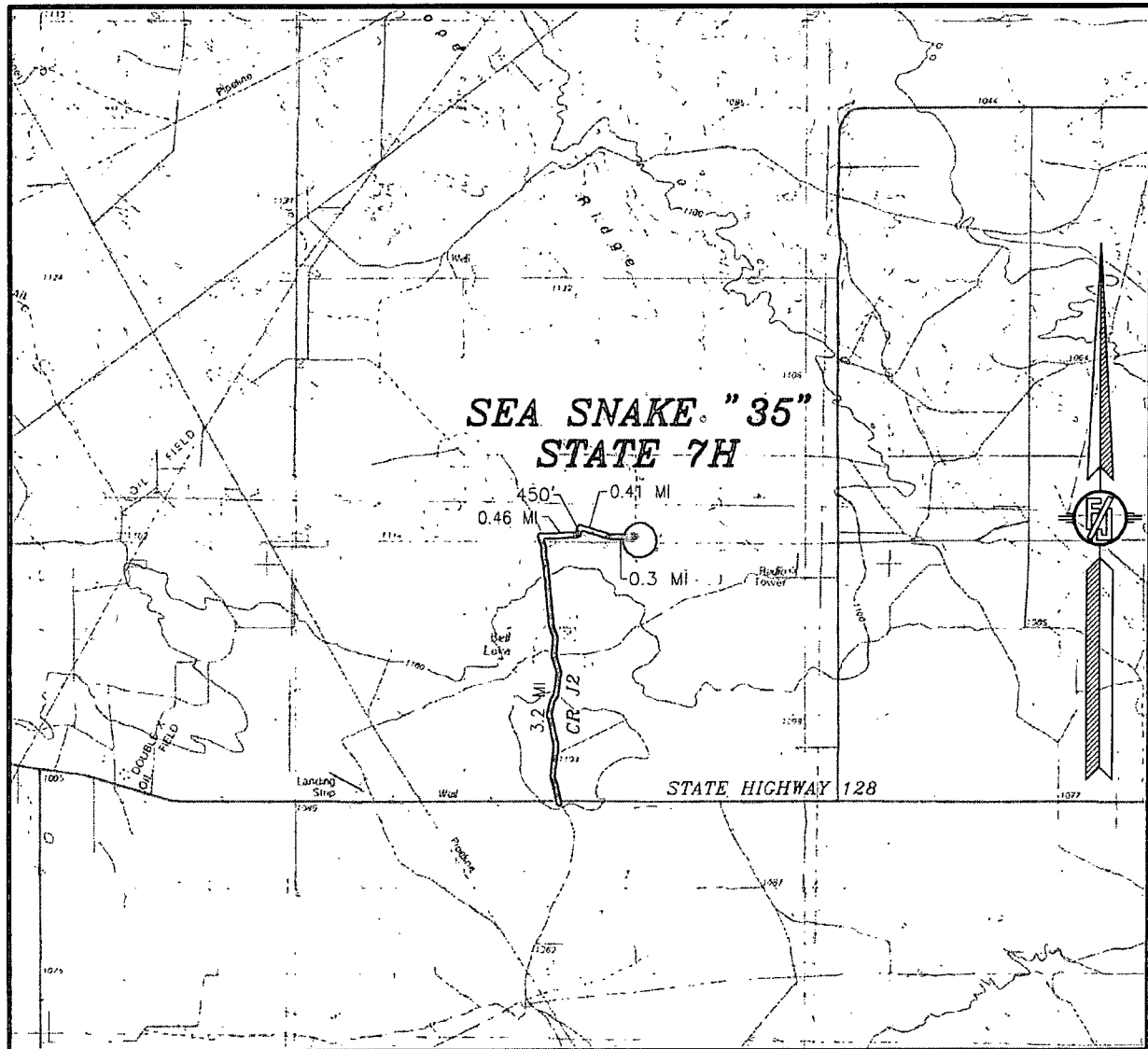
LOCATED 185 FT. FROM THE SOUTH LINE  
AND 350 FT. FROM THE WEST LINE OF  
SECTION 35, TOWNSHIP 23 SOUTH,  
RANGE 33 EAST, N.M.P.M.  
LEA COUNTY, STATE OF NEW MEXICO

APRIL 20, 2015

SURVEY NO. 3815

MADRON SURVEYING, INC. 301 SOUTH CANAL (575) 234-3341 CARLSBAD, NEW MEXICO

SECTION 35, TOWNSHIP 23 SOUTH, RANGE 33 EAST, N.M.P.M.  
LEA COUNTY, STATE OF NEW MEXICO  
VICINITY MAP



DISTANCES IN MILES

NOT TO SCALE

DEVON ENERGY PRODUCTION COMPANY, L.P.

~~SEA SNAKE "35" STATE 7H~~

LOCATED 185 FT. FROM THE SOUTH LINE  
AND 350 FT. FROM THE WEST LINE OF  
SECTION 35, TOWNSHIP 23 SOUTH,  
RANGE 33 EAST, N.M.P.M.  
LEA COUNTY, STATE OF NEW MEXICO

**DIRECTIONS TO LOCATION**

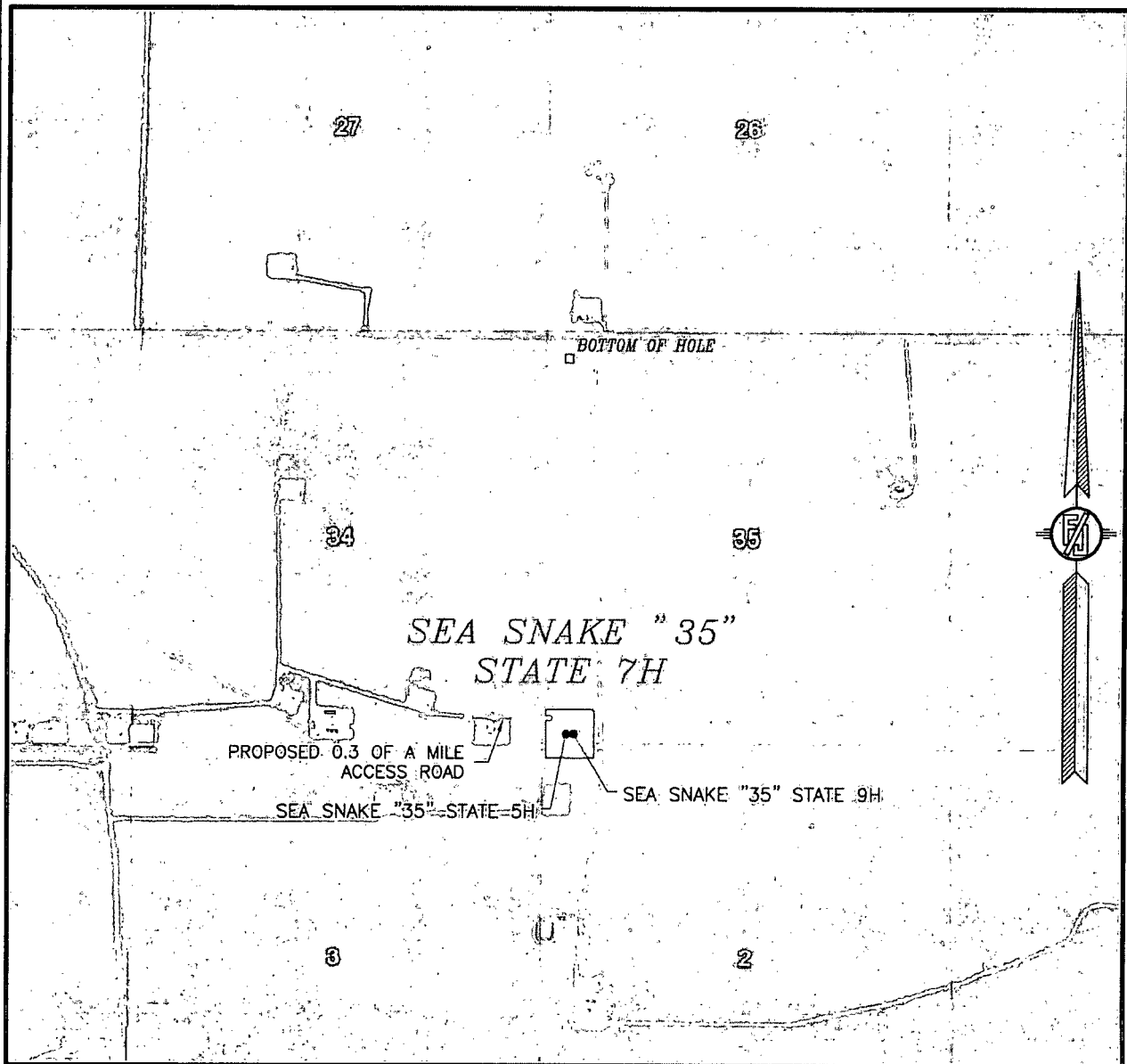
FROM THE INTERSECTION OF STATE HIGHWAY 128 AND CR J2  
(BRINSTOOL ROAD) GO NORTHWEST ON CR J2 APPROX. 3.2 MILES  
TO CALICHE LEASE ROAD ON RIGHT PAST FRAC POND, GO EAST  
(RIGHT) APPROX. 0.46 OF A MILE, TURN NORTH GO APPROX. 450',  
TURN RIGHT GO APPROX. 0.41 OF A MILE TAKE ROAD NORTH SIDE  
OF PAD GO APPROX. 0.3 OF A MILE TO THE NORTHWEST PAD  
CORNER.

APRIL 20, 2015

SURVEY NO. 3815

MADRON SURVEYING, INC. 301 SOUTH CANAL CARLSBAD, NEW MEXICO  
(575) 234-3341

SECTION 35, TOWNSHIP 23 SOUTH, RANGE 33 EAST, N.M.P.M.  
LEA COUNTY, STATE OF NEW MEXICO  
AERIAL PHOTO



NOT TO SCALE  
AERIAL PHOTO:  
GOOGLE EARTH  
FEBRUARY 2014

DEVON ENERGY PRODUCTION COMPANY, L.P.

**SEA SNAKE "35" STATE 7H**  
LOCATED 185 FT. FROM THE SOUTH LINE  
AND 350 FT. FROM THE WEST LINE OF  
SECTION 35, TOWNSHIP 23 SOUTH,  
RANGE 33 EAST, N.M.P.M.  
LEA COUNTY, STATE OF NEW MEXICO

APRIL 20, 2015

SURVEY NO. 3815

MADRON SURVEYING, INC. 301 SOUTH CANAL (575) 234-3341 CARLSBAD, NEW MEXICO

# ACCESS AERIAL ROUTE MAP

NOT TO SCALE  
AERIAL PHOTO:  
GOOGLE EARTH  
FEBRUARY 2014

~~DEVON ENERGY PRODUCTION COMPANY, L.P.~~

**SEA SNAKE "35" STATE 7H**  
**LOCATED 185 FT. FROM THE SOUTH LINE**  
**AND 350 FT. FROM THE WEST LINE OF**  
**SECTION 35, TOWNSHIP 23 SOUTH,**  
**RANGE 33 EAST, N.M.P.M.**  
**LEA COUNTY, STATE OF NEW MEXICO**

APRIL 20, 2015

*SURVEY NO. 3815*

MADRON SURVEYING, INC. 301 SOUTH CANAL (575) 234-3341 CARLSBAD, NEW MEXICO