

DISTRICT I
1625 N. French Dr., Hobbs, NM 88240
Phone (575) 393-6161 Fax: (575) 393-0720

DISTRICT II
811 S. First St., Artesia, NM 88210
Phone (575) 748-1283 Fax: (575) 748-9720

DISTRICT III
1000 Rio Brazos Rd., Aztec, NM 87410
Phone (505) 334-6178 Fax: (505) 334-6170

DISTRICT IV
1220 S. St. Francis Dr., Santa Fe, NM 87505
Phone (505) 476-3460 Fax: (505) 476-3462

State of New Mexico
Energy, Minerals and Natural Resources Department

Form C-102
Revised August 1, 2011

HOBBS

Submit one copy to appropriate
District Office

OIL CONSERVATION DIVISION

1220 South St. Francis Dr.
Santa Fe, New Mexico 87505

FEB 23 2015

WELL LOCATION AND ACREAGE DEDICATION PLAT RECEIVED AMENDED REPORT

API Number 30-025-42628	Pool Code 97756	Pool Name AGI
Property Code 39029	Property Name MALJAMAR AGI	Well Number 2
OGRID No. 22115	Operator Name FRONTIER ENERGY SERVICES	Elevation 4019

Surface Location

UL or lot No.	Section	Township	Range	Lot Idn	Feet from the	North/South line	Feet from the	East/West line	County
0	21	17 S	32 E		415	SOUTH	2115	EAST	LEA

Bottom Hole Location If Different From Surface

UL or lot No.	Section	Township	Range	Lot Idn	Feet from the	North/South line	Feet from the	East/West line	County
M	21	17 S	32 E		330	SOUTH	650	WEST	LEA

Dedicated Acres	Joint or Infill	Consolidation Code	Order No.

NO ALLOWABLE WILL BE ASSIGNED TO THIS COMPLETION UNTIL ALL INTERESTS HAVE BEEN CONSOLIDATED OR A NON-STANDARD UNIT HAS BEEN APPROVED BY THE DIVISION

N: 665189.8 E: 711294.9 (NAD-83)	IN: 665196.5 E: 713935.1 (NAD-83)	N: 665202.4 E: 716575.3 (NAD-83)
<p>BOTTOM HOLE LOCATION Lat - N 32°48'49.93" Long - W 103°46'40.50" NMSPCE- N 660264.1 E 711975.4 (NAD-83)</p>		
<p>SURFACE LOCATION Lat - N 32°48'50.50" Long - W 103°46'11.02" NMSPCE- N 660335.3 E 714491.2 (NAD-83)</p>		
<p>Diagram showing well location and distances: 650' N, 330' E from B.H. to S.L. 4021.5', 4024.4', 2115', 4014.8', 4015.9' distances around the well location.</p>		

OPERATOR CERTIFICATION
I hereby certify that the information contained herein is true and complete to the best of my knowledge and belief, and that this organization either owns a working interest or unleased mineral interest in the land including the proposed bottom hole location or has a right to drill this well at this location pursuant to a contract with an owner of such a mineral or working interest, or to a voluntary pooling agreement or a compulsory pooling order heretofore entered by the division.

Tom Sharp 2/20/2015
Signature Date
Tom Sharp Geolox consultant to Frontier Field Services
Printed Name
tsharp@geolox.com
Email Address

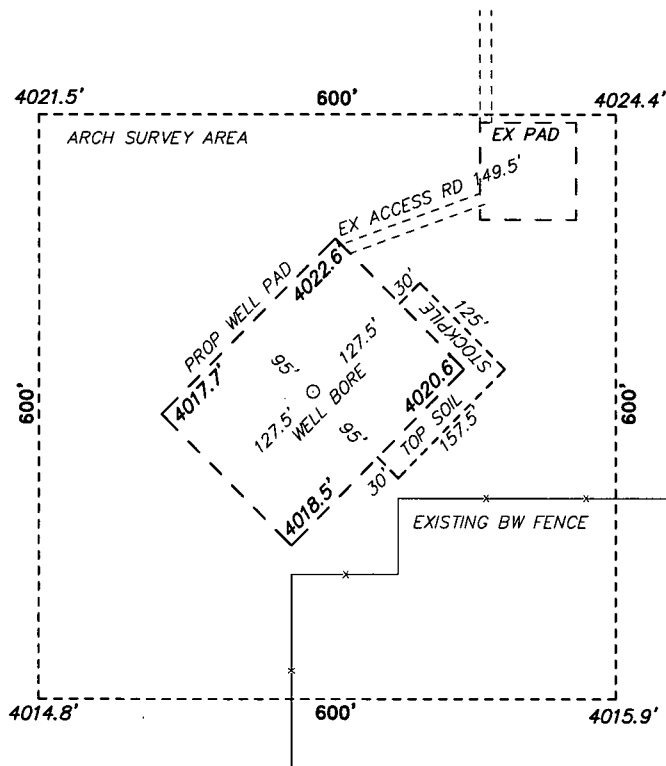
SURVEYOR CERTIFICATION
I hereby certify that the well location shown on this plat was plotted from field notes of actual surveys made by me or under my supervision, and that the same is true and correct to the best of my belief.

DECEMBER 10 2014
Date Surveyed
Signature & Seal of Professional Surveyor 7877
Certificate No. 7977
BASIN SURVEYS

Scale: 1" = 1000'
WO Num.: 31335

JUL 31 2015

Section 21, Township 17 South, Range 32 East, N.M.P.M.,
LEA COUNTY, NEW MEXICO.



FRONTIER ENERGY SERVICES
MALJAMAR AGI #2
ELEV. - 4019'
Lat - N 32°48'50.50"
Long - W 103°46'11.02"
NMSPCE- N 660335.3
E 714491.2
(NAD-83)

MALJAMAR, NM IS ±3 MILES TO THE NORTHEAST OF LOCATION.

Directions to Location:

FROM U HWY 529 GO NORTH 1.89 MILES, TURN WEST 2043 FEET, SOUTH ON LEASE ROAD 738.3 FEET, AND SOUTHWEST 158.2 FEET TO PROPOSED LOCATION.

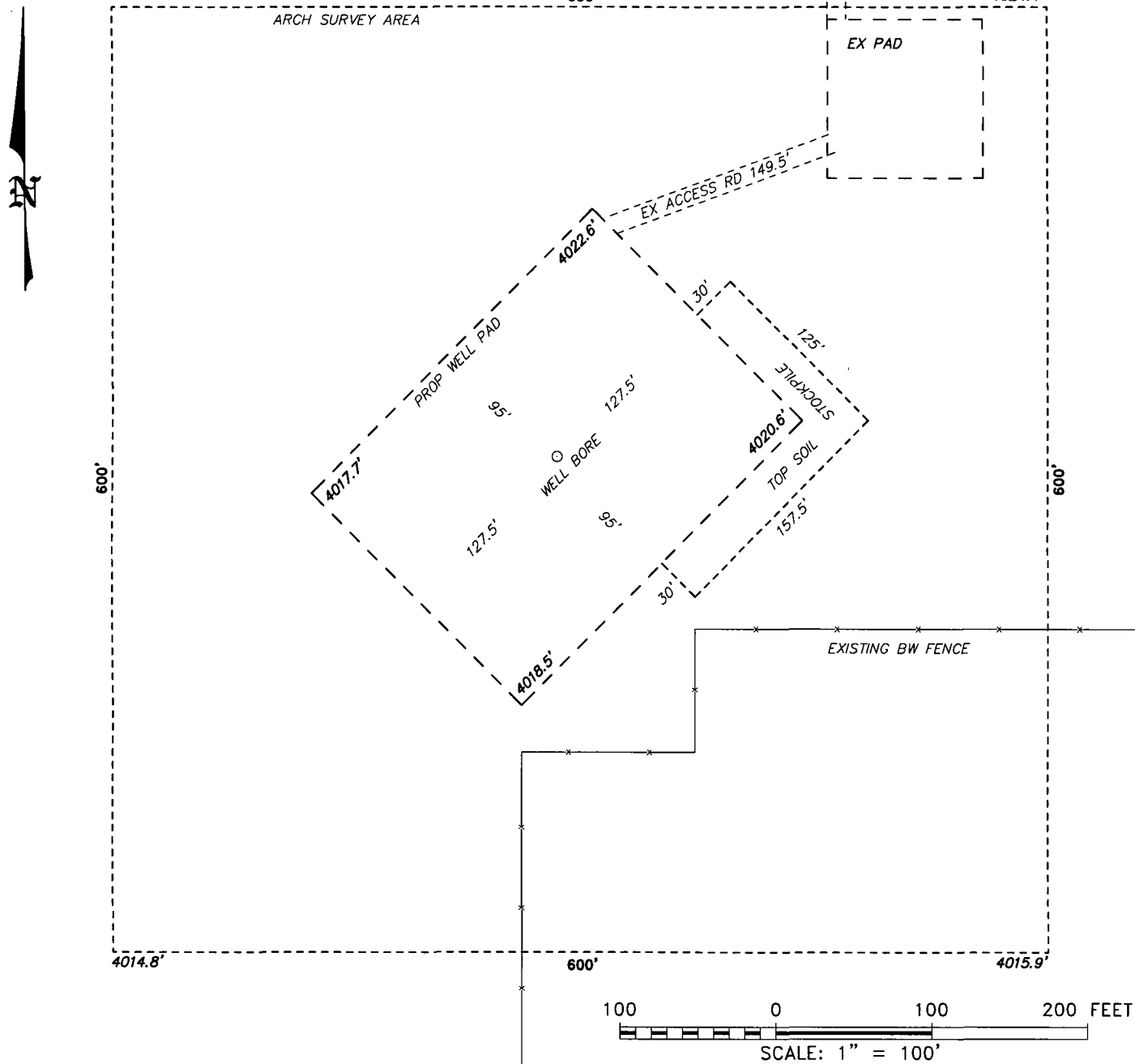
200 0 200 400 FEET
SCALE: 1" = 200'

basin surveys
focused on excellence
in the oilfield

P.O. Box 1786 (575) 393-7316 - Office
1120 N. West County Rd. (575) 392-2206 - Fax
Hobbs, New Mexico 88241 basin-surveys.com

FRONTIER field services, llc
REF: MALJAMAR AGI #2 / WELL PAD TOPO
THE MALJAMAR AGI #2 LOCATED 415' FROM
THE SOUTH LINE AND 2115' FROM THE EAST LINE OF
SECTION 21, TOWNSHIP 17 SOUTH, RANGE 32 EAST.
N.M.P.M., LEA COUNTY, NEW MEXICO.

Section 21, Township 17 South, Range 32 East, N.M.P.M.,
LEA COUNTY, NEW MEXICO.



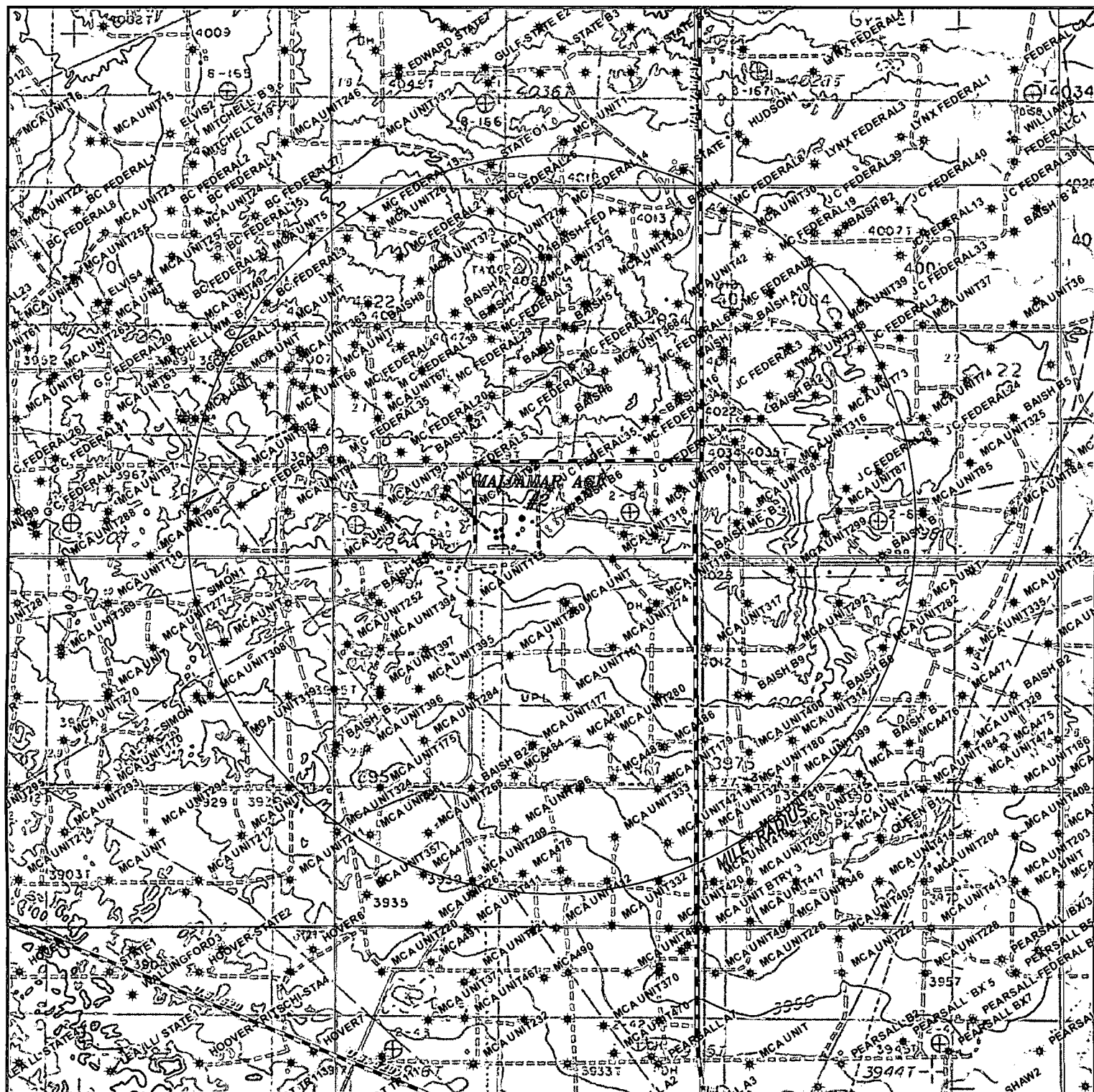
basin
surveys
focused on excellence
in the oilfield

P.O. Box 1786 (575) 393-7316 - Office
1120 N. West County Rd. (575) 392-2206 - Fax
Hobbs, New Mexico 88241 basinsurveys.com



REF: MALJAMAR AGI #2 / WELL PAD TOPO

THE MALJAMAR AGI #2 LOCATED 415' FROM
THE SOUTH LINE AND 2115' FROM THE EAST LINE OF
SECTION 21, TOWNSHIP 17 SOUTH, RANGE 32 EAST.
N.M.P.M., LEA COUNTY, NEW MEXICO.



MALJAMAR AGI #2

Located 415' FSL and 2115' FEL
Section 21, Township 17 South, Range 32 East,
N.M.P.M., LEA County, New Mexico.

basin
surveys
focused on excellence
in the oilfield

P.O. Box 1786
1120 N. West County Rd.
Hobbs, New Mexico 88241
(575) 393-7316 - Office
(575) 392-2206 - Fax
basinsurveys.com

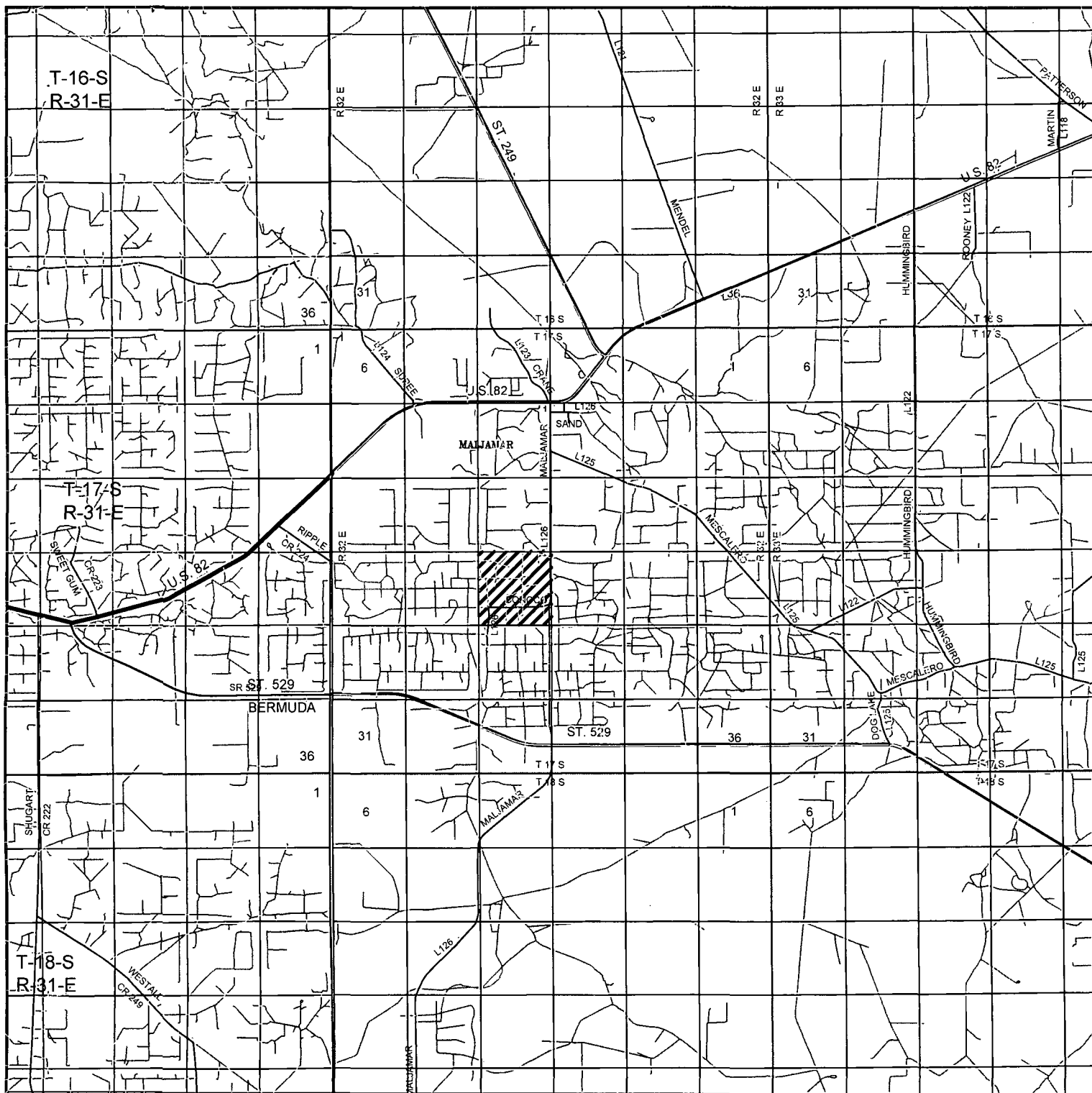
0' 1000' 2000' 3000' 4000'
SCALE: 1" = 2000'

W.O. Number: KAN 31335

Survey Date: 12-11-2014

YELLOW TINT - USA LAND
BLUE TINT - STATE LAND
NATURAL COLOR - FEE LAND

FRONTIER
field services, llc



MALJAMAR AGI #2

Located 415' FSL and 2115' FEL
Section 21, Township 17 South, Range 32 East,
N.M.P.M., LEA County, New Mexico.

basin
surveys

focused on excellence
in the oilfield

P.O. Box 1786
1120 N. West County Rd.
Hobbs, New Mexico 88241
(575) 393-7316 - Office
(575) 392-2206 - Fax
basinsurveys.com

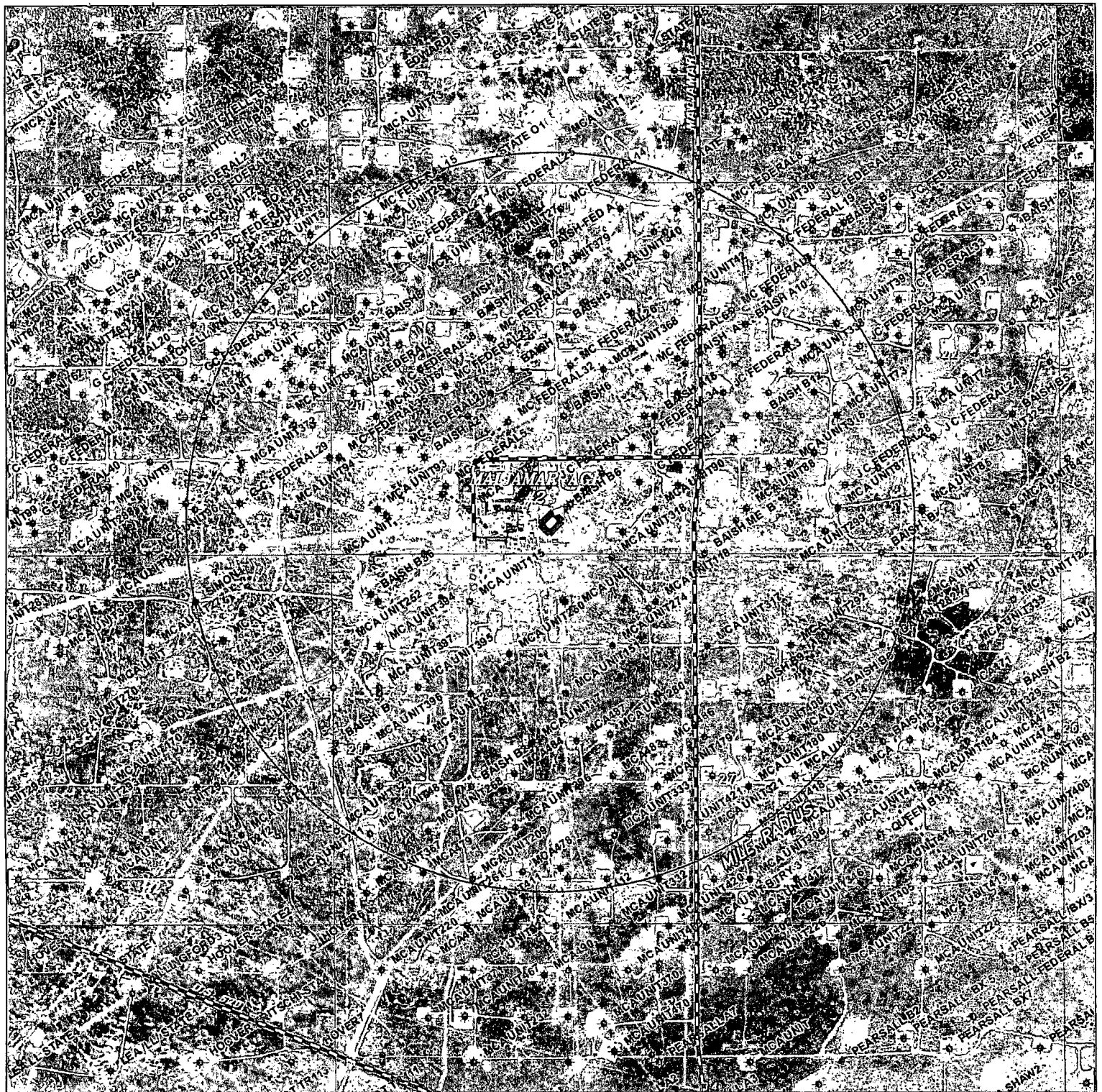
0 1 MI 2 MI 3 MI 4 MI
SCALE: 1" = 2 MILES

W.O. Number: KAN 31335

Survey Date: 12-11-2014

YELLOW TINT - USA LAND
BLUE TINT - STATE LAND
NATURAL COLOR - FEE LAND

FRONTIER
field services, llc



MALJAMAR AGI #2

Located 415' FSL and 2115' FEL
Section 21, Township 17 South, Range 32 East,
N.M.P.M., LEA County, New Mexico.

basin
surveys
focused on excellence
in the oilfield

P.O. Box 1786
1120 N. West County Rd.
Hobbs, New Mexico 88241
(575) 393-7316 - Office
(575) 392-2206 - Fax
basinsurveys.com

0' 1000' 2000' 3000' 4000'
SCALE: 1" = 2000'

W.O. Number: KAN 31335

Survey Date: 12-11-2014

YELLOW TINT - USA LAND
BLUE TINT - STATE LAND
NATURAL COLOR - FEE LAND

FRONTIER
field services, llc

HOBSOCD

FEB 23 2015

RECEIVED

February 20, 2015

Mr. Maxey Brown
District Supervisor
NMOCD Hobbs District Office
1625 French Drive
Hobbs, NM 87240

VIA FEDERAL EXPRESS

RE: SUBMITTAL OF REVISED FORM C-102 FOR MALJAMAR AGI #2

Dear Mr. Brown:

Please find enclosed the revised survey for Maljamar AGI #2. The proposed surface location for Maljamar AGI #2 was relocated 15 feet to the north and 15 feet to the west to stay clear of existing pipelines.

If you have any questions or need additional information, please call me at 505-842-8000.

Sincerely,
Geolex, Inc.



Tom Sharp

Attachments

cc via email w/o attachments: Mr. Coy Bryant, AKA Energy Corp, LLC
Ms. Kourtney Hadrick, AKA Energy Corp, LLC
Ms. Julie Dossey, AKA Energy Corp, LLC
Alberto A. Gutierrez, RG, Geolex, Inc.

P:\13-017\C-102\Maljamar 2 C-102 Revised Submittal to OCD.docx