

District I  
1625 N. French Dr., Hobbs, NM 88240  
Phone: (575) 393-6161 Fax: (575) 393-0720  
District II  
811 S. First St., Artesia, NM 88210  
Phone: (575) 748-1283 Fax: (575) 748-9720  
District III  
1000 Rio Brazos Road, Aztec, NM 87410  
Phone: (505) 334-6178 Fax: (505) 334-6170  
District IV  
1220 S. St. Francis Dr., Santa Fe, NM 87505  
Phone: (505) 476-3460 Fax: (505) 476-3462

State of New Mexico  
Energy, Minerals & Natural Resources Department  
OIL CONSERVATION DIVISION  
1220 South St. Francis Dr.  
Santa Fe, NM 87505

Form C-102  
Revised August 1, 2011  
Submit one copy to appropriate  
District Office

☐ AMENDED REPORT

WELL LOCATION AND ACREAGE DEDICATION PLAT

<sup>1</sup> API Number 30-025- <b>42711</b>		<sup>2</sup> Pool Code 62180	<sup>3</sup> Pool Name Vacuum; Grayburg, San Andres
<sup>4</sup> Property Code 31172	<sup>5</sup> Property Name EAST VACUUM GBSA UNIT 3202		<sup>6</sup> Well Number 512W
<sup>7</sup> OGRID No. 217817	<sup>8</sup> Operator Name ConocoPhillips Company		<sup>9</sup> Elevation 3953'

<sup>10</sup> Surface Location

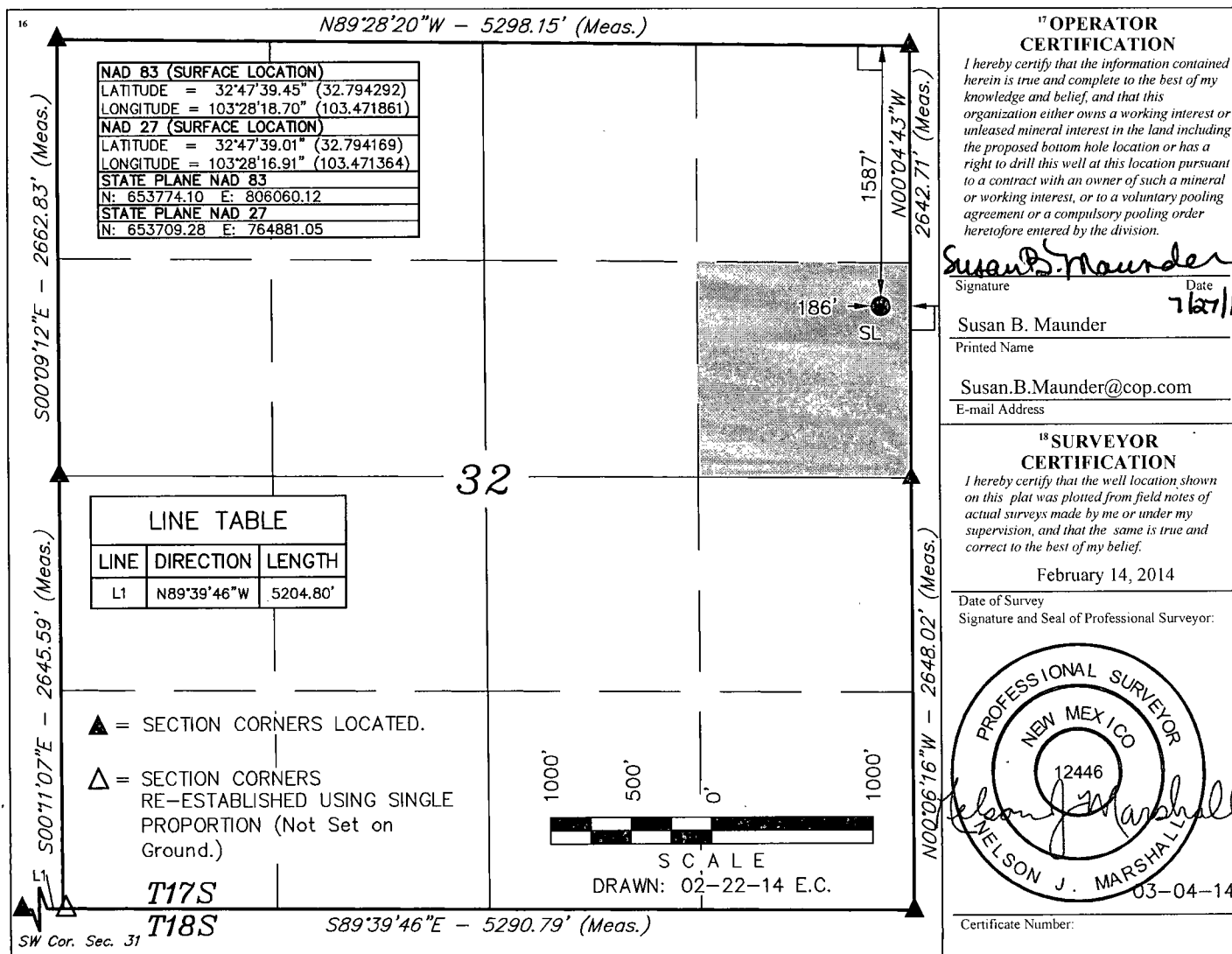
UL or lot no.	Section	Township	Range	Lot Idn	Feet from the	North/South line	Feet from the	East/West line	County
H	32	17S	35E		1587	NORTH	186	EAST	LEA

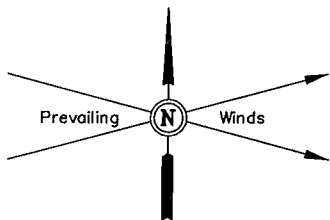
<sup>11</sup> Bottom Hole Location If Different From Surface

UL or lot no.	Section	Township	Range	Lot Idn	Feet from the	North/South line	Feet from the	East/West line	County

<sup>12</sup> Dedicated Acres 40	<sup>13</sup> Joint or Infill	<sup>14</sup> Consolidation Code	<sup>15</sup> Order No. WFX-945
-------------------------------------	-------------------------------	----------------------------------	------------------------------------

No allowable will be assigned to this completion until all interests have been consolidated or a non-standard unit has been approved by the division.



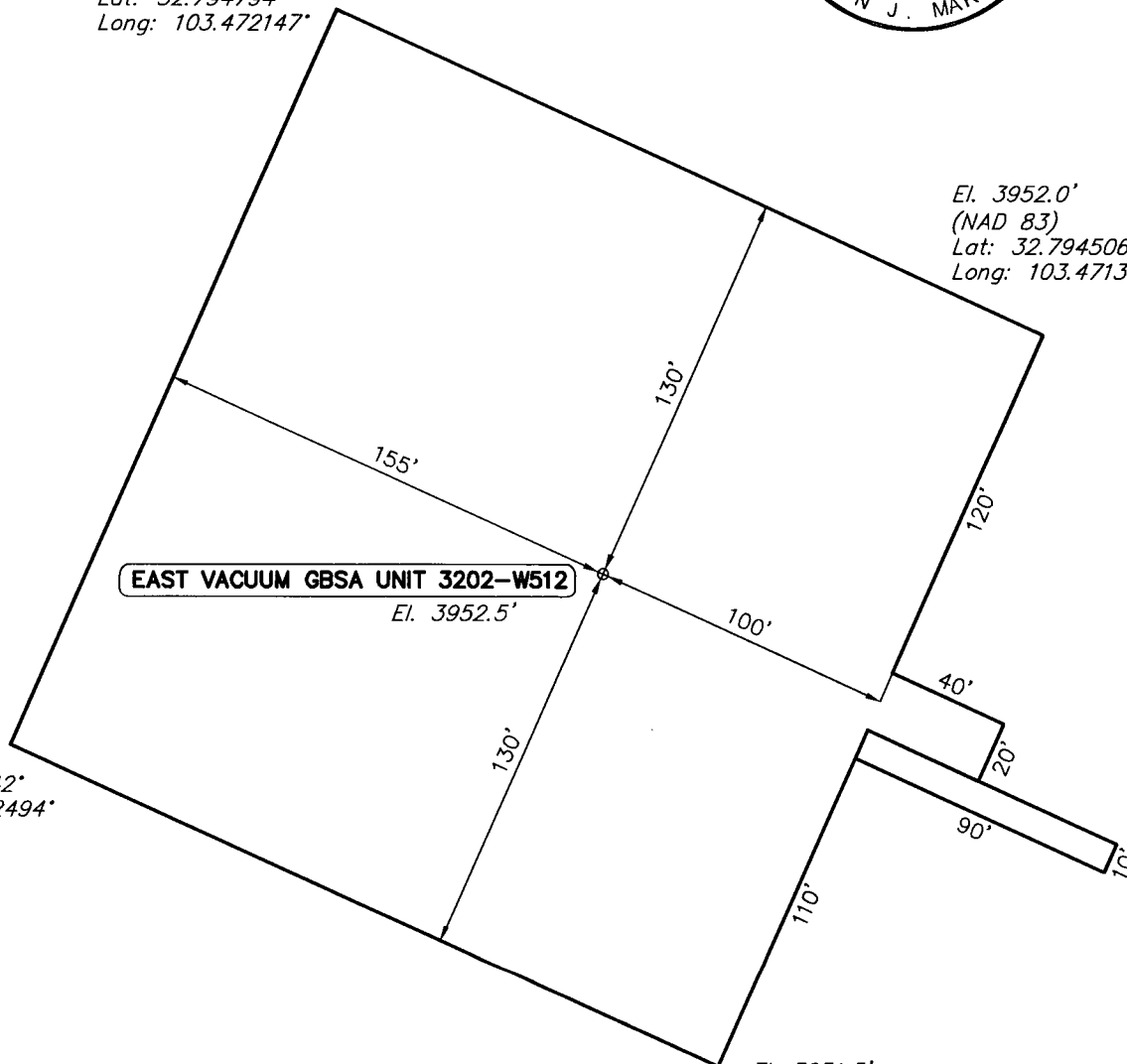


Section 32  
Section 33

El. 3953.4'  
(NAD 83)  
Lat: 32.794794°  
Long: 103.472147°

El. 3952.0'  
(NAD 83)  
Lat: 32.794506°  
Long: 103.471392°

El. 3953.4'  
(NAD 83)  
Lat: 32.794142°  
Long: 103.472494°



El. 3951.5'  
(NAD 83)  
Lat: 32.793856°  
Long: 103.471739°

ELEV. UNGRADED GROUND AT LOC. STAKE = 3952.5'

**NOTES:**

- Flare pit is to be located a min. of 100' from the well head.
- Underground utilities shown on this sheet are for visualization purposes only, actual locations to be determined prior to construction.

ConocoPhillips

**ConocoPhillips Company**

**EAST VACUUM GBSA UNIT 3202-W512**  
**SECTION 32, T17S, R35E, N.M.P.M.**  
**1587' FNL 186' FEL**

DRAWN: E.C.

SCALE: 1" = 60'

DATE: 02-22-14

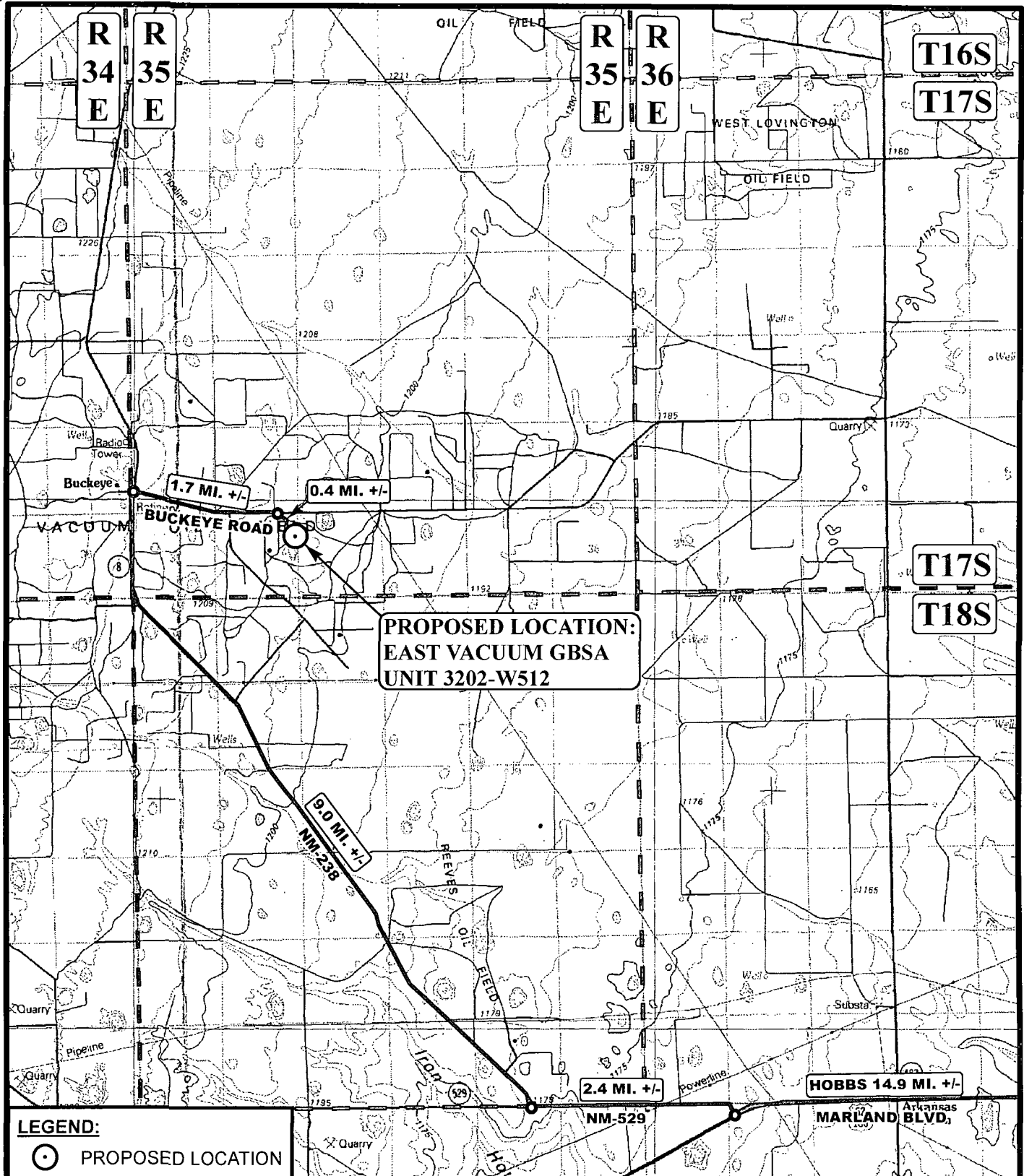
REVISED:

**LOCATION LAYOUT**

**FIGURE #1**



Corporate Office \* 85 South 200 East  
Vernal, UT 84078 \* (435) 789-1017



SCALE: 1:100,000

REVISED:

DRAWN BY: L.S.

DATE DRAWN: 02-26-14



ConocoPhillips

ConocoPhillips Company

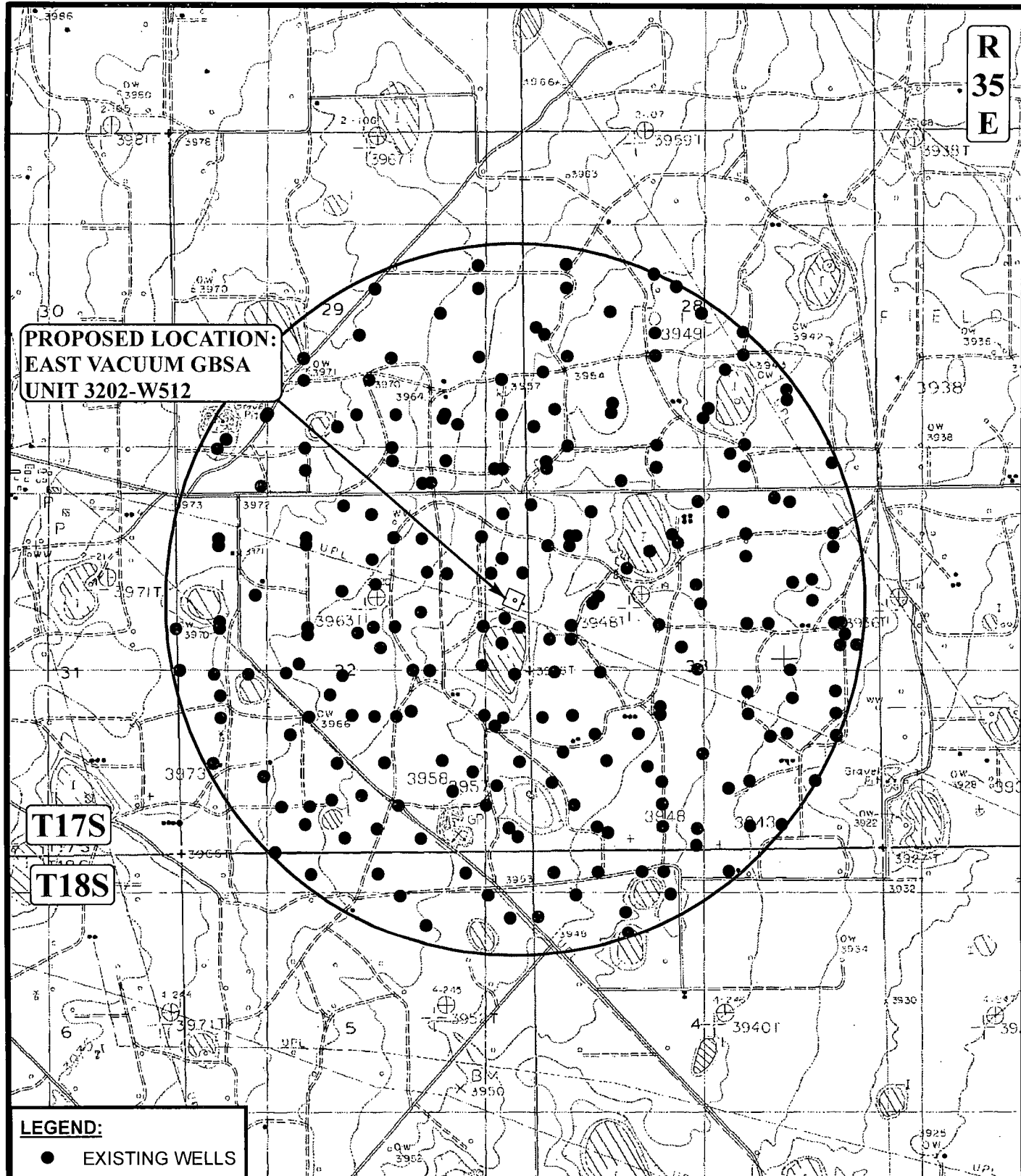
EAST VACUUM GBSA UNIT 3202-W512  
 SECTION 32, T17S, R35E, N.M.P.M.  
 1587' FNL 186' FEL

ACCESS ROAD MAP

TOPO A



Corporate Office \* 85 South 200 East  
 Vernal, UT 84078 \* (435) 789-1017



**LEGEND:**

● EXISTING WELLS

SCALE: 1" = 2000'

REVISED:

DRAWN BY: L.S.

DATE DRAWN: 02-26-14

N

ConocoPhillips

ConocoPhillips Company

EAST VACUUM GBSA UNIT 3202-W512  
SECTION 32, T17S, R35E, N.M.P.M.  
1587' FNL 186' FEL

TOPOGRAPHIC MAP

TOPO.C



Corporate Office \* 85 South 200 East  
Vernal, UT 84078 \* (435) 789-1017