

District I  
1625 N. French Dr., Hobbs, NM 88240  
Phone: (575) 393-6161 Fax: (575) 393-0720  
District II  
811 S. First St., Artesia, NM 88210  
Phone: (575) 748-1283 Fax: (575) 748-9720  
District III  
1000 Rio Brazos Road, Aztec, NM 87410  
Phone: (505) 334-6178 Fax: (505) 334-6170  
District IV  
1220 S. St. Francis Dr., Santa Fe, NM 87505  
Phone: (505) 476-3460 Fax: (505) 476-3462

State of New Mexico  
Energy, Minerals & Natural Resources Department  
OIL CONSERVATION DIVISION  
1220 South St. Francis Dr.  
Santa Fe, NM 87505

Form C-102  
Revised August 1, 2011  
Submit one copy to appropriate  
District Office

☐ AMENDED REPORT

WELL LOCATION AND ACREAGE DEDICATION PLAT

<sup>1</sup> API Number 30-025- <b>42721</b>	<sup>2</sup> Pool Code 62180	<sup>3</sup> Pool Name Vacuum; Grayburg, San Andres
<sup>4</sup> Property Code 31172	<sup>5</sup> Property Name EAST VACUUM GB SA UNIT 3374	
<sup>7</sup> OGRID No. 217817	<sup>8</sup> Operator Name ConocoPhillips Company	<sup>6</sup> Well Number 516W  <sup>9</sup> Elevation 3952'

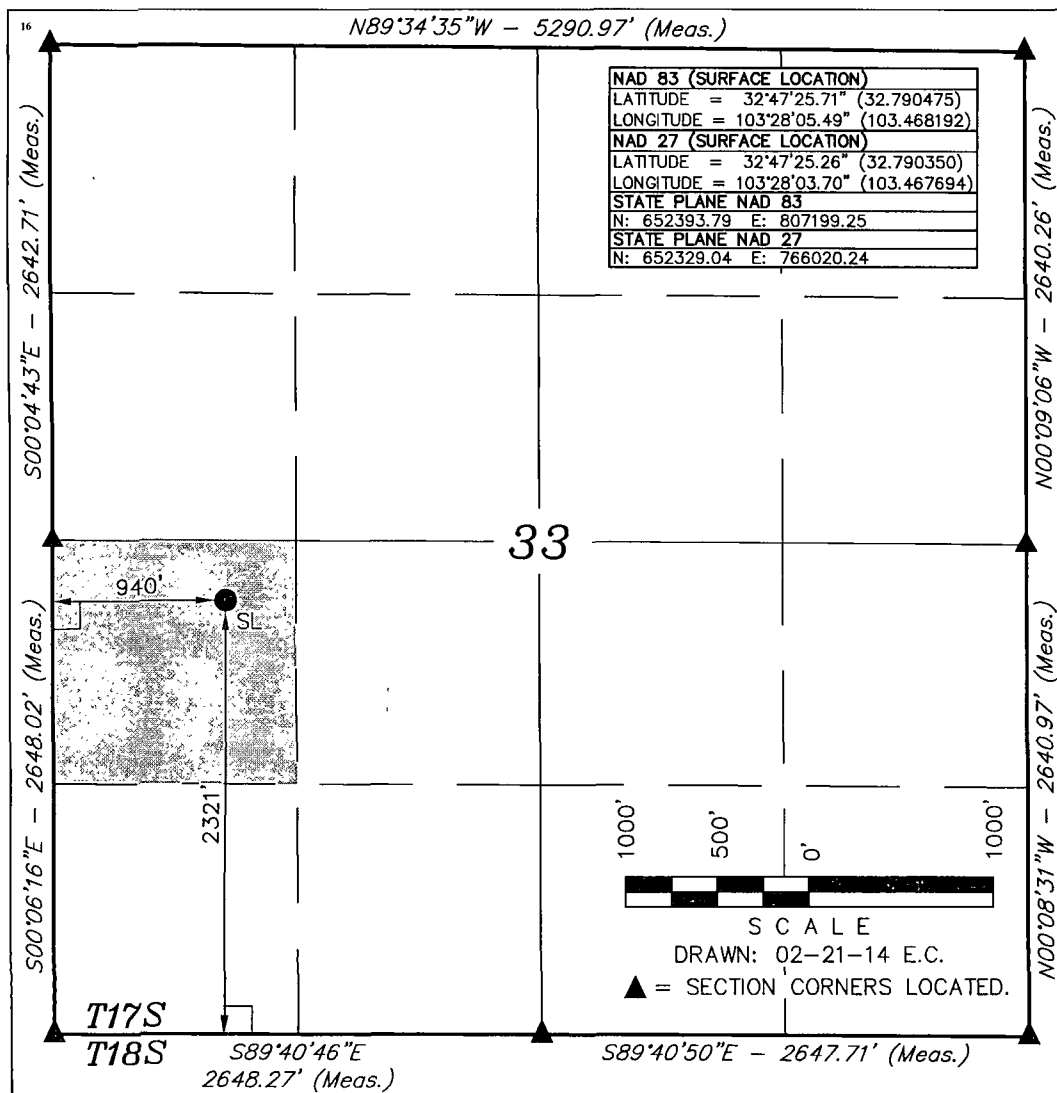
<sup>10</sup> Surface Location

UL or lot no.	Section	Township	Range	Lot Idn	Feet from the	North/South line	Feet from the	East/West line	County
L	33	17S	35E		2321	SOUTH	940	WEST	LEA

<sup>11</sup> Bottom Hole Location If Different From Surface

UL or lot no.	Section	Township	Range	Lot Idn	Feet from the	North/South line	Feet from the	East/West line	County
<sup>12</sup> Dedicated Acres 40	<sup>13</sup> Joint or Infill	<sup>14</sup> Consolidation Code	<sup>15</sup> Order No. WFX-945						

No allowable will be assigned to this completion until all interests have been consolidated or a non-standard unit has been approved by the division.



<sup>17</sup> OPERATOR  
CERTIFICATION

I hereby certify that the information contained herein is true and complete to the best of my knowledge and belief, and that this organization either owns a working interest or unleased mineral interest in the land including the proposed bottom hole location or has a right to drill this well at this location pursuant to a contract with an owner of such a mineral or working interest, or to a voluntary pooling agreement or a compulsory pooling order heretofore entered by the division.

*Susan B. Maunder*  
Signature Date 7/27/15

Susan B. Maunder  
Printed Name

Susan.B.Maunder@cop.com  
E-mail Address

<sup>18</sup> SURVEYOR  
CERTIFICATION

I hereby certify that the well location shown on this plat was plotted from field notes of actual surveys made by me or under my supervision, and that the same is true and correct to the best of my belief.

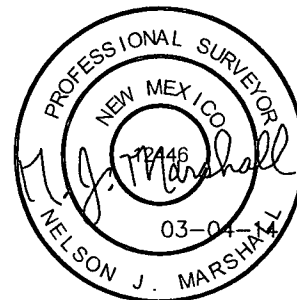
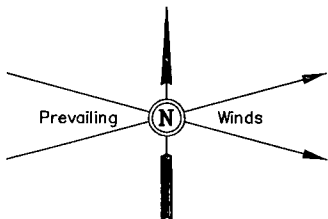
February 14, 2014

Date of Survey  
Signature and Seal of Professional Surveyor:



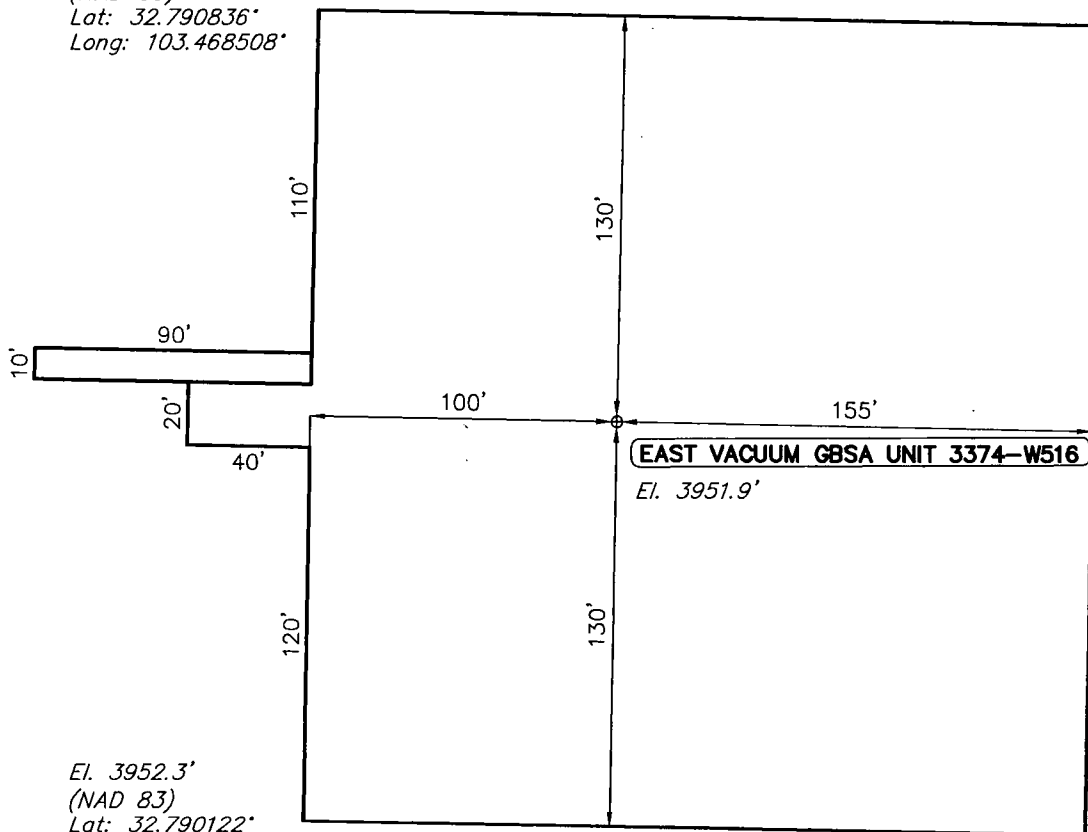
Certificate Number.

AUG 04 2015



El. 3951.4'  
(NAD 83)  
Lat: 32.790836°  
Long: 103.468508°

El. 3951.3'  
(NAD 83)  
Lat: 32.790822°  
Long: 103.467678°



ELEV. UNGRADED GROUND AT LOC. STAKE = 3951.9'

**NOTES:**

- Flare pit is to be located a min. of 100' from the well head.
- Underground utilities shown on this sheet are for visualization purposes only, actual locations to be determined prior to construction.

ConocoPhillips

**ConocoPhillips Company**

**EAST VACUUM GBSA UNIT 3374-W516**  
SECTION 33, T17S, R35E, N.M.P.M.  
2321' FSL 940' FWL

DRAWN: E.C.

SCALE: 1" = 60'

DATE: 02-21-14

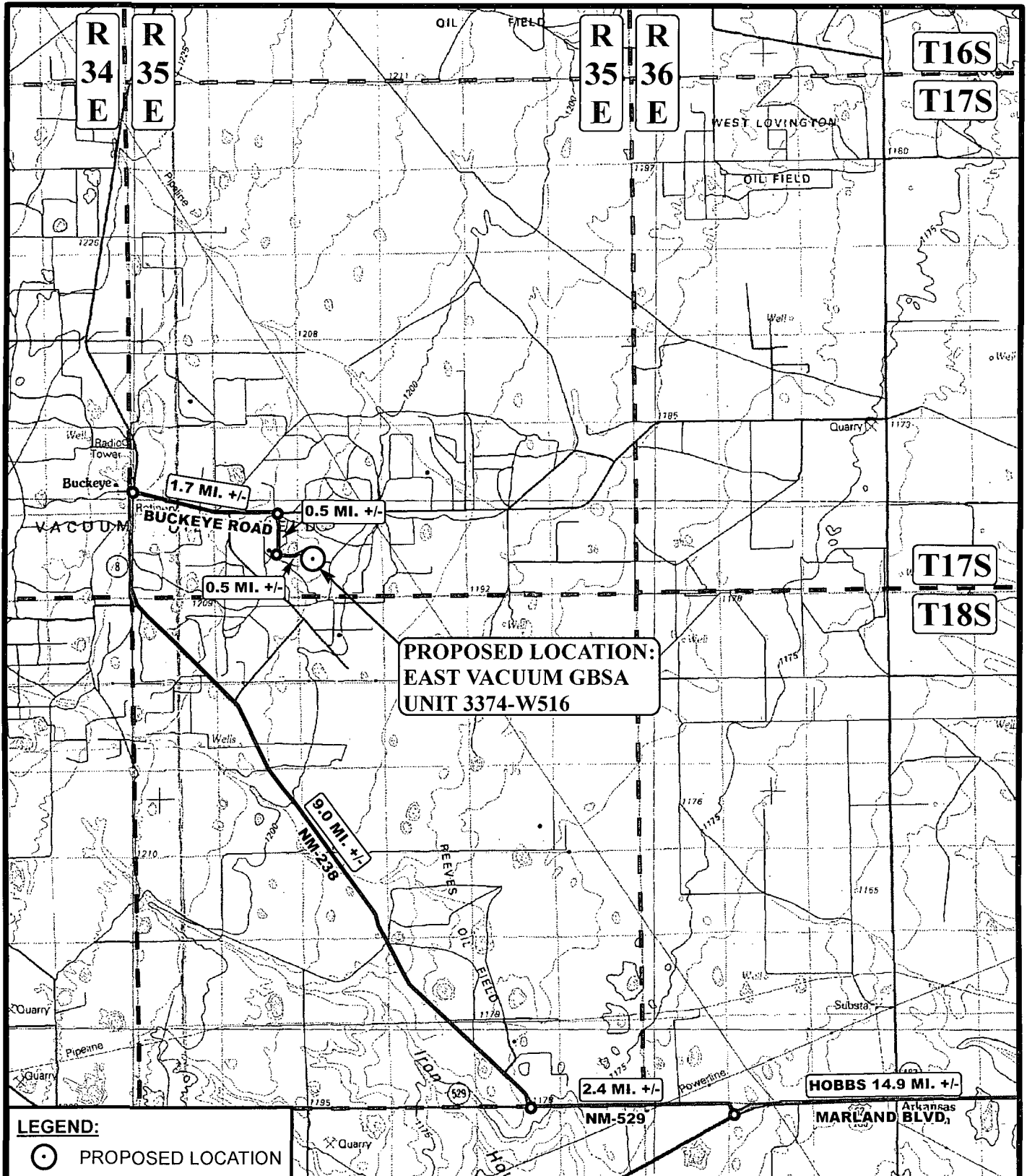
REVISED:

**LOCATION LAYOUT**

**FIGURE #1**



Corporate Office \* 85 South 200 East  
Vernal, UT 84078 \* (435) 789-1017



**LEGEND:**



PROPOSED LOCATION

SCALE: 1:100,000

REVISED:

DRAWN BY: L.S.

DATE DRAWN: 02-26-14

N



ConocoPhillips

ConocoPhillips Company

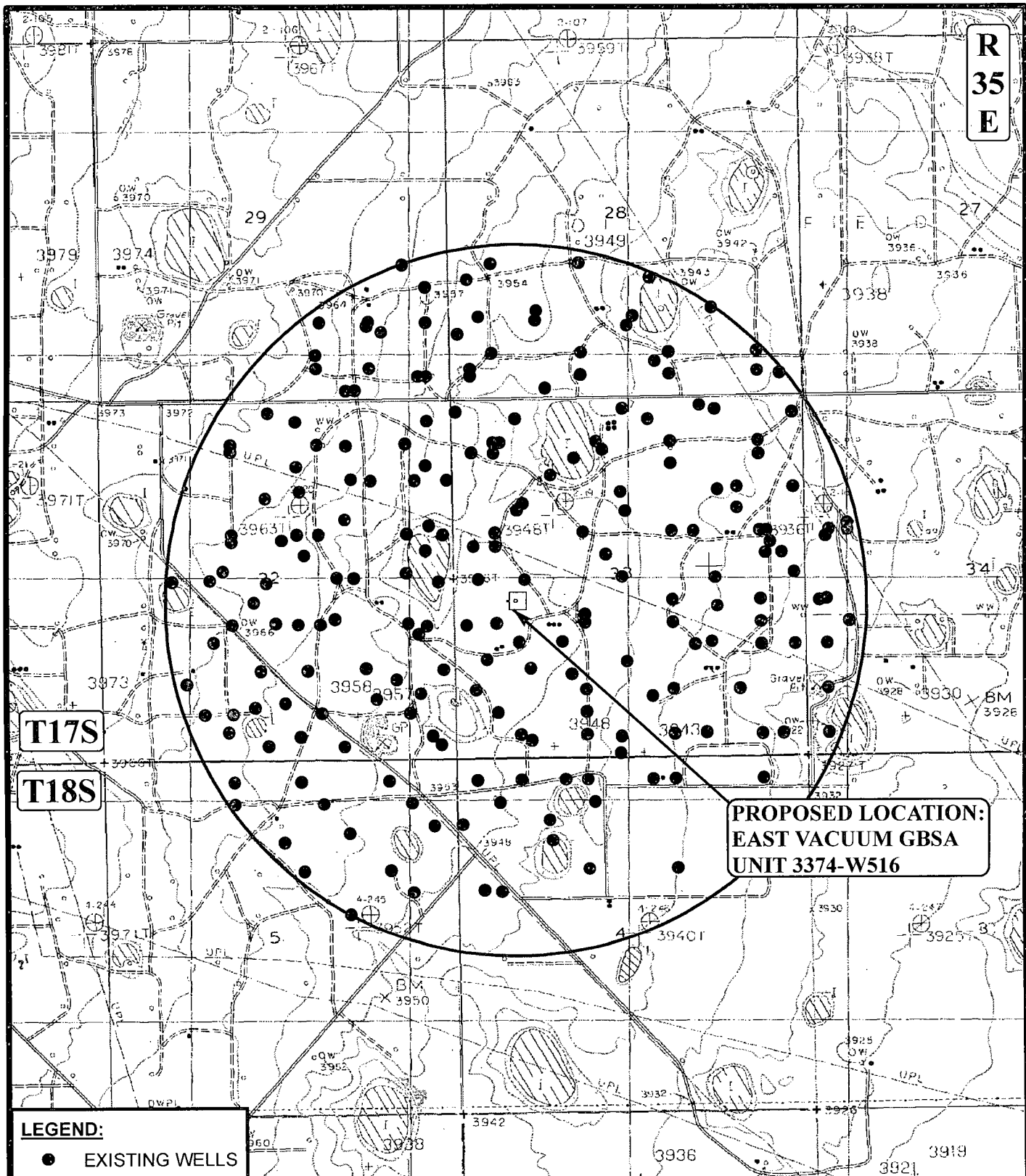
EAST VACUUM GBSA UNIT 3374-W516  
SECTION 33, T17S, R35E, N.M.P.M.  
2321' FSL 940' FWL

ACCESS ROAD MAP

TOPO A



Corporate Office \* 85 South 200 East  
Vernal, UT 84078 \* (435) 789-1017



**LEGEND:**

- EXISTING WELLS

SCALE: 1" = 2000'

REVISED:

DRAWN BY: L.S.

DATE DRAWN: 02-26-14



ConocoPhillips

**ConocoPhillips Company**

**EAST VACUUM GBSA UNIT 3374-W516**  
SECTION 33, T17S, R35E, N.M.P.M.  
2321' FSL 940' FWL

**TOPOGRAPHIC MAP**

**TOPO C**



Corporate Office \* 85 South 200 East  
Vernal, UT 84078 \* (435) 789-1017