

District I
1625 N. French Dr., Hobbs, NM 88240
Phone: (575) 393-6161 Fax: (575) 393-0720
District II
811 S. First St., Artesia, NM 88210
Phone: (575) 748-1283 Fax: (575) 748-9720
District III
1000 Rio Brazos Road, Aztec, NM 87410
Phone: (505) 334-6178 Fax: (505) 334-6170
District IV
1220 S. St. Francis Dr., Santa Fe, NM 87505
Phone: (505) 476-3460 Fax: (505) 476-3462

State of New Mexico
Energy, Minerals & Natural Resources Department
OIL CONSERVATION DIVISION
1220 South St. Francis Dr.
Santa Fe, NM 87505

Form C-102
Revised August 1, 2011
Submit one copy to appropriate
District Office

☐ AMENDED REPORT

WELL LOCATION AND ACREAGE DEDICATION PLAT

¹ API Number 30-025- 42723	² Pool Code 62180	³ Pool Name Vacuum; Grayburg, San Andres
⁴ Property Code 31172	⁵ Property Name EAST VACUUM GBSA UNIT 3328	⁶ Well Number 520W
⁷ OGRID No. 217817	⁸ Operator Name ConocoPhillips Company	⁹ Elevation 3947'

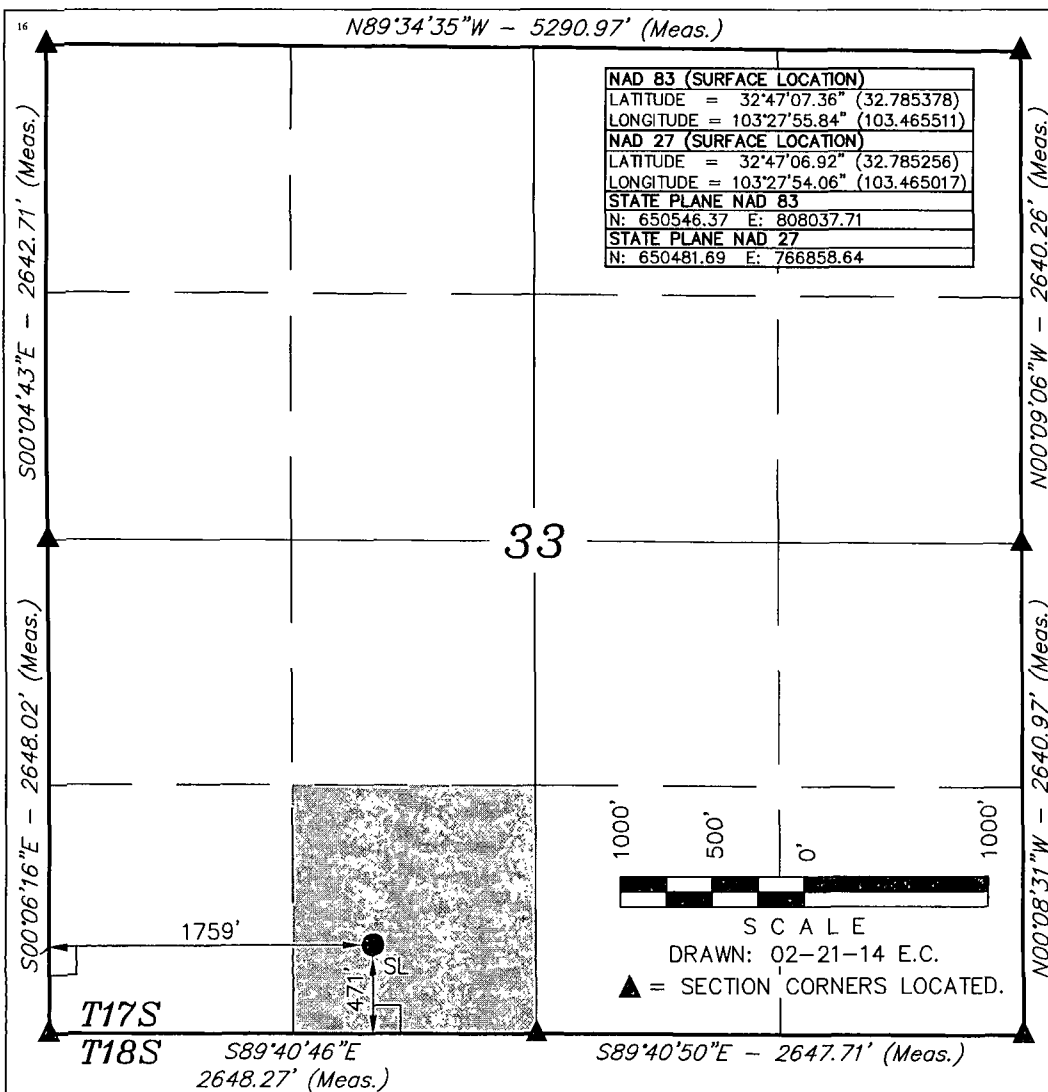
¹⁰ Surface Location

UL or lot no.	Section	Township	Range	Lot Idn	Feet from the	North/South line	Feet from the	East/West line	County
N	33	17S	35E		471	SOUTH	1759	WEST	LEA

¹¹ Bottom Hole Location If Different From Surface

UL or lot no.	Section	Township	Range	Lot Idn	Feet from the	North/South line	Feet from the	East/West line	County
¹² Dedicated Acres 40	¹³ Joint or Infill	¹⁴ Consolidation Code	¹⁵ Order No. WFX-945						

No allowable will be assigned to this completion until all interests have been consolidated or a non-standard unit has been approved by the division.



¹⁷ OPERATOR
CERTIFICATION

I hereby certify that the information contained herein is true and complete to the best of my knowledge and belief, and that this organization either owns a working interest or unleased mineral interest in the land including the proposed bottom hole location or has a right to drill this well at this location pursuant to a contract with an owner of such a mineral or working interest, or to a voluntary pooling agreement or a compulsory pooling order heretofore entered by the division.

Susan B. Maunder
Signature Date 7/27/15

Susan B. Maunder
Printed Name

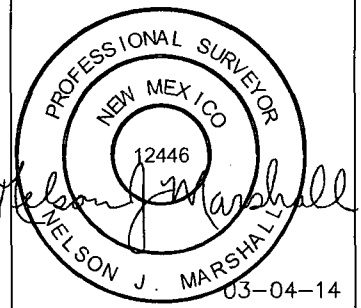
Susan.B.Maunder@cop.com
E-mail Address

¹⁸ SURVEYOR
CERTIFICATION

I hereby certify that the well location shown on this plat was plotted from field notes of actual surveys made by me or under my supervision, and that the same is true and correct to the best of my belief.

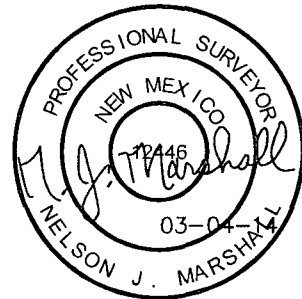
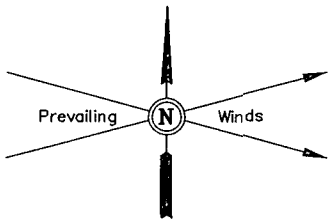
February 13, 2014

Date of Survey
Signature and Seal of Professional Surveyor:



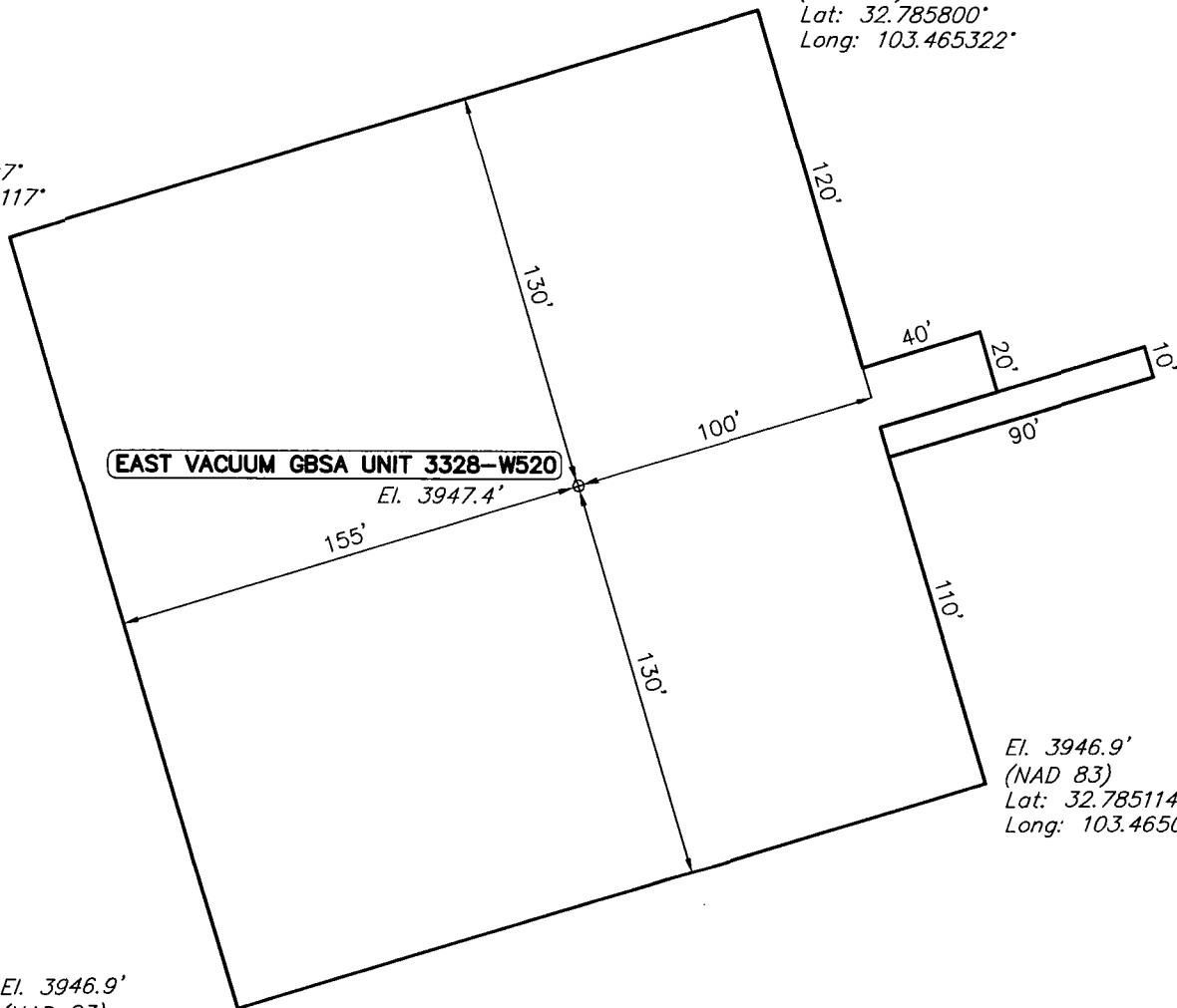
Certificate Number:

AUG 04 2015



El. 3948.4'
(NAD 83)
Lat: 32.785597°
Long: 103.466117°

El. 3947.3'
(NAD 83)
Lat: 32.785800°
Long: 103.465322°



El. 3946.9'
(NAD 83)
Lat: 32.785114°
Long: 103.465078°

El. 3946.9'
(NAD 83)
Lat: 32.784914°
Long: 103.465872°

ELEV. UNGRADED GROUND AT LOC. STAKE = 3947.4'

NOTES:

- Flare pit is to be located a min. of 100' from the well head.
- Underground utilities shown on this sheet are for visualization purposes only, actual locations to be determined prior to construction.

ConocoPhillips

ConocoPhillips Company

EAST VACUUM GBSA UNIT 3328-W520
SECTION 33, T17S, R35E, N.M.P.M.
471' FSL 1759' FWL

DRAWN: E.C.

SCALE: 1" = 60'

DATE: 02-21-14

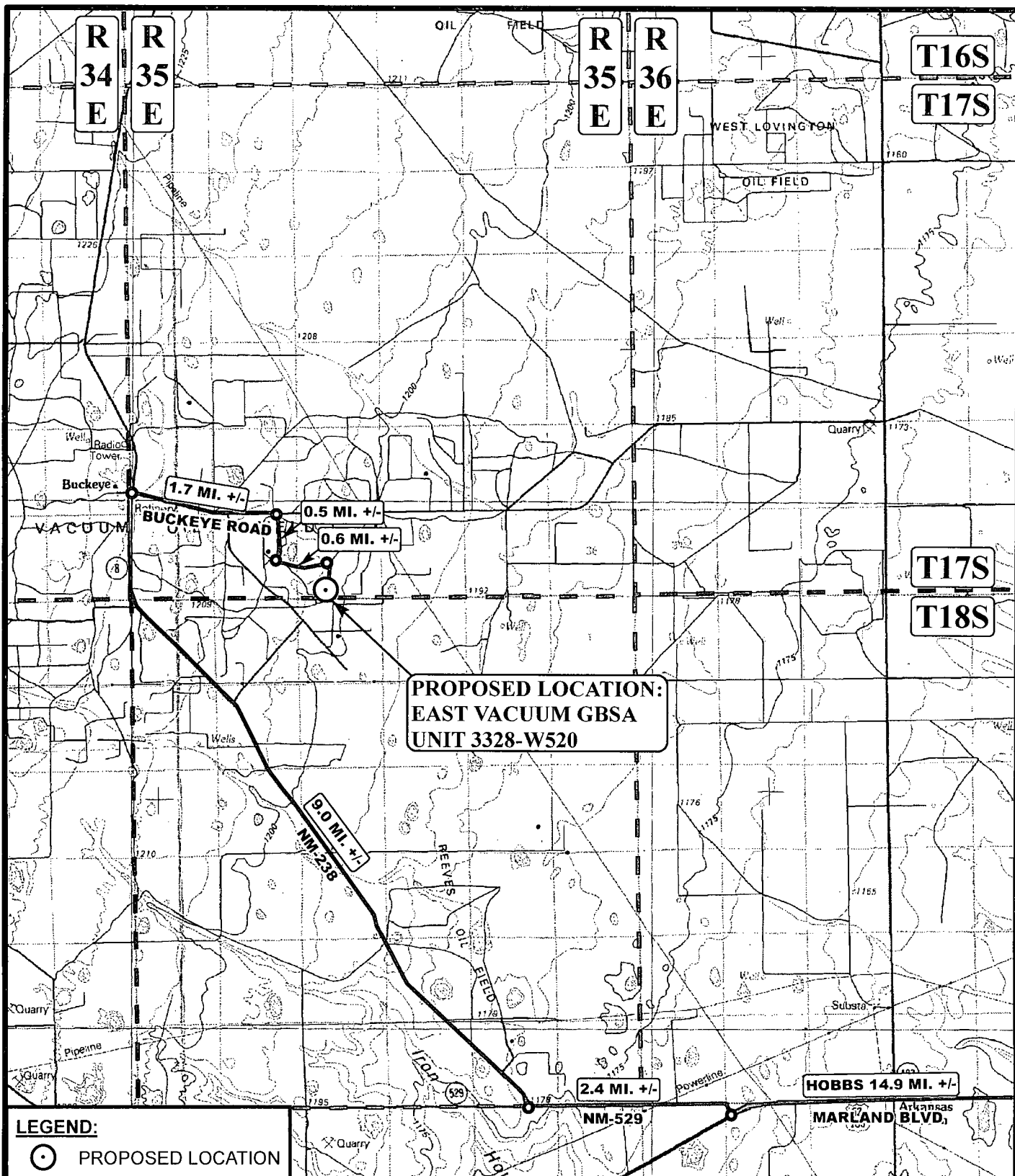
REVISED:



Corporate Office * 85 South 200 East
Vernal, UT 84078 * (435) 789-1017

LOCATION LAYOUT

FIGURE #1



SCALE: 1:100,000

REVISED:

DRAWN BY: L.S.

DATE DRAWN: 02-26-14



Corporate Office * 85 South 200 East
Vernal, UT 84078 * (435) 789-1017



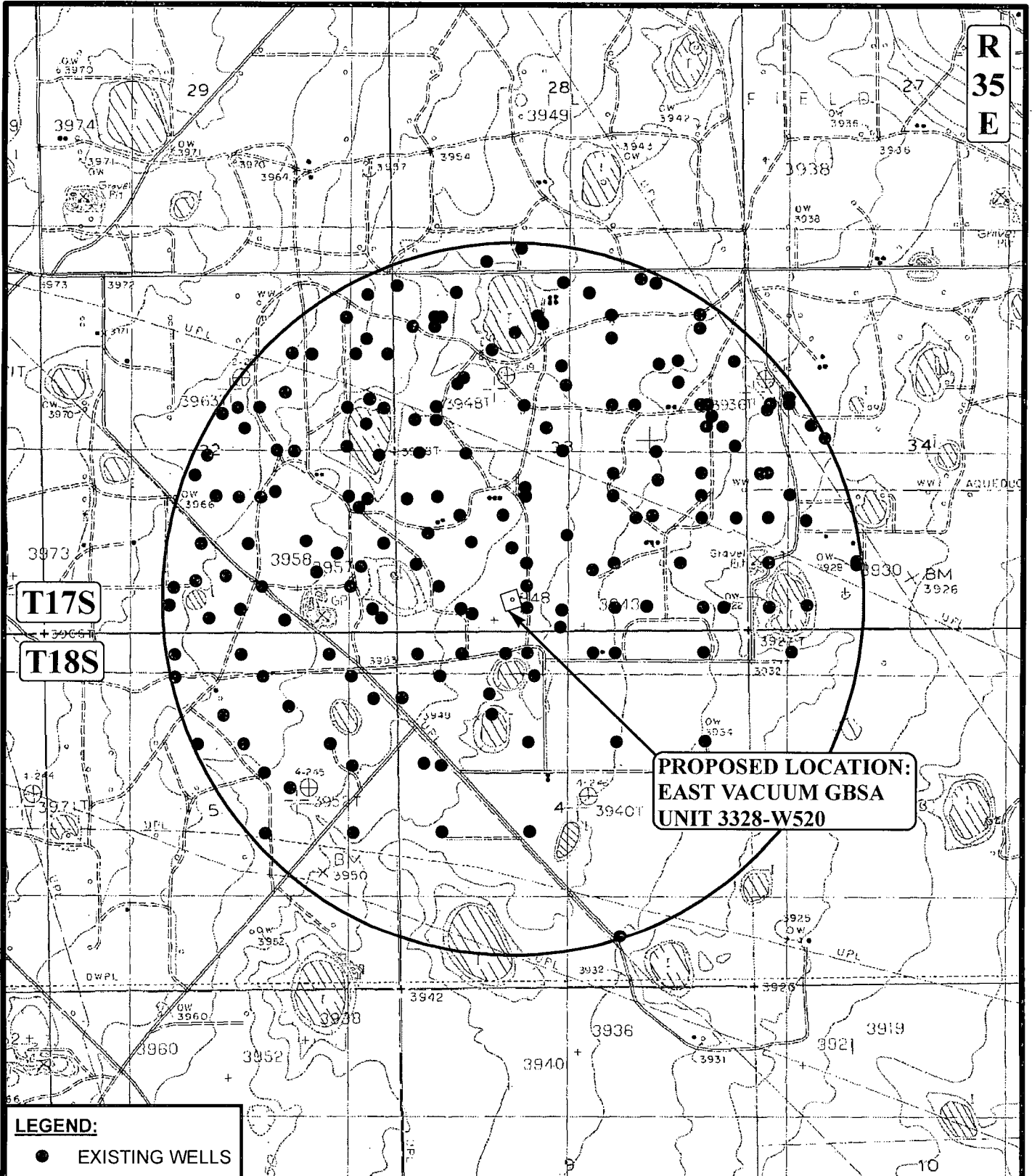
ConocoPhillips

ConocoPhillips Company

**EAST VACUUM GBSA UNIT 3328-W520
SECTION 33, T17S, R35E, N.M.P.M.
471' FSL 1759' FWL**

ACCESS ROAD MAP

TOPO A



LEGEND:

● EXISTING WELLS

SCALE: 1" = 2000'

DRAWN BY: L.S.

DATE DRAWN: 02-26-14



Corporate Office * 85 South 200 East
Vernal, UT 84078 * (435) 789-1017



ConocoPhillips

ConocoPhillips Company

EAST VACUUM GBSA UNIT 3328-W520
SECTION 33, T17S, R35E, N.M.P.M.
471' FSL 1759' FWL

TOPOGRAPHIC MAP

TOPO C