

Submit 1 Copy To Appropriate District
Office
District I
1625 N. French Dr., Hobbs, NM 88240
District II
1301 W. Grand Ave., Artesia, NM 88210
District III
1000 Rio Brazos Rd., Aztec, NM 87410
District IV
1220 S. St. Francis Dr., Santa Fe, NM
87505

State of New Mexico
Energy, Minerals and Natural Resources
CONSERVATION DIVISION
1220 South St. Francis Dr.
Santa Fe, NM 87505

Form C-103
October 13, 2009

SUNDRY NOTICES AND REPORTS ON WELLS (DO NOT USE THIS FORM FOR PROPOSALS TO DRILL OR TO DEEPEN OR PLUG BACK TO A DIFFERENT RESERVOIR. USE "APPLICATION FOR PERMIT" (FORM C-101) FOR SUCH PROPOSALS.)		WELL API NO. 30-025-40420
1. Type of Well: Oil Well <input type="checkbox"/> Gas Well <input type="checkbox"/> Other Acid Gas Injection <input checked="" type="checkbox"/>		5. Indicate Type of Lease STATE <input type="checkbox"/> FEE <input type="checkbox"/>
2. Name of Operator AKA Energy Group LLC		6. State Oil & Gas Lease No.
3. Address of Operator 65 Mercado Street, Suite 250, Durango, CO 81301		7. Lease Name or Unit Agreement Name Maljamar AGI
4. Well Location Unit Letter <u>O</u> : 130 feet from the South line and 1813 feet from the East line Section 21 Township 17 S Range 32E NMPM County Lea		8. Well Number #1
11. Elevation (Show whether DR, RKB, RT, GR, etc.)		9. OGRID Number
		10. Pool name or Wildcat AGI: Lower Leonard/Wolfcamp

12. Check Appropriate Box to Indicate Nature of Notice, Report or Other Data

NOTICE OF INTENTION TO:		SUBSEQUENT REPORT OF:	
PERFORM REMEDIAL WORK <input type="checkbox"/>	PLUG AND ABANDON <input type="checkbox"/>	REMEDIAL WORK <input type="checkbox"/>	ALTERING CASING <input type="checkbox"/>
TEMPORARILY ABANDON <input type="checkbox"/>	CHANGE PLANS <input type="checkbox"/>	COMMENCE DRILLING OPNS. <input type="checkbox"/>	P AND A <input type="checkbox"/>
PULL OR ALTER CASING <input type="checkbox"/>	MULTIPLE COMPL <input type="checkbox"/>	CASING/CEMENT JOB <input type="checkbox"/>	
DOWNHOLE COMMINGLE <input type="checkbox"/>			
OTHER		OTHER: <input checked="" type="checkbox"/> Annual MIT and Braden head test	

13. Describe proposed or completed operations. (Clearly state all pertinent details, and give pertinent dates, including estimated date of starting any proposed work). SEE RULE 19.15.7.14 NMAC. For Multiple Completions: Attach wellbore diagram of proposed completion or recompletion.

The MIT and Braden head Test were conducted on Wednesday, August 12, 2015 at 10 am. In order to conduct the MIT, the annular space pressure was adjusted to 600 psig by adding a small amount of diesel immediately before the test.

- Initially the starting injection pressure and the annular space pressure between casing and tubing was 400 psig
- Placed chart on annular space and began recording annular space pressure.
- Bled off annular fluid (diesel) to bring observed annular space pressure to zero psig.
- Slowly raised annular pressure by introducing diesel to the annulus to bring pressure to 600 psig.
- When annulus pressure reached 600 psig closed valves to pumping truck and recorded annular space pressure for 40 minutes.
- Recorded tubing injection pressure and temperature during charting: pressure was 2241 psig at start and 2260 psig at end; temperature was 97° F at start and 99° F at end.
- After 40 minutes bled off annular fluid to reduce observed pressure to zero psig.
- Stopped recording TEST COMPLETE.
- Restored annular pressure to normal psig (approximately 300 psig).

The Braden head Test was conducted concurrent with the MIT.

- Closed valve to Braden head casing the day before the test.
- At the start of the test opened the Braden head casing valve and recorded zero psig.
- Stop recording after 30 minutes.
- Pressure remained at zero psig throughout the test.

Geolex, Inc. and Pate Trucking conducted the test. After meeting at the AKA Frontier Maljamar AGI #1 facility near Maljamar, NM we held a safety meeting and obtained the required work permits.

I hereby certify that the information above is true and complete to the best of my knowledge and belief.

AUG 13 2015

SIGNATURE



TITLE: Consultant to AKA Energy Group LLC

DATE: 8/12/2015

Type or print name

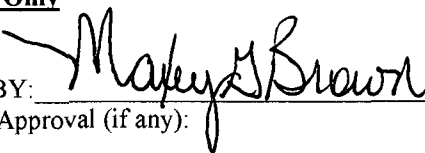
Michael W. Selke, RG

E-mail address: mselke@geolex.com

PHONE: 505-842-8000

For State Use Only

APPROVED BY:



TITLE

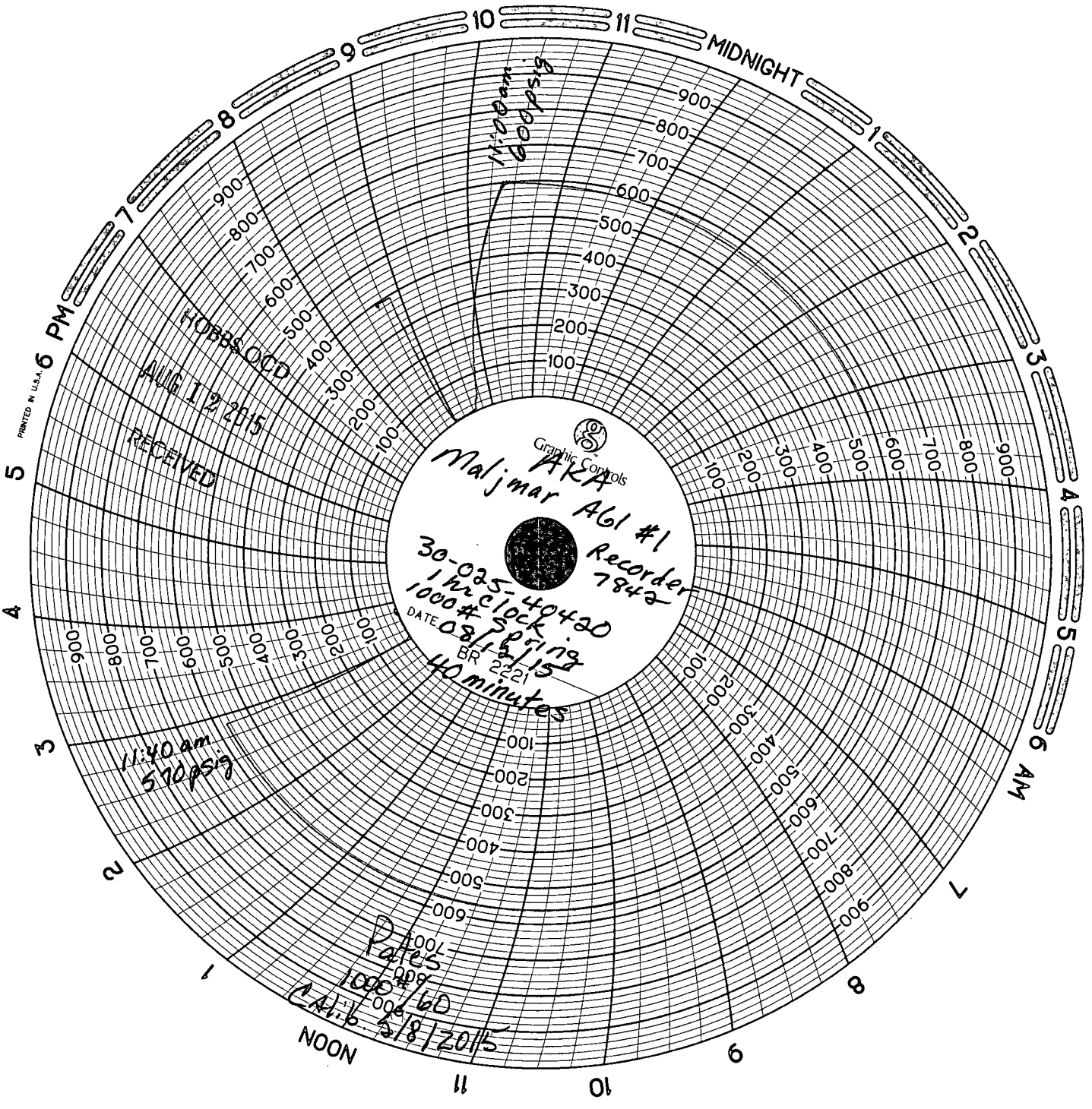
Dist. Supervisor

DATE

8/12/2015

Conditions of Approval (if any):

PRINTED IN U.S.A.



Graphic Controls

Maljmar AKA
AGI #1
Recorder
7842

30-025-40420
1 hr clock
1000# spring
DATE 08/18/15
BR 2221
40 minutes

RECEIVED
AUG 12 2015
HOBBS OOD

11:40 am
570 psig

Pates
1000# spring
CAL: 6
5/8/20/15
NOON

American Valve & Meter, Inc.
 1113 W. BROADWAY
 P.O. BOX 166
 HOBBS, NM 88240

TO: Gate Truck DATE: 05-08-75

This is to certify that:

I, Bud Collins, Technician for American Valve & Meter,

Inc., has checked the calibration of the following instrument.

8" pressure recorder Serial No: 7842

at these points.

Pressure 0-1000 #

Temperature _____

Test	Found	Left	Test	Found	Left
1	500	5	1	500	5
200	200	200	200	200	200
1000	1000	1000	1000	1000	1000
200	200	200	200	200	200
1	1	1	1	1	1

Remarks:

Signature Bud Collins