

7/29/2015

NM Ex State #2(PlugBack Procedure)

Prior to MIRU: Test anchors

Procedure:

1. MIRU pulling unit
2. Confirm well is on vacuum
3. ND WH
4. MU 1 jnt 2-7/8" to the 2-7/8" Duoline in well then unseat Pkr and POOH
5. Have Duoline tech assist with pulling tubing OOH
6. SD for night

7. MU WH
8. NU BOP and Lubricator to WH and pick up 5-1/2" bridge plug
9. Function test BOP to 1000psi
10. RIH to Plug depth 10,974' and set BP
11. POOH and dump 5 sks sand on plug
12. RIH with perf guns .4" dia 2 spf 60 deg phase
13. Refer to logs for exact depth of shots from 10,440' – 10,464' and shoot perfs
14. POOH RDMO WL
15. Shut in well and record pressure gauge
16. SD for night

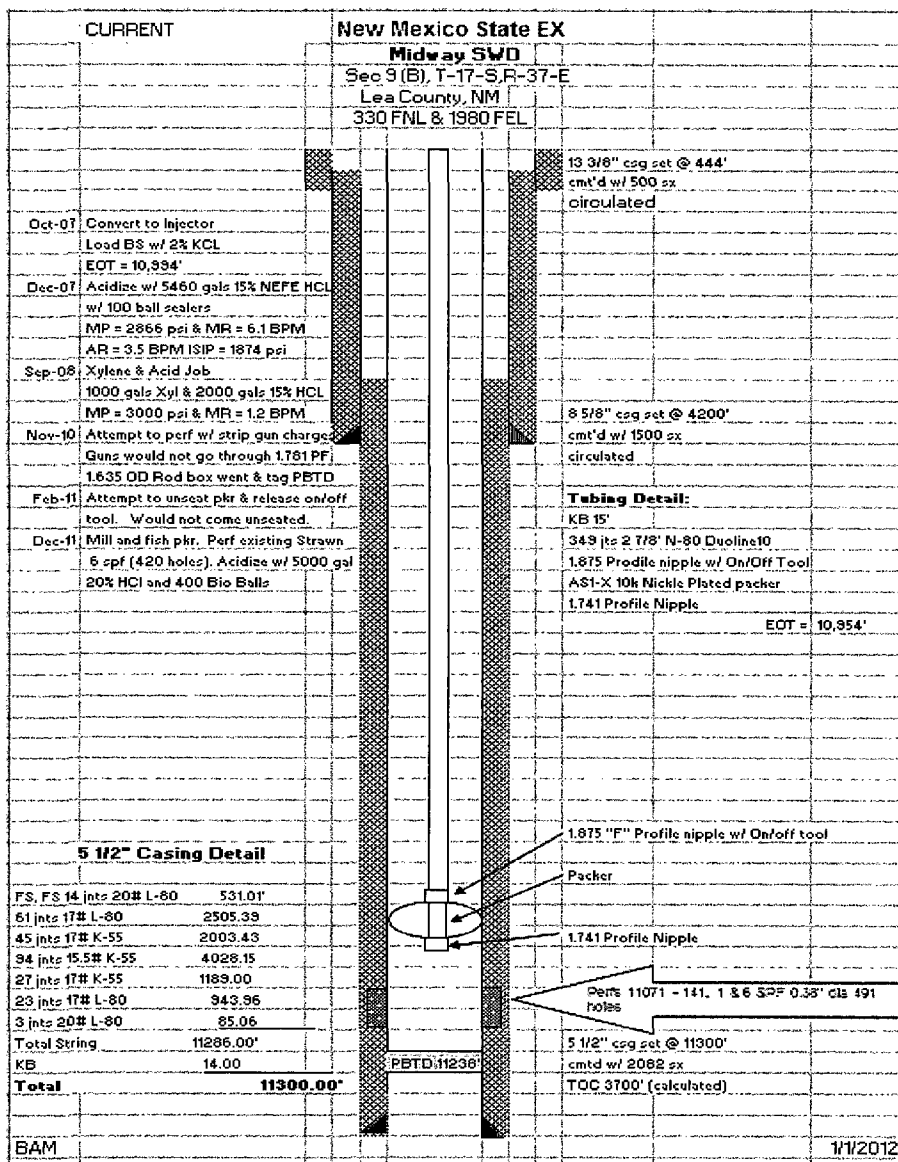
17. Check pressure gauge on well and document in report
18. Rig up BOP to WH for Pulling Unit
19. Function Test BOP to 1000psi
20. PU 5-1/2" Pkr with 3-1/2" tbg and TIH to Pkr depth at 10,340'
21. Set Pkr at 10,340'
22. RU acid blender pump trucks and manifold to WH
23. Test lines and hold safety meeting
24. Pump acid job; record WH pressure and rate for job along with ISIP, 5, 10 ,15 min
25. Shut in well and RDMO acid Equip
26. SDN

AUG 20 2015

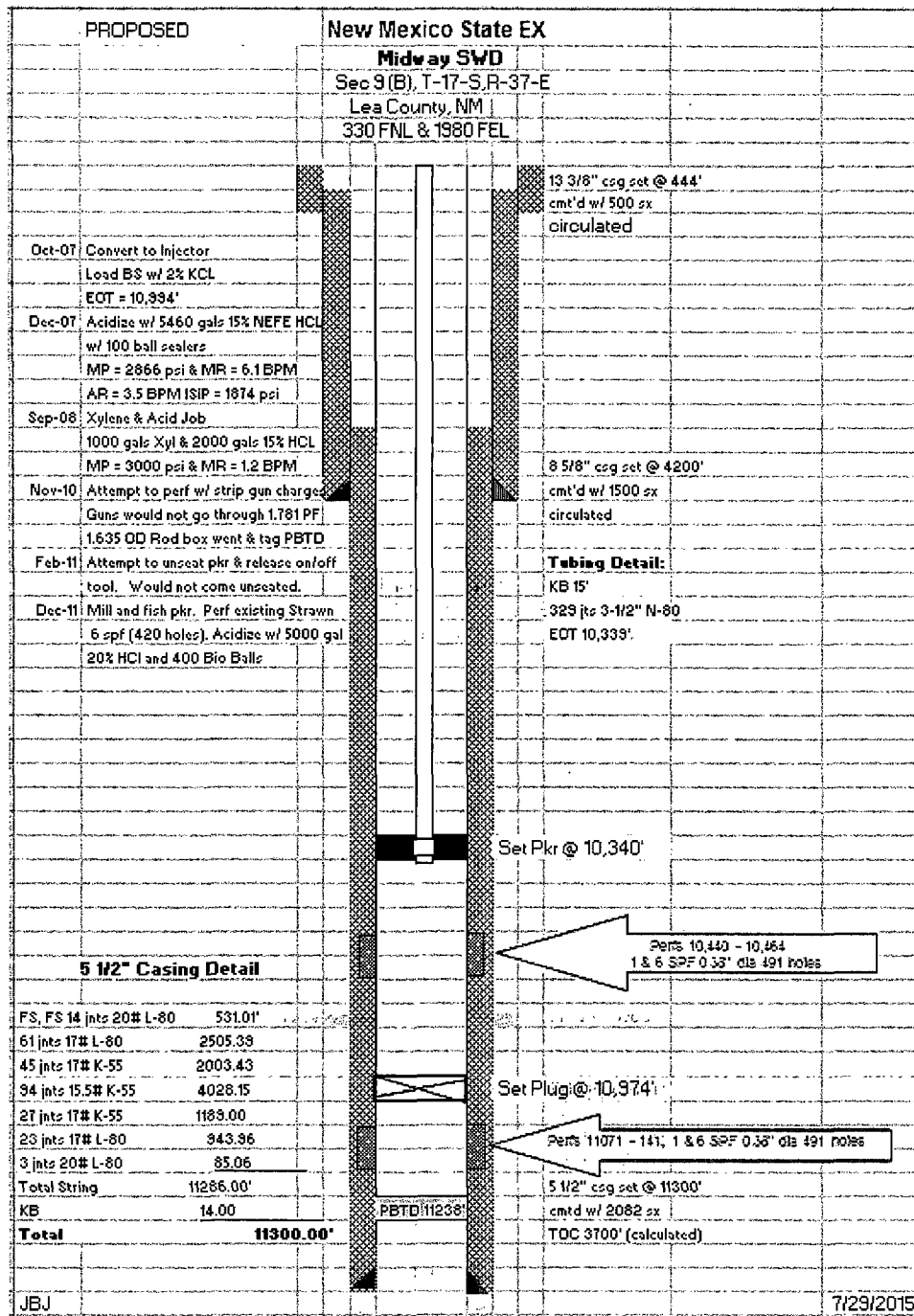
Procedure Continued:

27. Flow well back to flowback tanks until well dies, haul off fluid and observe for oil cut
28. MU 1 jnt 3-1/2" tbg to tbg in well and unseat packer
29. POOH and laydown 3-1/2" String
30. PU Mud anchor, Mother Hubbard, SN, TAC and RIH with 2-7/8" production tbg
31. Set TAC at 10,410'
32. PU pump and extra SR, Alan Gower will provide rods.
33. Have tech to respace pump
34. Put well on production
35. Release Rig

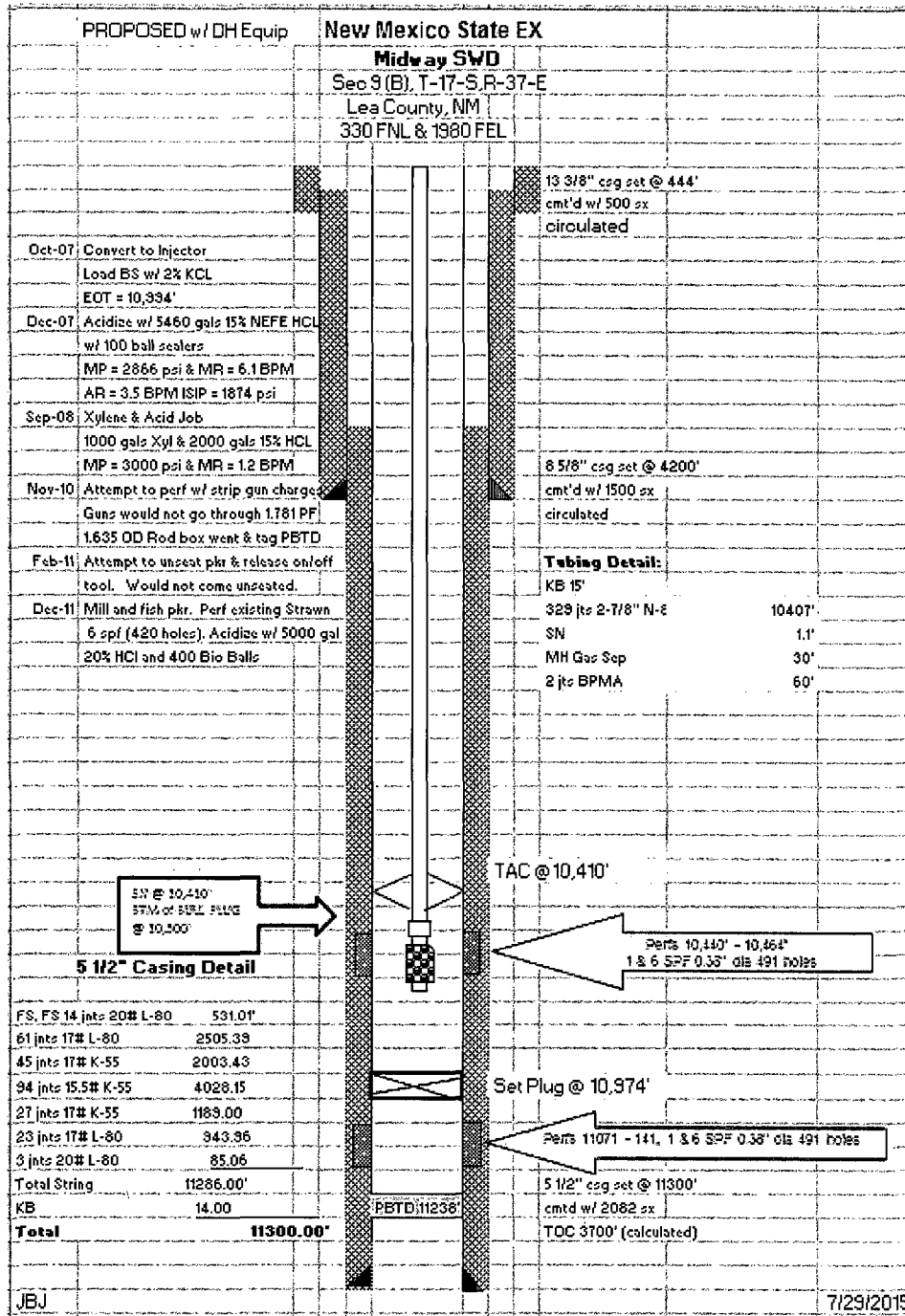
Current Wellbore Diagram



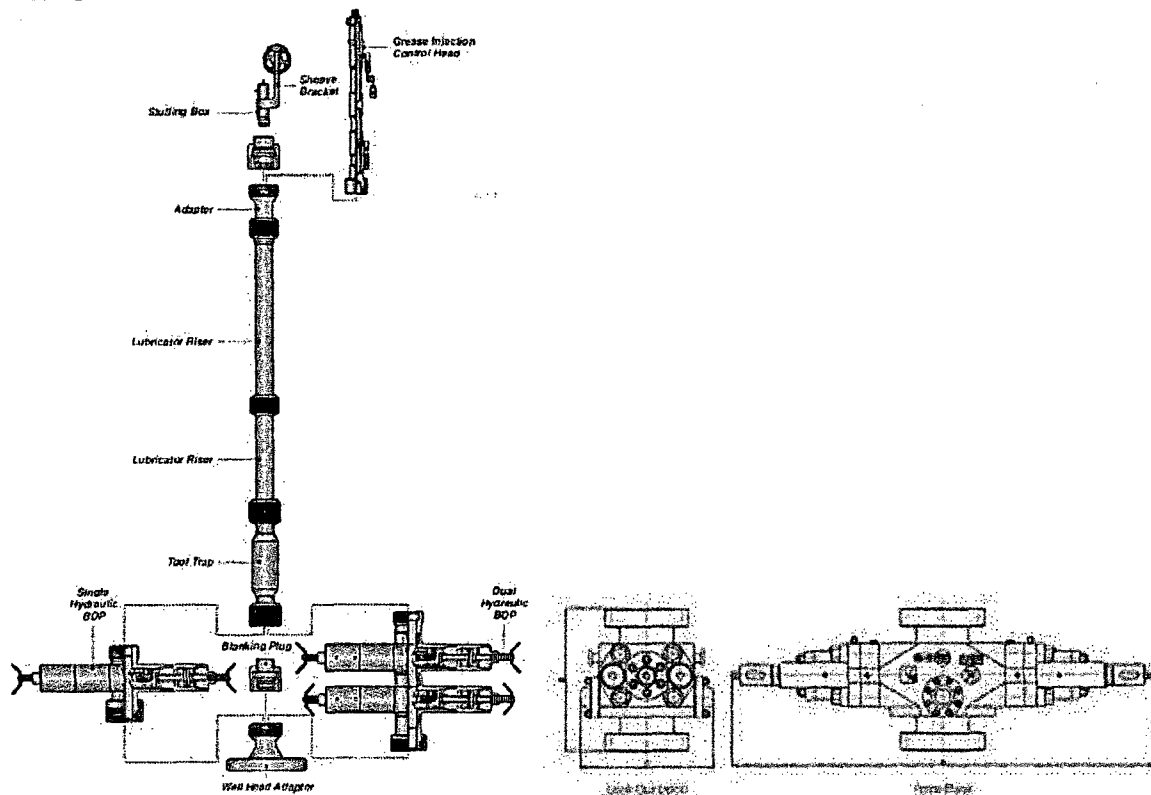
Proposed Wellbore diagram for Completion



Proposed Wellbore diagram for Production



Proposed Blowout Prevention Program



A 3000 psi BOP nipped up to the 5-1/2" casing will be utilized while perforating and again while running the completion string in the hole. All equipment will be tested to 1000psi before perforating and before opening the well head to run the completion string. The test will be logged in the report.