

Do not use this form for proposals to drill or to re-enter an abandoned well. Use form 3160-3 (APD) for such proposals. AUG 17 2015

SUBMIT IN TRIPLICATE - Other instructions on reverse side.

RECEIVED

12. CHECK APPROPRIATE BOX(ES) TO INDICATE NATURE OF NOTICE, REPORT, OR OTHER DATA

SEE ATTACHED FOR
CONDITIONS OF APPROVAL

THIS SPACE FOR FEDERAL OR STATE OFFICE USE

Title 18 U.S.C. Section 1001 and Title 43 U.S.C. Section 1212, make it a crime for any person knowingly and willfully to make to any department or agency of the United States any false, fictitious or fraudulent statements or representations as to any matter within its jurisdiction.

**** BLM REVISED ** BLM REVISED ** BLM REVISED ** BLM REVISED ** BLM REVISED ****

WJB/OC 8/19/2015

SEE ATTACHED FOR
CONDITIONS OF APPROVAL AUG 20 2015

Fill Line

Flowline

3000# (3M)
BOP

SRR & A

Annular Preventer

Pipe Rams

Blind Rams

2" Minimum Kill Line

Kill Line

1 Kill Line Valve
(Minimum)

Drilling Spool

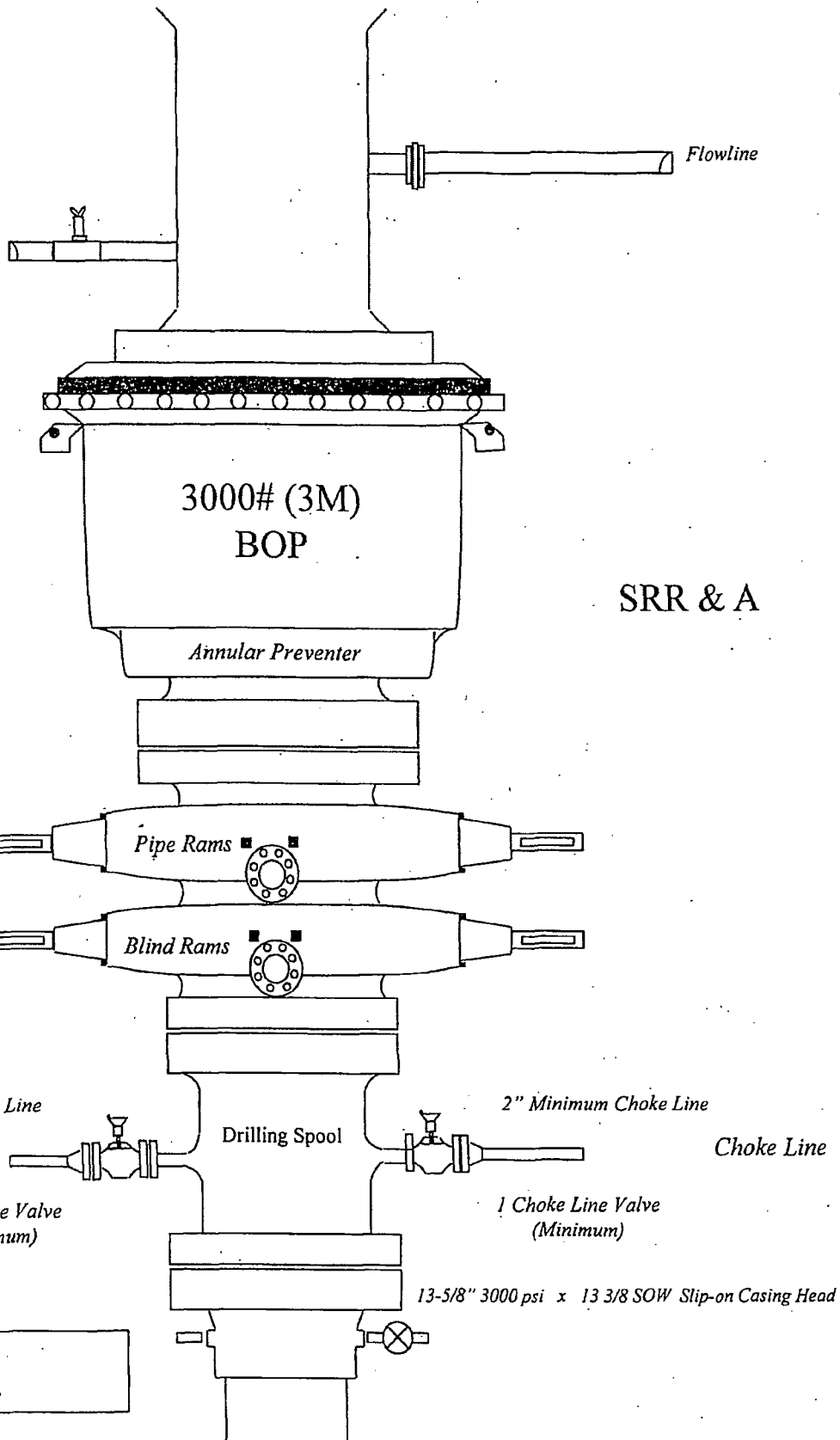
2" Minimum Choke Line

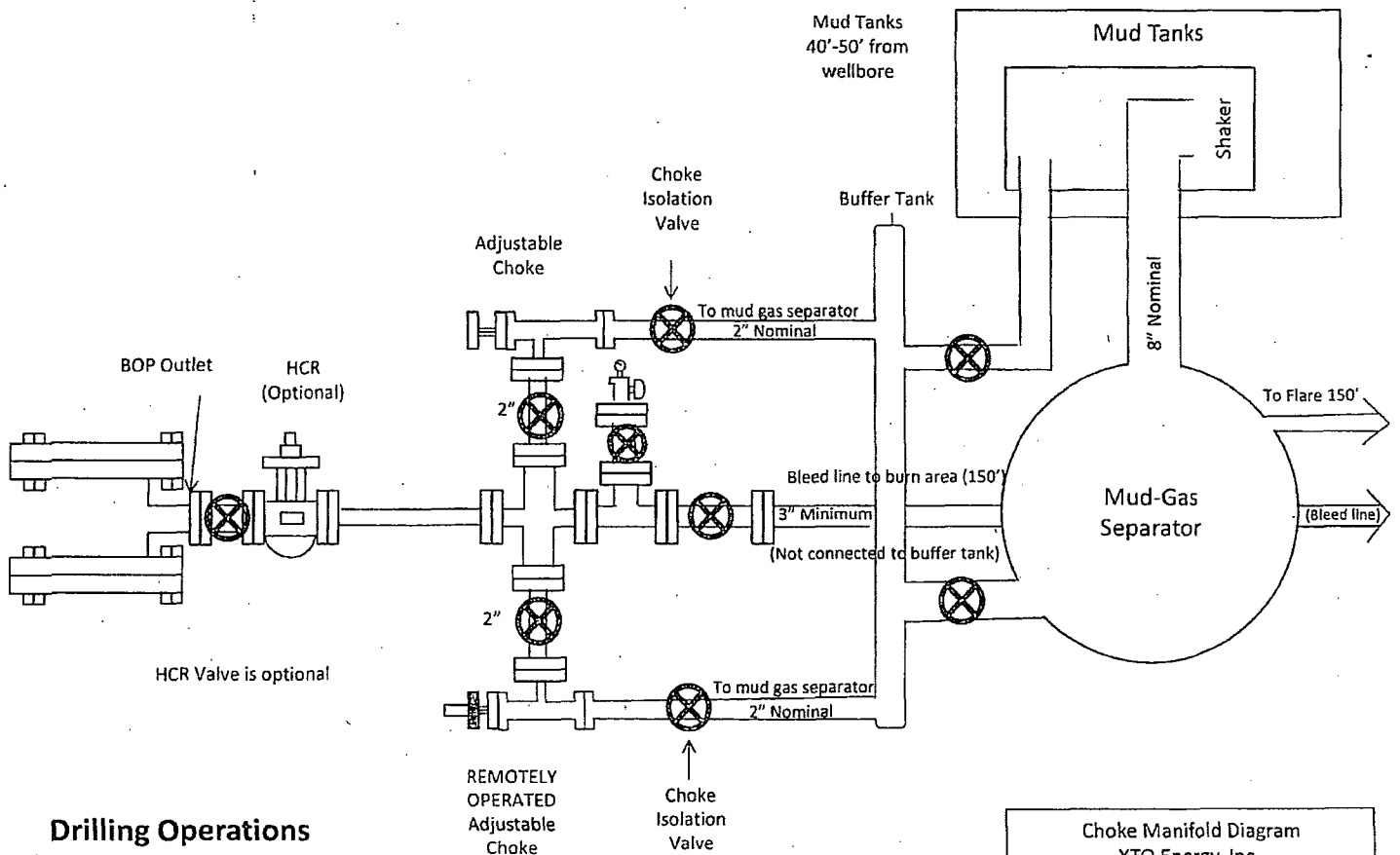
Choke Line

1 Choke Line Valve
(Minimum)

13-5/8" 3000 psi x 13 3/8 SOW Slip-on Casing Head

3000# BOP
XTO Energy, Inc.





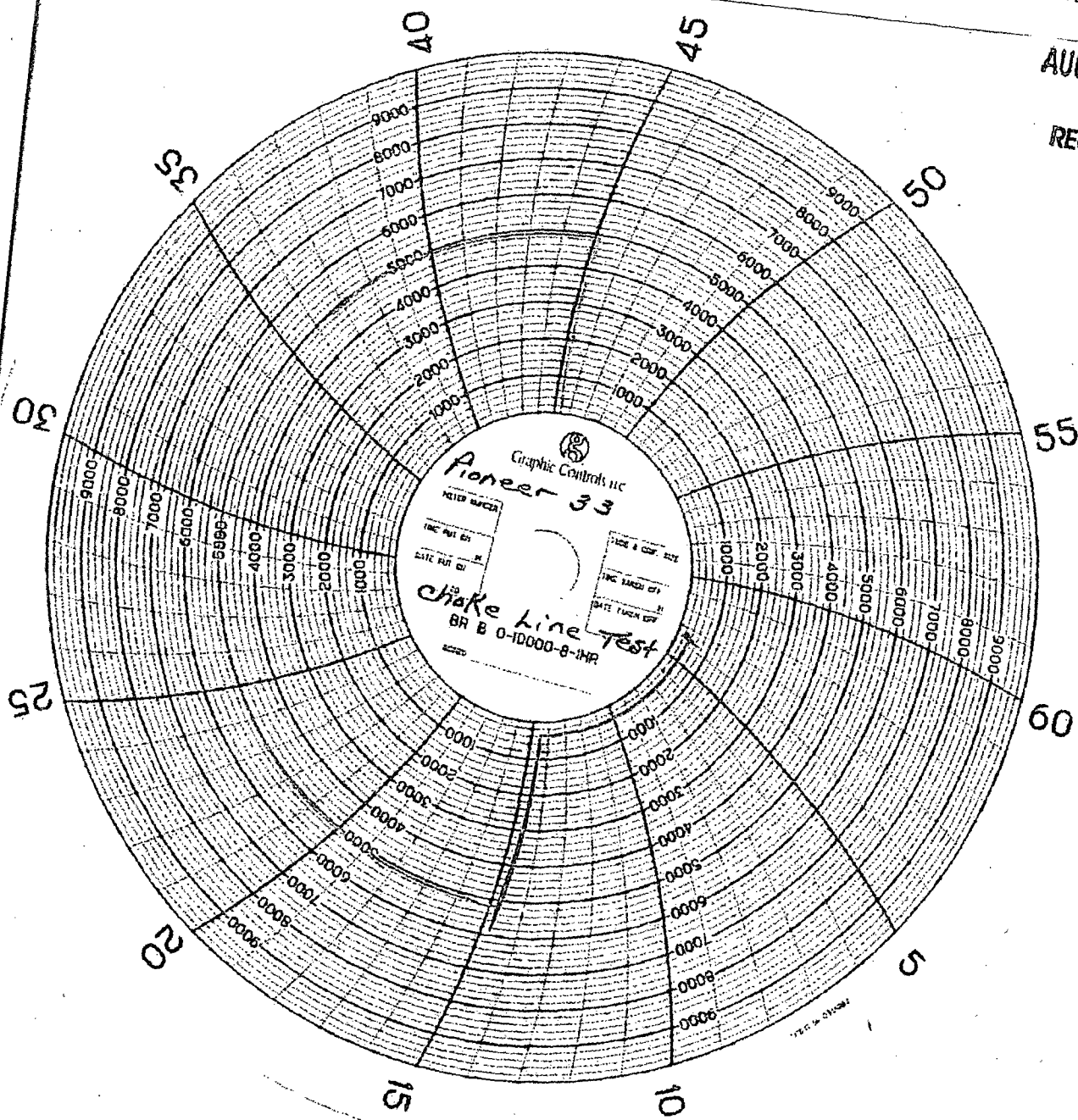
Drilling Operations
Choke Manifold
3M Service

Choke Manifold Diagram
 XTO Energy, Inc..

HOBBS OCD

AUG 17 2015

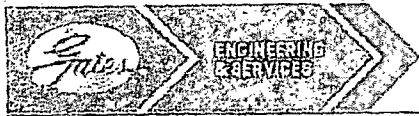
RECEIVED



HOBBS OCD

AUG 17 2015

RECEIVED



GATES E & S NORTH AMERICA, INC
DU-TEX
134 44TH STREET
CORPUS CHRISTI, TEXAS 78405

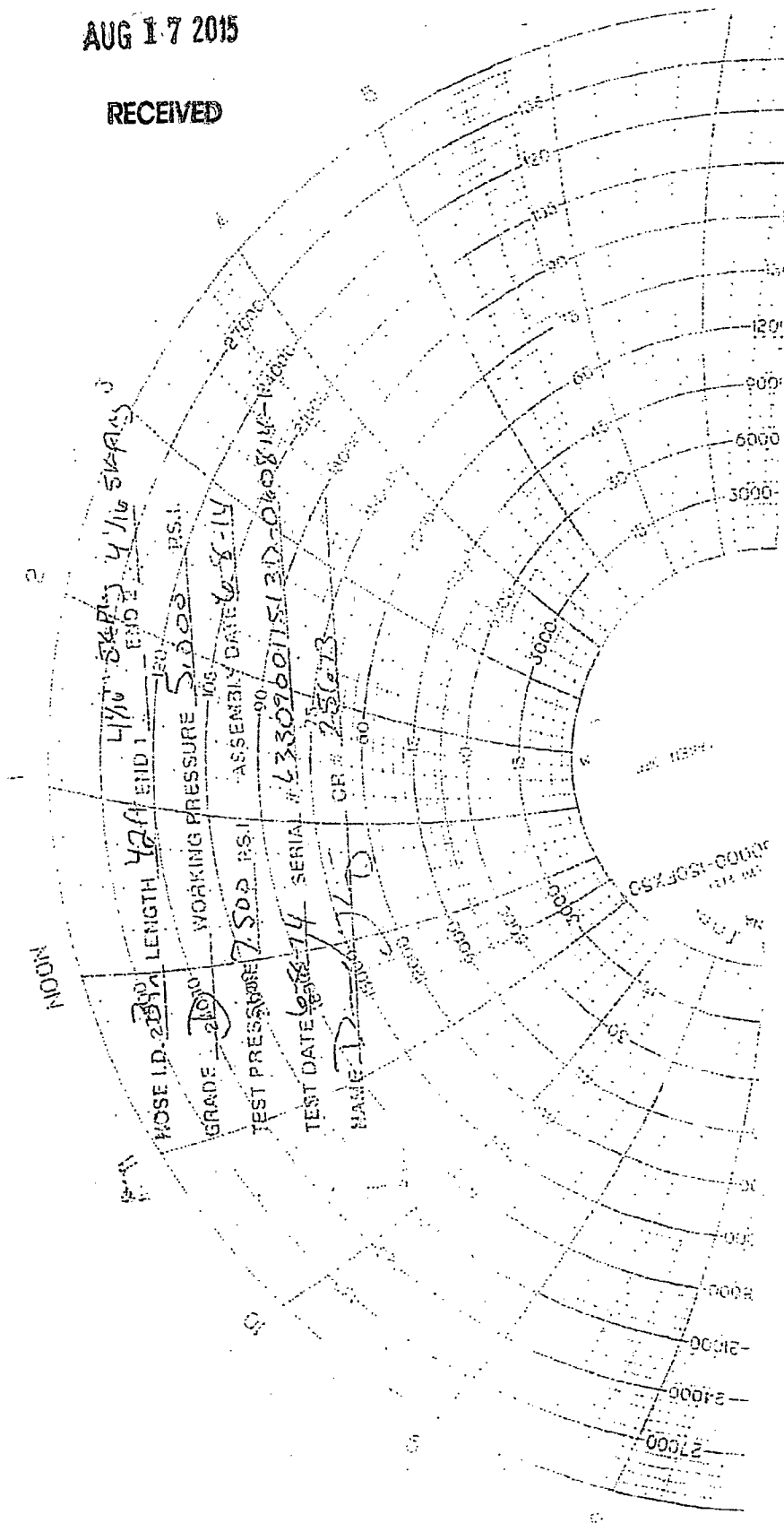
PHONE: 361-887-9807
FAX: 361-887-0812
EMAIL: crpe&s@gates.com
WEB: www.gates.com

GRADE D PRESSURE TEST CERTIFICATE

Customer :	AUSTIN DISTRIBUTING	Test Date:	6/8/2014
Customer Ref. :	PENDING	Hose Serial No.:	D-060814-1
Invoice No. :	201709	Created By:	MORHA
Product Description:	FD3.0-12.0R41/16.5KFLGE/E LE		
End Fitting 1 :	4 1/16 in.5K FLG	End Fitting 2 :	4 1/16 in.5K FLG
Gates Part No. :	4774-6001	Assembly Code :	L33090011513D-060814-1
Working Pressure :	5,000 PSI	Test Pressure :	7,500 PSI

Gates E & S North America, Inc. certifies that the following hose assembly has been tested to the Gates Oilfield Roughneck Agreement/Specification requirements and passed the 15 minute hydrostatic test per API Spec 7K/Q1, Fifth Edition, June 2010, Test pressure 9.6.7 and per Table 9 to 7,500 psi in accordance with this product number. Hose burst pressure 9.6.7.2 exceeds the minimum of 2.5 times the working pressure per Table 9.

Quality:	QUALITY	Technical Supervisor :	PRODUCTION
Date :	6/8/2014	Date :	6/8/2014
Signature :	<i>[Signature]</i>	Signature :	<i>[Signature]</i>



AUG 17 2015

CONDITIONS OF APPROVAL**RECEIVED**

Sundry dated 8/12/2015

OPERATOR'S NAME:	XTO Energy Inc
LEASE NO.:	NM26395
WELL NAME & NO.:	3H-Perla Negra Fed Com
SURFACE HOLE FOOTAGE:	200'/S & 2000'/E
BOTTOM HOLE FOOTAGE:	200'/N & 1890'/E
LOCATION:	Sec. 24, T. 19 S., R. 34 E.
COUNTY:	Lea County, New Mexico

Original COA still applies with the following changes:**A. PRESSURE CONTROL**

1. All blowout preventer (BOP) and related equipment (BOPE) shall comply with well control requirements as described in Onshore Oil and Gas Order No. 2 and API RP 53 Sec. 17.
2. Variance approved to use flex line from BOP to choke manifold. Check condition of flexible line from BOP to choke manifold, replace if exterior is damaged or if line fails test. Line to be as straight as possible with no hard bends and is to be anchored according to Manufacturer's requirements. The flexible hose can be exchanged with a hose of equal size and equal or greater pressure rating. **Anchor requirements, specification sheet and hydrostatic pressure test certification matching the hose in service, to be onsite for review. These documents shall be posted in the company man's trailer and on the rig floor.** If the BLM inspector questions the straightness of the hose, a BLM engineer will be contacted and will review in the field or via picture supplied by inspector to determine if changes are required (operator shall expect delays if this occurs).
3. Minimum working pressure of the blowout preventer (BOP) and related equipment (BOPE) required for drilling below the surface casing shoe shall be **3000 (3M) psi.**
 - a. **For surface casing only:** If the BOP/BOPE is to be tested against casing, the wait on cement (WOC) time for that casing is to be met (see WOC statement at start of casing section). Independent service company required.

EGF 081315