

AUG 28 2015

# SITE MAP

[illegible]

SCALE 1" = 100'

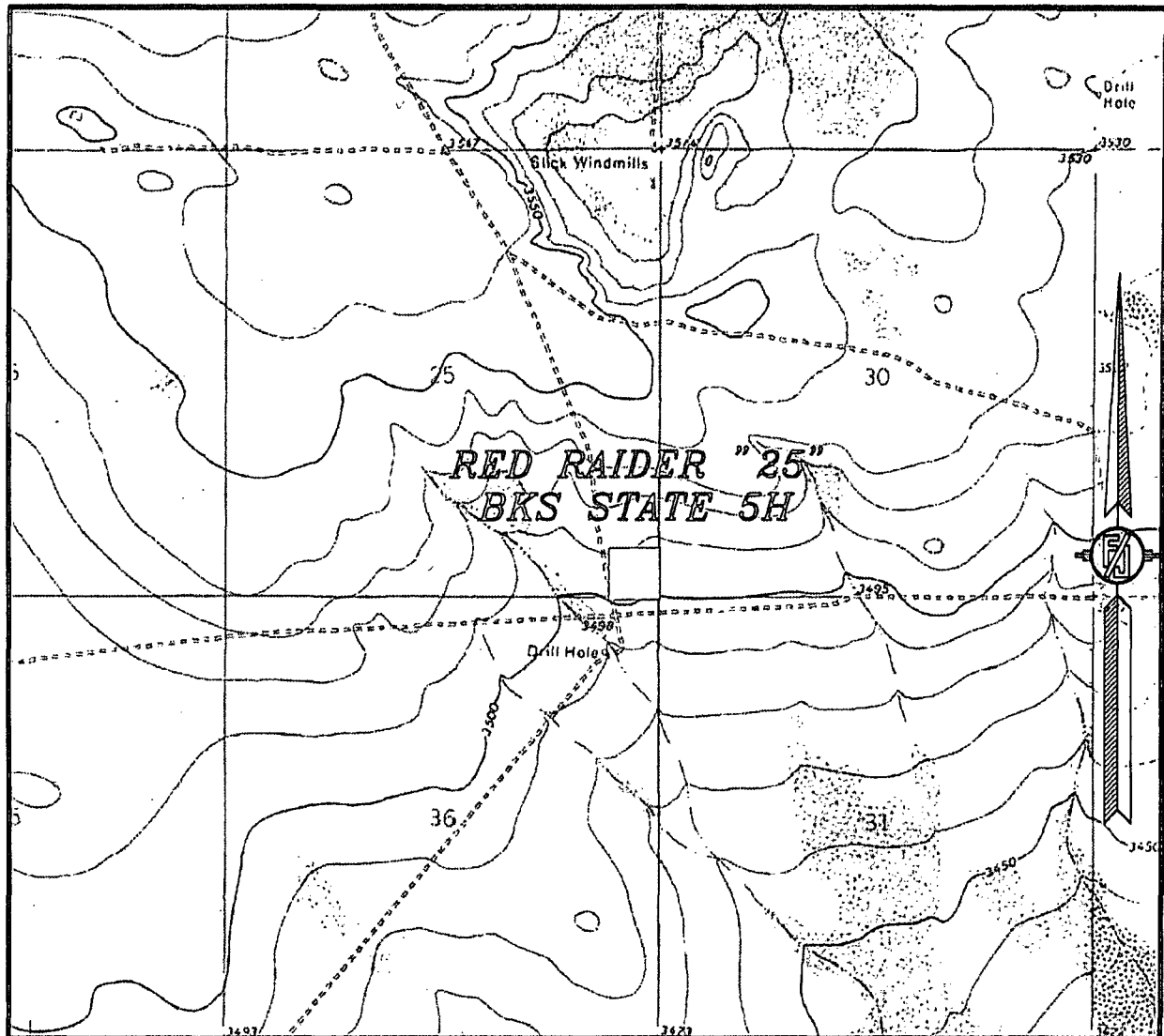
ENDURANCE RESOURCES, LLC  
**RED RAIDER "25" BKS STATE 5H**  
 LOCATED 250 FT. FROM THE SOUTH LINE  
 AND 330 FT. FROM THE EAST LINE OF  
 SECTION 25, TOWNSHIP 24 SOUTH,  
 RANGE 33 EAST, N.M.P.M.  
 LEA COUNTY, STATE OF NEW MEXICO

*SURVEY NO. 4158*

**MADRON SURVEYING, INC.** 301 SOUTH CANAL CARLSBAD, NEW MEXICO  
(575) 234-3341

301 SOUTH CANAL  
(575) 234-3341

SECTION 25, TOWNSHIP 24 SOUTH, RANGE 33 EAST, N.M.P.M.  
LEA COUNTY, STATE OF NEW MEXICO  
LOCATION VERIFICATION MAP



USGS QUAD MAP:  
BELL LAKE

NOT TO SCALE

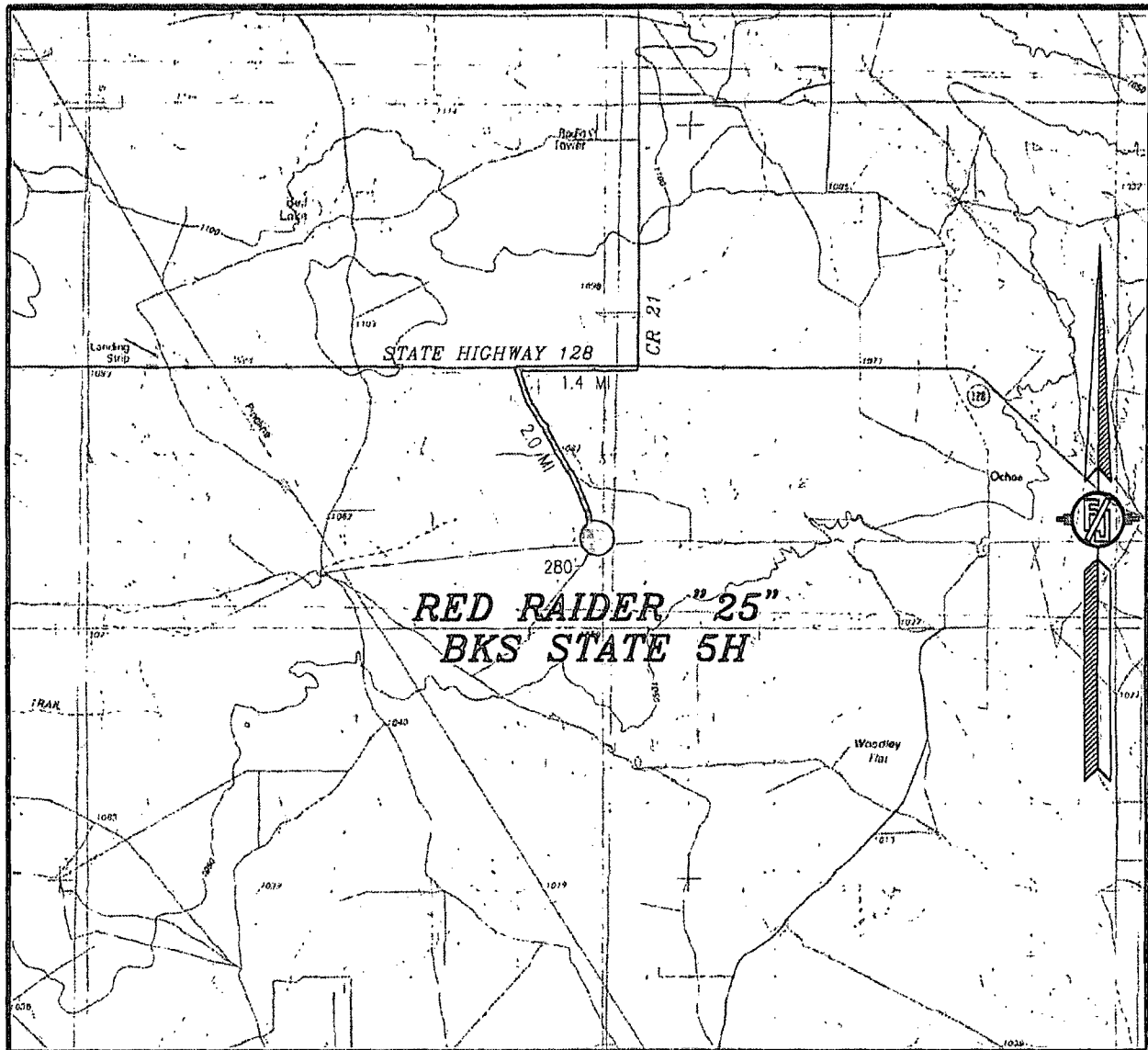
ENDURANCE RESOURCES, LLC  
**RED RAIDER "25" BKS STATE 5H**  
LOCATED 250 FT. FROM THE SOUTH LINE  
AND 330 FT. FROM THE EAST LINE OF  
SECTION 25, TOWNSHIP 24 SOUTH,  
RANGE 33 EAST, N.M.P.M.  
LEA COUNTY, STATE OF NEW MEXICO

AUGUST 4, 2015

MADRON SURVEYING, INC. 301 SOUTH CANAL CARLSBAD, NEW MEXICO  
(575) 234-3341

SURVEY NO. 4158

SECTION 25, TOWNSHIP 24 SOUTH, RANGE 33 EAST, N.M.P.M.  
LEA COUNTY, STATE OF NEW MEXICO  
VICINITY MAP



DISTANCES IN MILES

NOT TO SCALE

**DIRECTIONS TO LOCATION**  
FROM THE INTERSECTION OF STATE HIGHWAY 128 AND CR 21  
(DELAWARE BASIN) GO WEST ON STATE HIGHWAY 128 FOR APPROX.  
1.4 MILES. TURN LEFT GO SOUTHEAST ON 20' CALICHE LEASE ROAD  
(VACA) FOR APPROX. 2.0 MILES. LOCATION IS APPROX. 280' EAST.

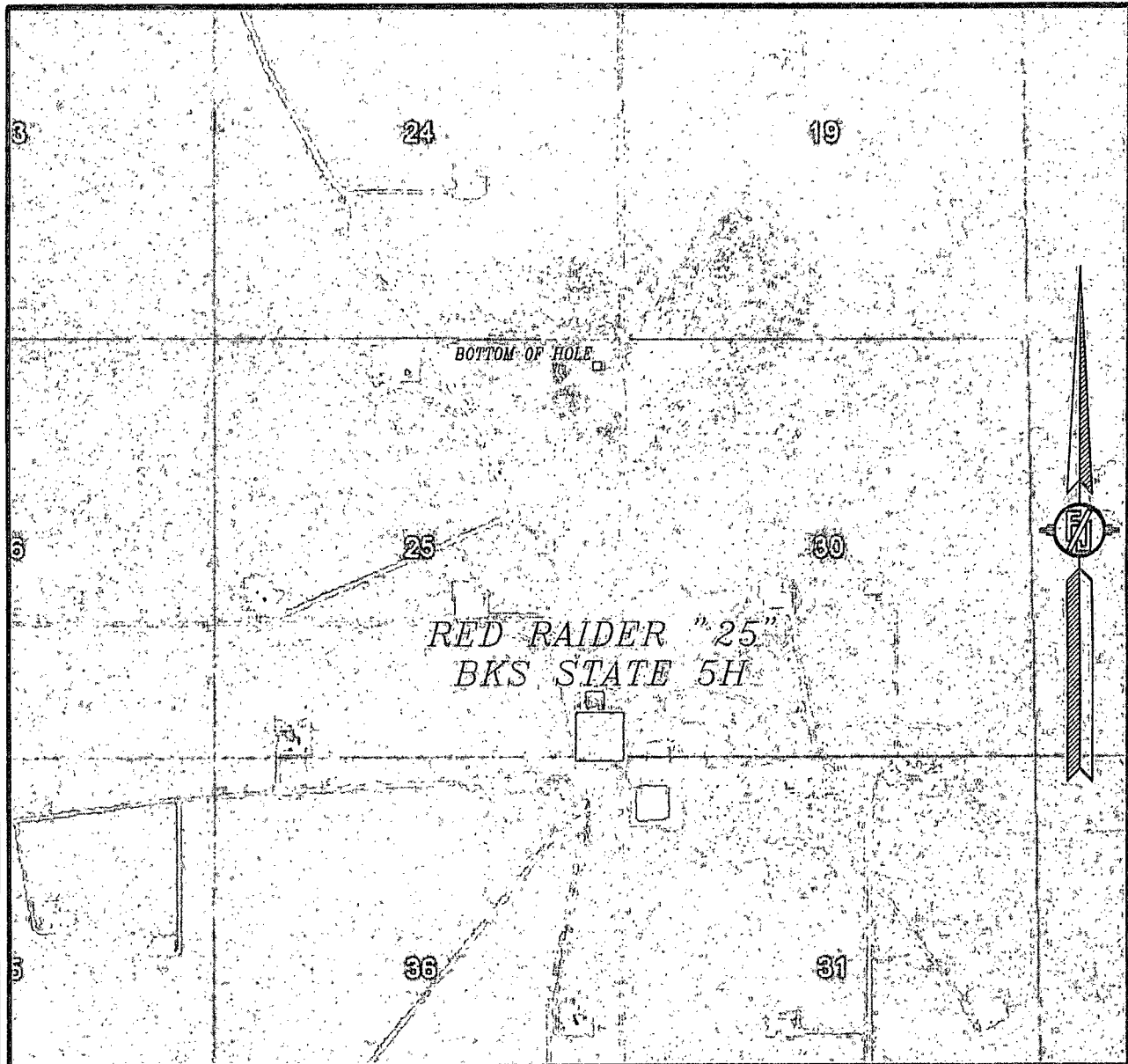
**ENDURANCE RESOURCES, LLC**  
**RED RAIDER "25" BKS STATE 5H**  
LOCATED 250 FT. FROM THE SOUTH LINE  
AND 330 FT. FROM THE EAST LINE OF  
SECTION 25, TOWNSHIP 24 SOUTH,  
RANGE 33 EAST, N.M.P.M.  
LEA COUNTY, STATE OF NEW MEXICO

AUGUST 4, 2015

MADRON SURVEYING, INC. 301 SOUTH CANAL (575) 234-3341 CARLSBAD, NEW MEXICO

SURVEY NO. 4158

SECTION 25, TOWNSHIP 24 SOUTH, RANGE 33 EAST, N.M.P.M.  
LEA COUNTY, STATE OF NEW MEXICO  
AERIAL PHOTO



NOT TO SCALE  
AERIAL PHOTO:  
GOOGLE EARTH  
FEBRUARY 2014

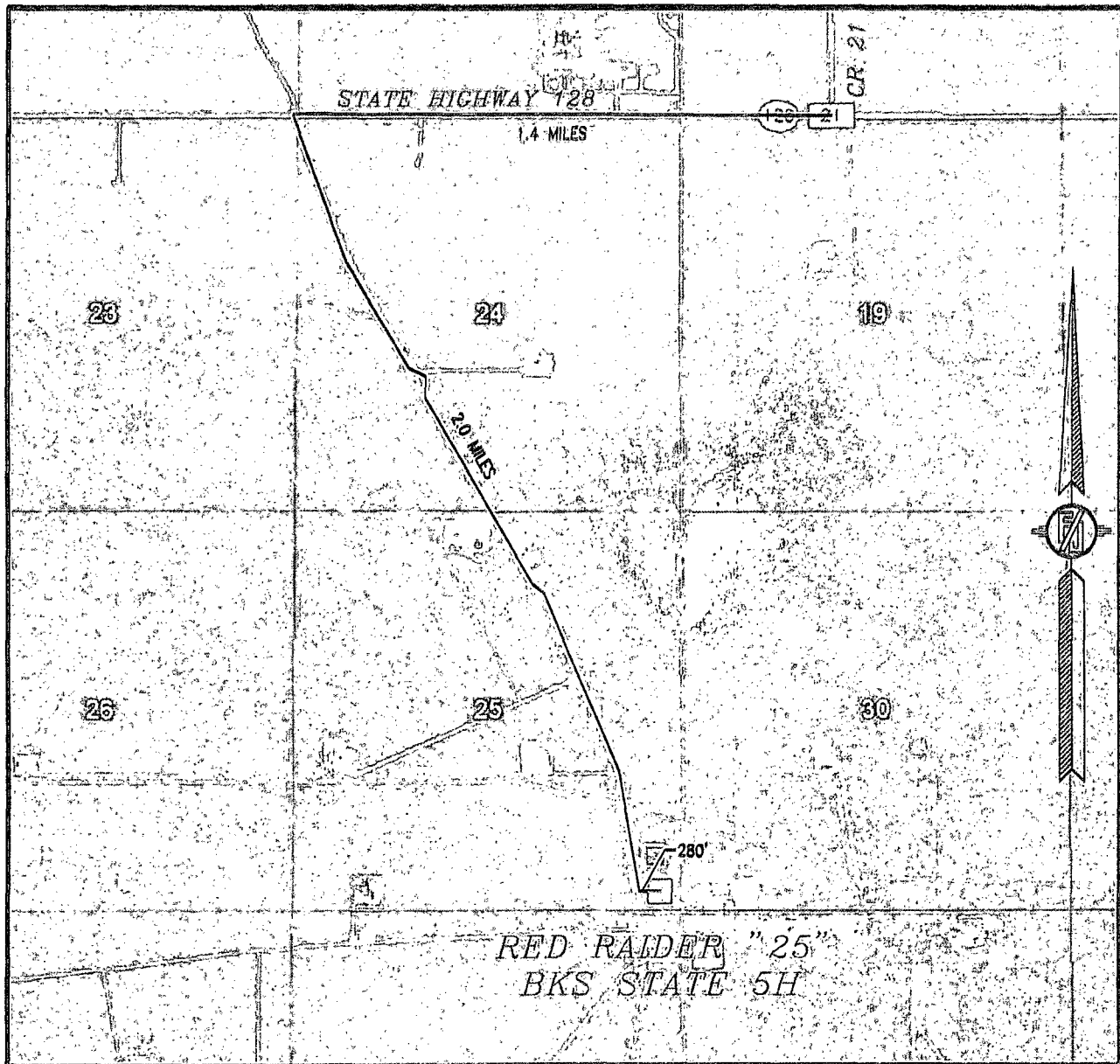
ENDURANCE RESOURCES, LLC  
**RED RAIDER "25" BKS STATE 5H**  
LOCATED 250 FT. FROM THE SOUTH LINE  
AND 330 FT. FROM THE EAST LINE OF  
SECTION 25, TOWNSHIP 24 SOUTH,  
RANGE 33 EAST, N.M.P.M.  
LEA COUNTY, STATE OF NEW MEXICO

AUGUST 4, 2015

SURVEY NO. 4158

MADRON SURVEYING, INC. 301 SOUTH CANAL CARLSBAD, NEW MEXICO  
(575) 234-3341

SECTION 25, TOWNSHIP 24 SOUTH, RANGE 33 EAST, N.M.P.M.  
LEA COUNTY, STATE OF NEW MEXICO  
ACCESS AERIAL ROUTE MAP



NOT TO SCALE  
AERIAL PHOTO:  
GOOGLE EARTH  
FEBRUARY 2014

ENDURANCE RESOURCES, LLC  
**RED RAIDER "25" BKS STATE 5H**  
LOCATED 250 FT. FROM THE SOUTH LINE  
AND 330 FT. FROM THE EAST LINE OF  
SECTION 25, TOWNSHIP 24 SOUTH,  
RANGE 33 EAST, N.M.P.M.  
LEA COUNTY, STATE OF NEW MEXICO

AUGUST 4, 2015

SURVEY NO. 4158

MADRON SURVEYING, INC. 301 SOUTH CANAL (979) 234-3341 CARLSBAD, NEW MEXICO