

District I
1625 N. French Dr., Hobbs, NM 88240
Phone: (575) 393-6161 Fax: (575) 393-0720
District II
511 S. First St., Artesia, NM 88210
Phone: (575) 748-1283 Fax: (575) 748-9720
District III
1000 Rio Brazos Road, Aztec, NM 87410
Phone: (505) 334-6178 Fax: (505) 334-6170
District IV
1220 S. St. Francis Dr., Santa Fe, NM 87505
Phone: (505) 476-3460 Fax: (505) 476-3462

State of New Mexico
Energy, Minerals & Natural Resources Department
OIL CONSERVATION DIVISION
1220 South St. Francis Dr.
Santa Fe, NM 87505

HOBBS OCD
AUG 20 2015
RECEIVED

Form C-102
Revised August 1, 2011
Submit one copy to appropriate
District Office

☐ AMENDED REPORT

WELL LOCATION AND ACREAGE DEDICATION PLAT

¹ API Number 30-025-42730	² Pool Code 59900	³ Pool Name Triple X; Bone Spring
⁴ Property Code 40329	⁵ Property Name SEA SNAKE 35 STATE	⁶ Well Number 10H
⁷ OGRID No. 6137	⁸ Operator Name DEVON ENERGY PRODUCTION COMPANY, L.P.	⁹ Elevation 3645.0

¹⁰ Surface Location

UL or lot no.	Section	Township	Range	Lot Idn	Feet from the	North/South line	Feet from the	East/West line	County
P	35	23 S	33 E		400	SOUTH	450	EAST	LEA

¹¹ Bottom Hole Location If Different From Surface

UL or lot no.	Section	Township	Range	Lot Idn	Feet from the	North/South line	Feet from the	East/West line	County
A	35	23 S	33 E		330	NORTH	350	EAST	LEA

¹² Dedicated Acres 160.00	¹³ Joint or Infill	¹⁴ Consolidation Code	¹⁵ Order No.
--	-------------------------------	----------------------------------	-------------------------

No allowable will be assigned to this completion until all interests have been consolidated or a non-standard unit has been approved by the division.

N89°49'05"E 2638.95 FT		N89°49'05"E 2638.95 FT	
NW CORNER SEC. 35 LAT. = 32.2684152°N LONG. = 103.5516675°W NMSP EAST (FT) N = 462262.37 E = 782939.28	DNF	NE CORNER SEC. 35 LAT. = 32.2683544°N LONG. = 103.5345961°W NMSP EAST (FT) N = 462279.13 E = 788216.11	330'
NOTE: LATITUDE AND LONGITUDE COORDINATES ARE SHOWN USING THE NORTH AMERICAN DATUM OF 1983 (NAD83). LISTED NEW MEXICO STATE PLANE EAST COORDINATES ARE GRID (NAD83). BASIS OF BEARING AND DISTANCES USED ARE NEW MEXICO STATE PLANE EAST COORDINATES MODIFIED TO THE SURFACE.		BOTTOM OF HOLE LAT. = 32.2674516°N LONG. = 103.5357283°W NMSP EAST (FT) N = 461948.09 E = 787868.60	
DNF		DNF	
SW CORNER SEC. 35 LAT. = 32.2538795°N LONG. = 103.5516653°W NMSP EAST (FT) N = 456974.34 E = 782978.47		SEA SNAKE "35" STATE 10H ELEV. = 3645.0' LAT. = 32.2549633°N (NAD83) LONG. = 103.5360533°W NMSP EAST (FT) N = 457404.12 E = 787801.88	400'
S 0 CORNER SEC. 35 LAT. = 32.2538736°N LONG. = 103.5431297°W NMSP EAST (FT) N = 456991.51 E = 785617.22		SE CORNER SEC. 35 LAT. = 32.2538616°N LONG. = 103.5345979°W NMSP EAST (FT) N = 457006.67 E = 788254.80	450'
S89°37'38"W 2639.33 FT		S89°40'15"W 2638.14 FT	

17 OPERATOR CERTIFICATION
I hereby certify that the information contained herein is true and complete to the best of my knowledge and belief, and that this organization either owns a working interest or unleased mineral interest in the land including the proposed bottom hole location or has a right to drill this well at this location pursuant to a contract with an owner of such a mineral or working interest, or to a voluntary pooling agreement or a compulsory pooling order heretofore entered by the division.

Linda Good 8/18/2015
Signature Date
Linda Good
Printed Name
linda.good@dvn.com
E-mail Address

18 SURVEYOR CERTIFICATION
I hereby certify that the well location shown on this plat was plotted from field notes of actual surveys made by me or under my supervision, and that the same is true and correct to the best of my belief.

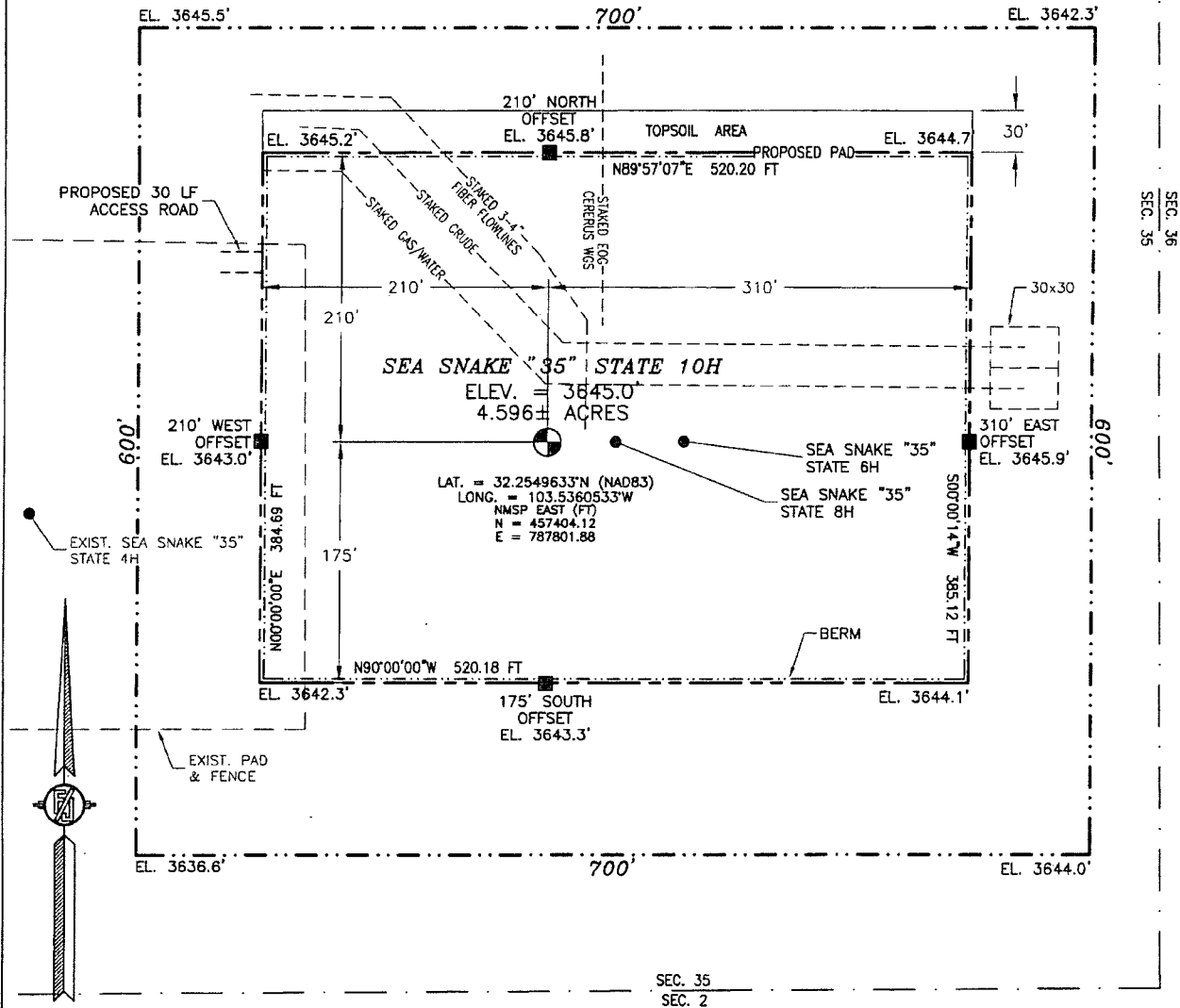
JUN 23 2015
Date of Survey
12797
FELIX M. JARAMILLO
REGISTERED PROFESSIONAL SURVEYOR
Signature and Seal of Professional Surveyor:
Certificate Number: FELIX M. JARAMILLO, PLS 12797
SURVEY NO. 3818A

AUG 31 2015

SECTION 35, TOWNSHIP 23 SOUTH, RANGE 33 EAST, N.M.P.M.
LEA COUNTY, STATE OF NEW MEXICO

SITE MAP

NOTE: LATITUDE AND LONGITUDE COORDINATES ARE SHOWN USING THE NORTH AMERICAN DATUM OF 1983 (NAD83). LISTED NEW MEXICO STATE PLANE EAST COORDINATES ARE GRID (NAD83). BASIS OF BEARING AND DISTANCES USED ARE NEW MEXICO STATE PLANE EAST COORDINATES MODIFIED TO THE SURFACE



0 12 60 120 240
SCALE 1" = 120'

DIRECTIONS TO LOCATION

FROM THE INTERSECTION OF STATE HIGHWAY 128 AND CR J2 (BRININSTOOL ROAD) GO NORTHWEST ON CR J2 APPROX. 3.2 MILES TO CALICHE LEASE ROAD ON RIGHT PAST FRAC POND, GO EAST (RIGHT) APPROX. 0.46 OF A MILE, TURN NORTH GO APPROX. 450', TURN RIGHT APPROX. 0.41 OF A MILE TAKE ROAD NORTH SIDE OF PAD GO APPROX. 0.42 OF A MILE TO EXISTING PAD FOR SEA SNAKE "35" STATE 1H & 2H, FROM NORTHEAST CORNER OF PAD GO EAST FOLLOW FLAGS APPROX. 1369' TO NORTHWEST CORNER OF SEA SNAKE "35" STATE 3H, FROM THE NORTHEAST CORNER OF PAD GO EAST 898' TO THE NORTHWEST CORNER OF SEA SNAKE "35" STATE 4H, FROM THE EAST SIDE OF PAD GO EAST 30' TO THE NORTHWEST PAD CORNER FOR THIS LOCATION.

DEVON ENERGY PRODUCTION COMPANY, L.P.

SEA SNAKE "35" STATE 10H

LOCATED 400 FT. FROM THE SOUTH LINE

AND 450 FT. FROM THE EAST LINE OF

SECTION 35, TOWNSHIP 23 SOUTH,

RANGE 33 EAST, N.M.P.M.

LEA COUNTY, STATE OF NEW MEXICO

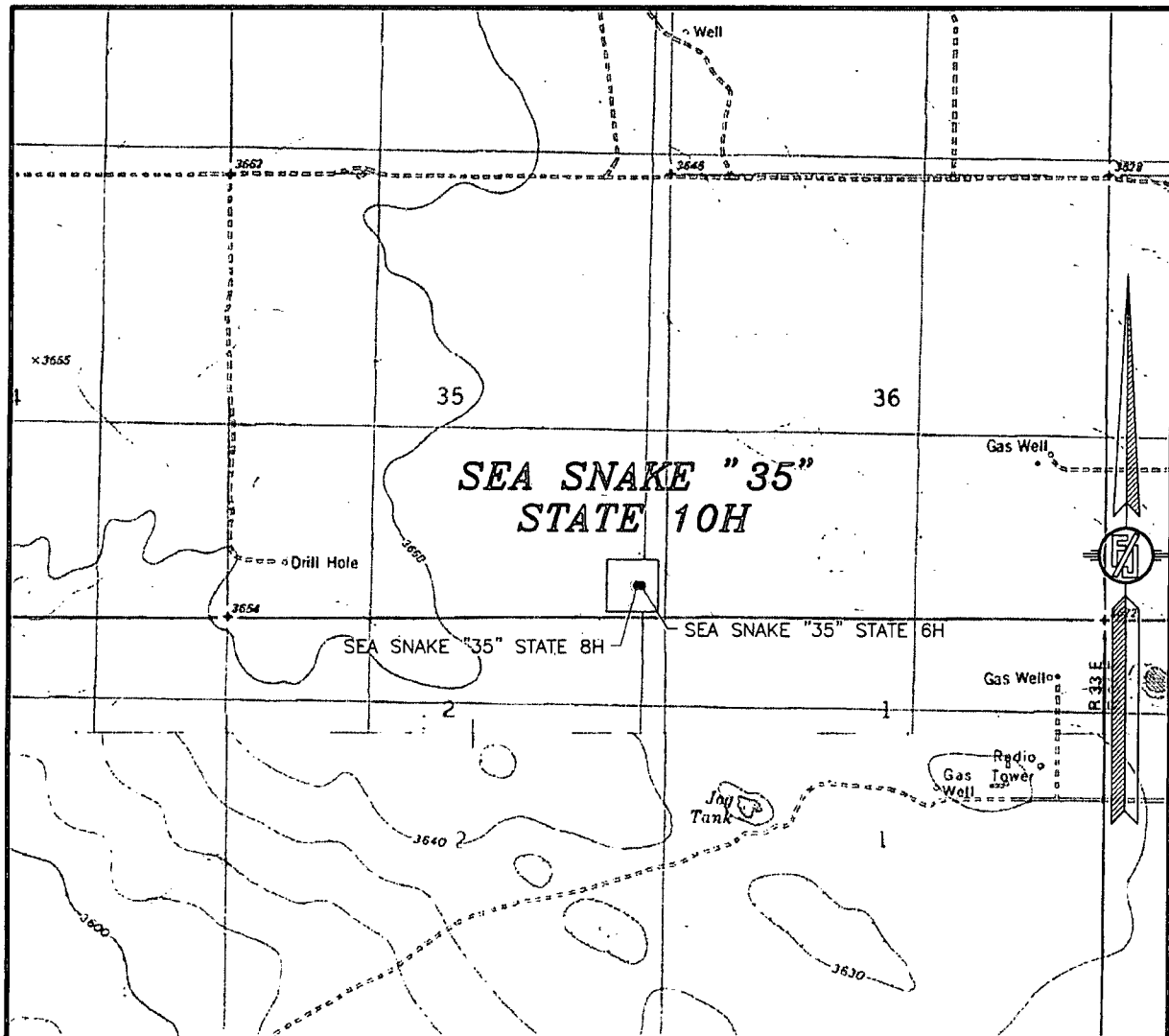
JUNE 23, 2015

SURVEY NO. 3818A

MADRON SURVEYING, INC. 301 SOUTH CANAL (575) 234-3341

CARLSBAD, NEW MEXICO

35, TOWNSHIP 23 SOUTH, RANGE 33 EAST, N.M.P.M.
LEA COUNTY, STATE OF NEW MEXICO
LOCATION VERIFICATION MAP



USGS QUAD MAP:
TIP TOP WELLS

NOT TO SCALE

DEVON ENERGY PRODUCTION COMPANY, L.P.

SEA SNAKE "35" STATE 10H

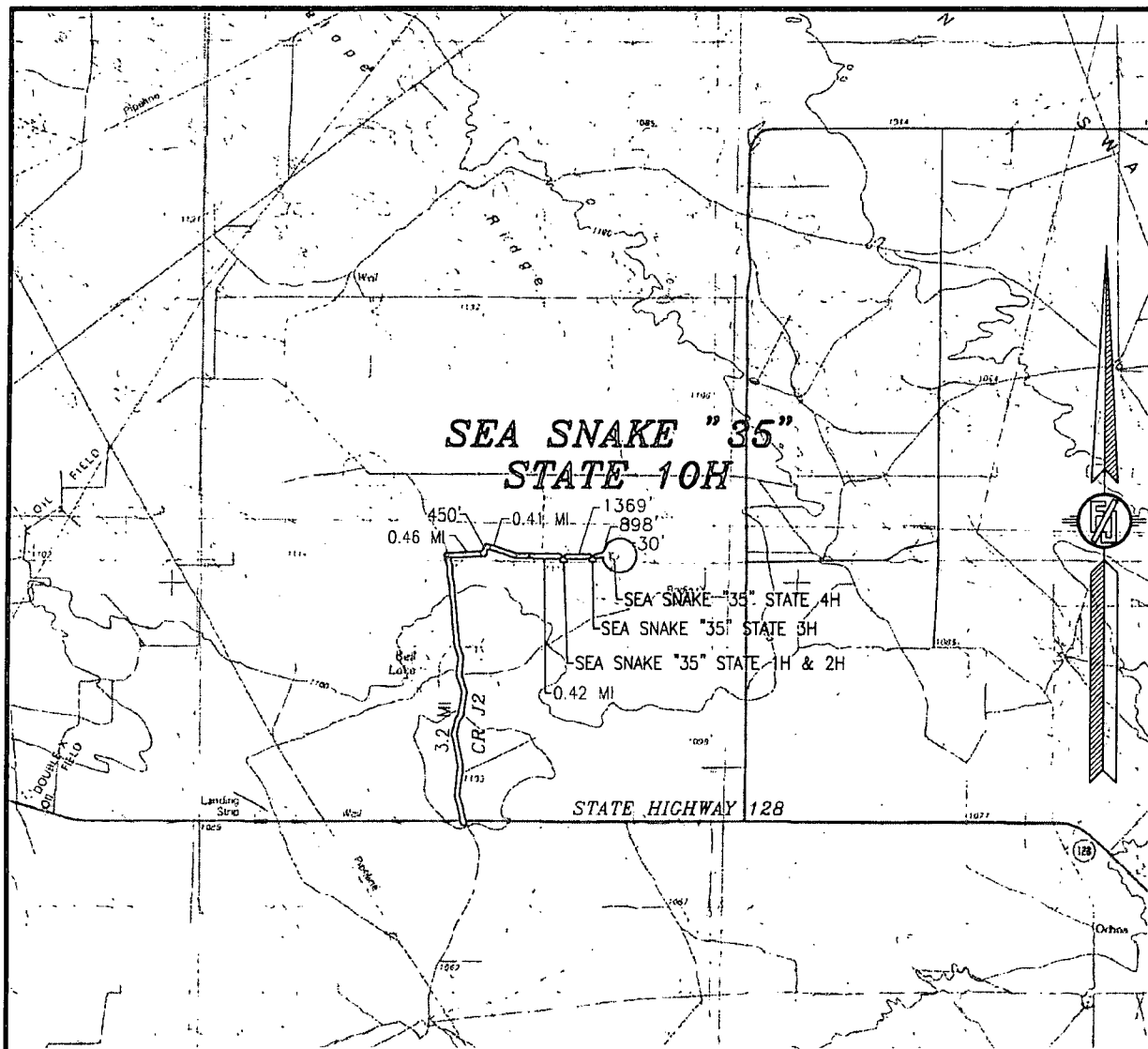
LOCATED 400 FT. FROM THE SOUTH LINE
AND 450 FT. FROM THE EAST LINE OF
SECTION 35, TOWNSHIP 23 SOUTH,
RANGE 33 EAST, N.M.P.M.
LEA COUNTY, STATE OF NEW MEXICO

JUNE 23, 2015

SURVEY NO. 3818A.

MADRON SURVEYING, INC. 301 SOUTH CANAL CARLSBAD, NEW MEXICO
(575) 234-3341

SECTION 35, TOWNSHIP 23 SOUTH, RANGE 33 EAST, N.M.P.M.
LEA COUNTY, STATE OF NEW MEXICO
VICINITY MAP



DISTANCES IN MILES

NOT TO SCALE

DEVON ENERGY PRODUCTION COMPANY, L.P.

SEA SNAKE "35" STATE 10H

LOCATED 400 FT. FROM THE SOUTH LINE

AND 450 FT. FROM THE EAST LINE OF

SECTION 35, TOWNSHIP 23 SOUTH,

RANGE 33 EAST, N.M.P.M.

LEA COUNTY, STATE OF NEW MEXICO

JUNE 23, 2015

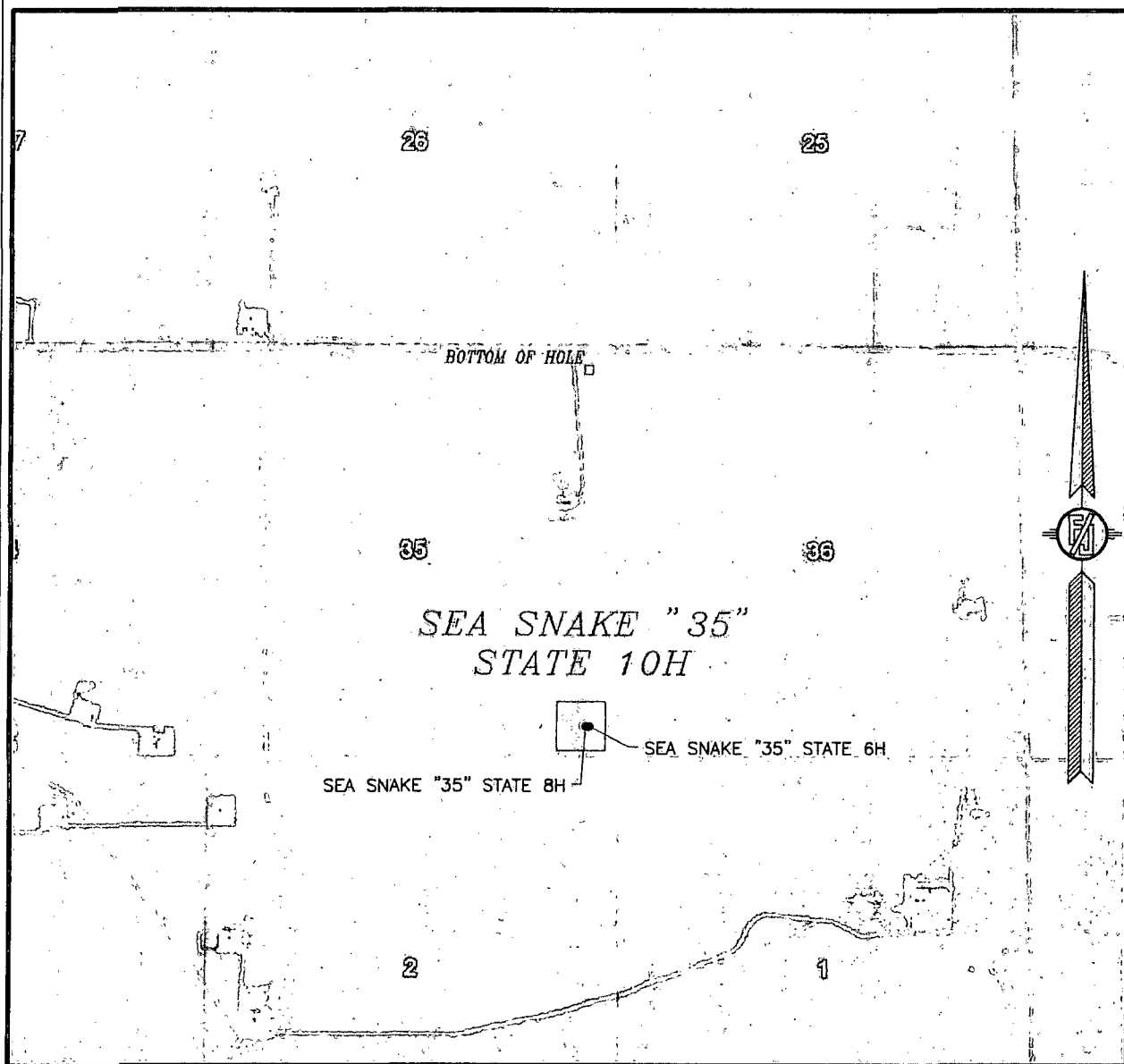
DIRECTIONS TO LOCATION

FROM THE INTERSECTION OF STATE HIGHWAY 128 AND CR J2 (BRININSTOOL ROAD) GO NORTHWEST ON CR J2 APPROX. 3.2 MILES TO CALICHE LEASE ROAD ON RIGHT PAST FRAC POND, GO EAST (RIGHT) APPROX. 0.46 OF A MILE, TURN NORTH GO APPROX. 450', TURN RIGHT APPROX. 0.41 OF A MILE TAKE ROAD NORTH SIDE OF PAD GO APPROX. 0.42 OF A MILE TO EXISTING PAD FOR SEA SNAKE "35" STATE 1H & 2H. FROM NORTHEAST CORNER OF PAD GO EAST FOLLOW FLAGS APPROX. 1369' TO NORTHWEST CORNER OF SEA SNAKE "35" STATE 3H. FROM THE NORTHEAST CORNER OF PAD GO EAST 898' TO THE NORTHWEST CORNER OF SEA SNAKE "35" STATE 4H. FROM THE EAST SIDE OF PAD GO EAST 30' TO THE NORTHWEST PAD CORNER FOR THIS LOCATION.

SURVEY NO. 3818A

MADRON SURVEYING, INC. 301 SOUTH CANAL (575) 234-3341 CARLSBAD, NEW MEXICO

SECTION 35, TOWNSHIP 23 SOUTH, RANGE 33 EAST, N.M.P.M.
LEA COUNTY, STATE OF NEW MEXICO
AERIAL PHOTO



NOT TO SCALE
AERIAL PHOTO:
GOOGLE EARTH
FEBRUARY 2014

DEVON ENERGY PRODUCTION COMPANY, L.P.

SEA SNAKE "35" STATE 10H

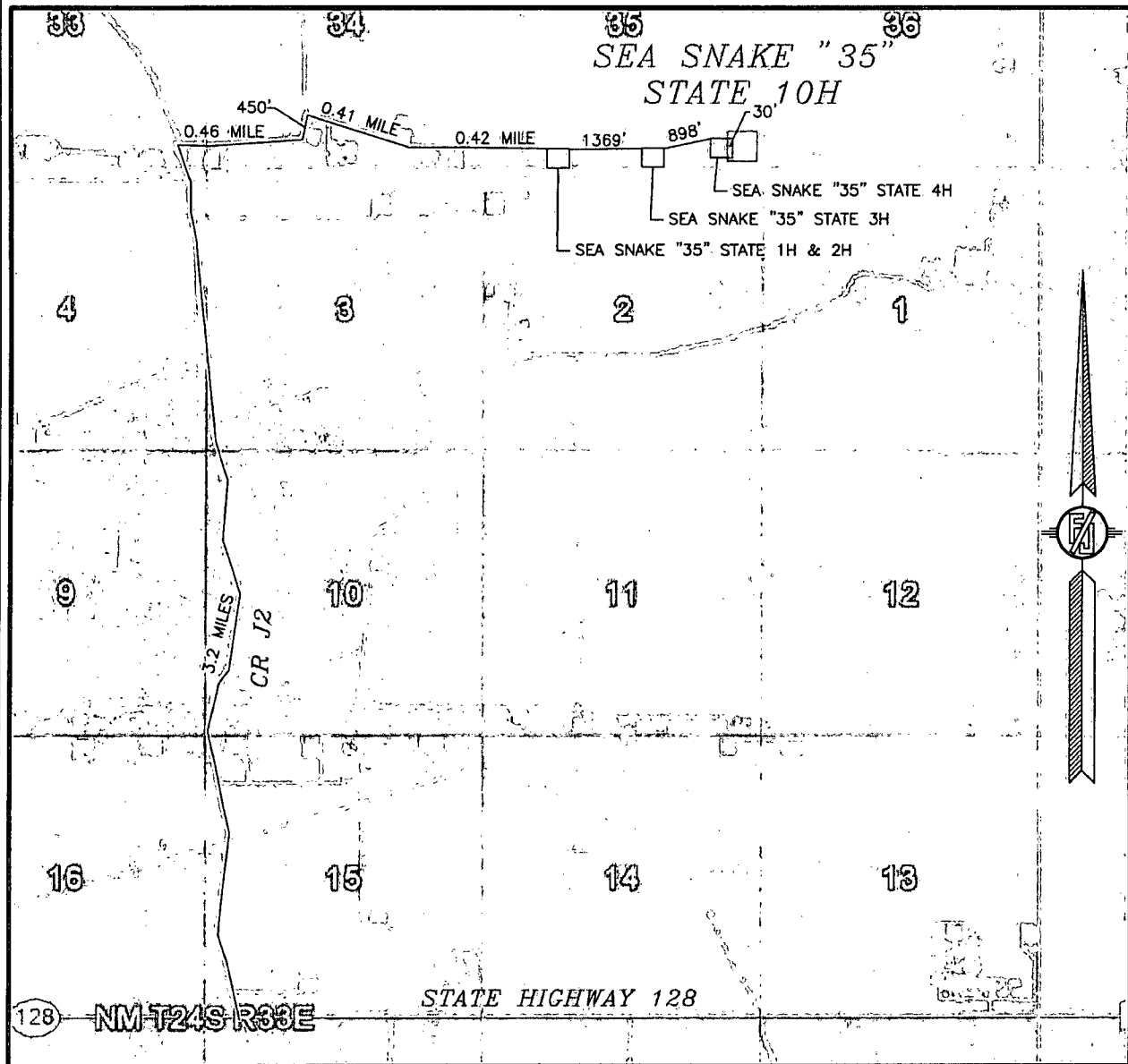
LOCATED 400 FT. FROM THE SOUTH LINE
AND 450 FT. FROM THE EAST LINE OF
SECTION 35, TOWNSHIP 23 SOUTH,
RANGE 33 EAST, N.M.P.M.
LEA COUNTY, STATE OF NEW MEXICO

JUNE 23, 2015

SURVEY NO. 3818A

MADRON SURVEYING, INC. 301 SOUTH CANAL (575) 234-3341 CARLSBAD, NEW MEXICO

SECTION 35, TOWNSHIP 23 SOUTH, RANGE 33 EAST, N.M.P.M.
LEA COUNTY, STATE OF NEW MEXICO
ACCESS AERIAL ROUTE MAP



NOT TO SCALE
AERIAL PHOTO:
GOOGLE EARTH
FEBRUARY 2014

DEVON ENERGY PRODUCTION COMPANY, L.P.

SEA SNAKE "35" STATE 10H

LOCATED 400 FT. FROM THE SOUTH LINE
AND 450 FT. FROM THE EAST LINE OF
SECTION 35, TOWNSHIP 23 SOUTH,
RANGE 33 EAST, N.M.P.M.
LEA COUNTY, STATE OF NEW MEXICO

JUNE 23, 2015

SURVEY NO. 3818A

MADRON SURVEYING, INC. 301 SOUTH CANAL (575) 234-3341 CARLSBAD, NEW MEXICO