

AUG 20 2015

District I  
1625 N. French Dr., Hobbs, NM 88240  
Phone: (575) 393-6161 Fax: (575) 393-0720

District II  
811 S. First St., Artesia, NM 88210  
Phone: (575) 743-1283 Fax: (575) 748-9720

District III  
1000 Rio Brazos Road, Aztec, NM 87410  
Phone: (505) 334-6178 Fax: (505) 334-6170

District IV  
1220 S. St. Francis Dr., Santa Fe, NM 87505  
Phone: (505) 476-3460 Fax: (505) 476-3462

State of New Mexico  
Energy, Minerals & Natural Resources Department  
**OIL CONSERVATION DIVISION**  
1220 South St. Francis Dr.  
Santa Fe, NM 87505

Form C-102  
Revised August 1, 2011  
Submit one copy to appropriate  
District Office

☐ AMENDED REPORT

## WELL LOCATION AND ACREAGE DEDICATION PLAT

<sup>1</sup> API Number <b>30-025-42739</b>	<sup>2</sup> Pool Code <b>59900</b>	<sup>3</sup> Pool Name <b>Triple X; Bone Spring</b>
<sup>4</sup> Property Code <b>40329</b>	<sup>5</sup> Property Name <b>SEA SNAKE 35 STATE</b>	<sup>6</sup> Well Number <b>8H</b>
<sup>7</sup> OGRID No. <b>6137</b>	<sup>8</sup> Operator Name <b>DEVON ENERGY PRODUCTION COMPANY, L.P.</b>	<sup>9</sup> Elevation <b>3645.2</b>

<sup>10</sup> Surface Location

UL or lot no.	Section	Township	Range	Lot Idn	Feet from the	North/South line	Feet from the	East/West line	County
<b>P</b>	<b>35</b>	<b>23 S</b>	<b>33 E</b>		<b>400</b>	<b>SOUTH</b>	<b>400</b>	<b>EAST</b>	<b>LEA</b>

<sup>11</sup> Bottom Hole Location If Different From Surface

UL or lot no.	Section	Township	Range	Lot Idn	Feet from the	North/South line	Feet from the	East/West line	County
<b>D</b>	<b>35</b>	<b>23 S</b>	<b>33 E</b>		<b>330</b>	<b>NORTH</b>	<b>350</b>	<b>EAST</b>	<b>LEA</b>

<sup>12</sup> Dedicated Acres	<sup>13</sup> Joint or Infill	<sup>14</sup> Consolidation Code	<sup>15</sup> Order No.
<b>160.00</b>			

No allowable will be assigned to this completion until all interests have been consolidated or a non-standard unit has been approved by the division.

<p>N89°49'05"E 2638.95 FT</p> <p>NW CORNER SEC. 35 LAT. = 32.2684152°N LONG. = 103.5516675°W NMSP EAST (FT) N = 462262.37 E = 782939.28</p> <p>NOTE: LATITUDE AND LONGITUDE COORDINATES ARE SHOWN USING THE NORTH AMERICAN DATUM OF 1983 (NAD83). LISTED NEW MEXICO STATE PLANE EAST COORDINATES ARE GRID (NAD83). BASIS OF BEARING AND DISTANCES USED ARE NEW MEXICO STATE PLANE EAST COORDINATES MODIFIED TO THE SURFACE.</p> <p>DNF</p>		<p>N89°49'05"E 2638.95 FT</p> <p>NE CORNER SEC. 35 LAT. = 32.2683544°N LONG. = 103.5345961°W 350' NMSP EAST (FT) N = 462279.13 E = 788216.11</p> <p>350'</p> <p>BOTTOM OF HOLE</p> <p>BOTTOM OF HOLE LAT. = 32.2674516°N LONG. = 103.5357283°W NMSP EAST (FT) N = 461948.09 E = 787868.60</p> <p>500'25.14"E 2636.82 FT</p>	
<p>DNF</p> <p>SEA SNAKE "35" STATE 8H ELEV. = 3645.2' LAT. = 32.254963°N (NAD83) LONG. = 103.5358916°W NMSP EAST (FT) N = 457404.40 E = 787851.88</p> <p>DNF</p>		<p>500'25.14"E 2636.82 FT</p> <p>SURFACE LOCATION</p> <p>400'</p>	
<p>SW CORNER SEC. 35 LAT. = 32.2538795°N LONG. = 103.5516653°W NMSP EAST (FT) N = 456974.34 E = 782978.47</p> <p>589°37'38"W 2639.33 FT</p>		<p>S O CORNER SEC. 35 LAT. = 32.2538736°N LONG. = 103.5431297°W NMSP EAST (FT) N = 456991.51 E = 785617.22</p> <p>589°40'15"W 2638.14 FT</p>	

**<sup>17</sup> OPERATOR CERTIFICATION**

I hereby certify that the information contained herein is true and complete to the best of my knowledge and belief, and that this organization either owns a working interest or unleased mineral interest in the land including the proposed bottom hole location or has a right to drill this well at this location pursuant to a contract with an owner of such a mineral or working interest, or to a voluntary pooling agreement or a compulsory pooling order heretofore entered by the division.

*Linda Good* 8/18/2015  
Signature Date

Linda Good  
Printed Name

[linda.good@devon.com](mailto:linda.good@devon.com)  
E-mail Address

**<sup>18</sup> SURVEYOR CERTIFICATION**

I hereby certify that the well location shown on this plat was plotted from field notes of actual surveys made by me or under my supervision, and that the same is true and correct to the best of my belief.

*Simon F. Jaramillo*  
Signature and Seal of Professional Surveyor

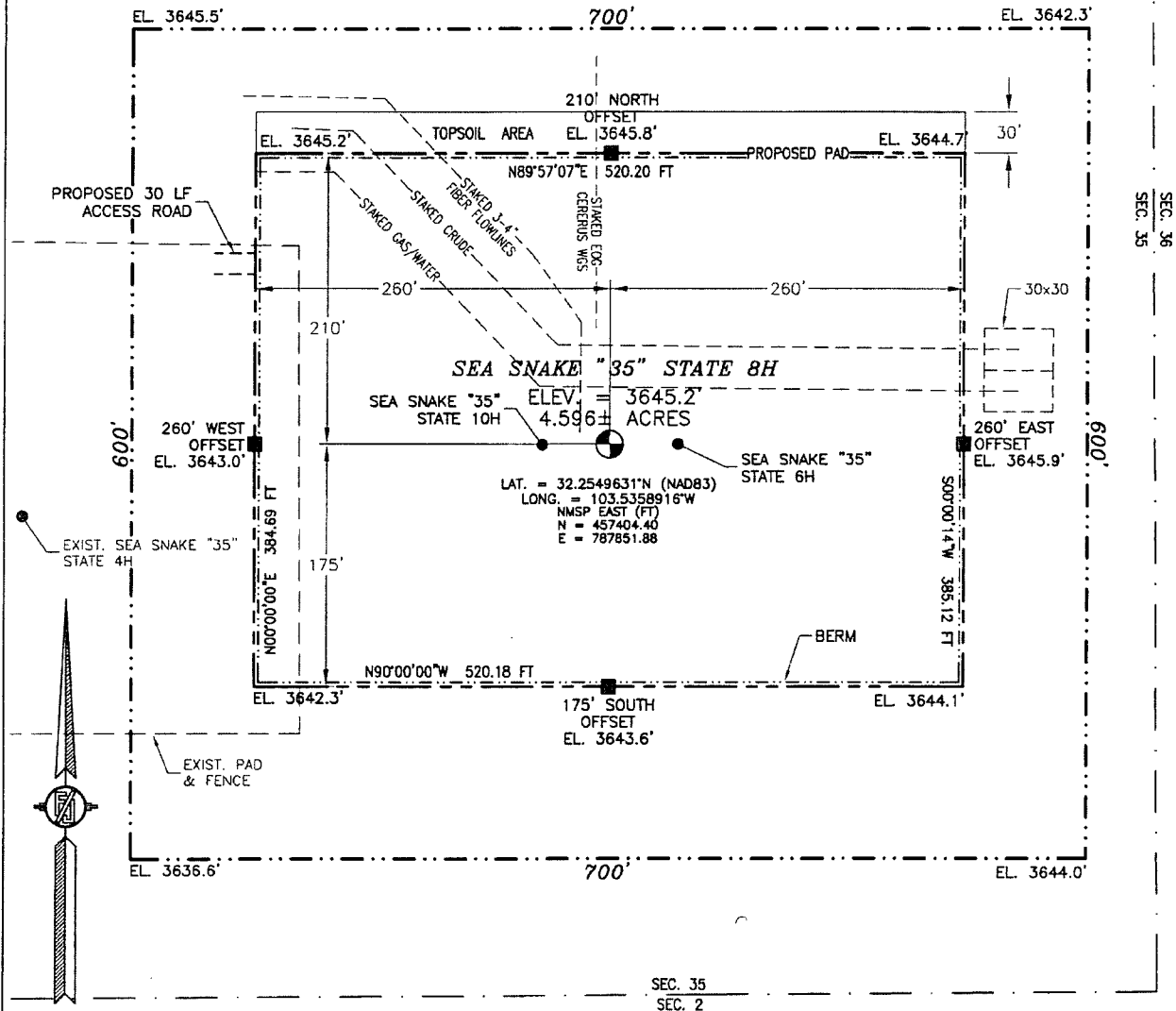
12707  
Certificate Number: SIMON F. JARAMILLO, PLS 12707

SURVEY NO. 3816

AUG 31 2015

SECTION 35, TOWNSHIP 23 SOUTH, RANGE 33 EAST, N.M.P.M.  
LEA COUNTY, STATE OF NEW MEXICO  
**SITE MAP**

NOTE: LATITUDE AND LONGITUDE COORDINATES ARE SHOWN USING THE NORTH AMERICAN DATUM OF 1983 (NAD83). LISTED NEW MEXICO STATE PLANE EAST COORDINATES ARE GRID (NAD83). BASIS OF BEARING AND DISTANCES USED ARE NEW MEXICO STATE PLANE EAST COORDINATES MODIFIED TO THE SURFACE



0 12 60 120 240  
SCALE 1" = 120'

**DIRECTIONS TO LOCATION**

FROM THE INTERSECTION OF STATE HIGHWAY 128 AND CR J2 (BRININSTOOL ROAD) GO NORTHWEST ON CR J2 APPROX. 3.2 MILES TO CALICHE LEASE ROAD ON RIGHT PAST FRAC POND, GO EAST (RIGHT) APPROX. 0.46 OF A MILE, TURN NORTH GO APPROX. 450', TURN RIGHT APPROX. 0.41 OF A MILE TAKE ROAD NORTH SIDE OF PAD GO APPROX. 0.42 OF A MILE TO EXISTING PAD FOR SEA SNAKE "35" STATE 1H & 2H, FROM NORTHEAST CORNER OF PAD GO EAST FOLLOW FLAGS APPROX. 1369' TO NORTHWEST CORNER OF SEA SNAKE "35" STATE 3H, FROM THE NORTHEAST CORNER OF PAD GO EAST 898' TO THE NORTHWEST CORNER OF SEA SNAKE "35" STATE 4H, FROM THE EAST SIDE OF PAD GO EAST 30' TO THE NORTHWEST PAD CORNER FOR THIS LOCATION.

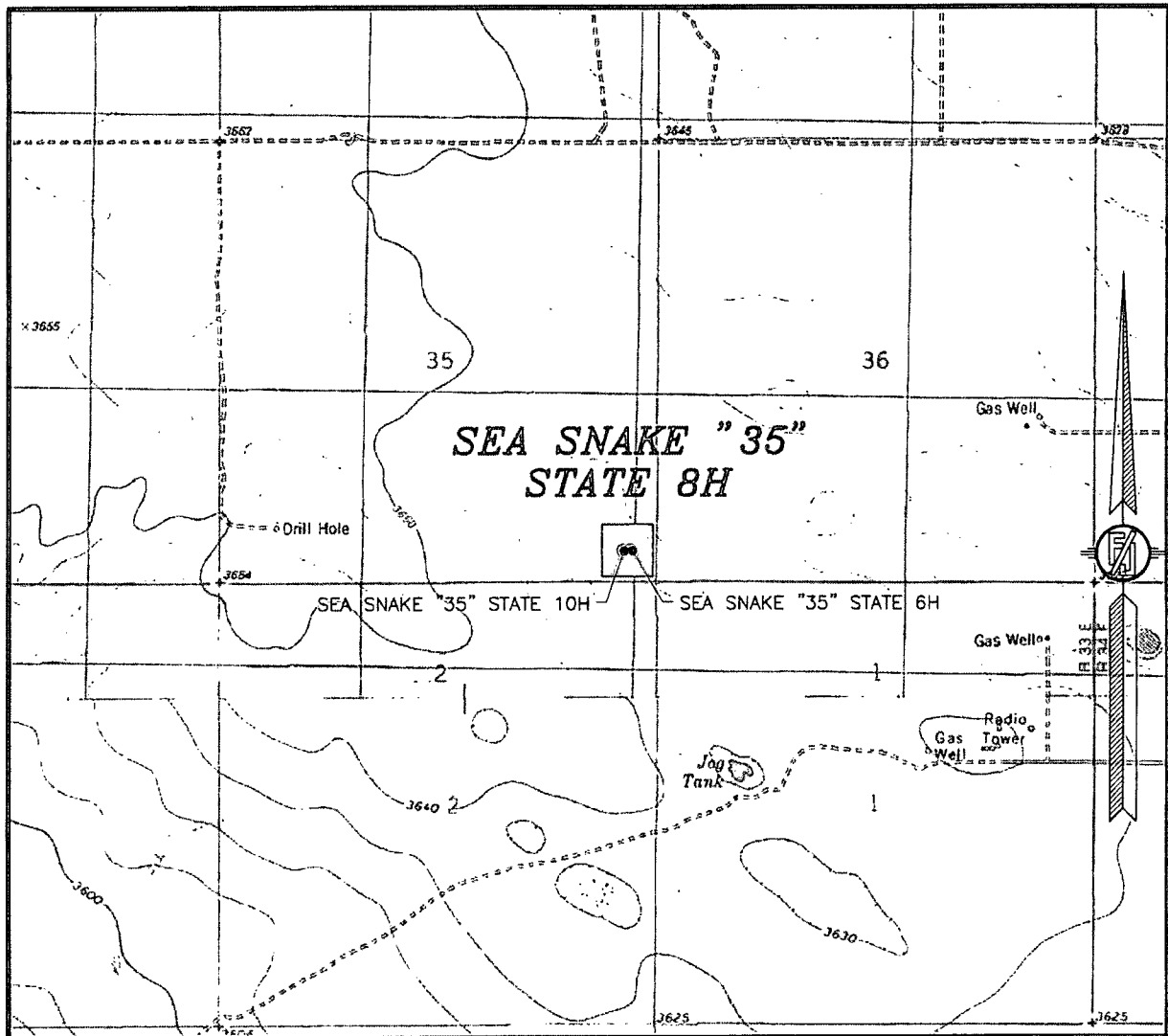
DEVON ENERGY PRODUCTION COMPANY, L.P.  
**SEA SNAKE "35" STATE 8H**  
LOCATED 400 FT. FROM THE SOUTH LINE  
AND 400 FT. FROM THE EAST LINE OF  
SECTION 35, TOWNSHIP 23 SOUTH,  
RANGE 33 EAST, N.M.P.M.  
LEA COUNTY, STATE OF NEW MEXICO

JUNE 23, 2015

SURVEY NO. 3816A

MADRON SURVEYING, INC. 301 SOUTH CANAL (575) 234-3341 CARLSBAD, NEW MEXICO

SECTION 35, TOWNSHIP 23 SOUTH, RANGE 33 EAST, N.M.P.M.  
LEA COUNTY, STATE OF NEW MEXICO  
LOCATION VERIFICATION MAP



USGS QUAD MAP:  
TIP TOP WELLS

NOT TO SCALE

DEVON ENERGY PRODUCTION COMPANY, L.P.

**SEA SNAKE "35" STATE 8H**

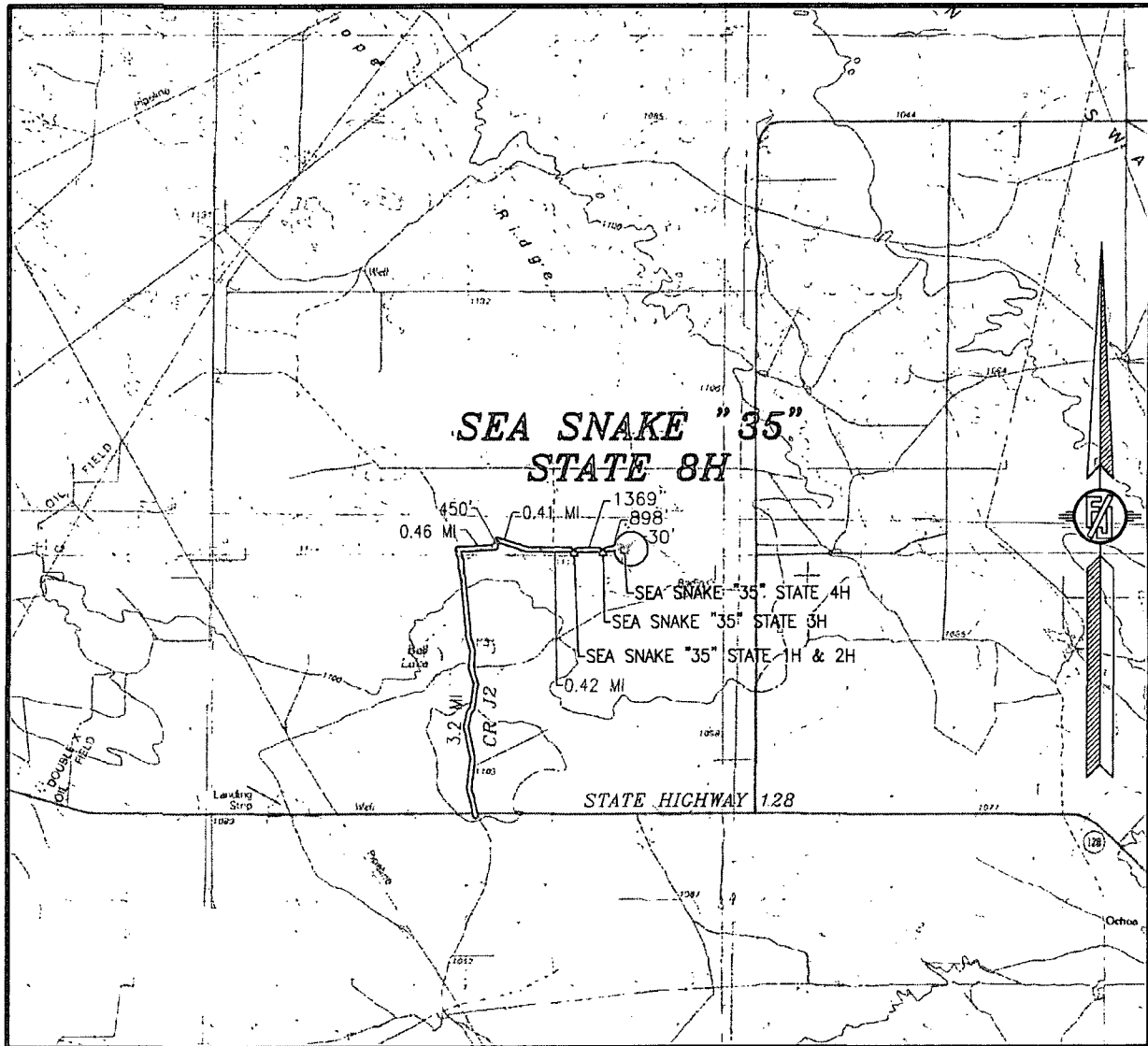
LOCATED 400 FT. FROM THE SOUTH LINE  
AND 400 FT. FROM THE EAST LINE OF  
SECTION 35, TOWNSHIP 23 SOUTH,  
RANGE 33 EAST, N.M.P.M.  
LEA COUNTY, STATE OF NEW MEXICO

JUNE 23, 2015

SURVEY NO. 3816A

MADRON SURVEYING, INC. 301 SOUTH CANAL (575) 234-3341 CARLSBAD, NEW MEXICO

SECTION 35, TOWNSHIP 23 SOUTH, RANGE 33 EAST, N.M.P.M.  
LEA COUNTY, STATE OF NEW MEXICO  
VICINITY MAP



DISTANCES IN MILES

NOT TO SCALE

DEVON ENERGY PRODUCTION COMPANY, L.P.

**SEA SNAKE "35" STATE 8H**

LOCATED 400 FT. FROM THE SOUTH LINE

AND 400 FT. FROM THE EAST LINE OF

SECTION 35, TOWNSHIP 23 SOUTH,

RANGE 33 EAST, N.M.P.M.

LEA COUNTY, STATE OF NEW MEXICO

JUNE 23, 2015

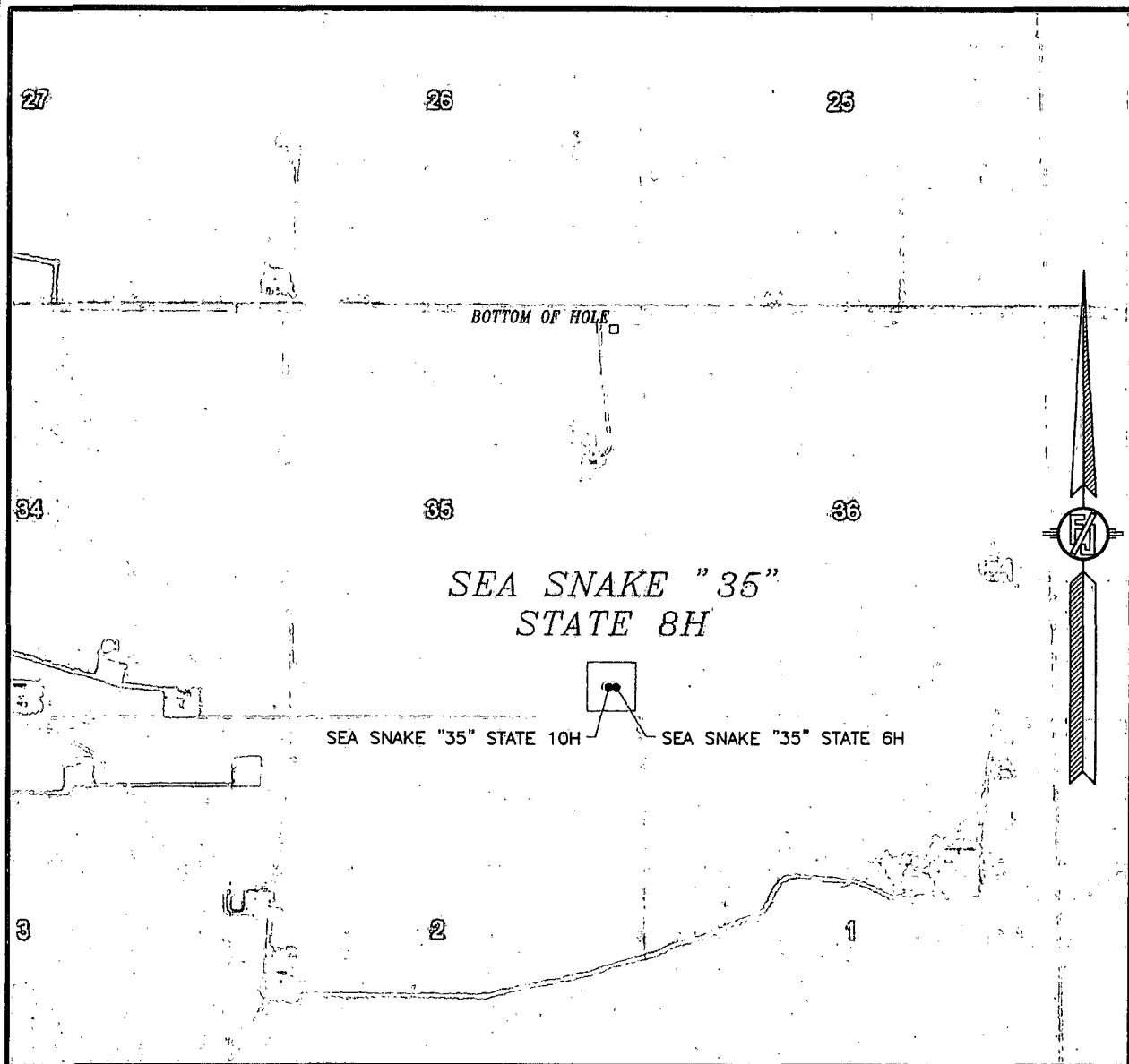
**DIRECTIONS TO LOCATION**

FROM THE INTERSECTION OF STATE HIGHWAY 128 AND CR J2 (BRINSTOOL ROAD) GO NORTHWEST ON CR J2 APPROX. 3.2 MILES TO CALICHE LEASE ROAD ON RIGHT PAST FRAC POND, GO EAST (RIGHT) APPROX. 0.46 OF A MILE, TURN NORTH GO APPROX. 450', TURN RIGHT APPROX. 0.41 OF A MILE TAKE ROAD NORTH SIDE OF PAD GO APPROX. 0.42 OF A MILE TO EXISTING PAD FOR SEA SNAKE "35" STATE 1H & 2H. FROM NORTHEAST CORNER OF PAD GO EAST FOLLOW FLAGS APPROX. 1369' TO NORTHWEST CORNER OF SEA SNAKE "35" STATE 3H. FROM THE NORTHEAST CORNER OF PAD GO EAST 898' TO THE NORTHWEST CORNER OF SEA SNAKE "35" STATE 4H. FROM THE EAST SIDE OF PAD GO EAST 30' TO THE NORTHWEST PAD CORNER FOR THIS LOCATION.

SURVEY NO. 3816A

MADRON SURVEYING, INC. 301 SOUTH CANAL (575) 234-3341 CARLSBAD, NEW MEXICO

SECTION 35, TOWNSHIP 23 SOUTH, RANGE 33 EAST, N.M.P.M.  
LEA COUNTY, STATE OF NEW MEXICO  
AERIAL PHOTO



NOT TO SCALE  
AERIAL PHOTO:  
GOOGLE EARTH  
FEBRUARY 2014

DEVON ENERGY PRODUCTION COMPANY, L.P.

**SEA SNAKE "35" STATE 8H**

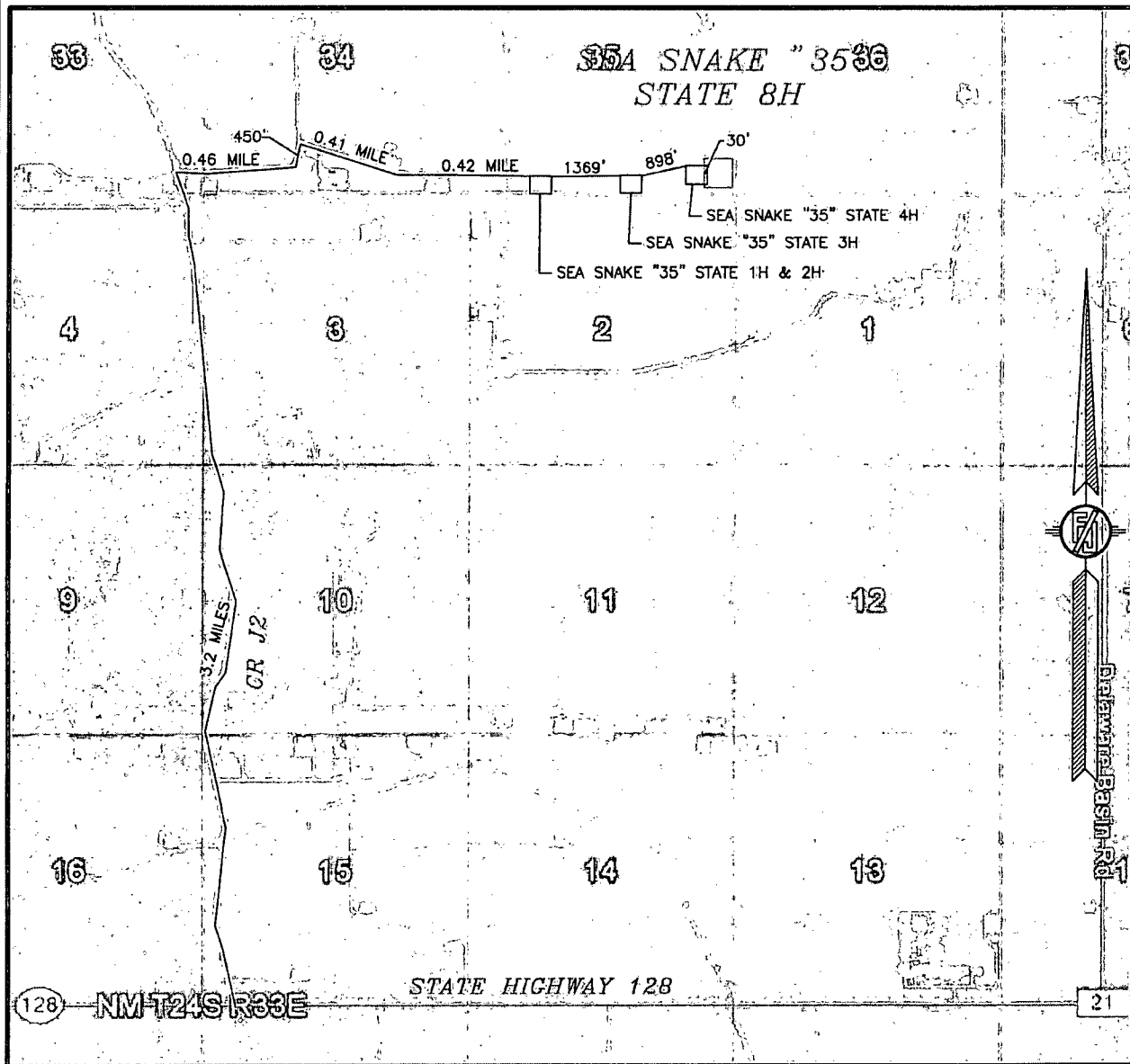
LOCATED 400 FT. FROM THE SOUTH LINE  
AND 400 FT. FROM THE EAST LINE OF  
SECTION 35, TOWNSHIP 23 SOUTH,  
RANGE 33 EAST, N.M.P.M.  
LEA COUNTY, STATE OF NEW MEXICO

JUNE 23, 2015

SURVEY NO. 3816A

MADRON SURVEYING, INC. 301 SOUTH CANAL (575) 234-3341 CARLSBAD, NEW MEXICO

SECTION 35, TOWNSHIP 23 SOUTH, RANGE 33 EAST, N.M.P.M.  
LEA COUNTY, STATE OF NEW MEXICO  
ACCESS AERIAL ROUTE MAP



NOT TO SCALE  
AERIAL PHOTO:  
GOOGLE EARTH  
FEBRUARY 2014

DEVON ENERGY PRODUCTION COMPANY, L.P.

SEA SNAKE "35" STATE 8H

LOCATED 400 FT. FROM THE SOUTH LINE  
AND 400 FT. FROM THE EAST LINE OF  
SECTION 35, TOWNSHIP 23 SOUTH,  
RANGE 33 EAST, N.M.P.M.  
LEA COUNTY, STATE OF NEW MEXICO

JUNE 23, 2015

SURVEY NO. 3816A

MADRON SURVEYING, INC. 301 SOUTH CANAL (575) 234-3341 CARLSBAD, NEW MEXICO