

District I  
1625 N. French Dr., Hobbs, NM 88240  
Phone: (575) 393-6161 Fax: (575) 393-0720  
District II  
811 S. First St., Artesia, NM 88210  
Phone: (575) 748-1283 Fax: (575) 748-9720  
District III  
1000 Rio Brazos Road, Aztec, NM 87410  
Phone: (505) 334-6173 Fax: (505) 334-6170  
District IV  
1220 S. St. Francis Dr., Santa Fe, NM 87505  
Phone: (505) 476-3460 Fax: (505) 476-3462

State of New Mexico  
Energy, Minerals & Natural Resources Department  
OIL CONSERVATION DIVISION  
1220 South St. Francis Dr.  
Santa Fe, NM 87505

HOBBS OCD

Form C-102

Revised August 1, 2011

Submit one copy to appropriate

District Office

RECEIVED

☐ AMENDED REPORT

WELL LOCATION AND ACREAGE DEDICATION PLAT

<sup>1</sup> API Number <b>302025-42752</b>	<sup>2</sup> Pool Code 97784	<sup>3</sup> Pool Name WC-025 G-06 S253201M; Upper Bone Spring
<sup>4</sup> Property Code <b>39747</b>	<sup>5</sup> Property Name <b>BELL LAKE 19 STATE</b>	<sup>6</sup> Well Number <b>11H</b>
<sup>7</sup> OGRID No. <b>6137</b>	<sup>8</sup> Operator Name <b>DEVON ENERGY PRODUCTION COMPANY, L.P.</b>	<sup>9</sup> Elevation <b>3541.8</b>

<sup>10</sup> Surface Location

UL or lot no.	Section	Township	Range	Lot Idn	Feet from the	North/South line	Feet from the	East/West line	County
<b>P</b>	<b>19</b>	<b>24 S</b>	<b>33 E</b>		<b>200</b>	<b>SOUTH</b>	<b>575</b>	<b>EAST</b>	<b>LEA</b>

<sup>11</sup> Bottom Hole Location If Different From Surface

UL or lot no.	Section	Township	Range	Lot Idn	Feet from the	North/South line	Feet from the	East/West line	County
<b>A</b>	<b>19</b>	<b>24 S</b>	<b>33 E</b>		<b>330</b>	<b>NORTH</b>	<b>380</b>	<b>EAST</b>	<b>LEA</b>

<sup>12</sup> Dedicated Acres	<sup>13</sup> Joint or Infill	<sup>14</sup> Consolidation Code	<sup>15</sup> Order No.
<b>160 ac</b>			

No allowable will be assigned to this completion until all interests have been consolidated or a non-standard unit has been approved by the division.

<p>N89°38'55"E 2598.20 FT</p> <p>NW CORNER SEC. 19 LAT. = 32.2104308°N LONG. = 103.6198104°W NMSP EAST (FT) N = 441021.26 E = 762016.93</p> <p>LOT 1</p>		<p>N89°38'56"E 2640.45 FT</p> <p>N Q CORNER SEC. 19 LAT. = 32.2104269°N LONG. = 103.6114116°W NMSP EAST (FT) N = 441037.19 E = 764614.58</p> <p>LOT 2</p>		<p>NE CORNER SEC. 19 LAT. = 32.2104223°N LONG. = 103.6028763°W NMSP EAST (FT) N = 441053.37 E = 767254.48</p> <p>LOT 3</p>	
<p>W Q CORNER SEC. 19 LAT. = 32.2031713°N LONG. = 103.6198178°W NMSP EAST (FT) N = 438380.31 E = 762032.15</p> <p>LOT 4</p>		<p>SW CORNER SEC. 19 LAT. = 32.1959126°N LONG. = 103.6198270°W NMSP EAST (FT) N = 435739.65 E = 762046.84</p> <p>LOT 5</p>			
<p>NOTE: LATITUDE AND LONGITUDE COORDINATES ARE SHOWN USING THE NORTH AMERICAN DATUM OF 1983 (NAD83). LISTED NEW MEXICO STATE PLANE EAST COORDINATES ARE GRID (NAD83). BASIS OF BEARING AND DISTANCES USED ARE NEW MEXICO STATE PLANE EAST COORDINATES MODIFIED TO THE SURFACE.</p>		<p><b>BOTTOM OF HOLE</b> LAT. = 32.2095161°N LONG. = 103.6041038°W NMSP EAST (FT) N = 440741.10 E = 766877.07</p> <p><b>BELL LAKE "19" STATE 11H</b> ELEV. = 3541.8' LAT. = 32.1964680°N (NAD83) LONG. = 103.6047188°W NMSP EAST (FT) N = 435973.02 E = 766719.02</p> <p><b>SURFACE LOCATION</b></p>			
<p>S89°36'40"W 2608.81 FT</p>		<p>S89°33'54"W 2641.00 FT</p>			

**<sup>16</sup> OPERATOR CERTIFICATION**

I hereby certify that the information contained herein is true and complete to the best of my knowledge and belief, and that this organization either owns a working interest or undivided mineral interest in the land including the proposed bottom hole location or has a right to drill this well at this location pursuant to a contract with an owner of such a mineral or working interest, or to a voluntary pooling agreement or a compulsory pooling order heretofore entered by the division.

Signature \_\_\_\_\_ Date \_\_\_\_\_

**Trina C. Couch, Regulatory Analyst**

Printed Name \_\_\_\_\_

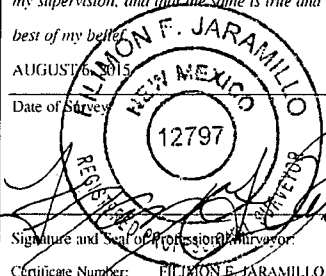
trina.couch@dmv.com

E-mail Address \_\_\_\_\_

**<sup>18</sup> SURVEYOR CERTIFICATION**

I hereby certify that the well location shown on this plat was plotted from field notes of actual surveys made by me or under my supervision, and that the same is true and correct to the best of my belief.

**ALMON F. JARAMILLO**  
AUGUST 6, 2015  
Date of Survey

Signature and Seal of Professional Surveyor: 

Certificate Number: **PILMON F. JARAMILLO, PLS 12797**

SURVEY NO. 4063A

AUG 31 2015

# SITE MAP

175' NORTH  
OFFSET  
EL. 3541.1'

EL. 3540.5' TOPSOIL AREA 30' PROPOSED PAD EL. 3540.5'

N89°54'51"E 520.11 FT

210' 175' 50' 50' 210'

**BELL LAKE "19" STATE 11H**  
ELEV. = 3541.8'  
4.300± ACRES

BELL LAKE "19" STATE 9H

BELL LAKE "19" STATE 7H

LAT. = 32.1964680°N (NAD83)  
LONG. = 103.6047188°W  
NMSP EAST (FT)  
N = 435973.02  
E = 766719.02

210' WEST OFFSET EL. 3541.5'

PROPOSED 722 LF ACCESS ROAD TO EXISTING PAD

360.17 FT

185'

N00°00'16"W

360.16 FT

589°54'47"W 520.09 FT

EL. 3543.1' EL. 3542.3'

185' SOUTH OFFSET EL. 3542.3'

BERM

POWER LINE

210' EAST OFFSET EL. 3541.4'

500'00.02'E 360.16 FT

2-4" POLYS

SEC. 19  
SEC. 30

SCALE 1" = 100'

FROM THE INTERSECTION OF STATE HIGHWAY 128 AND CR 1 (ORLA HIGHWAY) GO EAST ON STATE HIGHWAY 128 APPROX. 3.0 MILES TO A LEASE ROAD ON RIGHT (SOUTH), TURN SOUTH ON LEASE ROAD GO APPROX. 1.0 MILE TO A LEASE ROAD ON LEFT (EAST), TURN EAST ON LEASE ROAD GO APPROX. 0.6 OF A MILE TO THE SOUTHEAST CORNER OF EXISTING PAD, IS A ROAD LATH WITH RED & WHITE FLAGGING, FOLLOW ROAD LATHS EAST APPROX. .722' TO THE SOUTHWEST PAD CORNER FOR THIS LOCATION.

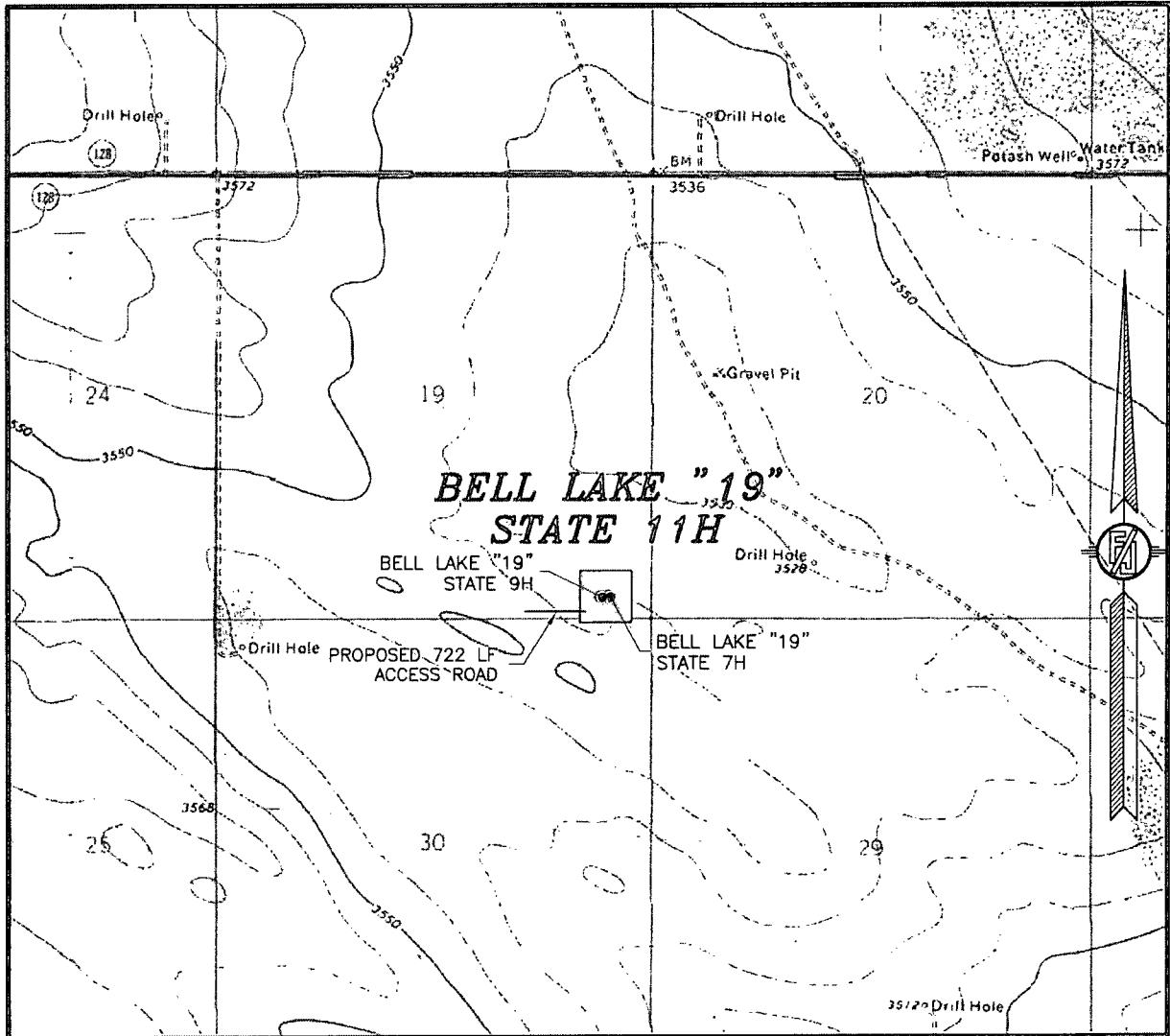
**BELL LAKE "19" STATE 11H**  
LOCATED 200 FT. FROM THE SOUTH LINE  
AND 575 FT. FROM THE EAST LINE OF  
SECTION 19, TOWNSHIP 24 SOUTH,  
RANGE 33 EAST, N.M.P.M.  
LEA COUNTY, STATE OF NEW MEXICO

SURVEY NO. 4063A

**MADRON SURVEYING, INC.** 301 SOUTH CANAL  
(575) 234-3341

CARLSBAD, NEW MEXICO

SECTION 19, TOWNSHIP 24 SOUTH, RANGE 33 EAST, N.M.P.M.  
LEA COUNTY, STATE OF NEW MEXICO  
LOCATION VERIFICATION MAP



USGS QUAD MAP:  
PADUCA BREAKS NW

NOT TO SCALE

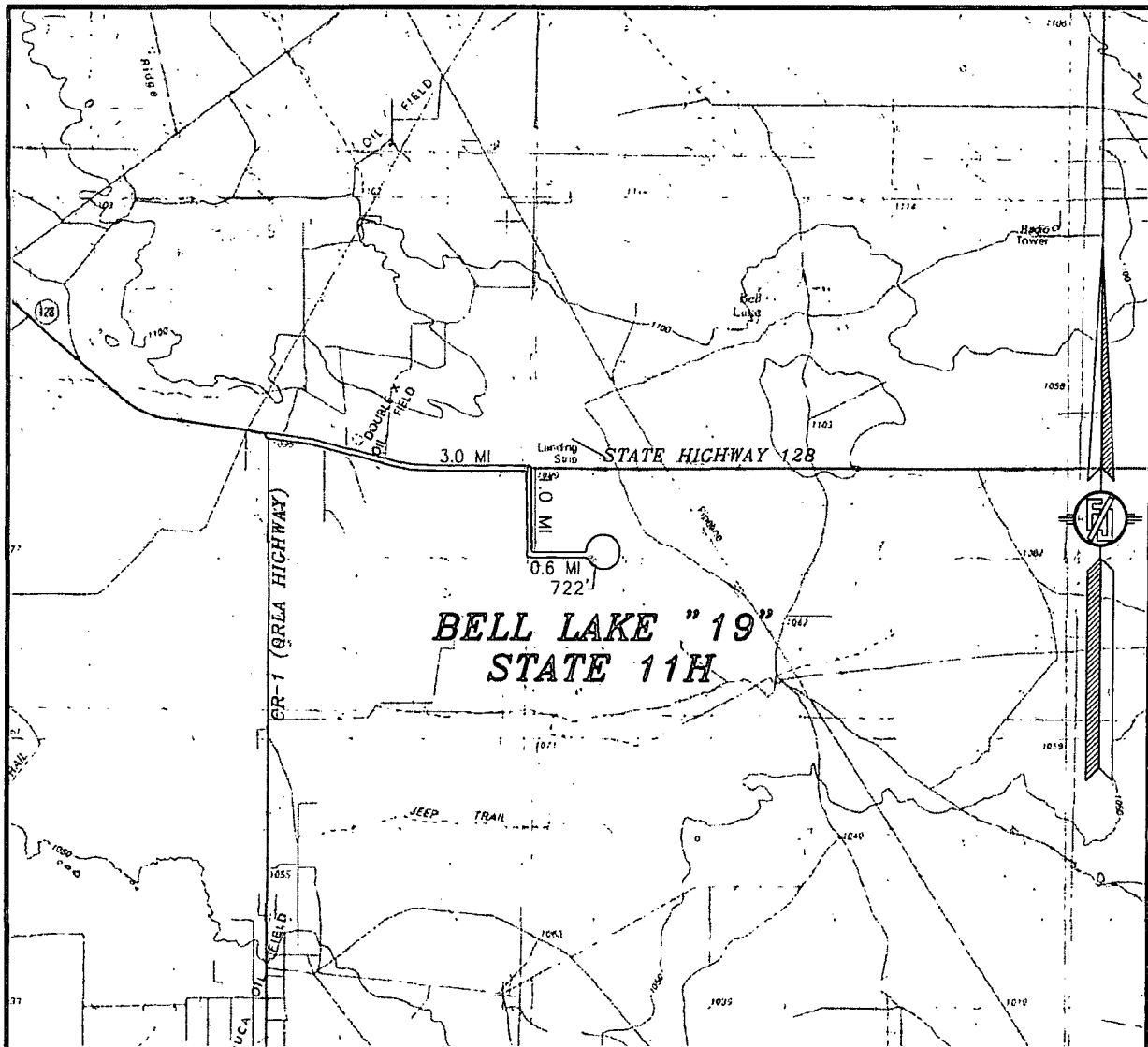
DEVON ENERGY PRODUCTION COMPANY, L.P.  
**BELL LAKE "19" STATE 11H**  
LOCATED 200 FT. FROM THE SOUTH LINE  
AND 575 FT. FROM THE EAST LINE OF  
SECTION 19, TOWNSHIP 24 SOUTH,  
RANGE 33 EAST, N.M.P.M.  
LEA COUNTY, STATE OF NEW MEXICO

AUGUST 6, 2015

SURVEY NO. 4063A

MADRON SURVEYING, INC. 301 SOUTH CANAL (575) 234-3341 CARLSBAD, NEW MEXICO

SECTION 19, TOWNSHIP 24 SOUTH, RANGE 33 EAST, N.M.P.M.  
LEA COUNTY, STATE OF NEW MEXICO  
VICINITY MAP



DISTANCES IN MILES

NOT TO SCALE

DEVON ENERGY PRODUCTION COMPANY, L.P.

**BELL LAKE "19" STATE 11H**

LOCATED 200 FT. FROM THE SOUTH LINE

AND 575 FT. FROM THE EAST LINE OF

SECTION 19, TOWNSHIP 24 SOUTH,

RANGE 33 EAST, N.M.P.M.

LEA COUNTY, STATE OF NEW MEXICO

**DIRECTIONS TO LOCATION**

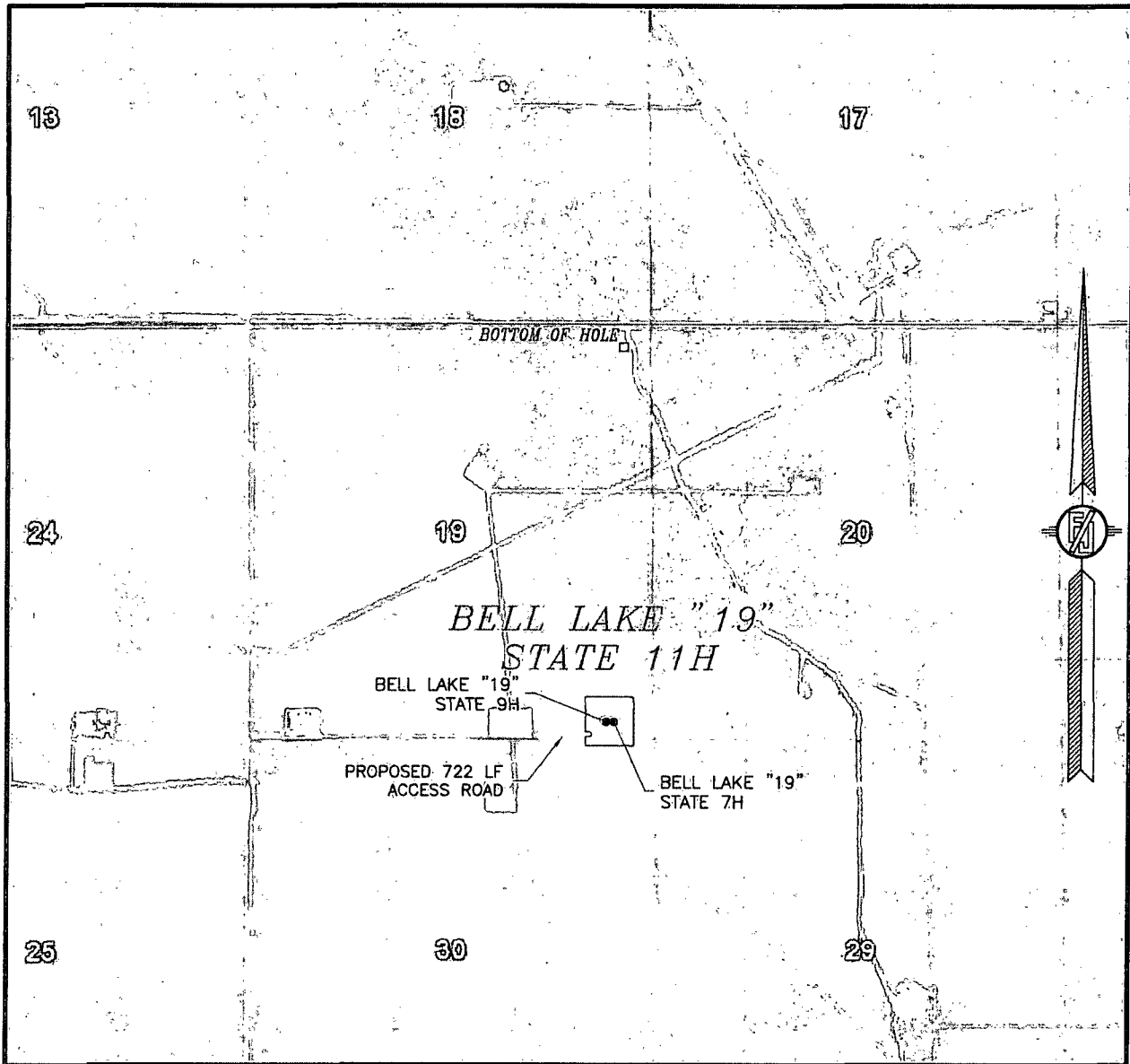
FROM THE INTERSECTION OF STATE HIGHWAY 128 AND CR 1 (ORLA HIGHWAY) GO EAST ON STATE HIGHWAY 128 APPROX. 3.0 MILES TO A LEASE ROAD ON RIGHT (SOUTH), TURN SOUTH ON LEASE ROAD GO APPROX. 1.0 MILE TO A LEASE ROAD ON LEFT (EAST), TURN EAST ON LEASE ROAD GO APPROX. 0.6 OF A MILE TO THE SOUTHEAST CORNER OF EXISTING PAD, IS A ROAD LATH WITH RED & WHITE FLAGGING, FOLLOW ROAD LATHS EAST APPROX. 722' TO THE SOUTHWEST PAD CORNER FOR THIS LOCATION.

AUGUST 6, 2015

SURVEY NO. 4063A

MADRON SURVEYING, INC. 301 SOUTH CANAL (575) 234-3341 CARLSBAD, NEW MEXICO

SECTION 19, TOWNSHIP 24 SOUTH, RANGE 33 EAST, N.M.P.M.  
LEA COUNTY, STATE OF NEW MEXICO  
**AERIAL PHOTO**



NOT TO SCALE  
AERIAL PHOTO:  
GOOGLE EARTH  
FEBRUARY 2014

**DEVON ENERGY PRODUCTION COMPANY, L.P.**

**BELL LAKE "19" STATE 11H**

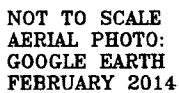
LOCATED 200 FT. FROM THE SOUTH LINE  
AND 575 FT. FROM THE EAST LINE OF  
SECTION 19, TOWNSHIP 24 SOUTH,  
RANGE 33 EAST, N.M.P.M.  
LEA COUNTY, STATE OF NEW MEXICO

AUGUST 6, 2015

SURVEY NO. 4063A

MADRON SURVEYING, INC. 301 SOUTH CANAL (575) 234-3341 CARLSBAD, NEW MEXICO

# ACCESS AERIAL ROUTE MAP



**BELL LAKE "19" STATE 11H**

LOCATED 200 FT. FROM THE SOUTH LINE  
AND 575 FT. FROM THE EAST LINE OF  
SECTION 19, TOWNSHIP 24 SOUTH,  
RANGE 33 EAST, N.M.P.M.  
LEA COUNTY, STATE OF NEW MEXICO

SURVEY NO. 4063A.

MADRON SURVEYING, INC. 301 SOUTH CANAL CARLSBAD, NEW MEXICO  
(575) 234-3341

301 SOUTH CANAL  
(575) 234-3341