

District I
1625 N. French Dr., Hobbs, NM 88240
Phone: (575) 393-6161 Fax: (575) 393-0720
District II
311 S. First St., Artesia, NM 88210
Phone: (575) 748-1283 Fax: (575) 748-9720
District III
1000 Rio Brazos Road, Aztec, NM 87410
Phone: (505) 334-6178 Fax: (505) 334-6170
District IV
1220 S. St. Francis Dr., Santa Fe, NM 87505
Phone: (505) 476-3460 Fax: (505) 476-3462

State of New Mexico
Energy, Minerals & Natural Resources Department
OIL CONSERVATION DIVISION
1220 South St. Francis Dr.
Santa Fe, NM 87505

HOBBS OCD

AUG 21 2015

Form C-102
Revised August 1, 2011
Submit one copy to appropriate
District Office

RECEIVED

☐ AMENDED REPORT

WELL LOCATION AND ACREAGE DEDICATION PLAT

| | | |
|--|--|--|
| ¹ API Number 30-029-42754 | ² Pool Code 97784 | ³ Pool Name WC-025 G-06 S253201M; Upper Bone Spring |
| ⁴ Property Code 79747 | ⁵ Property Name BELL LAKE 19 STATE | ⁶ Well Number 7H |
| ⁷ OGRID No. 6137 | ⁸ Operator Name DEVON ENERGY PRODUCTION COMPANY, L.P. | ⁹ Elevation 3542.0 |

¹⁰ Surface Location

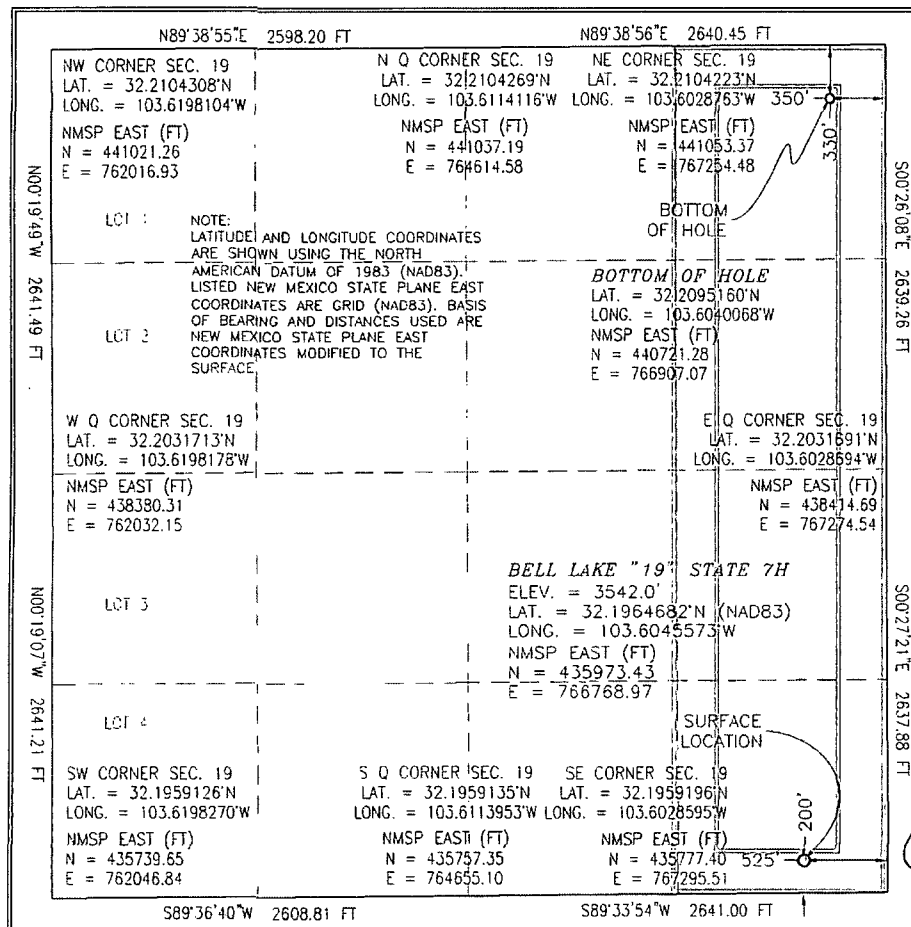
| UL or lot no. | Section | Township | Range | Lot Idn | Feet from the | North/South line | Feet from the | East/West line | County |
|---------------|-----------|-------------|-------------|---------|---------------|------------------|---------------|----------------|------------|
| P | 19 | 24 S | 33 E | | 200 | SOUTH | 525 | EAST | LEA |

¹¹ Bottom Hole Location If Different From Surface

| UL or lot no. | Section | Township | Range | Lot Idn | Feet from the | North/South line | Feet from the | East/West line | County |
|---------------|-----------|-------------|-------------|---------|---------------|------------------|---------------|----------------|------------|
| A | 19 | 24 S | 33 E | | 330 | NORTH | 350 | EAST | LEA |

| | | | |
|--|-------------------------------|----------------------------------|-------------------------|
| ¹² Dedicated Acres 160 ac | ¹³ Joint or Infill | ¹⁴ Consolidation Code | ¹⁵ Order No. |
|--|-------------------------------|----------------------------------|-------------------------|

No allowable will be assigned to this completion until all interests have been consolidated or a non-standard unit has been approved by the division.



¹⁷ OPERATOR CERTIFICATION

I hereby certify that the information contained herein is true and complete to the best of my knowledge and belief, and that this organization either owns a working interest or unleased mineral interest in the land including the proposed bottom hole location or has a right to drill this well at this location pursuant to a contract with an owner of such a mineral or working interest, or to a voluntary pooling agreement or a compulsory pooling order heretofore entered by the division.

Trina C. Couch 8/20/15
Signature Date

Trina C. Couch, Regulatory Analyst

Printed Name

trina.couch@dmv.com

E-mail Address

¹⁸ SURVEYOR CERTIFICATION

I hereby certify that the well location shown on this plat was plotted from field notes of actual surveys made by me or under my supervision, and that the same is true and correct to the best of my belief.

AUGUST 6, 2015
Date of Survey

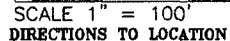
Trina C. Couch
Signature and Seal of Professional Surveyor

Certificate Number: FILIMON F. JARAMILLO, PLS 12797

SURVEY NO. 3756A

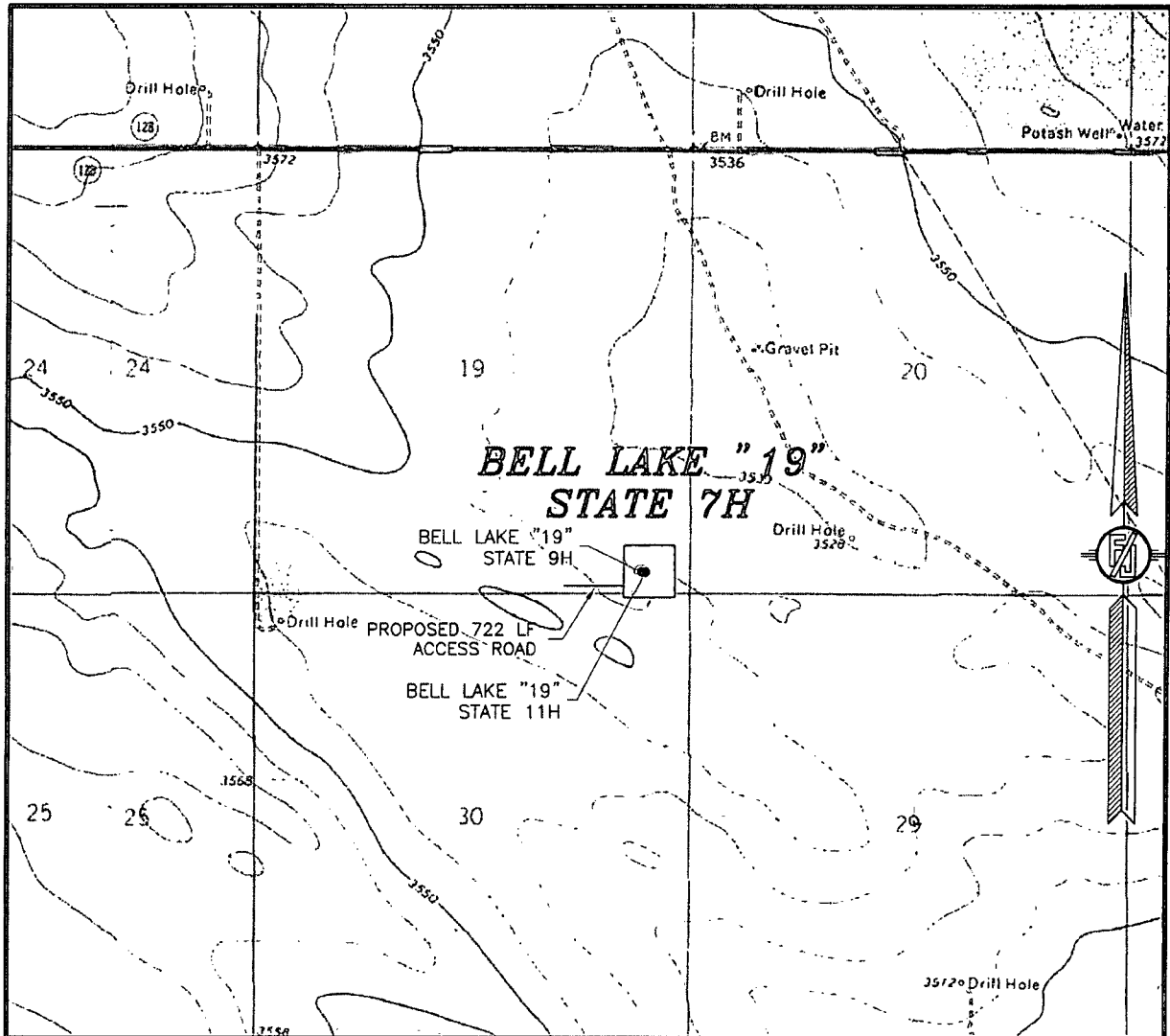
AUG 31 2015

NOTE: LATITUDE AND LONGITUDE COORDINATES ARE SHOWN USING THE NORTH AMERICAN DATUM OF 1983 (NAD83). LISTED NEW MEXICO STATE PLANE EAST COORDINATES ARE GRID (NAD83). BASIS OF BEARING AND DISTANCES USED ARE NEW MEXICO STATE PLANE EAST COORDINATES MODIFIED TO THE SURFACE



MADRON SURVEYING, INC. 301 SOUTH CANAL (575) 234-3341 CARLSBAD, NEW MEXICO

SECTION 19, TOWNSHIP 24 SOUTH, RANGE 33 EAST, N.M.P.M.
LEA COUNTY, STATE OF NEW MEXICO
LOCATION VERIFICATION MAP



USGS QUAD MAP:
PADUCA BREAKS NW

NOT TO SCALE

DEVON ENERGY PRODUCTION COMPANY, L.P.

BELL LAKE "19" STATE 7H

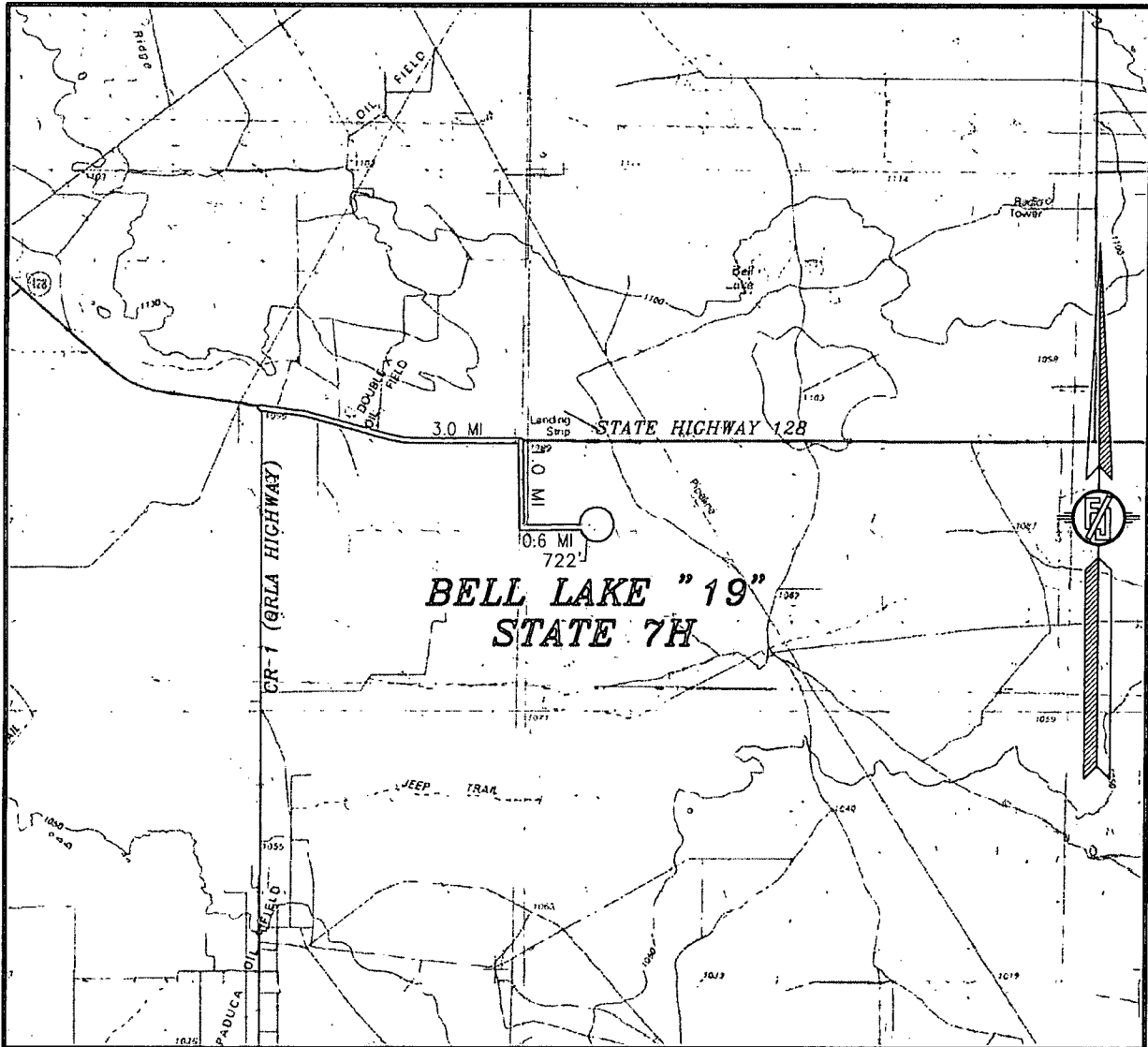
LOCATED 200 FT. FROM THE SOUTH LINE
AND 525 FT. FROM THE EAST LINE OF
SECTION 19, TOWNSHIP 24 SOUTH,
RANGE 33 EAST, N.M.P.M.
LEA COUNTY, STATE OF NEW MEXICO

AUGUST 6, 2015

SURVEY NO. 3756A

MADRON SURVEYING, INC. 301 SOUTH CANAL (575) 234-3341 CARLSBAD, NEW MEXICO

SECTION 19, TOWNSHIP 24 SOUTH, RANGE 33 EAST, N.M.P.M.
LEA COUNTY, STATE OF NEW MEXICO
VICINITY MAP



DISTANCES IN MILES

NOT TO SCALE

DEVON ENERGY PRODUCTION COMPANY, L.P.

BELL LAKE "19" STATE 7H

LOCATED 200 FT. FROM THE SOUTH LINE
AND 525 FT. FROM THE EAST LINE OF
SECTION 19, TOWNSHIP 24 SOUTH,
RANGE 33 EAST, N.M.P.M.
LEA COUNTY, STATE OF NEW MEXICO

DIRECTIONS TO LOCATION

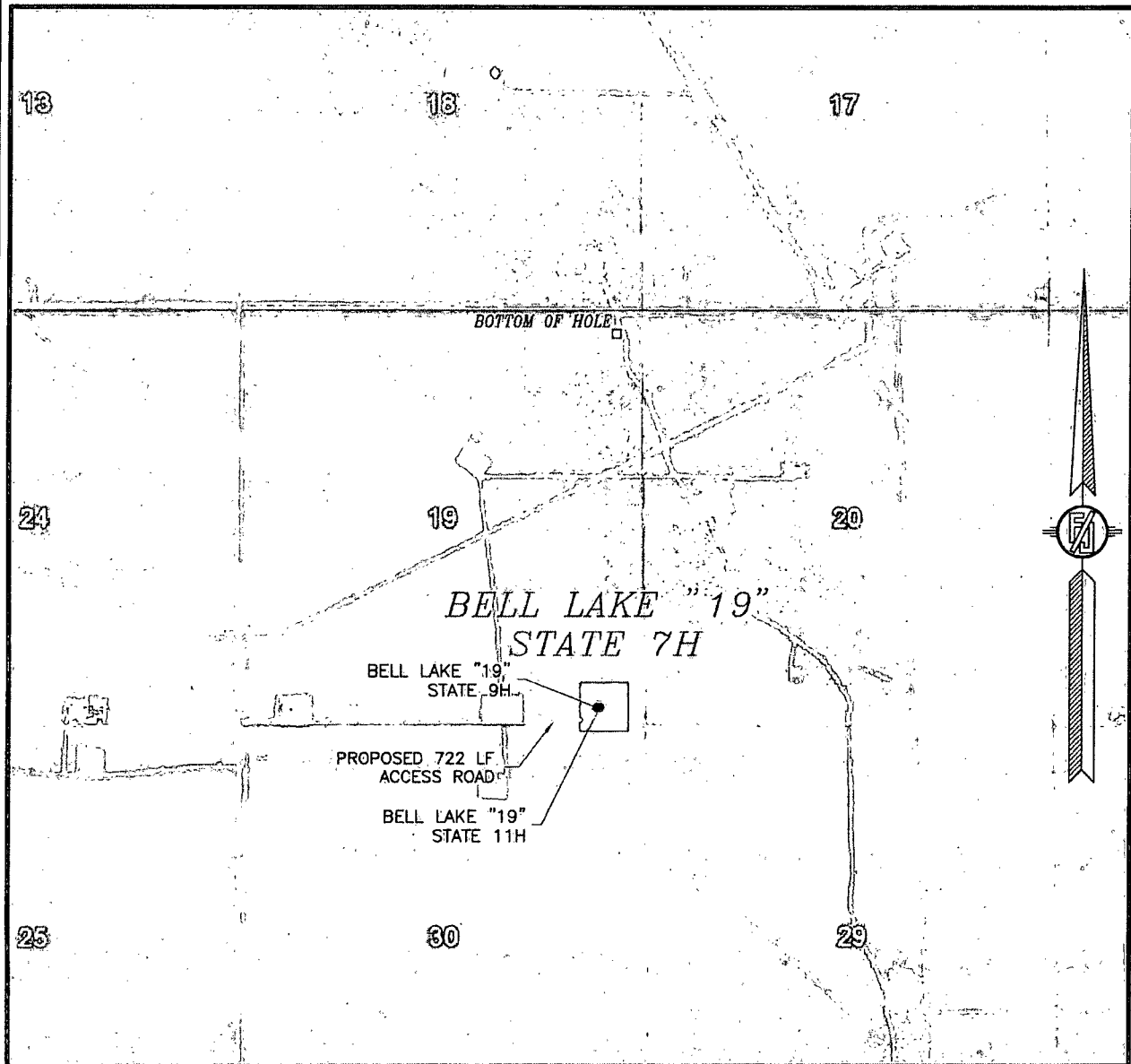
FROM THE INTERSECTION OF STATE HIGHWAY 128 AND CR 1 (ORLA HIGHWAY) GO EAST ON STATE HIGHWAY 128 APPROX. 3.0 MILES TO A LEASE ROAD ON RIGHT (SOUTH), TURN SOUTH ON LEASE ROAD GO APPROX. 1.0 MILE TO A LEASE ROAD ON LEFT (EAST), TURN EAST ON LEASE ROAD GO APPROX. 0.6 OF A MILE TO THE SOUTHEAST CORNER OF EXISTING PAD, IS A ROAD LATH WITH RED & WHITE FLAGGING, FOLLOW ROAD LATHS EAST APPROX. 722' TO THE SOUTHWEST PAD CORNER FOR THIS LOCATION.

AUGUST 6, 2015

SURVEY NO. 3756A

MADRON SURVEYING, INC. 301 SOUTH CANAL (575) 234-3341 CARLSBAD, NEW MEXICO

SECTION 19, TOWNSHIP 24 SOUTH, RANGE 33 EAST, N.M.P.M.
LEA COUNTY, STATE OF NEW MEXICO
AERIAL PHOTO



NOT TO SCALE
AERIAL PHOTO:
GOOGLE EARTH
FEBRUARY 2014

DEVON ENERGY PRODUCTION COMPANY, L.P.

BELL LAKE "19" STATE 7H

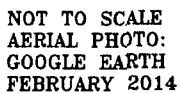
LOCATED 200 FT. FROM THE SOUTH LINE
AND 525 FT. FROM THE EAST LINE OF
SECTION 19, TOWNSHIP 24 SOUTH,
RANGE 33 EAST, N.M.P.M.
LEA COUNTY, STATE OF NEW MEXICO

AUGUST 6, 2015

SURVEY NO. 3756A

MADRON SURVEYING, INC. 301 SOUTH CANAL (575) 234-3341 CARLSBAD, NEW MEXICO

ACCESS AERIAL ROUTE MAP



BELL LAKE "19" STATE 7H

AUGUST 6, 2015

SURVEY NO. 3756A

MADRON SURVEYING, INC. 301 SOUTH CANAL (575) 234-3341 CARLSBAD, NEW MEXICO

301 SOUTH CANAL
(575) 234-3341