

DISTRICT I
1625 N. French Dr., Hobbs, NM 88240
Phone: (575) 393-6161 Fax: (575) 393-0720

DISTRICT II
811 S. First St., Artesia, NM 88210
Phone: (575) 748-1283 Fax: (575) 748-9720

DISTRICT III
1000 Rio Brazos Rd., Aztec, NM 87410
Phone: (505) 334-6178 Fax: (505) 334-6170

DISTRICT IV
1220 S. St. Francis Dr., Santa Fe, NM 87505
Phone: (505) 476-3460 Fax: (505) 476-3462

State of New Mexico
Energy, Minerals & Natural Resources Department
OIL CONSERVATION DIVISION
1220 South St. Francis Dr.
Santa Fe, New Mexico 87505

Form C-102
Revised August 1, 2011
Submit one copy to appropriate
District Office
☐ AMENDED REPORT

WELL LOCATION AND ACREAGE DEDICATION PLAT

API Number 30-045-025	Pool Code 9610	Pool Name SWD; Devonian
Property Code TBD	Property Name BRININSTOOL SWD	Well Number
OGRID No. 308339	Operator Name OWL SWD Operating, L.L.C.	Elevation 3710'

Surface Location

UL or lot no.	Section	Township	Range	Lot Idn	Feet from the	North/South line	Feet from the	East/West line	County
4	19	23S	33E		784	S	419	W	LEA

Bottom Hole Location If Different From Surface

UL or lot no.	Section	Township	Range	Lot Idn	Feet from the	North/South line	Feet from the	East/West line	County

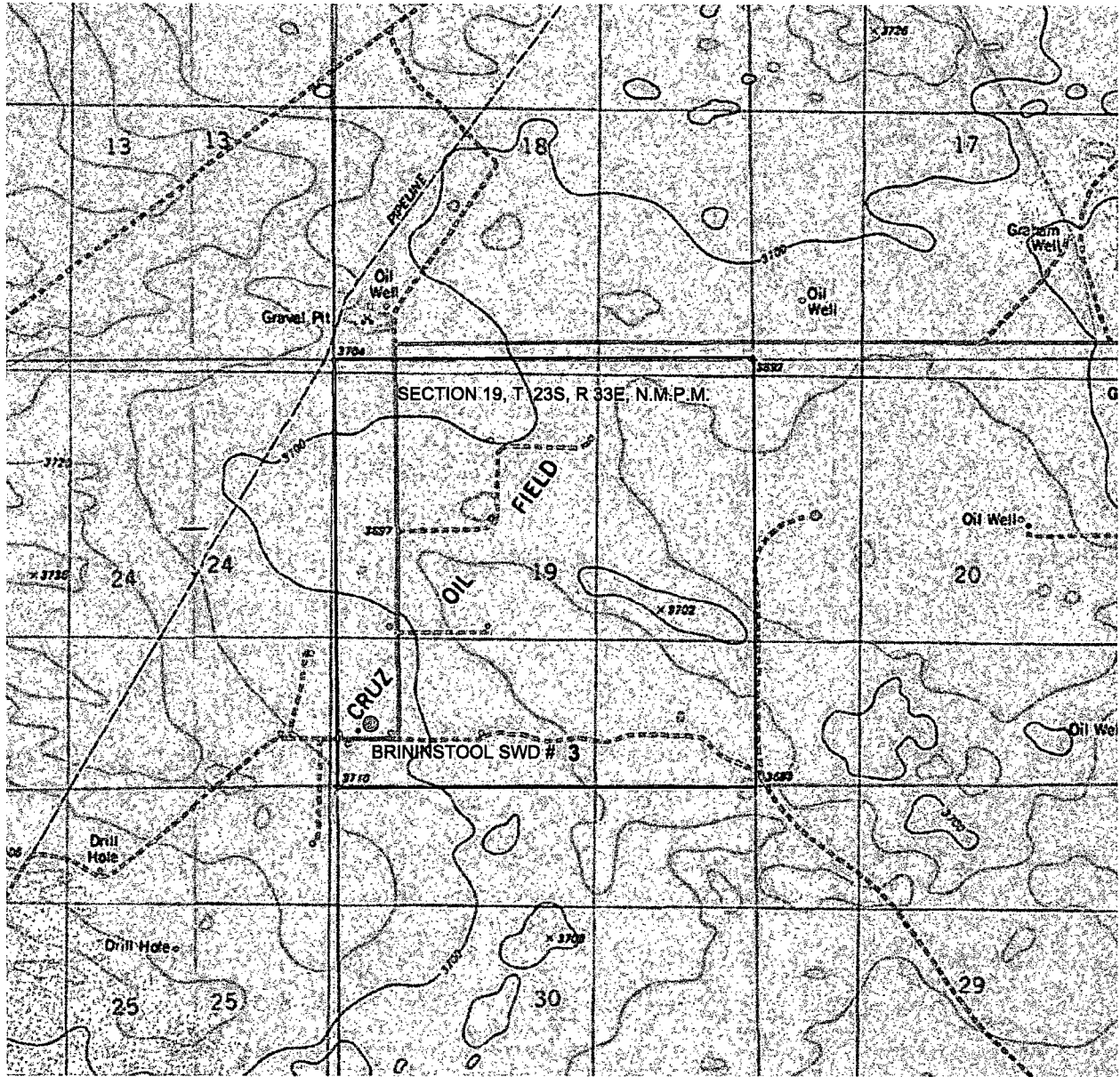
Dedicated Acres	Joint or Infill	Consolidated Code	Order No.
37.89			

No allowable will be assigned to this completion until all interests have been consolidated or a non-standard unit has been approved by the division.

<p>BRININSTOOL #2 NMSP-E (NAD 83) N (Y) = 468180.8' E (X) = 762278.4' LAT. = 32°17'06.28"N LONG. = 103°37'06.17"W</p> <p>NMSP-E (NAD 27) N (Y) = 468121.2' E (X) = 721094.9' LAT. = 32.2849549°N LONG. = 103.6178983°W</p>	<p>OPERATOR CERTIFICATION</p> <p><i>I hereby certify that the information contained herein is true and complete to the best of my knowledge and belief, and that this organization either owns a working interest or unleased mineral interest in the land including the proposed bottom hole location or has a right to drill this well at this location pursuant to a contract with an owner of such a mineral or working interest, or to voluntary pooling agreement or a compulsory pooling order heretofore entered by the division.</i></p> <p>Signature: Date: 7/23/2015</p> <p>Print Name: Ben Stone</p> <p>E-mail Address: ben@sosconsulting.us</p>		
	<p>SURVEYORS CERTIFICATION</p> <p><i>I hereby certify that the well location shown on this plat was plotted from field notes of actual surveys made by me or under my supervision, and that the same is true and correct to the best of my belief.</i></p> <p>NOVEMBER 26, 2014 Date of Survey</p> <p>Signature and Seal of Professional Surveyor: </p> <p>Job No.: WTC50375 JAMES E. TOMPKINS 14729 Certificate Number</p>		

AUG 31 2015

LOCATION VERIFICATION MAP



0 1000 2000 4000

GRAPHIC SCALE 1" = 2000'

SECTION 19, T 23S, R 33E, N.M.P.M.

COUNTY: LEA STATE: NM

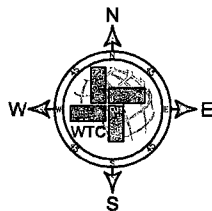
DESCRIPTION: 784' FSL & 419' FWL

OPERATOR: RKI EXPLORATION & PRODUCTION

WELL NAME: BRININSTOOL SWD-23

DRIVING DIRECTIONS:

FROM JAL AT THE INTERSECTION OF STATE HIGHWAY 18 AND W NM HIGHWAY 128. GO WEST/NORTHWEST ON W NM HIGHWAY 128 FOR 24.0 MILES TO A LEASE ROAD (BRININSTOOL ROAD). TURN RIGHT. GO NORTH ON LEASE ROAD (BRININSTOOL ROAD) 4.2 MILES TO A LEASE ROAD. TURN LEFT. GO WEST/ NORTHWEST FOR 2.8 MILES. LOCATION FLAG IS 187.0 FEET NORTH.



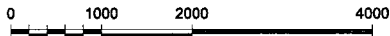
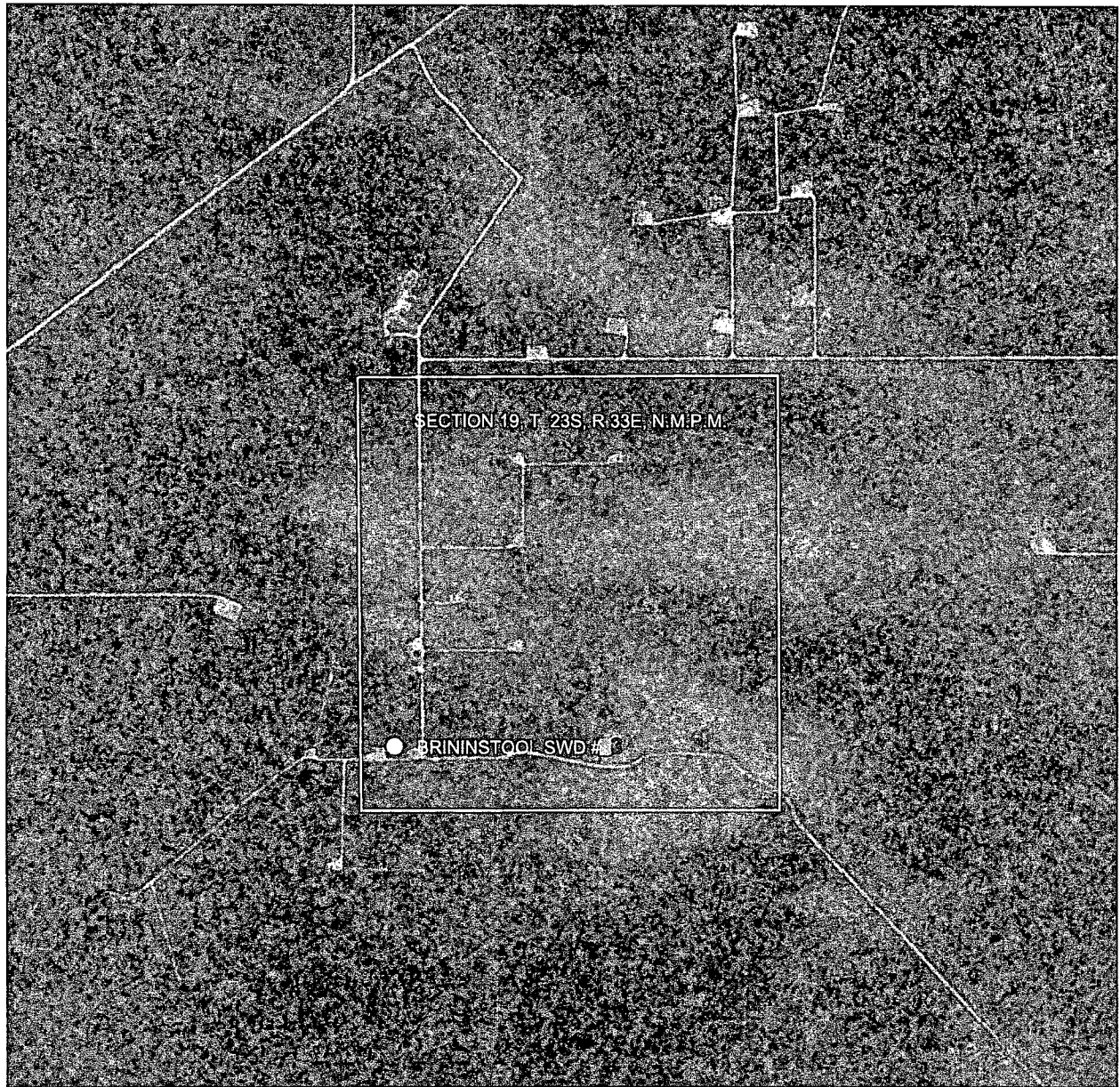
WTC, INC.

405 S.W. 1st Street
Andrews, TX 79714
(432) 523-2181



JOB No.: WTC50375

AERIAL MAP



GRAPHIC SCALE 1" = 2000'

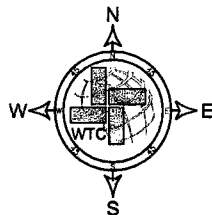
SECTION 19, T. 23S, R. 33E, N.M.P.M.

COUNTY: LEA STATE: NM

DESCRIPTION: 784' FSL & 419' FWL

OPERATOR: RKI EXPLORATION & PRODUCTION

WELL NAME: BRININSTOOL SWD-23



DRIVING DIRECTIONS:

FROM JAL AT THE INTERSECTION OF STATE HIGHWAY 18 AND W NM HIGHWAY 128. GO WEST/NORTHWEST ON W NM HIGHWAY 128 FOR 24.0 MILES TO A LEASE ROAD (BRININSTOOL ROAD). TURN RIGHT. GO NORTH ON LEASE ROAD (BRININSTOOL ROAD) 4.2 MILES TO A LEASE ROAD TURN LEFT. GO WEST/ NORTHWEST FOR 2.8 MILES. LOCATION FLAG IS 187.0 FEET NORTH.



W T C, INC.

405 S.W. 1st Street
Andrews, TX 79714
(432) 523-2181



JOB No.: WTC50375