

District I
1625 N. French Dr., Hobbs, NM 88240
Phone: (575) 393-6161 Fax: (575) 393-0720
District II
811 S. First St., Artesia, NM 88210
Phone: (575) 748-1283 Fax: (575) 748-9720
District III
1000 Rio Brazos Road, Aztec, NM 87410
Phone: (505) 334-6178 Fax: (505) 334-6170
District IV
1220 S. St. Francis Dr., Santa Fe, NM 87505
Phone: (505) 476-3460 Fax: (505) 476-3462

State of New Mexico

Form C-101
Revised July 18, 2013

Energy Minerals and Natural Resources

Oil Conservation Division

1220 South St. Francis Dr.

Santa Fe, NM 87505

HOBBS OGD
SEP 02 2015

☐ AMENDED REPORT

APPLICATION FOR PERMIT TO DRILL, RE-ENTER, DEEPEN, PLUGBACK, OR ADD A ZONE

Operator Name and Address Lynx Petroleum Consultants, Inc. P.O. Box 1708 Hobbs, NM 88241		OGRID Number 13645
		API Number 30-025-29865
Property Code	Property Name Airpath AEM State No. 1	Well No 001

Surface Location

UL - Lot	Section	Township	Range	Lot Idn	Feet from	N/S Line	Feet From	E/W Line	County
P	8	18S	36E		660	S	660	E	Lea

Proposed Bottom Hole Location

UL - Lot	Section	Township	Range	Lot Idn	Feet from	N/S Line	Feet From	E/W Line	County

Pool Information

SWD, Devonian	96/01
---------------	-------

Additional Well Information

11 Work Type E	12 Well Type SWD-1572	13 Cable/Rotary R	14 Lease Type S	15 Ground Level Elevation 3838' GL
19 Multiple N	17 Proposed Depth 13004'	18 Formation Devonian	19 Contractor Undesignated	20 Spud Date Undesignated
Depth to Ground Water 53' Average		Distance to nearest fresh water well 1/2 Mile		Distance to nearest surface water 50 Miles

☒ We will be using a closed-loop system in lieu of lined pits

21 Proposed Casing and Cement Program

Type	Hole Size	Casing Size	Casing Weight/ft	Setting Depth	Sacks of Cement	Estimated TOC
Surface	17 1/2	13 3/8	54.5#	425'	425 sxs	Surface
Intermediate	11	8 5/8	32	3805	1500	Surface
Production	11	5 1/2	17	12850	1400	3500'

Casing/Cement Program: Additional Comments

212 Proposed Blowout Prevention Program

Type	Working Pressure	Test Pressure	Manufacturer
See Attached	5000 psi	1500 pis	Cameron or Equivalent

I hereby certify that the information given above is true and complete to the best of my knowledge and belief.

I further certify that I have complied with 19.15.14.9 (A) NMAC ☒, and/or 19.15.14.9(B) NMAC ☒, if applicable.

Signature:

Printed name: Debbie McKelvey

Title: Agent

E-mail Address: debmckelvey@earthlink.net

Date: 9/2/2015

Phone: 575-392-3575

OIL CONSERVATION DIVISION

: Approved By

Title: Petroleum Engineer

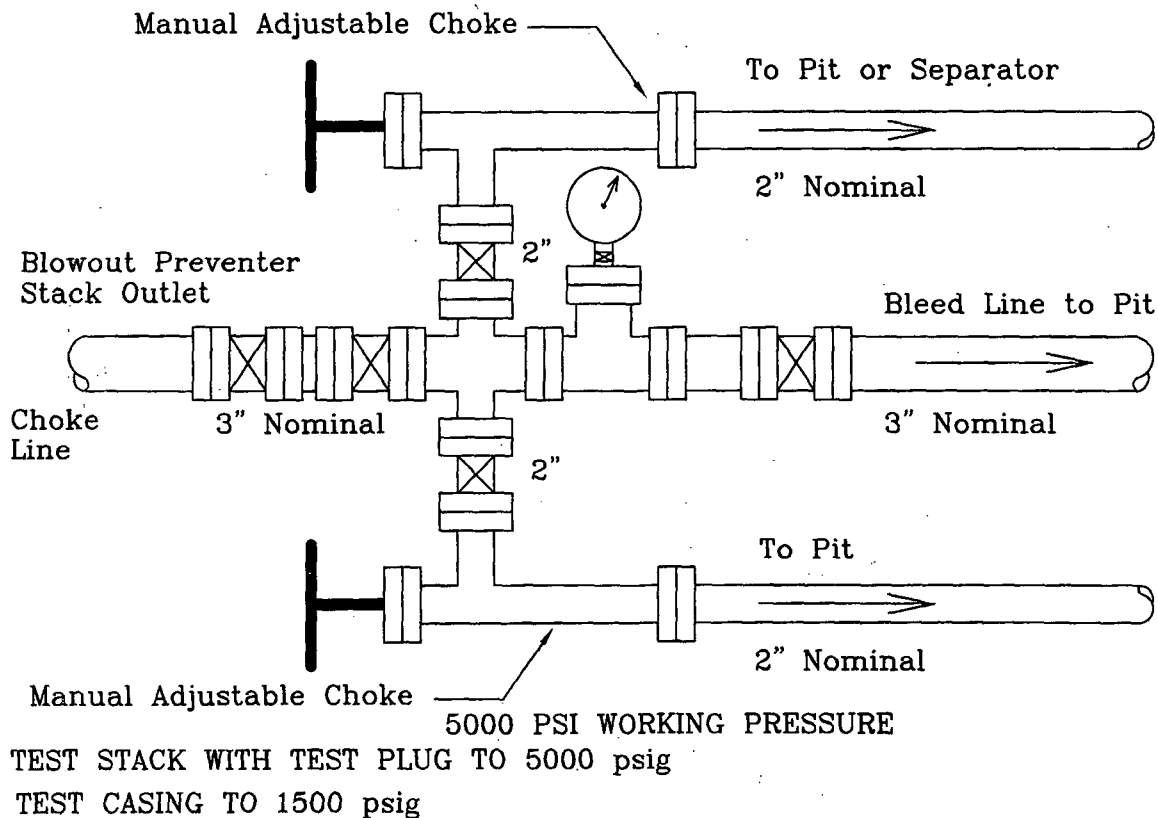
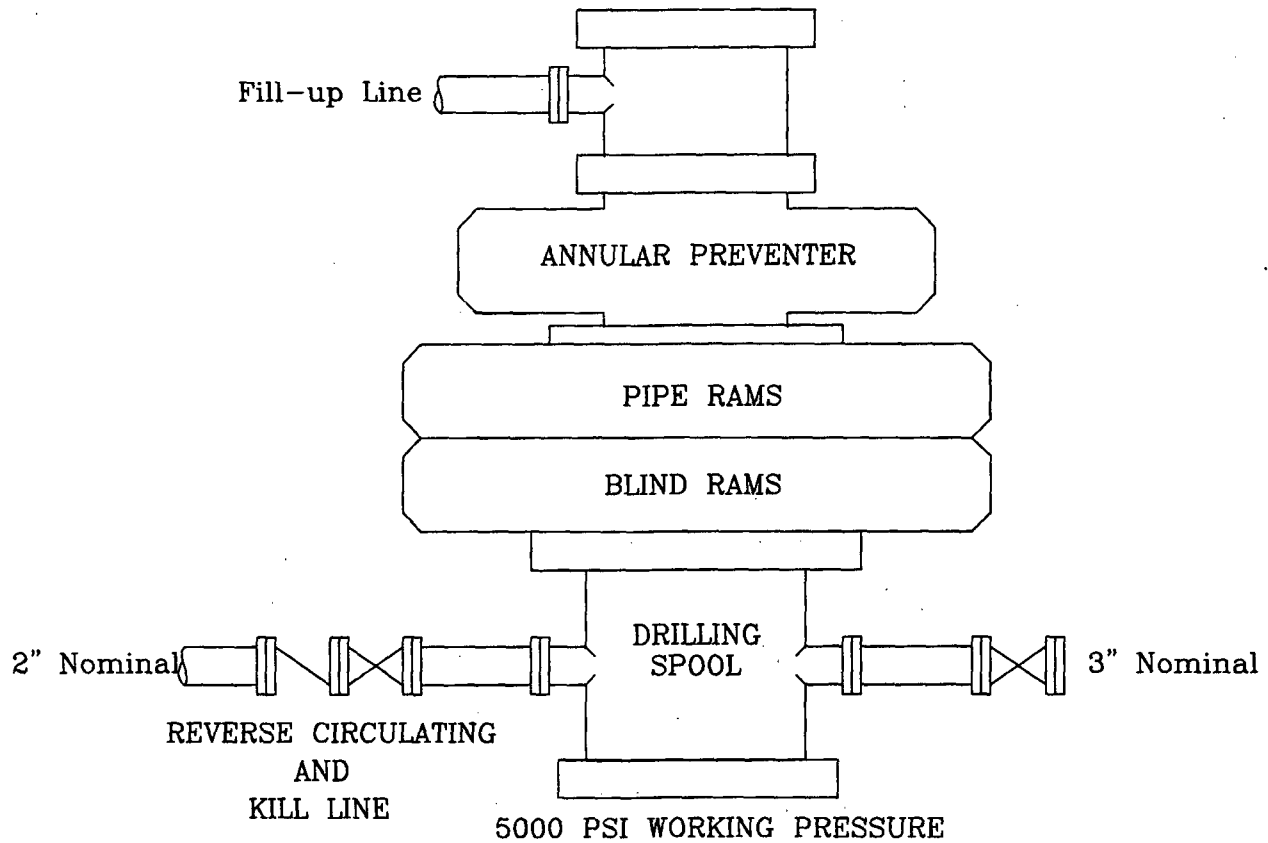
Approved Date: 09/04/15

Expiration Date: 09/04/17

Conditions of Approval Attached

SEP 09 2015

PRODUCTION HOLE SECTION



Location: SE/4 SE/4
Sec. 8, T-18S, R-36E
Lea County, NM

Airpath AEM State No. 1
BLOWOUT PREVENTER AND CHOKE MANIFOLD

9/1/2015

Scale: None

**Airpath AEM State No. 1
Re-Entry &
Completion Procedure**

API No.: 30-025-29865

Location: 660' FSL & 660' FEL Section 8, T-18S, R-36E
Lea County, New Mexico

Elevation: 3838' GL

KB: +15'

TD: 13,004'

PBTD: (P&A)

Casing & Cement:

13-3/8", 54.5#/ft., J-55, ST&C @ 425' cmt. w/425 sx. circulated

8-5/8", 32#/ft., K-55, ST&C @ 3805' cmt. w/1500 sx. circulated

Tubing:

None

Cement Plugs:

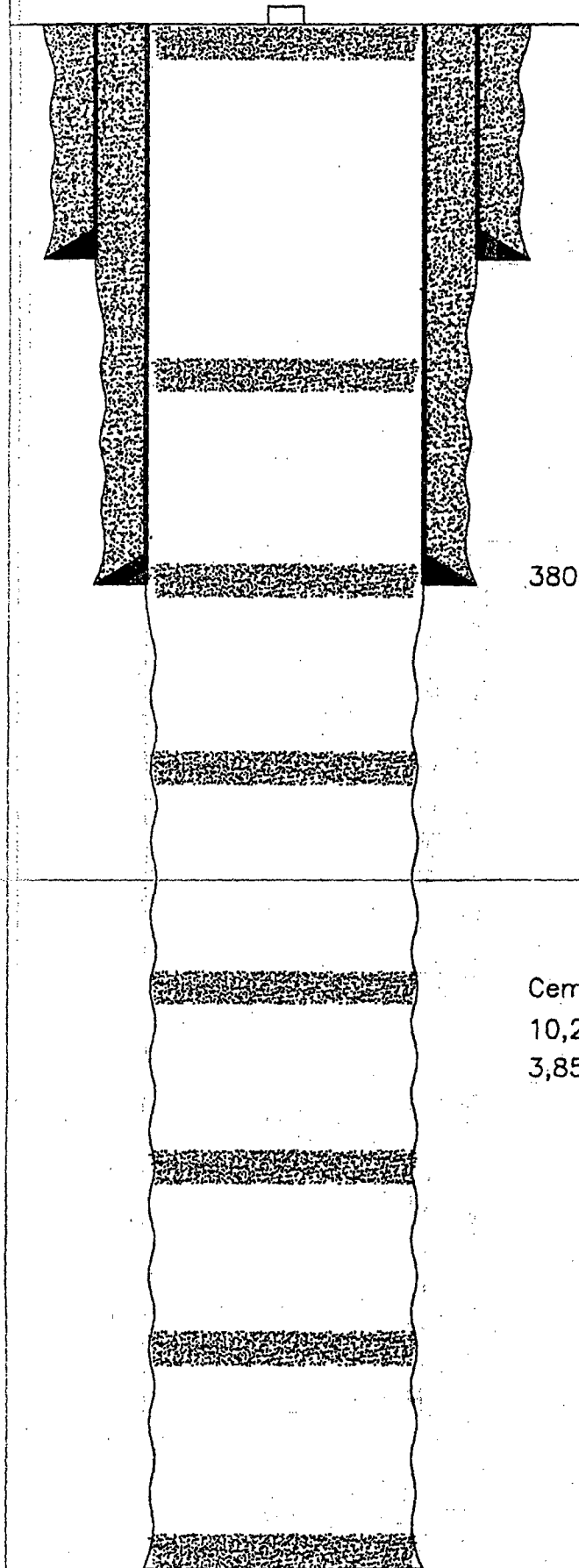
Surface, 2000'-2100', 3750'-3850', 5150'-5250', 6860'-6960', 10100'-10200', 11425'-11525', and 12744'-12844'

Procedure:

1. Clean off location, remove P&A marker, and dig out cellar.
2. Rebuild wellhead to leave a 9" x 5M casing flange looking up.
3. MIRU drilling rig or workover rig. NU double ram 5,000 psi working pressure BOP stack with 3000 psi rated annular preventer.
4. PU 7-7/8" mill tooth bit, DCs, and 3-1/2" drill pipe. Drill out plugs inside casing to 3800'. Test casing to 1500 psig and BOP stack with test plug to 5000 psig.
5. Drill cement plugs circulating and conditioning mud system between plugs. Mud properties to be adjusted to conform to the attached Nova Mud recommendations prior to reaching the Wolfcamp formation.
6. Circulate and condition hole at TD. Short trip to confirm hole condition.
7. POOH laying down drill pipe, DCs, and bit. PU and run 12,875' of 5-1/2", 17#/ft., N-80 casing. Land casing in full tension.
8. Cement w/1000 sx. per attached Baker Hughes procedure.
9. WOC. ND BOP stack. NU wellhead. RDMO drilling equipment.
10. MIRU completion unit. NU hydraulic BOP.
11. PU 4-3/4" bit, 6-3-1/2" DCs and 2-7/8" tubing
12. RU reverse unit. TIH to float collar.
13. Drill out float collar, cement float shoe and open hole to original TD of 13,004'.
14. Circulate hole with clean 2% KCL based packer fluid. POOH laying down workstring, DCs, and bit.
15. PU AS1X-10K nickel plated packer or equivalent with accessories as follows:
 - Profile nipple
 - 6' tailpipe
 - Packer
 - Profile nipple
 - On/Off Tool
 - Plastic coated production tubing.
16. Set packer at +/- 12,800'.
17. ND BOP. NU wellhead.
18. Establish injection rate and acidize if necessary with 5000 gallons 15% HCL-NE-FE acid.
19. RDMO completion equipment and place well on injection

Exhibit 'B'
Existing Plugged & Abandoned Wellbore
04/30/2015

Elevation: 3838'GL KB: +15'



17-1/2" Hole
425' - 13 3/8", J-55, 54.5#, ST&C Casing
Cemented w/425 sxs. Circulated to Surf.

11" Hole
3805' - 8-5/8", J-55, 32#, ST&C Casing.
Cemented w/1500 sxs. Circulated to Surface

7-7/8" Hole

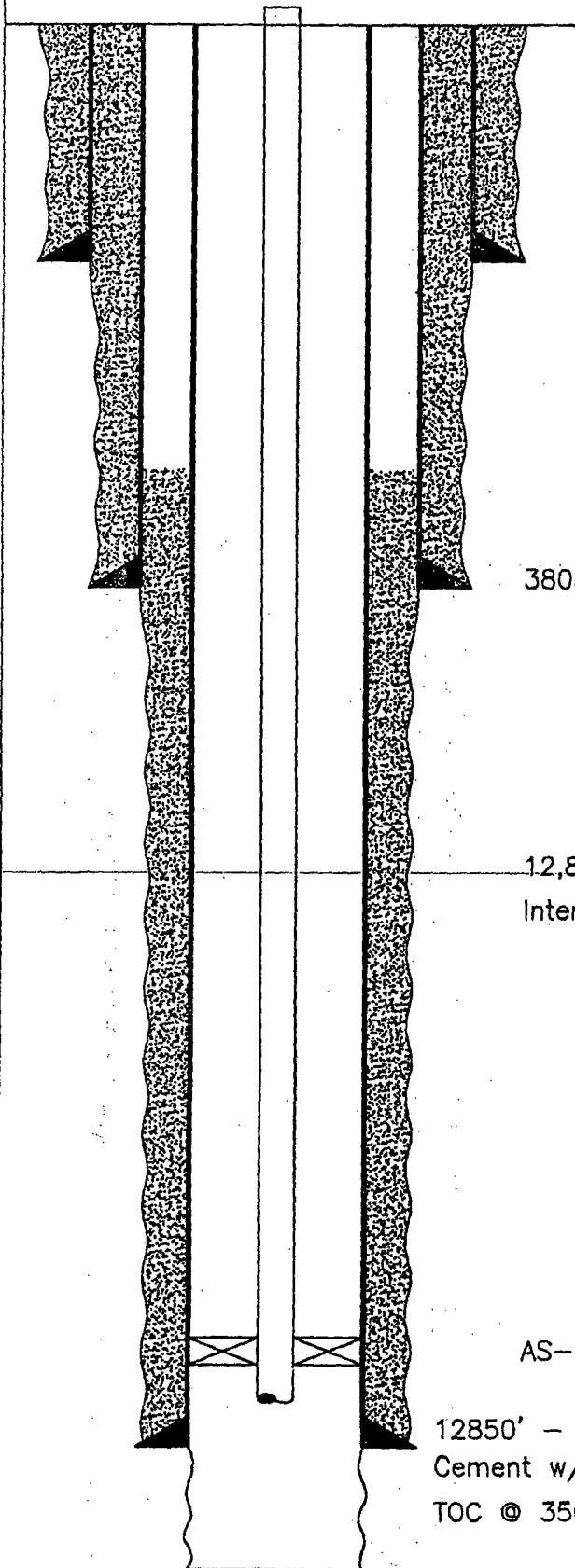
Cement Plugs 12,844'-12,744', 11,525'-11,425',
10,200'-10,100', 6,960'-6,860', 5,250'-5,2150',
3,850'-3,750', 2,100'-2,000', & Surface

T.D. @ 13004'

Lynx Petroleum Cons.
Airpath AEM St. No. 1
660' FSL & 660' FEL
Sec. 8, T-18S, R-36E
Lea County, N.M.

Exhibit 'C'
As Completed Disposal Wellbore
04/30/2015

Elevation: 3738'GL KB: +15'



17-1/2" Hole
425' - 13 3/8", J-55, 54.5#, ST&C Casing
Cemented w/425 sxs. Circulated to Surf.

11" Hole
3805' - 8-5/8", J-55, 32#, ST&C Casing.
Cemented w/1500 sxs. Circulated to Surface

7-7/8" Hole

12,800' 3-1/2", 10.3#, N-80 Hydril CS or equivalent
Internally Plastic Coated

AS-1X Nickel plated packer or equivalent

12850' - 5 1/2", 17#, N-80, LT&C
Cement w/1400 sx. to tie back into 8-5/8" casing
TOC @ 3500'

T.D. @ 13004'

Lynx Petroleum Cons.
Airpath AEM St. No. 1
660' FSL & 660' FEL
Sec. 8, T-18S, R-36E
Lea County, N.M.