

District I
1625 N. French Dr., Hobbs, NM 88240
Phone: (575) 393-6161 Fax: (575) 393-9720
District II
811 S. First St., Artesia, NM 88210
Phone: (575) 748-1283 Fax: (575) 748-9720
District III
1000 Rio Brazos Road, Aztec, NM 87410
Phone: (505) 334-6178 Fax: (505) 334-6170
District IV
1220 S. St. Francis Dr., Santa Fe, NM 87505
Phone: (505) 476-3460 Fax: (505) 476-3462

State of New Mexico
Energy, Minerals & Natural Resources
Department
OIL CONSERVATION DIVISION
1220 South St. Francis Dr.
Santa Fe, NM 87505

FORM C-102

Revised August 1, 2011

Submit one copy to appropriate

District Office

RECEIVED

☐ AMENDED REPORT

WELL LOCATION AND ACREAGE DEDICATION PLAT

¹ API Number 30-025- 42323	² Pool Code 96674	³ Pool Name Triple X; Bone Spring, West
⁴ Property Code 313956	⁵ Property Name NEPTUNE 10 STATE COM	
⁶ Well Number 502H	⁷ Elevation 3610'	
⁸ OGRID No. 7377	⁹ Operator Name EOG RESOURCES, INC.	

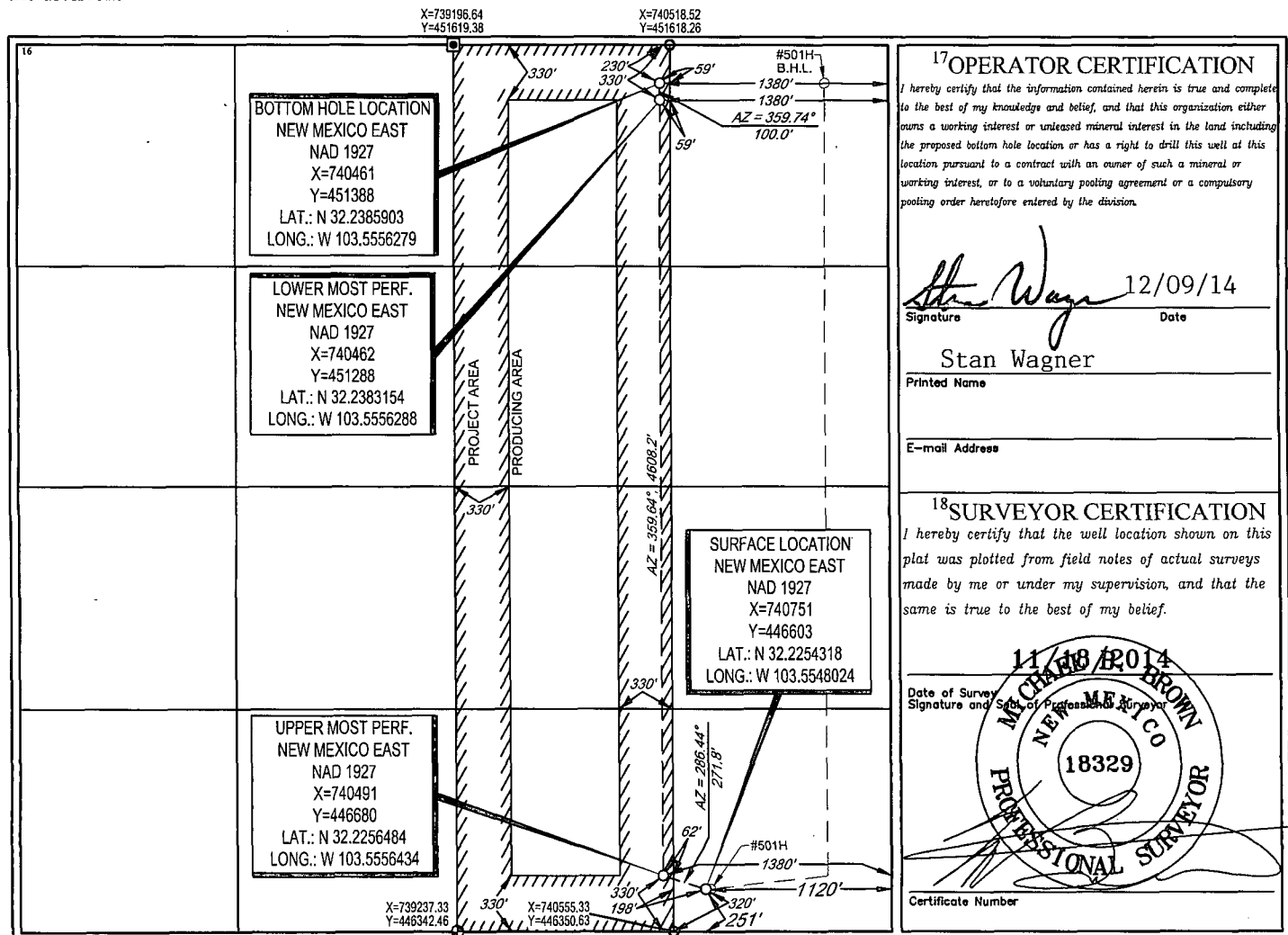
¹⁰Surface Location

UL or lot no.	Section	Township	Range	Lot Idn	Feet from the	North/South line	Feet from the	East/West line	County
P	10	24-S	33-E	-	251'	SOUTH	1120'	EAST	LEA

UL or lot no.	Section	Township	Range	Lot Idn	Feet from the	North/South line	Feet from the	East/West line	County
B	10	24-S	33-E	-	230'	NORTH	1380'	EAST	LEA

¹² Dedicated Acres 160.00	¹³ Joint or Infill	¹⁴ Consolidation Code	¹⁵ Order No.
--	-------------------------------	----------------------------------	-------------------------

No allowable will be assigned to this completion until all interests have been consolidated or a non-standard unit has been approved by the division.

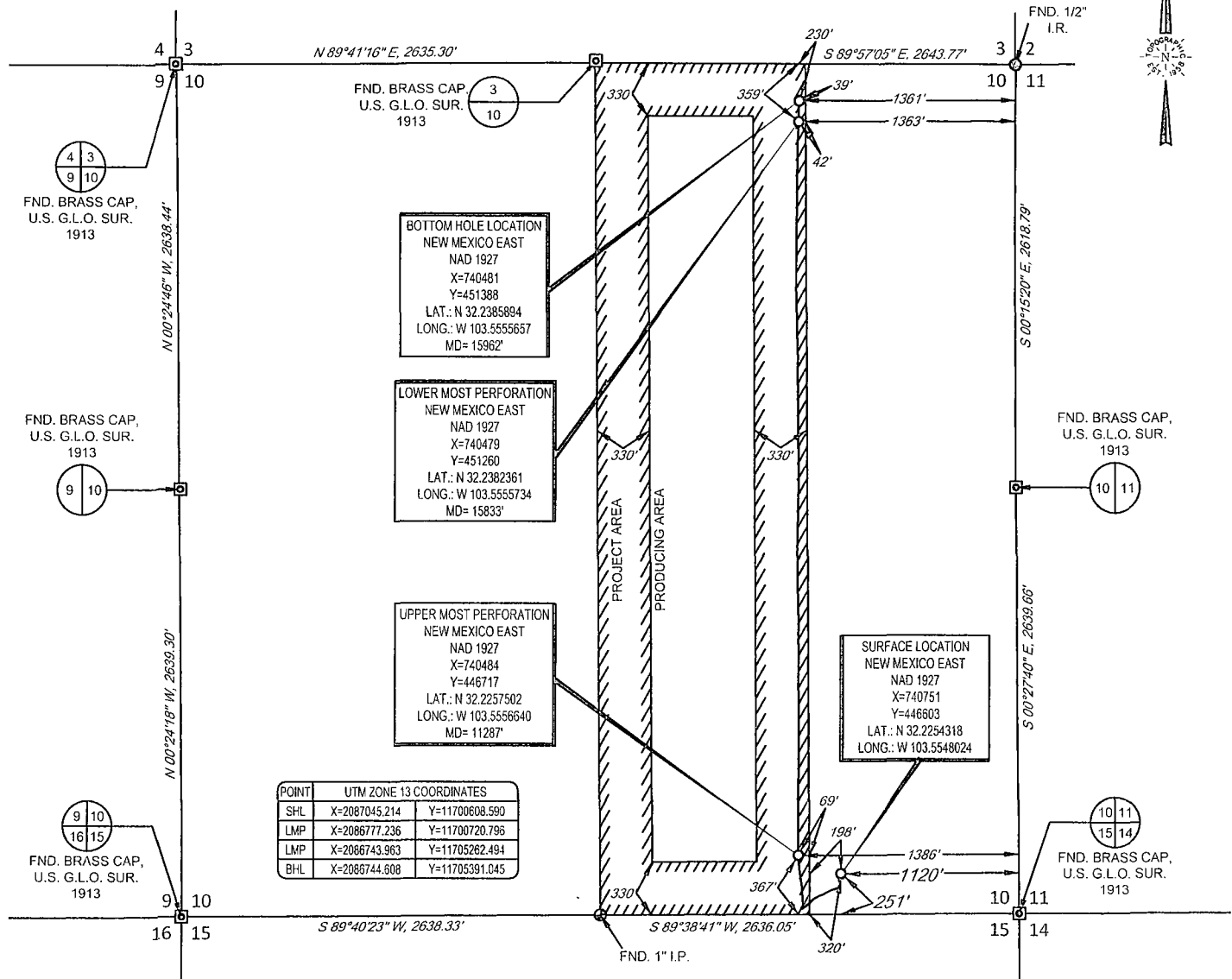


SEP 09 2015

SCALE: 1" = 1000'

0' 500' 1000'

SECTION 10, TOWNSHIP 24-S, RANGE 33-E, N.M.P.M.
LEA COUNTY, NEW MEXICO

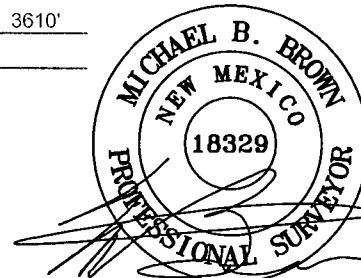


LEASE NAME & WELL NO.: NEPTUNE 10 STATE #502H
SECTION 10 TWP 24-S RGE 33-E SURVEY N.M.P.M.
COUNTY LEA STATE NM ELEVATION 3610'
DESCRIPTION 251' FSL & 1120' FEL



TOPOGRAPHIC
LOYALTY INNOVATION LEGACY

1400 EVERMAN PARKWAY, Ste. 197 • FT. WORTH, TEXAS 76140
TELEPHONE: (817) 744-7512 • FAX (817) 744-7548
2903 NORTH BIG SPRING • MIDLAND, TEXAS 79705
TELEPHONE: (432) 682-1653 OR (800) 767-1653 • FAX (432) 682-1743
WWW.TOPOGRAPHIC.COM



Michael Blake Brown, P.S. No. 18329
JULY 21, 2015

Geog resources, Inc.

NEPTUNE 10 STATE #502H AS-COMPLETED	REVISION:		NOTES:
	INT	DATE	
DATE: 07/21/15			<p>1. ORIGINAL DOCUMENT SIZE: 8.5" X 11"</p> <p>2. ALL BEARINGS, DISTANCES, AND COORDINATE VALUES CONTAINED HEREIN ARE GRID BASED UPON THE NEW MEXICO STATE PLANE COORDINATE SYSTEM, EAST ZONE, U.S. SURVEY FEET, NORTH AMERICAN DATUM 1927.</p> <p>3. CERTIFICATION IS MADE ONLY TO THE LOCATION OF THIS EASEMENT, IN RELATION TO THE EVIDENCE FOUND DURING A FIELD SURVEY. MADE ON THE GROUND, UNDER MY SUPERVISION, AND USING DOCUMENTATION PROVIDED BY EOG RESOURCES, INC. ONLY UTILITIES/EASEMENTS THAT WERE VISIBLE ON THE DATE OF THIS SURVEY, WITHIN/ADJOINING THIS EASEMENT, HAVE BEEN LOCATED AS SHOWN HEREON OF WHICH I HAVE KNOWLEDGE. THIS CERTIFICATION IS LIMITED TO THOSE PERSONS OR ENTITIES SHOWN ON THE FACE OF THIS PLAT AND IS NON-TRANSFERABLE, AND MADE FOR THIS TRANSACTION ONLY.</p>
FILE: AD_NEPTUNE10STATE_502H			
DRAWN BY: S.V.			
SHEET: 1 OF 1			