

District I
1625 N. French Dr., Hobbs, NM 88240
Phone: (575) 393-6161 Fax: (575) 393-0720
District II
811 S. First St., Artesia, NM 88210
Phone: (575) 748-1283 Fax: (575) 748-9720
District III
1000 Rio Brazos Road, Aztec, NM 87410
Phone: (505) 334-6178 Fax: (505) 334-6170
District IV
1220 S. St. Francis Dr., Santa Fe, NM 87505
Phone: (505) 476-3460 Fax: (505) 476-3462

State of New Mexico
Energy, Minerals & Natural Resources Department
OIL CONSERVATION DIVISION
1220 South St. Francis Dr.
Santa Fe, NM 87505

HOBBS OCD

SEP 08 2015

Form C-102
Revised August 1, 2011
Submit one copy to appropriate
District Office

RECEIVED

☐ AMENDED REPORT

WELL LOCATION AND ACREAGE DEDICATION PLAT

¹ API Number 30-025-42756	² Pool Code 44500	³ Pool Name Maljamar, Yeso West
⁴ Property Code 39256	⁵ Property Name PAN HEAD FEE	⁶ Well Number 23H
⁷ GRID NO. 229137	⁸ Operator Name COG OPERATING, LLC	⁹ Elevation 4159'

¹⁰ Surface Location

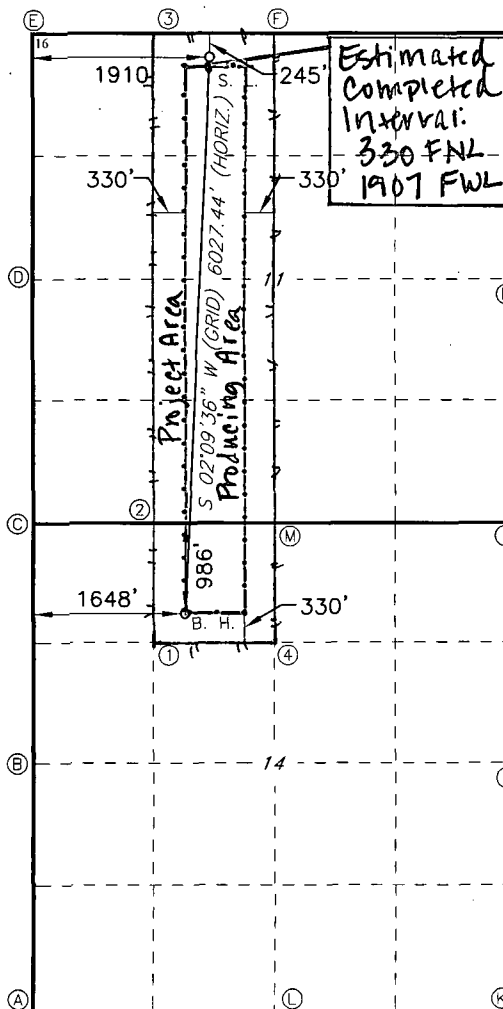
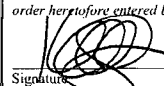
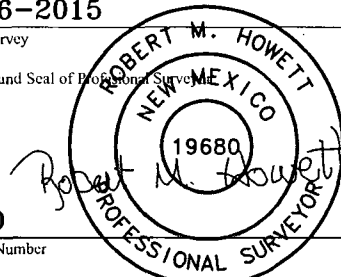
UL or lot no.	Section	Township	Range	Lot Idn	Feet from the	North/South line	Feet From the	East/West line	County
C	11	17S	32E		245	NORTH	1910	WEST	LEA

¹¹ Bottom Hole Location If Different From Surface

UL or lot no.	Section	Township	Range	Lot Idn	Feet from the	North/South line	Feet from the	East/West line	County
C	14	17S	32E		986	NORTH	1648	WEST	LEA

¹² Dedicated Acres 200	¹³ Joint or Infill	¹⁴ Consolidation Code	¹⁵ Order No.
---	-------------------------------	----------------------------------	-------------------------

No allowable will be assigned to this completion until all interest have been consolidated or a non-standard unit has been approved by the division.

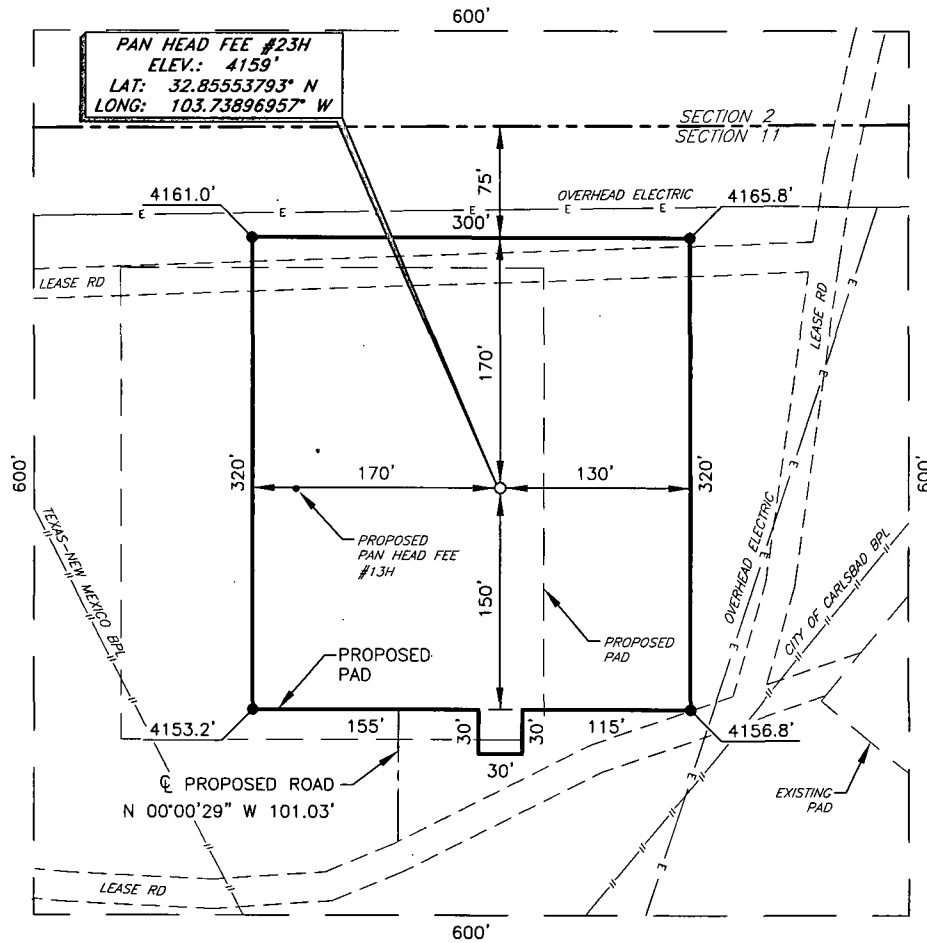
	<p>GEODETIC DATA NAD 27 GRID - NM EAST 1: CALCULATED POINT N 669116.0 - E 681964.8 SURFACE LOCATION N 675469.6 - E 682519.7 2: CALCULATED POINT N 670432.5 - E 681955.9 LAT: 32.85553793° N LONG: 103.73896957° W 3: CALCULATED POINT N 675712.0 - E 681927.0 BOTTOM HOLE N 669446.4 - E 682292.5 4: CALCULATED POINT N 669118.0 - E 683282.8 CORNER DATA NAD 27 GRID - NM EAST A: FOUND BRASS CAP "1913" N 665155.6 - E 680671.4 B: FOUND BRASS CAP "1913" N 667794.8 - E 680655.1 C: FOUND BRASS CAP "1913" N 670433.3 - E 680638.7 D: FOUND BRASS CAP "1913" N 673071.1 - E 680625.4 E: FOUND BRASS CAP "1913" N 675706.5 - E 680608.1 F: FOUND BRASS CAP "1913" N 675717.6 - E 683245.8 G: FOUND BRASS CAP "1913" N 675728.9 - E 685884.7 H: FOUND BRASS CAP "1913" N 673091.0 - E 685901.5 I: FOUND BRASS CAP "1913" N 670452.7 - E 685918.1 J: FOUND BRASS CAP "1913" N 667813.8 - E 685935.1 K: FOUND BRASS CAP "1913" N 665174.0 - E 685951.4 L: FOUND BRASS CAP "1913" N 665164.7 - E 683311.6 M: FOUND BRASS CAP "1913" N 670431.7 - E 683273.2</p>	<p>¹⁷ OPERATOR CERTIFICATION I hereby certify that the information contained herein is true and complete to the best of my knowledge and belief, and that this organization either owns a working interest or unleased mineral interest in the land including the proposed bottom hole location or has a right to drill this well at this location pursuant to a contract with an owner of such a mineral or working interest, or to a voluntary pooling agreement or a compulsory pooling order heretofore entered by the division.  Signature 7-23-15 Date Kelly J. Holly Printed Name kholly@concho.com E-mail Address</p>
		<p>¹⁸ SURVEYOR CERTIFICATION I hereby certify that the well location shown on this plat was plotted from field notes of actual surveys made by me or under my supervision, and that the same is true and correct to the best of my belief. 6-16-2015 Date of Survey Signature and Seal of Professional Surveyor  19680 Certificate Number</p>

RRC - Firm No.: TX 10193838 NM 4655451 - Job No.: LS1505219

SEP 14 2015

COG OPERATING, LLC.

PAN HEAD FEE #23H
(245' FNL & 1910' FWL)
SECTION 11, T17S, R32E
N. M. P. M., LEA COUNTY, NEW MEXICO



DIRECTIONS TO LOCATION

From the intersection of US Hwy. 82 and CR-249 (Tower Rd.)
Go Northeast on US Hwy. 82 approx. 170 feet to a lease road on the right;
Turn right and go Southeast approx. 0.9 miles to a lease road on the right;
Turn right and go Southwest approx. 0.3 miles to a lease road on the right;
Turn right and go Southwest approx. 264 feet to a proposed road on the right;
Turn right and go North approx. 251 feet.
Location is on the right.

SCALE: 1" = 100'
0 50 100
BEARINGS ARE
NAD 27 GRID - NM EAST
DISTANCES ARE GROUND

Firm No.: TX 10193838 NM 4655451

Copyright 2014 - All Rights Reserved

NO.	REVISION	DATE
JOB NO.:	LS1505219	
DWG. NO.:	1505219PAD	

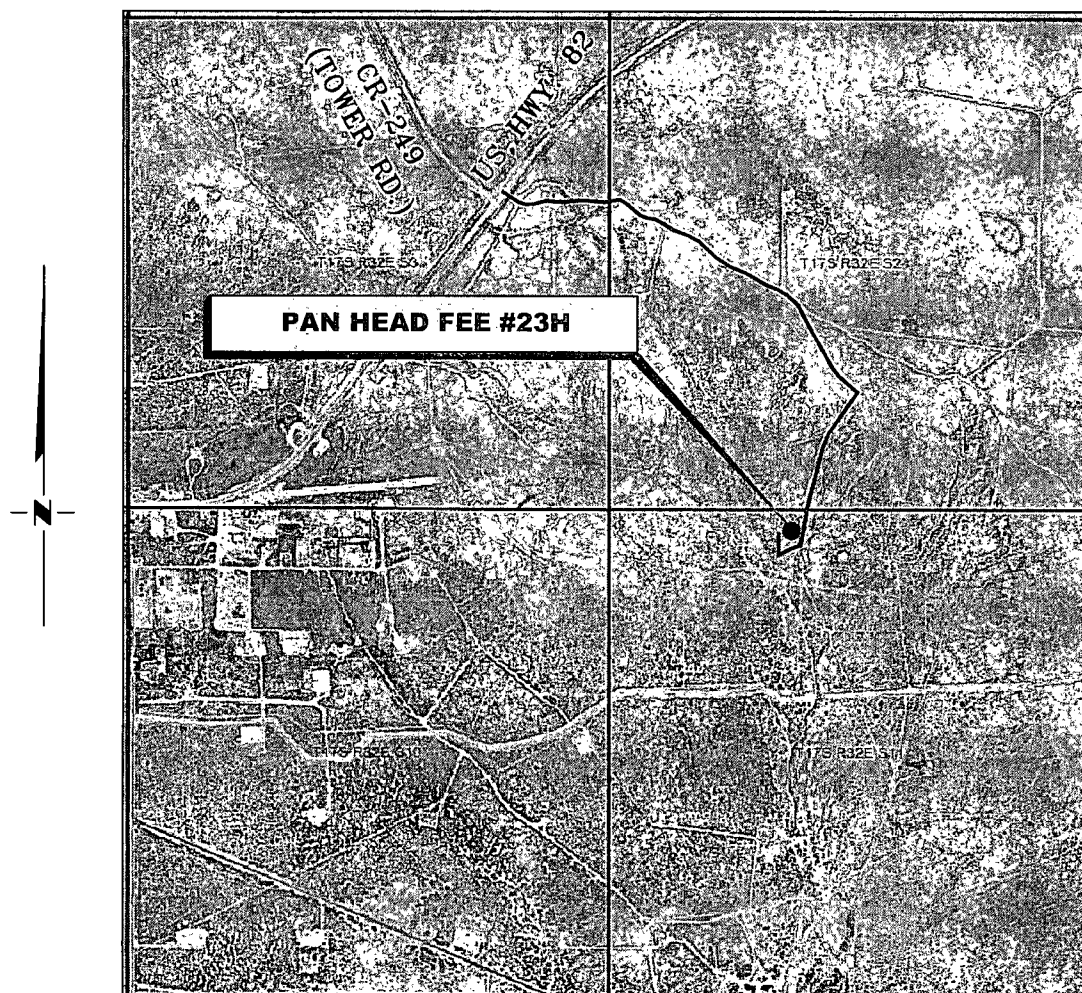
RRC

308 W. BROADWAY ST., HOBBS, NM 88240 (575) 964-8200

SCALE: 1" = 100'
DATE: 6-16-2015
SURVEYED BY: BC/CG
DRAWN BY: CMJ
APPROVED BY: RMH
SHEET : 1 OF 1

VICINITY MAP

NOT TO SCALE



*SECTION 11, TWP. 17 SOUTH, RGE. 32 EAST,
N. M. P. M., LEA CO., NEW MEXICO*

OPERATOR: COG Operating, LLC
LEASE: Pan Head Fee
WELL NO.: 23H

LOCATION: 245' FNL & 1910' FWL
ELEVATION: 4159'

Firm No.: TX 10193838 NM 4655451

Copyright 2014 - All Rights Reserved

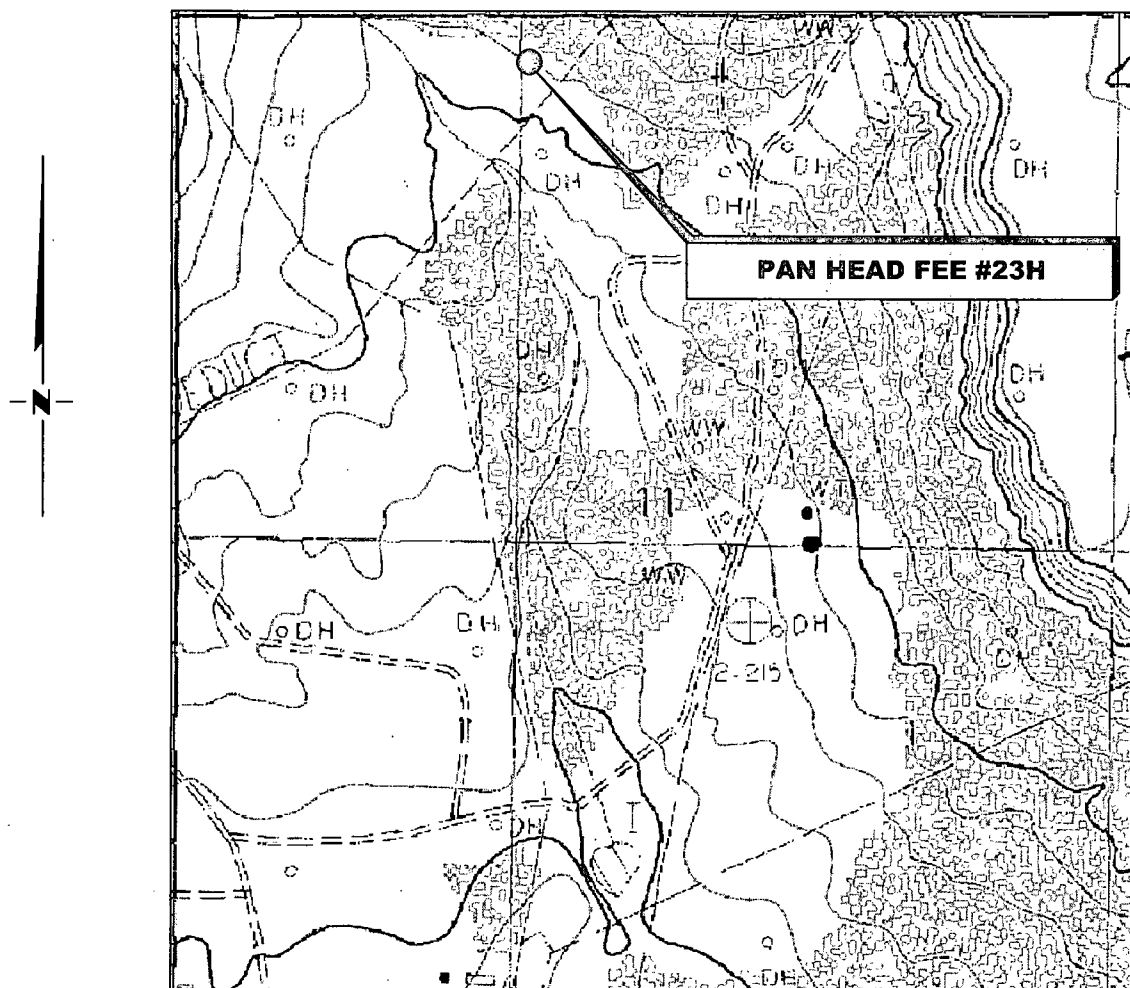
NO.	REVISION	DATE
JOB NO.: LS1505219		
DWG. NO.: 1505219VM		

RRC

308 W. BROADWAY ST., HOBBS, NM 88240 (575) 964-8200

SCALE: NTS
DATE: 6-16-2015
SURVEYED BY: BC/ER
DRAWN BY: CMJ
APPROVED BY: RMH
SHEET : 1 OF 1

LOCATION VERIFICATION MAP



*SECTION 11, TWP. 17 SOUTH, RGE. 32 EAST,
N. M. P. M., LEA CO., NEW MEXICO*

OPERATOR: COG Operating, LLC
LEASE: Pan Head Fee
WELL NO.: 23H
ELEVATION: 4159'

LOCATION: 245' FNL & 1910' FWL
CONTOUR INTERVAL: 10'
USGS TOPO. SOURCE MAP:
Dog Lake, NM (P. E. 1985)

Firm No.: TX 10193838 NM 4655451

Copyright 2015 - All Rights Reserved

NO.	REVISION	DATE
JOB NO.:	LS1505219	
DWG. NO.:	1505219LVM	

RRC

308 W. BROADWAY ST., HOBBS, NM 88240 (575) 964-8200

SCALE: 1000'
DATE: 6-16-2015
SURVEYED BY: BC/ER
DRAWN BY: CMJ
APPROVED BY: RMH
SHEET : 1 OF 1