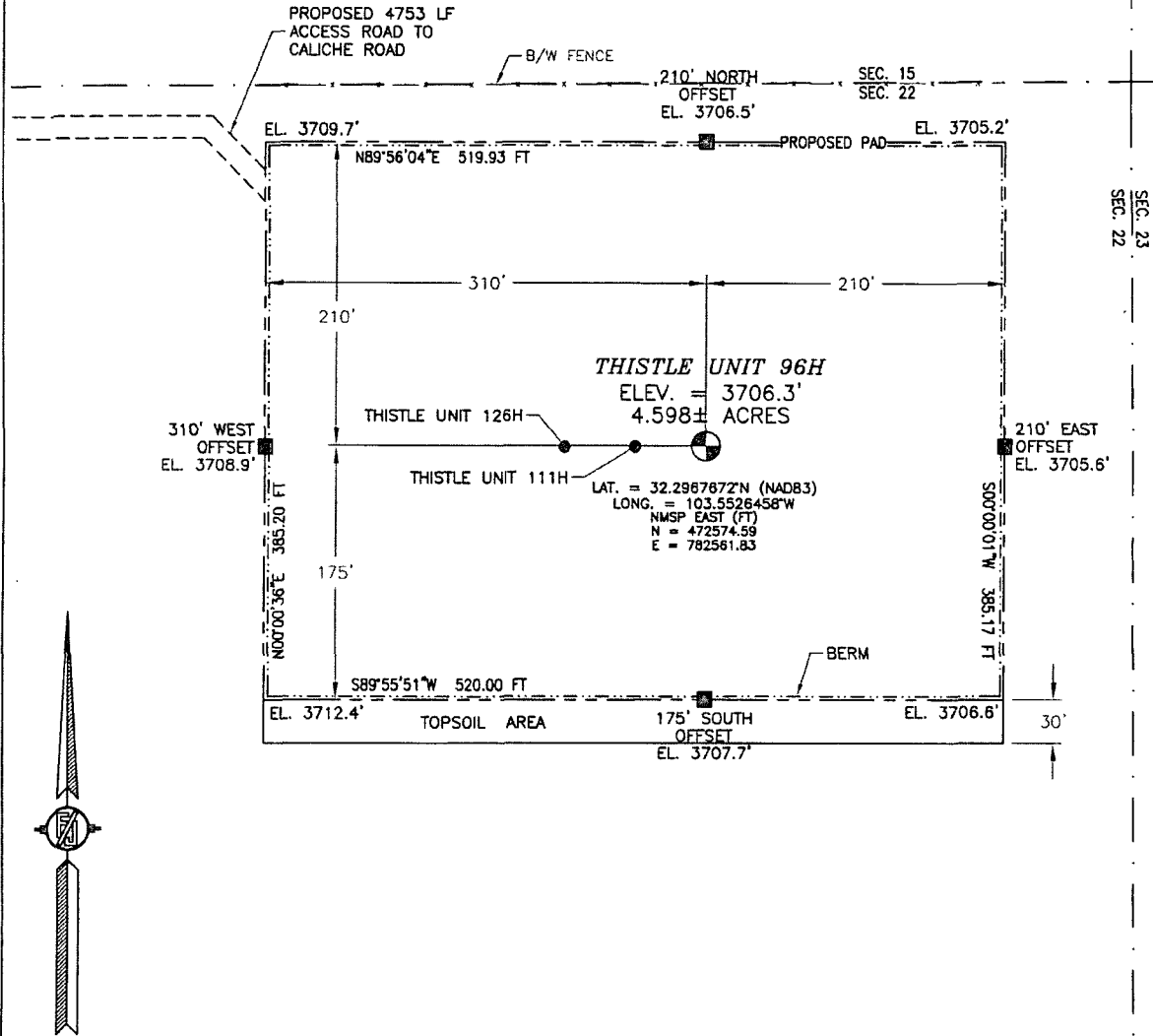


SEP 21 18 2015

SECTION 22, TOWNSHIP 23 SOUTH, RANGE 33 EAST, N.M.P.M.
LEA COUNTY, STATE OF NEW MEXICO
SITE MAP

NOTE: LATITUDE AND LONGITUDE COORDINATES ARE SHOWN USING THE NORTH AMERICAN DATUM OF 1983 (NAD83). LISTED NEW MEXICO STATE PLANE EAST COORDINATES ARE GRID (NAD83). BASIS OF BEARING AND DISTANCES USED ARE NEW MEXICO STATE PLANE EAST COORDINATES MODIFIED TO THE SURFACE



0 12 60 120 240
SCALE 1" = 120'

DIRECTIONS TO LOCATION

FROM STATE HIGHWAY 128 AND CR 21 (DELAWARE BASIN) GO NORTH ON CR 21 3.95 MILES, TURN LEFT ON PAVED ROAD (XL ROAD) AND GO WEST 3.4 MILES, TURN RIGHT ON CALICHE ROAD AND GO NORTH 0.9 MILE, BEND LEFT AND NORTHWEST 0.15 MILE, BEND RIGHT AND GO NORTHEAST 0.1 MILE, BEND LEFT GO NORTH 0.95 MILE ON RIGHT SIDE BEGIN PROPOSED ROAD, FOLLOW EAST 4753' TO NORTHWEST PAD CORNER.

DEVON ENERGY PRODUCTION COMPANY, L.P.

THISTLE UNIT 96H

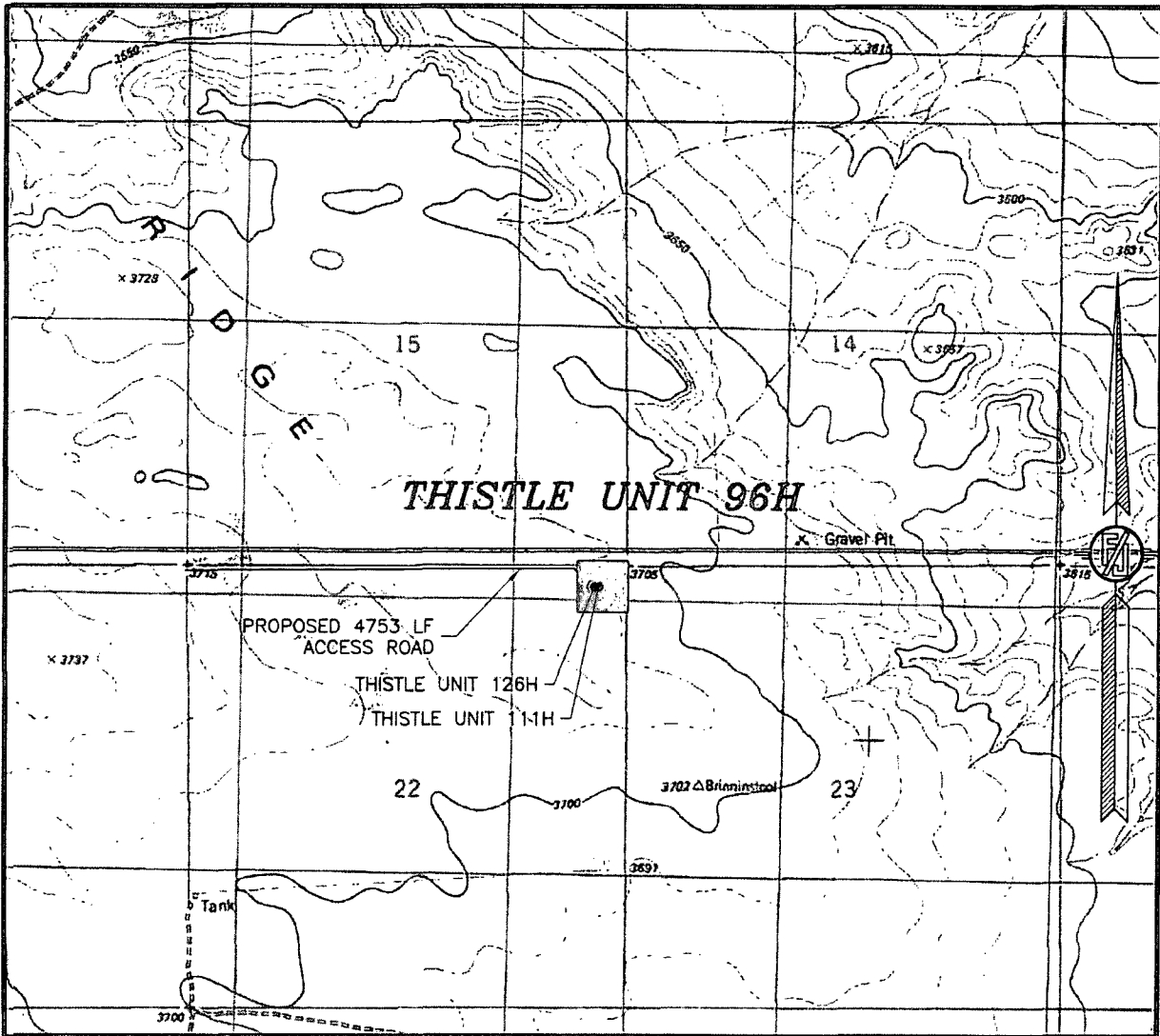
LOCATED 250 FT. FROM THE NORTH LINE
AND 300 FT. FROM THE EAST LINE OF
SECTION 22, TOWNSHIP 23 SOUTH,
RANGE 33 EAST, N.M.P.M.
LEA COUNTY, STATE OF NEW MEXICO

MAY 27, 2015

SURVEY NO. 3808C

MADRON SURVEYING, INC. 301 SOUTH CANAL (575) 234-3341 CARLSBAD, NEW MEXICO

SECTION 22, TOWNSHIP 23 SOUTH, RANGE 33 EAST, N.M.P.M.
LEA COUNTY, STATE OF NEW MEXICO
LOCATION VERIFICATION MAP



USGS QUAD MAP:
TIP TOP WELLS

NOT TO SCALE

DEVON ENERGY PRODUCTION COMPANY, L.P.
THISTLE UNIT 96H

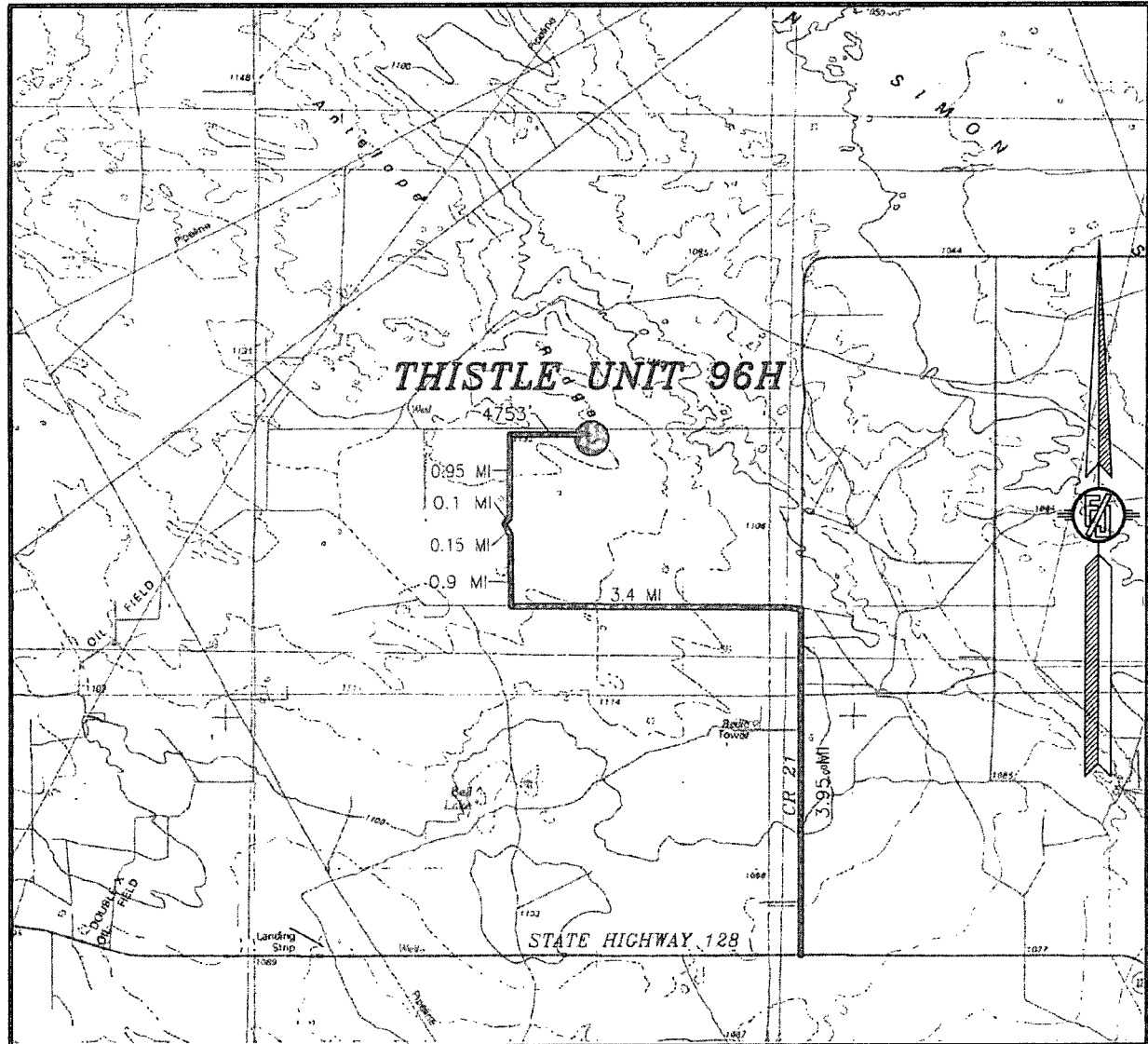
LOCATED 250 FT. FROM THE NORTH LINE
AND 300 FT. FROM THE EAST LINE OF
SECTION 22, TOWNSHIP 23 SOUTH,
RANGE 33 EAST, N.M.P.M.
LEA COUNTY, STATE OF NEW MEXICO

MAY 27, 2015

SURVEY NO. 3808C

MADRON SURVEYING, INC. 301 SOUTH CANAL (575) 234-3341 CARLSBAD, NEW MEXICO

SECTION 22, TOWNSHIP 23 SOUTH, RANGE 33 EAST, N.M.P.M.
LEA COUNTY, STATE OF NEW MEXICO
VICINITY MAP



DISTANCES IN MILES

NOT TO SCALE

DEVON ENERGY PRODUCTION COMPANY, L.P.
THISTLE UNIT 96H

LOCATED 250 FT. FROM THE NORTH LINE
AND 300 FT. FROM THE EAST LINE OF
SECTION 22, TOWNSHIP 23 SOUTH,
RANGE 33 EAST, N.M.P.M.
LEA COUNTY, STATE OF NEW MEXICO

DIRECTIONS TO LOCATION

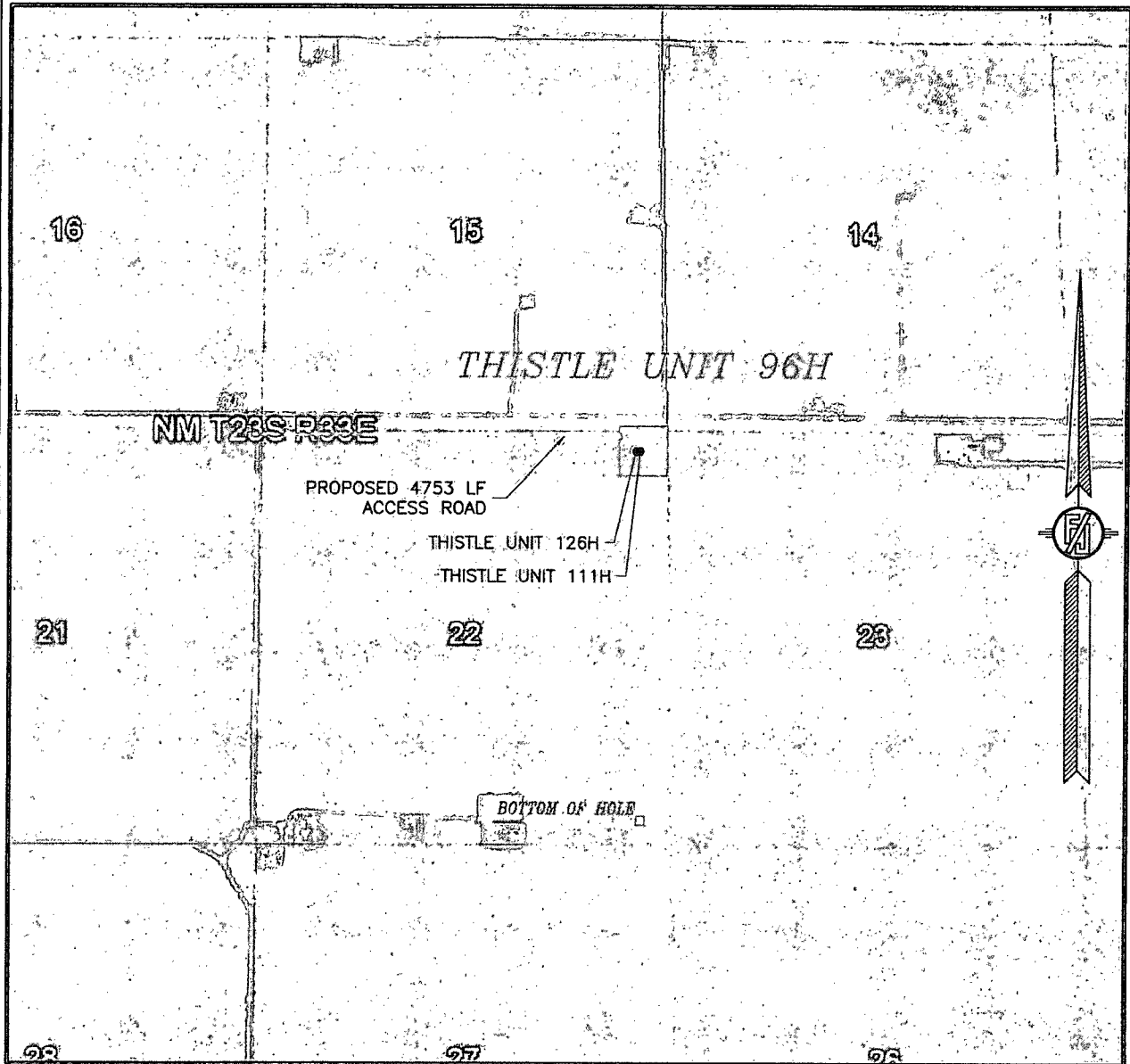
FROM STATE HIGHWAY 128 AND CR 21 (DELAWARE BASIN) GO NORTH ON CR 21 3.95 MILES, TURN LEFT ON PAVED ROAD (XL ROAD) AND GO WEST 3.4 MILES, TURN RIGHT ON CALICHE ROAD AND GO NORTH 0.9 MILE, BEND LEFT AND NORTHWEST 0.15 MILE, BEND RIGHT AND GO NORTHEAST 0.1 MILE, BEND LEFT GO NORTH 0.95 MILE ON RIGHT SIDE BEGIN PROPOSED ROAD, FOLLOW EAST 4753' TO NORTHWEST PAD CORNER.

MAY 27, 2015

SURVEY NO. 3808C

MADRON SURVEYING, INC. 301 SOUTH CANAL (575) 234-3341 CARLSBAD, NEW MEXICO

SECTION 22, TOWNSHIP 23 SOUTH, RANGE 33 EAST, N.M.P.M.
LEA COUNTY, STATE OF NEW MEXICO
AERIAL PHOTO



NOT TO SCALE
AERIAL PHOTO:
GOOGLE EARTH
FEBRUARY 2014

DEVON ENERGY PRODUCTION COMPANY, L.P.

THISTLE UNIT 96H

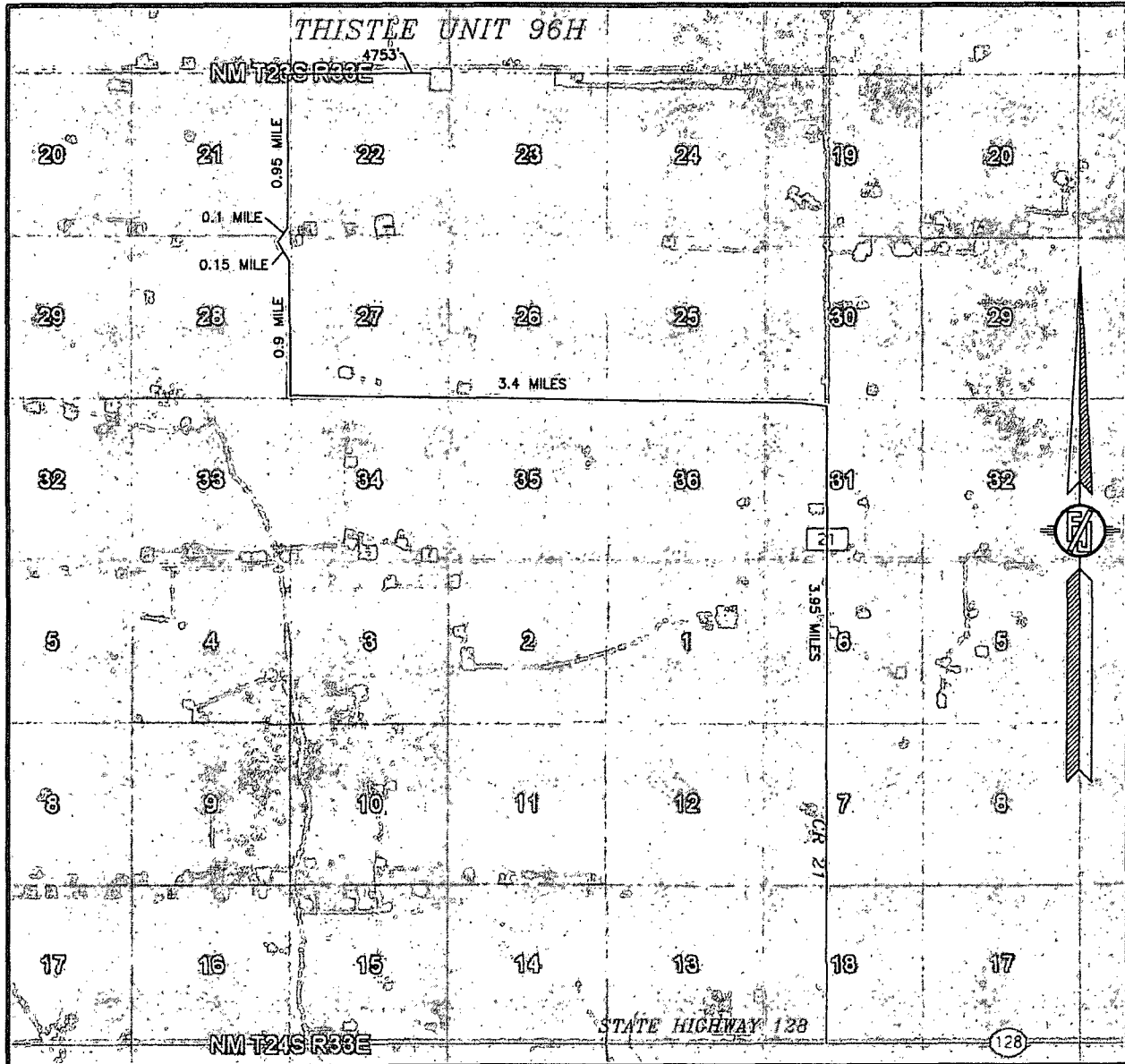
LOCATED 250 FT. FROM THE NORTH LINE
AND 300 FT. FROM THE EAST LINE OF
SECTION 22, TOWNSHIP 23 SOUTH,
RANGE 33 EAST, N.M.P.M.
LEA COUNTY, STATE OF NEW MEXICO

MAY 27, 2015

SURVEY NO. 3808C

MADRON SURVEYING, INC. 301 SOUTH CANAL (575) 234-3341 CARLSBAD, NEW MEXICO

SECTION 22, TOWNSHIP 23 SOUTH, RANGE 33 EAST, N.M.P.M.
LEA COUNTY, STATE OF NEW MEXICO
ACCESS AERIAL ROUTE MAP



NOT TO SCALE
AERIAL PHOTO:
GOOGLE EARTH
FEBRUARY 2014

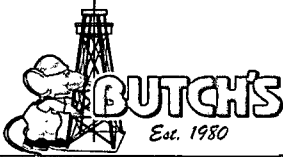
DEVON ENERGY PRODUCTION COMPANY, L.P.
THISTLE UNIT 96H

LOCATED 250 FT. FROM THE NORTH LINE
AND 300 FT. FROM THE EAST LINE OF
SECTION 22, TOWNSHIP 23 SOUTH,
RANGE 33 EAST, N.M.P.M.
LEA COUNTY, STATE OF NEW MEXICO

MAY 27, 2015

SURVEY NO. 3808C

MADRON SURVEYING, INC. 301 SOUTH CANAL (575) 234-3341 CARLSBAD, NEW MEXICO



BRHAS.com
1(888) 400-6294



MARCH 13, 2015

DEVON

AMANDA GREENWOOD
Amanda.Greenwood@dvn.com

ON MARCH 13, 2015, WE SET 10' X 30" PIPE WITH A LID ON THE BOSS HOGG 15 STATE COM 1H. WE CEMENTED THE 30" CASING 3' FROM THE TOP AND BACK FILLED IT WITH DIRT TO THE TOP. DRILL TIME WAS 1 HOUR.

ON APRIL 1, 2015, WE DRILLED AN ADDITIONAL 2' ON THE ABOVE WELL FOR A TOTAL OF 12' DRILLED SO FAR. DRILL TIME WAS 1 HOUR.

ON APRIL 20, 2015, WE DRILLED AN ADDITIONAL 2' ON THE ABOVE WELL FOR A TOTAL OF 14' DRILLED SO FAR. DRILL TIME WAS 1 HOUR.

ON MAY 7, 2015, WE DRILLED AN ADDITIONAL 2' ON THE ABOVE WELL FOR A TOTAL OF 16' DRILLED SO FAR. DRILL TIME WAS 1 HOUR.

ON MAY 22, 2015, WE DRILLED AN ADDITIONAL 2' ON THE ABOVE WELL FOR A TOTAL OF 18' DRILLED SO FAR. DRILL TIME WAS 1 HOUR.

ON JUNE 10, 2015, WE DRILLED AN ADDITIONAL 2' ON THE ABOVE WELL FOR A TOTAL OF 20' DRILLED SO FAR. DRILL TIME WAS 1 HOUR.

PLEASE LET ME KNOW IF YOU HAVE ANY QUESTIONS.

REGARDS,

LEE SELLERS
DRILLING SERVICES COORDINATOR

BRHAS.com

Kansas • New Mexico • North Dakota
Oklahoma • Pennsylvania • Texas

1 (888) 400-6294