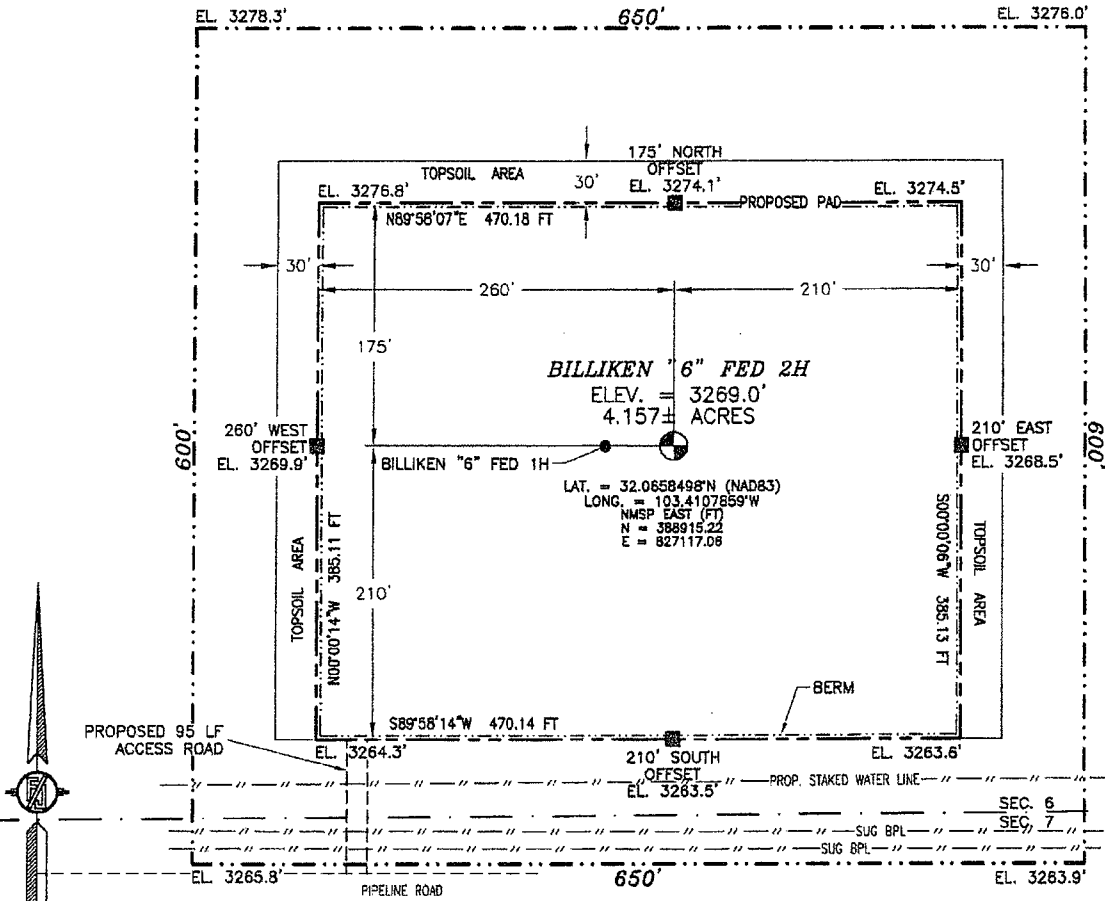


SECTION 6, TOWNSHIP 26 SOUTH, RANGE 35 EAST, N.M.P.M.  
LEA COUNTY, STATE OF NEW MEXICO

SITE MAP

NOTE: LATITUDE AND LONGITUDE COORDINATES ARE SHOWN USING THE NORTH AMERICAN DATUM OF 1983 (NAD83). LISTED NEW MEXICO STATE PLANE EAST COORDINATES ARE GRID (NAD83). BASIS OF BEARING AND DISTANCES USED ARE NEW MEXICO STATE PLANE EAST COORDINATES MODIFIED TO THE SURFACE



0 12 60 120 240  
SCALE 1" = 120'

DIRECTIONS TO LOCATION

FROM THE INTERSECTION OF STATE HIGHWAY 128 AND CR 2 (BATTLE AXE ROAD) GO SOUTH & WEST ON CR 2 APPROX. 12.2 MILES TO A LEASE ROAD ON LEFT (SOUTH) TURN SOUTH ON LEASE ROAD GO APPROX. 0.8 OF A MILE, ROAD TURNS LEFT (EAST) ON PIPELINE ROAD. GO EAST ON PIPELINE ROAD APPROX. 7.25 MILES TO A ROAD LATH WITH RED & WHITE PAINT ON LEFT (NORTH) OF PIPELINE ROAD. GO NORTH APPROX. 95' TO THE SOUTHWEST CORNER FOR THIS LOCATION.

DEVON ENERGY PRODUCTION COMPANY, L.P.  
**BILLIKEN "6" FED 2H**  
LOCATED 265 FT. FROM THE SOUTH LINE  
AND 1345 FT. FROM THE WEST LINE OF  
SECTION 6, TOWNSHIP 26 SOUTH,  
RANGE 35 EAST, N.M.P.M.  
LEA COUNTY, STATE OF NEW MEXICO

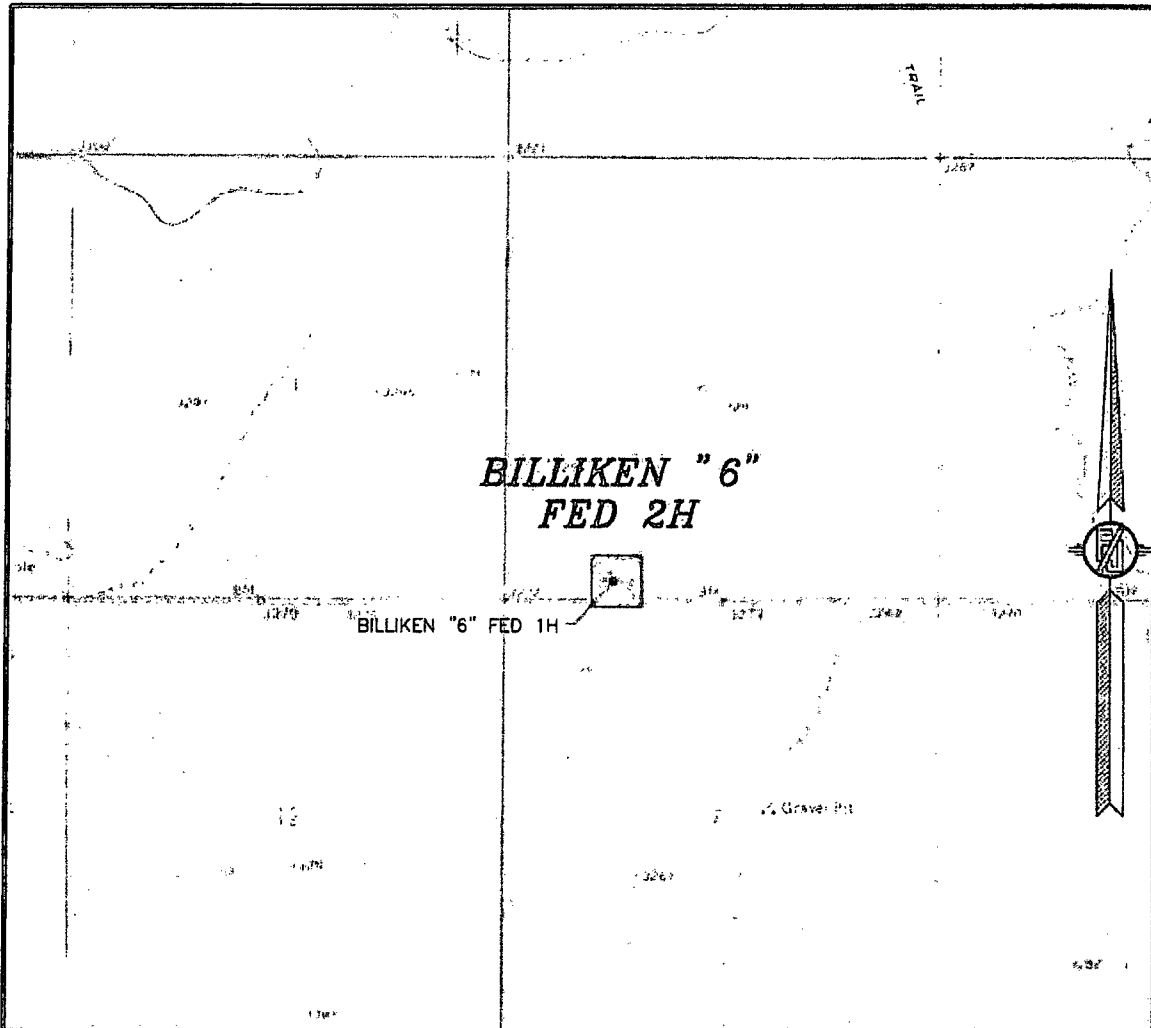
JUNE 9, 2015

SURVEY NO. 4023

MADRON SURVEYING, INC. 301 SOUTH CANAL (575) 234-3341 CARLSBAD, NEW MEXICO

SEP 23 2015

SECTION 6, TOWNSHIP 26 SOUTH, RANGE 35 EAST, N.M.P.M.  
LEA COUNTY, STATE OF NEW MEXICO  
LOCATION VERIFICATION MAP



USGS QUAD MAP:  
ANDREWS PLACE

NOT TO SCALE

DEVON ENERGY PRODUCTION COMPANY, L.P.

**BILLIKEN "6" FED 2H**

LOCATED 265 FT. FROM THE SOUTH LINE  
AND 1345 FT. FROM THE WEST LINE OF

SECTION 6, TOWNSHIP 26 SOUTH,

RANGE 35 EAST, N.M.P.M.

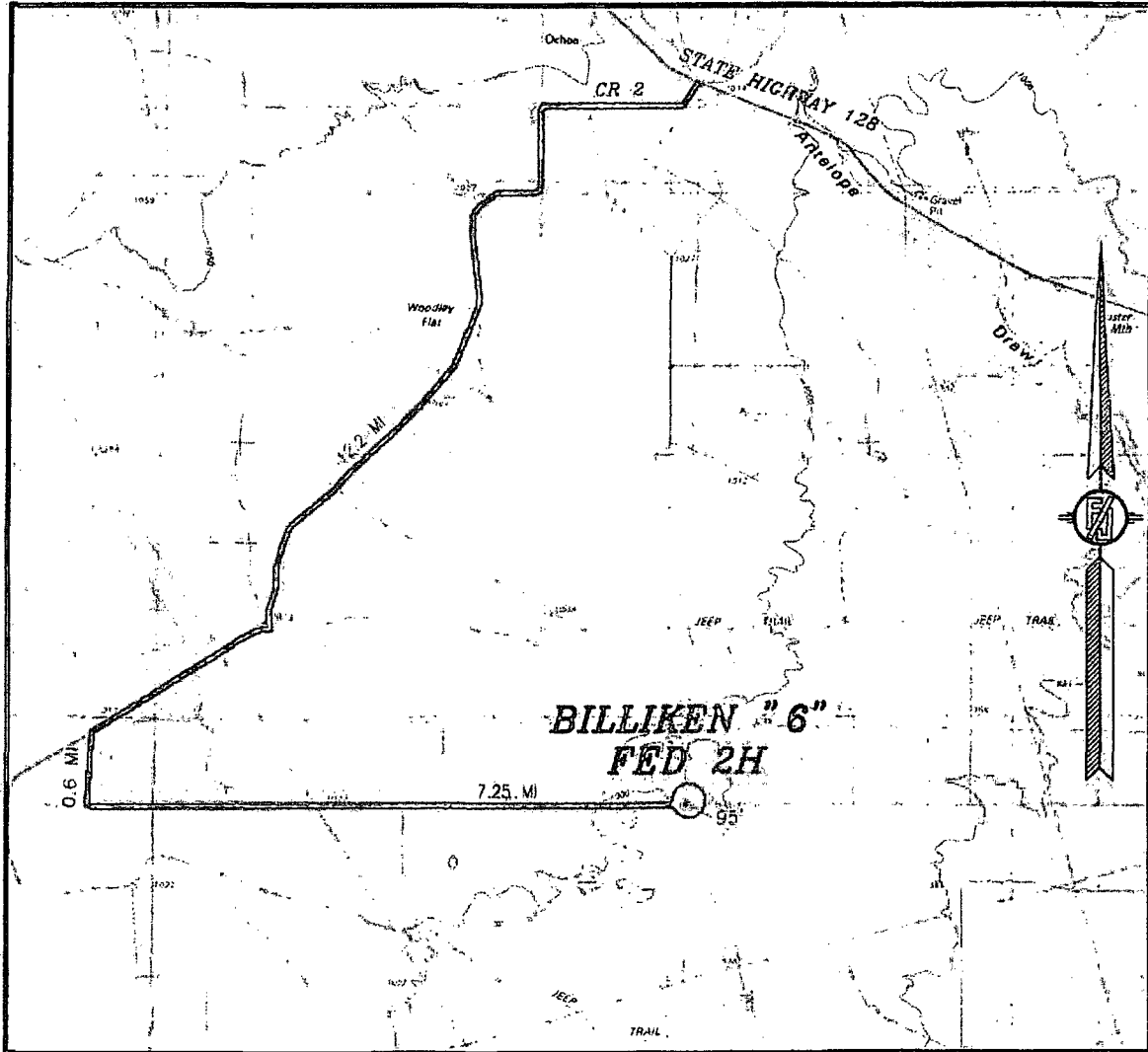
LEA COUNTY, STATE OF NEW MEXICO

JUNE 9, 2015

SURVEY NO. 4023

MADRON SURVEYING, INC. 301 SOUTH CANAL (575) 234-3341 CARLSBAD, NEW MEXICO

SECTION 6, TOWNSHIP 26 SOUTH, RANGE 35 EAST, N.M.P.M.  
LEA COUNTY, STATE OF NEW MEXICO  
VICINITY MAP



DISTANCES IN MILES

NOT TO SCALE

DEVON ENERGY PRODUCTION COMPANY, L.P.

**BILLIKEN "6" FED 2H**

LOCATED 265 FT. FROM THE SOUTH LINE  
AND 1345 FT. FROM THE WEST LINE OF  
SECTION 6, TOWNSHIP 26 SOUTH,  
RANGE 35 EAST, N.M.P.M.  
LEA COUNTY, STATE OF NEW MEXICO

**DIRECTIONS TO LOCATION**

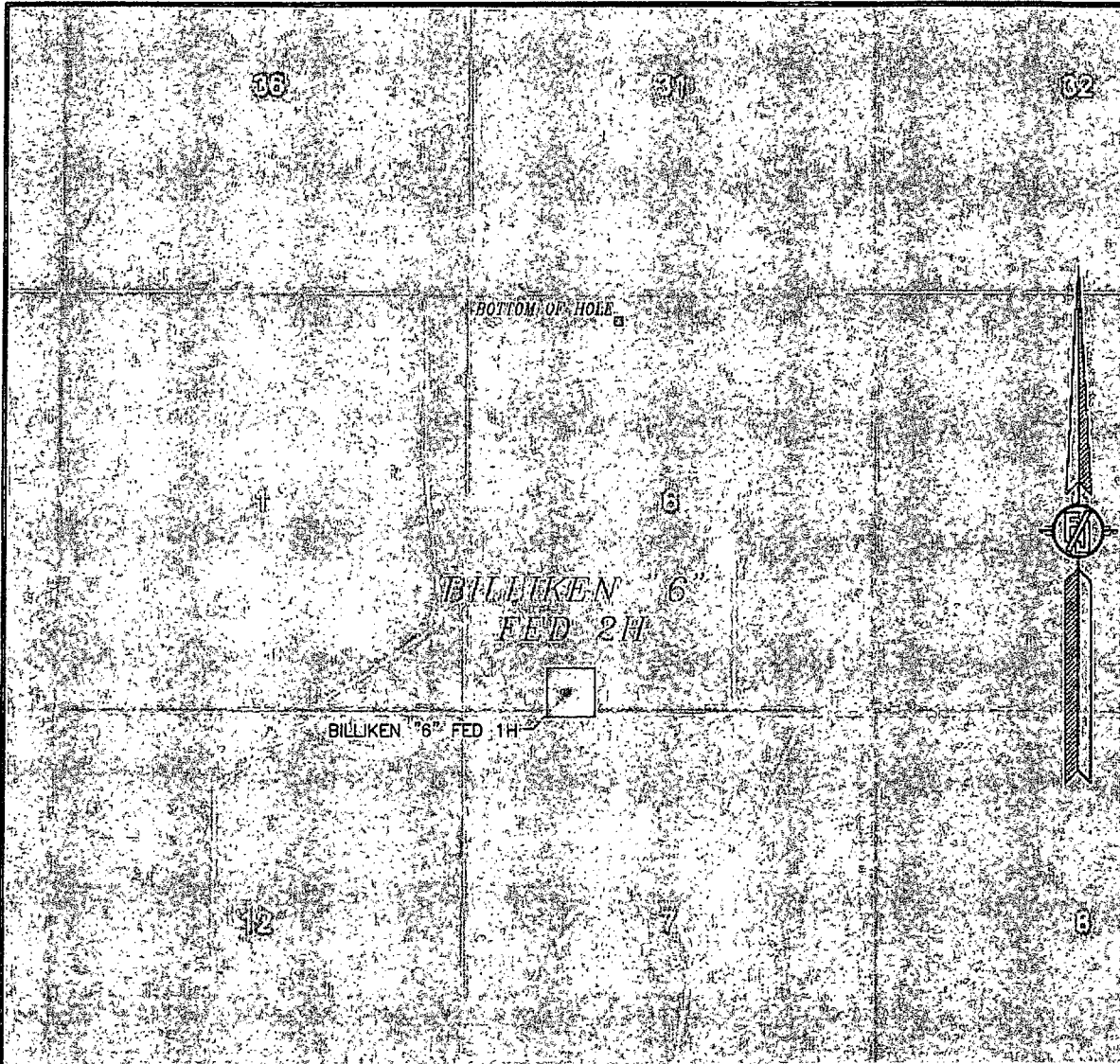
FROM THE INTERSECTION OF STATE HIGHWAY 128 AND CR 2 (BATTLE  
AXE ROAD) GO SOUTH & WEST ON CR 2 APPROX. 12.2 MILES TO A  
LEASE ROAD ON LEFT (SOUTH) TURN SOUTH ON LEASE ROAD GO  
APPROX. 0.6 OF A MILE, ROAD TURNS LEFT (EAST) ON PIPELINE  
ROAD, GO EAST ON PIPELINE ROAD APPROX. 7.25 MILES TO A ROAD  
LATH WITH RED & WHITE PAINT ON LEFT (NORTH) OF PIPELINE ROAD.  
GO NORTH APPROX. 95' TO THE SOUTHWEST CORNER FOR THIS  
LOCATION.

JUNE 9, 2015

SURVEY NO. 4023

MADRON SURVEYING, INC. 301 SOUTH CANAL (575) 234-3341 CARLSBAD, NEW MEXICO

SECTION 6, TOWNSHIP 26 SOUTH, RANGE 35 EAST, N.M.P.M.  
LEA COUNTY, STATE OF NEW MEXICO  
**AERIAL PHOTO**



NOT TO SCALE  
AERIAL PHOTO:  
GOOGLE EARTH  
APRIL 2013

**DEVON ENERGY PRODUCTION COMPANY, L.P.**

**BILLIKEN "6" FED 2H**

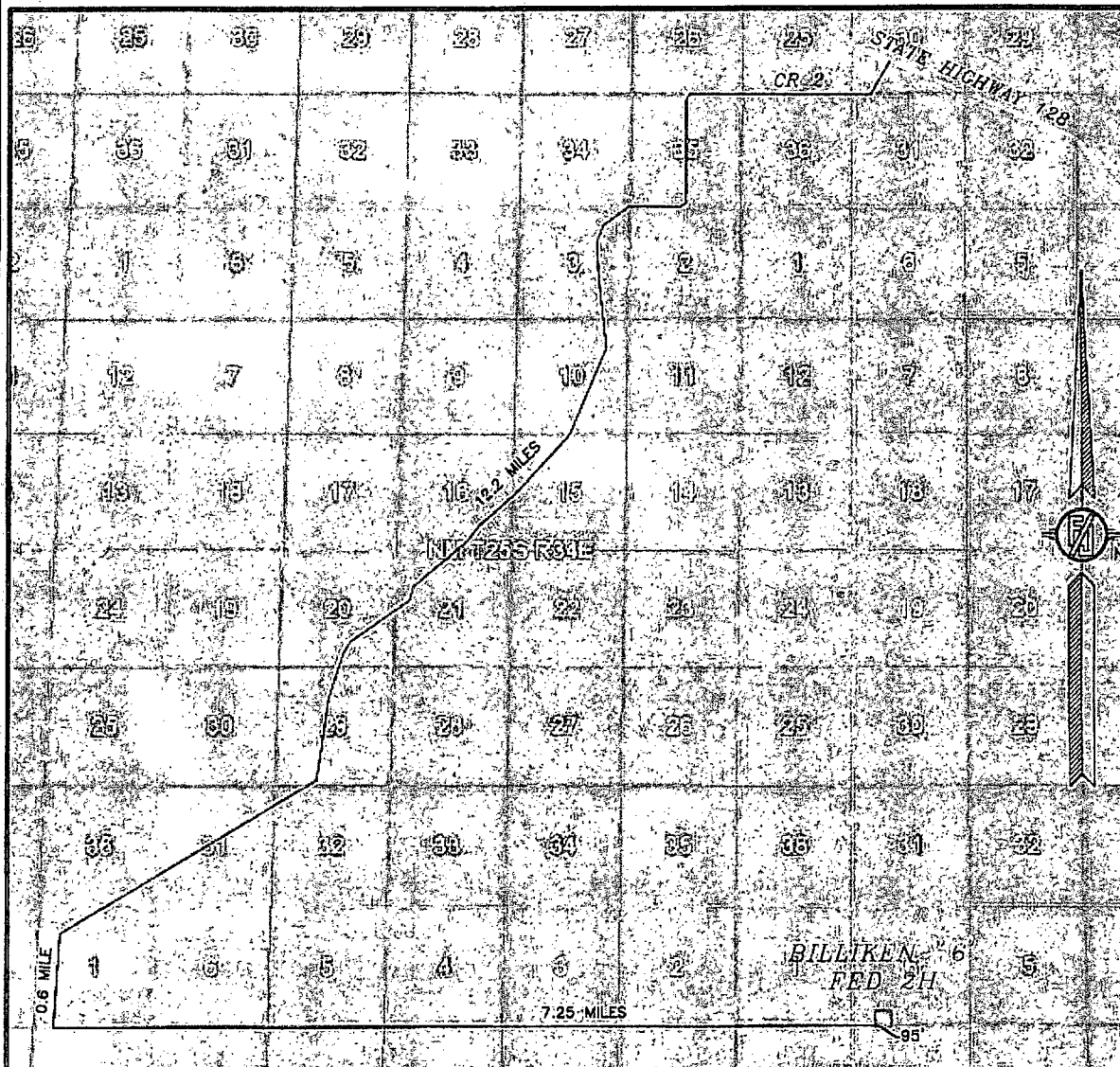
LOCATED 265 FT. FROM THE SOUTH LINE  
AND 1345 FT. FROM THE WEST LINE OF  
SECTION 6, TOWNSHIP 26 SOUTH,  
RANGE 35 EAST, N.M.P.M.  
LEA COUNTY, STATE OF NEW MEXICO

JUNE 9, 2015

SURVEY NO. 4023

MADRON SURVEYING, INC. 301 SOUTH CANAL (575) 234-3341 CARLSBAD, NEW MEXICO

SECTION 6, TOWNSHIP 26 SOUTH, RANGE 35 EAST, N.M.P.M.  
LEA COUNTY, STATE OF NEW MEXICO  
ACCESS AERIAL ROUTE MAP



NOT TO SCALE  
AERIAL PHOTO:  
GOOGLE EARTH  
APRIL 2013

DEVON ENERGY PRODUCTION COMPANY, L.P.

**BILLIKEN "6" FED 2H**

LOCATED 265 FT. FROM THE SOUTH LINE  
AND 1345 FT. FROM THE WEST LINE OF  
SECTION 6, TOWNSHIP 26 SOUTH,  
RANGE 35 EAST, N.M.P.M.  
LEA COUNTY, STATE OF NEW MEXICO

JUNE 9, 2015

SURVEY NO. 4023

MADRON SURVEYING, INC. 301 SOUTH CANAL (575) 234-3341 CARLSBAD, NEW MEXICO