

SEP 21 2015

District I
1625 N. French Dr., Hobbs, NM 88240
Phone: (575) 393-6161 Fax: (575) 393-0720

District II
811 S. First St., Artesia, NM 88210
Phone: (575) 748-1283 Fax: (575) 748-9720

District III
1000 Rio Brazos Road, Aztec, NM 87410
Phone: (505) 334-6178 Fax: (505) 334-6170

District IV
1220 S. St. Francis Dr., Santa Fe, NM 87505
Phone: (505) 476-3460 Fax: (505) 476-3462

State of New Mexico
Energy, Minerals & Natural Resources Department
OIL CONSERVATION DIVISION
1220 South St. Francis Dr.
Santa Fe, NM 87505

RECEIVED

Form C-102
Revised August 1, 2011
Submit one copy to appropriate
District Office

☐ AMENDED REPORT

WELL LOCATION AND ACREAGE DEDICATION PLAT

¹ API Number 30-025-42801	² Pool Code 97838	³ Pool Name Jennings; Upper BONE Spring Shale
⁴ Property Code 314266	⁵ Property Name SD WE 14 FED P5	⁶ Well Number 2H
⁷ OGRID No. 4323	⁸ Operator Name CHEVRON U.S.A. INC.	⁹ Elevation 3157'

¹⁰ Surface Location

UL or lot no.	Section	Township	Range	Lot Idn	Feet from the	North/South line	Feet from the	East/West line	County
M	14	26 SOUTH	32 EAST, N.M.P.M.		10'	SOUTH	673'	WEST	LEA

¹¹ Bottom Hole Location If Different From Surface

UL or lot no.	Section	Township	Range	Lot Idn	Feet from the	North/South line	Feet from the	East/West line	County
D	14	26 SOUTH	32 EAST, N.M.P.M.		280'	NORTH	990'	WEST	LEA

¹² Dedicated Acres	¹³ Joint or Infill	¹⁴ Consolidation Code	¹⁵ Order No.
160			

No allowable will be assigned to this completion until all interests have been consolidated or a non-standard unit has been approved by the division.

<p>Proposed Last Take Point 330' FNL, 987' FWL</p> <p>Proposed First Take Point 330' FSL, 693' FWL</p>	<p>PROPOSED BOTTOM HOLE LOCATION</p> <p>X= 711,570 NAD 27 Y= 382,370 LAT. 32.049411 LONG. 103.650477</p> <p>X= 752,757 NAD83 Y= 382,427 LAT. 32.049536 LONG. 103.650947</p>	<p>¹⁷ OPERATOR CERTIFICATION</p> <p>I hereby certify that the information contained herein is true and complete to the best of my knowledge and belief, and that this organization either owns a working interest or unleased mineral interest in the land including the proposed bottom hole location or has a right to drill this well at this location pursuant to a contract with an owner of such a mineral or working interest, or to a voluntary pooling agreement or a compulsory pooling order heretofore entered by the division.</p> <p>Cindy Herrera-Murillo 4-27-15 Signature Date Cindy Herrera-Murillo Printed Name Cherreramurillo@chevron.com E-mail Address</p>
	<p>CORNER COORDINATES TABLE (NAD 27)</p> <p>A - Y=382643.92, X=710579.74 B - Y=382652.25, X=711907.34 C - Y=378633.33, X=710590.73 D - Y=378643.30, X=711921.56 E - Y=377296.47, X=710594.39 F - Y=377306.99, X=711926.30</p>	<p>¹⁸ SURVEYOR CERTIFICATION</p> <p>I hereby certify that the well location shown on this plat was plotted from field notes of actual surveys made by me or under my supervision, and that the same is true and correct to the best of my belief.</p> <p>10-29-14 Date of Survey Signature and Seal of Professional Surveyor NEW MEXICO REGISTERED PROFESSIONAL SURVEYOR 15078 Certificate Number #15078 pu</p>

SEP 23 2015

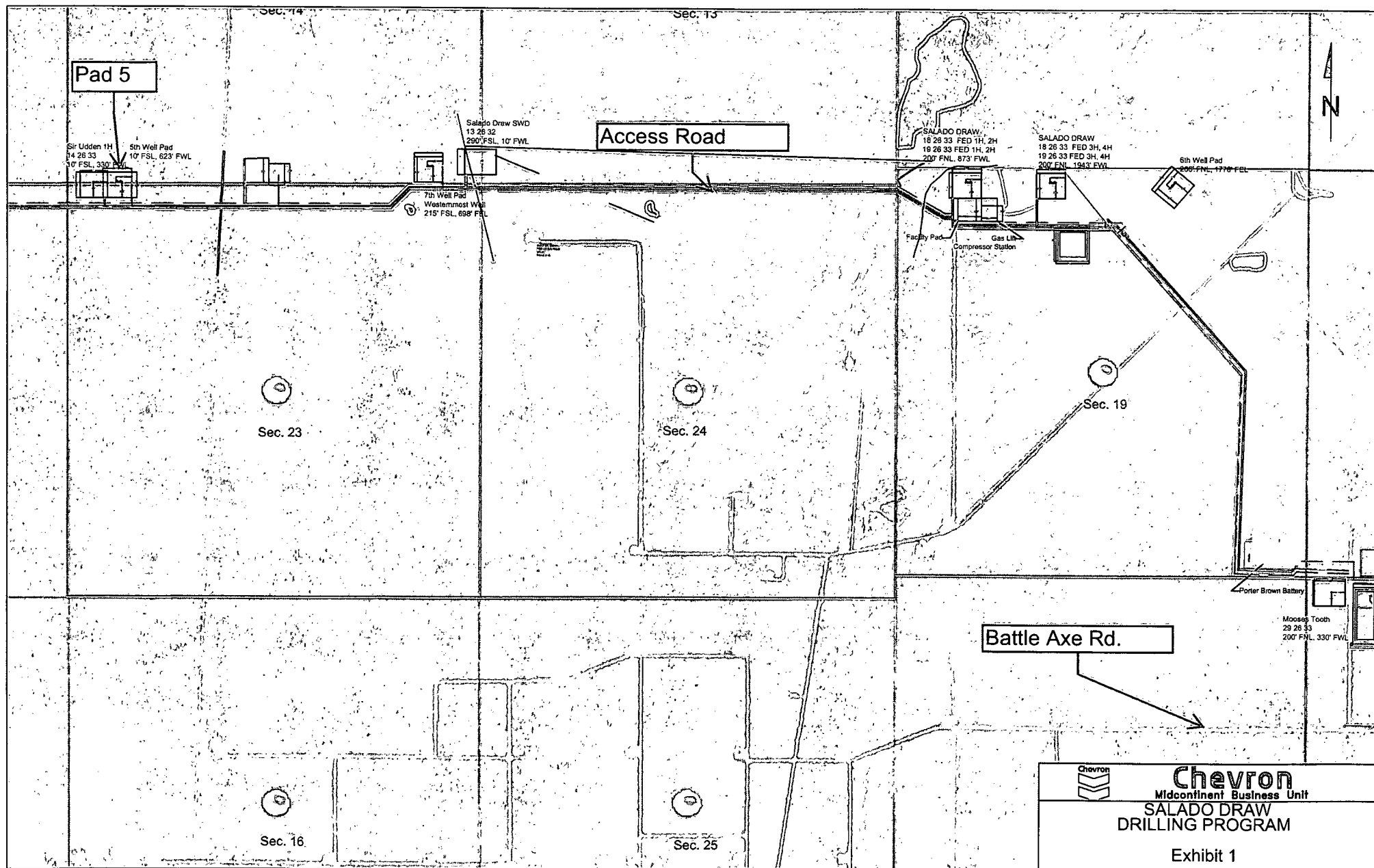


Exhibit 2

R 32 E

Sec. 14

Bureau of Land Management

SEE
PAGE 1

T
26
S

Sec. 23

Bureau of Land Management

FOR THE EXCLUSIVE USE OF
CHEVRON U.S.A. INC.

I, WM. J. Daniel III, Registered Professional
Land Surveyor, do hereby state this plat is true
and correct to the best of my knowledge.

NOTE:

Please be advised, that while reasonable efforts are made to locate and verify pipelines and anomalies using our standard pipeline locating equipment, it is impossible to be 100 % effective. As such, we advise using caution when performing work as there is a possibility that pipelines and other hazards, such as fiber optic cables, PVC pipelines, etc. may exist undetected on site.

NOTE:

Many states maintain information centers that establish links between those who dig (excavators) and those who own and operate underground facilities (operators). It is advisable and in most states, law, for the contractor to contact the center for assistance in locating and marking underground utilities. For guidance: New Mexico One Call - www.nmonecall.org

DISCLAIMER: At this time, C.H. Fenstermaker & Associates, LLC has not performed nor was asked to perform any type of engineering, hydrological modeling, flood plain, or "No Rise" certification analyses, including but not limited to determining whether the project will impact flood hazards in connection with federal/FEMA, state, and/or local laws, ordinances and regulations. Accordingly, Fenstermaker makes no warranty or representation of any kind as to the foregoing issues, and persons or entities using this information shall do so at their own risk.

LEGEND

Section Line

• **Fence Line**

- Ditch

Existing P-06

SURFACE USE PLAT

CHEVRON U.S.A. INC.
PROPOSED PAD & ACCESS ROAD
SIR UDDEN NO. 1H WELL
SECTIONS 14 & 23, T26S-R32E
LEA COUNTY, NEW MEXICO

Page 2 of 2

DRAWN BY: BOR

REVISIONS

PROJ. MGR.: VHV

No.

DATE:

REVISÉD BY:

DATE: AUGUST 27, 2014 No.

No.

DATE:

REVISÉD BY:

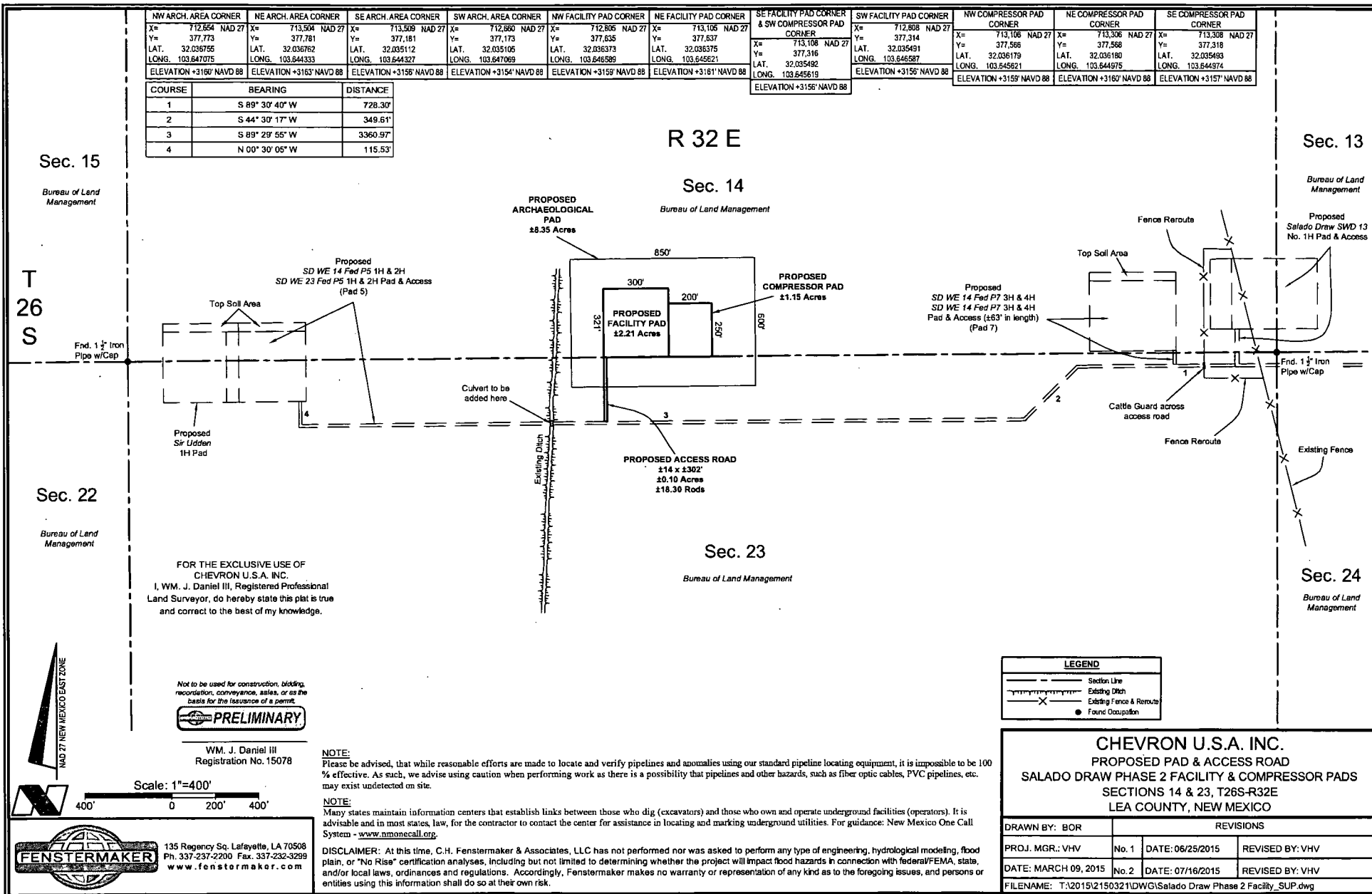
FILENAME: T:\2014\2146715\DWG\Sir Udden 1H_SUP.dwg



135 Regency Sq. Lafayette, LA 70508
Ph. 337-237-2200 Fax. 337-232-3299
www.fenstermaker.com



Scale: 1"=400'



Sec 14



Flowlines - Approx. 1,950 ft.
Gas Lift P/L - Approx. 2,319 ft
SWD Transfer P/L - Approx. 3,990 ft.

Sir Udden 1H 5th Well Pad
14' 26' 33" 10' FSL, 623' FWL
10' FSL, 330' FWL

Salado Draw SWD
13' 26' 32"
290' FSL, 10' FWL

7th Well Pad
Westernmost Well
215' FSL, 698' FWL

Cattle Guard
across road

Powerline -
Approx. 4,733 ft

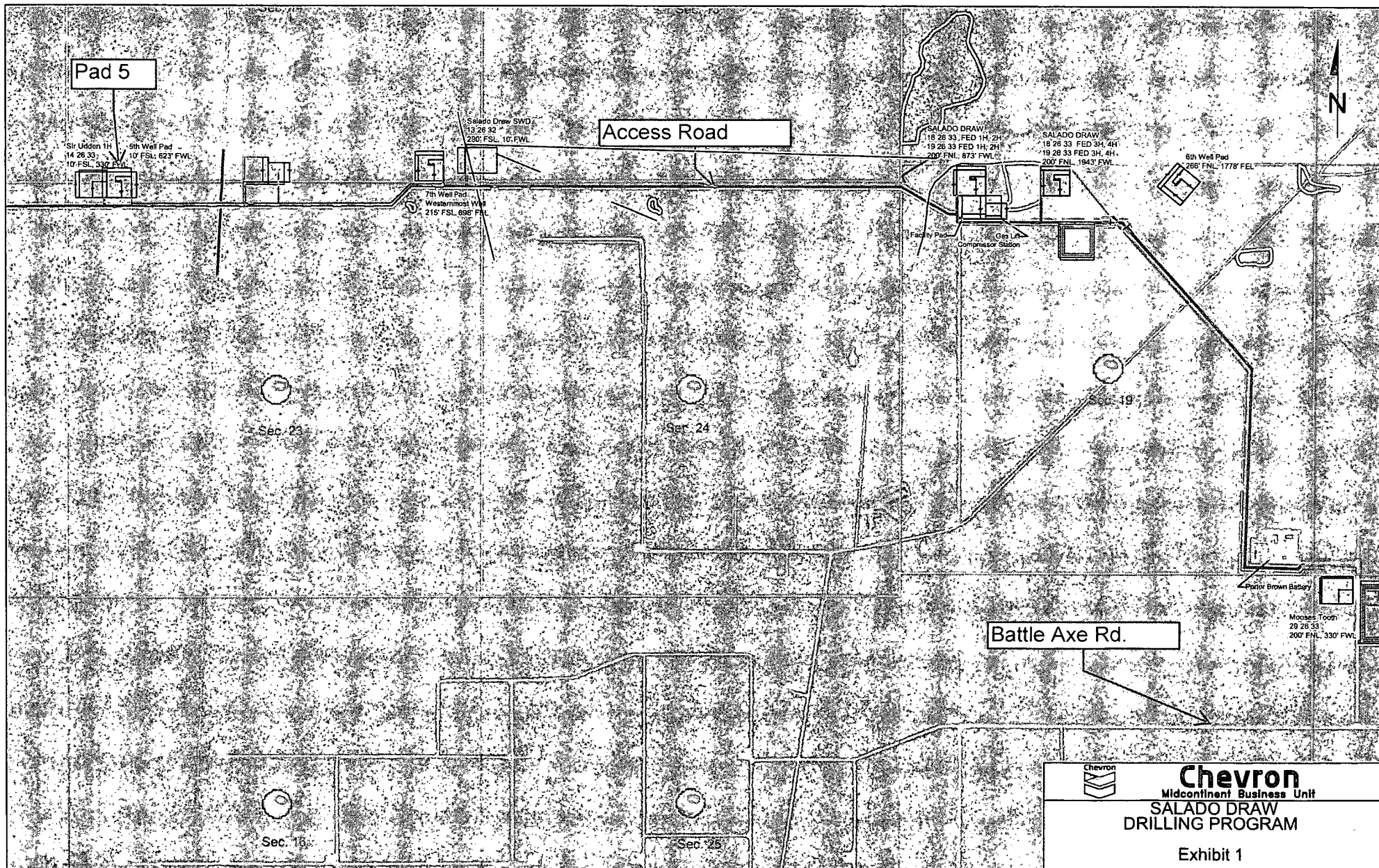
Ditch (culvert
to be added)

Access Road



Chevron
Midcontinent Business Unit

**SALADO DRAW
DRILLING PROGRAM
EXHIBIT 5**



Chevron
Midcontinent Business Unit
**SALADO DRAW
DRILLING PROGRAM**

Exhibit 1

WE 14 FED P5 1H
TWN 26S - RNG 32E - SEC 14
LEA, CO NM

Surface and Bottom hole locations - 1 mile radius

Exhibit 3

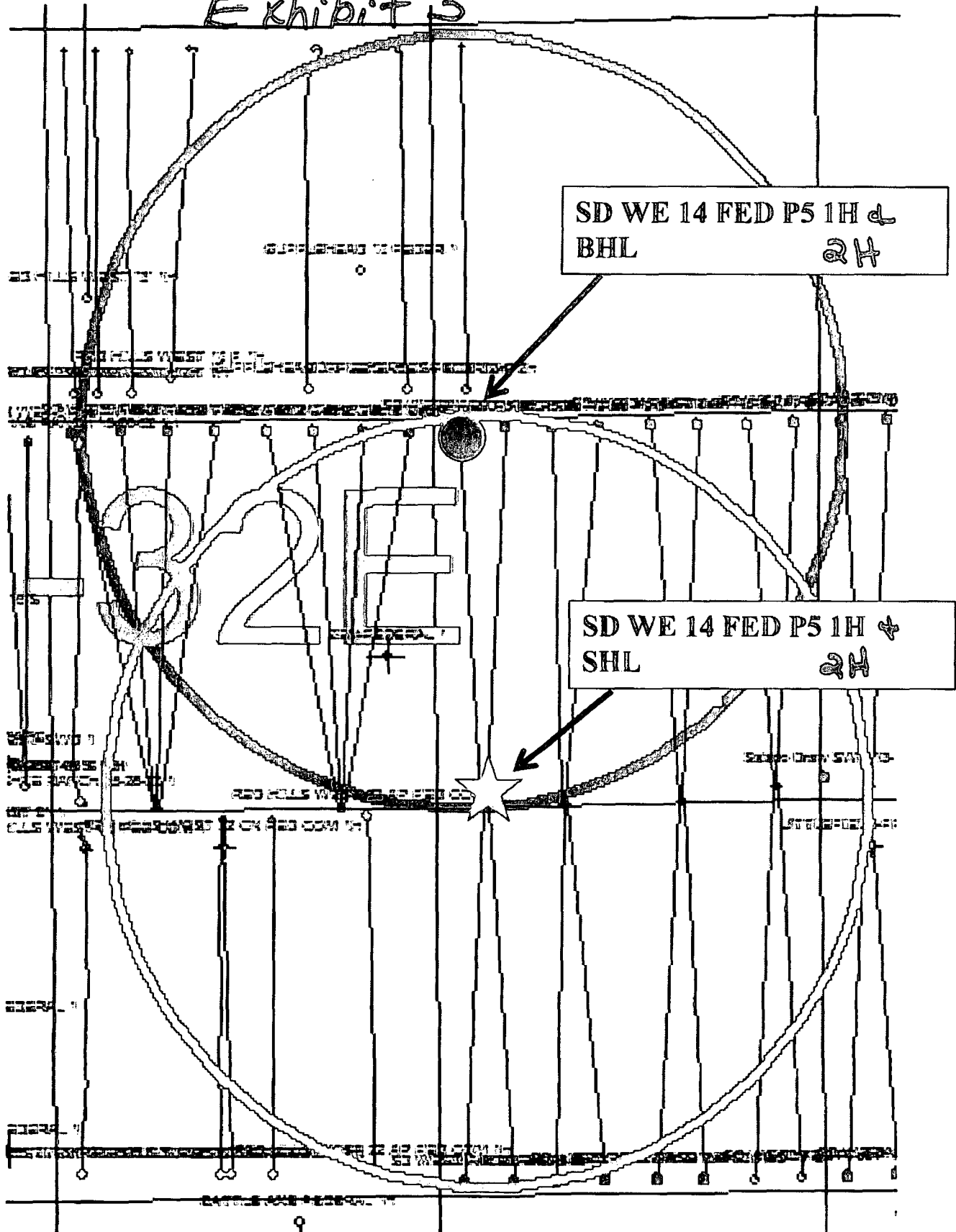
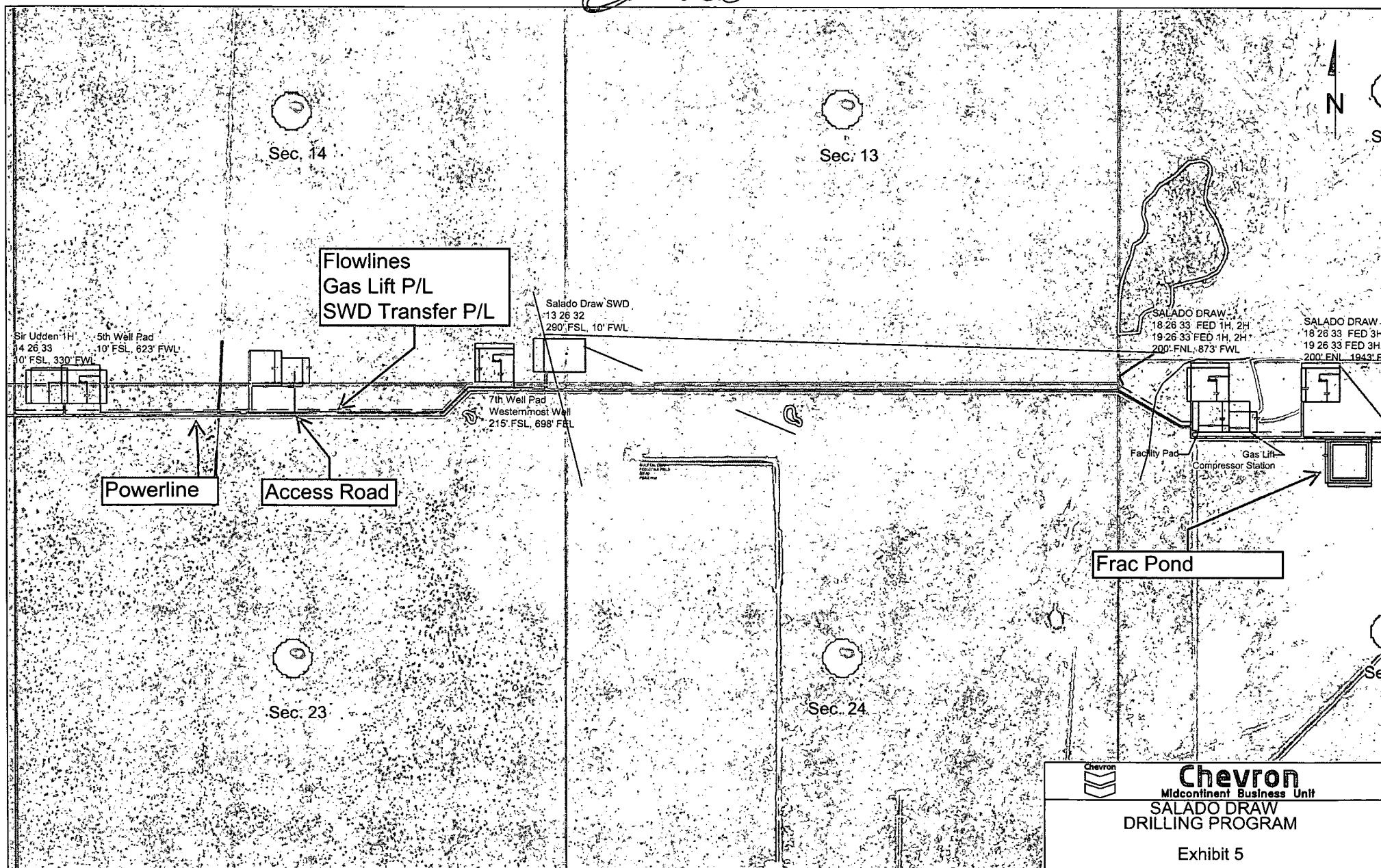


Exhibit 5



Chevron

Midcontinent Business Unit

**SALADO DRAW
DRILLING PROGRAM**

Exhibit 5

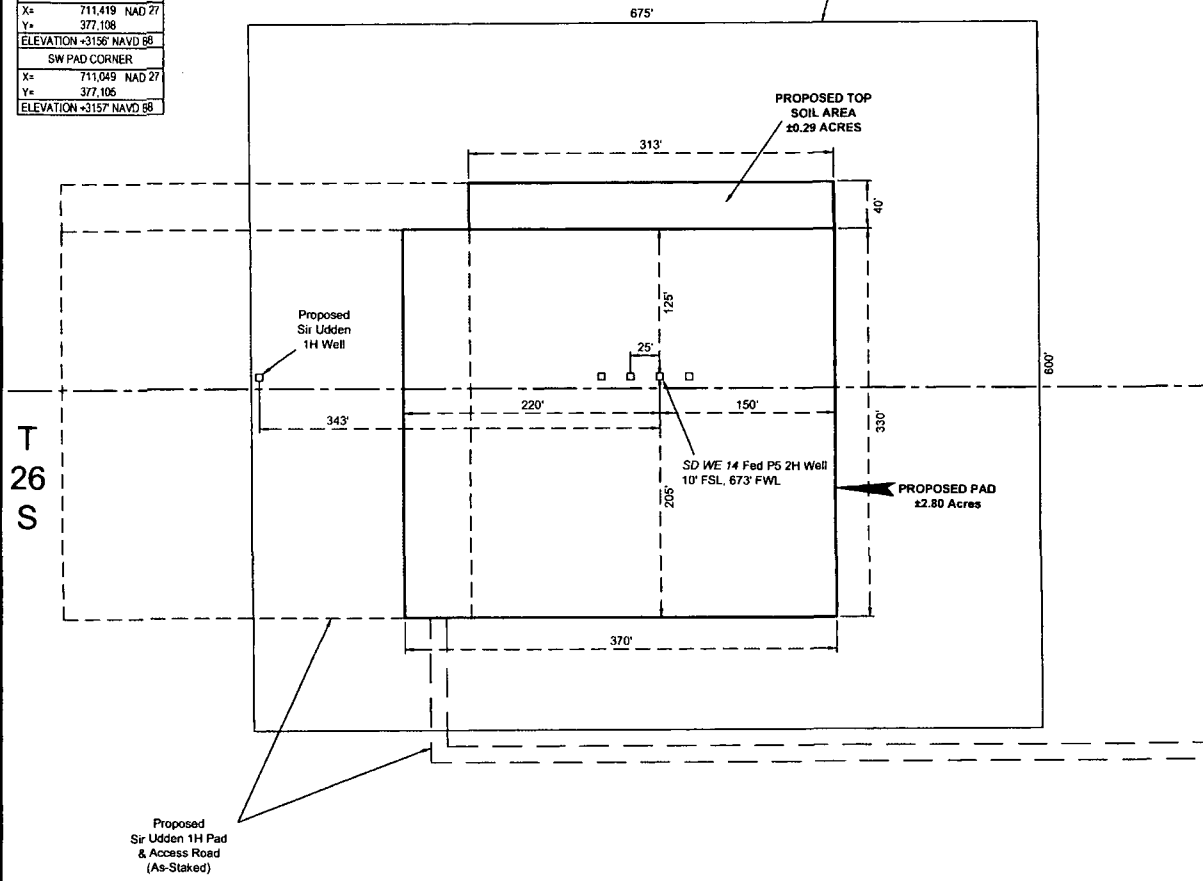
Exhibit 6

R 32 E

Sec. 14

Bureau of Land Management

SD WE 14 FED P5 2H WELL	NW TOP SOIL AREA CORNER	NW ARCH AREA CORNER
X= 711,257 NAD 27	X= 711,103 NAD 27	X= 710,915 NAD 27
Y= 377,312	Y= 377,475	Y= 377,609
LAT. 32.035612	ELEVATION = 3157' NAVD 88	ELEVATION = 3156' NAVD 88
LONG. 103.651558	NE TOP SOIL AREA CORNER	NE ARCH AREA CORNER
X= 712,435 NAD 83	X= 711,416 NAD 27	X= 711,590 NAD 27
Y= 377,369	Y= 377,478	Y= 377,615
LAT. 32.035637	ELEVATION = 3157' NAVD 88	ELEVATION = 3155' NAVD 88
LONG. 103.652028	SW TOP SOIL AREA CORNER	SE ARCH AREA CORNER
ELEVATION = 3157' NAVD 88	X= 711,103 NAD 27	X= 711,595 NAD 27
NW PAD CORNER	Y= 377,436	Y= 377,615
X= 711,047 NAD 27	ELEVATION = 3158' NAVD 88	ELEVATION = 3154' NAVD 88
Y= 377,435	SE ARCH AREA CORNER	SW ARCH AREA CORNER
ELEVATION = 3157' NAVD 88	X= 710,920 NAD 27	X= 710,920 NAD 27
NE PAD CORNER & SE TOP SOIL AREA CORNER	Y= 377,009	Y= 377,009
X= 711,417 NAD 27	ELEVATION = 3154' NAVD 88	
Y= 377,438		
ELEVATION = 3157' NAVD 88		
SE PAD CORNER		
X= 711,419 NAD 27		
Y= 377,108		
ELEVATION = 3156' NAVD 88		
SW PAD CORNER		
X= 711,049 NAD 27		
Y= 377,106		
ELEVATION = 3157' NAVD 88		



Sec. 23

Bureau of Land Management

FOR THE EXCLUSIVE USE OF
CHEVRON U.S.A. INC.
I, WM. J. DANIEL III, Registered Professional
Land Surveyor, do hereby state this plat is true
and correct to the best of my knowledge.



WM. J. DANIEL III
Registration No. 15078

NOTE:

Please be advised, that while reasonable efforts are made to locate and verify pipelines and anomalies using our standard pipeline locating equipment, it is impossible to be 100 % effective. As such, we advise using caution when performing work as there is a possibility that pipelines and other hazards, such as fiber optic cables, PVC pipelines, etc. may exist undetected on site.

NOTE:

Many states maintain information centers that establish links between those who dig (excavators) and those who own and operate underground facilities (operators). It is advisable and in most states, law, for the contractor to contact the center for assistance in locating and marking underground utilities. For guidance, New Mexico One Call, www.nmonecall.org.

DISCLAIMER: At this time, C.H. Fenstermaker & Associates, LLC has not performed nor was asked to perform any type of engineering, hydrological modeling, flood plain, or "No Rise" certification analyses, including but not limited to determining whether the project will impact flood hazards in connection with federal/FEMA, state, and/or local laws, ordinances and regulations. Accordingly, Fenstermaker makes no warranty or representation of any kind as to the foregoing issues, and persons or entities using this information shall do so at their own risk.

LEGEND

Section Line
Proposed Well
Proposed Road

CHEVRON U.S.A. INC.

PROPOSED PAD
SD WE 14 FED P5 2H WELL
SECTIONS 14 & 23, T26S-R32E
LEA COUNTY, NEW MEXICO



135 Regency Sq. Lafayette, LA 70508
Ph. 337-237-2200 Fax. 337-232-3298
www.fenstermaker.com

Scale: 1"=100'
100' 0 50' 100'

DRAWN BY: TPD		REVISIONS	
PROJ. MGR.: VHV	No.	DATE:	REVISED BY:
DATE: OCTOBER 15, 2014	No.	DATE:	REVISED BY:
FILENAME: T:\2014\2146719\DWG\SD WE 14 Fed P5 2H SUP.dwg			

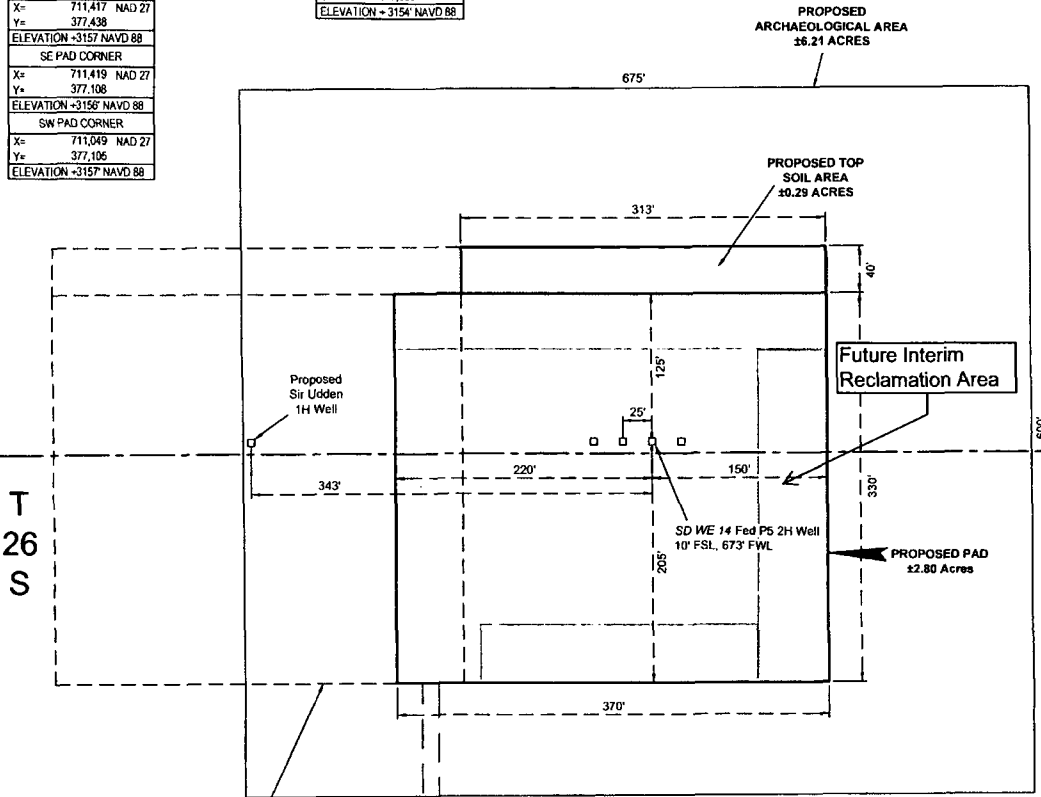
Exhibit 7

R 32 E

Sec. 14

Bureau of Land Management

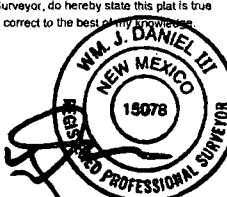
SD WE 14 FED P5 2H WELL	NW TOP SOIL AREA CORNER	NW ARCH AREA CORNER
X= 711,267 NAD 27	X= 711,103 NAD 27	X= 710,915 NAD 27
Y= 377,312	Y= 377,475	Y= 377,609
LAT. 32.035512	ELEVATION = 3157' NAVD 88	ELEVATION = 3158' NAVD 88
LONG. 103.651556	NE TOP SOIL AREA CORNER	NE ARCH AREA CORNER
X= 752,455 NAD83	X= 711,418 NAD 27	X= 711,590 NAD 27
Y= 377,369	Y= 377,478	Y= 377,615
LAT. 32.035637	ELEVATION = 3157' NAVD 88	ELEVATION = 3159' NAVD 88
LONG. 103.652028	SW TOP SOIL AREA CORNER	SE ARCH AREA CORNER
ELEVATION = 3157' NAVD 88	X= 711,103 NAD 27	X= 711,595 NAD 27
NW PAD CORNER	Y= 377,436	Y= 377,015
X= 711,047 NAD 27	ELEVATION = 3158' NAVD 88	ELEVATION = 3154' NAVD 88
Y= 377,435	SW ARCH AREA CORNER	X= 710,920 NAD 27
ELEVATION = 3157' NAVD 88	X= 711,417 NAD 27	Y= 377,009
NE PAD CORNER & SE TOP SOIL AREA CORNER	Y= 377,438	ELEVATION = 3154' NAVD 88
X= 711,417 NAD 27	SE PAD CORNER	
Y= 377,438	X= 711,419 NAD 27	
ELEVATION = 3157' NAVD 88	Y= 377,108	
SE PAD CORNER	ELEVATION = 3156' NAVD 88	
X= 711,419 NAD 27	SW PAD CORNER	
Y= 377,108	X= 711,049 NAD 27	
ELEVATION = 3156' NAVD 88	Y= 377,106	
SW PAD CORNER	ELEVATION = 3157' NAVD 88	
X= 711,049 NAD 27		
Y= 377,106		
ELEVATION = 3157' NAVD 88		



Sec. 23

Bureau of Land Management

FOR THE EXCLUSIVE USE OF
CHEVRON U.S.A. INC.
I, WM. J. DANIEL III, Registered Professional
Land Surveyor, do hereby state this plat is true
and correct to the best of my knowledge.



WM. J. DANIEL III
Registration No. 15078

NOTE:
Please be advised, that while reasonable efforts are made to locate and verify pipelines and anomalies using our standard pipeline locating equipment, it is impossible to be 100 % effective. As such, we advise using caution when performing work as there is a possibility that pipelines and other hazards, such as fiber optic cables, PVC pipelines, etc. may exist undetected on site.

NOTE:
Many states maintain information centers that establish links between those who dig (excavators) and those who own and operate underground facilities (operators). It is advisable and in most states, law, for the contractor to contact the center for assistance in locating and marking underground utilities. For guidance, New Mexico One Call, www.nmonecall.org.

DISCLAIMER: At this time, C.H. Fenstermaker & Associates, LLC has not performed nor was asked to perform any type of engineering, hydrological modeling, flood plain, or "No Rise" certification analyses, including but not limited to determining whether the project will impact flood hazards in connection with federal/FEMA, state, and/or local laws, ordinances and regulations. Accordingly, Fenstermaker makes no warranty or representation of any kind as to the foregoing issues, and persons or entities using this information shall do so at their own risk.

LEGEND			
---	Section Line		
□	Proposed Well		
---	Proposed Road		

CHEVRON U.S.A. INC.

PROPOSED PAD
SD WE 14 FED P5 2H WELL
SECTIONS 14 & 23, T26S-R32E
LEA COUNTY, NEW MEXICO



135 Regency Sq. Lafayette, LA 70508
Ph. 337-237-2200 Fax. 337-232-3298
www.fenstermaker.com

Scale: 1"=100'
100' 0 50' 100'

DRAWN BY: TPD		REVISIONS	
PROJ. MGR.: VHV	No.	DATE:	REVISED BY:
DATE: OCTOBER 15, 2014	No.	DATE:	REVISED BY:
FILENAME: T:\2014\2146719\DWG\SD WE 14 Fed P5 2H_SUP.dwg			

**Boone Arch Services of NM, LLC
506 E. Chapman Road
Carlsbad, NM 88220**



November 13, 2014

Chevron U.S.A, Inc.
15 Smith Road
Midland, TX 79705
Attn: Stephen Tarr

Re: SD WE 23 Fed P5 #1H & #2H and SD WE 14 Fed P5 #1H & #2H

Dear Mr. Tarr,

Records searches were conducted on November 4, 2014, for the proposed SD WE 23 Fed P5 #1H, SD WE 23 Fed P5 #2H, SD WE 14 Fed P5 #1H and SD WE 14 Fed P5 #2H well pad in Township 26 South (T26S), Range 32 East (R32E), Sections 14 and 23. All wells will be on a single pad.

Sources consulted included Bureau of Land Management Carlsbad Field Office (BLM/CFO) GIS database and the online GIS database maintained by the New Mexico Historic Preservation Division, Archaeological Resource Management Section, in Santa Fe, NM. These records indicate archaeological survey coverage of the project area (NMCRIS #s: 63533, 126220, and 130167). No archaeological sites have been found in the project area and only one site has been previously recorded within a ¼-mile radius.

In consultation with BLM archaeologist Stacy Galassini, it was determined that no additional survey is required. The project is recommended for approval without further archaeological survey as currently staked. A copy of this letter will be forwarded to the BLM Carlsbad archaeologist.

Legal Description: T26S R32E Section 14 S½ SW SW and 23 N½ NW NW, Lea County, New Mexico

Map Reference: U.S.G.S. 7.5' Paduca Breaks West 32103-A6

Sincerely,

Rebecca Hill
Owner/Principal Investigator
Boone Arch Services of NM, LLC

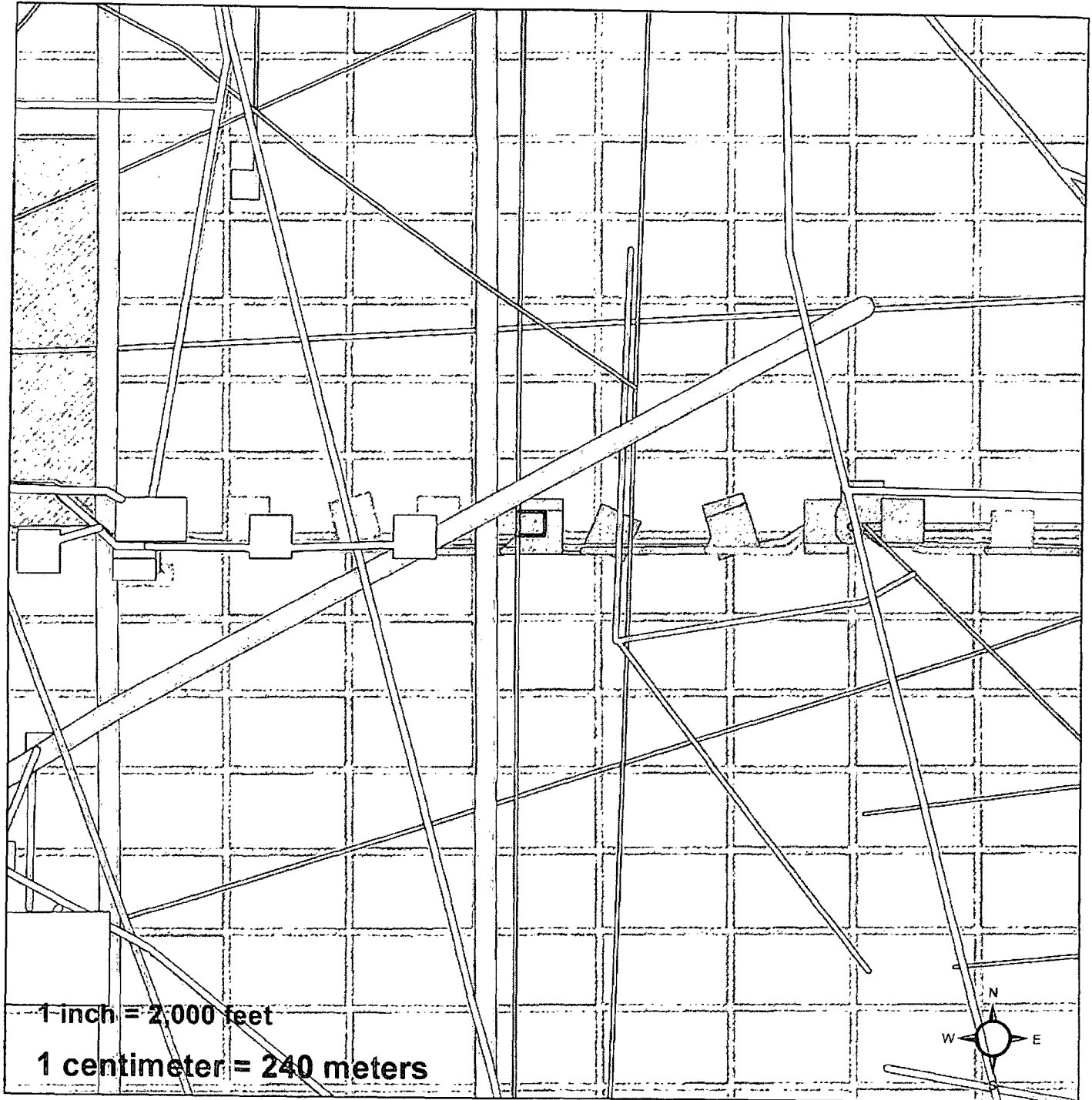
Encl: (1) project map
(2) NMCRIS Map

Office: 575-885-1352

Cell: 575-361-1353

Fax: 575-887-7667

Chevron U.S.A. Inc.
SD WE 23 Fed P5 #1H & #2H and SD WE
14 Fed P5 #1H & #2H



Legend

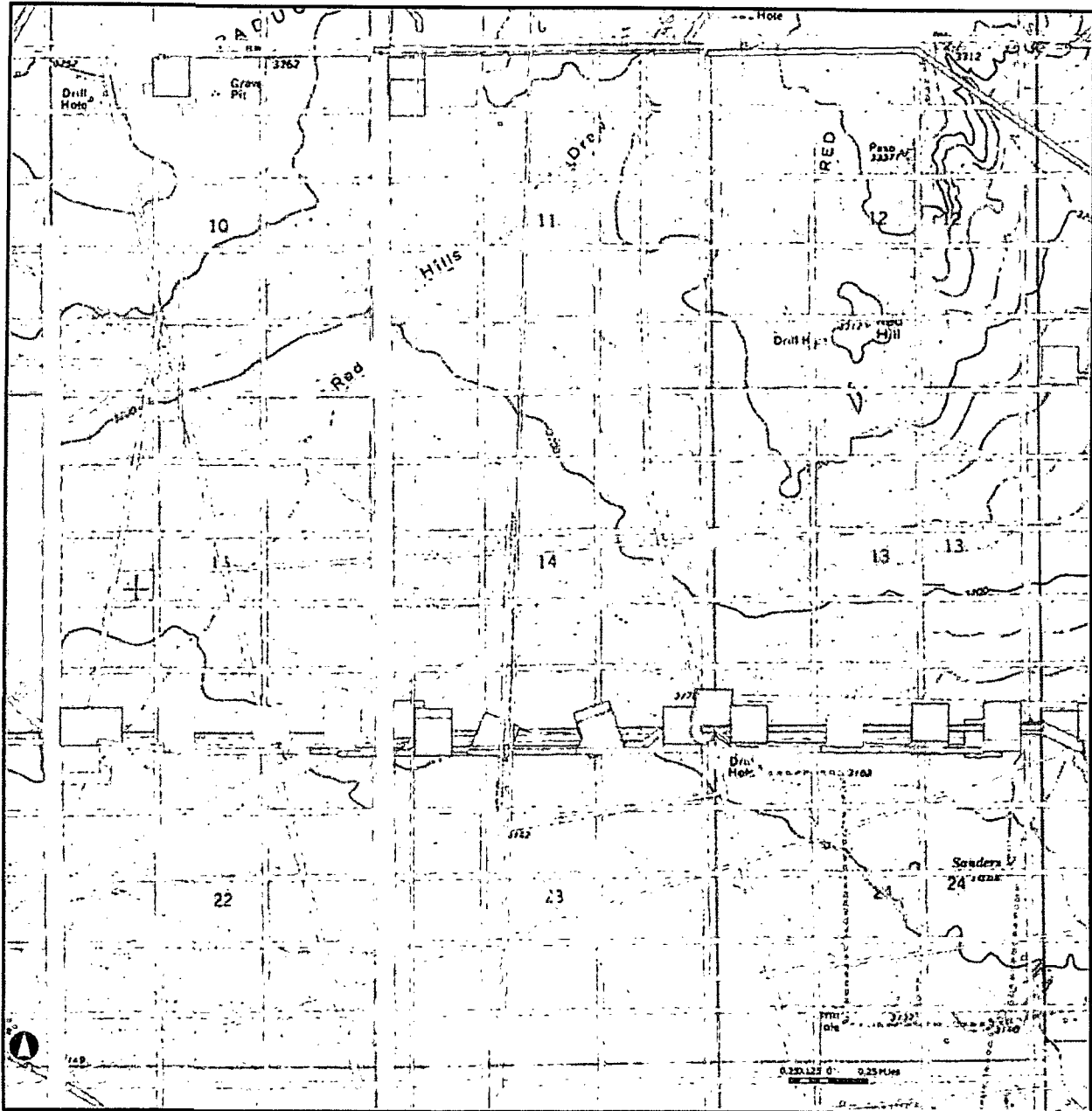
	WellPad	BLM		NPS
	Arch Sites		Private	
		DOE	NM State Trust Lands	
			NM State Game & Fish	
		BOI	NM State Park	

Paduca Breaks West 32103-A6
T26S R32E S14, 23

1:24,000

BASNM 10-14-15

10-14-15 ARMS Map



PLSS

- ☐ Building Labels
- ☐ Object Labels
- ☐ Linear Resource Labels
- ☐ Historic Structure Labels
- ☐ Historic Structures (Edit)

Objects

- ☐ Not Defined
- ☐ Proposed
- ☐ Approved
- Linear Resources
 - ☐ Not Defined
 - ☐ Proposed
 - ☐ Approved
- District Labels

Archaeological Surveys

- ☐ Not Defined
- ☐ Proposed
- ☐ Approved
- Highways
 - ☐ Primary Limited Access or Interstate
 - ☐ Primary US and State Highways
 - ☐ Secondary State and County
 - ☐ Local - Rural

