

District I
1625 N. French Dr., Hobbs, NM 88240
Phone: (575) 393-6161 Fax: (575) 393-0720
District II
811 S. First St., Artesia, NM 88210
Phone: (575) 748-1283 Fax: (575) 748-9720
District III
1000 Rio Brazos Road, Aztec, NM 87410
Phone: (505) 334-6178 Fax: (505) 334-6170
District IV
1220 S. St. Francis Dr., Santa Fe, NM 87505
Phone: (505) 476-3460 Fax: (505) 476-3462

State of New Mexico
Energy, Minerals & Natural Resources Department
OIL CONSERVATION DIVISION
1220 South St. Francis Dr.
Santa Fe, NM 87505

HOBBS

OCT 01 2015

RECEIVED

Form C-102

Revised August 1, 2011

Submit one copy to appropriate

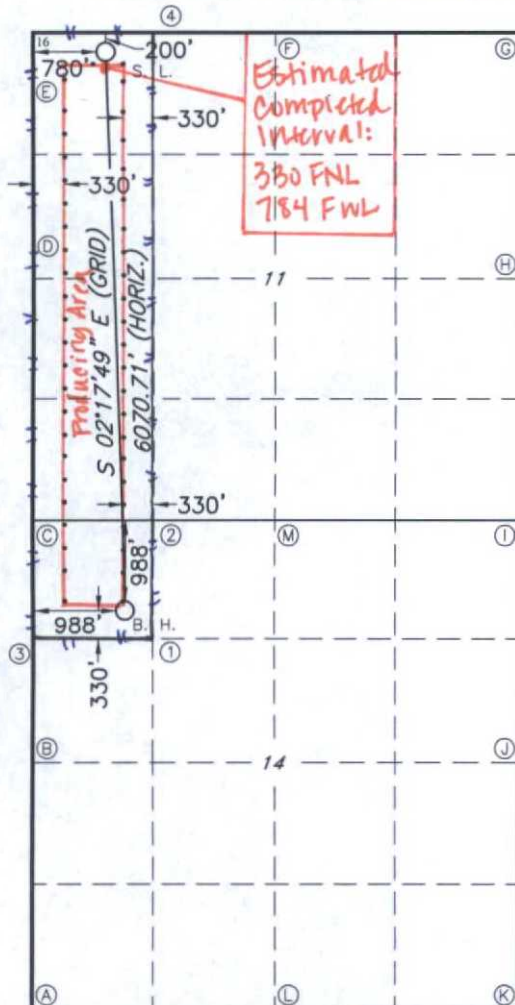

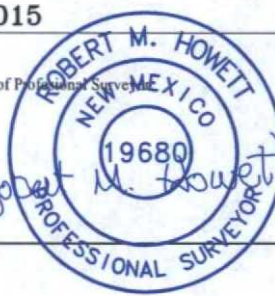
District Office

☐ AMENDED REPORT

WELL LOCATION AND ACREAGE DEDICATION PLAT

1 API Number 30-025- 42819		2 Pool Code 44500		3 Pool Name Maljamar; Yeso West					
4 Property Code 39256		5 Property Name PAN HEAD FEE						6 Well Number 22H	
7 OGRID NO. 229137		8 Operator Name COG OPERATING, LLC						9 Elevation 4172'	
10 Surface Location									
UL or lot no. D	Section 11	Township 17S	Range 32E	Lot Idn	Feet from the 200	North/South line NORTH	Feet From the 780	East/West line WEST	County LEA
11 Bottom Hole Location If Different From Surface									
UL or lot no. D	Section 14	Township 17S	Range 32E	Lot Idn	Feet from the 988	North/South line NORTH	Feet from the 988	East/West line WEST	County LEA
12 Dedicated Acres 200		13 Joint or Infill		14 Consolidation Code		15 Order No.			

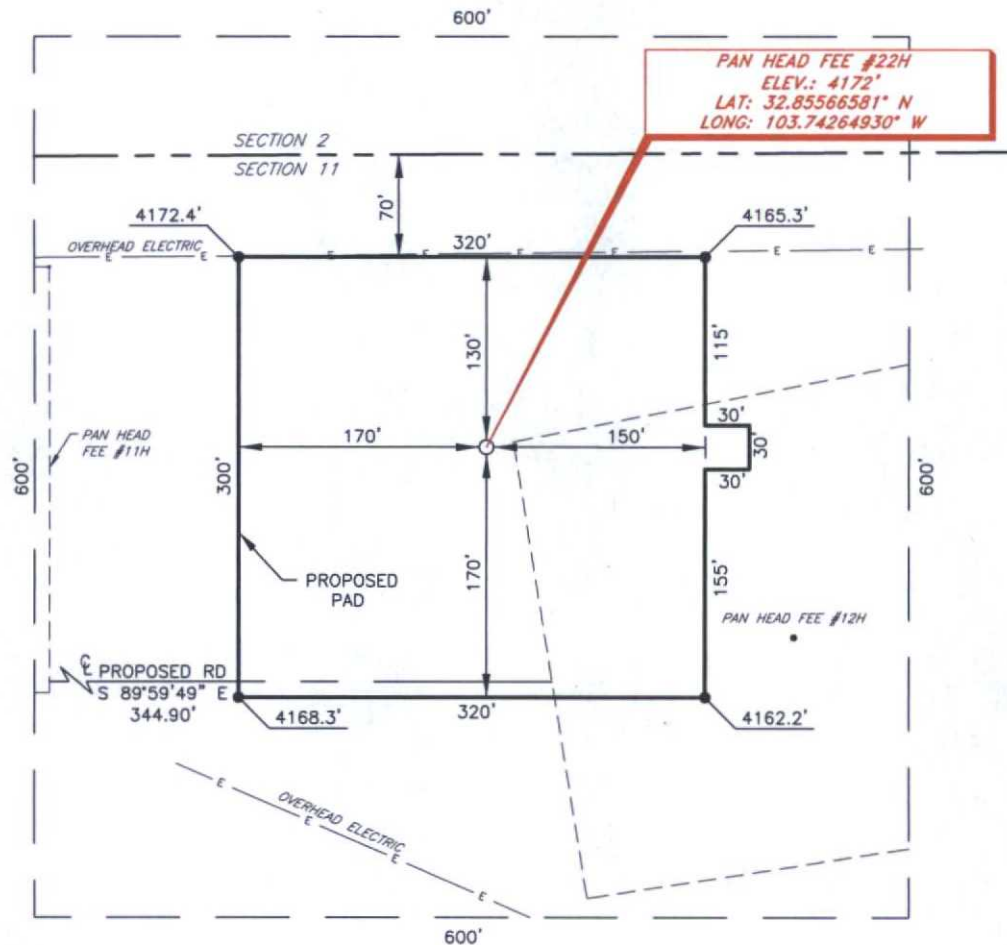
No allowable will be assigned to this completion until all interest have been consolidated or a non-standard unit has been approved by the division.

	<p>GEODETIC DATA NAD 27 GRID - NM EAST 1: CALCULATED POINT N 669116.0 - E 681964.8 SURFACE LOCATION N 675509.8 - E 681389.4 LAT: 32.85566581° N LONG: 103.74264930° W BOTTOM HOLE N 669445.4 - E 681632.7 2: CALCULATED POINT N 670432.5 - E 681955.9 3: CALCULATED POINT N 669114.1 - E 680646.9 4: CALCULATED POINT N 675712.0 - E 681927.0</p>	<p>17 OPERATOR CERTIFICATION I hereby certify that the information contained herein is true and complete to the best of my knowledge and belief, and that this organization either owns a working interest or unleased mineral interest in the land including the proposed bottom hole location or has a right to drill this well at this location pursuant to a contract with an owner of such a mineral or working interest, or to a voluntary pooling agreement or a compulsory pooling order heretofore entered by the division. Signature  Date 9-28-15 Printed Name Kelly J. Holly E-mail Address kholly@concho.com</p>
	<p>CORNER DATA NAD 27 GRID - NM EAST A: FOUND BRASS CAP "1913" N 665155.6 - E 680671.4 B: FOUND BRASS CAP "1913" N 667794.8 - E 680655.1 C: FOUND BRASS CAP "1913" N 670433.3 - E 680638.7 D: FOUND BRASS CAP "1913" N 673071.1 - E 680625.4 E: FOUND BRASS CAP "1913" N 675706.5 - E 680608.1 F: FOUND BRASS CAP "1913" N 675717.6 - E 683245.8 G: FOUND BRASS CAP "1913" N 675728.9 - E 685884.7 H: FOUND BRASS CAP "1913" N 673091.0 - E 685901.5 I: FOUND BRASS CAP "1913" N 670452.7 - E 685918.1 J: FOUND BRASS CAP "1913" N 667813.8 - E 685935.1 K: FOUND BRASS CAP "1913" N 665174.0 - E 685951.4 L: FOUND BRASS CAP "1913" N 665164.7 - E 683311.6 M: FOUND BRASS CAP "1913" N 670431.7 - E 683273.2</p>	<p>18 SURVEYOR CERTIFICATION I hereby certify that the well location shown on this plat was plotted from field notes of actual surveys made by me or under my supervision, and that the same is true and correct to the best of my belief. Date of Survey 6-15-2015 Signature and Seal of Professional Surveyor  Certificate Number 19680</p>

RRC - Firm No.: TX 10193838 NM 4655451 - Job No.: LS1505217

OCT 07 2015

COG OPERATING, LLC
 PAN HEAD FEE #22H
 (200' FNL & 780' FWL)
 SECTION 11, T17S, R32E
 N. M. P. M., LEA CO., NEW MEXICO



DIRECTIONS TO LOCATION

From the intersection of U.S. Hwy. 82 and CR-249 (Tower Rd.);
 Go Northeast on U.S. Hwy. 82 approx. 200 feet to a lease road on the right;
 Turn right and go Southeast approx. 0.9 miles to a lease road on the right;
 Turn right and go Southwest approx. 0.3 miles to a lease road on the right;
 Turn right and go West approx. 0.2 miles to the Pan Head Fee #12H;
 Turn right and go Northwest approx. 500 feet to this location.

SCALE: 1" = 100'
 0 50 100
 BEARINGS ARE
 NAD 27 GRID - NM EAST
 DISTANCES ARE
 GROUND.

Firm No.: TX 10193838 NM 4655451

Copyright 2015 - All Rights Reserved

NO.	REVISION	DATE
JOB NO.:	LS1505217	
DWG. NO.:	1505217PAD	

RRC

308 W. BROADWAY ST., HOBBS, NM 88240 (575) 964-8200

SCALE: 1" = 100'
DATE: 6-15-15
SURVEYED BY: BC/ER
DRAWN BY: JC
APPROVED BY: RMH
SHEET : 1 OF 1

VICINITY MAP

NOT TO SCALE



PAN HEAD FEE #22H

*SECTION 11, TWP. 17 SOUTH, RGE. 32 EAST,
N. M. P. M., LEA CO., NEW MEXICO*

OPERATOR: COG Operating, LLC
LEASE: Pan Head Fee
WELL NO.: 22H

LOCATION: 200' FNL & 780' FWL
ELEVATION: 4172'

Firm No.: TX 10193838 NM 4655451

Copyright 2015 - All Rights Reserved

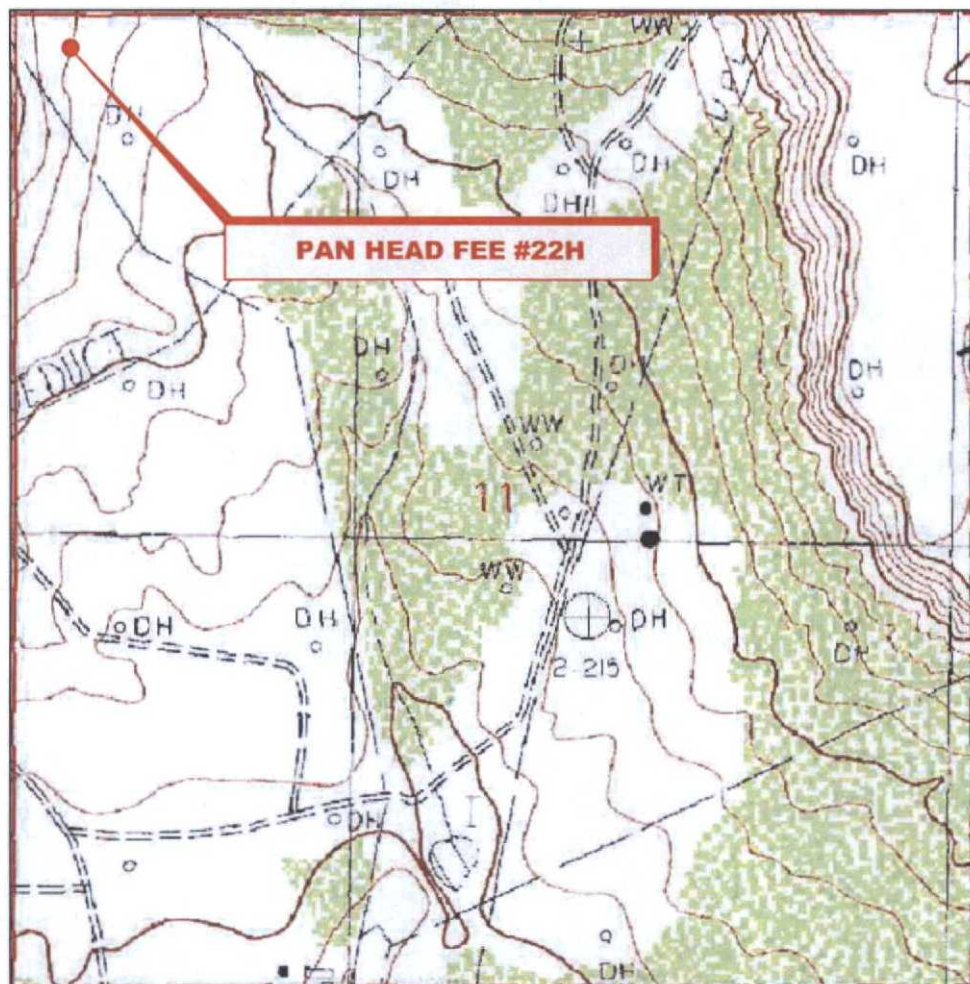
NO.	REVISION	DATE
JOB NO.:	LS1505217	
DWG. NO.:	1505217VM	

RRC

308 W. BROADWAY ST., HOBBS, NM 88240 (575) 964-8200

SCALE: NTS
DATE: 6-15-15
SURVEYED BY: BC/ER
DRAWN BY: JC
APPROVED BY: RMH
SHEET : 1 OF 1

LOCATION VERIFICATION MAP



*SECTION 11, TWP. 17 SOUTH, RGE. 32 EAST,
N. M. P. M., LEA CO., NEW MEXICO*

OPERATOR: COG Operating, LLC
LEASE: Pan Head Fee
WELL NO.: 22H
ELEVATION: 4172'

LOCATION: 200' FNL & 780' FWL
CONTOUR INTERVAL: 10'
USGS TOPO. SOURCE MAP:
Dog Lake, NM (P. E. 1985)

Firm No.: TX 10193838 NM 4655451

Copyright 2015 - All Rights Reserved

NO.	REVISION	DATE
JOB NO.:	LS1505217	
DWG. NO.:	1505217LVM	

RRC

308 W. BROADWAY ST., HOBBS, NM 88240 (575) 964-8200

SCALE: 1"=1000'
DATE: 6-15-15
SURVEYED BY: BC/ER
DRAWN BY: JC
APPROVED BY: RMH
SHEET : 1 OF 1