

District I
1625 N. French Dr., Hobbs, NM 88240
Phone: (575) 393-6161 Fax: (575) 393-0720
District II
511 S. First St., Artesia, NM 88210
Phone: (575) 748-1283 Fax: (575) 748-9720
District III
1000 Rio Brazos Road, Aztec, NM 87410
Phone: (505) 334-6178 Fax: (505) 334-6170
District IV
1220 S. St. Francis Dr., Santa Fe, NM 87505
Phone: (505) 476-3460 Fax: (505) 476-3462

State of New Mexico
Energy, Minerals & Natural Resources Department
OIL CONSERVATION DIVISION
1220 South St. Francis Dr.
Santa Fe, NM 87505

HOBBS OCD

SEP 29 2015

RECEIVED

Form C-102
Revised August 1, 2011
Submit one copy to appropriate
District Office
☐ AMENDED REPORT

WELL LOCATION AND ACREAGE DEDICATION PLAT

¹ API Number 30-025-42814	² Pool Code 97922	³ Pool Name WC-025 G-06 S223421L; BONE SPRING
⁴ Property Code 30863	⁵ Property Name GAUCHO UNIT	⁶ Well Number 23H
⁷ OGRID No. 6137	⁸ Operator Name DEVON ENERGY PRODUCTION COMPANY, L.P.	⁹ Elevation 3470.1

¹⁰ Surface Location

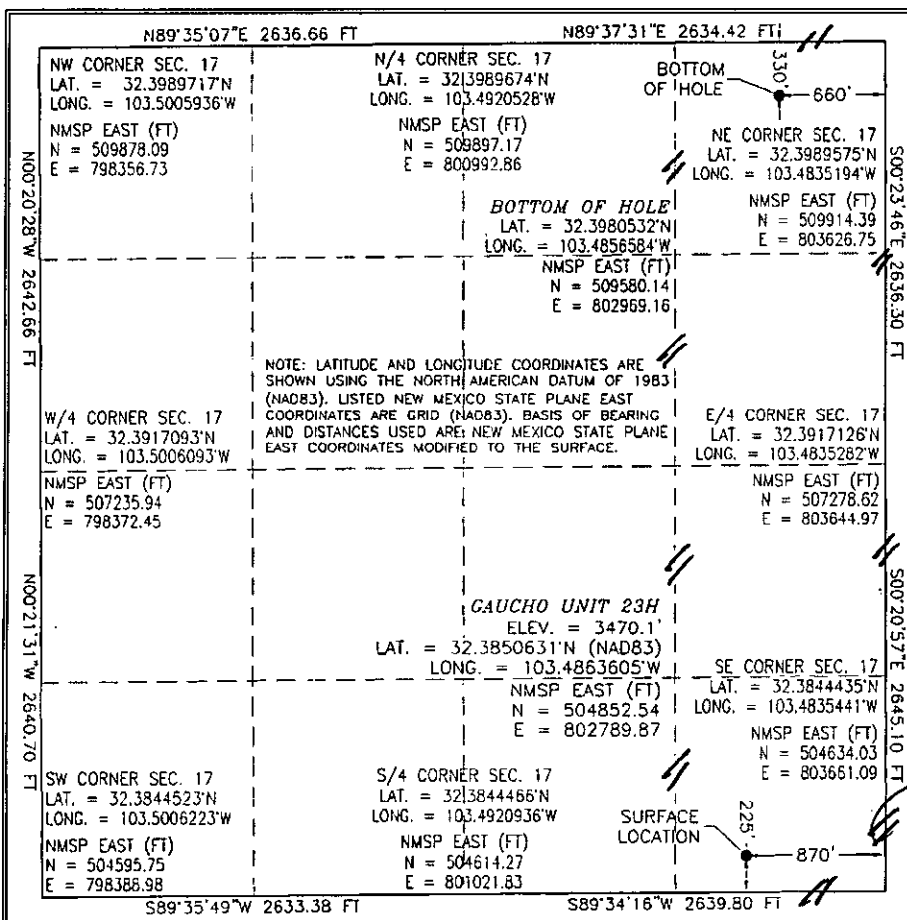
UL or lot no.	Section	Township	Range	Lot Idn	Feet from the	North/South line	Feet from the	East/West line	County
P	17	22 S	34 E		225	SOUTH	870	EAST	LEA

¹¹ Bottom Hole Location If Different From Surface

UL or lot no.	Section	Township	Range	Lot Idn	Feet from the	North/South line	Feet from the	East/West line	County
A	17	22 S	34 E		330	NORTH	660	EAST	LEA

¹² Dedicated Acres	¹³ Joint or Infill	¹⁴ Consolidation Code	¹⁵ Order No.
160			

No allowable will be assigned to this completion until all interests have been consolidated or a non-standard unit has been approved by the division.



¹⁶ OPERATOR CERTIFICATION

I hereby certify that the information contained herein is true and complete to the best of my knowledge and belief, and that this organization either owns a working interest or unleased mineral interest in the land including the proposed bottom hole location or has a right to drill this well at this location pursuant to a contract with an owner of such a mineral or working interest, or to a voluntary pooling agreement or a community pooling order heretofore entered by the division.

Signature: *David H. Cook* Date: 2/19/2015

Printed Name: David H. Cook

E-mail Address: david.cook@dmv.com

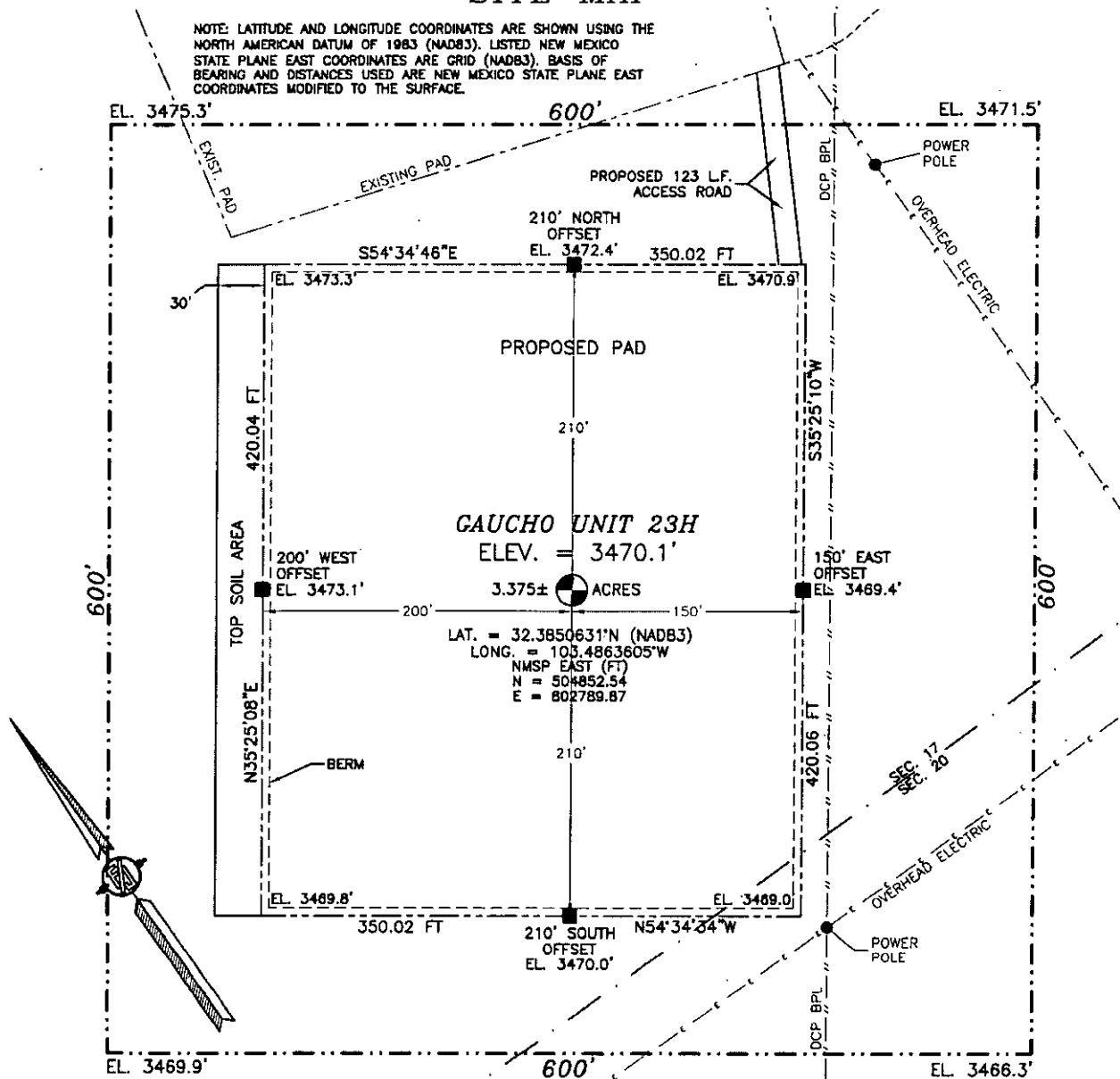
¹⁷ SURVEYOR CERTIFICATION

I hereby certify that the well location shown on this plat was plotted from field notes of accurate surveys made by me or under my supervision, and that the same is true and correct to the best of my belief.

Signature and Seal of Professional Surveyor: *James E. Jaramillo*
Date of Survey: JANUARY 14, 2015
Certificate Number: FILMUN E. JARAMILLO, PLS 12797
SURVEY NO. 3586

SECTION 17, TOWNSHIP 22 SOUTH, RANGE 34 EAST, N.M.P.M.
LEA COUNTY, STATE OF NEW MEXICO
SITE MAP

NOTE: LATITUDE AND LONGITUDE COORDINATES ARE SHOWN USING THE NORTH AMERICAN DATUM OF 1983 (NAD83). LISTED NEW MEXICO STATE PLANE EAST COORDINATES ARE GRID (NAD83). BASIS OF BEARING AND DISTANCES USED ARE NEW MEXICO STATE PLANE EAST COORDINATES MODIFIED TO THE SURFACE.



010 50 100 200

SCALE 1" = 100'

DIRECTIONS TO LOCATION

FROM THE INTERSECTION OF STATE HWY 128 & DELAWARE BASIN ROAD GO NORTH THEN EAST ON DELAWARE BASIN ROAD APPROX. 9.2 MILES TO A LEASE ROAD ON LEFT (NORTH) TURN NORTH FOLLOW LEASE ROAD NORTHWEST PASS FRAC POND APPROX. 4.5 MILES TO A 4 WAY INTERSECTION TURN RIGHT (NORTHEAST) GO APPROX. 0.7 MILES TO A LEASE ROAD ON RIGHT (SOUTH) TURN SOUTH GO APPROX. 0.4 MILES TURN RIGHT (WEST) GO 0.1 MILES TO EXISTING PAD LOCATION IS 250' SOUTH OF PAD

DEVON ENERGY PRODUCTION COMPANY, L.P.

GAUCHO UNIT 23H

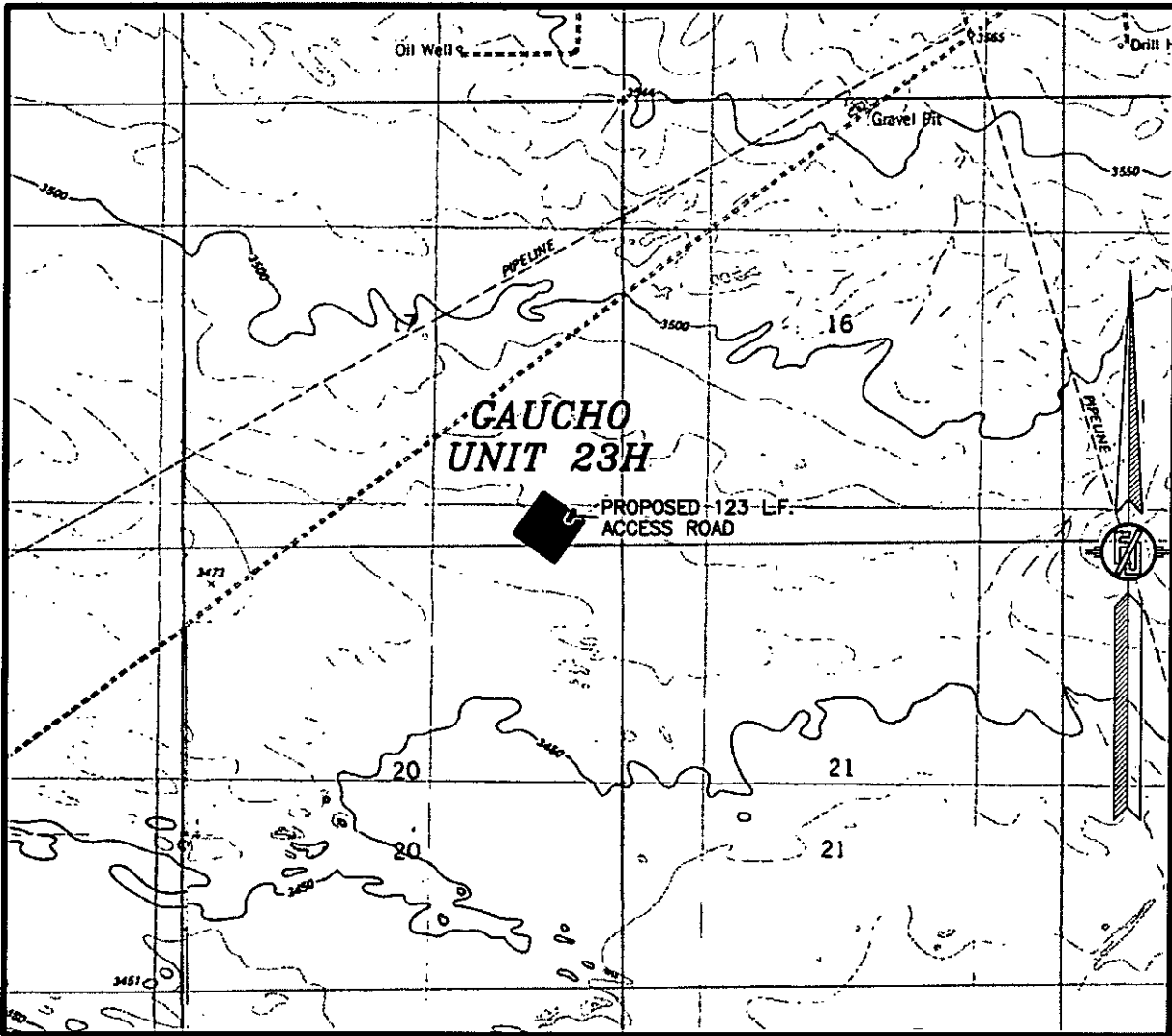
LOCATED 225 FT. FROM THE SOUTH LINE
AND 870 FT. FROM THE EAST LINE OF
SECTION 17, TOWNSHIP 22 SOUTH,
RANGE 34 EAST, N.M.P.M.
LEA COUNTY, STATE OF NEW MEXICO

JANUARY 14, 2015

SURVEY NO. 3586

MADRON SURVEYING, INC. 301 SOUTH CANAL (575) 234-3341 CARLSBAD, NEW MEXICO

SECTION 17, TOWNSHIP 22 SOUTH, RANGE 34 EAST, N.M.P.M.
LEA COUNTY, STATE OF NEW MEXICO
LOCATION VERIFICATION MAP



USGS QUAD MAP:
SAN SIMON RANCH

NOT TO SCALE

DEVON ENERGY PRODUCTION COMPANY, L.P.
GAUCHO UNIT 23H

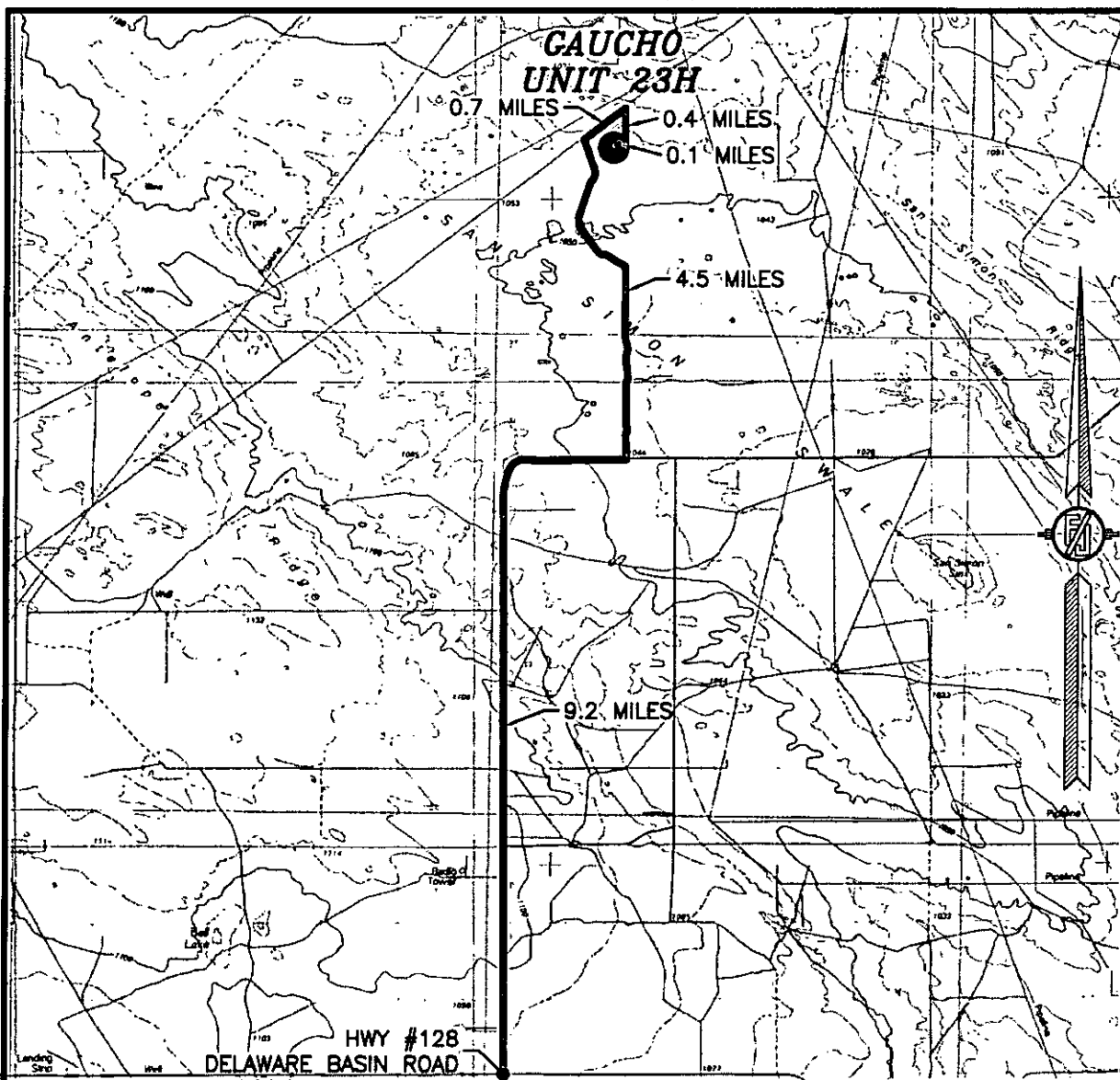
LOCATED 225 FT. FROM THE SOUTH LINE
AND 870 FT. FROM THE EAST LINE OF
SECTION 17, TOWNSHIP 22 SOUTH,
RANGE 34 EAST, N.M.P.M.
LEA COUNTY, STATE OF NEW MEXICO

JANUARY 14, 2015

SURVEY NO. 3586

MADRON SURVEYING, INC. 301 SOUTH CANAL (575) 234-3341 CARLSBAD, NEW MEXICO

SECTION 17, TOWNSHIP 22 SOUTH, RANGE 34 EAST, N.M.P.M.
LEA COUNTY, STATE OF NEW MEXICO
VICINITY MAP



DISTANCES IN MILES

NOT TO SCALE

DIRECTIONS TO LOCATION

FROM THE INTERSECTION OF STATE HWY 128 & DELAWARE BASIN ROAD GO NORTH THEN EAST ON DELAWARE BASIN ROAD APPROX. 9.2 MILES TO A LEASE ROAD ON LEFT (NORTH) TURN NORTH FOLLOW LEASE ROAD NORTHWEST PASS FRAC POND APPROX. 4.5 MILES TO A 4 WAY INTERSECTION TURN RIGHT (NORTHEAST) GO APPROX. 0.7 MILES TO A LEASE ROAD ON RIGHT (SOUTH) TURN SOUTH GO APPROX. 0.4 MILES TURN RIGHT (WEST) GO 0.1 MILES TO EXISTING PAD LOCATION IS 250' SOUTH OF PAD

**DEVON ENERGY PRODUCTION COMPANY, L.P.
CAUCHITO UNIT 23H**

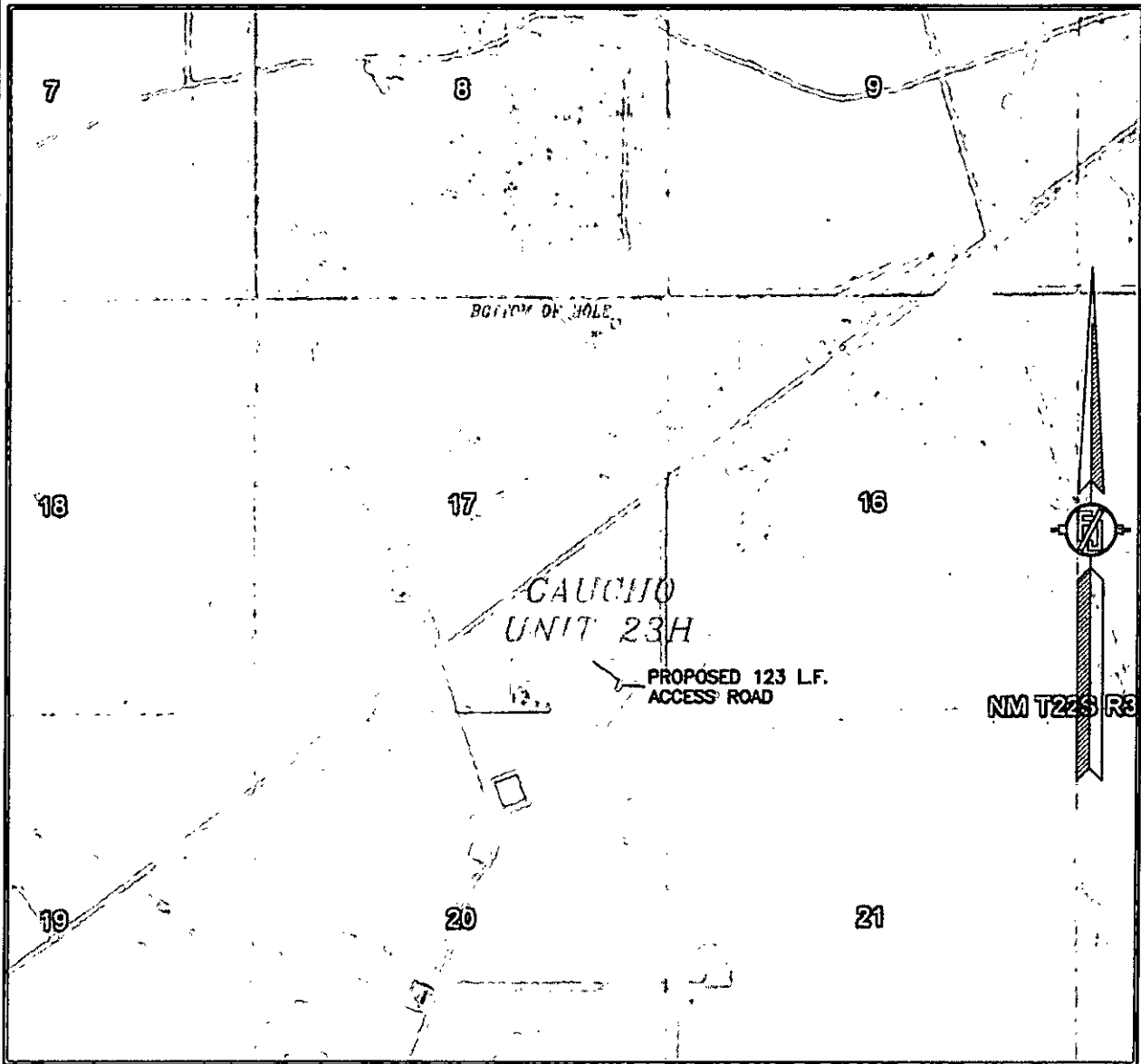
LOCATED 225 FT. FROM THE SOUTH LINE
AND 870 FT. FROM THE EAST LINE OF
SECTION 17, TOWNSHIP 22 SOUTH,
RANGE 34 EAST, N.M.P.M.
LEA COUNTY, STATE OF NEW MEXICO

JANUARY 14, 2015

SURVEY NO. 3586

MADRON SURVEYING, INC. 301 SOUTH CANAL (575) 234-3341 CARLSBAD, NEW MEXICO

SECTION 17, TOWNSHIP 22 SOUTH, RANGE 34 EAST, N.M.P.M.
LEA COUNTY, STATE OF NEW MEXICO
AERIAL PHOTO



NOT TO SCALE
AERIAL PHOTO:
GOOGLE EARTH
FEB. 2014

DEVON ENERGY PRODUCTION COMPANY, L.P.
CAUCHO UNIT 23H

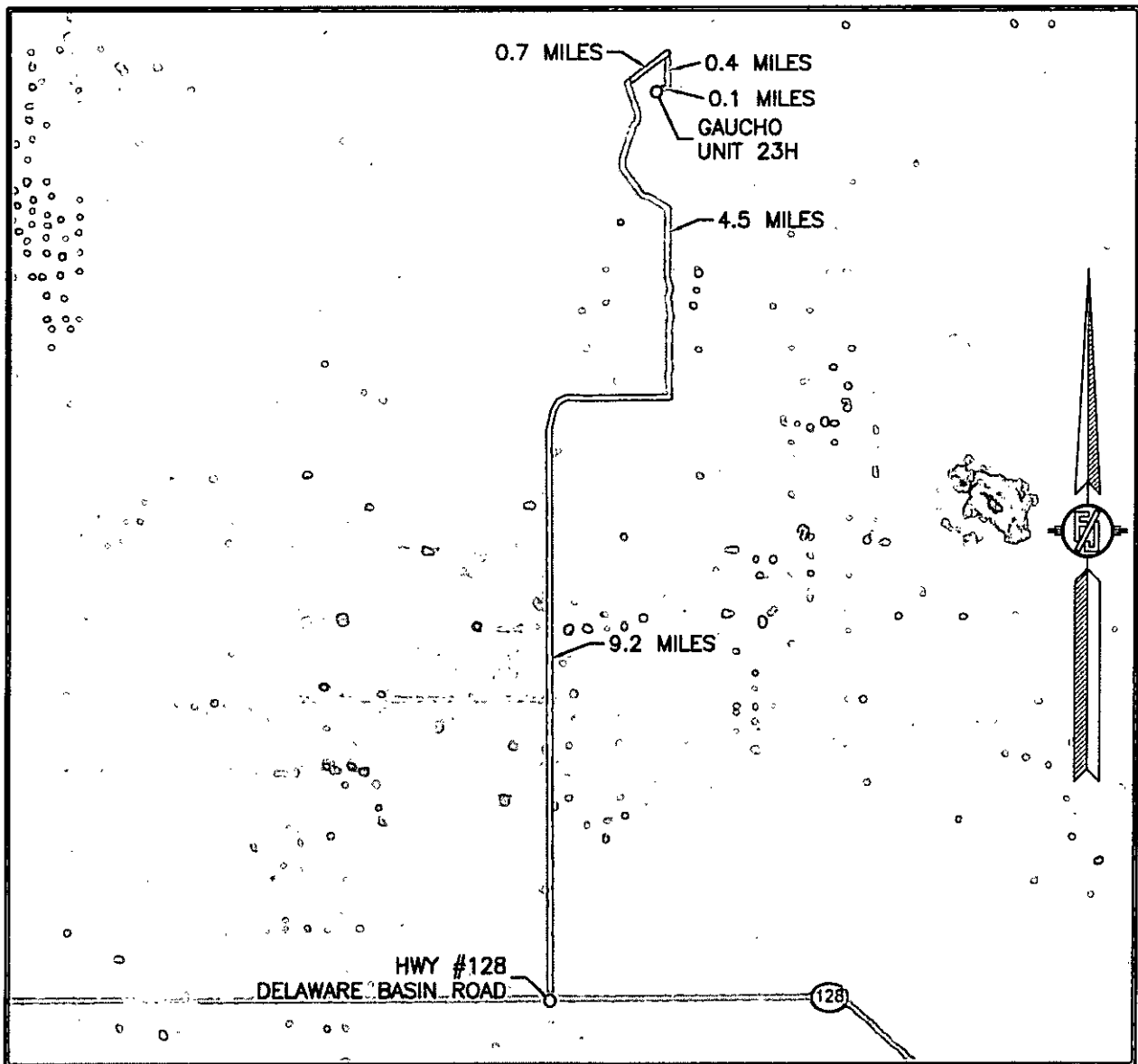
LOCATED 225 FT. FROM THE SOUTH LINE
AND 870 FT. FROM THE EAST LINE OF
SECTION 17, TOWNSHIP 22 SOUTH,
RANGE 34 EAST, N.M.P.M.
LEA COUNTY, STATE OF NEW MEXICO

JANUARY 14, 2015

SURVEY NO. 3586

MADRON SURVEYING, INC. 301 SOUTH CANAL (575) 234-3341 CARLSBAD, NEW MEXICO

SECTION 17, TOWNSHIP 22 SOUTH, RANGE 34 EAST, N.M.P.M.
LEA COUNTY, STATE OF NEW MEXICO
AERIAL ACCESS ROUTE MAP



NOT TO SCALE
AERIAL PHOTO:
GOOGLE EARTH
FEB. 2014

DEVON ENERGY PRODUCTION COMPANY, L.P.
GAUCHO UNIT 23H

LOCATED 225 FT. FROM THE SOUTH LINE
AND 870 FT. FROM THE EAST LINE OF
SECTION 17, TOWNSHIP 22 SOUTH,
RANGE 34 EAST, N.M.P.M.
LEA COUNTY, STATE OF NEW MEXICO

JANUARY 14, 2015

SURVEY NO. 3586

MADRON SURVEYING, INC. 301 SOUTH CANAL (575) 234-3341 CARLSBAD, NEW MEXICO

One Mile Radius Map

Estimated distance to nearest wellbores:	
*From SHL: Gaucho Unit 6H	160 ft E
Gaucho Unit 12H	550 ft SE
Gaucho Unit 10H	950 ft W
Gaucho Unit 11H	1055 ft W
*From BHL: Oxy GR 8 State 1	925 ft N

Estimated distance to nearest wellbores:	
*From SHL: Gaucho Unit 6H	160 ft E
Gaucho Unit 12H	550 ft SE
Gaucho Unit 10H	950 ft W
Gaucho Unit 11H	1055 ft W
*From BHL: Oxy GR 8 State 1	925 ft N

devon

Gaucho Unit 23H

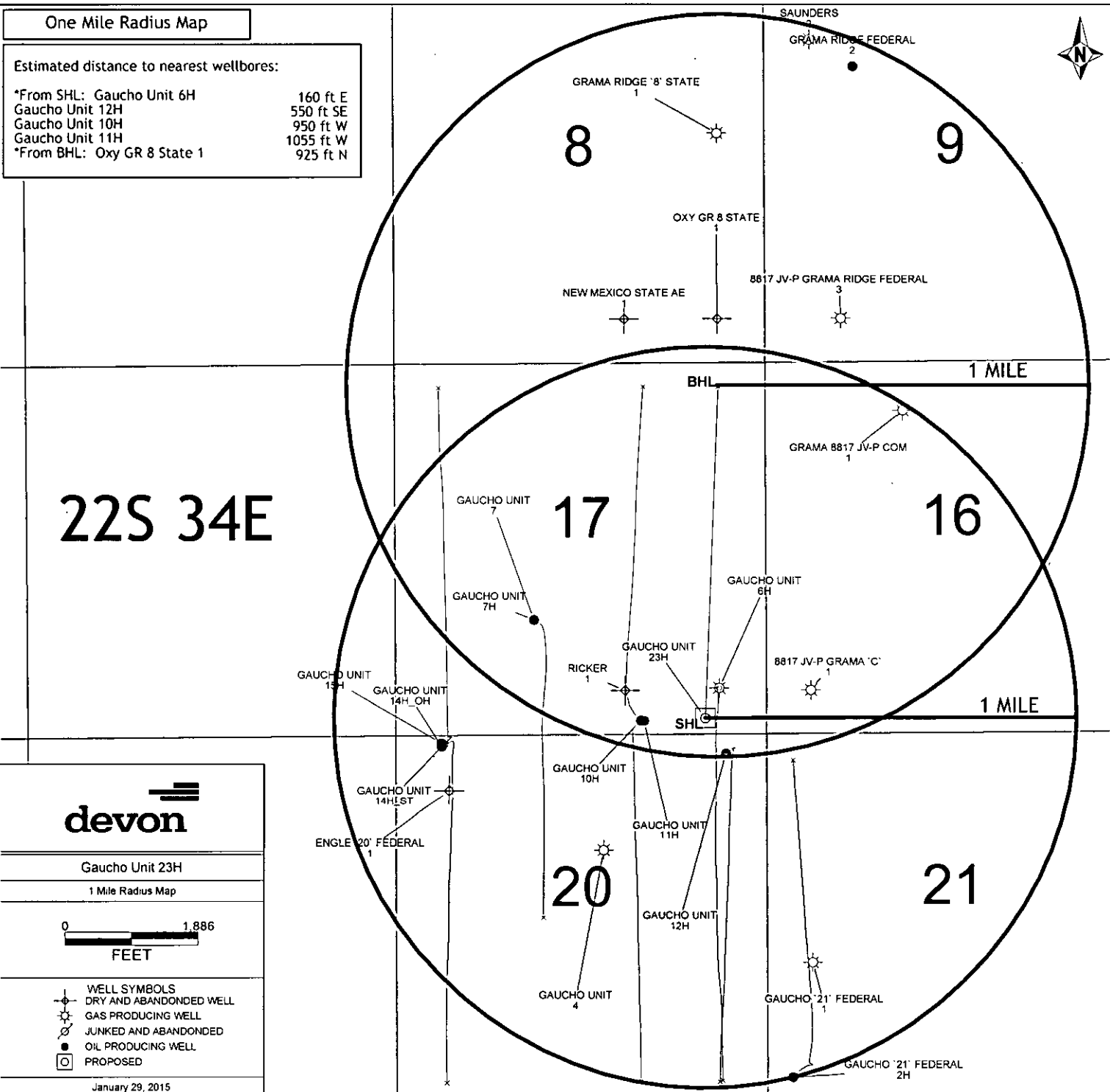
1 Mile Radius Map



WELL SYMBOLS

	DRY AND ABANDONED WELL
	GAS PRODUCING WELL
	JUNKED AND ABANDONED
	OIL PRODUCING WELL
	PROPOSED

January 29, 2015





SECTION 17, TOWNSHIP 22 SOUTH, RANGE 34 EAST
LEA COUNTY, STATE OF NEW MEXICO

SHL: 225'FSL - 870'FEL
BHL: 330'FNL - 660'FEL

