

District I
1625 N. French Dr., Hobbs, NM 88240
Phone: (575) 393-6161 Fax: (575) 393-0720
District II
811 S. First St., Artesia, NM 88210
Phone: (575) 748-1283 Fax: (575) 748-9720
District III
1000 Rio Brazos Road, Aztec, NM 87410
Phone: (505) 334-6178 Fax: (505) 334-6170
District IV
1220 S. St. Francis Dr., Sante Fe, NM 87505
Phone: (505) 476-3460 Fax: (505) 476-3462

State of New Mexico
Energy, Minerals & Natural Resources
Department
OIL CONSERVATION DIVISION
1220 South St. Francis Dr.
Sante Fe, NM 87505

FORM C-102

Revised August 1, 2011

Submit one copy to appropriate

District Office

☐ AMENDED REPORT

OCT 01 2015

WELL LOCATION AND ACREAGE DEDICATION PLAT

¹ API Number 30-025- 42827	² Pool Code 98097	³ Pool Name WC-025 G-09 S263327G; Upper Wolfcamp
⁴ Property Code 316293	⁵ Property Name RATTLESNAKE 21 FED COM	⁶ Well Number #701H
⁷ GRID No. 7377	⁸ Operator Name EOG RESOURCES, INC.	⁹ Elevation 3253'

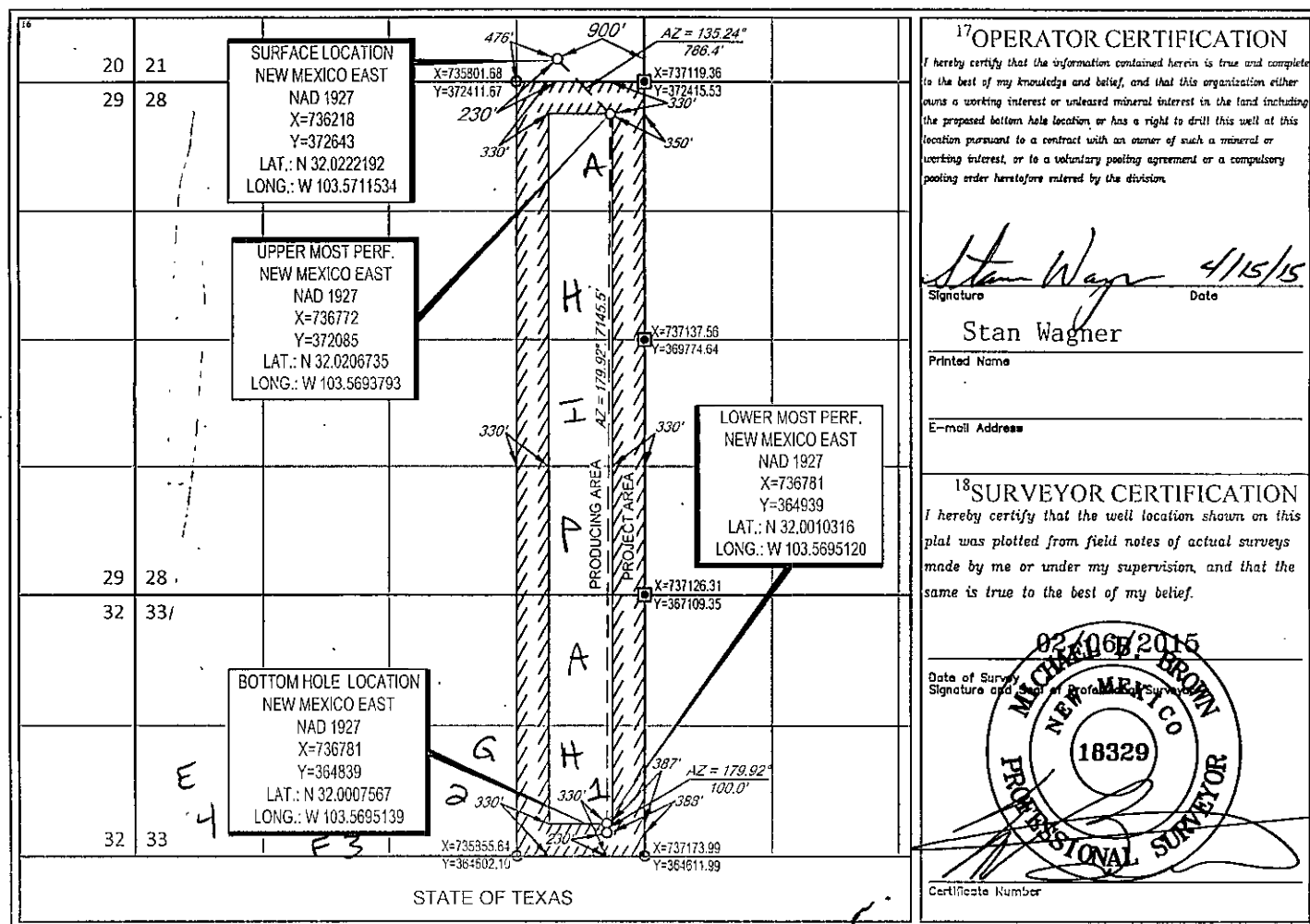
¹⁰Surface Location

UL or lot no.	Section	Township	Range	Lot Idn	Feet from the	North/South line	Feet from the	East/West line	County
P	21	26-S	33-E	-	230'	SOUTH	900'	EAST	LEA

UL or lot no.	Section	Township	Range	Lot Idn	Feet from the	North/South line	Feet from the	East/West line	County
H 1	33	26-S	33-E	- 1	230'	SOUTH	388'	EAST	LEA

¹² Dedicated Acres 236.21	¹³ Joint or Infill	¹⁴ Consolidation Code	¹⁵ Order No.
--	-------------------------------	----------------------------------	-------------------------

No allowable will be assigned to this completion until all interests have been consolidated or a non-standard unit has been approved by the division.



PROPOSED WELL PAD

#702H 140' 170' 200' 200'

#701H

SECTION LINE

PROPOSED ROAD - 896'

DETAIL VIEW NOT TO SCALE

25S-32E

25S-33E

25S-34E

26S-32E

26S-33E

26S-34E

RATTLESNAKE 21 FED COM #701H

Co Rd 2

Dinyabla Rd

Battle Ave Rd

Co Rd 2

Battle Ave Rd

Co Rd 2

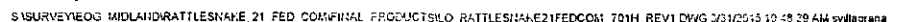
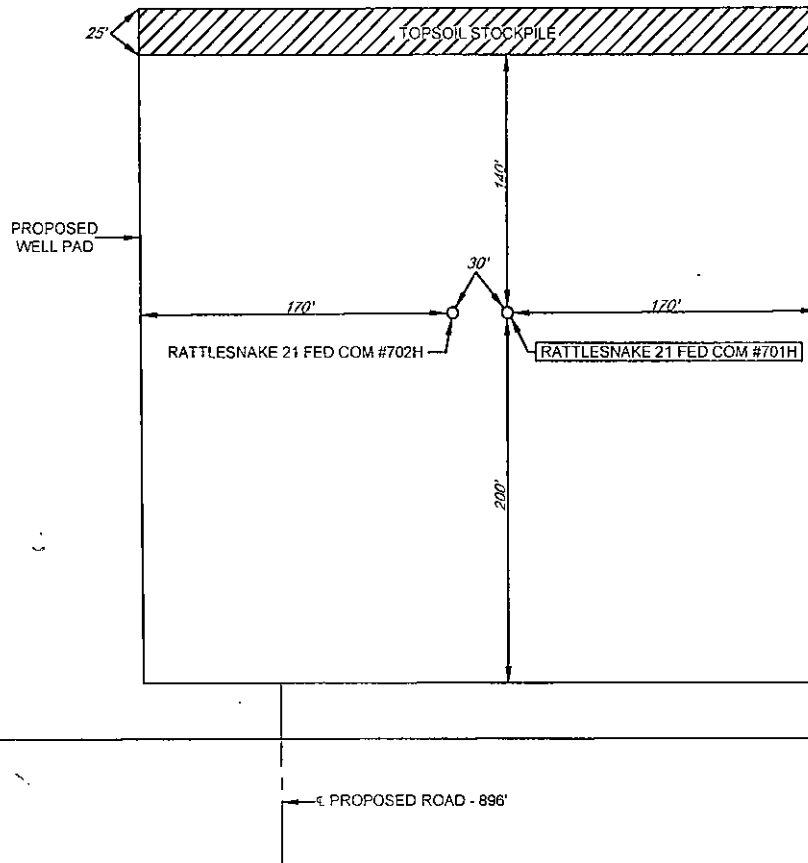


EXHIBIT 2B

SECTION 21, TOWNSHIP 26-S, RANGE 33-E, N.M.P.M.
LEA COUNTY, NEW MEXICO

2.89 ACRE SITE
DETAIL VIEW
SCALE: 1" = 100'



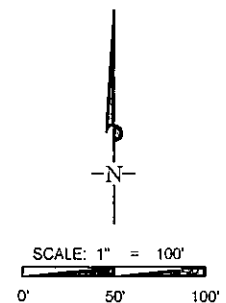
LEASE NAME & WELL NO.: RATTLESNAKE 21 FED COM #701H
#701H LATITUDE N 32.0222192 #701H LONGITUDE W 103.5711534

LEGEND

- SURVEY/SECTION LINE
 PROPOSED ROAD

ALL BEARINGS, DISTANCES, AND COORDINATE VALUES CONTAINED HEREON ARE GRID
BASED UPON THE NEW MEXICO STATE PLANE COORDINATE SYSTEM, EAST ZONE OF THE
NORTH AMERICAN DATUM 1927, U.S. SURVEY FEET

THIS PROPOSED PAD SITE LOCATION SHOWN HEREON HAS BEEN SURVEYED ON THE GROUND UNDER MY SUPERVISION AND PREPARED ACCORDING TO THE EVIDENCE FOUND AT THE TIME OF SURVEY, AND DATA PROVIDED BY EOG RESOURCES, INC. THIS CERTIFICATION IS MADE AND LIMITED TO THOSE PERSONS OR ENTITIES SHOWN ON THE FACE OF THIS PLAT AND IS NON-TRANSFERABLE. THIS SURVEY IS CERTIFIED FOR THIS TRANSACTION ONLY.



TOPOGRAPHIC
'LOYALTY' 'INNOVATION' 'LEGACY'

1400 EVERMAN PARKWAY, Ste. 197 • FT. WORTH, TEXAS 76140
TELEPHONE: (817) 744-7512 • FAX (817) 744-7548
2903 NORTH BIG SPRING • MIDLAND, TEXAS 79705
TELEPHONE: (432) 682-1653 OR (800) 767-1653 • FAX (432) 682-1743
WWW.TOPOGRAPHIC.COM

ORIGINAL DOCUMENT SIZE: 8.5" X 11"

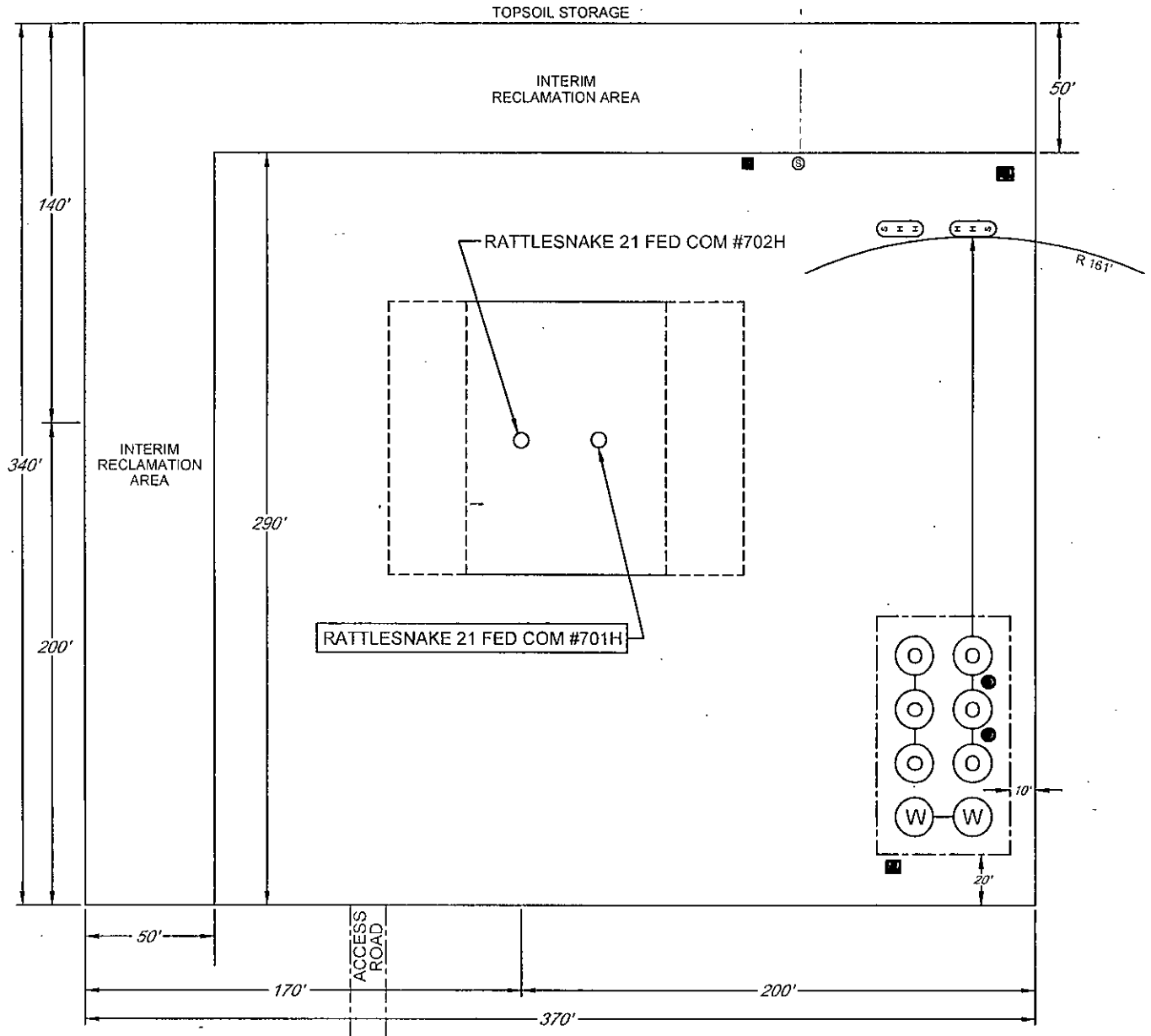
SAURUTEYEOG AND LAR RATTLESNAKE 21 FED COM FINAL PRODUCTS LO RATTLESNAKE21FEDCOM 701H REV.DWG 3/31/2015 10:51:25 AM e:\bldg\3129

EXHIBIT 2C

RECLAMATION AND FACILITY DIAGRAM - PRODUCTION FACILITIES DIAGRAM

SECTION 21, TOWNSHIP 26-S, RANGE 33-E, N.M.P.M.
LEA COUNTY, NEW MEXICO

DETAIL VIEW
SCALE: 1" = 60'



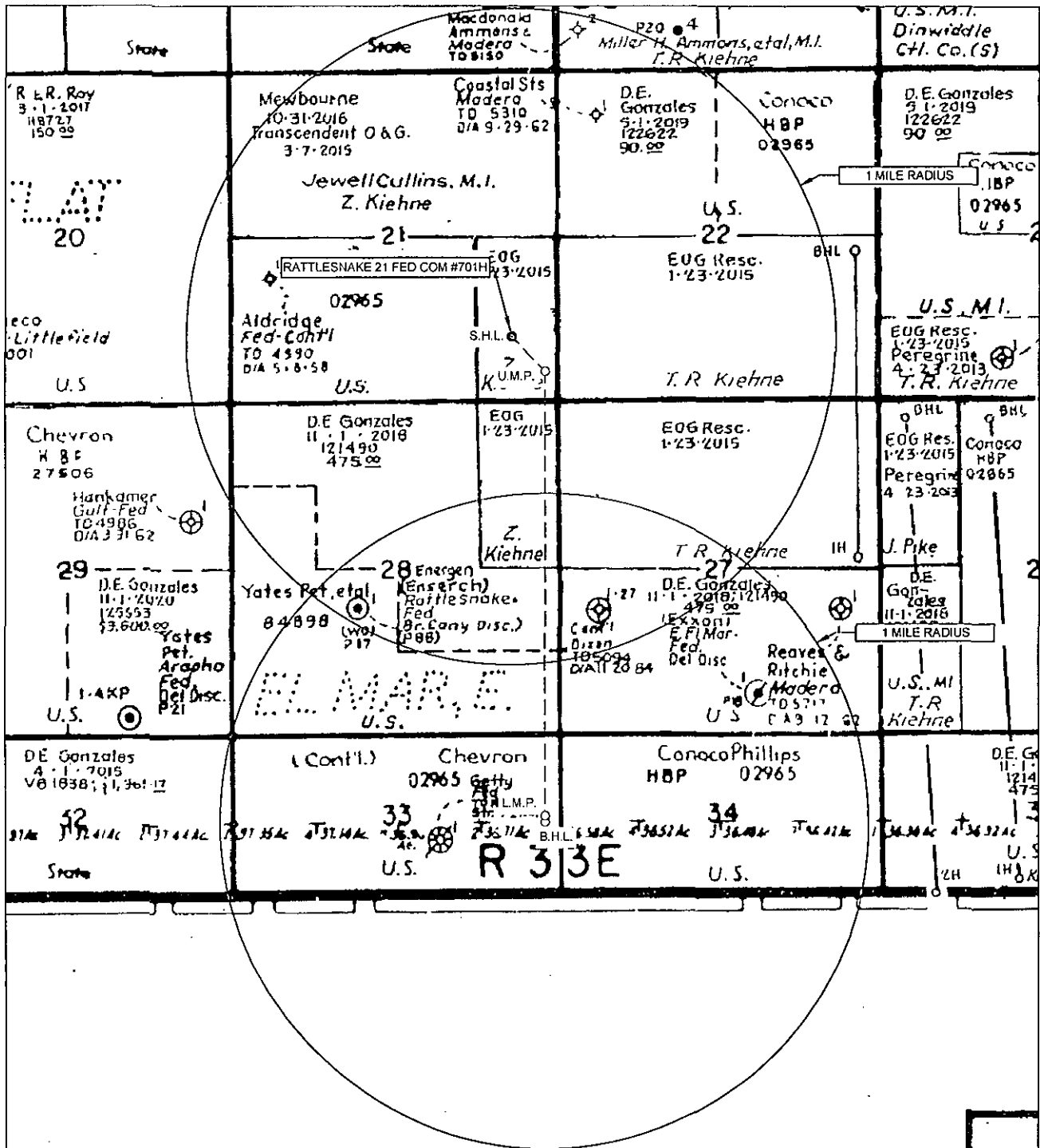
LEASE NAME & WELL NO.: RATTLESNAKE 21 FED COM #701H
#701H LATITUDE N 32.0222192 #701H LONGITUDE W 103.5711534

LEGEND

	500 BBL OIL TANK		FLARE SEPARATOR
	500 BBL WATER TANK		VRU
	36 x 15 HEATER/SEPARATOR		48 X 25 VRT
			FP FLARE
			OP FLARE

EXHIBIT 3

SECTION 21, TOWNSHIP 26-S, RANGE 33-E, N.M.P.M.
LEA COUNTY, NEW MEXICO



LEASE NAME & WELL NO.: RATTLESNAKE 21 FED COM #701H

SCALE: NTS

#701H LATITUDE

N 32.0222192

#701H LONGITUDE

W 103.5711534

ALL BEARINGS, DISTANCES, AND COORDINATE VALUES CONTAINED HEREON ARE GRID BASED UPON THE NEW MEXICO STATE PLANE COORDINATE SYSTEM, EAST ZONE OF THE NORTH AMERICAN DATUM 1927, U.S. SURVEY FEET.

THIS EASEMENT/SERVITUDE LOCATION SHOWN HEREON HAS BEEN SURVEYED ON THE GROUND UNDER MY SUPERVISION AND PREPARED ACCORDING TO THE EVIDENCE FOUND AT THE TIME OF SURVEY, AND DATA PROVIDED BY EOG RESOURCES, INC. THIS CERTIFICATION IS MADE AND LIMITED TO THOSE PERSONS OR ENTITIES SHOWN ON THE FACE OF THIS PLAT AND IS NON-TRANSFERABLE. THIS SURVEY IS CERTIFIED FOR THIS TRANSACTION ONLY.



TOPOGRAPHIC
LOYALTY INNOVATION LEGACY

1400 EVERMAN PARKWAY, Ste. 197 • FT. WORTH, TEXAS 76140
TELEPHONE: (817) 744-7512 • FAX (817) 744-7543
2903 NORTH BIG SPRING • MIDLAND, TEXAS 79705
TELEPHONE: (432) 682-1853 OR (800) 767-1653 • FAX (432) 682-1743
WWW.TOPOGRAPHIC.COM

LOCATION & ELEVATION VERIFICATION MAP



LEASE NAME & WELL NO.: RATTLESNAKE 21 FED COM #701H

SECTION 21 TWP 26-S RGE 33-E SURVEY N.M.P.M.
 COUNTY LEA STATE NM ELEVATION 3253'
 DESCRIPTION 230' FSL & 900' FEL

LATITUDE N 32.0222192 LONGITUDE W 103.5711534



SCALE: 1" = 2000'
 0' 1000' 2000'

THIS EASEMENT/SERVITUDE LOCATION SHOWN HEREON HAS BEEN SURVEYED ON THE GROUND UNDER MY SUPERVISION AND PREPARED ACCORDING TO THE EVIDENCE FOUND AT THE TIME OF SURVEY, AND DATA PROVIDED BY EOG RESOURCES, INC. THIS CERTIFICATION IS MADE AND LIMITED TO THOSE PERSONS OR ENTITIES SHOWN ON THE FACE OF THIS PLAT AND IS NON-TRANSFERABLE. THIS SURVEY IS CERTIFIED FOR THIS TRANSACTION ONLY.

ALL BEARINGS, DISTANCES, AND COORDINATE VALUES CONTAINED HEREON ARE GRID BASED UPON THE NEW MEXICO STATE PLANE COORDINATE SYSTEM, EAST ZONE OF THE NORTH AMERICAN DATUM 1927, U.S. SURVEY FEET.



TOPOGRAPHIC
 'LOYALTY INNOVATION LEGACY'

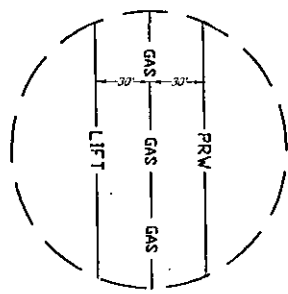
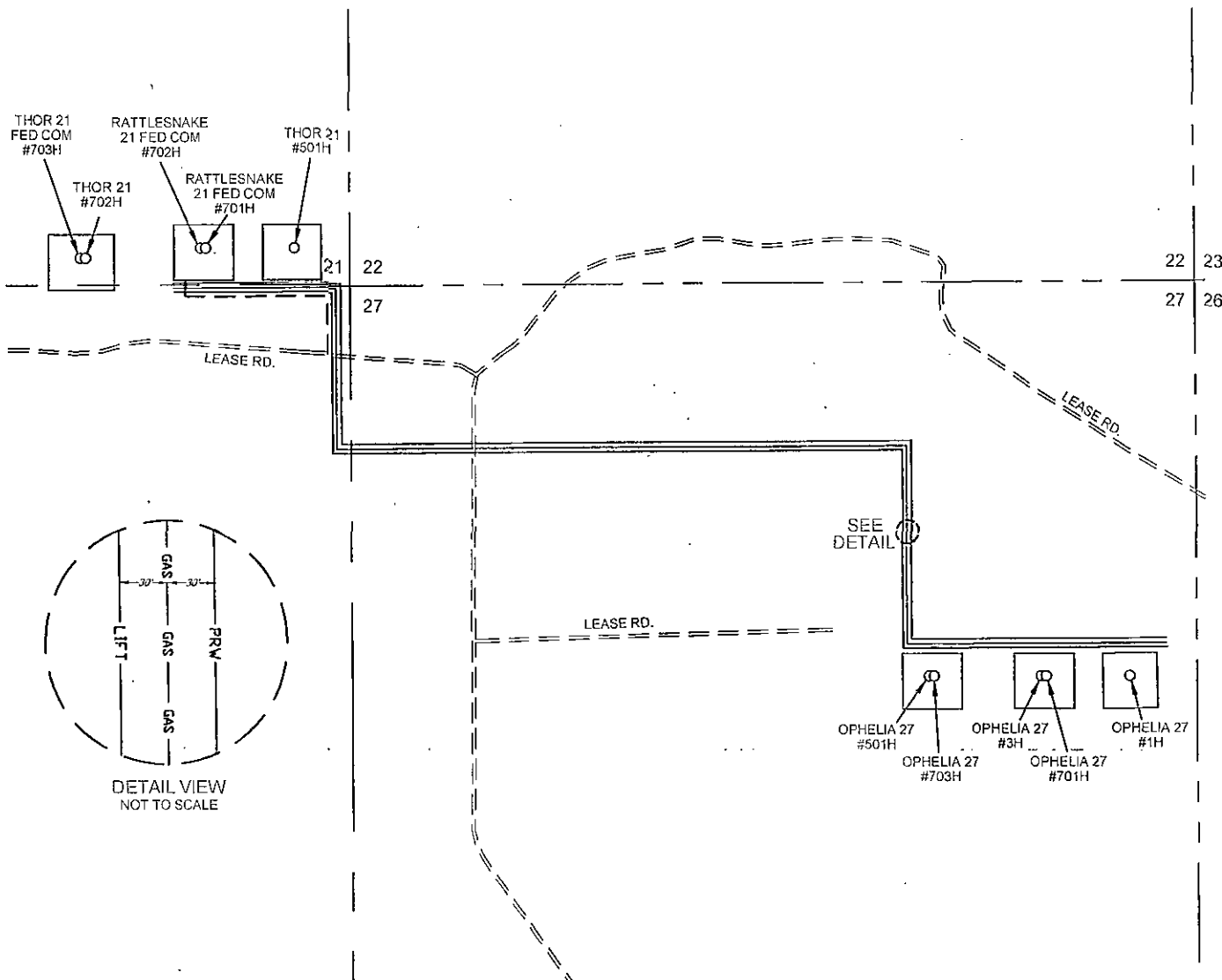
1400 EVERMAN PARKWAY, Ste. 197 • FT. WORTH, TEXAS 76140
 TELEPHONE: (817) 744-7512 • FAX: (817) 744-7548
 2903 NORTH BIG SPRING • MIDLAND, TEXAS 79705
 TELEPHONE: (432) 682-1653 OR (800) 767-1653 • FAX: (432) 682-1743
 WWW.TOPOGRAPHIC.COM

SCALE 1" = 1000'
0' 500' 1000'

EXHIBIT 5

SECTION 21, 27, & 28, TOWNSHIP 26-S, RANGE 33-E, N.M.P.M.
LEA COUNTY, NEW MEXICO

RATTLESNAKE 21 FED COM 701H & 702H INFRASTRUCTURE MAP



DETAIL VIEW
NOT TO SCALE



----- LEASE RD. DISTANCE -TOTAL FOOTAGE 1,241 FT	----- LIFT ----- 8" GAS LIFT LINE -TOTAL FOOTAGE 8,872 FT -(WORKING PRESSURE 75-125 PSI)
FROM LEASE RD. TO RATTLESNAKE 21 FED COM #701H & #702H 1,241 FT	FROM TO RATTLESNAKE 21 FED COM #701H & #702H TO OPHELIA 27 #1H 8,410 FT
----- PRV ----- 12" PRODUCED WATER LINE -TOTAL FOOTAGE 9,154 FT -(WORKING PRESSURE 75-125 PSI)	----- GAS ----- 12" GAS SALES LINE -TOTAL FOOTAGE 9,154 FT -(WORKING PRESSURE 75-125 PSI)
FROM TO RATTLESNAKE 21 FED COM #701H & #702H TO OPHELIA 27 #1H 8,409 FT	FROM TO RATTLESNAKE 21 FED COM #701H & #702H TO OPHELIA 27 #1H 8,410 FT

RATTLESNAKE 21 FED COM 701H & 702H INFRASTRUCTURE MAP	REVISION:	
	INT	DATE
DATE: 04/01/15		
FILE: RATTLESNAKE 21 FED COM 701H & 702H INFRASTRUCTURE MAP.DWG		
DRAWN BY: E.A.H.		
SHEET: 1 OF 1		