

District I
1625 N. French Dr., Hobbs, NM 88240
Phone: (575) 393-6161 Fax: (575) 393-0720
District II
811 S. First St., Artesia, NM 88210
Phone: (575) 748-1283 Fax: (575) 748-9720
District III
1000 Rio Hrazos Road, Aztec, NM 87410
Phone: (505) 334-6178 Fax: (505) 334-6170
District IV
1220 S. St. Francis Dr., Santa Fe, NM 87505
Phone: (505) 476-3460 Fax: (505) 476-3462

State of New Mexico
Energy, Minerals & Natural Resources Department
OIL CONSERVATION DIVISION
1220 South St. Francis Dr.
Santa Fe, NM 87505

HOBBS OGD

OCT 01 2015

RECEIVED

Form C-102
Revised August 1, 2011
Submit one copy to appropriate
District Office

☐ AMENDED REPORT

WELL LOCATION AND ACREAGE DEDICATION PLAT

1 API Number 30-025- 42820		2 Pool Code 44500		3 Pool Name Maljamar; Yeso West	
4 Property Code 39256		5 Property Name PAN HEAD FEE			6 Well Number 24H
7 GRID NO. 229137		8 Operator Name COG OPERATING, LLC			9 Elevation 4173'
10 Surface Location					
UL or lot no. N	Section 2	Township 17S	Range 32E	Lot Idn 85	Feet from the SOUTH
				Feet From the 2180	East/West line WEST
				County LEA	
11 Bottom Hole Location If Different From Surface					
UL or lot no. C	Section 14	Township 17S	Range 32E	Lot Idn 985	Feet from the NORTH
				Feet from the 2306	East/West line WEST
				County LEA	
12 Dedicated Acres 200		13 Joint or Infill		14 Consolidation Code	
				15 Order No.	

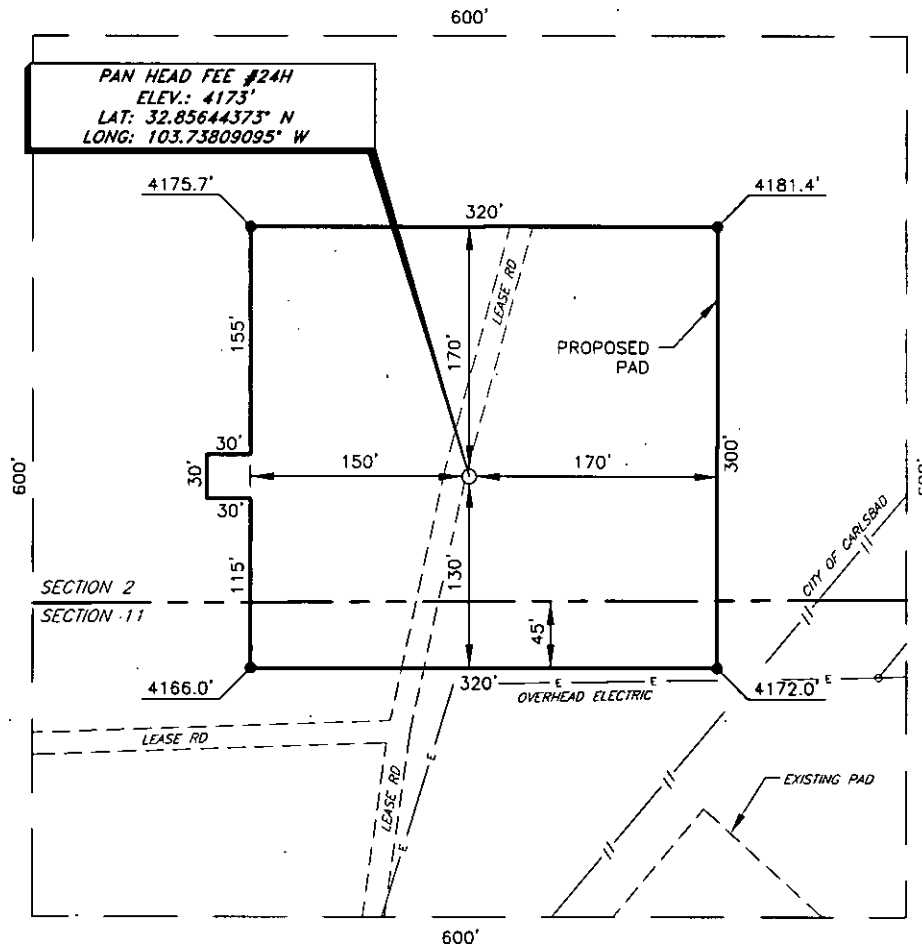
No allowable will be assigned to this completion until all interest have been consolidated or a non-standard unit has been approved by the division.

	<p>16</p> <p>LOT 1 LOT 3 LOT 2 LOT 1</p> <p>GEODETIC DATA NAD 27 GRID - NM EAST</p> <p>SURFACE LOCATION N 675800.7 - E 682787.7</p> <p>LAT: 32.85644373° N LONG: 103.73809095° W</p> <p>BOTTOM HOLE N 669447.4 - E 682950.5</p> <p>CORNER DATA NAD 27 GRID - NM EAST</p> <p>A: FOUND BRASS CAP "1913" N 665155.6 - E 680671.4</p> <p>B: FOUND BRASS CAP "1913" N 667794.8 - E 680655.1</p> <p>C: FOUND BRASS CAP "1913" N 670433.3 - E 680638.7</p> <p>D: FOUND BRASS CAP "1913" N 673071.1 - E 680625.4</p> <p>E: FOUND BRASS CAP "1913" N 675706.5 - E 680608.1</p> <p>F: FOUND BRASS CAP "1913" N 678344.7 - E 680593.0</p> <p>G: FOUND BRASS CAP "1913" N 680994.0 - E 680579.2</p> <p>H: FOUND BRASS CAP "1913" N 681003.4 - E 683219.1</p> <p>I: FOUND BRASS CAP "1913" N 681013.0 - E 685858.2</p> <p>J: FOUND BRASS CAP "1913" N 678368.0 - E 685871.0</p> <p>K: FOUND BRASS CAP "1913" N 675728.9 - E 685884.7</p> <p>L: FOUND BRASS CAP "1913" N 673091.0 - E 685901.5</p> <p>M: FOUND BRASS CAP "1913" N 670452.7 - E 685918.1</p> <p>N: FOUND BRASS CAP "1913" N 667813.8 - E 685935.1</p> <p>O: FOUND BRASS CAP "1913" N 665174.0 - E 685951.4</p> <p>P: FOUND BRASS CAP "1913" N 665164.7 - E 683311.6</p> <p>Q: FOUND BRASS CAP "1913" N 670431.7 - E 683273.2</p> <p>R: FOUND BRASS CAP "1913" N 675717.6 - E 683245.8</p> <p>1. CALCULATED CORNER N 675712.0 - E 681927.0</p> <p>2. CALCULATED CORNER N 670432.5 - E 681955.9</p> <p>3. CALCULATED CORNER N 669116.0 - E 681964.8</p> <p>4. CALCULATED CORNER N 669118.0 - E 683282.8</p>	<p>17 OPERATOR CERTIFICATION</p> <p>I hereby certify that the information contained herein is true and complete to the best of my knowledge and belief, and that this organization either owns a working interest or unleased mineral interest in the land including the proposed bottom hole location or has a right to drill this well at this location pursuant to a contract with an owner of such a mineral or working interest, or to a voluntary pooling agreement or a compulsory pooling order heretofore entered by the division.</p> <p>Signature: Date: 9-29-15</p> <p>Printed Name: Kelly J. Holly</p> <p>E-mail Address: kholly@concho.com</p>
	<p>18 SURVEYOR CERTIFICATION</p> <p>I hereby certify that the well location shown on this plat was plotted from field notes of actual surveys made by me or under my supervision, and that the same is true and correct to the best of my belief.</p> <p>Date of Survey: 7-6-2015</p> <p>Signature and Seal of Professional Surveyor: </p> <p>Certificate Number: 19680</p>	

RRC - Firm No.: TX 10193838 NM 4655451 - Job No.: LS1505220

OCT 07 2015

COG OPERATING, LLC
 PAN HEAD FEE #24H
 (85' FSL & 2180' FWL)
 SECTION 2, T17S, R32E
 N. M. P. M., LEA CO., NEW MEXICO



DIRECTIONS TO LOCATION

From the intersection of US Hwy. 82 and CR-249 (Tower Road);
 Go Northeast on US Hwy. 82 approx. 170 feet to a lease road on the right;
 Turn right and go Southeast approx. 0.9 miles to a lease road on the right;
 Turn right go Southwest approx. 0.2 miles;
 Location is on the left.

SCALE: 1" = 100'
 0 50 100
 BEARINGS ARE
 NAD 27 GRID - NM EAST
 DISTANCES ARE
 GROUND.

Firm No.: TX 10193838 NM 4655451

Copyright 2015 - All Rights Reserved

NO.	REVISION	DATE
JOB NO.:	LS1505220	
DWG. NO.:	1505220PAD	

RRC

308 W. BROADWAY ST., HOBBS, NM 88240 (575) 964-8200

SCALE: 1" = 100'
 DATE: 7-6-2015
 SURVEYED BY: BC/ER
 DRAWN BY: JC
 APPROVED BY: RMH
 SHEET : 1 OF 1

VICINITY MAP

NOT TO SCALE



*SECTION 2, TWP. 17 SOUTH, RGE. 32 EAST,
N. M. P. M., LEA CO., NEW MEXICO*

OPERATOR: COG Operating, LLC
LEASE: Pan Head Fee
WELL NO.: 24H

LOCATION: 85' FSL & 2180' FWL
ELEVATION: 4173'

Firm No.: TX 10193838 NM 4655451

Copyright 2015 - All Rights Reserved

NO.	REVISION	DATE
JOB NO.: LS1505220		
DWG. NO.: 1505220VM		

RRC

308 W. BROADWAY ST., HOBBS, NM 88240 (575) 964-8200

SCALE: N. T. S.
DATE: 7-6-2015
SURVEYED BY: BC/ER
DRAWN BY: JC
APPROVED BY: RMH
SHEET : 1 OF 1

[illegible]

LOCATION: 85' FSL & 2180' FWL
 CONTOUR INTERVAL: 10'
 USGS TOPO. SOURCE MAP:
Dog Lake, NM (P. E. 1985)

Firm No.: TX 10193838 NM 4655451

Copyright 2015 – All Rights Reserved

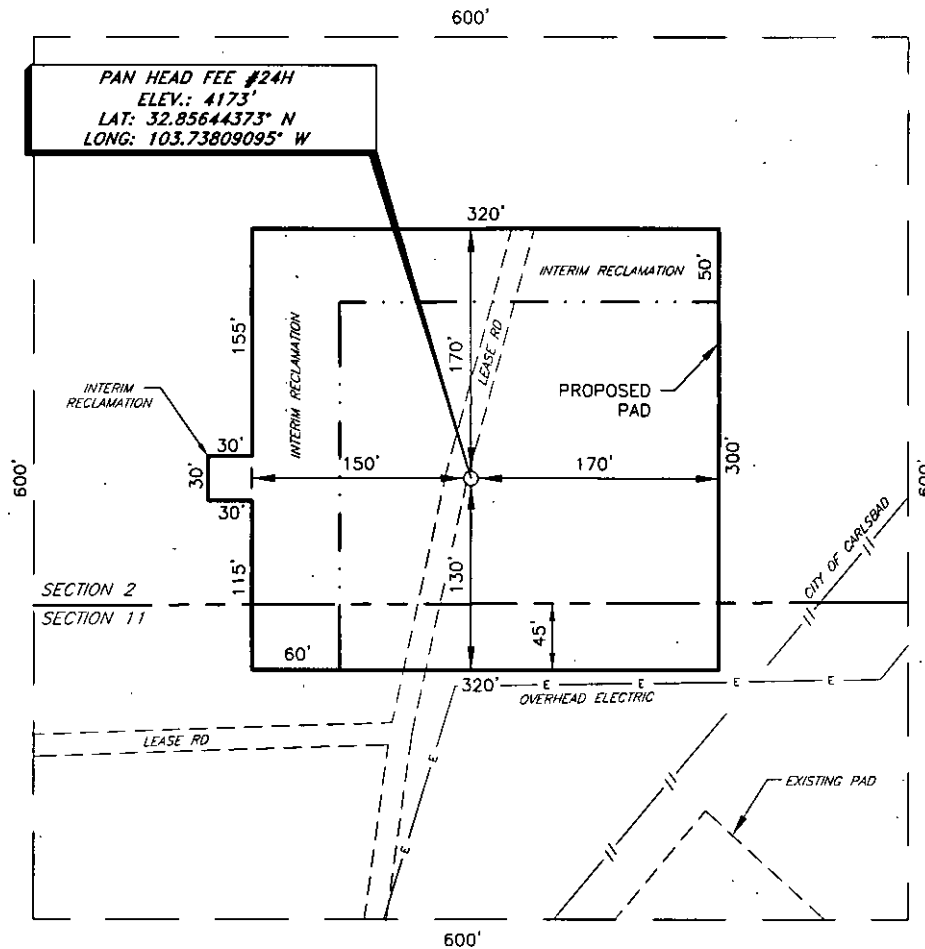
NO.	REVISION	DATE
JOB NO.: LS1505220		
DWG. NO.: 1505220LVM		

RRC

308 W. BROADWAY ST., HOBBS, NM 88240 (575) 964-8200

SCALE: 1" = 1000
DATE: 7/6/2015
SURVEYED BY: BC/ER
DRAWN BY: JC
APPROVED BY: RMH
SHEET : 1 OF 1

COG OPERATING, LLC
 INTERIM RECLAMATION
 PAN HEAD FEE #24H
 (85' FSL & 2180' FWL)
 SECTION 2, T17S, R32E
 N. M. P. M., LEA CO., NEW MEXICO



DIRECTIONS TO LOCATION

From the intersection of US Hwy. 82 and CR-249 (Tower Road);
 Go Northeast on US Hwy. 82 approx. 170 feet to a lease road on the right;
 Turn right and go Southeast approx. 0.9 miles to a lease road on the right;
 Turn right go Southwest approx. 0.2 miles;
 Location is on the left.

SCALE: 1" = 100'
 0 50 100
 BEARINGS ARE
 NAD 27 GRID - NM EAST
 DISTANCES ARE
 GROUND.

Firm No.: TX 10193838 NM 4655451

Copyright 2015 - All Rights Reserved

NO.	REVISION	DATE
JOB NO.:	LS1505220	
DWG. NO.:	1505220REC	

RRC

308 W. BROADWAY ST., HOBBS, NM 88240 (575) 964-8200

SCALE: 1" = 100'
DATE: 7-6-2015
SURVEYED BY: BC/ER
DRAWN BY: JC
APPROVED BY: RMH
SHEET : 1 OF 1